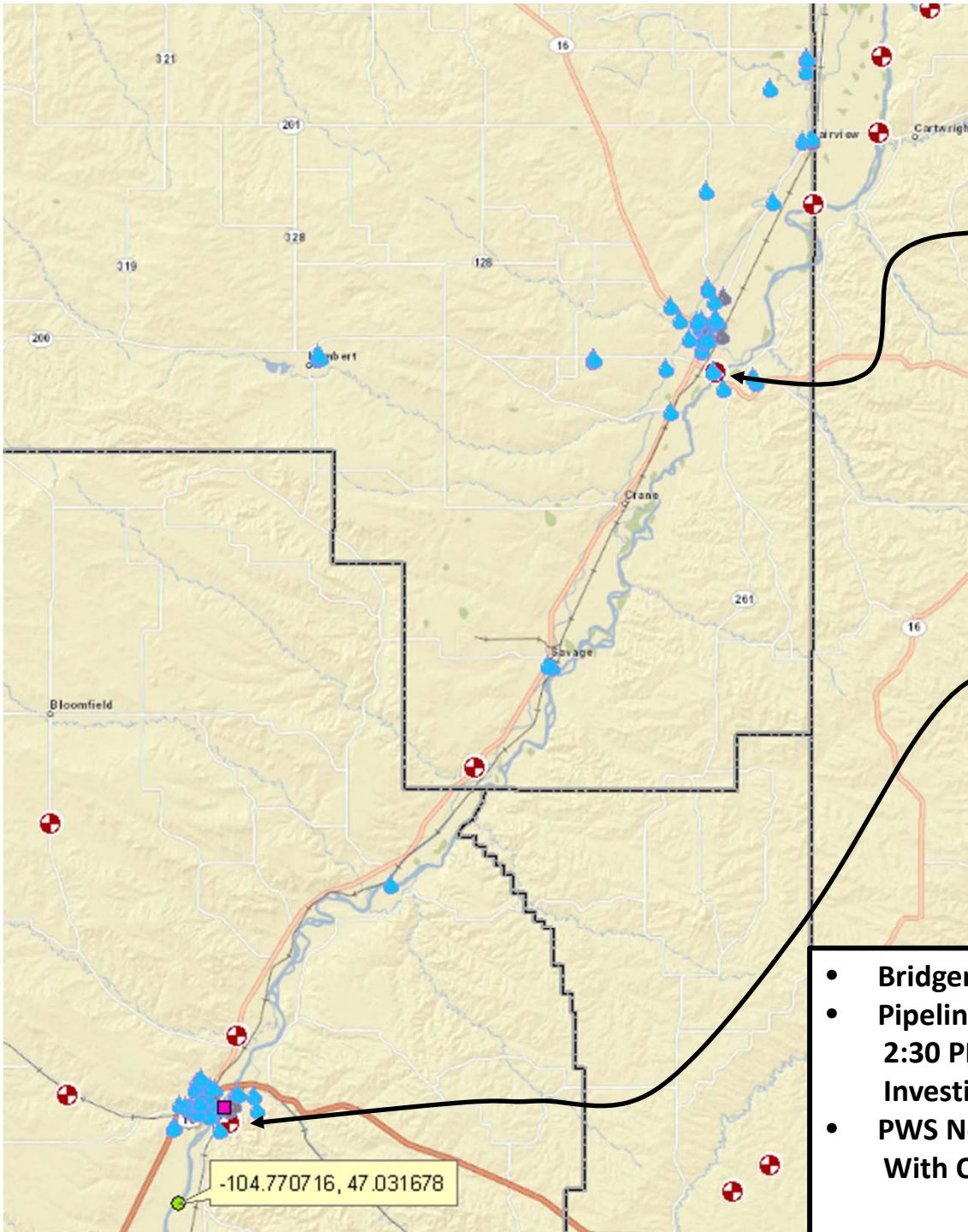


City of Glendive PWS

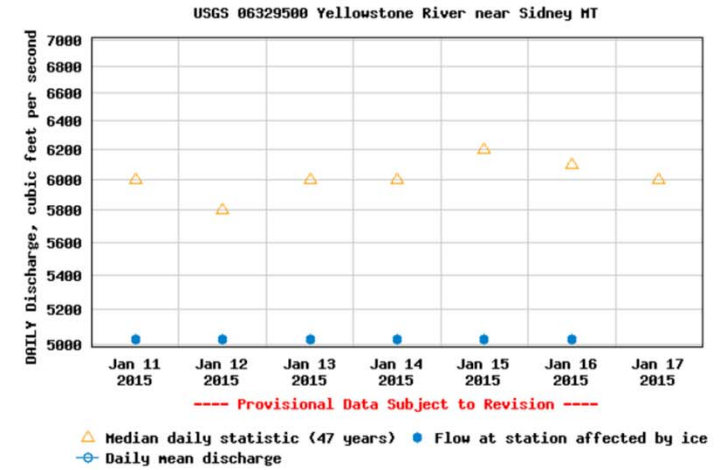
Bridger Pipeline Pressure Loss Reported At 2:30 PM 1/17/2015

9.22 Miles

-104.770716, 47.031678

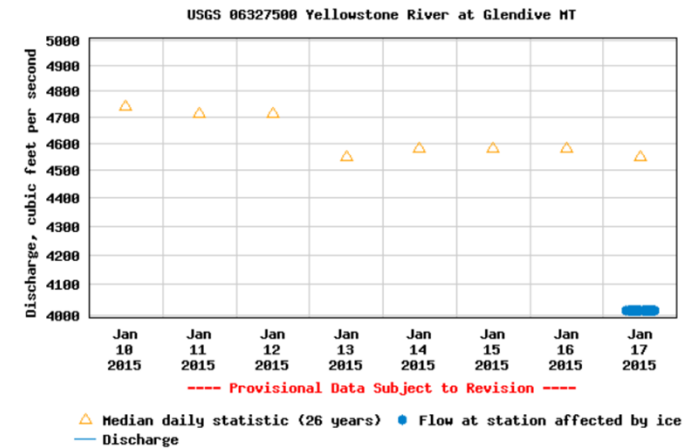


Discharge, cubic feet per second



Discharge, cubic feet per second

Most recent instantaneous value: 24,400 01-17-2015 17:00 MST



- **Bridger Pipeline Reported Pipeline Pressure Loss**
- **Pipeline Valves Where Isolated And Blocked Around 2:30 PM 1/17/2014. River is Froze Over Crews Are Investigating.**
- **PWS Notified – City of Glendive, Montana Dakota Utility With Courtesy Call to Williston ND Public Utilities**