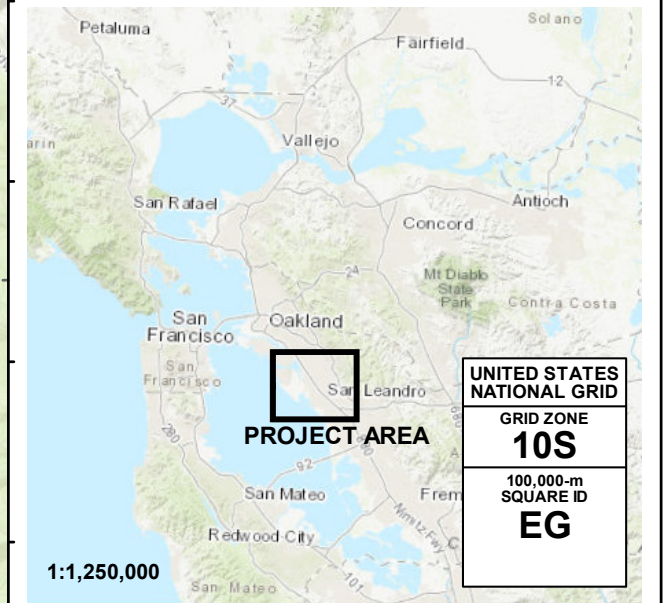




INUNDATION MAP FOR HYPOTHETICAL FAILURE OF  
**CHABOT DAM**  
ALAMEDA COUNTY, CA

SCENARIO: SUNNY DAY	PREP. DATE: NOV 2019	SHEET NO.: INDEX	DWR DAM NO.: 31.005	NATIONAL DAM ID NO.: CA00165
------------------------	-------------------------	---------------------	------------------------	---------------------------------



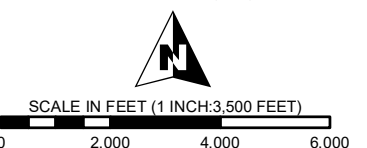
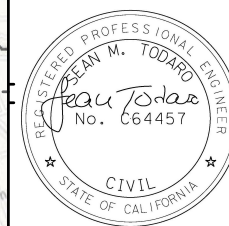
**LEGEND**

ARRIVAL TIME (HOURS)	MAXIMUM DEPTH (FEET)
STREAM CENTERLINE	1 - 3
DAM	3 - 5
RESERVOIRS	5 - 7
CITY BOUNDARY	7 - 9
MAP BOOK GRID	9 - 11
	> 11 ft depth symbol"/> > 11

**NOTES:**

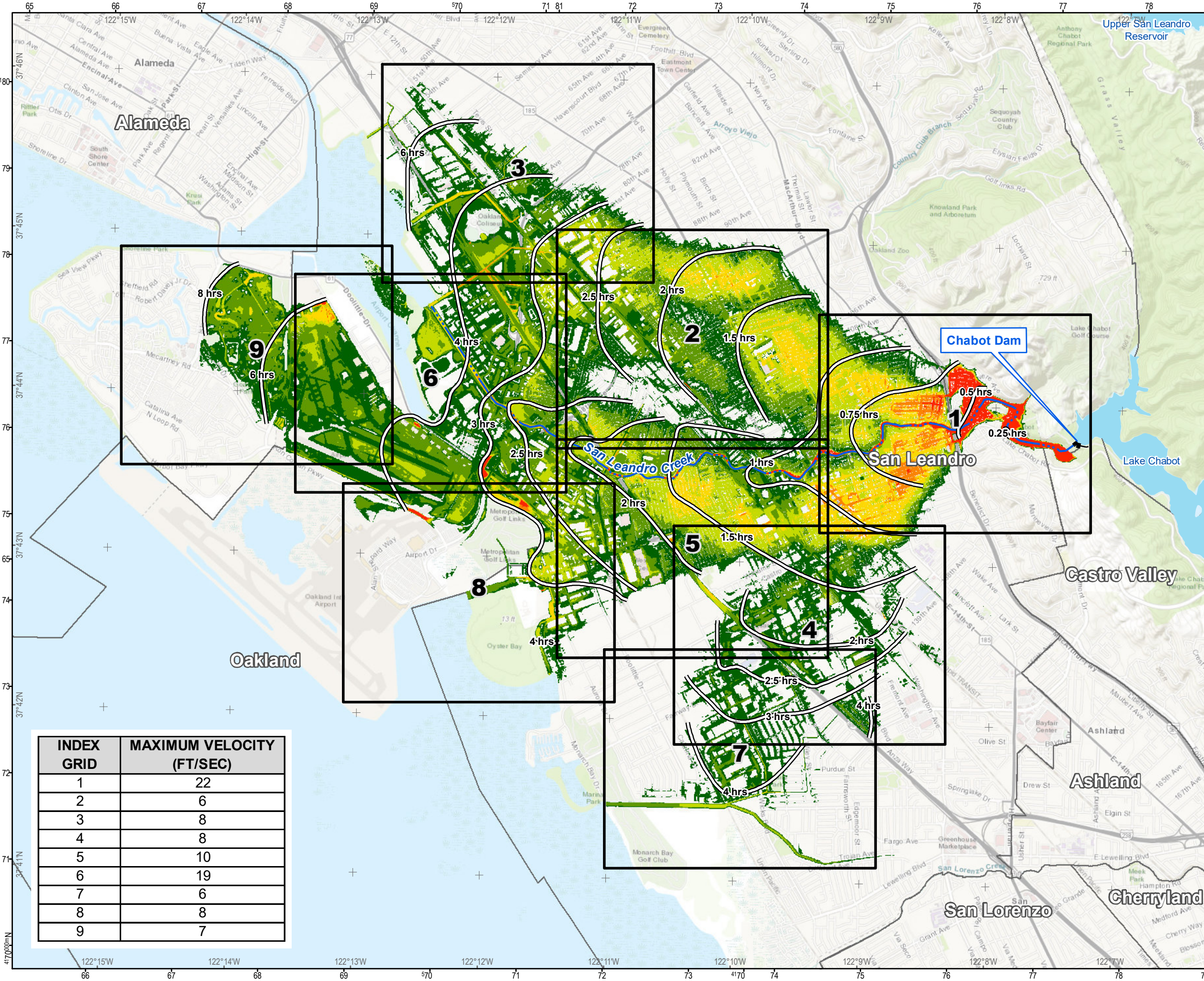
1. The information shown on the inundation map is approximate and should only be used as a guideline for emergency response and preparation purposes. It does not represent the integrity or safety of Chabot Dam.
2. The dam breach analysis was performed using the program HEC-RAS, Version 5.0.5. Elevations in the study reference NAVD88.
3. Maximum velocity depends on factors such as ground slope and roughness, and therefore varies.
4. Security-sensitive infrastructure may not be shown on this map.

**MAP PROJECTION:**  
California Teale Albers (feet), NAD83

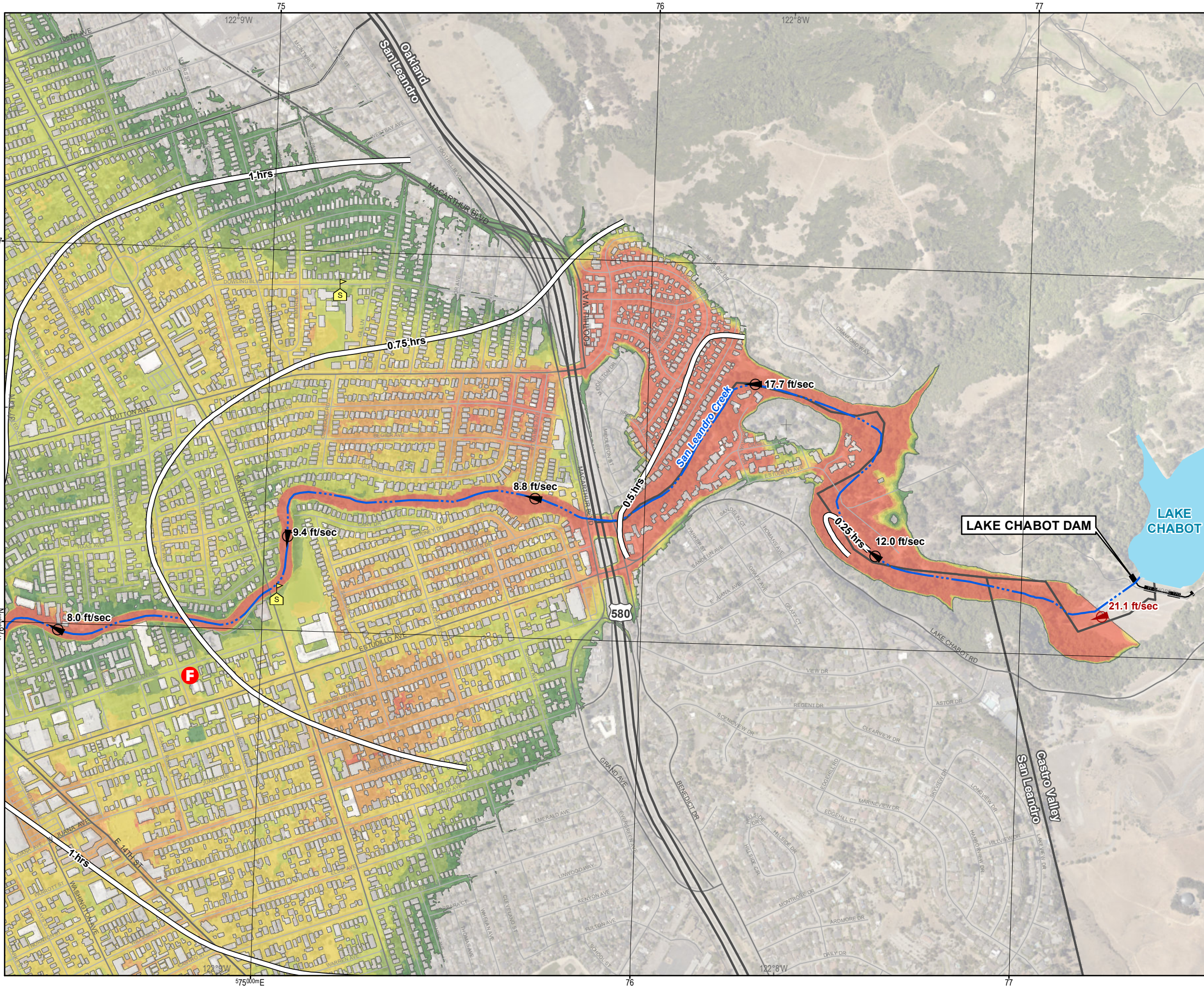


REFERENCE:  
GRID OVERLAY, United States National Grid (meters), NAD83  
GRATICULE, Geographic Coordinate System, NAD83 (DDM)

INDEX GRID	MAXIMUM VELOCITY (FT/SEC)
1	22
2	6
3	8
4	8
5	10
6	19
7	6
8	8
9	7

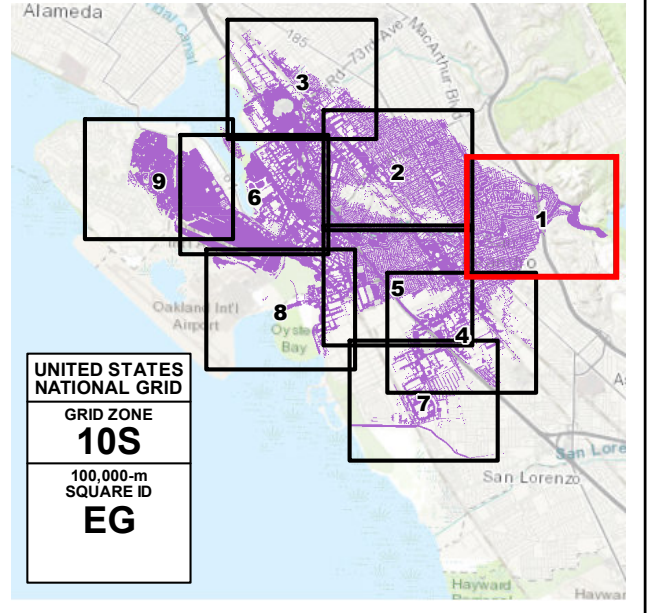






**EBMUD** INUNDATION MAP FOR HYPOTHETICAL FAILURE OF  
**CHABOT DAM**  
 ALAMEDA COUNTY, CA

<b>SCENARIO:</b> SUNNY DAY	<b>PREP. DATE:</b> NOV 2019	<b>SHEET NO.:</b> 1 OF 9	<b>DWR DAM NO.:</b> 31.005	<b>NATIONAL DAM ID NO.:</b> CA00165
-------------------------------	--------------------------------	-----------------------------	-------------------------------	--



**FLOOD WAVE MAXIMUM DEPTH (feet)**

- 1 - 3
- 3 - 5
- 5 - 7
- 7 - 9
- 9 - 11
- > 11

**LEGEND:**

- F** FIRE STATIONS
- S** SCHOOLS
- ARRIVAL TIME (HOURS)
- STREAM CENTERLINE
- DAM
- RESERVOIRS
- MAXIMUM VELOCITY AND DIRECTION AT SELECTED LOCATION
- MAXIMUM VELOCITY AND DIRECTION ON SHEET
- CITY LIMITS

**NOTES:**

- The information shown on the inundation map is approximate and should only be used as a guideline for emergency response and preparation purposes. It does not represent the integrity or safety of Chabot Dam.
- The dam breach analysis was performed using the program HEC-RAS, Version 5.0.5. Elevations in the study reference NAVD88.
- Maximum velocity depends on factors such as ground slope and roughness, and therefore varies.
- Security-sensitive infrastructure may not be shown on this map.

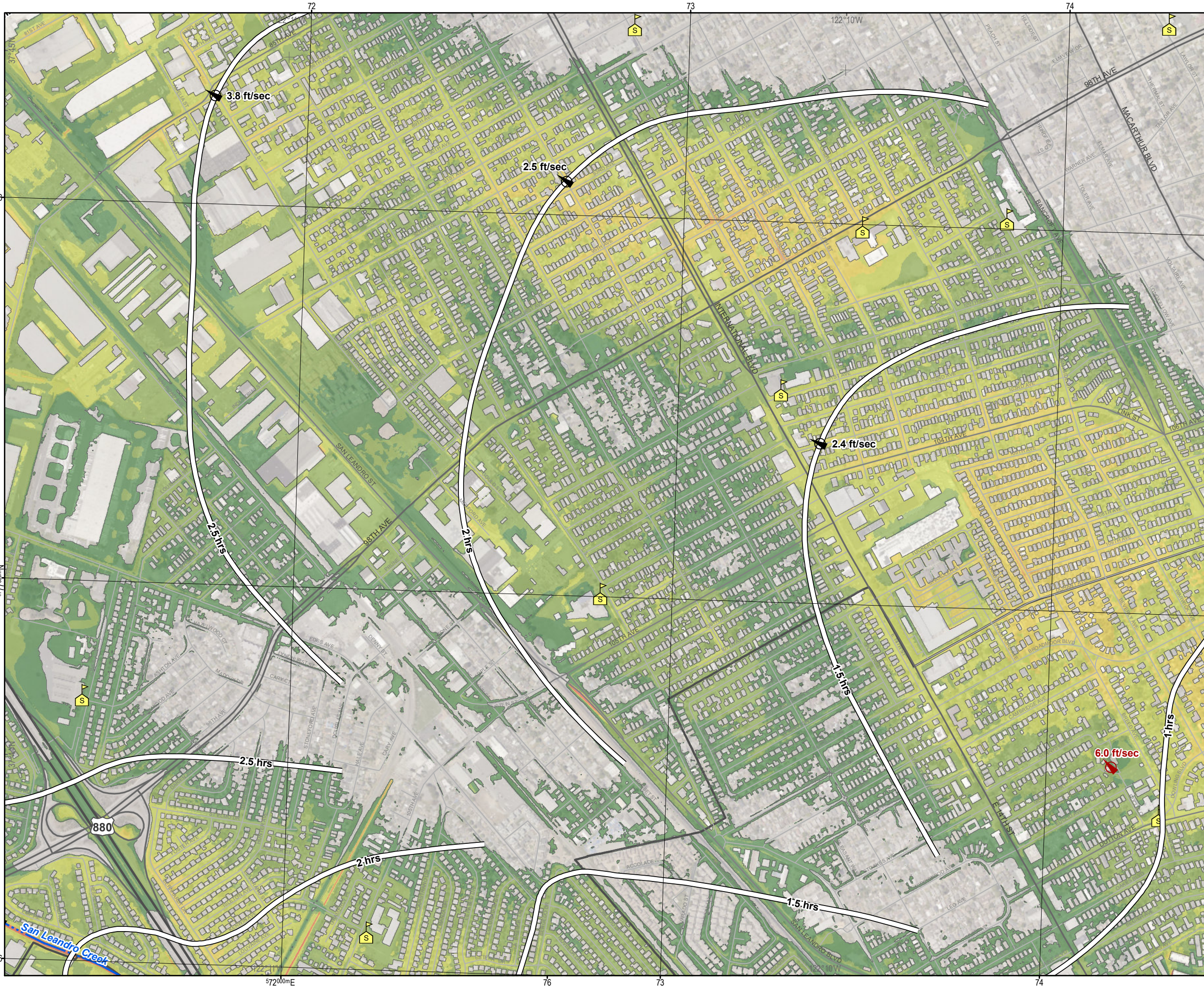
**MAP PROJECTION:**  
California Teale Albers (feet), NAD83

**SCALE IN FEET (1 INCH=800 FEET)**

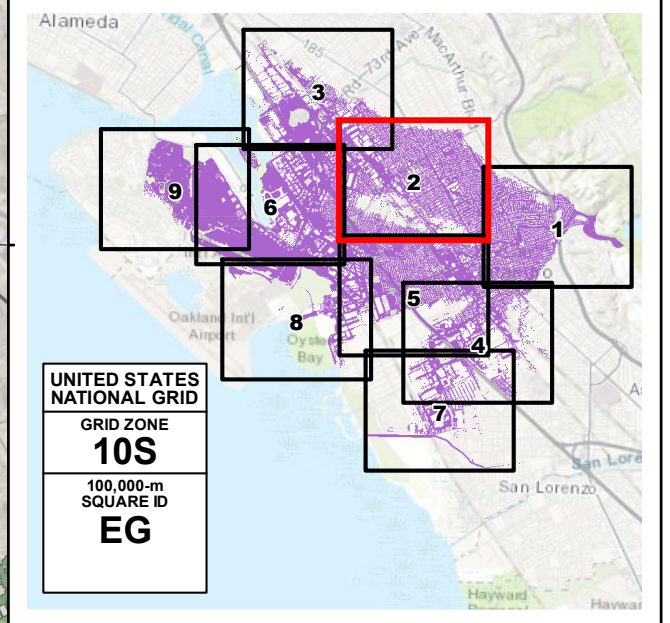
0 400 800 1,200

**REFERENCE:**  
GRID OVERLAY, United States National Grid (meters), NAD83  
GRATICULE, Geographic Coordinate System, NAD83 (DDM)





<b>INUNDATION MAP FOR HYPOTHETICAL FAILURE OF CHABOT DAM</b> ALAMEDA COUNTY, CA				
<b>SCENARIO:</b> SUNNY DAY	<b>PREP. DATE:</b> NOV 2019	<b>SHEET NO.:</b> 2 OF 9	<b>DWR DAM NO.:</b> 31.005	<b>NATIONAL DAM ID NO.:</b> CA00165



**FLOOD WAVE MAXIMUM DEPTH (feet)**

1 - 3
3 - 5
5 - 7
7 - 9
9 - 11
> 11

**ARRIVAL TIME (HOURS)**

**STREAM CENTERLINE**

**MAXIMUM VELOCITY AND DIRECTION AT SELECTED LOCATION**

**MAXIMUM VELOCITY AND DIRECTION ON SHEET**

**CITY LIMITS**

**SCHOOLS**

- NOTES:**
- The information shown on the inundation map is approximate and should only be used as a guideline for emergency response and preparation purposes. It does not represent the integrity or safety of Chabot Dam.
  - The dam breach analysis was performed using the program HEC-RAS, Version 5.0.5. Elevations in the study reference NAVD88.
  - Maximum velocity depends on factors such as ground slope and roughness, and therefore varies.
  - Security-sensitive infrastructure may not be shown on this map.

**MAP PROJECTION:**  
California Teale Albers (feet), NAD83

**SCALE IN FEET (1 INCH=800 FEET)**

0 400 800 1,200

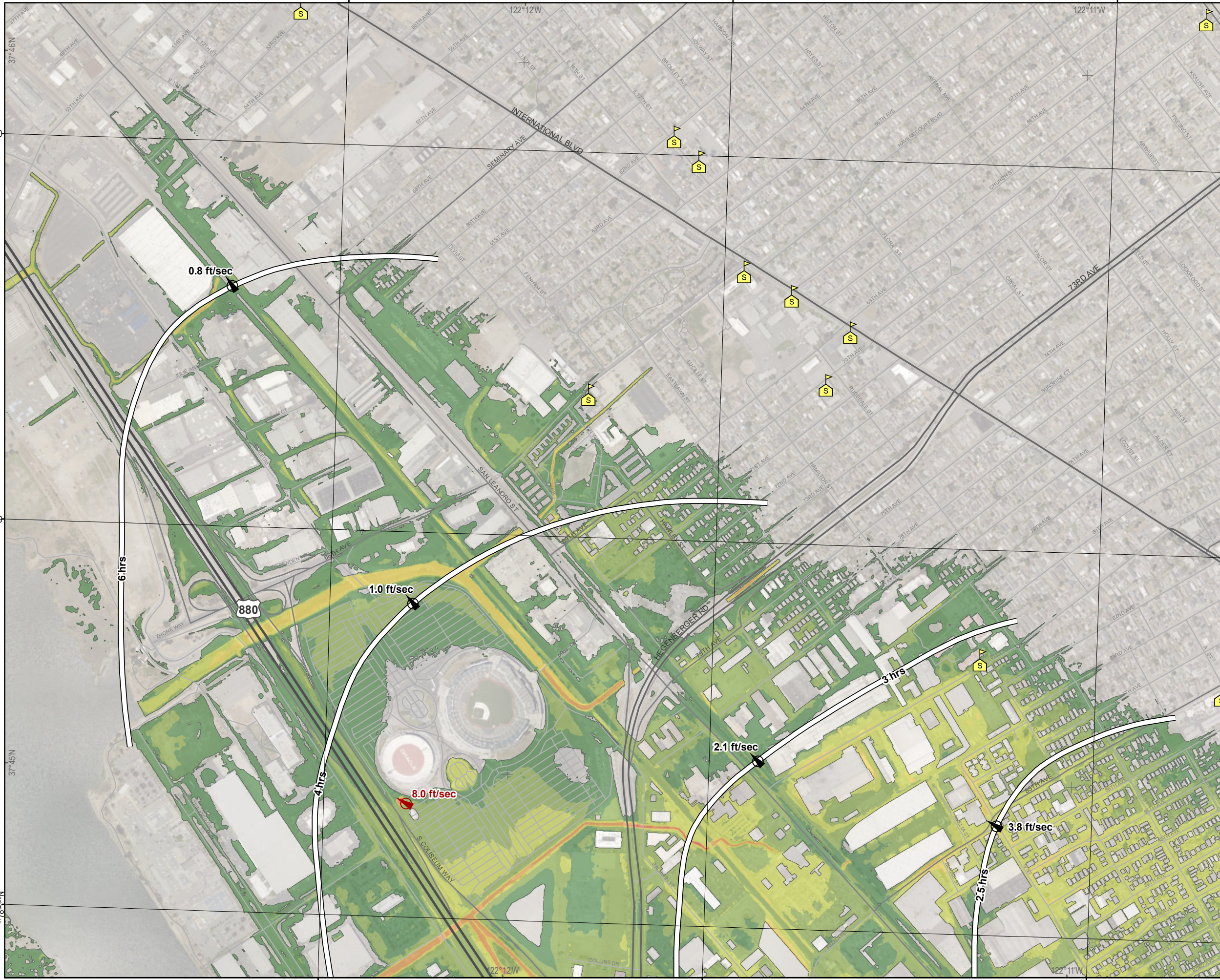
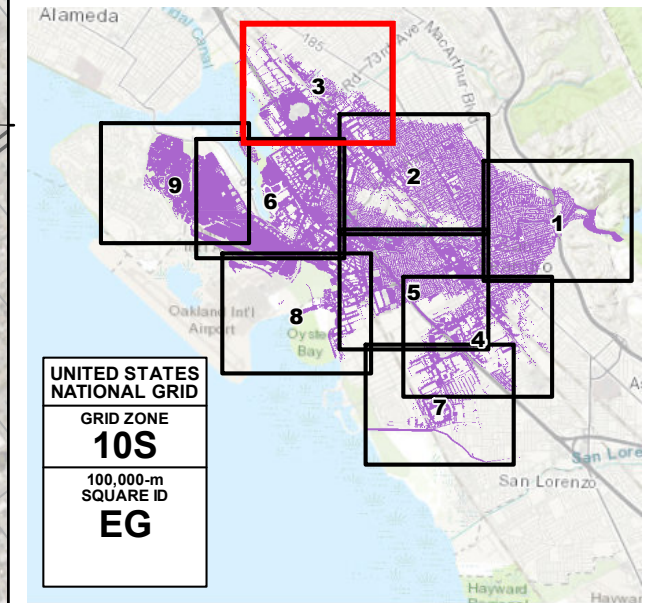
**REFERENCE:**  
GRID OVERLAY, United States National Grid (meters), NAD83  
GRATICULE, Geographic Coordinate System, NAD83 (DDM)





INUNDATION MAP FOR HYPOTHETICAL FAILURE OF  
**CHABOT DAM**  
 ALAMEDA COUNTY, CA

SCENARIO: SUNNY DAY	PREP. DATE: NOV 2019	SHEET NO.: 3 OF 9	DWR DAM NO.: 31.005	NATIONAL DAM ID NO.: CA00165
------------------------	-------------------------	----------------------	------------------------	---------------------------------



**FLOOD WAVE MAXIMUM DEPTH (feet)**

- 1 - 3
- 3 - 5
- 5 - 7
- 7 - 9
- 9 - 11
- > 11

**ARRIVAL TIME (HOURS)**

**SCHOOLS**

**MAXIMUM VELOCITY AND DIRECTION AT SELECTED LOCATION**

**MAXIMUM VELOCITY AND DIRECTION ON SHEET**

**CITY LIMITS**

**NOTES:**

- The information shown on the inundation map is approximate and should only be used as a guideline for emergency response and preparation purposes. It does not represent the integrity or safety of Chabot Dam.
- The dam breach analysis was performed using the program HEC-RAS, Version 5.0.5. Elevations in the study reference NAVD88.
- Maximum velocity depends on factors such as ground slope and roughness, and therefore varies.
- Security-sensitive infrastructure may not be shown on this map.

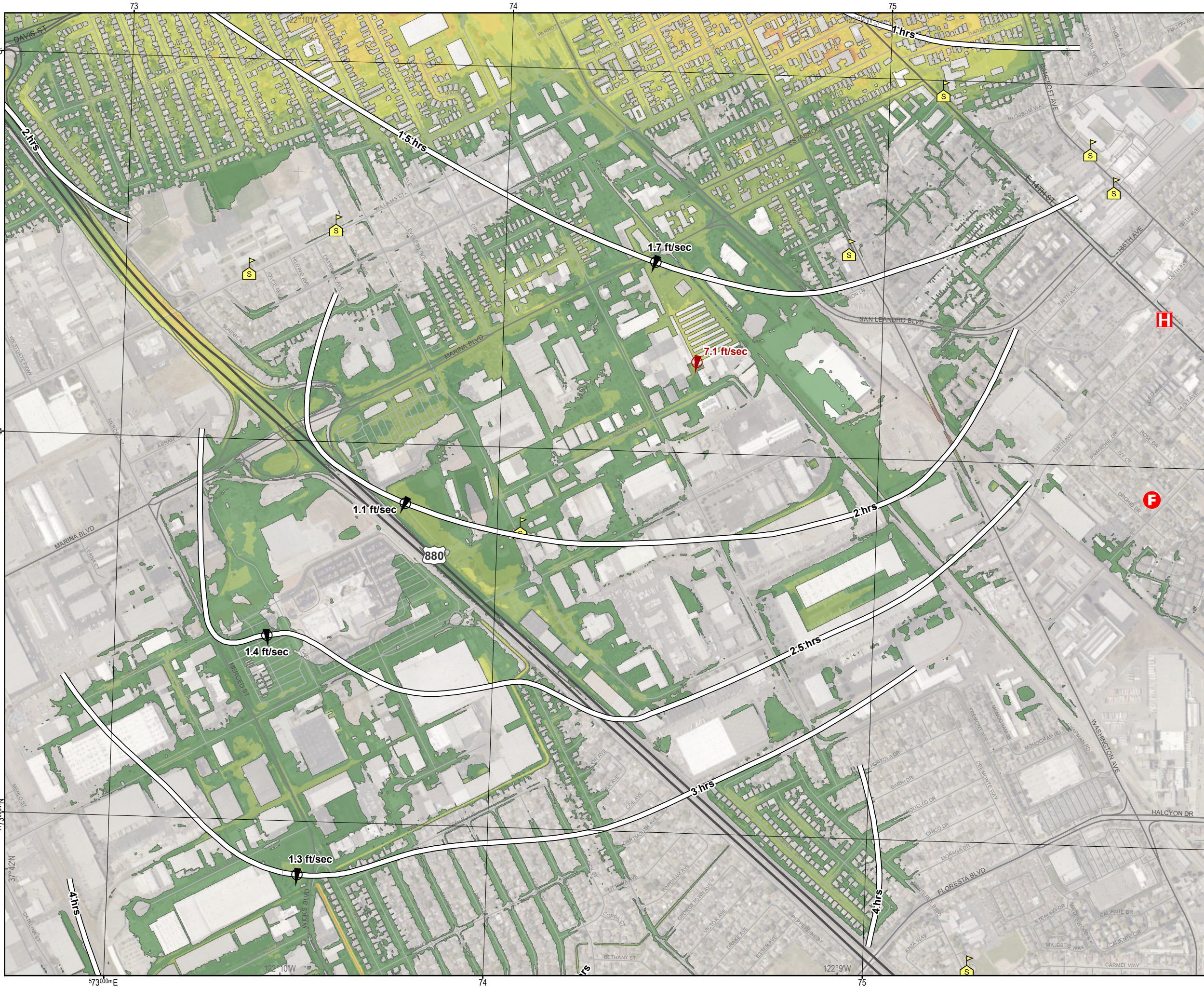
**MAP PROJECTION:**  
California Teale Albers (feet), NAD83

**SCALE IN FEET (1 INCH=800 FEET)**

0 400 800 1,200

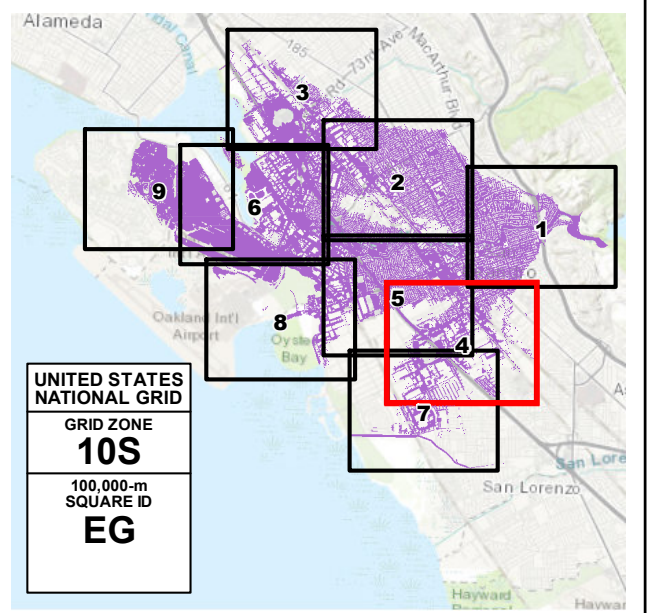
**REFERENCE:**  
GRID OVERLAY, United States National Grid (meters), NAD83  
GRATICULE, Geographic Coordinate System, NAD83 (DDM)





**EBMUD** INUNDATION MAP FOR HYPOTHETICAL FAILURE OF  
**CHABOT DAM**  
 ALAMEDA COUNTY, CA

<b>SCENARIO:</b> SUNNY DAY	<b>PREP. DATE:</b> NOV 2019	<b>SHEET NO.:</b> 4 OF 9	<b>DWR DAM NO.:</b> 31.005	<b>NATIONAL DAM ID NO.:</b> CA00165
-------------------------------	--------------------------------	-----------------------------	-------------------------------	--



**FLOOD WAVE MAXIMUM DEPTH (feet)**

- 1 - 3
- 3 - 5
- 5 - 7
- 7 - 9
- 9 - 11
- > 11

- F FIRE STATIONS
- S SCHOOLS
- H HOSPITALS
- ARRIVAL TIME (HOURS)
- ↻ MAXIMUM VELOCITY AND DIRECTION AT SELECTED LOCATION
- ↻ MAXIMUM VELOCITY AND DIRECTION ON SHEET
- CITY LIMITS

**NOTES:**

- The information shown on the inundation map is approximate and should only be used as a guideline for emergency response and preparation purposes. It does not represent the integrity or safety of Chabot Dam.
- The dam breach analysis was performed using the program HEC-RAS, Version 5.0.5. Elevations in the study reference NAVD88.
- Maximum velocity depends on factors such as ground slope and roughness, and therefore varies.
- Security-sensitive infrastructure may not be shown on this map.

**MAP PROJECTION:**  
California Teale Albers (feet), NAD83

SCALE IN FEET (1 INCH=800 FEET)

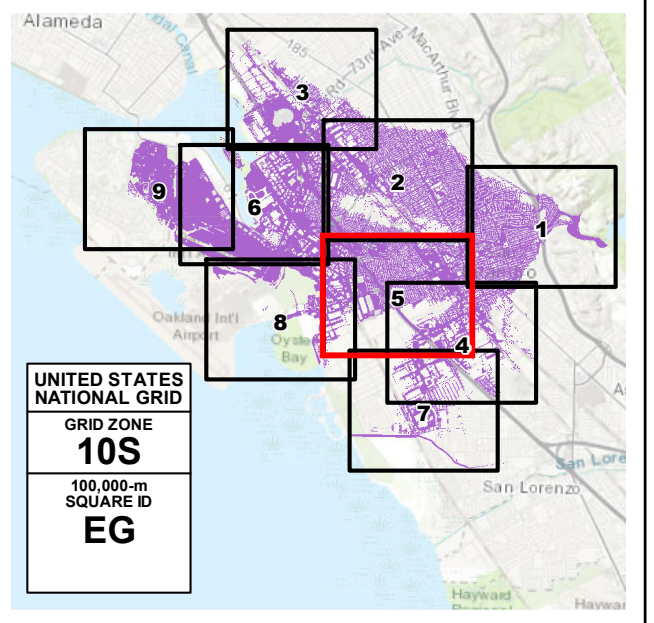
**REFERENCE:**  
GRID OVERLAY, United States National Grid (meters), NAD83  
GRATICULE, Geographic Coordinate System, NAD83 (DDM)





**EBMUD** INUNDATION MAP FOR HYPOTHETICAL FAILURE OF  
**CHABOT DAM**  
 ALAMEDA COUNTY, CA

SCENARIO: SUNNY DAY	PREP. DATE: NOV 2019	SHEET NO.: 5 OF 9	DWR DAM NO.: 31.005	NATIONAL DAM ID NO.: CA00165
------------------------	-------------------------	----------------------	------------------------	---------------------------------



**FLOOD WAVE**  
**MAXIMUM DEPTH (feet)**

- 1 - 3
- 3 - 5
- 5 - 7
- 7 - 9
- 9 - 11
- > 11

**LEGEND:**

- F** FIRE STATIONS
- P** POLICE STATIONS
- S** SCHOOLS
- ARRIVAL TIME (HOURS)
- STREAM CENTERLINE
- MAXIMUM VELOCITY AND DIRECTION AT SELECTED LOCATION
- MAXIMUM VELOCITY AND DIRECTION ON SHEET
- CITY LIMITS

**NOTES:**

- The information shown on the inundation map is approximate and should only be used as a guideline for emergency response and preparation purposes. It does not represent the integrity or safety of Chabot Dam.
- The dam breach analysis was performed using the program HEC-RAS, Version 5.0.5. Elevations in the study reference NAVD88.
- Maximum velocity depends on factors such as ground slope and roughness, and therefore varies.
- Security-sensitive infrastructure may not be shown on this map.

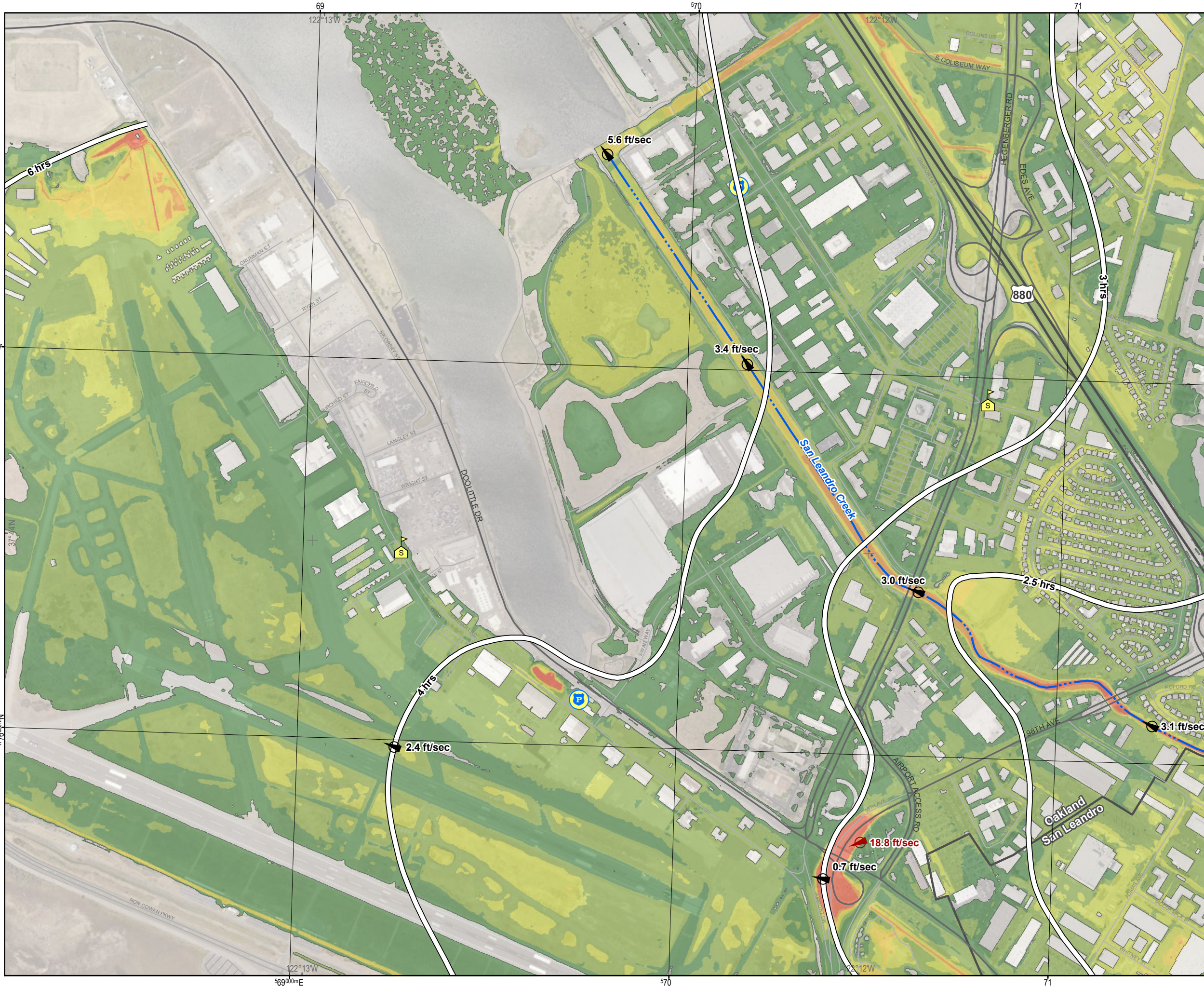
**MAP PROJECTION:**  
 California Teale Albers (feet), NAD83

SCALE IN FEET (1 INCH=800 FEET)

0 400 800 1,200

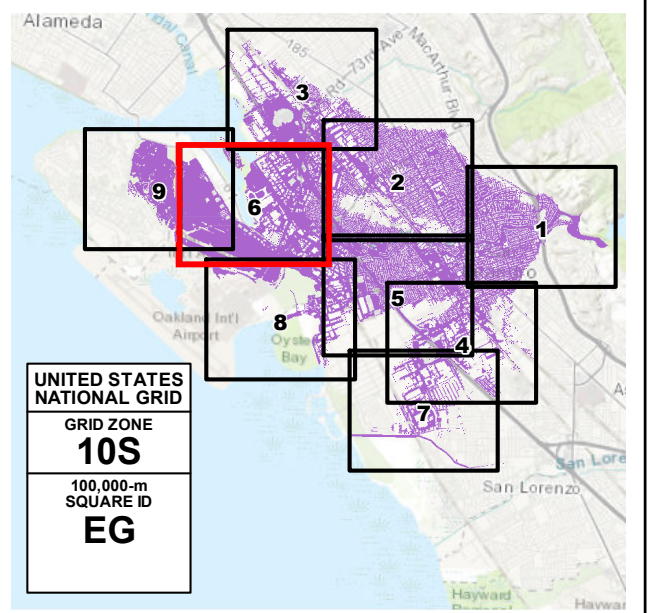
REFERENCE:  
 GRID OVERLAY, United States National Grid (meters), NAD83  
 GRATICULE, Geographic Coordinate System, NAD83 (DDM)





**EBMUD** INUNDATION MAP FOR HYPOTHETICAL FAILURE OF  
**CHABOT DAM**  
 ALAMEDA COUNTY, CA

<b>SCENARIO:</b> SUNNY DAY	<b>PREP. DATE:</b> NOV 2019	<b>SHEET NO.:</b> 6 OF 9	<b>DWR DAM NO.:</b> 31.005	<b>NATIONAL DAM ID NO.:</b> CA00165
-------------------------------	--------------------------------	-----------------------------	-------------------------------	--



**FLOOD WAVE**  
**MAXIMUM DEPTH (feet)**

- 1 - 3
- 3 - 5
- 5 - 7
- 7 - 9
- 9 - 11
- > 11

**LEGEND:**

- POLICE STATIONS
- SCHOOLS
- ARRIVAL TIME (HOURS)
- STREAM CENTERLINE
- MAXIMUM VELOCITY AND DIRECTION AT SELECTED LOCATION
- MAXIMUM VELOCITY AND DIRECTION ON SHEET
- CITY LIMITS

**NOTES:**

- The information shown on the inundation map is approximate and should only be used as a guideline for emergency response and preparation purposes. It does not represent the integrity or safety of Chabot Dam.
- The dam breach analysis was performed using the program HEC-RAS, Version 5.0.5. Elevations in the study reference NAVD88.
- Maximum velocity depends on factors such as ground slope and roughness, and therefore varies.
- Security-sensitive infrastructure may not be shown on this map.

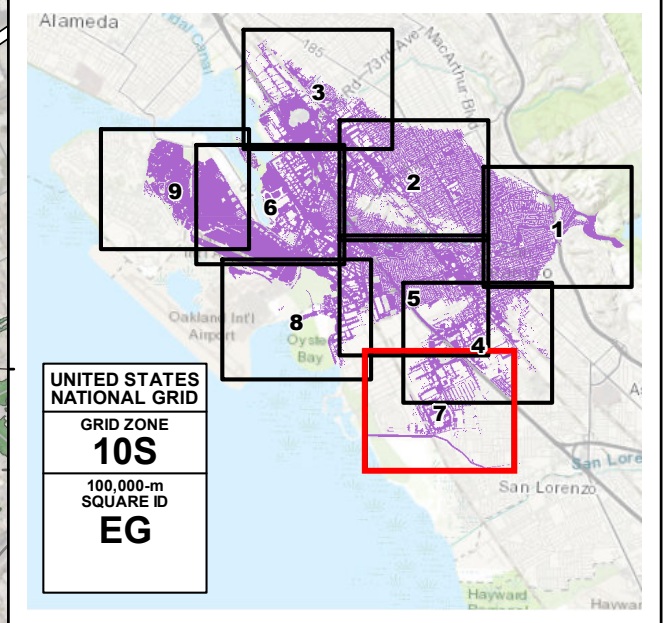
**MAP PROJECTION:**  
 California Teale Albers (feet), NAD83

SCALE IN FEET (1 INCH:800 FEET)

0 400 800 1,200

**REFERENCE:**  
 GRID OVERLAY, United States National Grid (meters), NAD83  
 GRATICULE, Geographic Coordinate System, NAD83 (DDM)





**FLOOD WAVE MAXIMUM DEPTH (feet)**

- 1 - 3
- 3 - 5
- 5 - 7
- 7 - 9
- 9 - 11
- > 11

**ARRIVAL TIME (HOURS)**

**MAXIMUM VELOCITY AND DIRECTION AT SELECTED LOCATION**

**MAXIMUM VELOCITY AND DIRECTION ON SHEET**

**CITY LIMITS**

**F** FIRE STATIONS

**S** SCHOOLS

**NOTES:**

- The information shown on the inundation map is approximate and should only be used as a guideline for emergency response and preparation purposes. It does not represent the integrity or safety of Chabot Dam.
- The dam breach analysis was performed using the program HEC-RAS, Version 5.0.5. Elevations in the study reference NAVD88.
- Maximum velocity depends on factors such as ground slope and roughness, and therefore varies.
- Security-sensitive infrastructure may not be shown on this map.

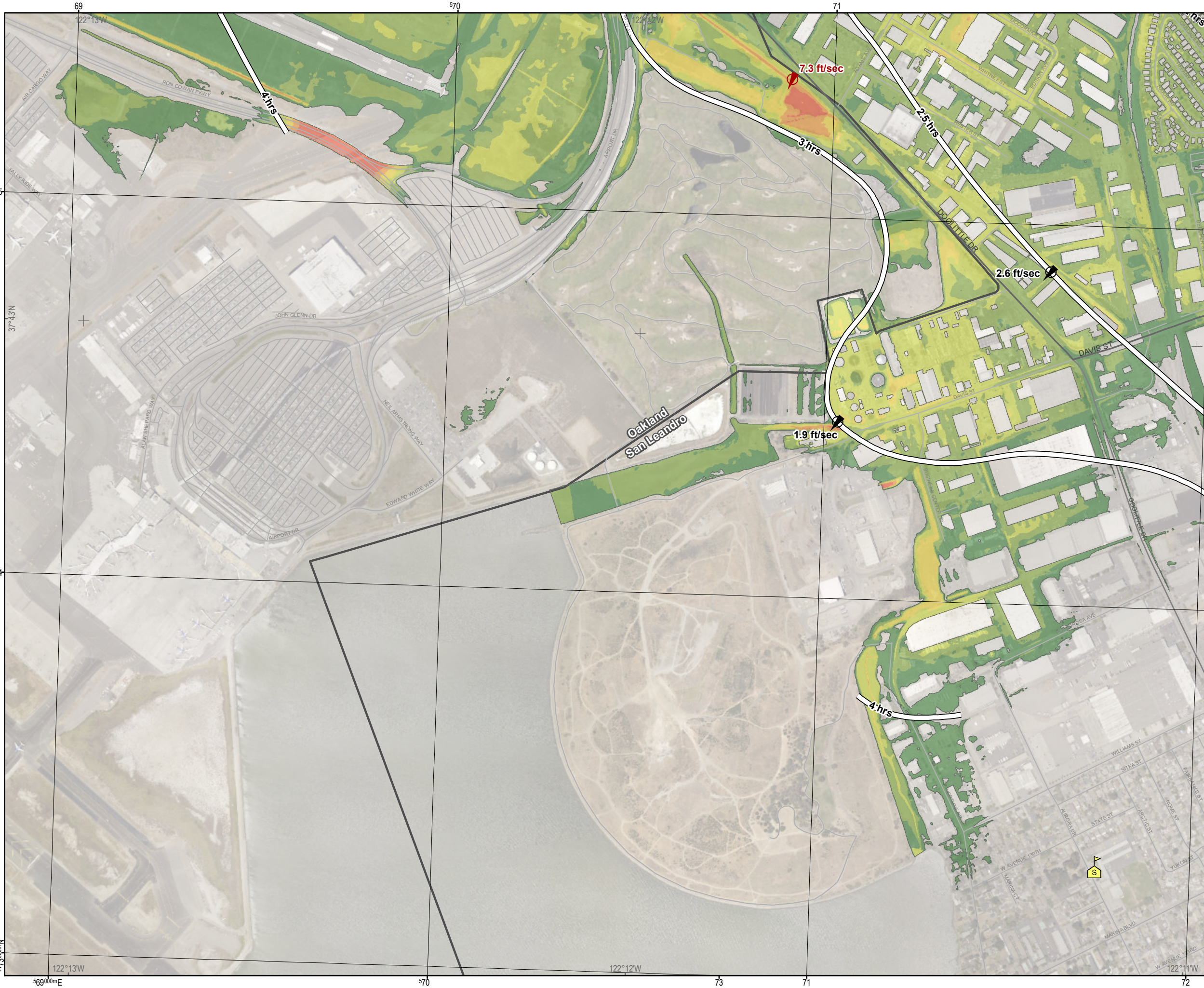
**MAP PROJECTION:**  
 California Teale Albers (feet), NAD83

**SCALE IN FEET (1 INCH:800 FEET)**

0 400 800 1,200

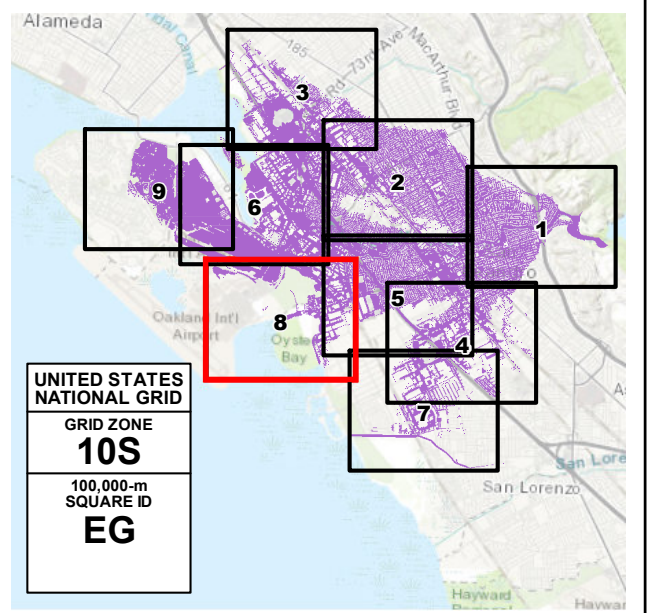
**REFERENCE:**  
 GRID OVERLAY, United States National Grid (meters), NAD83  
 GRATICULE, Geographic Coordinate System, NAD83 (DDM)





**EBMUD** INUNDATION MAP FOR HYPOTHETICAL FAILURE OF  
**CHABOT DAM**  
 ALAMEDA COUNTY, CA

<b>SCENARIO:</b> SUNNY DAY	<b>PREP. DATE:</b> NOV 2019	<b>SHEET NO.:</b> 8 OF 9	<b>DWR DAM NO.:</b> 31.005	<b>NATIONAL DAM ID NO.:</b> CA00165
-------------------------------	--------------------------------	-----------------------------	-------------------------------	--



**FLOOD WAVE MAXIMUM DEPTH (feet)**

- 1 - 3
- 3 - 5
- 5 - 7
- 7 - 9
- 9 - 11
- > 11

**ARRIVAL TIME (HOURS)**

**MAXIMUM VELOCITY AND DIRECTION AT SELECTED LOCATION**

**MAXIMUM VELOCITY AND DIRECTION ON SHEET**

**CITY LIMITS**

**SCHOOLS**

**NOTES:**

- The information shown on the inundation map is approximate and should only be used as a guideline for emergency response and preparation purposes. It does not represent the integrity or safety of Chabot Dam.
- The dam breach analysis was performed using the program HEC-RAS, Version 5.0.5. Elevations in the study reference NAVD88.
- Maximum velocity depends on factors such as ground slope and roughness, and therefore varies.
- Security-sensitive infrastructure may not be shown on this map.

**MAP PROJECTION:**  
California Teale Albers (feet), NAD83

**SCALE IN FEET (1 INCH=800 FEET)**

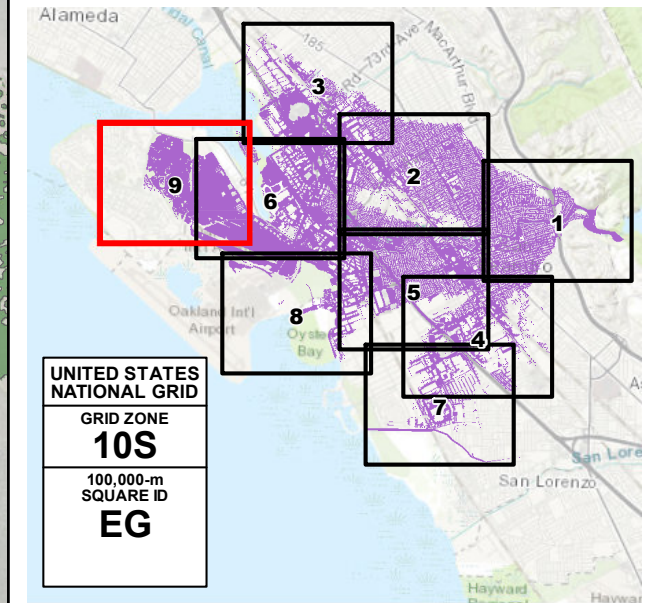
**REFERENCE:**  
GRID OVERLAY, United States National Grid (meters), NAD83  
GRATICULE, Geographic Coordinate System, NAD83 (DDM)





INUNDATION MAP FOR HYPOTHETICAL FAILURE OF  
**CHABOT DAM**  
 ALAMEDA COUNTY, CA

SCENARIO: SUNNY DAY	PREP. DATE: NOV 2019	SHEET NO.: 9 OF 9	DWR DAM NO.: 31.005	NATIONAL DAM ID NO.: CA00165
------------------------	-------------------------	----------------------	------------------------	---------------------------------



**FLOOD WAVE MAXIMUM DEPTH (feet)**

- 1 - 3
- 3 - 5
- 5 - 7
- 7 - 9
- 9 - 11
- > 11

**ARRIVAL TIME (HOURS)**

**SCHOOLS**

**MAXIMUM VELOCITY AND DIRECTION AT SELECTED LOCATION**

**MAXIMUM VELOCITY AND DIRECTION ON SHEET**

**CITY LIMITS**

**NOTES:**

- The information shown on the inundation map is approximate and should only be used as a guideline for emergency response and preparation purposes. It does not represent the integrity or safety of Chabot Dam.
- The dam breach analysis was performed using the program HEC-RAS, Version 5.0.5. Elevations in the study reference NAVD88.
- Maximum velocity depends on factors such as ground slope and roughness, and therefore varies.
- Security-sensitive infrastructure may not be shown on this map.

**MAP PROJECTION:**  
California Teale Albers (feet), NAD83

**REGISTERED PROFESSIONAL ENGINEER**  
 SEAN M. TODARO  
 No. C64457  
 CIVIL  
 STATE OF CALIFORNIA

**REFERENCE:**  
 GRID OVERLAY, United States National Grid (meters), NAD83  
 GRATICULE, Geographic Coordinate System, NAD83 (DDM)

