

Moosehead Lake Ski Resort



5.8.2020

Quality Jobs and Economic Development for Greenville

PROPOSED NEW JOBS CREATED:

Ski area operations

(Full time: 80-100; Part time: 90-120) 170-220

Hotel Operations 40-65

Marina 8-12

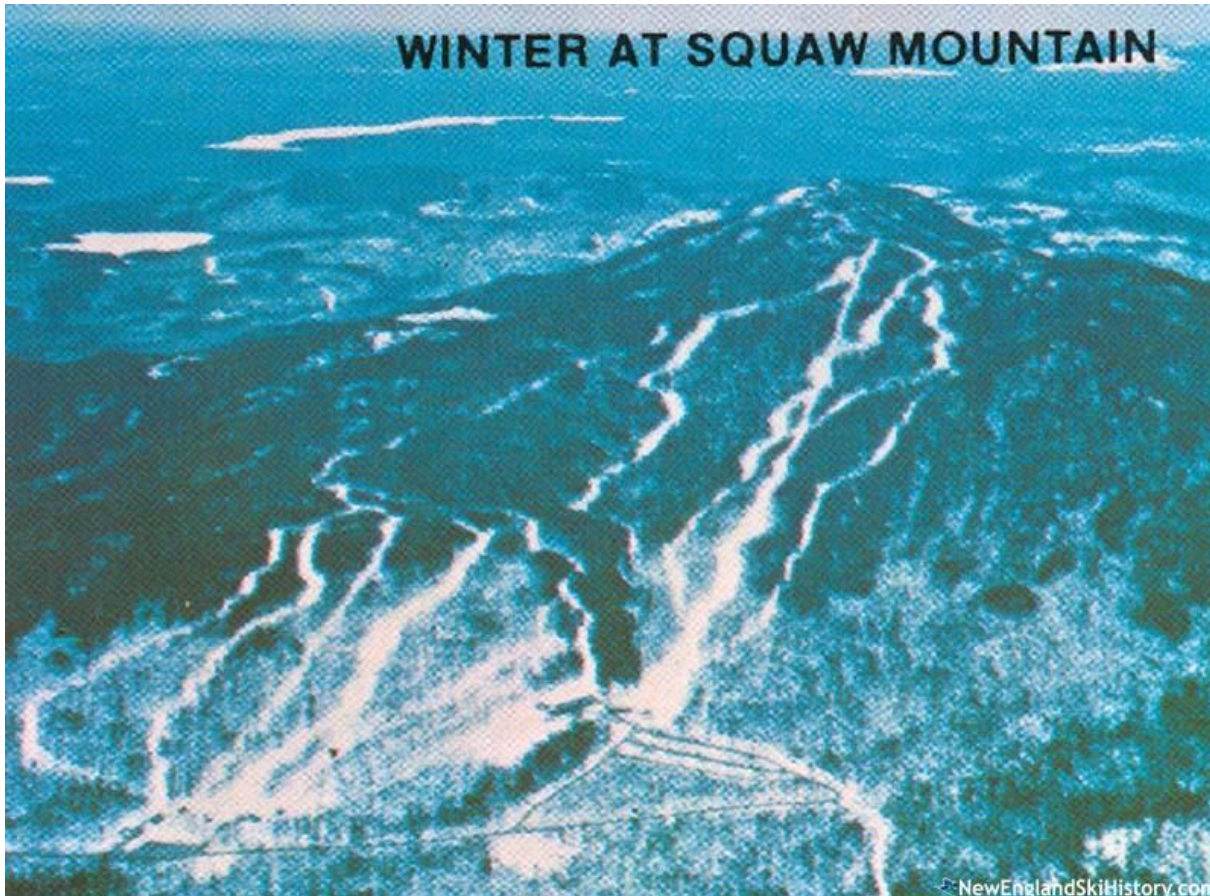
Retail 40-60

Construction 80-120

TOTAL NEW JOBS

358-477

The History of Big Squaw



1963

Big Squaw Mountain opens with just a TBar

1967

Expanded to include the summit double chair

1986

TBar is moved to beginner area and a triple chair was installed

2004

The mountain was closed after a ski lift accident on the summit double chair

2012

Friends of Squaw Mountain re-opened the mountain

2019

The property is put under contract by Big Lake Development Company, LLC

2022

Moosehead Lake Ski Resort is developed and open for business



ZONING:

Existing D-GN Zone

WATERFRONT ACRES:

12.3-Acre Marina site directly on Moosehead Lake

CURRENT USE:

Ski Area operations since 1963/64 season

CONSERVED LAND:

1 Million Acres of permanently conserved land within 25 miles

GROSS ACRES:

1,700 Acres

FEDERAL OPPORTUNITY ZONE:

State of Maine Designated Opportunity Zone

DEVELOPMENT RIGHTS:

Preliminary approvals for continued ski area operations, new base lodge, hotel, restaurant complex, pedestrian village, marina & 450 residential units.

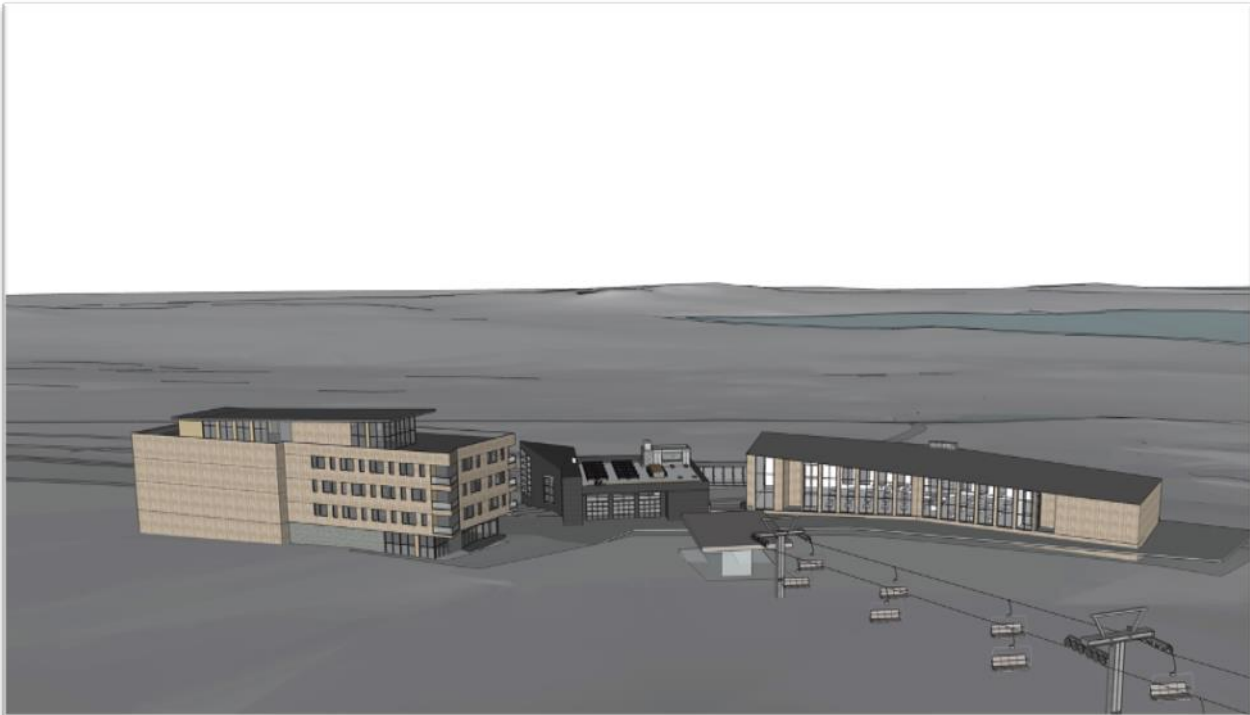
Property Highlights

Moosehead Lake Ski Resort and the Greenville area represent one of the only true Four-Season resort venues in all of New England. Combining a family friendly ski experience with a high-quality, big lake experience will be a unique product in the New England resort industry. We believe the ability to enjoy the full diversity of lake and mountain activities, year-round, will drive price points and sales velocity.



Project Vision

The heart of Moosehead Lake Ski Resort is the Mountain Village. Upon completion, it will be home to guest cabins, picturesque mountain homes, condominiums, award-winning restaurants, abundant outdoor activities and rustically elegant conference facilities tucked into the surrounding forest. *Unmatched natural scenery and countless activities in every season* make for a truly unique atmosphere. Guests enjoy everything from alpine and cross county skiing, snowboarding and snowmobiling in the winter, to hiking, mountain biking, zip lining, boating, whitewater rafting and fly fishing on *Maine's largest lake* and countless streams and ponds in summer and fall.



scott simons architects

designed for Nathan Swenson
75 York Street, Portland, ME 04101
207.772.4656 www.SimonsArchitects.com

Moosehead Mountain Resort

22 April 2020

- ❖ New Quad chairlift
- ❖ New surface lift connecting upper & lower base areas
- ❖ Expand and improve existing trail system
- ❖ New Base Lodge & Brew Pub
- ❖ Snow-making pump station and pipeline from Mountain View Pond
- ❖ Outdoor skating rink in Mountain Village
- ❖ Zip-Rider system
- ❖ 150 slip Marina on Moosehead Lake

- ❖ 60 Hotel rooms
- ❖ 108 Condos
- ❖ 315 Townhomes
- ❖ 60 SF Homes



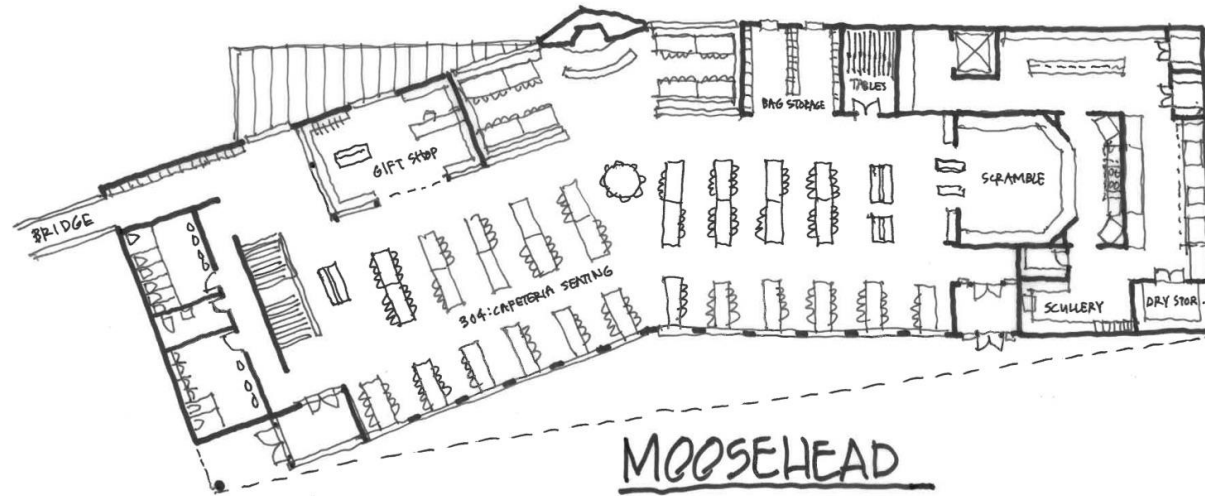


ADDITIONAL ATTRACTION OPPORTUNITIES

The unique placement of the Moosehead Lake Ski Resort on lake frontage gives way to the opportunity to attract visitors interested in a wide array of outdoor activities:

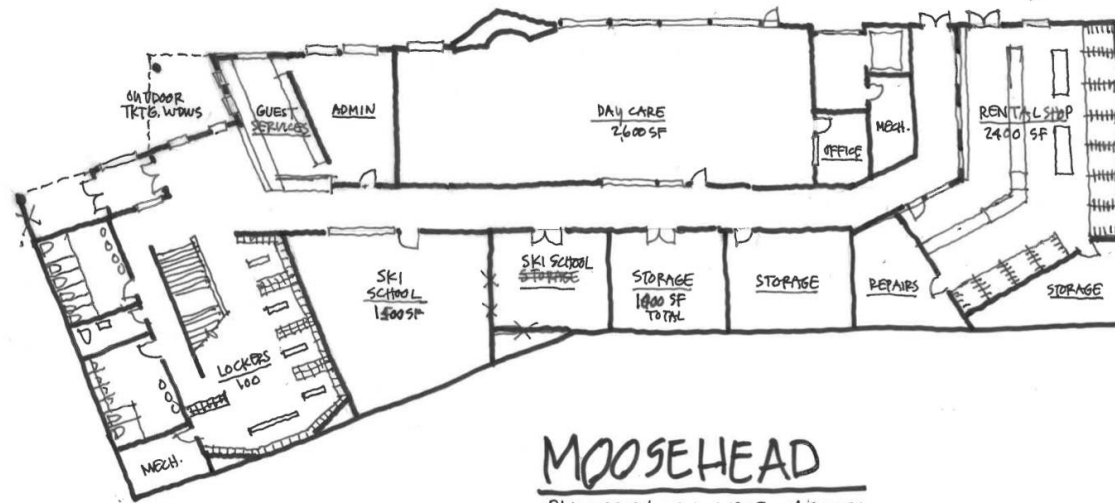
- Alpine Skiing
- Snowmobiling
- Cross Country Skiing
- Snowshoeing
- Ice fishing
- Zip lining
- Mountain biking
- Fishing
- Hiking
- Boating





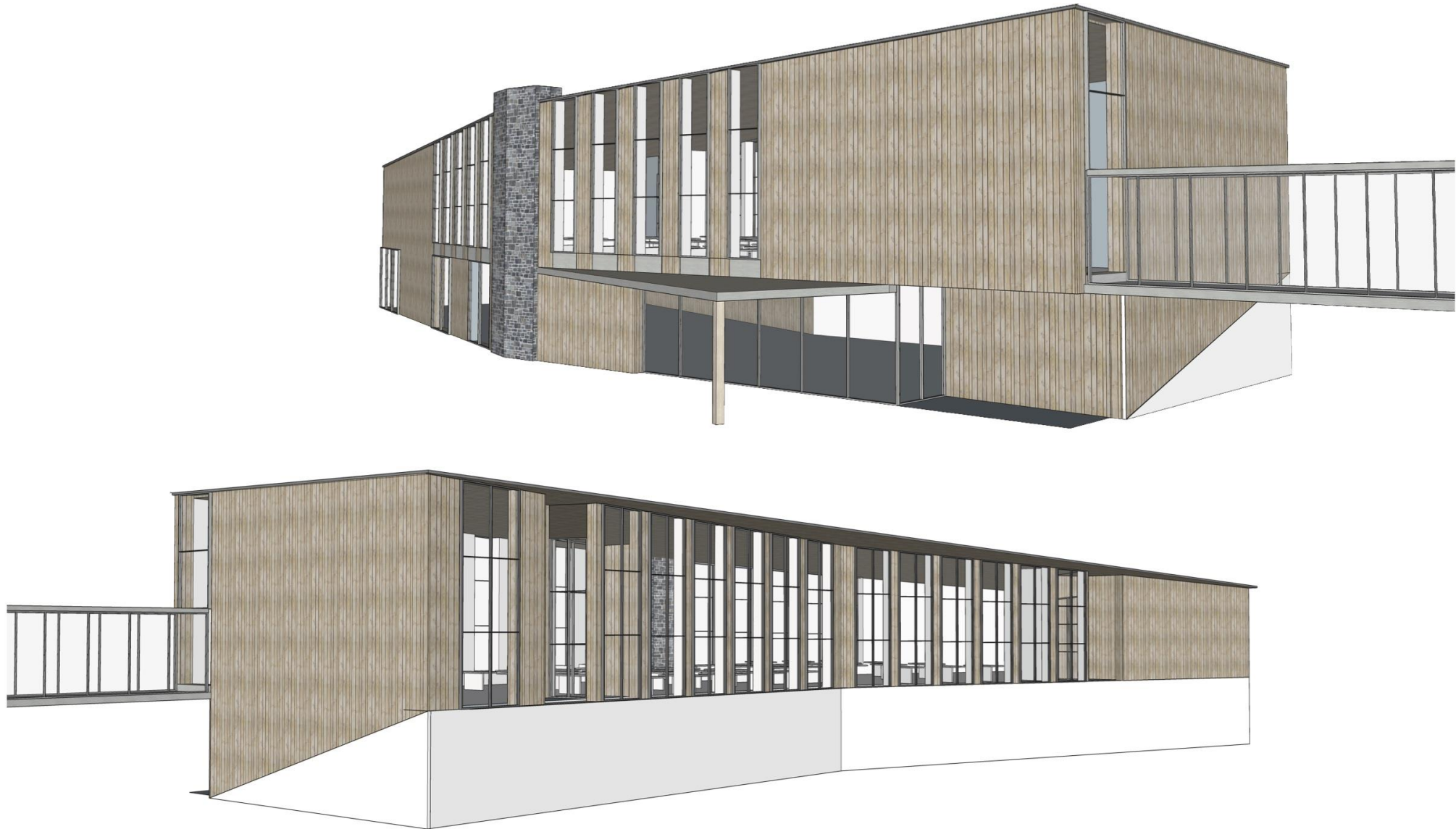
MOOSEHEAD

PLAN STUDY @ LODGE 04.20.2020



MOOSEHEAD

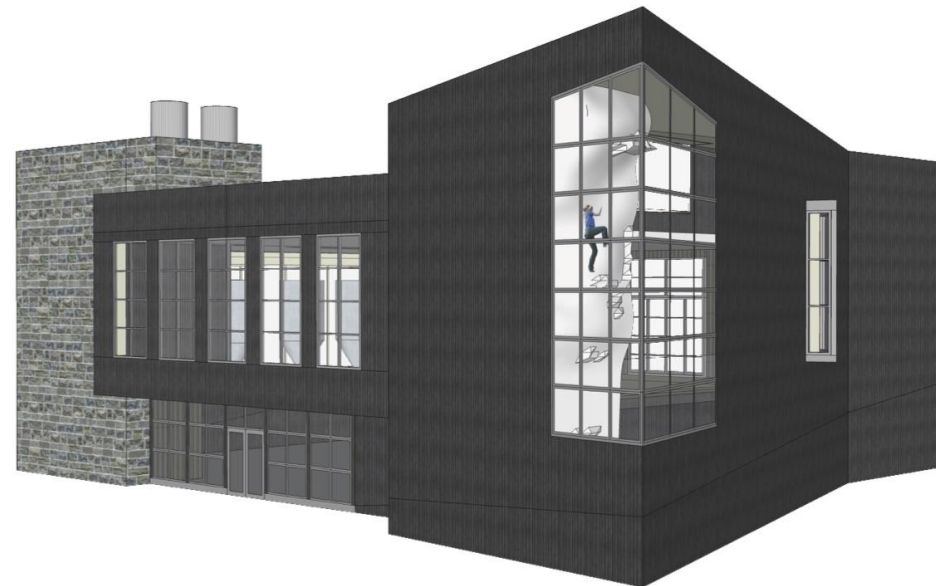
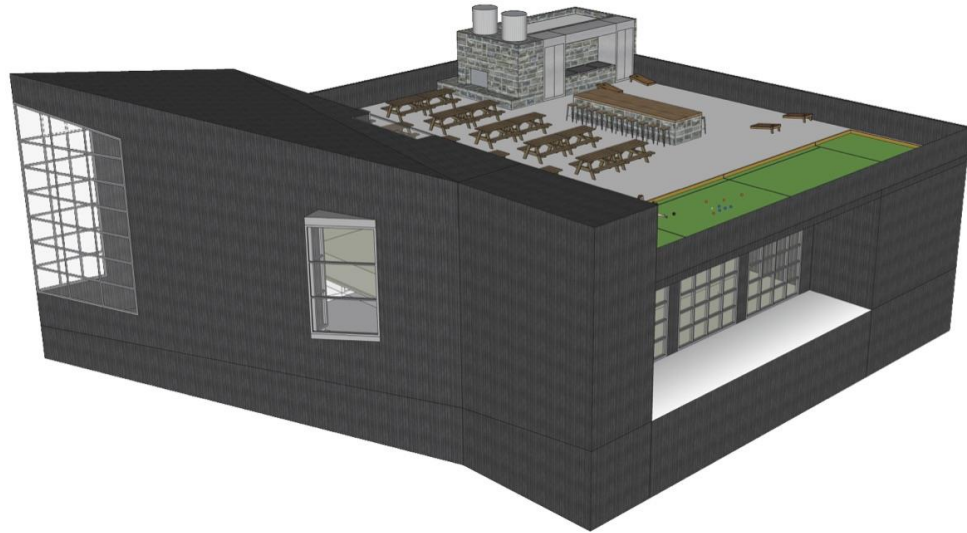
PLAN STUDY @ L.L. LODGE 04.20.2020



scott simons architects

designed for human potential
75 York Street, Portland, ME 04101
207.772.4656 www.SimonsArchitects.com

Moosehead Mountain Resort
22 April 2020



scott simons architects

designed for human potential
75 York Street, Portland, ME 04101
207.772.4656 www.SimonsArchitects.com

Moosehead Mountain Resort
22 April 2020



scott simons architects

designed for human potential
75 York Street, Portland, ME 04101
207.772.4656 www.SimonsArchitects.com

Moosehead Mountain Resort
22 April 2020



scott simons architects

designed for human potential
75 York Street, Portland, ME 04101
207.772.4656 www.SimonsArchitects.com

Moosehead Mountain Resort
22 April 2020



scott simons architects

designed for human potential
75 York Street, Portland, ME 04101
207.772.4656 www.SimonsArchitects.com

Moosehead Mountain Resort
22 April 2020



scott simons architects

designed for human potential
75 York Street, Portland, ME 04101
207.772.4656 www.SimonsArchitects.com

Moosehead Mountain Resort
22 April 2020



scott simons architects

designed for human potential
75 York Street, Portland, ME 04101
207.772.4656 www.SimonsArchitects.com

Moosehead Mountain Resort
22 April 2020