

## CONNECTICUT STATE BOARD OF EDUCATION

### Hartford

**TO:** State Board of Education

**FROM:** Charlene M. Russell-Tucker, Acting Commissioner of Education

**DATE:** May 5, 2021

**SUBJECT:** College Enrollment, Credit Attainment and Remediation of High School Graduates (P20WIN Report)

#### *Executive Summary*

Please find attached the report entitled Trends in Enrollment, Credit Attainment, and Remediation at Connecticut Public Universities and Community Colleges: Results from P20WIN for the High School Graduating Classes of 2010 through 2016. The report answers three questions:

1. Enrollment: What percentage of the graduating class enrolled in a Connecticut public university or community college (UCONN, the four Connecticut State Universities, and 12 Connecticut community colleges) within 16 months of graduation?
2. Credit Attainment: What percentage of those who enrolled in a Connecticut public university or community college within 16 months of graduation earned at least one year's worth of credits (24 or more) within two years of enrollment?
3. Remediation: What percentage of those who enrolled in one of the four Connecticut State Universities or one of the 12 community colleges within 16 months of graduation took a remedial course within two years of enrollment?

The overall results indicate the following:

- Of the approximately 39,000 students in each graduating class, around 40 percent enrolled in a Connecticut public university or community college within 16 months of graduation. There is a slight increase across the graduating classes, from 39.3 percent in 2010 to 42.0 percent in 2016.
- Of those who enroll, around two-thirds earn 24 credits within two years of enrollment. There is a slight increase across the graduating classes from 64.4 percent in 2010 to 65.7 percent in 2016 with a peak of 67.0 percent in 2013.
- Of the approximately 13,500 students from the graduating class of 2016 who enrolled in one of the four Connecticut State Universities or a Connecticut community college within 16 months of graduation, just over 41 percent took a remedial course within the first two years of enrollment; this is down from nearly 50 percent six years earlier.

When disaggregating the data by student groups, some of the following were observed:

- Across all graduating classes, female students were both more likely to enroll in a Connecticut public university or a Connecticut community college within 16 months of graduation than their male student peers and more likely to earn 24 or more credits within two years of enrollment.

Enrollment for male students has remained relatively constant across the seven graduating classes (2010-2016: 39.0%-40.2%), while enrollment for female students has grown over time (2010-2016: 39.6%-43.8%).

- African American and Hispanic students experienced increases across the graduating classes in CPUCC enrollment, while Asian and white enrollment remained nearly constant (2010-2016: Black/African American: 38.4%-47.2%; Hispanic: 41.6%-47.6%; Asian: 49.9%-50.9%; White: 38.5%-38.8%).
- Students reported as African American or Hispanic were less likely to have earned 24 or more credits in two years than their white student peers, with Asian students having the highest credit attainment rates. With the exception of Hispanic students, whose credit attainment has declined since its peak of 55.8% in 2012, all student groups showed increases in credit attainment across the seven classes (2010-2016: Hispanic: 52.8%-52.9%; Asian: 79.8%-84.9%; Black/African American: 49.8%-52.6%; White: 68.3%-71.7%).
- English Learners, students with disabilities, and those from low income families were less likely than their peers to have earned a full year's worth of credit within two years of enrollment across all seven graduating classes. While the credit attainment of English Learners has declined since 2010, the credit attainment of students with disabilities and students from low income families has increased (2010-2016: English Learners: 52.0%-43.2%; Students with Disabilities: 37.0%-38.3%; Students Eligible for Free- or Reduced-Price Meals: 52.1%-52.7%).
- The percentage of students participating in remedial coursework is declining for almost all student groups (2010-2016: Asian: 42.7%-26.9%; Black/African American: 70.1%-56.4%; Hispanic: 67.5%-57.6%; White: 42.0%-31.8%; English Learners: 75.8%-65.6%; Students with Disabilities: 77.7%-68.6%; Students Eligible for Free- or Reduced- Price Meals: 68.2%-56.5%).

The decline in students taking remedial coursework is a promising trend, especially considering the significant policy initiatives that were implemented in the early part of the decade including:

- the adoption of the Common Core State Standards by the State Board of Education in July 2010;
- the passage of [Public Act 12-40](#) which directed public community colleges and state universities to reconfigure how remedial/developmental education is delivered; and
- greater pre-college, dual enrollment opportunities for high school students.

The report is being shared with CSDE staff, district and school leaders, and higher education staff to inform strategies that prepare all students for education after high school.

Prepared by:

\_\_\_\_\_  
Danielle Bousquet, Education Consultant

Prepared by:

\_\_\_\_\_  
Dr. Charles Martie, Education Consultant

Approved by:

\_\_\_\_\_  
Ajit Gopalakrishnan, Chief Performance Officer

# **Trends in Enrollment, Credit Attainment, and Remediation at Connecticut Public Universities and Community Colleges:**

Results from P20WIN for  
the High School Graduating Classes of  
2010 through 2016



**P20•WIN**

Connecticut's Preschool–20 and  
Workforce Information Network

<https://portal.ct.gov/OPM/P20Win/>

## Table of Contents

Executive Summary.....	2
Statewide Trends in Enrollment and Credit Attainment .....	3
Statewide Trends in Remediation.....	4
Appendix A: Graphs .....	5
Graphs 1-2: Enrollment in a CT Public University or Community College .....	6
Graphs 3-4: Credit Attainment in a CT Public University or Community College .....	7
Graphs 5-6: Remediation in a CT State University or Community College .....	8
Appendix B: Results Tables .....	9
Table 1: Statewide Demographics by Graduating Class.....	10
Table 2: Credit Attainment by Student Group at All CT Public Universities and Community Colleges ..	11
Table 3: Remediation by Student Group at CT State University System and Community Colleges .....	12
Table 4: Credit Attainment by District at All CT Public Universities and Community Colleges .....	13
Table 5: Remediation by District at the CT State University System and Community Colleges .....	19
Table 6: Credit Attainment by School at All CT Public Universities and Community Colleges .....	25
Table 7: Remediation by School at CT State University System and Community Colleges .....	32
Table 8: Percent of Graduating Class Enrolled in a Postsecondary Institution within 16 Months of Graduation by College/University Type .....	39
Table 9: Percent of Students Enrolled in a CT Private College/University within 16 Months of Graduation by Student Group.....	39
Appendix C: Methods.....	40
Explanation of Programming Logic for Term/Student-level Records .....	41
Figure 1: Visual Representation of Programming Logic.....	42
Calculation of School/District-level records.....	43
Data Suppression .....	43

# Trends in Enrollment, Credit Attainment, and Remediation at Connecticut Public Universities and Community Colleges:

*Results from P20WIN for the High School Graduating Classes of 2010 to 2016*

## Executive Summary

During the summer of 2014, three Connecticut state agencies – the Connecticut State Department of Education (CSDE), the Board of Regents for Higher Education, and the Department of Labor – successfully completed a pilot project and established the Preschool through 20 and Workforce Information Network (P20WIN). In 2015, the University of Connecticut (UConn) joined the effort, adding significantly to the scope of the data and analysis. P20WIN is an unprecedented interagency network that securely links data to gain new insights that can help improve the policies and procedures that affect individuals and students these agencies serve.

These analyses examine:

- **Enrollment:** What percentage of the graduating class (or subgroup of the graduating class) enrolled in a Connecticut public university or community college (UConn, the four Connecticut State Universities, and all Connecticut community colleges) within 16 months of graduation?
- **Credit Attainment:** What percentage of those who enrolled in a Connecticut public university or community college within 16 months of graduation (or subgroup thereof) earned at least one year's worth of credits (24 or more) within two years of enrollment?
- **Remediation:** What percentage of those who enrolled in either a Connecticut State University or community college within 16 months of graduation (or subgroup thereof) took a remedial course within two years of enrollment?
  - UConn does not collect data on remediation and is thus not included in the remediation analysis. The enrollment percentage of the graduating class without UConn is provided for comparison.

The results contained herein examine the trends in enrollment, credit attainment, and remediation in Connecticut's public universities and community colleges from 2010 to 2016.

The complete results are provided in six graphs (see Appendix A) and nine tables (see Appendix B):

- Graphs 1 and 2: Enrollment at CT Public Universities and Community Colleges
- Graphs 3 and 4: Credit Attainment at CT Public Universities and Community Colleges
- Graphs 5 and 6: Remediation at CT State Universities and Community Colleges
- Table 1: Statewide Demographics by Graduating Class (provided for comparison)
- Table 2: Statewide Credit Attainment Results by Demographic Subgroup
- Table 3: Statewide Remediation Results by Demographic Subgroup
- Table 4: Credit Attainment Results by District
- Table 5: Remediation Results by District
- Table 6: Credit Attainment Results by School
- Table 7: Remediation Results by School
- Table 8: Enrollment by College Type
- Table 9: Enrollment in CT Private Colleges and Universities

## Statewide Trends in Enrollment and Credit Attainment *(See Graphs 1-4 and Table 2)*

Of the approximately 39,000 students in each of the graduating classes, around 40% enrolled in a Connecticut public university or a community college (CPUCC) within 16 months of high school graduation. CPUCC includes UCONN, the four Connecticut State Universities, and the Connecticut community colleges. The overall percentage of students has remained largely consistent across the graduating classes in this analysis; there is a slight increase from 39.3% in 2010 to 42.0% in 2016. Across all graduating classes, female students were not only more likely to enroll in a CPUCC within 16 months of graduation than their male student peers (e.g., Graduating Class 2015: Female: 42.6%; Male: 40.0%), female students were also more likely to earn 24 or more credits within two years of enrollment (e.g., Graduating Class 2015: Female: 69.1%; Male: 63.0%). Enrollment for male students has remained relatively constant across the seven graduating classes (2010-2016: 39.0%-40.2%), while enrollment for female students has grown over time (Graduating Class 2010-2016: 39.6%-43.8%). Credit attainment for both male and female students have had very slight increases (2010-2016: Female: 66.7%-68.1%, with a peak of 70.1% in 2013; Male: 62.0%-63.1%, with a peak of 63.8% in 2012).

While African American, Asian, and Hispanic students were more likely to enroll in CPUCCs than their white student peers (e.g., Graduating Class 2015: Black/African American: 46.7%, Asian: 52.2%, Hispanic: 46.9%, White: 37.9%), African American or Hispanic students were less likely to have earned 24 or more credits in two years than their white or Asian student peers (e.g., Graduating Class 2015: Black/African American: 52.6%, Asian: 82.7%, Hispanic: 53.1%, White: 72.3%). African American and Hispanic students experienced increases across the graduating classes in CPUCC enrollment, while Asian and white student enrollment remained nearly constant, (2010-2016: Black/African American: 38.4%-47.2%; Asian: 49.9%-50.9%, Hispanic: 41.6%-47.6%, White: 38.5%-38.8%). With the exception of Hispanic students, whose credit attainment has declined since its peak of 55.8% in 2012, all groups showed increases in credit attainment across the seven classes (2010-2016: Black/African American: 49.8%-52.6%; Asian: 79.8%-84.9%; Hispanic: 52.8%-52.9%; White: 68.3%-71.7%).

English Learners were slightly less likely to have enrolled in a CPUCC within 16 months of graduation than their peers across the 2010-2014 graduating classes, however significant growth in 2015 and 2016 has actually caused the reverse. (e.g., Graduating Class 2015 EL: 41.8%, Not EL: 41.3%). Across all seven classes, English Learners were less likely than their peers to have earned a full year's worth of credit within two years of enrollment (e.g., Graduating Class 2015: EL: 46.7%, Not EL: 66.8%). The percentage of English Learners enrolling in a CPUCC increased across the seven classes. (2010-2016: 36.3%-42.5%), while the percentage of English Learners earning a year's credit in their first two years decreased across the five classes (2010-2016: 52.0%-43.2%).

Students with disabilities (SWD) were less likely to have enrolled in a CPUCC within 16 months of graduation than their peers across all seven classes (e.g., Graduating Class 2015: SWD: 31.1%, Not SWD: 42.4%). Across all seven classes, students with disabilities were less likely than their peers to have earned a full year's worth of credit within two years of enrollment (e.g., Graduating Class 2015: SWD: 37.0%, Not SWD: 68.4%). The percentage of students with disabilities enrolling in a CPUCC had a slight increase across the classes (2010-2016: 30.3%-31.9%, with a peak of 32.3% in 2013), as did the percentage of students earning a year's credit within the first two years (2010-2016: 37.0%-38.3%, with a peak of 39.0% in 2012).

Students who were eligible for free- or reduced- price meals (FRPM) were more likely to have enrolled in a CPUCC within 16 months of graduation than their peers across the seven classes (e.g., Graduating Class 2015: FRPM: 46.3%, Not FRPM: 39.2%), however they were less likely than their peers to have earned a full year's worth of credit within two years of enrollment (e.g., Graduating Class 2015: FRPM: 54.1%, Not FRPM: 72.2%). The percentage of students eligible for FRPM enrolling in a CPUCC increased across the classes (2010-2016: 39.0%-46.5%), while the percentage of students earning a year's credit has remained relatively flat (2010-2016: 52.1%-52.7%, with a peak of 54.6% in 2012).

### Statewide Trends in Remediation *(See Graphs 5-6 and Table 3)*

Of the approximately 13,500 students from the graduating class of 2016 who enrolled in one of the four Connecticut State Universities or a Connecticut community college (CSCU) within 16 months of graduation, just over 41% took a remedial course within the first two years of enrollment; this is down from nearly 50 percent seven years ago (State Average, 2010: 49.8%, 2015: 40.9%, 2016: 41.4%). Both male and female students showed declines in the percentage of students taking remedial courses across the five classes, and the gap between the percentage of female and male students taking remedial courses has narrowed significantly since 2010, with a gap reversal in 2015 (2010: Female: 51.1%, Male 48.5%; 2015: Female: 40.2%, Male 41.7%; 2016: Female 41.5%, Male 41.3%).

English Learners, students with disabilities, and students eligible for free- or reduced-price meals all had significantly higher percentages of students taking remedial classes (e.g., Graduating Class of 2015: EL: 66.5%, SWD: 70.6%, FRPM: 55.1%) than their peers (e.g., Graduating Class of 2015: Not EL: 40.0%, Not SWD: 38.2%, Not FRPM: 32.7%). All three student groups had fewer students taking remedial courses across the graduating classes (2010-2016: EL: 75.8%-65.6%; SWD: 77.7%-68.6%; FRPM: 68.2%-56.5%).

Students who were reported as African American or Hispanic and enrolled in a CSCU were also more likely to take a remedial course than their white or Asian student peers (e.g., Graduating Class 2015, Black/African American: 54.2%, Asian: 31.5%, Hispanic: 58.7%, White: 31.3%). All four subgroups experienced an overall decline in the percentage of students taking remedial courses (2010-2016: Black/African American: 70.1%-56.4%; Asian: 42.7%-26.9%; Hispanic: 67.5%-57.6%; White: 42.0%-31.8%). While a higher percentage of Asian students in the 2011 graduating classes took remedial courses than their white student peers, the proportion of students in the remaining graduating classes who took remedial courses is comparable, with a slight gap reversal in the 2016 graduating class.

The decline in students taking remedial coursework is a promising trend, especially considering the significant policy initiatives that were implemented in the early part of the decade, including:

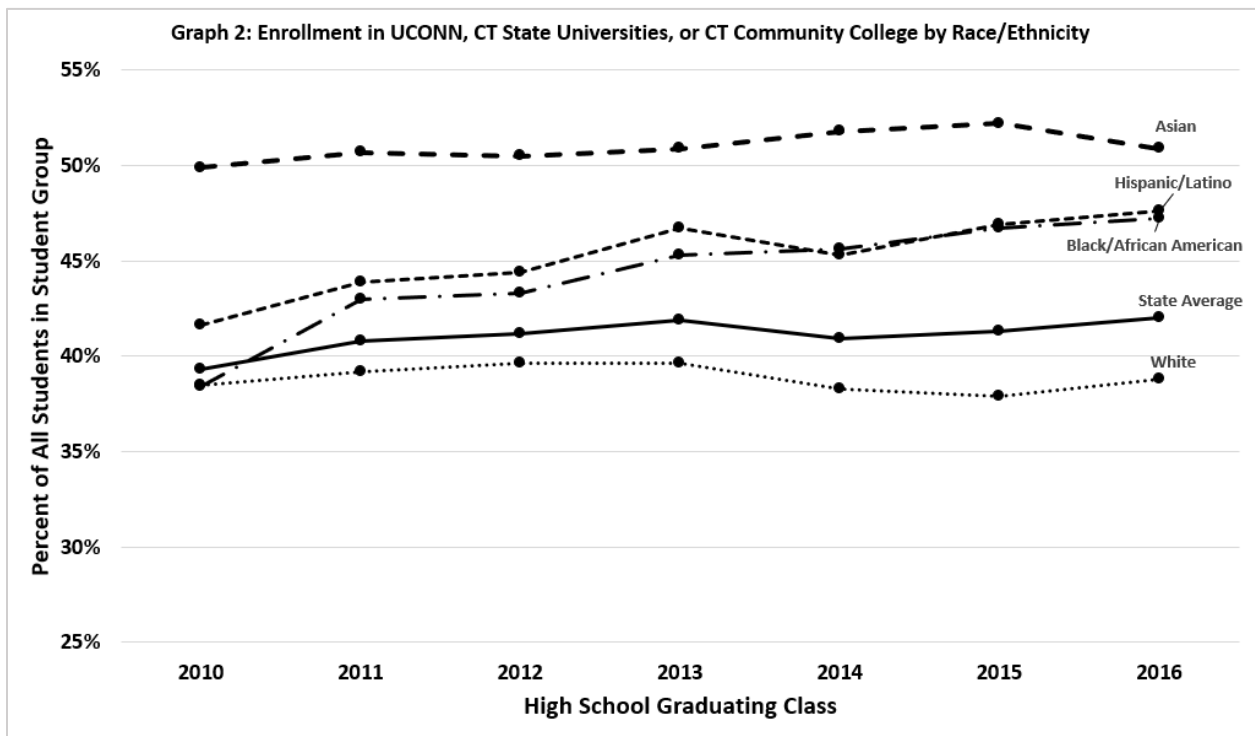
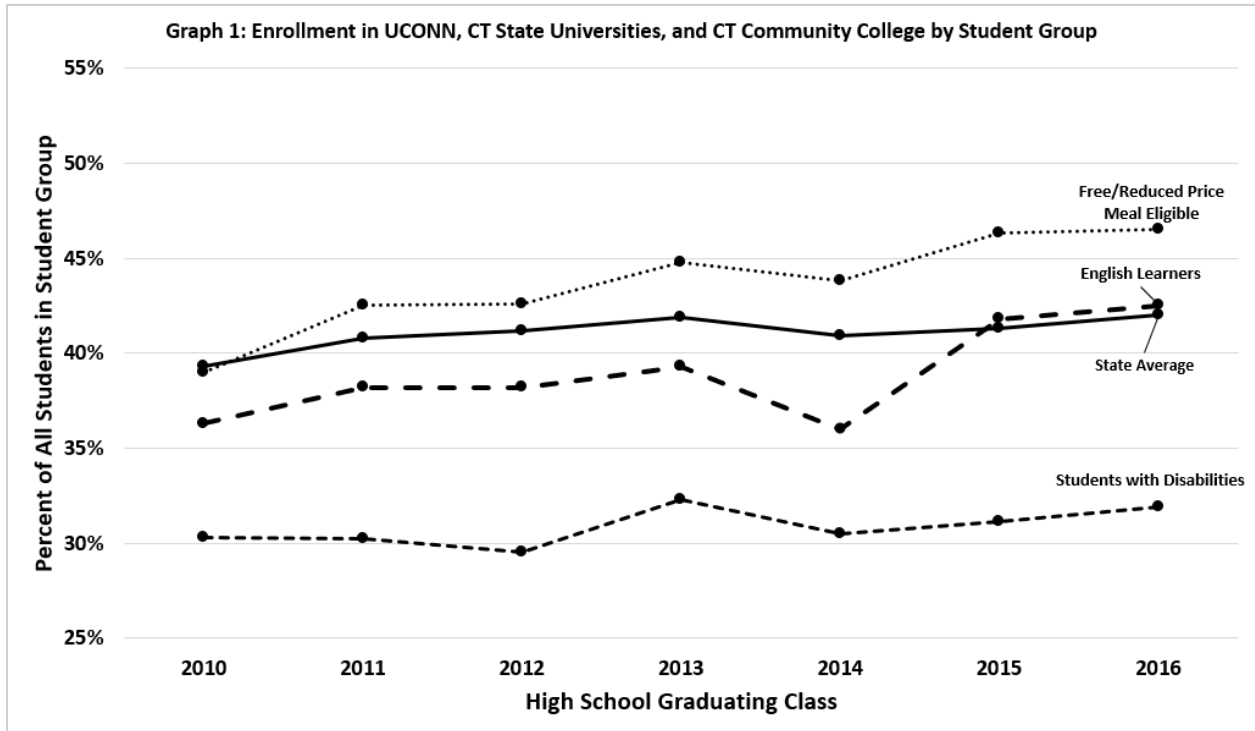
- the adoption of the Common Core State Standards by the State Board of Education in 2010;
- the passage of [Public Act 12-40](#) which directed public community colleges and state universities to reconfigure how remedial/developmental education was delivered; and
- greater pre-college, dual enrollment opportunities for high school students.

District and school data are available in Appendix B: Tables 4-7. To provide a more complete picture of postsecondary pathways taken by public high school graduates, a breakdown of enrollment by college type is included in Table 8, and enrollment in Connecticut's private universities/colleges for the graduating classes of 2013 through 2016 is included in Table 9.

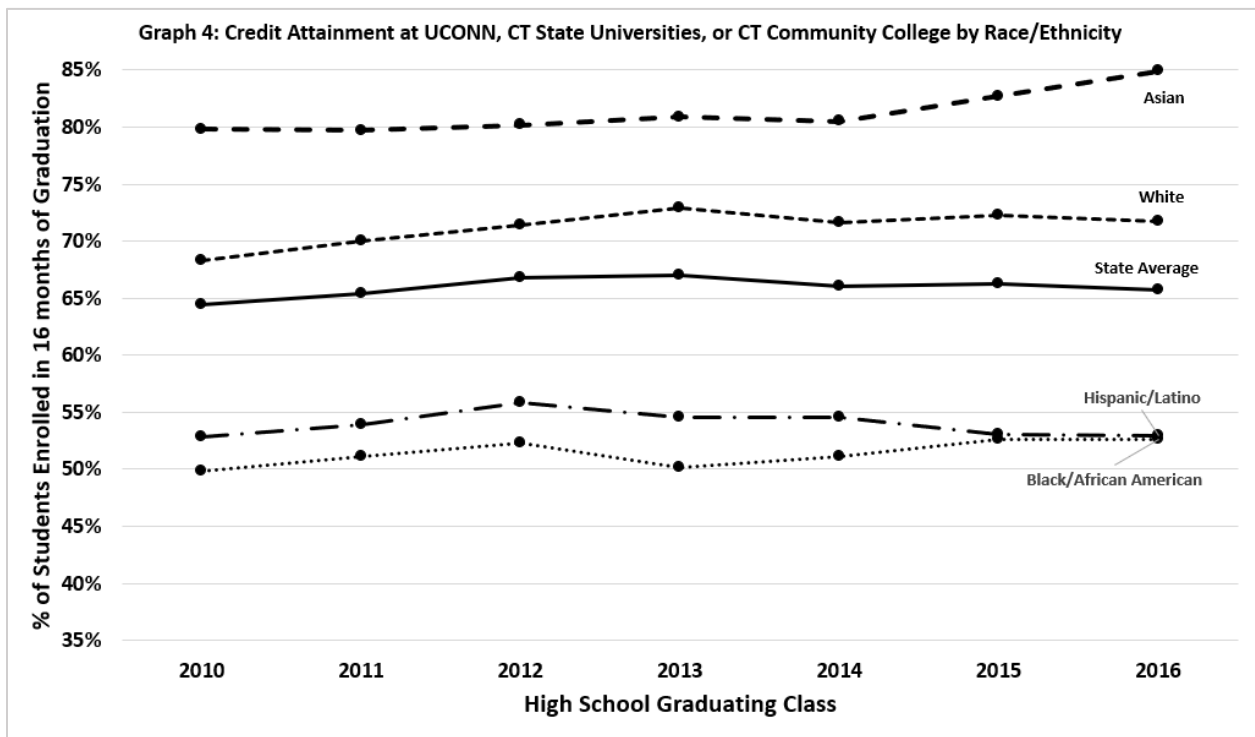
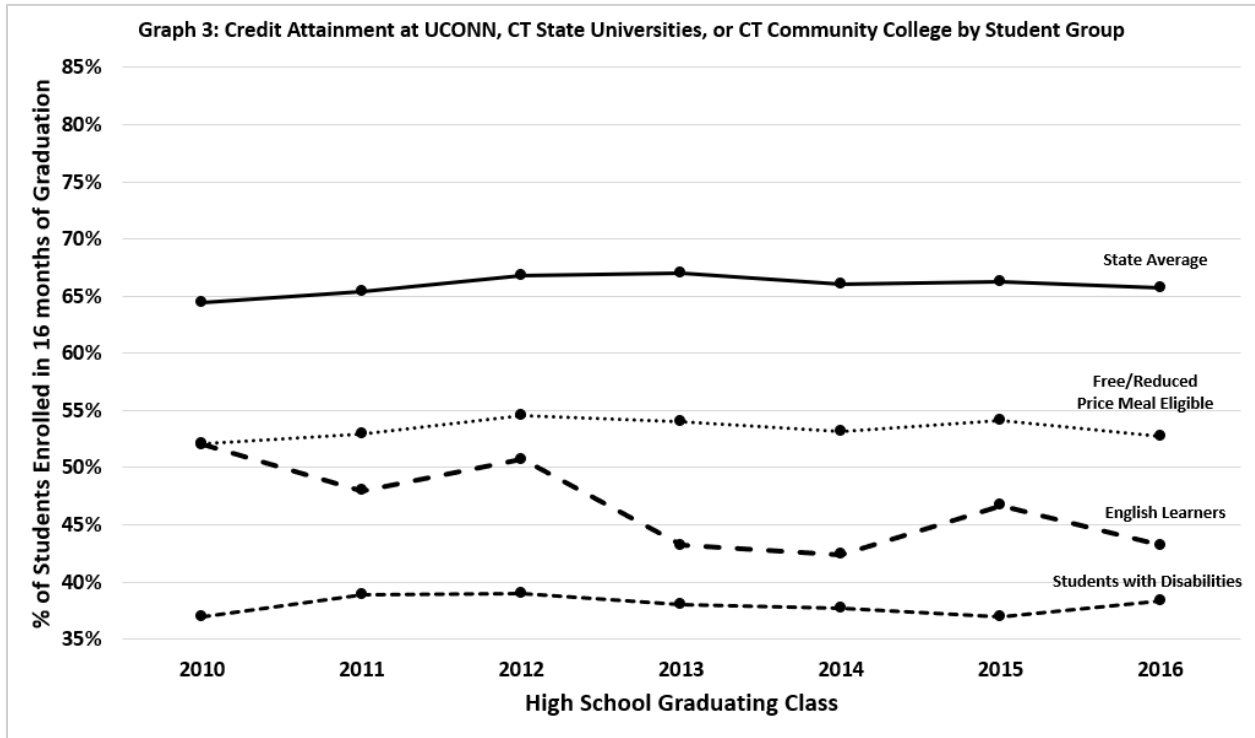
## **Appendix A: Graphs**



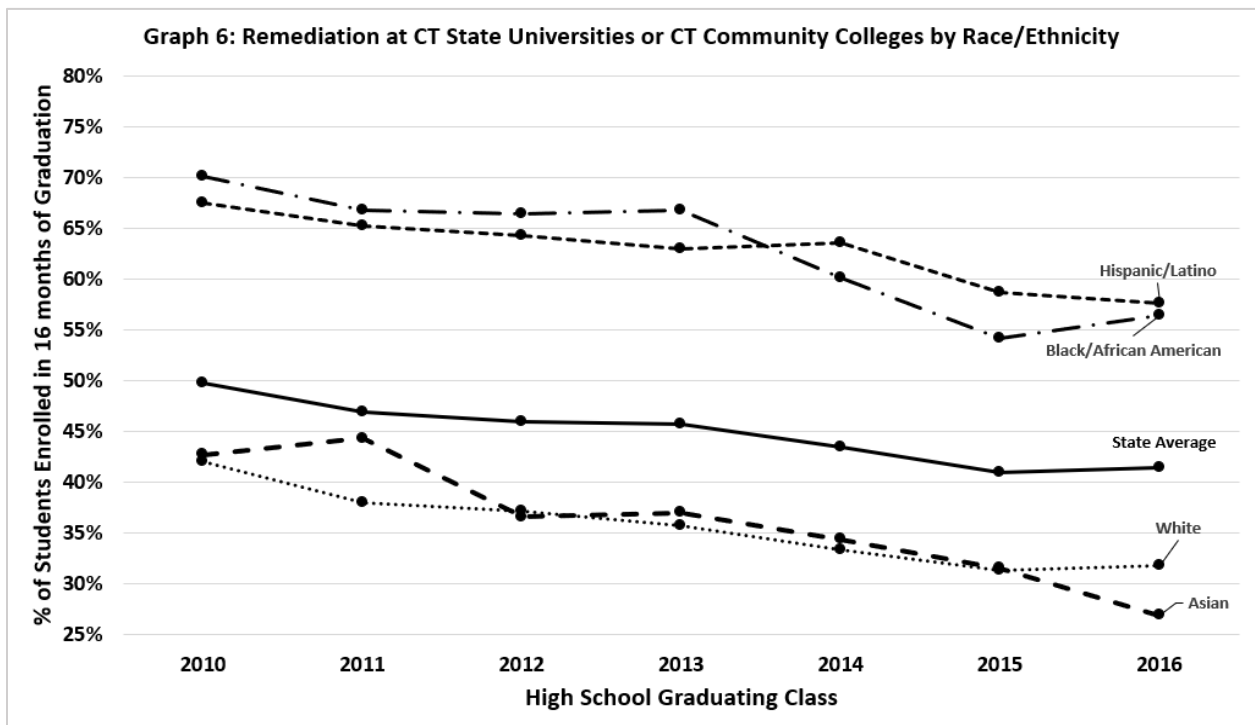
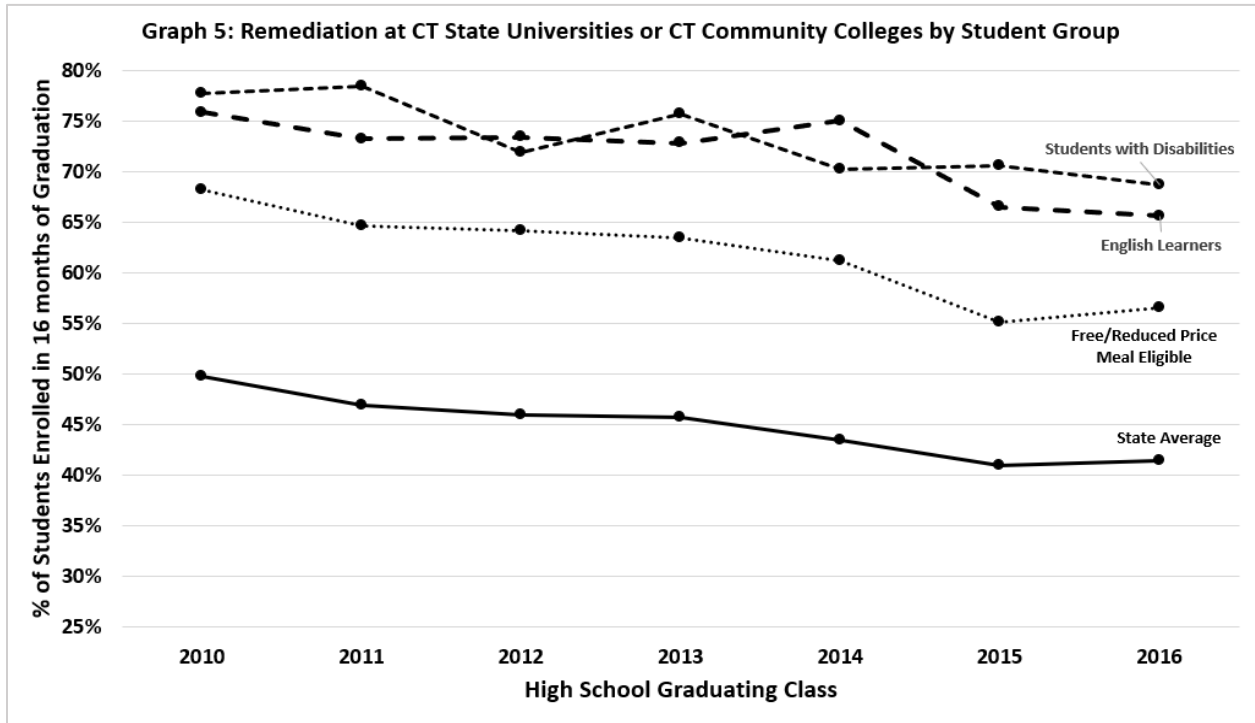
## Graphs 1-2: Enrollment in a CT Public University or Community College



### Graphs 3-4: Credit Attainment in a CT Public University or Community College



## Graphs 5-6: Remediation in a CT State University or Community College



## **Appendix B: Results Tables**

Table 1: Statewide Demographics by Graduating Class

Graduating Class	Enrollment Measure	Female	Male	American Indian or Alaska Native	Asian	Black or African American	Hispanic/Latino of any race	Native Hawaiian or Other Pacific Islander	Two or More Races	White	English Learners	Not English Learners	Students with Disabilities	Not Students with Disabilities	Free/ Reduced Price Meal Eligible	Not Free/ Reduced Price Meal Eligible	Graduating Class Total
2010	All Students	19,419	19,302	122	1,474	4,960	4,932	*	*	27,157	951	37,770	3,326	35,395	10,133	28,588	<b>38,721</b>
2010	% of Cohort	50.2%	49.8%	0.3%	3.8%	12.8%	12.7%	*	*	70.1%	2.5%	97.5%	8.6%	91.4%	26.2%	73.8%	
2011	All Students	19,456	19,433	168	1,397	4,895	5,306	*	*	26,835	936	37,953	3,305	35,584	10,934	27,955	<b>38,889</b>
2011	% of Cohort	50.0%	50.0%	0.4%	3.6%	12.6%	13.6%	*	*	69.0%	2.4%	97.6%	8.5%	91.5%	28.1%	71.9%	
2012	All Students	19,508	19,170	212	1,492	4,703	5,513	24	394	26,340	960	37,718	3,500	35,178	11,238	27,440	<b>38,678</b>
2012	% of Cohort	50.4%	49.6%	0.5%	3.9%	12.2%	14.3%	0.1%	1.0%	68.1%	2.5%	97.5%	9.0%	91.0%	29.1%	70.9%	
2013	All Students	19,340	19,466	143	1,643	4,794	5,859	65	450	25,852	936	37,870	3,430	35,376	10,379	28,427	<b>38,806</b>
2013	% of Cohort	49.8%	50.2%	0.4%	4.2%	12.3%	15.1%	0.2%	1.2%	66.6%	2.4%	97.6%	8.8%	91.2%	26.7%	73.3%	
2014	All Students	19,501	19,579	121	1,653	4,894	6,193	25	556	25,638	1,027	38,053	3,551	35,529	11,011	28,069	<b>39,080</b>
2014	% of Cohort	49.9%	50.1%	0.3%	4.2%	12.5%	15.9%	0.1%	1.4%	65.6%	2.6%	97.4%	9.1%	90.9%	28.2%	71.8%	
2015	All Students	19,085	19,113	114	1,679	4,847	6,460	20	608	24,470	1,189	37,009	3,657	34,541	11,400	26,798	<b>38,198</b>
2015	% of Cohort	50.0%	50.0%	0.3%	4.4%	12.7%	16.9%	0.1%	1.6%	64.1%	3.1%	96.9%	9.6%	90.4%	29.8%	70.2%	
2016	All Students	19,230	19,328	123	1,750	4,759	6,989	29	717	24,191	1,259	37,299	3,813	34,745	11,663	26,895	<b>38,558</b>
2016	% of Cohort	49.9%	50.1%	0.3%	4.5%	12.3%	18.1%	0.1%	1.9%	62.7%	3.3%	96.7%	9.9%	90.1%	30.2%	69.7%	

\* Data suppressed to protect confidentiality.

Source: P20WIN data and SDE calculations

Table 2: Credit Attainment by Student Group at All CT Public Universities and Community Colleges

Graduating Class	Enrollment Measure	Female	Male	American Indian or Alaska Native	Asian	Black or African American	Hispanic/Latino of any race	Native Hawaiian or Other Pacific Islander	Two or More Races	White	English Learners	Not English Learners	Students with Disabilities	Not Students with Disabilities	Free/Reduced Price Meal Eligible	Not Free/Reduced Price Meal Eligible	State Total
2010	% Enrolled in 16 Months	39.6%	39.0%	47.5%	49.9%	38.4%	41.6%	*	*	38.5%	36.3%	39.4%	30.3%	40.2%	39.0%	39.5%	<b>39.3%</b>
2010	% Earning 24 Credits†	66.7%	62.0%	58.6%	79.8%	49.8%	52.8%	*	*	68.3%	52.0%	64.7%	37.0%	66.3%	52.1%	68.4%	<b>64.4%</b>
2011	% Enrolled in 16 Months	42.2%	39.4%	41.1%	50.7%	43.0%	43.9%	*	*	39.2%	38.2%	40.8%	30.2%	41.7%	42.5%	40.2%	<b>40.8%</b>
2011	% Earning 24 Credits†	68.5%	62.1%	63.8%	79.7%	51.1%	53.9%	*	*	70.0%	48.0%	65.8%	38.9%	67.1%	52.9%	70.1%	<b>65.4%</b>
2012	% Enrolled in 16 Months	42.1%	40.2%	44.3%	50.5%	43.3%	44.4%	*	*	39.6%	38.2%	41.2%	29.5%	42.3%	42.6%	40.6%	<b>41.2%</b>
2012	% Earning 24 Credits†	69.6%	63.8%	61.7%	80.2%	52.3%	55.8%	*	*	71.4%	50.7%	67.1%	39.0%	68.6%	54.6%	71.5%	<b>66.8%</b>
2013	% Enrolled in 16 Months	43.6%	40.3%	42.0%	50.9%	45.3%	46.7%	47.7%	41.6%	39.6%	39.3%	42.0%	32.3%	42.9%	44.8%	40.9%	<b>41.9%</b>
2013	% Earning 24 Credits†	70.1%	63.7%	66.7%	80.9%	50.1%	54.5%	74.2%	63.6%	72.9%	43.2%	67.6%	38.0%	69.2%	54.0%	72.2%	<b>67.0%</b>
2014	% Enrolled in 16 Months	42.2%	39.6%	43.0%	51.8%	45.6%	45.3%	*	*	38.3%	36.0%	41.1%	30.5%	42.0%	43.8%	39.8%	<b>40.9%</b>
2014	% Earning 24 Credits†	69.0%	62.7%	48.1%	80.5%	51.1%	54.5%	*	*	71.6%	42.4%	66.5%	37.7%	68.0%	53.2%	71.5%	<b>66.0%</b>
2015	% Enrolled in 16 Months	42.6%	40.0%	47.4%	52.2%	46.7%	46.9%	55.0%	42.8%	37.9%	41.8%	41.3%	31.1%	42.4%	46.3%	39.2%	<b>41.3%</b>
2015	% Earning 24 Credits†	69.1%	63.0%	59.3%	82.7%	52.6%	53.1%	*	62.3%	72.3%	46.7%	66.8%	37.0%	68.4%	54.1%	72.2%	<b>66.2%</b>
2016	% Enrolled in 16 Months	43.8%	40.2%	40.7%	50.9%	47.2%	47.6%	55.2%	39.9%	38.8%	42.5%	42.0%	31.9%	43.1%	46.5%	40.1%	<b>42.0%</b>
2016	% Earning 24 Credits†	68.1%	63.1%	62.0%	84.9%	52.6%	52.9%	*	63.6%	71.7%	43.2%	66.5%	38.3%	68.0%	52.7%	72.3%	<b>65.7%</b>

\* Data suppressed to protect confidentiality.

† This row is a subset of the row immediately above it.

Source: P20WIN data and SDE calculations

Table 3: Remediation by Student Group at CT State University System and Community Colleges

Graduating Class	Enrollment Measure	Female	Male	American Indian or Alaska Native	Asian	Black or African American	Hispanic/Latino of any race	Native Hawaiian or Other Pacific Islander	Two or More Races	White	English Learners	Not English Learners	Students with Disabilities	Not Students with Disabilities	Free/Reduced Price Meal Eligible	Not Free/Reduced Price Meal Eligible	State Total
2010	% Enrolled in 16 Months	33.7%	32.1%	38.5%	32.1%	35.4%	38.3%	*	*	31.5%	34.9%	32.8%	29.8%	33.2%	35.4%	32.1%	<b>32.9%</b>
2010	% Enrolled in Remediation†	51.1%	48.5%	53.2%	42.7%	70.1%	67.5%	*	*	42.0%	75.8%	49.1%	77.7%	47.5%	68.2%	43.2%	<b>49.8%</b>
2011	% Enrolled in 16 Months	35.9%	32.8%	38.1%	31.0%	39.5%	40.5%	*	*	32.4%	37.1%	34.3%	29.8%	34.8%	39.0%	32.8%	<b>34.4%</b>
2011	% Enrolled in Remediation†	48.7%	44.9%	56.3%	44.3%	66.7%	65.2%	*	*	38.0%	73.2%	46.2%	78.4%	44.4%	64.6%	39.3%	<b>46.9%</b>
2012	% Enrolled in 16 Months	35.7%	33.3%	40.1%	32.4%	40.0%	41.0%	*	*	32.3%	36.7%	34.4%	28.9%	35.0%	39.2%	32.7%	<b>34.5%</b>
2012	% Enrolled in Remediation†	46.7%	45.3%	58.8%	36.6%	66.4%	64.3%	*	*	37.1%	73.4%	45.3%	71.9%	43.9%	64.1%	38.0%	<b>46.0%</b>
2013	% Enrolled in 16 Months	37.2%	33.3%	36.4%	32.1%	43.1%	43.4%	40.0%	34.0%	32.2%	38.0%	35.2%	31.9%	35.6%	41.7%	33.0%	<b>35.3%</b>
2013	% Enrolled in Remediation†	47.1%	44.2%	50.0%	37.0%	66.7%	63.0%	42.3%	51.0%	35.7%	72.8%	45.0%	75.7%	43.1%	63.4%	37.5%	<b>45.7%</b>
2014	% Enrolled in 16 Months	36.0%	33.1%	38.8%	31.2%	42.4%	41.5%	*	*	31.6%	35.1%	34.5%	29.9%	35.0%	40.2%	32.3%	<b>34.5%</b>
2014	% Enrolled in Remediation†	43.8%	43.0%	55.3%	34.4%	60.1%	63.6%	*	*	33.3%	75.0%	42.5%	70.2%	41.1%	61.2%	34.7%	<b>43.4%</b>
2015	% Enrolled in 16 Months	36.6%	33.3%	40.4%	32.9%	43.8%	43.7%	45.0%	36.3%	31.0%	40.6%	34.8%	30.7%	35.4%	43.1%	31.6%	<b>35.0%</b>
2015	% Enrolled in Remediation†	40.2%	41.7%	28.3%	31.5%	54.2%	58.7%	*	42.5%	31.3%	66.5%	40.0%	70.6%	38.2%	55.1%	32.7%	<b>40.9%</b>
2016	% Enrolled in 16 Months	36.7%	32.9%	32.5%	29.1%	42.8%	43.3%	44.8%	32.8%	31.3%	41.3%	34.6%	30.9%	35.3%	41.8%	31.8%	<b>34.8%</b>
2016	% Enrolled in Remediation†	41.5%	41.3%	57.5%	26.9%	56.4%	57.6%	*	40.0%	31.8%	65.6%	40.5%	68.6%	38.8%	56.5%	32.9%	<b>41.4%</b>

\* Data suppressed to protect confidentiality.

† This row is a subset of the row immediately above it.

Source: P20WIN data and SDE calculations

Table 4: Credit Attainment by District at All Connecticut Public Universities and Community Colleges

Graduating Class		2010	2010	2011	2011	2012	2012	2013	2013	2014	2014	2015	2015	2016	2016
District ID	District Name	% Enrolled in 16 Months	% Earning 24 Credits†	% Enrolled in 16 Months	% Earning 24 Credits†	% Enrolled in 16 Months	% Earning 24 Credits†	% Enrolled in 16 Months	% Earning 24 Credits†	% Enrolled in 16 Months	% Earning 24 Credits†	% Enrolled in 16 Months	% Earning 24 Credits†	% Enrolled in 16 Months	% Earning 24 Credits†
2850013	Achievement First Bridgeport	*	*	*	*	*	*	*	*	*	*	60.0%	*	60.0%	*
2880013	Achievement First Hartford	*	*	*	*	*	*	*	*	*	*	*	*	61.3%	*
2790013	Amistad Academy District	*	*	*	*	*	*	23.8%	*	28.3%	*	57.7%	*	70.0%	52.4%
0020011	Ansonia School District	41.6%	67.2%	34.3%	69.4%	49.7%	67.8%	46.6%	66.7%	43.6%	58.6%	47.0%	53.5%	52.5%	65.6%
0040011	Avon School District	26.3%	75.0%	30.9%	70.1%	29.6%	81.9%	31.0%	71.3%	30.1%	79.3%	31.3%	82.7%	34.3%	81.7%
0070011	Berlin School District	43.4%	75.5%	49.2%	71.3%	51.2%	75.2%	52.1%	79.1%	53.7%	75.4%	48.0%	74.2%	53.3%	85.2%
0090011	Bethel School District	40.6%	78.6%	42.4%	69.3%	51.7%	79.2%	41.2%	72.3%	42.5%	63.6%	41.3%	73.9%	51.0%	75.0%
0110011	Bloomfield School District	43.0%	57.4%	48.0%	63.9%	44.6%	46.7%	47.3%	51.9%	49.7%	63.3%	50.9%	60.2%	51.7%	56.4%
0120011	Bolton School District	51.5%	76.5%	54.4%	83.8%	57.6%	78.9%	58.8%	83.0%	54.2%	73.1%	52.1%	57.9%	50.0%	85.4%
0140011	Branford School District	33.4%	75.5%	39.4%	60.4%	40.0%	66.3%	37.1%	72.6%	37.7%	70.8%	43.3%	69.0%	40.5%	61.0%
0150011	Bridgeport School District	38.7%	49.3%	41.1%	51.1%	39.4%	51.8%	41.4%	50.5%	38.6%	45.9%	48.9%	46.9%	47.3%	50.9%
0170011	Bristol School District	45.3%	69.6%	48.1%	67.7%	44.0%	74.6%	46.4%	74.5%	42.3%	69.0%	45.5%	66.0%	43.4%	58.1%
0180011	Brookfield School District	38.2%	77.8%	42.6%	77.1%	45.6%	72.2%	34.6%	75.6%	36.6%	74.7%	40.0%	81.1%	34.9%	71.2%
0230011	Canton School District	36.1%	62.5%	33.9%	66.7%	31.9%	64.9%	37.3%	81.8%	38.1%	66.7%	31.8%	70.7%	36.2%	65.8%
2410014	CREC	19.6%	66.7%	20.7%	68.4%	22.2%	69.8%	32.4%	55.4%	35.9%	52.9%	45.8%	55.5%	50.2%	53.1%
0250011	Cheshire School District	35.7%	73.8%	42.6%	69.7%	42.3%	78.4%	37.8%	79.9%	32.7%	80.6%	38.1%	76.0%	37.0%	75.7%
0270011	Clinton School District	41.4%	70.7%	43.3%	59.0%	39.0%	87.0%	46.2%	80.0%	50.8%	73.8%	38.7%	65.5%	43.8%	82.5%
0280011	Colchester School District	53.0%	70.2%	51.5%	71.8%	52.1%	66.9%	52.7%	74.8%	48.6%	70.6%	41.2%	77.5%	50.2%	76.9%
2680013	Common Ground High School	41.4%	*	45.9%	*	56.7%	*	37.1%	*	41.4%	*	52.6%	55.0%	70.0%	42.9%
9000016	CT Tech Ed & Career System	36.1%	53.5%	36.2%	50.1%	38.3%	56.3%	37.2%	58.7%	36.9%	58.7%	36.3%	56.3%	37.2%	54.5%
0320011	Coventry School District	50.9%	73.7%	41.8%	72.1%	52.9%	67.1%	44.6%	67.2%	53.9%	76.8%	47.3%	62.3%	50.8%	73.8%
0330011	Cromwell School District	49.0%	68.6%	51.6%	63.4%	48.9%	70.1%	45.1%	70.0%	50.8%	68.2%	52.0%	78.1%	53.3%	76.4%
0340011	Danbury School District	49.1%	71.2%	52.6%	65.1%	53.1%	68.9%	49.2%	70.7%	47.8%	67.7%	50.0%	69.0%	52.2%	71.5%
0350011	Darien School District	16.1%	52.3%	10.1%	62.5%	11.8%	61.1%	9.5%	75.9%	13.8%	48.9%	10.5%	58.8%	11.1%	59.5%



Graduating Class		2010	2010	2011	2011	2012	2012	2013	2013	2014	2014	2015	2015	2016	2016
District ID	District Name	% Enrolled in 16 Months	% Earning 24 Credits†	% Enrolled in 16 Months	% Earning 24 Credits†	% Enrolled in 16 Months	% Earning 24 Credits†	% Enrolled in 16 Months	% Earning 24 Credits†	% Enrolled in 16 Months	% Earning 24 Credits†	% Enrolled in 16 Months	% Earning 24 Credits†	% Enrolled in 16 Months	% Earning 24 Credits†
0370011	Derby School District	32.6%	50.0%	38.9%	74.3%	44.4%	65.0%	54.7%	74.3%	48.5%	52.1%	43.2%	68.4%	40.2%	42.4%
0400011	East Granby School District	41.3%	*	34.7%	*	40.0%	62.5%	30.9%	76.2%	53.3%	65.6%	38.7%	79.2%	46.5%	66.7%
0410011	East Haddam School District	52.3%	68.4%	41.4%	88.9%	52.2%	79.2%	45.3%	74.4%	48.5%	74.5%	51.0%	68.6%	39.2%	67.7%
0420011	East Hampton School District	44.1%	66.7%	53.4%	68.6%	48.4%	76.3%	57.5%	80.8%	54.6%	83.1%	47.1%	68.4%	40.9%	72.1%
0430011	East Hartford School District	41.5%	56.4%	42.9%	57.3%	44.8%	57.1%	42.9%	51.2%	44.3%	56.6%	47.4%	55.5%	42.6%	50.2%
0440011	East Haven School District	32.2%	66.2%	46.0%	65.6%	55.8%	62.5%	43.9%	67.8%	44.3%	62.2%	42.9%	59.0%	49.7%	62.2%
0450011	East Lyme School District	38.2%	60.9%	44.8%	70.6%	39.5%	66.4%	39.4%	75.2%	43.2%	74.1%	46.2%	73.8%	35.9%	76.7%
0470011	East Windsor School District	51.5%	62.7%	46.3%	83.8%	46.9%	52.6%	28.0%	73.9%	45.5%	60.9%	40.7%	72.7%	33.8%	62.5%
2530014	EASTCONN	*	*	*	*	36.7%	48.3%	39.7%	47.8%	31.7%	50.0%	46.2%	46.7%	32.9%	60.0%
0480011	Ellington School District	57.4%	79.0%	51.5%	71.6%	49.5%	76.1%	56.8%	79.8%	52.6%	70.3%	52.7%	77.6%	51.1%	69.6%
0490011	Enfield School District	49.8%	61.2%	49.1%	67.3%	45.7%	73.3%	44.6%	63.5%	46.1%	63.3%	46.5%	65.1%	45.9%	64.4%
2720013	Explorations District	34.5%	*	*	*	*	*	30.4%	*	*	*	48.1%	*	*	*
0510011	Fairfield School District	25.3%	63.2%	26.4%	67.3%	27.3%	60.3%	29.5%	68.3%	25.4%	68.5%	25.8%	71.9%	28.0%	68.6%
0520011	Farmington School District	42.3%	74.5%	36.4%	66.4%	38.4%	69.4%	47.1%	75.5%	39.0%	70.2%	32.8%	75.9%	40.0%	67.7%
0540011	Glastonbury School District	46.5%	75.8%	43.7%	74.2%	41.7%	77.2%	42.7%	78.9%	34.8%	80.3%	39.0%	76.4%	39.8%	75.9%
0560011	Granby School District	30.2%	70.4%	31.9%	68.3%	35.4%	71.6%	41.8%	75.9%	38.0%	71.1%	37.3%	66.1%	31.0%	70.7%
0570011	Greenwich School District	17.2%	56.9%	21.4%	56.4%	21.0%	67.7%	25.5%	68.4%	20.2%	57.9%	22.8%	62.3%	22.3%	73.0%
0580011	Griswold School District	47.6%	53.1%	52.9%	56.7%	44.6%	72.0%	49.7%	61.0%	49.7%	54.8%	44.5%	72.1%	46.6%	62.9%
0590011	Groton School District	47.1%	63.0%	50.7%	69.9%	44.9%	65.6%	43.7%	64.4%	37.4%	59.6%	46.1%	75.0%	40.4%	55.8%
0600011	Guilford School District	26.4%	63.5%	29.2%	73.3%	30.1%	64.7%	31.6%	73.5%	29.7%	76.3%	31.2%	75.6%	36.1%	78.2%
0620011	Hamden School District	29.9%	54.9%	40.3%	69.0%	47.5%	68.4%	48.5%	63.2%	42.9%	61.3%	42.8%	55.7%	43.2%	57.9%
0640011	Hartford School District	21.3%	60.6%	22.9%	59.8%	23.2%	70.1%	45.5%	49.3%	42.9%	52.3%	44.0%	53.3%	48.1%	50.8%
0690011	Killingly School District	6.1%	*	9.7%	*	14.8%	87.0%	44.3%	70.1%	41.9%	65.3%	38.9%	68.3%	46.2%	68.8%
2450014	Learn	*	*	*	*	*	*	*	*	41.7%	65.0%	41.4%	59.7%	56.8%	65.7%
0710011	Lebanon School District	44.6%	74.1%	47.6%	68.6%	49.6%	63.8%	49.1%	57.4%	50.0%	82.6%	51.1%	78.3%	45.5%	77.8%

Graduating Class		2010	2010	2011	2011	2012	2012	2013	2013	2014	2014	2015	2015	2016	2016
District ID	District Name	% Enrolled in 16 Months	% Earning 24 Credits†	% Enrolled in 16 Months	% Earning 24 Credits†	% Enrolled in 16 Months	% Earning 24 Credits†	% Enrolled in 16 Months	% Earning 24 Credits†	% Enrolled in 16 Months	% Earning 24 Credits†	% Enrolled in 16 Months	% Earning 24 Credits†	% Enrolled in 16 Months	% Earning 24 Credits†
0720011	Ledyard School District	45.8%	50.9%	42.9%	58.2%	49.7%	68.8%	48.6%	70.9%	45.3%	66.7%	47.1%	64.4%	46.5%	72.7%
0740011	Litchfield School District	32.1%	64.7%	27.6%	66.7%	37.3%	76.3%	42.5%	70.3%	37.5%	83.3%	32.4%	73.9%	39.8%	75.8%
0760011	Madison School District	25.9%	73.0%	18.9%	70.7%	26.1%	70.6%	27.0%	70.9%	30.6%	70.8%	31.5%	76.8%	24.6%	79.5%
0770011	Manchester School District	52.7%	65.7%	52.2%	68.0%	49.5%	61.5%	51.7%	62.0%	44.0%	58.0%	47.0%	58.2%	51.7%	52.4%
0800011	Meriden School District	41.4%	55.9%	42.8%	54.2%	44.8%	59.7%	44.9%	58.9%	40.8%	58.9%	42.0%	47.3%	40.5%	60.2%
0830011	Middletown School District	46.0%	61.2%	50.2%	69.6%	40.5%	63.2%	42.3%	67.4%	48.7%	69.2%	46.8%	67.4%	43.4%	64.9%
0840011	Milford School District	43.5%	71.1%	42.0%	72.7%	39.7%	60.3%	46.7%	68.6%	42.8%	76.7%	46.0%	75.1%	45.2%	67.9%
0850011	Monroe School District	38.0%	67.3%	43.2%	82.1%	37.3%	73.8%	40.0%	72.1%	41.2%	73.6%	40.6%	78.6%	40.1%	77.0%
0860011	Montville School District	52.9%	56.4%	52.0%	66.3%	45.8%	62.0%	46.3%	71.1%	40.4%	69.4%	49.4%	72.4%	54.2%	68.1%
0880011	Naugatuck School District	45.3%	61.6%	52.1%	65.6%	56.3%	73.7%	53.7%	62.3%	49.1%	68.3%	51.2%	58.6%	50.9%	68.1%
0890011	New Britain School District	48.2%	57.6%	52.0%	51.5%	52.3%	57.7%	44.8%	50.0%	52.0%	59.7%	46.7%	48.1%	42.5%	51.6%
0900011	New Canaan School District	13.1%	65.8%	13.4%	53.7%	13.3%	53.5%	11.5%	61.5%	13.5%	42.9%	9.4%	65.5%	11.5%	56.3%
0910011	New Fairfield School District	39.7%	64.7%	39.9%	73.6%	39.9%	82.8%	41.9%	78.8%	45.7%	78.5%	45.0%	82.2%	38.4%	79.1%
0930011	New Haven School District	34.1%	39.5%	41.5%	46.7%	45.2%	51.1%	46.3%	49.6%	46.8%	53.7%	46.7%	55.9%	47.6%	53.3%
0950011	New London School District	37.9%	32.8%	46.6%	38.6%	53.6%	42.7%	45.3%	50.0%	45.0%	45.7%	40.4%	50.7%	42.9%	50.6%
0960011	New Milford School District	45.1%	77.5%	39.3%	80.9%	50.1%	78.8%	46.9%	77.2%	42.2%	77.2%	46.3%	73.5%	38.1%	87.4%
0940011	Newington School District	55.6%	70.1%	57.7%	76.3%	54.8%	77.4%	55.3%	72.4%	58.0%	73.8%	48.9%	75.4%	50.5%	74.2%
0970011	Newtown School District	32.4%	67.4%	33.7%	69.2%	30.4%	73.6%	36.4%	74.4%	30.0%	76.8%	32.6%	76.2%	31.8%	74.4%
0990011	North Branford School District	45.6%	64.2%	44.4%	63.9%	42.4%	76.6%	54.3%	77.5%	41.8%	76.3%	54.4%	75.6%	54.1%	75.3%
1010011	North Haven School District	42.2%	64.8%	53.0%	72.0%	46.7%	78.6%	42.5%	65.5%	40.3%	66.1%	44.1%	65.8%	37.5%	77.1%
1020011	North Stonington School District	40.4%	*	42.6%	69.2%	33.3%	*	38.3%	*	42.9%	75.0%	37.0%	*	35.7%	*
1030011	Norwalk School District	47.7%	57.7%	50.1%	57.7%	49.5%	56.3%	51.4%	64.3%	50.7%	59.3%	47.2%	61.0%	52.6%	62.4%
9010022	Norwich Free Academy District	50.8%	65.1%	49.8%	55.4%	49.0%	62.3%	50.1%	65.7%	44.1%	62.3%	54.5%	61.4%	51.2%	58.2%
1060011	Old Saybrook School District	37.0%	70.5%	39.8%	84.4%	28.3%	79.5%	47.4%	73.0%	28.9%	64.9%	28.3%	76.5%	37.4%	87.0%
1080011	Oxford School District	32.1%	63.9%	50.3%	74.7%	50.7%	68.6%	52.0%	74.4%	53.6%	65.6%	39.5%	84.4%	43.7%	78.0%

Graduating Class		2010	2010	2011	2011	2012	2012	2013	2013	2014	2014	2015	2015	2016	2016
District ID	District Name	% Enrolled in 16 Months	% Earning 24 Credits†	% Enrolled in 16 Months	% Earning 24 Credits†	% Enrolled in 16 Months	% Earning 24 Credits†	% Enrolled in 16 Months	% Earning 24 Credits†	% Enrolled in 16 Months	% Earning 24 Credits†	% Enrolled in 16 Months	% Earning 24 Credits†	% Enrolled in 16 Months	% Earning 24 Credits†
1090011	Plainfield School District	49.5%	56.1%	44.5%	69.9%	45.9%	55.3%	36.3%	61.5%	52.0%	51.9%	47.2%	70.6%	41.1%	72.5%
1100011	Plainville School District	54.7%	59.5%	52.6%	61.8%	52.3%	65.7%	61.5%	73.9%	53.1%	75.3%	60.9%	63.3%	51.9%	68.8%
1110011	Plymouth School District	42.7%	56.6%	46.2%	63.3%	45.2%	63.2%	51.3%	67.8%	50.4%	71.9%	52.3%	63.2%	50.0%	65.3%
1130011	Portland School District	46.6%	70.7%	45.7%	75.7%	45.9%	79.5%	51.2%	71.4%	45.6%	70.2%	49.4%	65.1%	43.7%	73.7%
1160011	Putnam School District	51.9%	46.3%	35.4%	47.8%	37.1%	56.5%	38.8%	58.1%	20.6%	*	36.9%	70.8%	47.1%	69.7%
2010012	Regional School District 01	41.0%	56.1%	19.7%	70.8%	24.8%	66.7%	29.4%	73.3%	26.9%	72.4%	24.1%	66.7%	30.7%	80.6%
2040012	Regional School District 04	30.2%	71.4%	25.3%	76.3%	29.3%	77.3%	44.2%	65.2%	36.4%	77.1%	27.7%	71.4%	32.0%	77.6%
2050012	Regional School District 05	28.8%	73.7%	33.6%	76.7%	37.7%	78.0%	36.1%	73.9%	37.6%	83.0%	37.4%	77.5%	38.2%	76.9%
2060012	Regional School District 06	30.8%	79.2%	51.6%	74.5%	38.1%	71.9%	37.0%	79.4%	46.5%	62.5%	36.5%	61.3%	38.0%	68.4%
2070012	Regional School District 07	43.2%	68.3%	47.2%	68.8%	41.9%	66.3%	40.5%	65.3%	46.7%	73.9%	41.5%	83.1%	43.4%	73.2%
2080012	Regional School District 08	51.4%	74.5%	51.5%	80.5%	50.9%	81.7%	40.0%	82.7%	41.1%	84.5%	48.4%	78.4%	43.2%	82.4%
2090012	Regional School District 09	21.3%	77.6%	24.1%	72.5%	26.9%	76.2%	19.6%	79.5%	25.7%	76.2%	21.7%	85.5%	23.6%	69.0%
2100012	Regional School District 10	42.1%	68.3%	47.4%	72.0%	48.0%	73.8%	40.4%	81.6%	42.7%	76.9%	40.8%	72.0%	40.7%	71.4%
2110012	Regional School District 11	57.1%	75.0%	50.0%	*	47.6%	*	63.9%	56.5%	64.7%	90.9%	50.9%	63.0%	61.5%	*
2120012	Regional School District 12	34.7%	57.7%	29.6%	75.0%	31.3%	65.0%	0.0%	N/A	36.7%	62.1%	37.7%	73.1%	37.7%	65.5%
2130012	Regional School District 13	48.3%	80.0%	43.1%	66.1%	44.6%	83.9%	43.4%	64.5%	42.6%	72.7%	38.4%	84.5%	42.6%	65.0%
2140012	Regional School District 14	32.5%	75.4%	42.9%	74.4%	33.5%	68.8%	42.6%	75.6%	33.7%	68.6%	40.0%	63.5%	37.0%	65.7%
2150012	Regional School District 15	45.6%	71.8%	38.4%	71.6%	39.2%	73.6%	43.5%	77.6%	34.1%	60.7%	38.4%	77.1%	37.3%	71.2%
2160012	Regional School District 16	48.7%	66.7%	56.2%	63.0%	48.6%	71.1%	53.1%	79.8%	50.6%	73.9%	45.8%	74.0%	45.1%	74.4%
2170012	Regional School District 17	50.0%	64.9%	41.4%	77.1%	40.0%	70.8%	38.6%	70.5%	42.7%	75.0%	41.9%	65.7%	41.0%	87.7%
2180012	Regional School District 18	24.5%	79.2%	27.5%	58.3%	35.6%	72.2%	30.6%	87.9%	33.0%	85.7%	29.8%	80.0%	25.3%	88.0%
2190012	Regional School District 19	49.6%	73.9%	47.4%	79.7%	52.9%	76.6%	48.4%	77.0%	46.9%	75.4%	46.6%	79.4%	46.9%	82.2%
1180011	Ridgefield School District	21.7%	76.3%	20.0%	78.8%	20.5%	74.2%	22.0%	76.4%	18.5%	70.2%	18.3%	74.7%	18.4%	71.8%
1190011	Rocky Hill School District	52.1%	60.4%	57.8%	74.0%	56.4%	82.7%	54.5%	77.8%	49.7%	83.0%	57.5%	78.5%	53.5%	76.1%
1240011	Seymour School District	43.2%	73.8%	53.1%	70.6%	55.7%	75.6%	58.0%	71.4%	52.8%	72.7%	50.4%	67.6%	50.3%	75.6%

Graduating Class		2010	2010	2011	2011	2012	2012	2013	2013	2014	2014	2015	2015	2016	2016
District ID	District Name	% Enrolled in 16 Months	% Earning 24 Credits†	% Enrolled in 16 Months	% Earning 24 Credits†	% Enrolled in 16 Months	% Earning 24 Credits†	% Enrolled in 16 Months	% Earning 24 Credits†	% Enrolled in 16 Months	% Earning 24 Credits†	% Enrolled in 16 Months	% Earning 24 Credits†	% Enrolled in 16 Months	% Earning 24 Credits†
1260011	Shelton School District	36.8%	70.3%	39.5%	71.3%	43.5%	75.8%	50.1%	72.4%	44.1%	75.3%	47.4%	80.9%	51.1%	79.2%
1280011	Simsbury School District	29.5%	70.3%	26.4%	62.6%	30.6%	77.7%	30.6%	74.4%	28.2%	75.7%	28.5%	76.9%	33.1%	75.0%
1290011	Somers School District	41.7%	69.1%	44.2%	73.8%	35.0%	77.1%	47.9%	79.7%	43.4%	80.4%	31.4%	68.4%	40.5%	80.9%
1320011	South Windsor School District	56.0%	74.2%	53.3%	71.1%	51.1%	72.3%	45.9%	74.9%	50.6%	81.5%	45.9%	79.1%	46.3%	77.1%
1310011	Southington School District	49.3%	66.2%	52.9%	69.9%	50.3%	74.3%	46.4%	74.4%	49.5%	74.4%	50.5%	75.1%	49.6%	76.6%
1340011	Stafford School District	54.6%	71.7%	52.2%	71.2%	34.5%	79.6%	44.0%	72.5%	48.9%	73.1%	42.4%	75.0%	43.4%	69.6%
2820013	Stamford Academy District	*	*	*	*	30.0%	*	*	*	24.0%	*	21.4%	*	42.9%	*
1350011	Stamford School District	46.0%	60.6%	49.1%	57.2%	49.3%	60.0%	50.3%	66.0%	48.4%	58.4%	47.8%	65.2%	50.9%	62.7%
1370011	Stonington School District	36.8%	67.6%	35.7%	68.6%	25.0%	60.5%	34.7%	63.6%	27.2%	89.1%	32.4%	79.3%	28.7%	67.3%
1380011	Stratford School District	41.6%	65.9%	50.9%	69.3%	48.0%	64.9%	48.6%	66.8%	50.4%	66.9%	50.2%	72.4%	51.3%	70.8%
1390011	Suffield School District	38.9%	67.1%	38.5%	73.4%	35.1%	70.1%	37.7%	66.7%	37.5%	78.2%	38.2%	60.3%	39.2%	66.7%
2690013	The Bridge Academy District	38.7%	*	44.8%	*	38.9%	*	60.6%	40.0%	71.9%	69.6%	86.7%	46.2%	68.8%	40.9%
9020022	The Gilbert School District	56.1%	43.3%	49.2%	75.9%	42.9%	66.7%	58.6%	61.0%	46.8%	47.2%	35.3%	56.7%	33.7%	66.7%
9030022	The Woodstock Academy District	50.9%	65.0%	45.7%	69.0%	49.5%	68.4%	43.9%	75.6%	44.9%	79.8%	40.4%	73.9%	47.7%	71.1%
1400011	Thomaston School District	47.4%	75.6%	53.1%	69.2%	51.8%	55.8%	48.6%	75.0%	57.1%	75.0%	45.0%	85.2%	45.1%	65.2%
1410011	Thompson School District	38.5%	60.0%	31.4%	66.7%	46.7%	78.6%	33.7%	71.4%	36.3%	65.5%	48.4%	76.7%	31.0%	63.6%
1420011	Tolland School District	45.6%	78.8%	50.0%	71.8%	50.2%	74.3%	49.6%	83.6%	51.9%	73.2%	44.3%	80.0%	55.4%	74.6%
1430011	Torrington School District	42.6%	67.2%	43.6%	72.8%	40.7%	64.4%	43.8%	71.8%	42.5%	64.6%	44.7%	61.9%	41.2%	63.3%
1440011	Trumbull School District	39.3%	75.5%	40.0%	66.8%	34.2%	78.0%	44.8%	76.6%	43.1%	74.6%	38.6%	78.3%	42.1%	82.3%
1460011	Vernon School District	47.7%	68.9%	46.0%	65.8%	52.2%	70.2%	51.0%	65.4%	44.7%	73.5%	45.1%	78.1%	50.0%	73.8%
1480011	Wallingford School District	36.9%	58.5%	47.0%	71.1%	50.8%	73.8%	43.5%	70.8%	42.5%	69.7%	45.1%	77.6%	49.8%	73.7%
1510011	Waterbury School District	43.8%	55.7%	50.8%	60.1%	48.8%	55.1%	46.1%	51.8%	48.9%	47.2%	44.2%	49.4%	49.5%	48.1%
1520011	Waterford School District	49.8%	71.0%	49.0%	65.0%	44.6%	66.7%	38.1%	64.0%	53.7%	80.4%	49.3%	74.3%	48.6%	71.3%
1530011	Watertown School District	52.8%	64.0%	48.5%	73.2%	52.5%	72.2%	49.8%	70.2%	49.8%	72.5%	55.9%	67.9%	52.2%	70.3%
1550011	West Hartford School District	38.6%	72.2%	40.9%	74.4%	41.5%	72.2%	39.2%	76.9%	40.8%	68.5%	41.5%	68.9%	41.2%	75.5%

Graduating Class		2010	2010	2011	2011	2012	2012	2013	2013	2014	2014	2015	2015	2016	2016
District ID	District Name	% Enrolled in 16 Months	% Earning 24 Credits †	% Enrolled in 16 Months	% Earning 24 Credits †	% Enrolled in 16 Months	% Earning 24 Credits †	% Enrolled in 16 Months	% Earning 24 Credits †	% Enrolled in 16 Months	% Earning 24 Credits †	% Enrolled in 16 Months	% Earning 24 Credits †	% Enrolled in 16 Months	% Earning 24 Credits †
1560011	West Haven School District	44.4%	60.9%	40.4%	57.5%	50.2%	59.1%	45.8%	66.4%	41.9%	64.2%	48.8%	60.9%	45.8%	53.8%
1540011	Westbrook School District	40.5%	76.7%	47.2%	76.5%	45.3%	70.6%	33.3%	69.2%	42.3%	60.0%	40.0%	76.7%	29.5%	*
1570011	Weston School District	15.0%	61.3%	15.1%	82.8%	15.4%	51.7%	17.2%	62.9%	13.6%	58.3%	14.1%	69.6%	12.6%	61.5%
1580011	Westport School District	11.1%	56.8%	12.8%	55.9%	16.4%	52.2%	15.4%	59.2%	12.6%	58.9%	13.6%	61.3%	13.7%	67.7%
1590011	Wethersfield School District	46.6%	77.1%	44.3%	71.9%	51.9%	75.7%	55.7%	67.9%	51.7%	72.7%	53.4%	76.9%	48.3%	71.2%
1610011	Wilton School District	23.6%	64.4%	19.8%	63.3%	18.3%	70.2%	22.2%	75.7%	16.4%	72.9%	17.7%	61.4%	17.5%	67.2%
1630011	Windham School District	53.9%	56.8%	47.5%	62.4%	51.7%	57.7%	53.1%	58.5%	41.3%	43.9%	53.6%	53.3%	45.5%	48.2%
1650011	Windsor Locks School District	46.3%	71.0%	38.1%	73.3%	40.0%	51.9%	40.9%	70.4%	40.2%	58.8%	37.4%	67.4%	39.4%	67.3%
1640011	Windsor School District	47.8%	63.0%	49.2%	62.7%	49.5%	54.2%	48.4%	63.3%	48.5%	58.7%	44.8%	53.1%	50.4%	58.4%
1660011	Wolcott School District	59.1%	75.8%	51.9%	73.2%	59.2%	74.4%	55.5%	74.4%	58.4%	73.4%	52.0%	70.3%	55.5%	81.0%

\* Data suppressed to protect confidentiality

† This row is a subset of the column immediately preceding it.

Source: P20WIN data and SDE calculations

Table 5: Remediation by District at the Connecticut State University System and Community Colleges

Graduating Class		2010	2010	2011	2011	2012	2012	2013	2013	2014	2014	2015	2015	2016	2016
District ID	District Name	% Enrolled in 16 Months	% Enrolled in Remediation †	% Enrolled in 16 Months	% Enrolled in Remediation †	% Enrolled in 16 Months	% Enrolled in Remediation †	% Enrolled in 16 Months	% Enrolled in Remediation †	% Enrolled in 16 Months	% Enrolled in Remediation †	% Enrolled in 16 Months	% Enrolled in Remediation †	% Enrolled in 16 Months	% Enrolled in Remediation †
2850013	Achievement First Bridgeport Dist	*	*	*	*	*	*	*	*	*	*	53.3%	*	44.0%	*
2880013	Achievement First Hartford Dist	*	*	*	*	*	*	*	*	*	*	*	*	45.2%	*
2790013	Amistad Academy District	*	*	*	*	*	*	23.8%	*	26.1%	*	50.0%	*	66.7%	30.0%
0020011	Ansonia School District	36.6%	69.5%	31.5%	62.2%	45.1%	49.4%	42.0%	58.9%	38.3%	66.7%	45.0%	50.0%	44.3%	53.7%
0040011	Avon School District	16.4%	28.9%	20.1%	28.0%	20.4%	31.6%	22.1%	28.1%	17.3%	21.3%	19.6%	21.3%	22.2%	17.0%
0070011	Berlin School District	33.6%	40.5%	41.9%	36.5%	41.3%	35.6%	42.4%	40.4%	45.8%	30.8%	37.1%	29.3%	45.4%	25.7%
0090011	Bethel School District	37.4%	32.6%	36.1%	20.9%	41.8%	24.7%	33.3%	26.3%	34.3%	32.5%	36.2%	26.0%	46.5%	24.8%
0110011	Bloomfield School District	40.5%	65.6%	42.0%	66.7%	41.1%	63.8%	44.9%	68.0%	45.9%	53.4%	44.2%	34.7%	43.7%	50.0%
0120011	Bolton School District	40.9%	44.4%	45.6%	25.8%	39.4%	34.6%	47.5%	31.6%	44.8%	18.6%	45.2%	21.2%	34.1%	21.4%
0140011	Branford School District	27.4%	46.0%	32.0%	59.3%	34.7%	52.9%	28.5%	45.2%	31.0%	43.7%	35.1%	45.7%	34.0%	34.5%
0150011	Bridgeport School District	34.9%	79.3%	37.0%	70.0%	36.2%	72.7%	39.6%	73.1%	36.4%	71.3%	46.3%	68.9%	43.7%	62.4%
0170011	Bristol School District	40.5%	45.1%	41.8%	51.0%	38.9%	47.4%	42.7%	43.3%	37.0%	39.5%	41.3%	42.3%	37.9%	52.0%
0180011	Brookfield School District	30.1%	41.0%	32.4%	24.1%	36.1%	19.8%	28.3%	14.9%	30.8%	17.1%	31.1%	20.0%	29.2%	14.8%
0230011	Canton School District	29.3%	28.2%	27.8%	34.4%	25.9%	20.0%	23.7%	46.4%	30.6%	34.1%	29.5%	31.6%	27.6%	27.6%
2410014	CREC	15.8%	48.3%	15.9%	43.2%	16.2%	47.8%	28.5%	52.8%	30.5%	57.3%	40.8%	46.2%	42.6%	49.2%
0250011	Cheshire School District	23.5%	36.6%	32.4%	35.6%	30.2%	32.8%	27.2%	27.0%	23.0%	24.1%	27.2%	17.8%	26.7%	25.7%
0270011	Clinton School District	34.3%	39.6%	37.6%	35.8%	30.5%	30.6%	44.6%	39.7%	44.5%	31.6%	36.6%	36.5%	36.9%	39.6%
0280011	Colchester School District	46.6%	28.4%	43.6%	40.0%	43.7%	30.8%	43.2%	36.5%	42.9%	35.2%	33.3%	20.8%	43.0%	36.0%
2680013	Common Ground High School	41.4%	*	43.2%	*	43.3%	*	37.1%	*	37.9%	*	50.0%	*	70.0%	52.4%
9000016	CT Tech Ed & Career System	34.4%	68.6%	34.7%	64.4%	36.3%	66.5%	35.6%	62.3%	34.9%	60.1%	34.1%	60.9%	35.0%	58.8%
0320011	Coventry School District	39.3%	38.6%	37.7%	38.2%	46.4%	35.9%	33.8%	40.9%	46.1%	28.8%	38.4%	30.2%	47.5%	40.4%
0330011	Cromwell School District	42.7%	44.3%	43.4%	42.0%	40.9%	30.4%	34.6%	34.8%	45.4%	35.6%	41.5%	27.5%	43.0%	24.1%
0340011	Danbury School District	42.5%	44.9%	46.3%	39.7%	48.8%	36.2%	43.1%	38.4%	42.1%	40.5%	45.7%	34.6%	45.4%	34.8%

Graduating Class		2010	2010	2011	2011	2012	2012	2013	2013	2014	2014	2015	2015	2016	2016
District ID	District Name	% Enrolled in 16 Months	% Enrolled in Remediation†	% Enrolled in 16 Months	% Enrolled in Remediation†	% Enrolled in 16 Months	% Enrolled in Remediation†	% Enrolled in 16 Months	% Enrolled in Remediation†	% Enrolled in 16 Months	% Enrolled in Remediation†	% Enrolled in 16 Months	% Enrolled in Remediation†	% Enrolled in 16 Months	% Enrolled in Remediation†
0350011	Darien School District	12.8%	*	8.9%	*	9.2%	25.0%	5.6%	*	12.3%	15.0%	6.8%	*	8.4%	*
0370011	Derby School District	30.2%	57.7%	37.8%	47.1%	40.0%	58.3%	51.6%	78.8%	45.5%	42.2%	40.9%	50.0%	36.6%	60.0%
0400011	East Granby School District	37.0%	*	29.3%	*	35.0%	*	22.1%	*	45.0%	*	30.6%	*	33.8%	*
0410011	East Haddam School District	47.7%	21.2%	33.3%	31.0%	50.0%	28.3%	40.0%	28.9%	42.3%	39.0%	48.0%	35.4%	36.7%	20.7%
0420011	East Hampton School District	35.7%	41.2%	48.9%	39.1%	38.9%	29.5%	44.9%	24.6%	47.9%	31.6%	42.1%	17.6%	34.9%	23.1%
0430011	East Hartford School District	38.6%	60.8%	37.7%	53.5%	38.4%	54.2%	39.4%	53.2%	39.1%	50.3%	42.4%	45.7%	36.8%	44.5%
0440011	East Haven School District	30.1%	58.3%	43.4%	60.0%	52.3%	55.6%	40.9%	61.7%	43.0%	58.9%	40.7%	48.6%	47.5%	50.0%
0450011	East Lyme School District	26.2%	40.5%	32.0%	27.5%	29.4%	38.1%	25.6%	39.5%	32.4%	35.7%	34.1%	24.7%	24.7%	21.0%
0470011	East Windsor School District	45.5%	33.3%	43.8%	48.6%	40.7%	48.5%	24.4%	45.0%	35.6%	41.7%	33.3%	37.0%	32.4%	34.8%
2530014	EASTCONN	*	*	*	*	32.9%	53.8%	36.2%	57.1%	31.7%	40.0%	44.6%	31.0%	27.6%	38.1%
0480011	Ellington School District	47.0%	33.7%	45.0%	19.5%	38.7%	27.8%	48.1%	25.0%	42.7%	29.3%	41.4%	29.8%	41.7%	30.7%
0490011	Enfield School District	45.6%	53.7%	44.8%	48.0%	40.6%	44.3%	40.9%	42.8%	39.8%	49.0%	42.0%	41.3%	43.3%	43.1%
2720013	Explorations District	34.5%	*	*	*	*	*	26.1%	*	*	*	44.4%	*	*	*
0510011	Fairfield School District	19.8%	42.5%	20.8%	36.9%	20.2%	47.1%	24.2%	38.0%	19.6%	40.9%	18.5%	43.8%	19.6%	26.9%
0520011	Farmington School District	31.2%	47.7%	28.8%	35.9%	29.1%	38.1%	34.0%	34.0%	24.7%	24.1%	23.7%	30.8%	28.9%	38.3%
0540011	Glastonbury School District	32.9%	21.7%	32.3%	23.3%	25.5%	19.0%	29.3%	15.7%	23.2%	15.9%	25.4%	15.9%	26.9%	25.2%
0560011	Granby School District	22.9%	24.4%	25.5%	18.8%	28.6%	29.6%	27.5%	25.0%	28.0%	21.4%	26.6%	33.3%	20.3%	26.3%
0570011	Greenwich School District	11.1%	54.7%	16.3%	49.5%	13.7%	50.6%	18.0%	50.4%	16.4%	42.6%	15.4%	43.4%	13.5%	45.8%
0580011	Griswold School District	42.9%	45.2%	45.9%	47.4%	41.7%	35.7%	41.9%	40.0%	47.6%	41.4%	40.9%	32.1%	41.4%	43.6%
0590011	Groton School District	35.8%	47.0%	38.8%	38.5%	29.8%	47.1%	34.8%	38.3%	30.2%	39.3%	29.6%	34.7%	29.8%	54.3%
0600011	Guilford School District	18.6%	44.2%	23.3%	36.7%	20.6%	20.7%	24.3%	34.4%	21.6%	24.1%	21.3%	30.4%	25.7%	37.1%
0620011	Hamden School District	25.8%	64.5%	35.9%	52.2%	44.4%	54.2%	41.3%	64.4%	37.3%	46.3%	39.5%	50.3%	37.7%	51.9%
0640011	Hartford School District	16.0%	50.6%	17.7%	53.0%	18.4%	52.2%	42.1%	61.9%	37.3%	60.3%	39.9%	48.5%	40.9%	47.2%
0690011	Killingly School District	*	*	*	*	8.4%	*	41.4%	54.2%	39.1%	50.0%	37.7%	39.3%	41.6%	40.3%

Graduating Class		2010	2010	2011	2011	2012	2012	2013	2013	2014	2014	2015	2015	2016	2016
District ID	District Name	% Enrolled in 16 Months	% Enrolled in Remediation†	% Enrolled in 16 Months	% Enrolled in Remediation†	% Enrolled in 16 Months	% Enrolled in Remediation†	% Enrolled in 16 Months	% Enrolled in Remediation†	% Enrolled in 16 Months	% Enrolled in Remediation†	% Enrolled in 16 Months	% Enrolled in Remediation†	% Enrolled in 16 Months	% Enrolled in Remediation†
2450014	Learn	*	*	*	*	*	*	*	*	32.6%	29.8%	35.2%	42.1%	47.0%	36.8%
0710011	Lebanon School District	35.5%	46.5%	39.5%	37.9%	44.4%	28.8%	40.9%	26.7%	38.0%	37.1%	42.2%	31.6%	33.3%	36.4%
0720011	Ledyard School District	38.6%	56.0%	37.7%	46.3%	40.4%	38.5%	39.2%	32.5%	36.4%	46.3%	39.8%	39.8%	35.2%	29.3%
0740011	Litchfield School District	26.4%	42.9%	23.0%	*	27.5%	*	29.9%	30.8%	31.3%	*	28.2%	40.0%	27.7%	39.1%
0760011	Madison School District	14.7%	31.0%	13.0%	25.0%	18.1%	22.0%	17.9%	24.6%	18.2%	22.8%	21.0%	15.2%	17.8%	20.8%
0770011	Manchester School District	44.6%	47.0%	45.2%	55.2%	43.2%	52.5%	47.8%	49.0%	38.9%	45.6%	42.6%	48.5%	44.4%	40.9%
0800011	Meriden School District	37.2%	65.3%	39.1%	57.1%	42.0%	62.6%	41.5%	56.1%	36.4%	52.2%	40.0%	60.4%	37.0%	54.1%
0830011	Middletown School District	41.7%	53.3%	45.5%	53.6%	34.9%	63.4%	37.7%	43.1%	39.3%	50.8%	40.7%	45.0%	35.6%	48.2%
0840011	Milford School District	37.1%	51.0%	34.8%	49.0%	35.2%	51.5%	42.7%	44.5%	35.1%	33.0%	38.8%	37.3%	40.1%	36.6%
0850011	Monroe School District	30.3%	42.2%	27.1%	36.7%	27.2%	23.9%	31.5%	26.0%	33.0%	27.8%	29.1%	21.3%	29.1%	18.3%
0860011	Montville School District	48.6%	38.6%	41.8%	37.8%	40.3%	51.9%	34.1%	42.9%	33.7%	41.7%	39.8%	52.9%	44.6%	41.3%
0880011	Naugatuck School District	40.7%	48.1%	47.3%	52.7%	50.3%	48.8%	47.8%	56.2%	44.6%	46.5%	45.1%	50.7%	44.5%	49.2%
0890011	New Britain School District	43.9%	68.0%	49.6%	61.6%	49.2%	55.5%	40.5%	62.8%	46.0%	55.5%	44.1%	60.2%	38.9%	59.9%
0900011	New Canaan School District	9.0%	30.8%	10.1%	32.3%	10.8%	17.1%	8.3%	32.1%	10.3%	18.8%	6.8%	*	9.0%	*
0910011	New Fairfield School District	33.5%	41.9%	33.8%	33.8%	32.6%	17.1%	38.3%	16.8%	37.6%	21.6%	37.8%	15.2%	29.5%	14.3%
0930011	New Haven School District	32.3%	71.0%	39.3%	70.1%	42.5%	74.5%	43.2%	70.4%	43.5%	63.5%	44.1%	49.1%	42.1%	58.7%
0950011	New London School District	35.9%	70.9%	43.3%	59.7%	48.2%	47.5%	38.7%	60.0%	38.3%	52.2%	34.9%	43.1%	34.8%	50.7%
0960011	New Milford School District	38.3%	24.5%	33.1%	16.8%	41.5%	18.9%	40.2%	16.8%	35.7%	18.3%	40.0%	25.0%	28.8%	17.8%
0940011	Newington School District	45.0%	46.1%	48.4%	39.5%	47.1%	35.5%	41.8%	35.9%	48.3%	39.3%	42.6%	36.9%	41.5%	34.7%
0970011	Newtown School District	25.2%	39.0%	27.6%	28.2%	21.9%	27.6%	27.7%	19.2%	22.1%	17.4%	20.7%	26.4%	23.0%	15.6%
0990011	North Branford School District	38.1%	50.0%	41.7%	43.6%	39.1%	44.1%	46.3%	40.8%	36.9%	36.5%	48.7%	35.1%	49.6%	40.3%
1010011	North Haven School District	36.5%	53.7%	44.4%	49.2%	38.1%	42.7%	37.1%	47.1%	34.1%	32.0%	37.1%	40.6%	32.8%	40.5%
1020011	North Stonington School District	30.8%	*	34.4%	33.3%	29.2%	*	34.0%	*	25.0%	*	19.6%	*	21.4%	*
1030011	Norwalk School District	43.5%	62.9%	45.2%	64.6%	44.0%	54.5%	46.4%	55.1%	46.5%	51.6%	41.5%	50.6%	45.2%	48.5%



Graduating Class		2010	2010	2011	2011	2012	2012	2013	2013	2014	2014	2015	2015	2016	2016
District ID	District Name	% Enrolled in 16 Months	% Enrolled in Remediation†	% Enrolled in 16 Months	% Enrolled in Remediation†	% Enrolled in 16 Months	% Enrolled in Remediation†	% Enrolled in 16 Months	% Enrolled in Remediation†	% Enrolled in 16 Months	% Enrolled in Remediation†	% Enrolled in 16 Months	% Enrolled in Remediation†	% Enrolled in 16 Months	% Enrolled in Remediation†
9010022	Norwich Free Academy District	44.8%	50.8%	43.7%	49.6%	42.2%	40.9%	39.8%	42.6%	38.7%	45.7%	47.7%	38.4%	43.6%	43.9%
1060011	Old Saybrook School District	30.3%	30.6%	24.8%	*	22.5%	*	36.1%	31.3%	21.1%	51.9%	19.2%	*	28.5%	40.0%
1080011	Oxford School District	21.4%	37.5%	38.3%	31.6%	40.6%	41.1%	43.3%	43.1%	47.0%	31.6%	28.1%	25.0%	36.3%	26.5%
1090011	Plainfield School District	47.0%	51.6%	38.8%	48.1%	41.6%	51.9%	34.1%	34.4%	48.0%	46.6%	41.7%	35.0%	36.9%	24.2%
1100011	Plainville School District	51.2%	55.8%	48.8%	48.0%	48.7%	38.9%	55.1%	52.4%	50.0%	43.8%	56.5%	42.9%	44.3%	40.2%
1110011	Plymouth School District	35.5%	65.9%	40.8%	47.2%	39.7%	46.0%	43.5%	50.0%	44.1%	46.4%	47.7%	38.5%	42.9%	50.0%
1130011	Portland School District	38.6%	35.3%	39.5%	46.9%	38.8%	36.4%	39.0%	25.0%	41.7%	37.2%	42.5%	27.0%	36.8%	31.3%
1160011	Putnam School District	49.4%	46.2%	30.8%	45.0%	35.5%	59.1%	36.3%	41.4%	16.2%	*	32.3%	52.4%	42.9%	36.7%
2010012	Regional School District 01	32.0%	62.5%	16.4%	*	18.8%	*	19.6%	45.0%	23.1%	48.0%	20.7%	*	28.7%	41.4%
2040012	Regional School District 04	25.9%	36.1%	18.0%	44.4%	23.3%	25.7%	34.0%	34.0%	31.1%	41.5%	22.0%	25.6%	22.9%	45.7%
2050012	Regional School District 05	21.2%	29.8%	24.7%	31.6%	29.4%	36.3%	25.9%	35.4%	28.5%	22.4%	29.7%	14.2%	27.3%	21.9%
2060012	Regional School District 06	26.9%	47.6%	40.7%	40.5%	32.1%	40.7%	31.5%	48.3%	40.7%	54.3%	28.2%	58.3%	33.0%	51.5%
2070012	Regional School District 07	32.1%	39.3%	38.1%	40.0%	31.8%	42.9%	34.6%	37.5%	37.6%	37.8%	36.6%	50.0%	37.6%	52.1%
2080012	Regional School District 08	39.3%	26.2%	43.2%	22.2%	40.1%	22.3%	27.3%	17.3%	31.6%	19.1%	34.5%	11.2%	35.2%	20.5%
2090012	Regional School District 09	11.7%	37.0%	13.2%	*	19.2%	*	12.4%	21.4%	21.6%	13.2%	13.4%	*	17.5%	*
2100012	Regional School District 10	34.4%	44.8%	33.5%	41.4%	39.9%	42.7%	34.0%	29.7%	29.6%	47.6%	33.7%	38.7%	32.8%	35.5%
2110012	Regional School District 11	45.7%	*	46.4%	*	45.2%	*	50.0%	*	58.8%	30.0%	45.3%	33.3%	38.5%	*
2120012	Regional School District 12	24.0%	*	23.5%	*	26.6%	*	*	*	32.9%	23.1%	27.5%	*	27.3%	*
2130012	Regional School District 13	42.1%	31.1%	36.9%	45.8%	39.6%	34.5%	39.9%	24.6%	38.8%	38.0%	31.1%	34.0%	39.7%	21.4%
2140012	Regional School District 14	26.0%	42.3%	31.0%	43.1%	27.7%	41.5%	31.7%	25.9%	28.4%	30.5%	34.1%	42.9%	28.7%	21.2%
2150012	Regional School District 15	34.5%	36.4%	29.4%	32.4%	30.4%	27.8%	29.9%	28.3%	25.9%	21.2%	27.5%	16.7%	28.0%	24.4%
2160012	Regional School District 16	45.2%	48.3%	50.6%	41.1%	41.1%	47.4%	41.2%	42.5%	45.4%	30.4%	39.9%	29.9%	39.0%	25.4%
2170012	Regional School District 17	42.9%	34.8%	36.7%	32.3%	32.8%	32.2%	32.3%	35.3%	32.0%	29.2%	35.9%	31.7%	26.6%	32.4%
2180012	Regional School District 18	16.3%	*	20.6%	40.7%	20.8%	*	20.4%	27.3%	19.8%	*	19.0%	*	16.2%	*

Graduating Class		2010	2010	2011	2011	2012	2012	2013	2013	2014	2014	2015	2015	2016	2016
District ID	District Name	% Enrolled in 16 Months	% Enrolled in Remediation†	% Enrolled in 16 Months	% Enrolled in Remediation†	% Enrolled in 16 Months	% Enrolled in Remediation†	% Enrolled in 16 Months	% Enrolled in Remediation†	% Enrolled in 16 Months	% Enrolled in Remediation†	% Enrolled in 16 Months	% Enrolled in Remediation†	% Enrolled in 16 Months	% Enrolled in Remediation†
2190012	Regional School District 19	31.5%	27.1%	28.9%	27.8%	36.5%	23.0%	29.4%	18.9%	33.0%	25.8%	30.2%	14.1%	32.7%	16.7%
1180011	Ridgefield School District	12.4%	15.1%	12.7%	22.2%	12.7%	21.8%	13.8%	*	12.1%	12.7%	12.7%	*	10.4%	*
1190011	Rocky Hill School District	40.8%	48.3%	45.2%	42.7%	44.6%	44.8%	41.8%	36.2%	37.3%	40.9%	47.3%	26.1%	43.6%	32.0%
1240011	Seymour School District	36.2%	50.7%	41.3%	39.4%	52.1%	65.8%	51.0%	52.5%	48.0%	36.7%	46.7%	47.6%	42.3%	46.4%
1260011	Shelton School District	32.0%	46.0%	32.6%	42.4%	35.0%	44.1%	43.1%	40.3%	38.4%	35.1%	38.4%	18.6%	42.5%	29.8%
1280011	Simsbury School District	17.5%	28.6%	19.1%	22.7%	18.2%	16.7%	21.3%	32.1%	16.8%	29.7%	20.5%	28.0%	20.4%	23.0%
1290011	Somers School District	38.6%	45.1%	37.0%	23.5%	29.2%	30.0%	39.6%	19.3%	37.2%	43.8%	24.0%	37.9%	31.9%	27.0%
1320011	South Windsor School District	44.0%	25.6%	41.7%	29.1%	38.6%	26.8%	34.9%	19.7%	37.0%	28.5%	36.9%	23.6%	32.2%	18.0%
1310011	Southington School District	42.5%	43.3%	44.6%	44.2%	44.4%	35.9%	38.9%	38.9%	40.4%	32.8%	43.4%	31.8%	38.0%	31.7%
1340011	Stafford School District	46.4%	33.3%	47.8%	31.5%	31.7%	26.7%	38.8%	26.7%	40.9%	37.5%	34.1%	37.9%	39.6%	26.2%
2820013	Stamford Academy District	*	*	*	*	30.0%	*	*	*	24.0%	*	21.4%	*	42.9%	*
1350011	Stamford School District	38.5%	61.8%	43.4%	63.1%	41.4%	62.7%	43.5%	59.5%	41.9%	53.0%	40.2%	54.3%	41.8%	53.3%
1370011	Stonington School District	27.6%	51.0%	24.5%	20.8%	18.0%	38.7%	27.9%	32.1%	17.2%	31.0%	26.3%	31.9%	21.5%	30.8%
1380011	Stratford School District	39.1%	51.6%	47.4%	52.4%	43.9%	52.4%	43.3%	51.8%	45.2%	47.8%	44.1%	44.2%	46.3%	46.8%
1390011	Suffield School District	32.0%	41.5%	32.7%	31.3%	26.7%	45.1%	26.6%	29.1%	31.7%	30.3%	33.3%	30.9%	30.7%	32.8%
2690013	The Bridge Academy District	29.0%	*	37.9%	*	33.3%	*	54.5%	*	65.6%	66.7%	83.3%	52.0%	65.6%	85.7%
9020022	The Gilbert School District	47.7%	62.7%	35.6%	66.7%	38.1%	62.5%	52.9%	62.2%	42.9%	69.7%	34.1%	72.4%	29.2%	61.5%
9030022	The Woodstock Academy District	43.5%	41.0%	40.8%	44.3%	42.2%	36.2%	38.4%	34.6%	37.0%	33.7%	33.7%	28.1%	39.3%	24.5%
1400011	Thomaston School District	41.1%	41.0%	51.0%	54.0%	48.2%	50.0%	41.9%	48.4%	42.9%	63.3%	38.3%	34.8%	37.3%	*
1410011	Thompson School District	36.3%	54.5%	26.7%	47.8%	38.9%	37.1%	30.1%	48.0%	32.5%	30.8%	41.9%	26.9%	26.8%	*
1420011	Tolland School District	34.2%	29.5%	37.7%	28.9%	40.4%	33.0%	37.4%	18.5%	42.6%	21.7%	31.5%	17.2%	46.9%	14.0%
1430011	Torrington School District	35.3%	50.0%	39.0%	40.2%	34.3%	56.5%	37.5%	56.4%	37.8%	37.5%	39.1%	56.5%	36.6%	57.5%
1440011	Trumbull School District	28.4%	37.2%	30.3%	29.1%	24.8%	27.3%	35.8%	29.7%	34.0%	23.5%	30.2%	25.8%	31.7%	23.5%
1460011	Vernon School District	38.6%	43.9%	39.1%	32.0%	46.1%	40.2%	44.3%	38.7%	37.5%	40.0%	35.7%	32.9%	40.0%	26.6%

Graduating Class		2010	2010	2011	2011	2012	2012	2013	2013	2014	2014	2015	2015	2016	2016
District ID	District Name	% Enrolled in 16 Months	% Enrolled in Remediation†	% Enrolled in 16 Months	% Enrolled in Remediation†	% Enrolled in 16 Months	% Enrolled in Remediation†	% Enrolled in 16 Months	% Enrolled in Remediation†	% Enrolled in 16 Months	% Enrolled in Remediation†	% Enrolled in 16 Months	% Enrolled in Remediation†	% Enrolled in 16 Months	% Enrolled in Remediation†
1480011	Wallingford School District	32.1%	49.7%	42.0%	45.2%	46.3%	37.6%	39.1%	45.9%	38.2%	37.6%	39.2%	30.1%	42.7%	38.3%
1510011	Waterbury School District	38.5%	69.2%	44.6%	67.5%	43.4%	69.0%	43.0%	70.4%	44.3%	69.3%	41.7%	61.3%	44.7%	64.9%
1520011	Waterford School District	36.7%	48.1%	37.1%	44.1%	35.6%	26.6%	30.5%	39.1%	43.2%	34.1%	37.1%	40.8%	38.5%	42.0%
1530011	Watertown School District	44.9%	60.8%	42.0%	36.1%	44.7%	45.9%	41.8%	51.9%	42.0%	50.0%	50.3%	48.0%	45.6%	37.9%
1550011	West Hartford School District	29.4%	47.5%	29.4%	41.9%	29.9%	41.7%	27.2%	40.3%	27.4%	47.0%	29.9%	35.1%	28.2%	38.2%
1560011	West Haven School District	41.6%	66.4%	38.6%	60.9%	46.5%	65.2%	44.0%	59.4%	40.4%	48.5%	46.8%	56.2%	42.6%	59.1%
1540011	Westbrook School District	27.0%	*	36.1%	*	34.7%	46.2%	24.4%	*	38.0%	48.1%	32.0%	25.0%	27.9%	*
1570011	Weston School District	9.2%	*	8.9%	*	10.6%	*	12.3%	*	7.4%	*	9.8%	*	8.7%	*
1580011	Westport School District	8.3%	48.5%	9.3%	*	11.9%	*	11.5%	24.5%	9.5%	16.7%	9.2%	16.7%	8.2%	*
1590011	Wethersfield School District	39.5%	37.8%	37.0%	43.0%	39.3%	38.7%	43.5%	27.1%	41.4%	37.5%	44.8%	30.8%	37.1%	24.1%
1610011	Wilton School District	15.9%	*	14.2%	20.9%	10.9%	*	13.3%	*	10.6%	*	12.1%	23.1%	13.0%	*
1630011	Windham School District	45.1%	55.9%	40.2%	50.0%	46.4%	57.1%	46.9%	44.6%	37.0%	62.7%	50.9%	50.9%	39.8%	42.9%
1650011	Windsor Locks School District	41.8%	44.6%	33.9%	52.5%	34.1%	50.0%	34.8%	37.0%	35.4%	55.6%	29.6%	41.2%	33.3%	36.4%
1640011	Windsor School District	43.1%	50.0%	41.8%	53.8%	42.6%	45.2%	42.4%	58.1%	45.1%	49.6%	40.2%	50.4%	46.0%	36.0%
1660011	Wolcott School District	50.7%	46.6%	42.6%	48.9%	48.3%	39.2%	48.3%	39.2%	50.8%	33.1%	46.3%	24.7%	44.5%	38.7%

\* Data suppressed to protect confidentiality

† This row is a subset of the column immediately preceding it.

Source: P20WIN data and SDE calculations

Table 6: Credit Attainment by School at All Connecticut Public Universities and Community Colleges

School ID	Graduating Class School Name	2010	2010	2011	2011	2012	2012	2013	2013	2014	2014	2015	2015	2016	2016
		% Enrolled in 16 Months	% Earning 24 Credits†	% Enrolled in 16 Months	% Earning 24 Credits†	% Enrolled in 16 Months	% Earning 24 Credits†	% Enrolled in 16 Months	% Earning 24 Credits†	% Enrolled in 16 Months	% Earning 24 Credits†	% Enrolled in 16 Months	% Earning 24 Credits†	% Enrolled in 16 Months	% Earning 24 Credits†
0026111	Ansonia High School	41.6%	67.2%	34.5%	69.4%	49.7%	67.8%	46.6%	66.7%	43.6%	58.6%	50.4%	53.5%	54.2%	65.6%
0046111	Avon High School	26.3%	75.0%	30.9%	70.1%	29.6%	81.9%	31.0%	71.3%	30.1%	79.3%	31.3%	82.7%	34.3%	81.7%
0076111	Berlin High School	43.4%	75.5%	49.2%	71.3%	51.2%	75.2%	51.9%	79.1%	53.7%	75.4%	48.0%	74.2%	53.3%	85.2%
0096111	Bethel High School	40.6%	78.6%	42.4%	69.3%	51.7%	79.2%	41.2%	72.3%	42.5%	63.6%	41.3%	73.9%	51.0%	75.0%
0116111	Bloomfield High School	44.2%	58.5%	47.9%	62.7%	46.8%	45.8%	50.4%	56.9%	51.2%	65.1%	52.9%	62.5%	49.6%	52.5%
0116311	Global Experience Magnet Schl	*	*	*	*	*	*	34.4%	*	48.1%	*	60.0%	*	64.0%	*
0126111	Bolton High School	51.5%	76.5%	54.4%	83.8%	57.6%	78.9%	58.8%	83.0%	54.2%	73.1%	52.1%	57.9%	50.0%	85.4%
0146111	Branford High School	33.4%	75.5%	39.4%	60.4%	40.0%	66.3%	37.1%	72.6%	37.7%	70.8%	42.1%	72.0%	41.4%	62.2%
0150611	Biotech, Resrch & Zoo Studies	*	*	*	*	*	*	*	*	*	*	*	*	51.3%	59.0%
0150811	Aero/Hydro, Engin & Physical Sci	*	*	*	*	*	*	*	*	*	*	*	*	54.2%	53.1%
0151511	IT & Software Engineering Magnet	*	*	*	*	*	*	*	*	*	*	*	*	54.4%	51.4%
0156111	Bassick High School	34.7%	39.7%	32.4%	35.6%	40.3%	40.6%	41.0%	35.6%	29.2%	42.9%	47.8%	37.2%	46.3%	47.9%
0156211	Central High School	43.1%	54.8%	46.3%	60.4%	40.4%	59.6%	47.3%	58.6%	44.9%	51.4%	54.6%	54.2%	50.7%	57.8%
0156311	Warren Harding High School	34.6%	44.0%	38.6%	39.8%	36.9%	43.0%	29.6%	43.8%	35.5%	34.1%	36.7%	35.4%	37.9%	34.9%
0176111	Bristol Central High School	45.0%	66.4%	45.1%	68.3%	38.6%	71.2%	45.6%	68.5%	38.0%	69.7%	43.1%	64.3%	45.0%	58.5%
0176211	Bristol Eastern High School	47.0%	73.1%	51.4%	67.3%	51.1%	77.5%	48.1%	80.3%	47.2%	68.5%	49.3%	67.9%	43.4%	59.1%
0186111	Brookfield High School	38.2%	77.8%	42.6%	77.1%	45.6%	72.2%	34.6%	75.6%	36.6%	74.7%	40.0%	81.1%	34.9%	71.2%
0236111	Canton High School	36.1%	62.5%	33.9%	66.7%	31.9%	64.9%	37.3%	81.8%	38.1%	66.7%	32.5%	70.7%	35.3%	66.7%
0256111	Cheshire High School	36.2%	73.8%	43.5%	69.5%	43.0%	78.4%	39.2%	79.9%	33.9%	80.6%	38.5%	78.6%	37.2%	77.9%
0276111	The Morgan School	41.4%	70.7%	43.3%	59.0%	39.0%	87.0%	46.2%	80.0%	50.8%	73.8%	38.5%	65.5%	43.8%	82.5%
0286111	Bacon Academy	53.0%	70.2%	51.5%	71.8%	52.1%	66.9%	52.7%	74.8%	48.6%	70.6%	41.1%	78.4%	50.7%	77.7%
0326111	Coventry High School	51.4%	73.7%	41.8%	72.1%	52.9%	67.1%	44.6%	67.2%	53.9%	76.8%	48.1%	63.5%	52.2%	75.0%
0336111	Cromwell High School	49.0%	68.6%	51.6%	63.4%	48.9%	70.1%	45.1%	70.0%	50.8%	68.2%	52.0%	78.1%	53.3%	76.4%
0346111	Danbury High School	50.2%	71.1%	53.3%	65.1%	54.8%	68.9%	50.2%	70.8%	48.3%	68.0%	50.9%	70.5%	52.2%	73.8%
0346211	Alt. Center for Excellence	*	*	*	*	*	*	*	*	30.0%	*	29.6%	*	52.2%	*
0356111	Darien High School	16.1%	52.3%	10.1%	62.5%	11.8%	61.1%	9.5%	75.9%	13.8%	48.9%	10.5%	58.8%	11.1%	59.5%
0376111	Derby High School	32.6%	50.0%	38.9%	74.3%	44.4%	65.0%	54.7%	74.3%	48.5%	52.1%	43.2%	68.4%	40.2%	42.4%
0406111	East Granby High School	41.3%	*	34.7%	*	40.0%	62.5%	30.9%	76.2%	53.3%	65.6%	38.7%	79.2%	46.5%	66.7%
0416111	Nathan Hale-Ray High School	53.8%	68.4%	41.4%	88.9%	52.2%	79.2%	45.3%	74.4%	48.5%	74.5%	51.0%	68.6%	39.2%	67.7%
0426111	East Hampton High School	45.0%	66.7%	54.3%	68.6%	49.7%	76.3%	57.9%	80.8%	55.6%	83.1%	47.9%	68.4%	42.1%	72.1%
0436211	East Hartford High School	48.8%	55.3%	53.6%	55.2%	55.0%	54.3%	50.3%	51.5%	50.0%	54.6%	54.2%	54.0%	46.7%	48.6%

Trends in Enrollment, Credit Attainment, and Remediation  
at Connecticut Public Universities and Community Colleges:  
Results from P20WIN for the Graduating Classes of 2010 through 2016

School ID	Graduating Class School Name	2010	2010	2011	2011	2012	2012	2013	2013	2014	2014	2015	2015	2016	2016
		% Enrolled in 16 Months	% Earning 24 Credits†	% Enrolled in 16 Months	% Earning 24 Credits†	% Enrolled in 16 Months	% Earning 24 Credits†	% Enrolled in 16 Months	% Earning 24 Credits†	% Enrolled in 16 Months	% Earning 24 Credits†	% Enrolled in 16 Months	% Earning 24 Credits†	% Enrolled in 16 Months	% Earning 24 Credits†
0436311	Connecticut IB Academy	21.4%	*	30.3%	*	40.0%	*	54.1%	85.0%	53.3%	83.3%	51.2%	100%	65.9%	82.8%
0436411	Synergy Alternative Program	*	*	*	*	*	*	16.3%	*	15.1%	*	15.9%	*	15.8%	*
0446111	East Haven High School	33.3%	66.2%	47.5%	65.6%	56.8%	62.5%	45.3%	67.8%	44.7%	62.2%	42.9%	59.0%	50.0%	62.2%
0456111	East Lyme High School	38.2%	60.9%	44.8%	70.6%	39.5%	66.4%	39.4%	75.2%	43.2%	74.1%	48.3%	73.8%	36.3%	77.0%
0476111	East Windsor High School	51.5%	62.7%	46.3%	83.8%	46.9%	52.6%	28.0%	73.9%	45.5%	60.9%	40.7%	72.7%	33.8%	62.5%
0486111	Ellington High School	57.4%	79.0%	51.5%	71.6%	49.5%	76.1%	56.8%	79.8%	52.6%	70.3%	52.7%	77.6%	51.1%	69.6%
0496111	Enfield High School	48.5%	59.4%	48.7%	73.2%	43.8%	71.4%	48.0%	60.3%	48.5%	60.8%	42.6%	73.3%	47.1%	55.0%
0496211	Enrico Fermi High School	51.2%	62.5%	49.8%	62.5%	47.1%	74.4%	43.9%	65.7%	45.8%	65.3%	50.7%	60.4%	45.5%	72.2%
0516011	Fairfield Ludlowe High School	23.1%	63.0%	23.4%	65.8%	25.4%	59.6%	27.1%	69.0%	23.8%	66.7%	22.8%	72.9%	25.6%	73.6%
0516211	Fairfield Warde High School	27.5%	63.3%	29.8%	68.6%	29.5%	61.1%	32.5%	67.7%	27.1%	70.2%	28.9%	75.0%	29.4%	66.7%
0526111	Farmington High School	42.3%	74.5%	36.4%	66.4%	38.4%	69.4%	47.1%	75.5%	39.0%	70.2%	33.6%	75.9%	40.1%	68.5%
0546111	Glastonbury High School	46.5%	75.8%	43.7%	74.2%	41.7%	77.2%	42.7%	78.9%	34.8%	81.0%	39.1%	76.8%	40.5%	75.9%
0566111	Granby Memorial High School	30.2%	70.4%	31.9%	68.3%	35.4%	71.6%	41.8%	75.9%	38.2%	71.1%	37.3%	66.1%	31.0%	70.7%
0576111	Greenwich High School	17.2%	56.9%	21.4%	56.4%	21.0%	67.7%	25.5%	68.4%	20.2%	57.9%	22.9%	64.5%	22.2%	75.8%
0586211	Griswold High School	47.6%	53.1%	52.9%	56.7%	44.6%	72.0%	49.7%	61.0%	49.7%	54.8%	45.2%	72.1%	47.0%	62.9%
0596111	Robert E. Fitch High School	47.1%	63.0%	50.7%	69.9%	44.9%	65.6%	43.7%	64.4%	37.7%	59.6%	46.5%	75.0%	40.9%	55.8%
0606111	Guilford High School	26.4%	63.5%	29.2%	73.3%	30.1%	64.7%	31.6%	73.5%	29.7%	76.3%	31.2%	75.6%	36.1%	78.2%
0626111	Hamden High School	30.0%	54.9%	40.3%	69.0%	47.5%	68.4%	48.5%	63.2%	42.9%	61.3%	43.0%	57.3%	43.8%	59.6%
0641111	Kinsella Magnet Performing Arts	*	*	*	*	*	*	*	*	*	*	*	*	51.5%	*
0643611	Global Communications Academy	*	*	*	*	*	*	*	*	*	*	*	*	46.2%	*
0643911	Capital Comm College Magnet	*	*	*	*	*	*	*	*	*	*	*	*	57.1%	*
0645411	Hartford Magnet Trinity College	*	*	*	*	*	*	*	*	*	*	49.3%	55.6%	60.5%	60.9%
0646011	Culinary Arts Academy-Weaver	*	*	*	*	15.9%	*	28.3%	*	21.3%	*	21.4%	*	41.2%	38.1%
0646311	Weaver High School	35.3%	40.8%	*	*	*	*	N/A	N/A	N/A	N/A				
0646411	Classical Magnet School	26.2%	*	49.4%	*	43.9%	63.9%	54.8%	54.3%	51.9%	83.3%	57.0%	80.0%	51.9%	51.2%
0646511	Sport & Medical Sciences Acad	61.8%	66.0%	47.4%	65.2%	52.5%	67.3%	64.8%	56.1%	64.2%	54.1%	53.3%	53.1%	56.8%	54.0%
0646611	Pathways Acad Tech & Design	58.2%	47.8%	54.7%	48.9%	40.0%	68.8%	56.1%	35.1%	45.5%	56.7%	60.9%	53.8%	52.3%	54.3%
0646711	Univ HS Science/Engineering	36.4%	65.0%	40.0%	71.4%	46.8%	80.6%	53.8%	72.0%	51.3%	79.5%	55.6%	68.0%	60.4%	72.7%
0646911	Capital Preparatory Magnet	*	*	40.7%	*	*	*	51.5%	*	52.8%	57.1%	43.6%	*	45.8%	*
0647111	Bulkeley High School	6.6%	*	4.7%	*	5.1%	*	39.1%	41.3%	32.2%	42.9%	38.7%	46.6%	36.1%	30.4%
0647211	HPHS Engineering & Green Tech	*	*	*	*	20.8%	55.0%	36.7%	45.5%	49.2%	32.3%	37.5%	45.5%	31.6%	*
0647411	HPHS Law & Government Acad	20.9%	*	13.4%	*	11.4%	*	40.0%	38.6%	39.6%	40.5%	46.9%	57.9%	45.0%	50.0%

Graduating Class		2010	2010	2011	2011	2012	2012	2013	2013	2014	2014	2015	2015	2016	2016
School ID	School Name	% Enrolled in 16 Months	% Earning 24 Credits†	% Enrolled in 16 Months	% Earning 24 Credits†	% Enrolled in 16 Months	% Earning 24 Credits†	% Enrolled in 16 Months	% Earning 24 Credits†	% Enrolled in 16 Months	% Earning 24 Credits†	% Enrolled in 16 Months	% Earning 24 Credits†	% Enrolled in 16 Months	% Earning 24 Credits†
0647511	HPHS Nursing & Health Science	*	*	11.1%	*	*	*	50.0%	39.6%	52.1%	34.0%	33.0%	31.0%	36.7%	34.5%
0647611	High School, Inc.	*	*	*	*	*	*	47.5%	50.0%	28.3%	*	33.8%	34.8%	51.6%	40.6%
0647711	Journalism & Media Academy	*	*	*	*	12.2%	*	46.2%	33.3%	31.6%	*	50.0%	30.0%	*	*
0647911	Great Path Academy at MCC	*	*	*	*	*	*	57.6%	68.4%	63.0%	64.7%	60.0%	50.0%	55.9%	57.6%
0696111	Killingly High School	6.1%	*	9.7%	*	14.8%	87.0%	44.5%	70.1%	41.9%	65.3%	40.6%	68.3%	47.1%	68.8%
0716211	Lyman Memorial High School	44.6%	74.1%	47.6%	68.6%	49.6%	63.8%	49.1%	57.4%	50.0%	82.6%	51.1%	78.3%	45.5%	77.8%
0726111	Ledyard High School	45.8%	50.9%	42.9%	58.2%	49.7%	68.8%	48.6%	70.9%	45.3%	66.7%	47.3%	64.4%	46.5%	72.7%
0746111	Litchfield High School	32.1%	64.7%	27.6%	66.7%	37.3%	76.3%	42.5%	70.3%	37.5%	83.3%	32.4%	73.9%	39.8%	75.8%
0766111	Daniel Hand High School	26.0%	73.0%	18.9%	70.7%	26.1%	70.6%	27.0%	70.9%	30.6%	70.8%	31.5%	76.8%	24.6%	79.5%
0776111	Manchester High School	54.3%	65.7%	55.1%	68.0%	52.7%	61.5%	54.2%	62.0%	46.8%	58.0%	49.3%	58.4%	54.2%	54.2%
0806111	Francis T. Maloney High School	40.7%	56.4%	43.3%	60.6%	48.6%	59.3%	44.8%	64.7%	38.1%	65.6%	41.3%	52.5%	38.0%	61.9%
0806211	Orville H. Platt High School	42.2%	55.4%	42.2%	46.7%	40.4%	60.2%	45.0%	52.0%	43.8%	52.8%	44.3%	42.6%	45.8%	61.2%
0836211	Middletown High School	46.0%	61.2%	50.2%	69.6%	41.2%	63.2%	43.4%	67.4%	49.5%	69.2%	51.3%	69.4%	47.1%	66.9%
0840311	The Academy	*	*	*	*	*	*	*	*	*	*	*	*	31.8%	*
0846211	Jonathan Law High School	41.2%	72.6%	40.7%	71.6%	36.8%	56.0%	45.8%	69.1%	40.4%	71.8%	51.8%	72.7%	48.7%	65.8%
0846311	Joseph A. Foran High School	45.8%	69.7%	43.1%	73.6%	42.6%	64.0%	47.6%	68.1%	45.5%	81.3%	42.4%	77.3%	42.9%	73.2%
0856111	Masuk High School	38.0%	67.3%	43.2%	82.1%	37.3%	73.8%	40.0%	72.1%	41.2%	73.6%	41.0%	80.5%	40.7%	76.8%
0866111	Montville High School	55.3%	56.4%	53.2%	66.3%	47.7%	62.0%	47.5%	72.0%	42.4%	69.4%	51.2%	72.4%	56.9%	68.1%
0886111	Naugatuck High School	45.3%	61.6%	52.1%	65.6%	56.3%	73.7%	53.7%	62.3%	49.1%	68.3%	51.2%	58.6%	50.9%	68.1%
0896111	New Britain High School	48.6%	57.6%	52.7%	51.5%	52.8%	57.7%	45.9%	50.5%	53.1%	60.3%	47.9%	48.3%	43.7%	51.4%
0906111	New Canaan High School	13.1%	65.8%	13.4%	53.7%	13.3%	53.5%	11.5%	61.5%	13.5%	42.9%	9.4%	65.5%	11.8%	54.5%
0916111	New Fairfield High School	39.7%	64.7%	39.9%	73.6%	39.9%	82.8%	41.9%	78.8%	45.7%	78.5%	46.6%	84.3%	39.6%	79.1%
0931711	Eng - Science Univ Magnet School	*	*	*	*	*	*	*	*	*	*	56.4%	67.7%	61.1%	69.7%
0936011	Metropolitan Business Acad.	48.3%	*	43.8%	*	54.1%	55.0%	53.8%	46.5%	52.9%	41.3%	55.7%	63.6%	57.4%	42.6%
0936111	Wilbur Cross High School	32.5%	30.0%	39.0%	34.6%	40.3%	39.2%	36.2%	50.6%	40.3%	46.9%	39.6%	47.7%	44.5%	52.1%
0936211	James Hillhouse High School	39.7%	45.0%	51.8%	49.0%	43.0%	41.2%	44.5%	47.1%	42.9%	42.5%	46.8%	50.0%	47.9%	44.7%
0936311	Hill Regional Career High Schl	38.6%	52.5%	47.3%	53.5%	51.4%	69.4%	58.0%	57.8%	56.4%	68.2%	53.0%	72.4%	58.3%	73.0%
0936411	Cooperative High School	39.2%	42.1%	35.1%	54.5%	50.8%	68.3%	48.8%	51.3%	48.4%	58.4%	52.9%	46.6%	47.1%	59.4%
0936611	High School in The Community	34.8%	39.1%	60.0%	66.7%	46.7%	47.6%	43.2%	*	50.0%	*	51.4%	*	57.6%	*
0936711	Sound School	34.4%	*	30.9%	*	55.0%	50.0%	51.4%	44.7%	48.8%	69.2%	42.2%	70.4%	62.5%	55.6%
0936811	Cortlandt VR Creed Hlth & Sport	36.1%	*	36.4%	*	38.1%	*	25.8%	*	45.7%	*	54.3%	40.0%	33.3%	*
0937011	New Haven Academy	44.4%	*	40.0%	60.0%	66.7%	*	53.6%	50.0%	46.0%	65.5%	58.3%	75.0%	39.6%	*

Graduating Class		2010	2010	2011	2011	2012	2012	2013	2013	2014	2014	2015	2015	2016	2016
School ID	School Name	% Enrolled in 16 Months	% Earning 24 Credits†	% Enrolled in 16 Months	% Earning 24 Credits†	% Enrolled in 16 Months	% Earning 24 Credits†	% Enrolled in 16 Months	% Earning 24 Credits†	% Enrolled in 16 Months	% Earning 24 Credits†	% Enrolled in 16 Months	% Earning 24 Credits†	% Enrolled in 16 Months	% Earning 24 Credits†
0939111	Riverside Education Academy	*	*	*	*	*	*	44.0%	*	36.0%	*	23.1%	*	28.6%	*
0946111	Newington High School	55.6%	70.1%	57.7%	76.3%	54.8%	77.4%	55.3%	72.4%	58.0%	73.8%	48.9%	75.4%	50.5%	74.2%
0956111	New London High School	38.2%	32.8%	46.9%	38.6%	53.6%	42.7%	45.6%	50.0%	45.0%	45.7%	40.4%	50.7%	42.9%	50.6%
0966111	New Milford High School	45.2%	77.5%	39.7%	80.9%	50.6%	78.8%	47.6%	77.2%	42.6%	77.2%	47.1%	73.5%	38.5%	87.4%
0976111	Newtown High School	32.4%	67.4%	33.7%	69.2%	30.4%	73.6%	36.4%	74.4%	30.1%	76.8%	32.6%	76.2%	31.9%	74.4%
0996111	North Branford High School	45.6%	64.2%	44.4%	63.9%	42.4%	76.6%	54.3%	77.5%	42.8%	76.3%	54.8%	75.6%	54.5%	75.3%
1016111	North Haven High School	42.2%	64.8%	53.0%	72.0%	46.7%	78.6%	42.5%	65.5%	40.3%	66.1%	44.1%	65.8%	38.1%	77.1%
1026111	Wheeler High School	40.4%	*	42.6%	69.2%	33.3%	*	38.3%	*	42.9%	75.0%	37.0%	*	35.7%	*
1036111	Norwalk High School	47.7%	61.5%	51.6%	57.5%	53.0%	58.1%	51.1%	64.5%	53.8%	61.3%	49.7%	60.0%	54.8%	63.7%
1036211	Brien McMahon High School	48.6%	56.8%	50.9%	59.5%	47.6%	54.8%	52.8%	64.2%	47.8%	59.5%	47.0%	63.4%	52.6%	63.0%
1036311	Norwalk Pathways @ Briggs	37.1%	*	*	*	*	*	*	*	48.3%	*	*	*	23.1%	*
1066111	Old Saybrook Senior High Schl	37.0%	70.5%	39.8%	84.4%	28.3%	79.5%	47.4%	73.0%	28.9%	64.9%	28.3%	76.5%	37.4%	87.0%
1086011	Oxford High School	32.1%	63.9%	50.3%	74.7%	50.7%	68.6%	52.0%	74.4%	53.6%	65.6%	39.5%	84.4%	43.6%	77.6%
1096111	Plainfield High School	49.5%	56.1%	44.5%	69.9%	45.9%	55.3%	36.3%	61.5%	52.0%	51.9%	47.2%	70.6%	41.1%	72.5%
1106111	Plainville High School	54.7%	59.5%	52.6%	61.8%	52.3%	65.7%	61.5%	73.9%	53.1%	75.3%	60.9%	63.3%	51.9%	68.8%
1116111	Terryville High School	42.7%	56.6%	46.2%	63.3%	45.2%	63.2%	51.3%	67.8%	50.8%	74.2%	53.3%	63.2%	49.5%	65.3%
1136111	Portland High School	46.6%	70.7%	45.7%	75.7%	45.9%	79.5%	51.2%	71.4%	45.6%	70.2%	49.4%	65.1%	43.7%	73.7%
1166111	Putnam High School	52.6%	46.3%	37.1%	47.8%	38.3%	56.5%	39.2%	58.1%	21.5%	*	42.1%	70.8%	50.8%	69.7%
1186111	Ridgefield High School	21.7%	76.3%	20.2%	78.8%	20.5%	74.2%	22.0%	76.4%	18.5%	70.2%	18.5%	75.6%	18.3%	72.7%
1196111	Rocky Hill High School	52.1%	60.4%	57.8%	74.0%	56.4%	82.7%	54.5%	77.8%	49.7%	83.0%	59.6%	79.2%	54.2%	76.9%
1246111	Seymour High School	43.5%	73.8%	53.1%	70.6%	55.7%	75.6%	58.0%	71.4%	52.8%	72.7%	50.4%	67.6%	50.3%	75.6%
1266111	Shelton High School	36.8%	70.3%	39.5%	71.3%	43.5%	75.8%	50.1%	72.4%	44.3%	75.3%	47.4%	80.9%	52.1%	79.2%
1286111	Simsbury High School	29.5%	70.3%	26.4%	62.6%	30.6%	77.7%	30.6%	74.4%	28.1%	75.7%	28.5%	76.9%	33.8%	75.6%
1296111	Somers High School	42.0%	69.1%	44.2%	73.8%	35.0%	77.1%	47.9%	79.7%	43.4%	80.4%	31.4%	68.4%	41.2%	80.9%
1316211	Southington High School	49.3%	66.2%	52.9%	69.9%	50.3%	74.3%	46.5%	74.4%	49.5%	74.4%	51.3%	75.6%	50.5%	77.4%
1326211	South Windsor High School	56.2%	74.2%	53.3%	71.1%	51.4%	72.3%	46.1%	74.9%	50.8%	81.5%	46.5%	79.1%	46.9%	77.1%
1346111	Stafford High School	54.6%	71.7%	52.2%	71.2%	34.5%	79.6%	44.3%	72.5%	48.9%	73.1%	42.9%	75.0%	43.8%	69.6%
1350411	Anchor	*	*	*	*	*	*	*	*	*	*	24.4%	*	23.7%	*
1356111	Stamford High School	53.6%	61.7%	51.5%	55.4%	47.6%	57.6%	50.7%	60.3%	51.6%	60.8%	53.2%	62.4%	54.8%	64.3%
1356311	Westhill High School	40.4%	58.0%	44.4%	55.9%	49.1%	59.9%	46.3%	66.8%	44.0%	52.7%	42.6%	65.0%	51.2%	58.1%
1356411	The Acad Info, Tech & Engin.	45.4%	66.1%	60.4%	65.4%	54.0%	64.8%	61.3%	77.0%	53.0%	66.7%	58.2%	75.0%	48.8%	73.2%
1376111	Stonington High School	36.8%	67.6%	35.7%	68.6%	25.0%	60.5%	34.7%	63.6%	27.2%	89.1%	32.6%	79.3%	28.1%	70.0%

Graduating Class		2010	2010	2011	2011	2012	2012	2013	2013	2014	2014	2015	2015	2016	2016
School ID	School Name	% Enrolled in 16 Months	% Earning 24 Credits†	% Enrolled in 16 Months	% Earning 24 Credits†	% Enrolled in 16 Months	% Earning 24 Credits†	% Enrolled in 16 Months	% Earning 24 Credits†	% Enrolled in 16 Months	% Earning 24 Credits†	% Enrolled in 16 Months	% Earning 24 Credits†	% Enrolled in 16 Months	% Earning 24 Credits†
1386111	Stratford High School	43.3%	60.2%	53.3%	65.8%	47.6%	62.5%	49.4%	62.2%	50.4%	67.2%	46.3%	67.3%	50.0%	70.8%
1386211	Bunnell High School	41.2%	70.6%	50.8%	72.0%	49.4%	67.2%	48.8%	70.8%	52.0%	66.7%	58.5%	78.0%	53.9%	72.5%
1396111	Suffield High School	38.9%	67.1%	38.5%	73.4%	35.1%	70.1%	37.7%	66.7%	37.5%	78.2%	38.2%	60.3%	39.2%	66.7%
1406211	Thomaston High School	47.4%	75.6%	53.1%	69.2%	51.8%	55.8%	48.6%	75.0%	57.1%	75.0%	45.0%	85.2%	45.1%	65.2%
1416111	Tourtellotte Memorial HS	38.5%	60.0%	31.8%	66.7%	47.7%	78.6%	34.1%	71.4%	36.3%	65.5%	47.5%	75.9%	31.0%	63.6%
1426111	Tolland High School	45.6%	78.8%	50.0%	71.8%	50.2%	74.3%	49.6%	83.6%	51.9%	73.2%	44.6%	83.7%	57.0%	76.3%
1436111	Torrington High School	42.6%	67.2%	43.6%	72.8%	40.7%	64.4%	43.8%	71.8%	42.5%	64.6%	45.0%	62.5%	41.3%	62.9%
1446111	Trumbull High School	39.3%	75.5%	40.0%	66.8%	34.2%	78.0%	44.8%	76.6%	43.1%	74.6%	38.7%	79.1%	41.8%	83.3%
1466111	Rockville High School	49.1%	68.9%	46.9%	65.8%	53.5%	70.2%	51.9%	65.4%	45.0%	73.5%	46.2%	78.1%	49.4%	73.8%
1486111	Lyman Hall High School	35.4%	53.3%	45.6%	63.4%	53.5%	70.1%	40.4%	60.7%	42.1%	72.5%	48.0%	77.7%	49.3%	70.3%
1486211	Mark T. Sheehan High School	38.6%	64.0%	49.6%	79.5%	49.4%	78.4%	48.4%	81.3%	43.4%	67.4%	44.7%	77.4%	51.3%	80.0%
1516011	Waterbury Arts Magnet (High)	51.9%	60.7%	56.1%	71.9%	65.0%	59.7%	53.3%	69.4%	49.6%	60.0%	62.5%	68.6%	48.1%	61.5%
1516211	Crosby High School	46.7%	59.8%	51.3%	57.9%	47.3%	58.9%	45.7%	53.2%	52.0%	47.7%	46.6%	50.4%	51.7%	47.1%
1516311	Wilby High School	39.1%	42.1%	43.6%	51.0%	41.5%	41.2%	38.7%	39.6%	49.6%	37.8%	41.8%	38.1%	49.3%	40.1%
1516411	John F. Kennedy High School	45.0%	60.7%	56.4%	63.2%	54.8%	60.1%	53.1%	54.9%	46.9%	50.4%	40.3%	49.1%	50.0%	54.1%
1526111	Waterford High School	49.8%	71.0%	49.0%	65.0%	44.6%	66.7%	38.1%	64.0%	53.7%	80.4%	49.3%	74.3%	49.7%	71.3%
1536111	Watertown High School	52.8%	64.0%	48.5%	73.2%	52.5%	72.2%	49.6%	70.2%	49.8%	72.5%	55.9%	67.9%	52.2%	70.3%
1546111	Westbrook High School	40.5%	76.7%	47.2%	76.5%	45.3%	70.6%	33.3%	69.2%	42.3%	60.0%	40.0%	76.7%	29.5%	*
1556111	Conard High School	39.2%	73.4%	42.0%	75.2%	46.8%	73.5%	42.0%	75.0%	41.6%	67.6%	45.9%	66.0%	42.3%	75.0%
1556211	Hall High School	38.1%	71.1%	40.7%	73.6%	38.0%	70.5%	37.8%	79.3%	40.9%	70.2%	37.8%	76.3%	40.2%	79.1%
1566111	West Haven High School	44.4%	60.9%	40.4%	57.5%	50.2%	59.1%	45.8%	66.4%	42.2%	64.2%	49.1%	60.9%	47.1%	53.6%
1576111	Weston High School	15.0%	61.3%	15.1%	82.8%	15.4%	51.7%	17.2%	62.9%	13.6%	58.3%	14.1%	69.6%	12.6%	61.5%
1586111	Staples High School	11.1%	56.8%	12.8%	55.9%	16.4%	52.2%	15.4%	59.2%	12.6%	58.9%	13.6%	61.3%	13.7%	67.7%
1596111	Wethersfield High School	46.6%	77.1%	44.3%	71.9%	51.9%	75.7%	55.7%	67.9%	51.7%	72.7%	53.4%	76.9%	48.3%	71.2%
1616111	Wilton High School	23.6%	64.4%	19.8%	63.3%	18.3%	70.2%	22.2%	75.7%	16.4%	72.9%	17.8%	61.4%	17.6%	67.2%
1636111	Windham High School	56.3%	56.8%	47.8%	62.4%	51.7%	57.7%	52.5%	58.5%	41.3%	43.9%	53.6%	53.3%	45.9%	48.2%
1646111	Windsor High School	47.8%	63.0%	49.2%	62.7%	49.5%	54.2%	48.4%	63.3%	48.5%	58.7%	46.0%	53.1%	50.6%	59.8%
1656111	Windsor Locks High School	46.3%	71.0%	38.1%	73.3%	40.0%	51.9%	40.9%	70.4%	40.2%	58.8%	37.8%	66.7%	43.6%	70.8%
1666111	Wolcott High School	59.1%	75.8%	51.9%	73.2%	59.2%	74.4%	55.5%	74.4%	58.4%	73.4%	52.3%	70.3%	55.8%	81.0%
2016112	Housatonic Valley Regional HS	41.0%	56.1%	19.7%	70.8%	24.8%	66.7%	29.4%	73.3%	26.9%	72.4%	24.1%	66.7%	31.3%	80.6%
2046112	Valley Regional High School	30.2%	71.4%	25.3%	76.3%	29.3%	77.3%	44.2%	65.2%	36.4%	77.1%	27.7%	71.4%	32.7%	77.6%
2056112	Amity Regional High School	28.8%	73.7%	33.6%	76.7%	37.7%	78.0%	36.1%	73.9%	37.6%	83.0%	37.4%	77.5%	38.2%	76.9%



Graduating Class		2010	2010	2011	2011	2012	2012	2013	2013	2014	2014	2015	2015	2016	2016
School ID	School Name	% Enrolled in 16 Months	% Earning 24 Credits†	% Enrolled in 16 Months	% Earning 24 Credits†	% Enrolled in 16 Months	% Earning 24 Credits†	% Enrolled in 16 Months	% Earning 24 Credits†	% Enrolled in 16 Months	% Earning 24 Credits†	% Enrolled in 16 Months	% Earning 24 Credits†	% Enrolled in 16 Months	% Earning 24 Credits†
2066112	Wamogo Regional High School	30.8%	79.2%	51.6%	74.5%	38.1%	71.9%	37.0%	79.4%	46.0%	62.5%	36.5%	61.3%	38.0%	68.4%
2076112	Northwestern Regional HS	46.6%	68.3%	50.8%	68.8%	46.6%	67.1%	42.9%	67.1%	49.5%	73.9%	43.9%	84.5%	47.9%	74.7%
2086112	RHAM High School	51.4%	74.5%	51.5%	80.5%	50.9%	81.7%	40.6%	82.7%	42.3%	84.5%	48.4%	78.4%	43.2%	82.4%
2096112	Joel Barlow High School	21.3%	77.6%	24.1%	72.5%	26.9%	76.2%	19.6%	79.5%	25.8%	76.2%	21.7%	85.5%	23.6%	69.0%
2106112	Lewis S. Mills High School	42.1%	68.3%	47.4%	72.0%	48.0%	73.8%	40.4%	81.6%	42.5%	77.8%	40.8%	72.0%	40.7%	71.4%
2116112	Parish Hill High School	57.1%	75.0%	50.0%	*	47.6%	*	63.9%	56.5%	64.7%	90.9%	50.9%	63.0%	61.5%	*
2120312	Shepaug Valley School	*	*	*	*	*	*	*	*	36.7%	62.1%	37.7%	73.1%	37.7%	65.5%
2126112	Shepaug Valley High School	34.7%	57.7%	29.6%	75.0%	31.3%	65.0%	N/A	N/A	N/A	N/A				
2136112	Coginchaug Regional High Schl	48.3%	80.0%	43.1%	66.1%	44.6%	83.9%	43.4%	64.5%	42.6%	72.7%	40.8%	84.5%	44.8%	65.0%
2146112	Nonnewaug High School	32.5%	75.4%	42.9%	74.4%	33.5%	68.8%	42.6%	75.6%	33.7%	68.6%	40.2%	63.5%	37.4%	65.7%
2156212	Pomperaug Regional High Schl	45.6%	71.8%	38.4%	71.6%	39.2%	73.6%	43.5%	77.6%	34.1%	60.7%	38.4%	77.8%	37.5%	71.8%
2166012	Woodland Regional High Schl	48.7%	66.7%	56.2%	63.0%	48.6%	71.1%	53.1%	79.8%	50.6%	73.9%	46.0%	76.0%	45.0%	75.3%
2176112	Haddam-Killingworth High Schl	50.0%	64.9%	41.4%	77.1%	40.0%	70.8%	38.6%	70.5%	42.7%	75.0%	41.9%	65.7%	41.0%	87.7%
2186112	Lyme-Old Lyme High School	24.5%	79.2%	27.5%	58.3%	35.6%	72.2%	30.6%	87.9%	33.0%	85.7%	29.8%	80.0%	25.3%	88.0%
2196112	E. O. Smith High School	49.6%	73.9%	47.4%	79.7%	52.9%	76.6%	48.4%	77.0%	46.9%	75.4%	47.9%	81.1%	50.4%	84.6%
2415114	Acad Aerospace & Engineering	*	*	*	*	30.0%	*	50.0%	*	46.7%	*	44.2%	*	59.2%	69.0%
2415214	Civic Leadership High School	*	*	*	*	*	*	*	*	44.7%	*	54.5%	*	60.0%	26.7%
2416114	Metro Learn Cent. Global Study	38.8%	66.7%	48.4%	60.9%	54.2%	56.4%	50.6%	61.4%	52.2%	58.3%	48.1%	57.9%	58.1%	63.0%
2416314	Great Path Academy at MCC	*	*	*	*	20.0%	*	*	*	*	*				
2416414	Greater Hartford Acad Arts HS	*	*	*	*	*	*	20.5%	50.0%	18.9%	48.4%	46.2%	45.8%	30.5%	37.9%
2416514	Acad. of Science & Innovation	*	*	*	*	*	*	*	*	55.6%	56.0%	52.5%	52.4%	51.4%	*
2416714	Two Rivers Magnet High School	*	*	*	*	*	*	*	*	*	*			62.2%	54.3%
2456014	Connecticut River Academy	*	*	*	*	*	*	*	*	37.1%	63.6%	41.8%	57.6%	60.8%	66.7%
2456114	Marine Science Magnet HS	*	*	*	*	*	*	*	*	47.8%	*	39.6%	47.6%	60.0%	66.7%
2456214	Three Rivers Middle College	*	*	*	*	*	*	*	N/A	51.6%	*	44.8%	*	41.7%	*
2536014	Arts at Capitol Theater Magnet	*	*	*	*	46.9%	*	58.3%	*	42.4%	*	57.1%	*	54.8%	*
2536114	Quinebaug Middle College	*	*	*	*	37.8%	*	32.1%	*	26.1%	*	50.0%	*	23.5%	*
2686113	Common Ground High School	41.4%	*	45.9%	*	56.7%	*	37.1%	*	41.4%	*	52.6%	55.0%	70.0%	42.9%
2696113	The Bridge Academy	38.7%	*	44.8%	*	38.9%	*	60.6%	40.0%	71.9%	69.6%	86.7%	46.2%	68.8%	40.9%
2726113	Explorations	34.5%	*	*	*	*	*	30.4%	*	*	*	50.0%	*	*	*
2795113	Amistad Academy	*	*	*	*	*	*	23.8%	*	28.3%	*	57.7%	*	70.0%	52.4%
2826013	Stamford Academy	*	*	*	*	30.0%	*	*	*	24.0%	*	21.4%	*	42.9%	*

Graduating Class		2010	2010	2011	2011	2012	2012	2013	2013	2014	2014	2015	2015	2016	2016
School ID	School Name	% Enrolled in 16 Months	% Earning 24 Credits†	% Enrolled in 16 Months	% Earning 24 Credits†	% Enrolled in 16 Months	% Earning 24 Credits†	% Enrolled in 16 Months	% Earning 24 Credits†	% Enrolled in 16 Months	% Earning 24 Credits†	% Enrolled in 16 Months	% Earning 24 Credits†	% Enrolled in 16 Months	% Earning 24 Credits†
2850113	Achievement First Bridgeport	*	*	*	*	*	*	*	*	*	*	60.0%	*	60.0%	*
2880113	Achievement First Hartford	*	*	*	*	*	*	*	*	*	*			61.3%	*
9001116	Bullard-Havens Technical HS	43.6%	46.7%	47.0%	55.8%	45.6%	62.9%	53.4%	55.4%	43.0%	58.1%	54.3%	62.4%	51.9%	65.6%
9001216	Henry Abbott Technical HS	38.8%	48.1%	43.7%	45.5%	35.0%	54.5%	30.8%	75.0%	39.6%	65.5%	39.6%	61.4%	47.9%	58.0%
9001316	H. H. Ellis Technical High Schl	25.4%	59.4%	28.7%	54.5%	26.2%	60.6%	30.1%	47.1%	22.4%	54.2%	27.0%	54.1%	25.8%	41.9%
9001416	Eli Whitney Technical High Schl	34.5%	55.2%	38.0%	47.4%	44.3%	37.3%	33.0%	27.3%	32.4%	38.2%	40.9%	28.9%	28.2%	31.0%
9001516	A. I. Prince Technical High Schl	45.5%	42.6%	47.9%	37.3%	45.5%	43.7%	36.8%	48.2%	50.0%	51.7%	38.2%	52.1%	40.9%	36.1%
9001616	Howell Cheney Technical HS	34.6%	56.8%	32.3%	58.1%	32.1%	46.7%	41.2%	58.8%	40.6%	61.9%	29.1%	53.5%	30.8%	40.0%
9001716	H. C. Wilcox Technical High Schl	37.2%	67.2%	34.5%	57.4%	45.0%	65.6%	35.6%	66.7%	36.0%	66.1%	36.0%	60.9%	40.1%	65.8%
9001816	Vinal Technical High School	27.4%	58.8%	19.2%	29.2%	25.6%	56.3%	34.6%	65.2%	31.9%	48.8%	21.3%	59.4%	29.1%	55.8%
9001916	E. C. Goodwin Technical HS	42.2%	37.1%	33.0%	42.4%	37.2%	51.1%	34.7%	46.5%	26.8%	45.9%	36.4%	43.8%	38.4%	35.7%
9002016	Norwich Technical High School	38.3%	41.7%	34.5%	50.0%	25.0%	56.8%	30.7%	46.8%	27.2%	56.1%	35.4%	43.9%	30.9%	50.0%
9002216	Oliver Wolcott Technical HS	32.2%	64.4%	36.5%	46.2%	30.6%	57.1%	32.1%	50.9%	36.4%	60.8%	30.7%	53.2%	29.7%	46.5%
9002316	W. F. Kaynor Technical HS	37.6%	54.8%	40.4%	55.9%	53.5%	66.3%	47.3%	70.8%	48.3%	64.4%	51.5%	76.7%	45.4%	73.4%
9002416	Windham Technical High Schl	41.4%	63.0%	35.0%	61.9%	46.3%	66.1%	41.2%	66.7%	37.5%	68.8%	34.1%	64.4%	31.8%	63.4%
9002516	Emmett O'Brien Technical HS	21.3%	56.5%	40.7%	50.0%	36.9%	43.8%	30.4%	62.9%	35.0%	48.8%	32.5%	46.3%	42.8%	59.3%
9002616	Platt Technical High School	32.2%	61.2%	29.3%	51.8%	42.0%	65.2%	34.1%	65.7%	34.6%	74.6%	36.5%	65.8%	37.3%	68.1%
9002716	Ella T. Grasso Technical HS	43.2%	43.9%	33.3%	47.5%	31.5%	41.3%	37.5%	61.1%	36.6%	51.1%	28.7%	37.9%	31.3%	39.0%
9016122	Norwich Free Academy	50.8%	65.1%	49.8%	55.4%	49.0%	62.3%	49.7%	65.7%	43.9%	62.3%	54.9%	61.4%	52.2%	58.9%
9026122	The Gilbert School	56.1%	43.3%	49.2%	75.9%	42.9%	66.7%	58.6%	61.0%	46.8%	47.2%	35.3%	56.7%	33.7%	66.7%
9036122	The Woodstock Academy	50.9%	65.0%	45.7%	69.0%	49.5%	68.4%	43.9%	75.6%	44.7%	79.8%	40.4%	73.9%	47.9%	71.1%

\* Data suppressed to protect confidentiality

† This row is a subset of the column immediately preceding it.

Source: P20WIN data and SDE calculations

Table 7: Remediation by School at Connecticut State University System and Community Colleges

Graduating Class		2010	2010	2011	2011	2012	2012	2013	2013	2014	2014	2015	2015	2016	2016
School ID	School Name	% Enrolled in 16 Months	% Enrolled in Remediation†	% Enrolled in 16 Months	% Enrolled in Remediation†	% Enrolled in 16 Months	% Enrolled in Remediation†	% Enrolled in 16 Months	% Enrolled in Remediation†	% Enrolled in 16 Months	% Enrolled in Remediation†	% Enrolled in 16 Months	% Enrolled in Remediation†	% Enrolled in 16 Months	% Enrolled in Remediation†
0026111	Ansonia High School	36.6%	69.5%	31.7%	62.2%	45.1%	49.4%	42.0%	58.9%	38.3%	66.7%	48.2%	50.0%	45.8%	53.7%
0046111	Avon High School	16.4%	28.9%	20.1%	28.0%	20.4%	31.6%	22.1%	28.1%	17.3%	21.3%	19.6%	21.3%	22.2%	17.0%
0076111	Berlin High School	33.6%	40.5%	41.9%	36.5%	41.3%	35.6%	42.2%	40.4%	45.8%	30.8%	37.1%	29.3%	45.4%	25.7%
0096111	Bethel High School	37.4%	32.6%	36.1%	20.9%	41.8%	24.7%	33.3%	26.3%	34.3%	32.5%	36.2%	26.0%	46.5%	24.8%
0116111	Bloomfield High School	41.5%	63.9%	41.4%	63.8%	43.5%	64.2%	47.3%	63.9%	46.3%	54.4%	44.6%	31.5%	41.2%	44.9%
0116311	Global Experience Magnet School	*	*	*	*	*	*	34.4%	*	48.1%	*	56.0%	*	56.0%	*
0126111	Bolton High School	40.9%	44.4%	45.6%	25.8%	39.4%	34.6%	47.5%	31.6%	44.8%	18.6%	45.2%	21.2%	34.1%	21.4%
0146111	Branford High School	27.4%	46.0%	32.0%	59.3%	34.7%	52.9%	28.5%	45.2%	31.0%	43.7%	33.5%	44.6%	34.6%	32.9%
0150611	Biotech, Resrch & Zoo Studies	*	*	*	*	*	*	*	*	*	*	*	*	43.4%	45.5%
0150811	Aero/Hydro, Engin & Physical Sci	*	*	*	*	*	*	*	*	*	*	*	*	49.2%	51.7%
0151511	IT & Software Engineering Magnet	*	*	*	*	*	*	*	*	*	*	*	*	50.0%	35.3%
0156111	Bassick High School	33.2%	81.5%	30.2%	86.8%	37.7%	80.0%	39.2%	83.1%	28.3%	75.0%	46.1%	83.1%	43.8%	71.9%
0156211	Central High School	37.9%	74.0%	40.7%	62.1%	35.7%	63.4%	44.6%	68.0%	41.3%	67.5%	50.5%	63.9%	46.1%	64.7%
0156311	Warren Harding High School	31.3%	89.5%	35.8%	75.3%	36.1%	85.7%	29.6%	76.6%	34.6%	77.5%	36.7%	66.2%	37.0%	69.0%
0176111	Bristol Central High School	40.3%	41.7%	39.1%	44.2%	35.6%	48.6%	43.0%	40.2%	32.1%	37.0%	37.7%	38.8%	38.5%	46.5%
0176211	Bristol Eastern High School	41.9%	49.1%	44.8%	56.0%	43.5%	46.3%	43.2%	46.5%	42.4%	41.2%	46.0%	44.5%	38.5%	55.6%
0186111	Brookfield High School	30.1%	41.0%	32.4%	24.1%	36.1%	19.8%	28.3%	14.9%	30.8%	17.1%	31.1%	20.0%	29.2%	14.8%
0236111	Canton High School	29.3%	28.2%	27.8%	34.4%	25.9%	20.0%	23.7%	46.4%	30.6%	34.1%	30.2%	31.6%	26.5%	25.9%
0256111	Cheshire High School	23.8%	36.6%	33.1%	35.9%	30.7%	32.8%	28.2%	27.0%	23.8%	24.1%	27.1%	15.7%	26.5%	24.7%
0276111	The Morgan School	34.3%	39.6%	37.6%	35.8%	30.5%	30.6%	44.6%	39.7%	44.5%	31.6%	36.4%	36.5%	36.9%	39.6%
0286111	Bacon Academy	46.6%	28.4%	43.6%	40.0%	43.7%	30.8%	43.2%	36.5%	42.9%	35.2%	33.2%	21.1%	43.3%	35.2%
0326111	Coventry High School	39.6%	38.6%	37.7%	38.2%	46.4%	35.9%	33.8%	40.9%	46.1%	28.8%	38.9%	31.0%	48.7%	41.1%
0336111	Cromwell High School	42.7%	44.3%	43.4%	42.0%	40.9%	30.4%	34.6%	34.8%	45.4%	35.6%	41.5%	27.5%	43.0%	24.1%
0346111	Danbury High School	43.5%	45.1%	46.8%	39.5%	50.3%	36.2%	43.9%	38.0%	42.5%	39.6%	46.4%	32.8%	45.1%	32.4%
0346211	Alternative Center for Excellence	*	*	*	*	*	*	*	*	30.0%	*	29.6%	*	52.2%	*
0356111	Darien High School	12.8%	*	8.9%	*	9.2%	25.0%	5.6%	*	12.3%	15.0%	6.8%	*	8.4%	*
0376111	Derby High School	30.2%	57.7%	37.8%	47.1%	40.0%	58.3%	51.6%	78.8%	45.5%	42.2%	40.9%	50.0%	36.6%	60.0%
0406111	East Granby High School	37.0%	*	29.3%	*	35.0%	*	22.1%	*	45.0%	*	30.6%	*	33.8%	*
0416111	Nathan Hale-Ray High School	49.1%	21.2%	33.3%	31.0%	50.0%	28.3%	40.0%	28.9%	42.3%	39.0%	48.0%	35.4%	36.7%	20.7%
0426111	East Hampton High School	36.4%	41.2%	49.6%	39.1%	39.9%	29.5%	45.2%	24.6%	48.7%	31.6%	42.9%	17.6%	35.9%	23.1%

Graduating Class		2010	2010	2011	2011	2012	2012	2013	2013	2014	2014	2015	2015	2016	2016
School ID	School Name	% Enrolled in 16 Months	% Enrolled in Remediation†	% Enrolled in 16 Months	% Enrolled in Remediation†	% Enrolled in 16 Months	% Enrolled in Remediation†	% Enrolled in 16 Months	% Enrolled in Remediation†	% Enrolled in 16 Months	% Enrolled in Remediation†	% Enrolled in 16 Months	% Enrolled in Remediation†	% Enrolled in 16 Months	% Enrolled in Remediation†
0436211	East Hartford High School	45.9%	61.7%	48.3%	54.6%	48.7%	55.9%	46.5%	53.8%	44.2%	54.2%	50.1%	44.7%	41.8%	45.6%
0436311	Connecticut IB Academy	*	*	*	*	17.1%	*	43.2%	*	44.4%	*	27.9%	*	40.9%	*
0436411	Synergy Alternative Program	*	*	*	*	*	*	16.3%	*	15.1%	*	15.9%	*	15.8%	*
0446111	East Haven High School	31.2%	58.3%	44.7%	60.0%	53.3%	55.6%	42.2%	61.7%	43.4%	58.9%	40.7%	48.6%	47.8%	50.0%
0456111	East Lyme High School	26.2%	40.5%	32.0%	27.5%	29.4%	38.1%	25.6%	39.5%	32.4%	35.7%	35.6%	24.7%	24.6%	18.6%
0476111	East Windsor High School	45.5%	33.3%	43.8%	48.6%	40.7%	48.5%	24.4%	45.0%	35.6%	41.7%	33.3%	37.0%	32.4%	34.8%
0486111	Ellington High School	47.0%	33.7%	45.0%	19.5%	38.7%	27.8%	48.1%	25.0%	42.7%	29.3%	41.4%	29.8%	41.7%	30.7%
0496111	Enfield High School	45.5%	51.1%	46.2%	37.0%	38.1%	52.2%	44.1%	53.7%	41.1%	47.8%	37.6%	37.7%	44.1%	54.7%
0496211	Enrico Fermi High School	46.0%	55.7%	44.0%	57.5%	42.3%	39.7%	40.2%	35.4%	40.2%	50.0%	46.4%	43.3%	43.2%	33.7%
0516011	Fairfield Ludlowe High School	17.4%	34.4%	17.5%	32.2%	18.8%	39.4%	22.0%	39.5%	18.4%	41.5%	17.5%	36.9%	17.7%	17.5%
0516211	Fairfield Warde High School	22.3%	49.3%	24.6%	40.8%	21.7%	54.3%	26.9%	36.6%	20.7%	40.3%	19.1%	48.3%	20.2%	32.4%
0526111	Farmington High School	31.2%	47.7%	28.8%	35.9%	29.1%	38.1%	34.0%	34.0%	24.7%	24.1%	24.3%	30.8%	28.7%	38.5%
0546111	Glastonbury High School	32.9%	21.7%	32.3%	23.3%	25.5%	19.0%	29.3%	15.7%	23.0%	16.3%	25.2%	15.6%	27.3%	25.2%
0566111	Granby Memorial High School	22.9%	24.4%	25.5%	18.8%	28.6%	29.6%	27.5%	25.0%	28.1%	21.4%	26.6%	33.3%	20.3%	26.3%
0576111	Greenwich High School	11.1%	54.7%	16.3%	49.5%	13.7%	50.6%	18.0%	50.4%	16.4%	42.6%	15.3%	40.4%	13.1%	43.6%
0586211	Griswold High School	42.9%	45.2%	45.9%	47.4%	41.7%	35.7%	41.9%	40.0%	47.6%	41.4%	41.5%	32.1%	41.7%	43.6%
0596111	Robert E. Fitch High School	35.8%	47.0%	38.8%	38.5%	29.8%	47.1%	34.8%	38.3%	30.4%	39.3%	29.9%	34.7%	30.2%	54.3%
0606111	Guilford High School	18.6%	44.2%	23.3%	36.7%	20.6%	20.7%	24.3%	34.4%	21.6%	24.1%	21.3%	30.4%	25.7%	37.1%
0626111	Hamden High School	25.8%	64.5%	35.9%	52.2%	44.4%	54.2%	41.3%	64.4%	37.3%	46.3%	39.6%	50.0%	38.2%	51.6%
0641111	Kinsella Magnet Performing Arts	*	*	*	*	*	*	*	*	*	*	*	*	42.4%	*
0643611	Global Communications Academy	*	*	*	*	*	*	*	*	*	*	*	*	46.2%	*
0643911	Capital Comm College Magnet	*	*	*	*	*	*	*	*	*	*	*	*	50.0%	*
0645411	Hartford Magnet Trinity College	*	*	*	*	*	*	*	*	*	*	43.8%	37.5%	48.7%	48.6%
0646011	Culinary Arts Academy-Weaver	*	*	*	*	15.9%	*	28.3%	*	20.0%	*	21.4%	*	35.3%	*
0646311	Weaver High School	31.7%	*	*	75.9%	*	*	N/A	N/A	N/A	N/A				
0646411	Classical Magnet School	20.0%	*	38.6%	*	39.0%	59.4%	50.0%	57.1%	46.9%	39.5%	46.8%	29.7%	46.8%	45.9%
0646511	Sport & Medical Sciences Acad	52.6%	45.0%	39.2%	52.6%	47.5%	40.4%	55.7%	46.9%	55.8%	47.2%	46.7%	53.5%	55.7%	38.8%
0646611	Pathways Acad Tech & Design	53.2%	42.9%	46.5%	62.5%	35.0%	64.3%	50.0%	72.7%	37.9%	52.0%	51.6%	42.4%	43.2%	42.1%
0646711	Univ HS of Science/Engineering	34.5%	*	32.9%	*	28.6%	45.5%	45.2%	23.8%	36.8%	28.6%	46.7%	26.2%	36.3%	27.3%
0646911	Capital Preparatory Magnet	*	*	37.0%	*	*	*	48.5%	*	45.3%	50.0%	43.6%	*	37.5%	*
0647111	Bulkeley High School	*	*	*	*	4.0%	*	36.6%	67.8%	28.9%	65.9%	36.0%	74.1%	32.9%	56.9%
0647211	HPHS Engineering & Green Tech	*	*	*	*	15.6%	*	32.2%	79.3%	42.9%	66.7%	34.1%	60.0%	24.6%	*

Trends in Enrollment, Credit Attainment, and Remediation  
at Connecticut Public Universities and Community Colleges:  
Results from P20WIN for the Graduating Classes of 2010 through 2016

Graduating Class		2010	2010	2011	2011	2012	2012	2013	2013	2014	2014	2015	2015	2016	2016
School ID	School Name	% Enrolled in 16 Months	% Enrolled in Remediation†	% Enrolled in 16 Months	% Enrolled in Remediation†	% Enrolled in 16 Months	% Enrolled in Remediation†	% Enrolled in 16 Months	% Enrolled in Remediation†	% Enrolled in 16 Months	% Enrolled in Remediation†	% Enrolled in 16 Months	% Enrolled in Remediation†	% Enrolled in 16 Months	% Enrolled in Remediation†
0647411	HPHS Law and Government Acad	*	*	9.8%	*	*	*	40.0%	68.2%	35.8%	78.9%	42.0%	47.1%	33.8%	59.3%
0647511	HPHS Nursing & Health Sciences	*	*	10.2%	*	*	*	48.1%	76.5%	47.9%	78.3%	31.8%	60.7%	34.2%	48.1%
0647611	High School, Inc.	*	*	*	*	*	*	46.3%	78.4%	22.6%	*	32.4%	68.2%	51.6%	59.4%
0647711	Journalism and Media Academy	*	*	*	*	*	*	46.2%	91.7%	28.1%	*	47.5%	*	*	*
0647911	Great Path Academy at MCC	*	*	*	*	*	*	54.5%	38.9%	53.7%	72.4%	58.3%	34.3%	47.5%	35.7%
0696111	Killingly High School	*	*	*	*	8.4%	*	41.6%	54.2%	39.1%	50.0%	39.4%	39.3%	42.4%	40.3%
0716211	Lyman Memorial High School	35.5%	46.5%	39.5%	37.9%	44.4%	28.8%	40.9%	26.7%	38.0%	37.1%	42.2%	31.6%	33.3%	36.4%
0726111	Ledyard High School	38.6%	56.0%	37.7%	46.3%	40.4%	38.5%	39.2%	32.5%	36.4%	46.3%	40.0%	39.8%	35.2%	29.3%
0746111	Litchfield High School	26.4%	42.9%	23.0%	*	27.5%	*	29.9%	30.8%	31.3%	*	28.2%	40.0%	27.7%	39.1%
0766111	Daniel Hand High School	14.7%	31.0%	13.0%	25.0%	18.1%	22.0%	17.9%	24.6%	18.2%	22.8%	21.0%	15.2%	17.8%	20.8%
0776111	Manchester High School	46.0%	47.0%	47.6%	55.2%	46.0%	52.5%	50.0%	49.0%	41.3%	45.6%	44.6%	49.1%	46.4%	39.9%
0806111	Francis T. Maloney High School	37.2%	61.6%	37.7%	52.6%	46.2%	59.8%	40.5%	55.2%	33.7%	50.6%	38.8%	55.9%	34.8%	46.8%
0806211	Orville H. Platt High School	37.2%	69.1%	40.8%	61.8%	37.2%	66.7%	42.7%	57.0%	39.3%	53.7%	42.6%	64.4%	41.6%	59.6%
0836211	Middletown High School	41.7%	53.3%	45.5%	53.6%	35.6%	63.4%	38.7%	43.1%	40.0%	50.8%	44.4%	44.0%	38.4%	46.2%
0840311	The Academy	*	*	*	*	*	*	*	*	*	*	*	*	31.8%	*
0846211	Jonathan Law High School	34.2%	55.7%	34.2%	45.6%	33.3%	51.3%	41.7%	49.0%	33.3%	43.5%	42.4%	43.2%	43.9%	41.0%
0846311	Joseph A. Foran High School	40.0%	47.1%	35.4%	51.7%	37.0%	51.7%	43.6%	40.4%	37.0%	23.1%	36.7%	32.1%	37.2%	28.6%
0856111	Masuk High School	30.3%	42.2%	27.1%	36.7%	27.2%	23.9%	31.5%	26.0%	33.0%	27.8%	29.2%	19.8%	29.5%	17.3%
0866111	Montville High School	50.8%	38.6%	42.8%	37.8%	42.0%	51.9%	34.8%	41.8%	35.3%	41.7%	41.2%	52.9%	46.9%	41.3%
0886111	Naugatuck High School	40.7%	48.1%	47.3%	52.7%	50.3%	48.8%	47.8%	56.2%	44.6%	46.5%	45.1%	50.7%	44.5%	49.2%
0896111	New Britain High School	44.4%	68.0%	50.2%	61.6%	49.7%	55.5%	41.4%	62.9%	46.9%	55.6%	45.3%	60.0%	40.1%	60.1%
0906111	New Canaan High School	9.0%	30.8%	10.1%	32.3%	10.8%	17.1%	8.3%	32.1%	10.3%	18.8%	6.8%	*	9.3%	*
0916111	New Fairfield High School	33.5%	41.9%	33.8%	33.8%	32.6%	17.1%	38.3%	16.8%	37.6%	21.6%	38.9%	14.6%	30.4%	14.3%
0931711	Eng - Science Univ Magnet School	*	*	*	*	*	*	*	*	*	*	45.5%	52.0%	42.6%	60.9%
0936011	Metropolitan Business Academy	48.3%	*	40.6%	*	54.1%	90.0%	52.5%	71.4%	49.4%	62.8%	54.4%	53.5%	53.2%	68.0%
0936111	Wilbur Cross High School	30.5%	74.5%	36.8%	78.3%	38.3%	74.6%	33.0%	65.3%	38.2%	65.9%	37.4%	54.5%	40.1%	64.2%
0936211	James Hillhouse High School	37.7%	70.2%	50.8%	71.4%	42.4%	79.1%	44.0%	81.0%	42.4%	81.4%	45.8%	58.7%	44.1%	67.6%
0936311	Hill Regional Career High School	35.9%	60.0%	44.0%	68.2%	43.6%	68.9%	50.3%	61.1%	48.1%	56.0%	47.6%	38.5%	46.5%	35.6%
0936411	Cooperative High School	37.1%	86.1%	34.0%	56.3%	48.4%	65.0%	43.8%	67.1%	44.0%	58.6%	50.7%	44.3%	41.2%	48.2%
0936611	High School in The Community	33.3%	72.7%	54.5%	66.7%	44.4%	75.0%	40.9%	*	44.4%	*	45.7%	*	54.5%	*
0936711	Sound School	33.3%	*	27.3%	*	52.5%	81.0%	51.4%	76.3%	45.0%	25.0%	42.2%	33.3%	56.9%	56.1%
0936811	Cortlandt VR Creed Health & Sport	36.1%	*	33.3%	*	38.1%	*	19.4%	*	45.7%	*	52.2%	37.5%	30.8%	*

Graduating Class		2010	2010	2011	2011	2012	2012	2013	2013	2014	2014	2015	2015	2016	2016
School ID	School Name	% Enrolled in 16 Months	% Enrolled in Remediation†	% Enrolled in 16 Months	% Enrolled in Remediation†	% Enrolled in 16 Months	% Enrolled in Remediation†	% Enrolled in 16 Months	% Enrolled in Remediation†	% Enrolled in 16 Months	% Enrolled in Remediation†	% Enrolled in 16 Months	% Enrolled in Remediation†	% Enrolled in 16 Months	% Enrolled in Remediation†
0937011	New Haven Academy	38.9%	*	40.0%	70.0%	57.6%	*	51.8%	62.1%	42.9%	63.0%	56.3%	29.6%	35.4%	*
0939111	Riverside Education Academy	*	*	*	*	*	*	44.0%	*	36.0%	*	23.1%	*	28.6%	*
0946111	Newington High School	45.0%	46.1%	48.4%	39.5%	47.1%	35.5%	41.8%	35.9%	48.3%	39.3%	42.6%	36.9%	41.5%	34.7%
0956111	New London High School	36.2%	70.9%	43.5%	59.7%	48.2%	47.5%	38.9%	60.0%	38.3%	52.2%	34.9%	43.1%	34.8%	50.7%
0966111	New Milford High School	38.4%	24.5%	33.5%	16.8%	41.8%	18.9%	40.7%	16.8%	36.0%	18.3%	40.7%	25.0%	29.1%	17.8%
0976111	Newtown High School	25.2%	39.0%	27.6%	28.2%	21.9%	27.6%	27.7%	19.2%	22.2%	17.4%	20.7%	26.4%	23.0%	15.6%
0996111	North Branford High School	38.1%	50.0%	41.7%	43.6%	39.1%	44.1%	46.3%	40.8%	37.7%	36.5%	49.0%	35.1%	50.0%	40.3%
1016111	North Haven High School	36.5%	53.7%	44.4%	49.2%	38.1%	42.7%	37.1%	47.1%	34.1%	32.0%	37.1%	40.6%	33.3%	40.5%
1026111	Wheeler High School	30.8%	*	34.4%	33.3%	29.2%	*	34.0%	*	25.0%	*	19.6%	*	21.4%	*
1036111	Norwalk High School	43.4%	57.7%	45.4%	64.1%	45.6%	52.6%	44.9%	50.0%	49.0%	55.2%	44.3%	48.1%	46.4%	46.6%
1036211	Brien McMahon High School	44.2%	64.4%	46.7%	63.3%	43.5%	55.6%	48.6%	58.7%	43.9%	44.7%	40.7%	52.0%	45.5%	49.1%
1036311	Norwalk Pathways Acad @ Briggs	37.1%	*	*	*	*	*	*	*	48.3%	*	*	*	23.1%	*
1066111	Old Saybrook Senior High School	30.3%	30.6%	24.8%	*	22.5%	*	36.1%	31.3%	21.1%	51.9%	19.2%	*	28.5%	40.0%
1086011	Oxford High School	21.4%	37.5%	38.3%	31.6%	40.6%	41.1%	43.3%	43.1%	47.0%	31.6%	28.1%	25.0%	36.1%	27.1%
1096111	Plainfield High School	47.0%	51.6%	38.8%	48.1%	41.6%	51.9%	34.1%	34.4%	48.0%	46.6%	41.7%	35.0%	36.9%	24.2%
1106111	Plainville High School	51.2%	55.8%	48.8%	48.0%	48.7%	38.9%	55.1%	52.4%	50.0%	43.8%	56.5%	42.9%	44.3%	40.2%
1116111	Terryville High School	35.5%	65.9%	40.8%	47.2%	39.7%	46.0%	43.5%	50.0%	44.3%	44.4%	48.6%	38.5%	42.4%	50.0%
1136111	Portland High School	38.6%	35.3%	39.5%	46.9%	38.8%	36.4%	39.0%	25.0%	41.7%	37.2%	42.5%	27.0%	36.8%	31.3%
1166111	Putnam High School	50.0%	46.2%	32.3%	45.0%	36.7%	59.1%	36.7%	41.4%	16.9%	*	36.8%	52.4%	46.2%	36.7%
1186111	Ridgefield High School	12.4%	15.1%	12.8%	22.2%	12.7%	21.8%	13.9%	*	12.1%	12.7%	12.8%	*	10.2%	*
1196111	Rocky Hill High School	40.8%	48.3%	45.2%	42.7%	44.6%	44.8%	41.8%	36.2%	37.3%	40.9%	48.9%	25.3%	44.0%	31.1%
1246111	Seymour High School	36.4%	50.7%	41.3%	39.4%	52.1%	65.8%	51.0%	52.5%	48.0%	36.7%	46.7%	47.6%	42.3%	46.4%
1266111	Shelton High School	32.0%	46.0%	32.6%	42.4%	35.0%	44.1%	43.1%	40.3%	38.5%	35.1%	38.4%	18.6%	43.3%	29.8%
1286111	Simsbury High School	17.5%	28.6%	19.1%	22.7%	18.2%	16.7%	21.3%	32.1%	16.8%	29.7%	20.5%	28.0%	20.7%	23.3%
1296111	Somers High School	38.9%	45.1%	37.0%	23.5%	29.2%	30.0%	39.6%	19.3%	37.2%	43.8%	24.0%	37.9%	32.5%	27.0%
1316211	Southington High School	42.5%	43.3%	44.6%	44.2%	44.4%	35.9%	39.0%	38.9%	40.4%	32.8%	44.0%	30.8%	38.5%	30.7%
1326211	South Windsor High School	44.1%	25.6%	41.7%	29.1%	38.8%	26.8%	35.1%	19.7%	37.2%	28.5%	37.4%	23.6%	32.6%	18.0%
1346111	Stafford High School	46.4%	33.3%	47.8%	31.5%	31.7%	26.7%	39.1%	26.7%	40.9%	37.5%	34.5%	37.9%	40.0%	26.2%
1350411	Anchor	*	*	*	*	*	*	*	*	*	*	24.4%	*	23.7%	*
1356111	Stamford High School	42.4%	66.3%	43.7%	63.0%	40.6%	68.1%	43.6%	66.5%	43.6%	50.5%	45.6%	56.7%	44.0%	56.6%
1356311	Westhill High School	34.5%	59.4%	41.1%	66.1%	40.8%	65.5%	41.3%	62.3%	39.8%	62.2%	34.9%	54.8%	42.7%	55.9%
1356411	The Acad Info, Tech & Engineering	42.3%	56.4%	52.2%	54.3%	44.8%	43.8%	50.3%	35.4%	43.3%	33.8%	48.1%	44.7%	40.5%	39.7%

Graduating Class		2010	2010	2011	2011	2012	2012	2013	2013	2014	2014	2015	2015	2016	2016
School ID	School Name	% Enrolled in 16 Months	% Enrolled in Remediation†	% Enrolled in 16 Months	% Enrolled in Remediation†	% Enrolled in 16 Months	% Enrolled in Remediation†	% Enrolled in 16 Months	% Enrolled in Remediation†	% Enrolled in 16 Months	% Enrolled in Remediation†	% Enrolled in 16 Months	% Enrolled in Remediation†	% Enrolled in 16 Months	% Enrolled in Remediation†
1376111	Stonington High School	27.6%	51.0%	24.5%	20.8%	18.0%	38.7%	27.9%	32.1%	17.2%	31.0%	26.4%	31.9%	20.8%	29.7%
1386111	Stratford High School	39.9%	54.7%	52.3%	61.6%	43.3%	58.7%	46.1%	59.5%	43.4%	50.0%	39.3%	53.1%	44.2%	51.0%
1386211	Bunnell High School	39.2%	49.2%	45.4%	44.8%	45.6%	46.6%	41.6%	44.4%	48.0%	46.2%	52.7%	36.2%	49.2%	42.5%
1396111	Suffield High School	32.0%	41.5%	32.7%	31.3%	26.7%	45.1%	26.6%	29.1%	31.7%	30.3%	33.3%	30.9%	30.7%	32.8%
1406211	Thomaston High School	41.1%	41.0%	51.0%	54.0%	48.2%	50.0%	41.9%	48.4%	42.9%	63.3%	38.3%	34.8%	37.3%	*
1416111	Tourtellotte Memorial HS	36.3%	54.5%	27.1%	47.8%	39.8%	37.1%	30.5%	48.0%	32.5%	30.8%	41.0%	28.0%	26.8%	*
1426111	Tolland High School	34.2%	29.5%	37.7%	28.9%	40.4%	33.0%	37.4%	18.5%	42.6%	21.7%	31.1%	11.7%	48.0%	12.5%
1436111	Torrington High School	35.3%	50.0%	39.0%	40.2%	34.3%	56.5%	37.5%	56.4%	37.8%	37.5%	39.4%	56.0%	36.6%	58.1%
1446111	Trumbull High School	28.4%	37.2%	30.3%	29.1%	24.8%	27.3%	35.8%	29.7%	34.0%	23.5%	30.2%	25.5%	31.2%	21.8%
1466111	Rockville High School	39.8%	43.9%	39.9%	32.0%	47.3%	40.2%	45.1%	38.7%	37.8%	40.0%	36.5%	32.9%	39.5%	26.6%
1486111	Lyman Hall High School	31.5%	56.3%	40.4%	54.1%	48.7%	42.0%	37.4%	57.6%	38.0%	40.2%	41.3%	37.5%	41.8%	41.9%
1486211	Mark T. Sheehan High School	32.7%	42.5%	44.7%	35.6%	45.1%	32.1%	42.1%	32.3%	38.8%	34.1%	39.4%	20.7%	44.2%	32.3%
1516011	Waterbury Arts Magnet (High)	46.3%	72.0%	52.6%	61.7%	62.1%	50.0%	50.0%	65.2%	44.6%	55.6%	54.5%	45.9%	38.9%	38.1%
1516211	Crosby High School	42.4%	68.0%	44.3%	68.6%	43.8%	76.8%	43.2%	71.4%	46.6%	72.7%	44.8%	58.5%	47.0%	62.6%
1516311	Wilby High School	35.4%	74.4%	41.0%	64.6%	39.0%	81.3%	35.2%	73.3%	46.1%	71.2%	40.1%	74.3%	47.5%	75.8%
1516411	John F. Kennedy High School	36.9%	64.1%	46.7%	71.1%	43.3%	62.4%	49.7%	69.2%	42.0%	69.1%	38.2%	60.0%	43.5%	63.8%
1526111	Waterford High School	36.7%	48.1%	37.1%	44.1%	35.6%	26.6%	30.5%	39.1%	43.2%	34.1%	37.1%	40.8%	39.4%	42.0%
1536111	Watertown High School	44.9%	60.8%	42.0%	36.1%	44.7%	45.9%	41.6%	51.9%	42.0%	50.0%	50.3%	48.0%	45.6%	37.9%
1546111	Westbrook High School	27.0%	*	36.1%	*	34.7%	46.2%	24.4%	*	38.0%	48.1%	32.0%	25.0%	27.9%	*
1556111	Conard High School	31.8%	46.0%	31.6%	39.8%	34.4%	45.6%	29.8%	36.9%	29.3%	57.0%	36.1%	39.8%	29.9%	38.8%
1556211	Hall High School	27.1%	49.1%	27.9%	44.0%	26.8%	36.9%	25.4%	44.7%	26.0%	36.5%	23.6%	24.4%	25.7%	32.6%
1566111	West Haven High School	41.6%	66.4%	38.6%	60.9%	46.5%	65.2%	44.0%	59.4%	40.6%	48.5%	47.1%	56.2%	43.7%	58.3%
1576111	Weston High School	9.2%	*	8.9%	*	10.6%	*	12.3%	*	7.4%	*	9.8%	*	8.7%	*
1586111	Staples High School	8.3%	48.5%	9.3%	*	11.9%	*	11.5%	24.5%	9.5%	16.7%	9.2%	16.7%	8.2%	*
1596111	Wethersfield High School	39.5%	37.8%	37.0%	43.0%	39.3%	38.7%	43.5%	27.1%	41.4%	37.5%	44.8%	30.8%	37.1%	24.1%
1616111	Wilton High School	15.9%	*	14.2%	20.9%	10.9%	*	13.3%	*	10.6%	*	12.1%	23.1%	13.1%	*
1636111	Windham High School	47.2%	55.9%	40.4%	50.0%	46.4%	57.1%	46.4%	44.6%	37.0%	62.7%	50.9%	50.9%	40.2%	42.9%
1646111	Windsor High School	43.1%	50.0%	41.8%	53.8%	42.6%	45.2%	42.4%	58.1%	45.1%	49.6%	41.4%	50.4%	46.1%	34.2%
1656111	Windsor Locks High School	41.8%	44.6%	33.9%	52.5%	34.1%	50.0%	34.8%	37.0%	35.4%	55.6%	29.7%	42.4%	36.4%	32.5%
1666111	Wolcott High School	50.7%	46.6%	42.6%	48.9%	48.3%	39.2%	48.3%	39.2%	50.8%	33.1%	46.6%	24.7%	44.7%	38.7%
2016112	Housatonic Valley Regional HS	32.0%	62.5%	16.4%	*	18.8%	*	19.6%	45.0%	23.1%	48.0%	20.7%	*	29.3%	41.4%
2046112	Valley Regional High School	25.9%	36.1%	18.0%	44.4%	23.3%	25.7%	34.0%	34.0%	31.1%	41.5%	22.0%	25.6%	23.3%	45.7%

Graduating Class		2010	2010	2011	2011	2012	2012	2013	2013	2014	2014	2015	2015	2016	2016
School ID	School Name	% Enrolled in 16 Months	% Enrolled in Remediation†	% Enrolled in 16 Months	% Enrolled in Remediation†	% Enrolled in 16 Months	% Enrolled in Remediation†	% Enrolled in 16 Months	% Enrolled in Remediation†	% Enrolled in 16 Months	% Enrolled in Remediation†	% Enrolled in 16 Months	% Enrolled in Remediation†	% Enrolled in 16 Months	% Enrolled in Remediation†
2056112	Amity Regional High School	21.2%	29.8%	24.7%	31.6%	29.4%	36.3%	25.9%	35.4%	28.5%	22.4%	29.7%	14.2%	27.3%	21.9%
2066112	Wamogo Regional High School	26.9%	47.6%	40.7%	40.5%	32.1%	40.7%	31.5%	48.3%	40.2%	54.3%	28.2%	58.3%	33.0%	51.5%
2076112	Northwestern Regional HS	34.7%	39.3%	41.0%	40.0%	35.8%	42.9%	36.5%	35.5%	39.8%	37.8%	38.6%	49.0%	41.2%	51.5%
2086112	RHAM High School	39.3%	26.2%	43.2%	22.2%	40.1%	22.3%	27.7%	17.3%	32.5%	19.1%	34.5%	11.2%	35.2%	20.5%
2096112	Joel Barlow High School	11.7%	37.0%	13.2%	*	19.2%	*	12.4%	21.4%	21.7%	13.2%	13.4%	*	17.5%	*
2106112	Lewis S. Mills High School	34.4%	44.8%	33.5%	41.4%	39.9%	42.7%	34.0%	29.7%	29.2%	48.4%	33.7%	38.7%	32.8%	35.5%
2116112	Parish Hill High School	45.7%	*	46.4%	*	45.2%	*	50.0%	*	58.8%	30.0%	45.3%	33.3%	38.5%	*
2120312	Shepaug Valley School	*	*	*	*	*	*	*	*	32.9%	23.1%	27.5%	*	27.3%	*
2126112	Shepaug Valley High School	24.0%	*	23.5%	*	26.6%	*	*	*	*	*				
2136112	Coginchaug Regional High School	42.1%	31.1%	36.9%	45.8%	39.6%	34.5%	39.9%	24.6%	38.8%	38.0%	33.1%	34.0%	41.8%	21.4%
2146112	Nonnewaug High School	26.0%	42.3%	31.0%	43.1%	27.7%	41.5%	31.7%	25.9%	28.4%	30.5%	34.2%	42.9%	29.1%	21.2%
2156212	Pomperaug Regional High School	34.5%	36.4%	29.4%	32.4%	30.4%	27.8%	29.9%	28.3%	25.9%	21.2%	27.4%	15.6%	28.0%	23.4%
2166012	Woodland Regional High School	45.2%	48.3%	50.6%	41.1%	41.1%	47.4%	41.2%	42.5%	45.4%	30.4%	39.9%	30.8%	38.9%	24.3%
2176112	Haddam-Killingworth High School	42.9%	34.8%	36.7%	32.3%	32.8%	32.2%	32.3%	35.3%	32.0%	29.2%	35.9%	31.7%	26.6%	32.4%
2186112	Lyme-Old Lyme High School	16.3%	*	20.6%	40.7%	20.8%	*	20.4%	27.3%	19.8%	*	19.0%	*	16.2%	*
2196112	E. O. Smith High School	31.5%	27.1%	28.9%	27.8%	36.5%	23.0%	29.4%	18.9%	33.0%	25.8%	30.6%	12.3%	34.4%	14.3%
2415114	Acad of Aerospace & Engineering	*	*	*	*	*	*	38.2%	*	33.3%	*	32.6%	*	38.8%	*
2415214	Civic Leadership High School	*	*	*	*	*	*	*	*	44.7%	*	51.5%	*	58.0%	55.2%
2416114	Metro Learn Center Global Studies	34.1%	48.3%	41.1%	41.0%	51.4%	48.6%	43.7%	55.3%	42.4%	51.3%	41.8%	45.5%	46.2%	41.9%
2416314	Great Path Academy at MCC	*	*	*	*	10.8%	*	N/A	N/A	N/A	N/A				
2416414	Greater Hartford Acad Arts HS	*	*	*	*	*	*	20.5%	56.7%	17.7%	58.6%	42.3%	45.5%	29.5%	67.9%
2416514	Academy of Science & Innovation	*	*	*	*	*	*	*	*	42.2%	*	50.0%	45.0%	48.6%	*
2416714	Two Rivers Magnet High School	*	*	*	*	*	*	*	*	*	*			51.4%	39.5%
2456014	Connecticut River Academy	*	*	*	*	*	*	*	*	30.3%	33.3%	38.0%	46.7%	49.4%	41.0%
2456114	Marine Science Magnet HS	*	*	*	*	*	*	*	*	26.1%	*	26.4%	*	50.0%	28.6%
2456214	Three Rivers Middle College	*	*	*	*	*	*	*	*	45.2%	*	44.8%	*	36.1%	*
2536014	Arts at Capitol Theater Magnet	*	*	*	*	37.5%	*	54.2%	*	42.4%	*	53.6%	*	41.9%	*
2536114	Quinebaug Middle College	*	*	*	*	37.8%	*	28.6%	*	26.1%	*	50.0%	*	23.5%	*
2686113	Common Ground High School	41.4%	*	43.2%	*	43.3%	*	37.1%	*	37.9%	*	50.0%	*	70.0%	52.4%
2696113	The Bridge Academy	29.0%	*	37.9%	*	33.3%	*	54.5%	*	65.6%	66.7%	83.3%	52.0%	65.6%	85.7%
2726113	Explorations	34.5%	*	*	*	*	*	26.1%	*	*	*	46.2%	*	*	*
2795113	Amistad Academy	*	*	*	*	*	*	23.8%	*	26.1%	*	50.0%	*	66.7%	30.0%



Graduating Class		2010	2010	2011	2011	2012	2012	2013	2013	2014	2014	2015	2015	2016	2016
School ID	School Name	% Enrolled in 16 Months	% Enrolled in Remediation†	% Enrolled in 16 Months	% Enrolled in Remediation†	% Enrolled in 16 Months	% Enrolled in Remediation†	% Enrolled in 16 Months	% Enrolled in Remediation†	% Enrolled in 16 Months	% Enrolled in Remediation†	% Enrolled in 16 Months	% Enrolled in Remediation†	% Enrolled in 16 Months	% Enrolled in Remediation†
2826013	Stamford Academy	*	*	*	*	30.0%	*	*	*	24.0%	*	21.4%	*	42.9%	*
2850113	Achievement First Bridgeport	*	*	*	*	*	*	*	*	*	*	53.3%	*	44.0%	*
2880113	Achievement First Hartford	*	*	*	*	*	*	*	*	*	*			45.2%	*
9001116	Bullard-Havens Technical HS	41.2%	82.8%	44.8%	57.3%	45.6%	80.9%	52.9%	83.0%	41.9%	77.8%	50.0%	73.1%	49.2%	62.6%
9001216	Henry Abbott Technical HS	38.1%	75.5%	43.7%	57.6%	35.0%	61.8%	30.1%	37.2%	38.1%	52.8%	39.6%	49.1%	42.4%	52.5%
9001316	H. H. Ellis Technical High School	24.6%	67.7%	27.8%	53.1%	24.6%	67.7%	29.2%	60.6%	20.6%	40.9%	26.3%	50.0%	24.2%	44.8%
9001416	Eli Whitney Technical High School	34.5%	82.8%	38.0%	81.6%	40.9%	83.0%	32.0%	87.5%	31.4%	84.8%	40.0%	75.0%	26.2%	81.5%
9001516	A. I. Prince Technical High School	44.0%	78.0%	44.3%	87.1%	42.9%	79.1%	33.6%	72.5%	47.2%	78.6%	33.9%	68.3%	39.2%	68.1%
9001616	Howell Cheney Technical HS	33.9%	39.5%	31.6%	38.1%	29.3%	65.9%	39.4%	63.1%	36.8%	57.9%	25.7%	50.0%	30.1%	61.4%
9001716	H. C. Wilcox Technical High School	34.6%	70.4%	31.6%	64.3%	41.5%	66.3%	35.0%	58.1%	34.3%	47.5%	33.7%	63.3%	36.8%	43.3%
9001816	Vinal Technical High School	26.6%	54.5%	19.2%	66.7%	25.6%	65.6%	33.8%	57.8%	31.1%	66.7%	20.0%	63.3%	27.7%	70.7%
9001916	E. C. Goodwin Technical HS	38.6%	90.6%	31.0%	83.9%	35.5%	72.1%	33.1%	80.5%	25.4%	77.1%	36.4%	70.8%	36.3%	83.0%
9002016	Norwich Technical High School	38.3%	69.4%	34.5%	50.0%	24.3%	52.8%	28.1%	48.8%	25.2%	44.7%	34.2%	56.4%	30.2%	31.1%
9002216	Oliver Wolcott Technical HS	31.1%	52.6%	35.4%	60.3%	29.4%	55.3%	30.9%	58.8%	35.0%	69.4%	28.8%	56.8%	29.0%	54.8%
9002316	W. F. Kaynor Technical HS	33.9%	62.5%	39.0%	66.7%	48.3%	66.3%	44.7%	58.3%	45.6%	37.8%	44.9%	49.3%	41.4%	56.9%
9002416	Windham Technical High School	38.7%	60.5%	34.2%	56.1%	44.8%	50.0%	38.2%	38.0%	36.7%	63.8%	32.6%	55.8%	31.0%	47.5%
9002516	Emmett O'Brien Technical HS	21.3%	65.2%	37.2%	71.4%	33.8%	72.7%	29.6%	73.5%	31.7%	61.5%	32.5%	70.7%	40.6%	66.1%
9002616	Platt Technical High School	29.3%	59.0%	27.7%	69.8%	41.5%	54.5%	32.7%	59.7%	32.7%	43.3%	34.0%	54.4%	34.7%	55.2%
9002716	Ella T. Grasso Technical HS	41.7%	80.0%	31.7%	71.1%	26.0%	65.8%	35.4%	52.9%	33.3%	61.0%	26.7%	66.7%	29.0%	63.2%
9016122	Norwich Free Academy	44.8%	50.8%	43.7%	49.6%	42.2%	40.9%	39.5%	42.6%	38.5%	45.7%	48.0%	38.4%	44.4%	43.5%
9026122	The Gilbert School	47.7%	62.7%	35.6%	66.7%	38.1%	62.5%	52.9%	62.2%	42.9%	69.7%	34.1%	72.4%	29.2%	61.5%
9036122	The Woodstock Academy	43.5%	41.0%	40.8%	44.3%	42.2%	36.2%	38.4%	34.6%	36.8%	33.7%	33.7%	28.1%	39.5%	24.5%

\* Data suppressed to protect confidentiality

† This row is a subset of the column immediately preceding it.

Source: P20WIN data and SDE calculations

**Table 8: Percent of Graduating Class Enrolled in a Postsecondary Institution within 16 Months of Graduation by College/University Type**

Graduating Class	2015		2016	
	Number of Students	Percent of Graduating Class	Number of Students	Percent of Graduating Class
<b>College/University Type</b>				
CT community colleges	7,095	18.6%	7,034	18.2%
CT State Universities	3,824	10.0%	3,802	9.9%
University of Connecticut	3,120	8.2%	3,325	8.6%
CT Private Universities	2,569	6.7%	2,548	6.6%
<i>In-State Total</i>	<i>16,608</i>	<i>43.5%</i>	<i>16,709</i>	<i>43.3%</i>
Out-of-State Public Institution	4,329	11.3%	4,366	11.3%
Out-of-State Private Institution	7,646	20.0%	7,734	20.1%
<i>Out-of-State Total</i>	<i>11,975</i>	<i>31.3%</i>	<i>12,100</i>	<i>31.4%</i>
<b>Total Students Enrolled</b>	<b>28,583</b>	<b>74.8%</b>	<b>28,809</b>	<b>74.7%</b>
<b>Total Students Not Enrolled</b>	<b>9,615</b>	<b>25.2%</b>	<b>9,749</b>	<b>25.3%</b>
<b>Total in HS Graduating Class</b>	<b>38,198</b>	<b>100%</b>	<b>38,558</b>	<b>100%</b>

*NOTE: To avoid duplicates, this table only counts the college/university at which each student first enrolled. For example, a student who enrolled at UCONN and then transferred to a private university will count toward the UCONN total only, even if both enrollments occurred within 16 months of graduation.*

**Source: National Student Clearinghouse data and SDE calculations**

**Table 9: Percent of Students Enrolled in a CT Private College/University within 16 Months of Graduation by Student Group**

Graduating Class	2013	2014	2015	2016
Female	7.9%	8.6%	9.1%	8.7%
Male	5.1%	5.4%	5.7%	6.0%
American Indian or Alaska Native	*	*	*	*
Asian	6.6%	5.9%	7.3%	7.1%
Black or African American	8.0%	8.7%	7.3%	7.6%
Hispanic/Latino of any race	5.4%	6.2%	6.7%	6.6%
Native Hawaiian or Other Pacific Islander	*	*	*	*
Two or More Races	*	*	7.7%	6.1%
White	6.5%	7.0%	7.6%	7.6%
English Learners	2.5%	2.6%	2.6%	3.1%
Not English Learners	6.6%	7.1%	7.5%	7.5%
Students with Disabilities	2.4%	4.3%	3.3%	3.8%
Not Students with Disabilities	6.9%	7.3%	7.8%	7.7%
Eligible for Free- or Reduced-Price Meals	5.6%	6.6%	6.2%	6.6%
Not Eligible for Free- or Reduced- Price Meals	6.9%	7.2%	7.9%	7.7%
<b>Total</b>	<b>6.5%</b>	<b>7.0%</b>	<b>7.4%</b>	<b>7.3%</b>

*NOTE: This table counts any student who enrolled in a CT private college/university within 16 months of graduation, even if a student transfers in from another university type.*

**Source: National Student Clearinghouse data and SDE calculations**

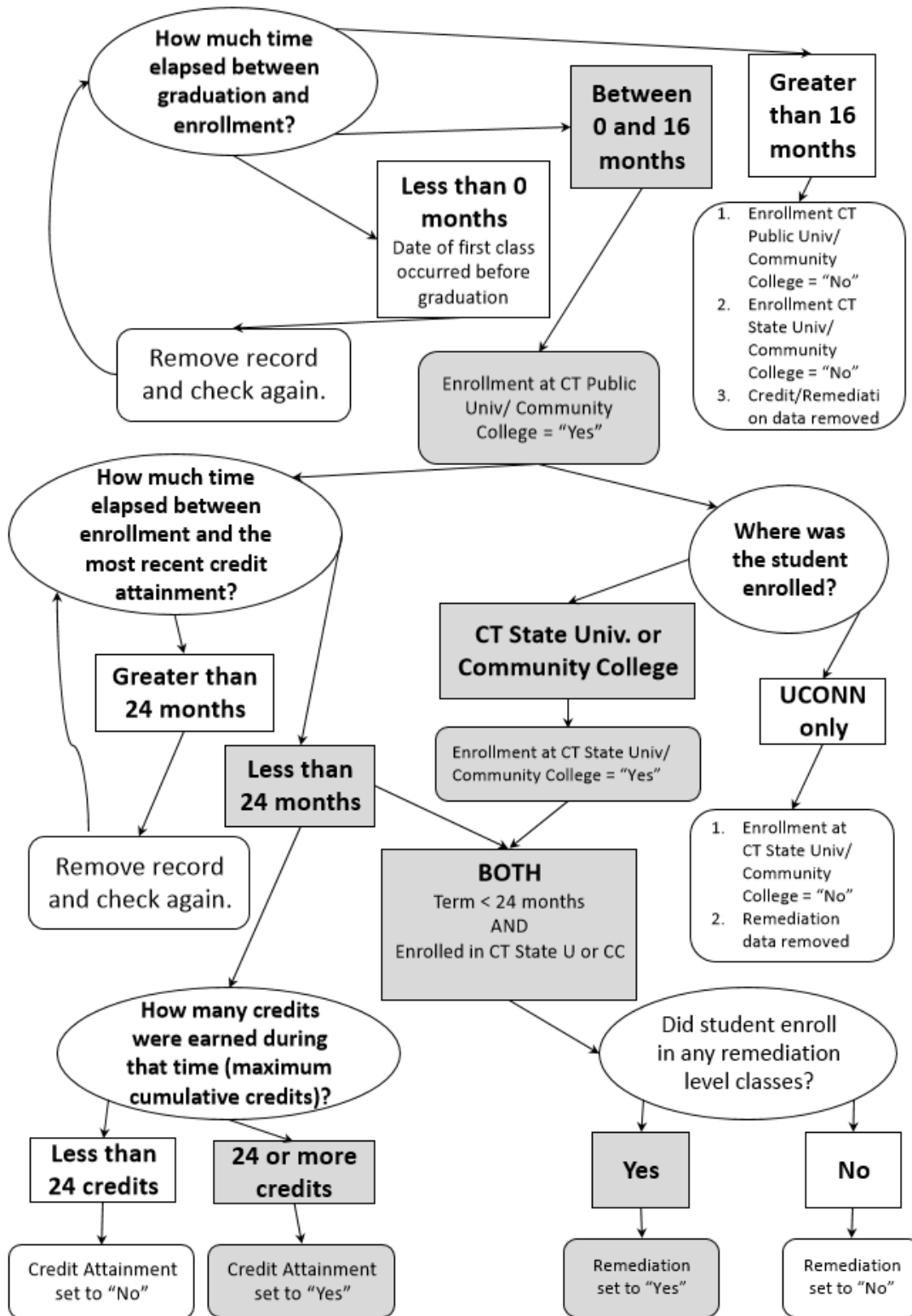
## **Appendix C: Methods**

## Explanation of Programming Logic for Term/Student-level Records

See Figure 1 on next page

- **Var1:** All students enrolled in a CPUCC within 16 months of graduation.
  - If earliest start-of-term date before graduation (i.e., a dual-enrollment student), term record discarded before repeating this step.
  - If earliest start-of-term date more than 16 months after graduation:
    - Student-level enrollment at CPUCC = "No" (*Var1=0*)
    - Student-level enrollment at CSCU = "No" (*Var3=0*)
    - Student-level credit and remediation data removed (*Var2, Var4 = missing*)
  - If the earliest start-of-term date within 16 months after graduation:
    - Student-level enrollment at CPUCC = "Yes" (*Var1=1*)
- **Var2:** Out of those students where enrollment at CPUCC = "Yes" (*Var1=1*), all students with 24 or more credits within two years of enrollment.
  - For each term record, time between credit attainment date and enrollment date calculated. If more than two years, term record discarded.
  - Calculated the maximum number of cumulative credits for each student:
    - If 24 or more credits, student-level credit attainment = "Yes" (*Var2=1*)
    - Otherwise, student-level credit attainment = "No" (*Var2=0*)
- **Var3:** Out of those students where enrollment at CPUCC = "Yes" (*Var1=1*), regardless of credit attainment, all students enrolled in a CSCU within 16 months of graduation.
  - If UCONN only:
    - Student-level enrollment at CSCU = "No" (*Var3=0*)
    - Student-level remediation data removed (*Var4 = missing*)
  - If a student attended a CSCU, enrollment at CSCU was set to "Yes" (*Var3=1*)
- **Var4:** Out of those students where enrollment at CSCU = "Yes" (*Var3=1*), regardless of credit attainment, all students with at least one remedial class within two years
  - If remediation occurred, student-level remediation = "Yes" (*Var4=1*).
  - Otherwise, student-level remediation = "No" (*Var4=0*).

Figure 1: Visual Representation of Programming Logic



## Calculation of School/District-level records

1. The school/district percentage of students enrolled at a CPUCC within 16 months of graduation is the number of students within each school/district with a “Yes” for enrollment at a CPUCC divided by the total number of students within the school/district then multiply by 100%.

$$\frac{\text{sum Var1}}{\text{count of graduates in organization}} * 100\%$$

2. The school/district percentage of students who completed one year’s worth of credit within two years of enrollment is the number of students within each school/district with a “Yes” for credit attainment divided by the number of students within each school/district with a “Yes” for enrollment at a CPUCC then multiplied by 100%.

$$\frac{\text{sum Var2}}{\text{sum Var3}} * 100\%$$

3. The school/district percentage of students enrolled at a CSCU within 16 months of graduation is the number of students within each school/district with a “Yes” for enrollment at a CSCU divided by the total number of students within the school/district then multiplied by 100%.

$$\frac{\text{sum Var3}}{\text{count of graduates in organization}} * 100\%$$

4. The school/district percentage of students enrolled in a remedial course is the number of students within each school/district with a “Yes” for remediation divided by the number of students within each school/district with a “Yes” for enrollment at a CSCU then multiplied by 100%.

$$\frac{\text{sum Var4}}{\text{sum Var3}} * 100\%$$

## Data Suppression

For more information about data suppression rules used in this analysis, please visit:

[edsight.ct.gov/relatedreports/BDCRE%20Data%20Suppression%20Rules.pdf](https://edsight.ct.gov/relatedreports/BDCRE%20Data%20Suppression%20Rules.pdf)