

# THE MAIN AVENUE CONNECTOR

Downtown Cleveland Main Avenue Bridge Underpass Design Development Report



port

In collaboration with:  
WESTLAKE REED LESKOSKY  
and  
WEATHERS

February 24th, 2016



port



**Westlake  
Reed  
Leskosky**



*weathers* LLC

EXISTING SITE



# SIX SITE ATTRIBUTES

Fundamental qualities and features of the site



Varied Water ( Lake + River)



Rolling Topography (Hills + Valley)



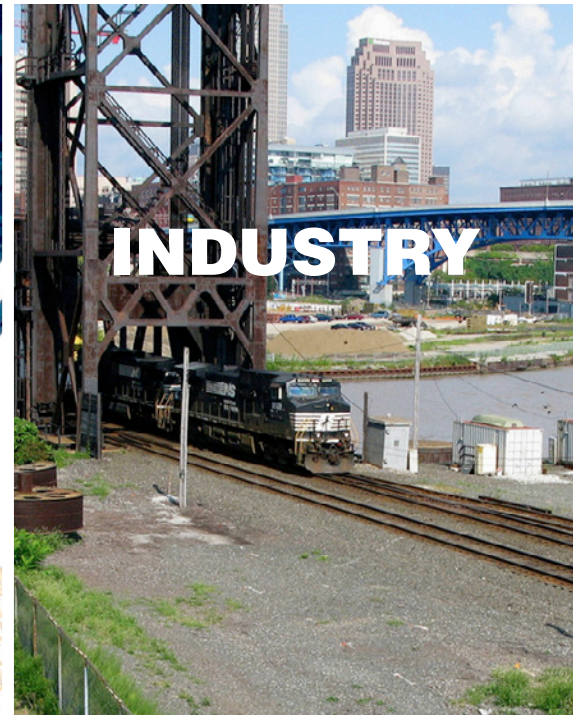
Great Building Stock (Big + Brick)



Dramatic Weather (Sun + Clouds + Rain + Snow)



Iconic Bridge



Active Industry (Barges +Freighters + Trains)

# SIX CITY ATTRIBUTES

The corridor as a microcosm of the city



**WATER**

Varied Water ( Lake + River)



**TOPOGRAPHY**

Rolling Topography (Hills + Valley)



**BUILDING STOCK**

Great Building Stock (Big + Brick)



**WEATHER**

Dramatic Weather (Sun + Clouds + Rain + Snow)



**BRIDGE**

Iconic Bridge



**INDUSTRY**

Active Industry (Barges +Freighters + Trains)

**PROJECT INTENT:**

**Create a physically compelling, spatially unique public realm that actively engages and amplifies these intrinsic attributes**



# SIX SITE ATTRIBUTES

Fundamental qualities and features of the site



Varied Water ( Lake + River)



Rolling Topography (Hills + Valley)



Great Building Stock (Big + Brick)

# SIX SITE ATTRIBUTES

Fundamental qualities and features of the site



**Dramatic Weather (Sun + Clouds + Rain + Snow)**

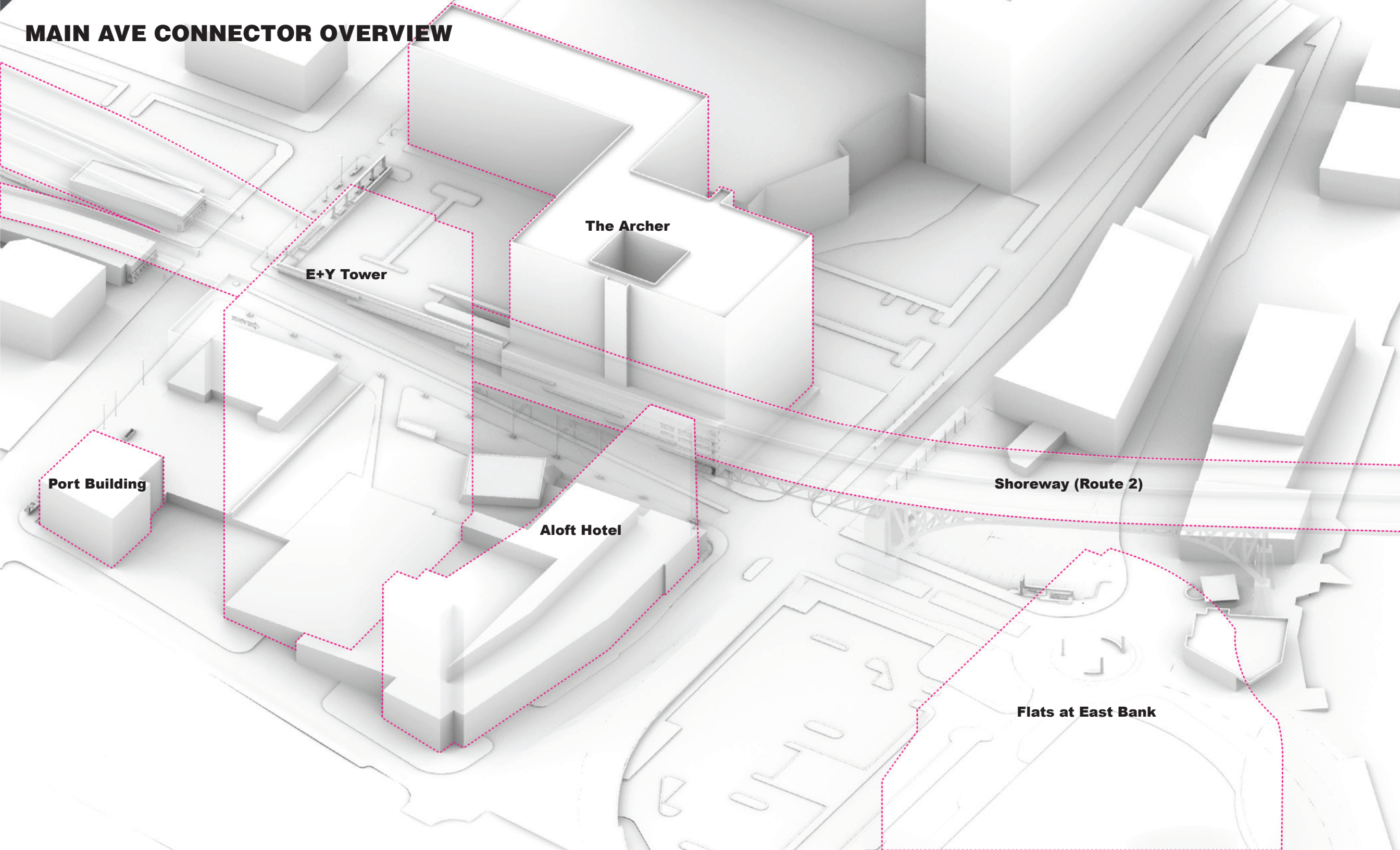


**Iconic Bridge**



**Active Industry (Barges +Freighters + Trains)**

# MAIN AVE CONNECTOR OVERVIEW



**The Archer**

**E+Y Tower**

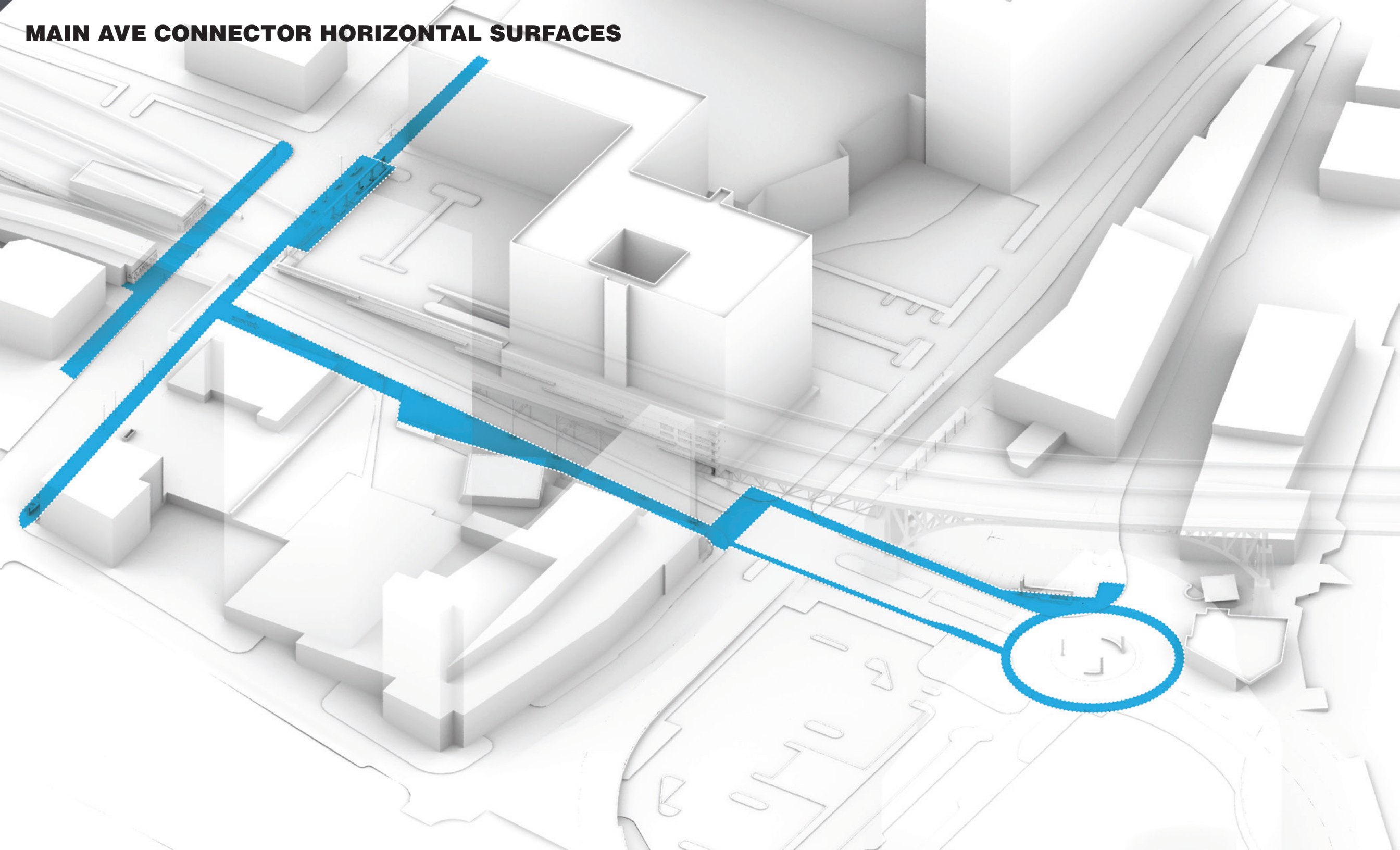
**Port Building**

**Aloft Hotel**

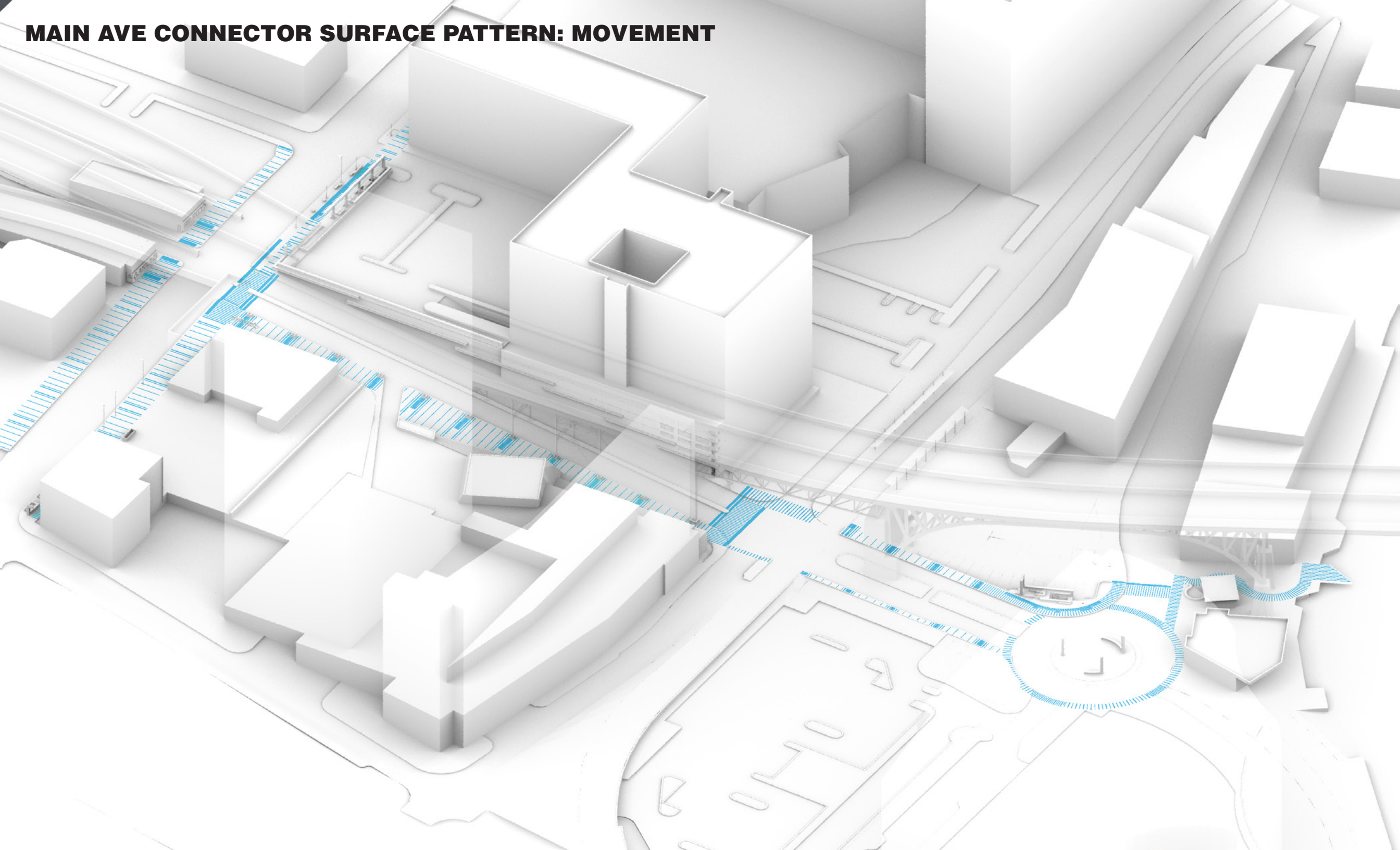
**Shoreway (Route 2)**

**Flats at East Bank**

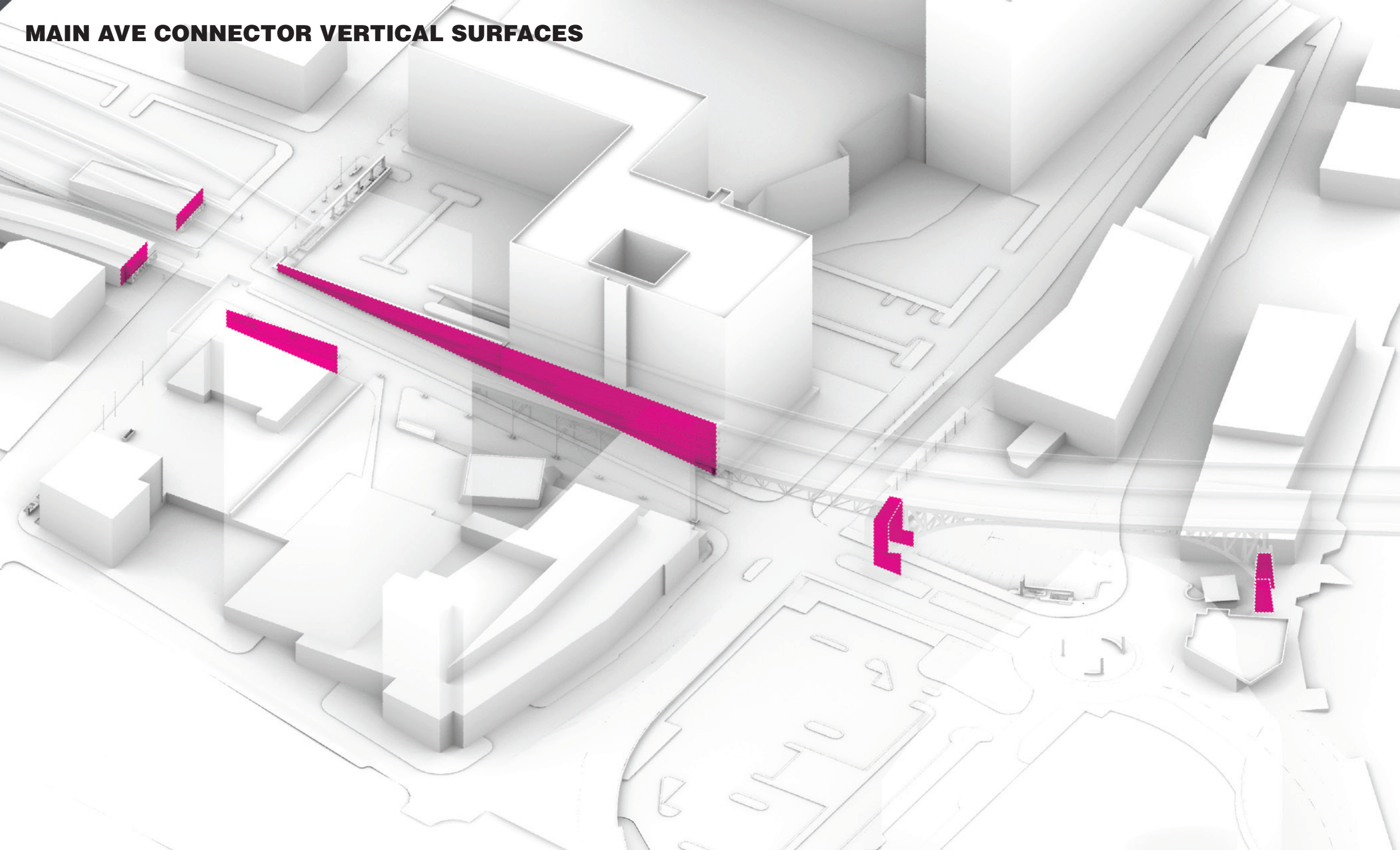
# MAIN AVE CONNECTOR HORIZONTAL SURFACES



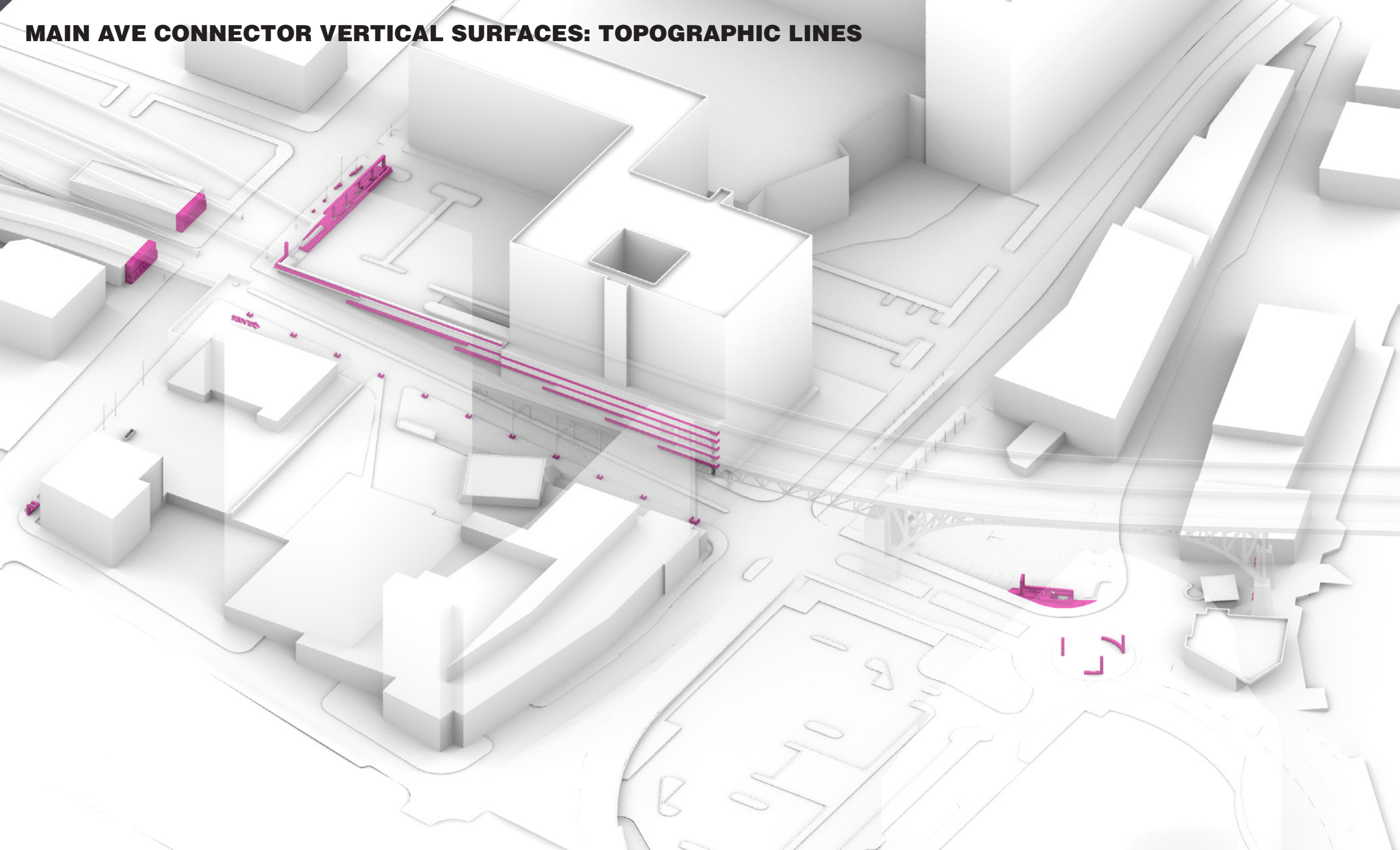
# MAIN AVE CONNECTOR SURFACE PATTERN: MOVEMENT



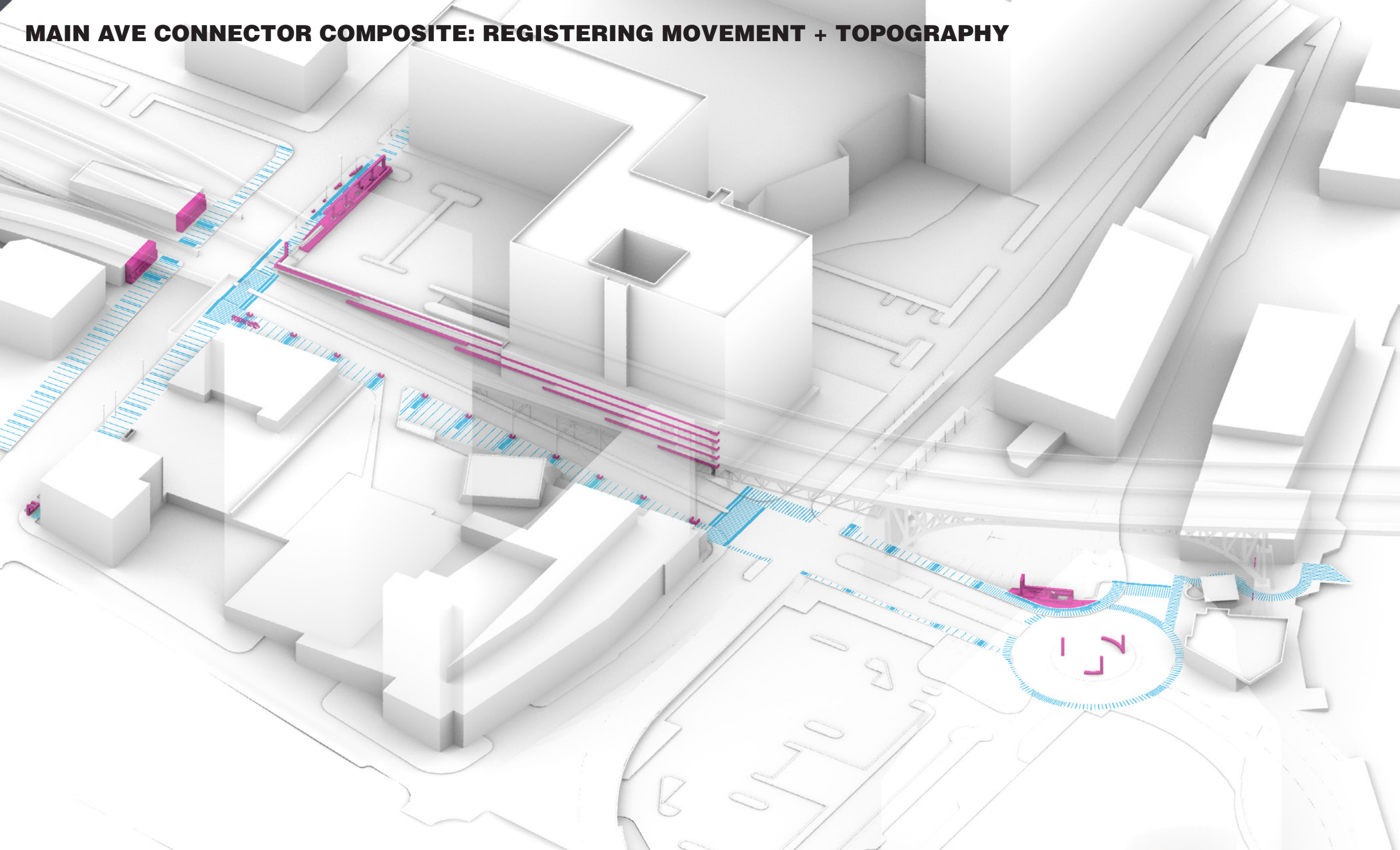
# MAIN AVE CONNECTOR VERTICAL SURFACES



**MAIN AVE CONNECTOR VERTICAL SURFACES: TOPOGRAPHIC LINES**

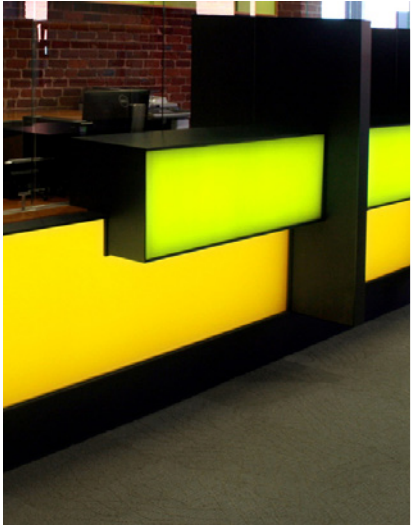


# MAIN AVE CONNECTOR COMPOSITE: REGISTERING MOVEMENT + TOPOGRAPHY





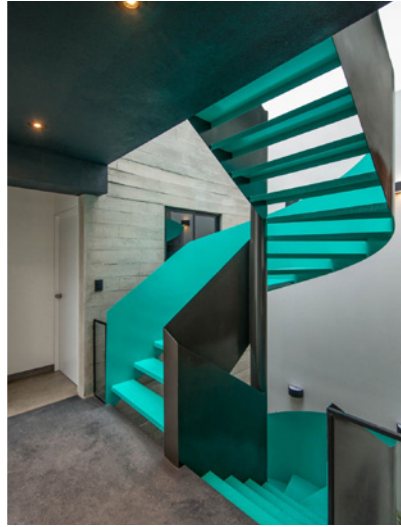
# PRIMARY MATERIAL PALETTE



Animated Light Bars



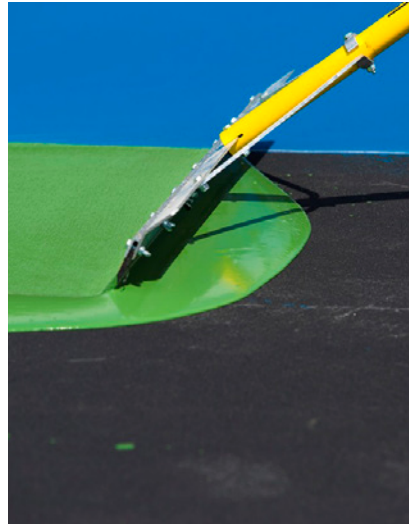
Black Brushed Steel Cabinets



Brightly Colored Accents



Composite Decking



Common Outdoor Paint



Defining Graphic Sensibility

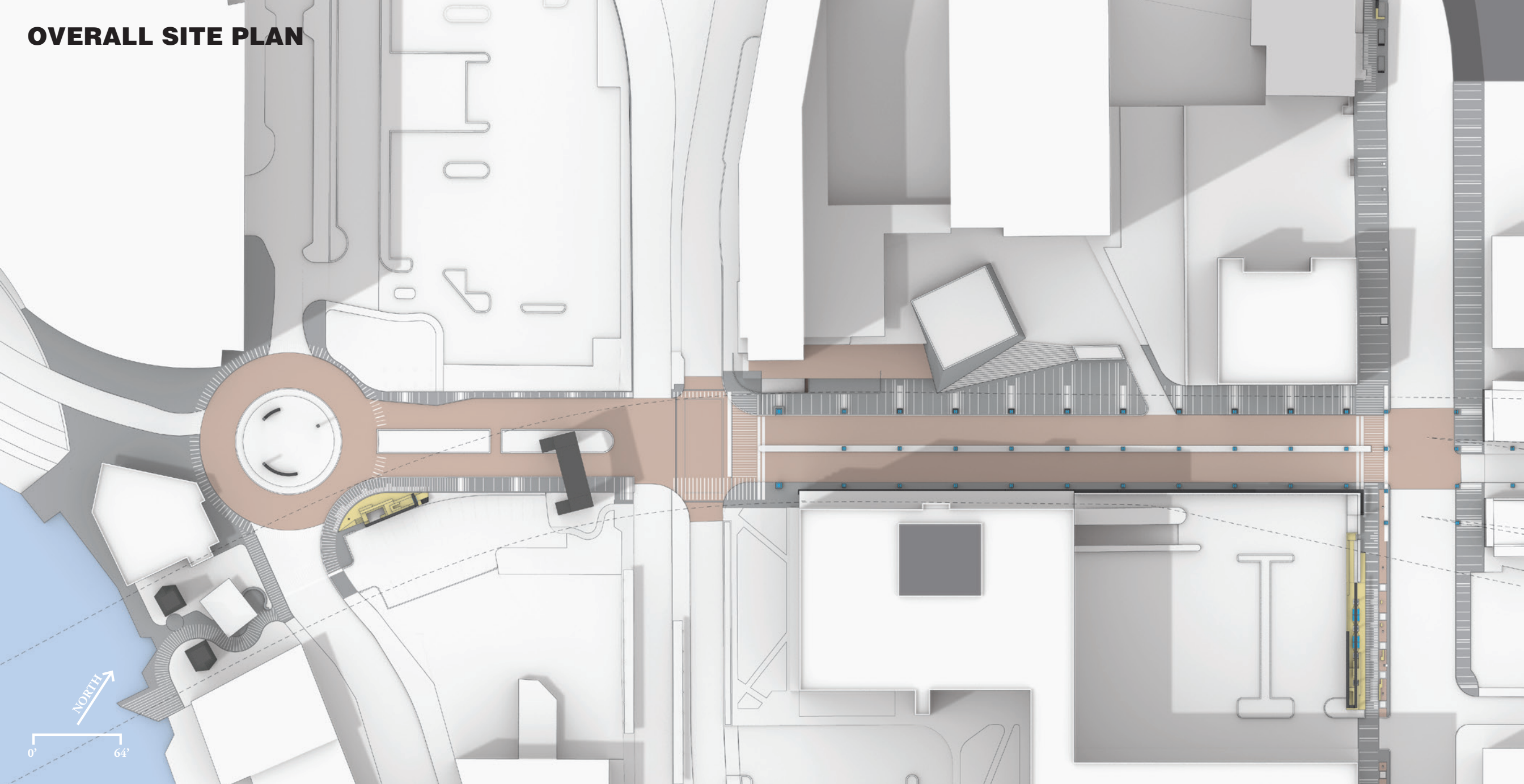


Lush Vertical Gardens

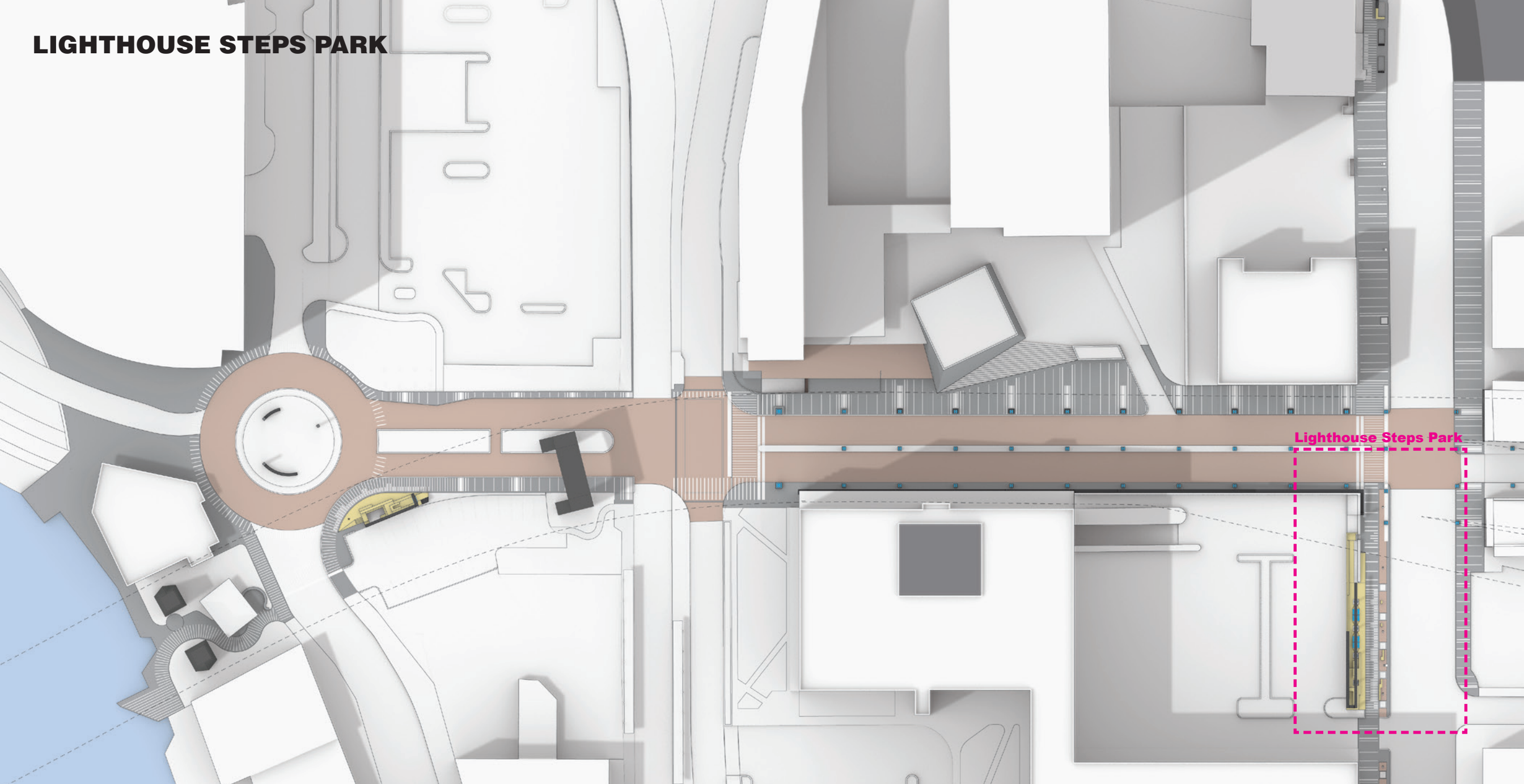


Native Grasses + Shrubs

# OVERALL SITE PLAN



# LIGHTHOUSE STEPS PARK



Lighthouse Steps Park

1

**Existing Conditions at 9th Avenue**



**Existing Conditions: Historic Wall**





**Existing Conditions: Historic Stairs**

# LIGHTHOUSE STEPS PARK

Rendered Aerial View



# LIGHTHOUSE STEPS PARK

Dramatic Lighting + Platform Swings & Seating + Vertical Gardens

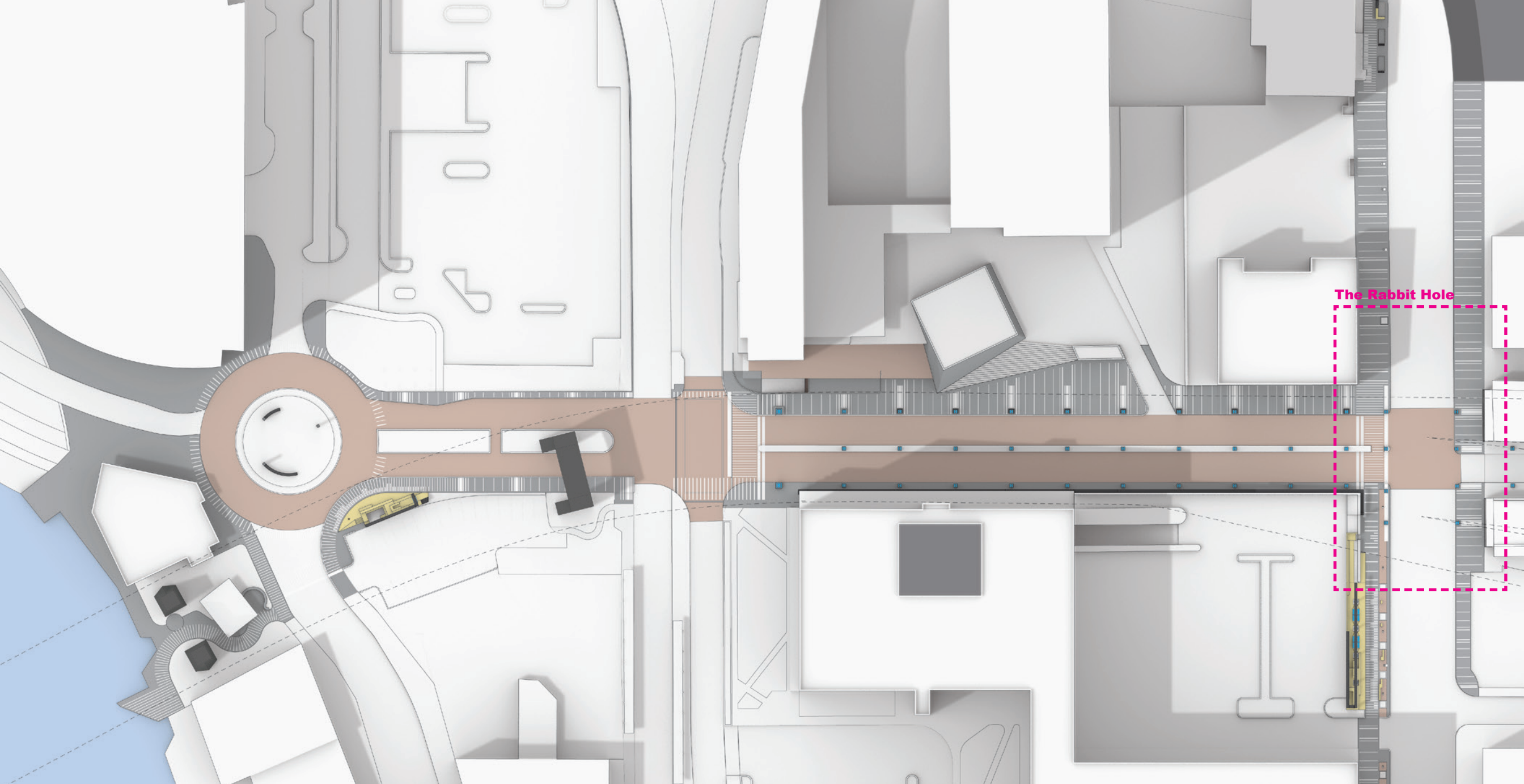




# LIGHTHOUSE STEPS PARK

Dramatic Lighting + Platform Swings & Seating + Vertical Gardens





The Rabbit Hole

**Existing Conditions: Underpass + Rabbit Hole**



**Existing Conditions - Underpass Crosswalk**



**Existing Conditions: Exiting Rabbit Hole**



# THE RABBIT HOLE

Light Bar + Wayfinding Walls



# THE RABBIT HOLE

Light Bar + Wayfinding Walls



# THE MAIN AVENUE HILL—TOP

Lighthouse Steps Park + Light Bars + Chalk Wall + River Sign







**THE MAIN AVENUE HILL—TOP**

Lighthouse Steps Park + Light Bars + Chalk Wall + River Sign

# THE MAIN AVENUE HILL—MIDDLE

Animated Light Bars + Light Box Follies



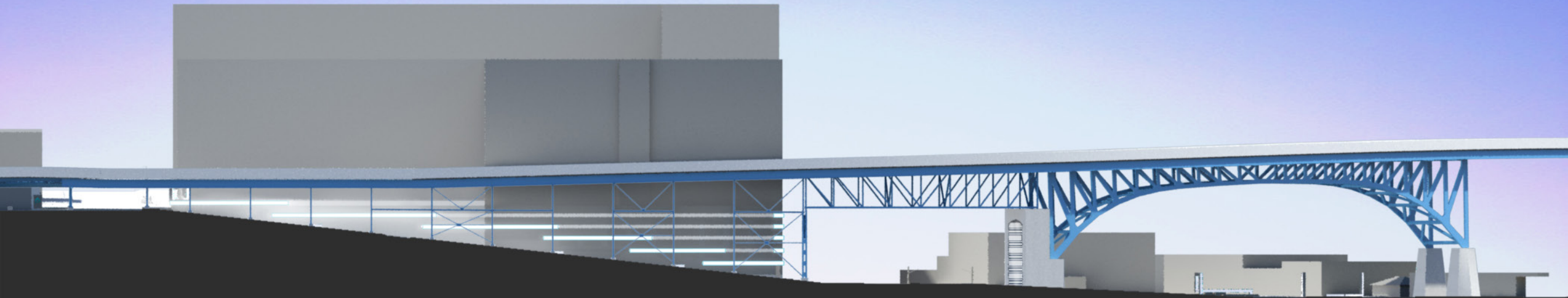
# THE MAIN AVENUE HILL—BOTTOM

Animated Light Bars + Light Box Follies

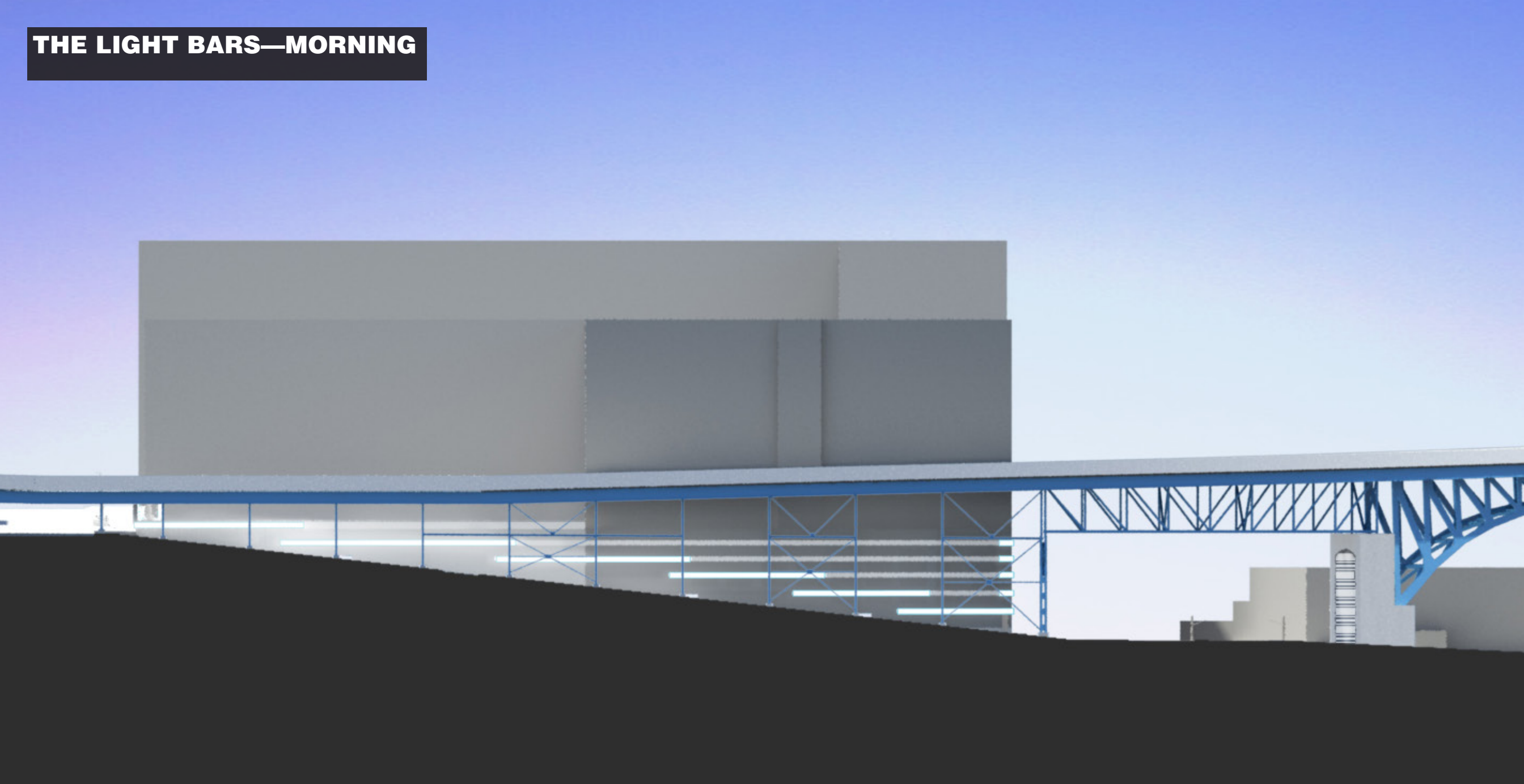


# THE MAIN AVENUE HILL LIGHT BARS

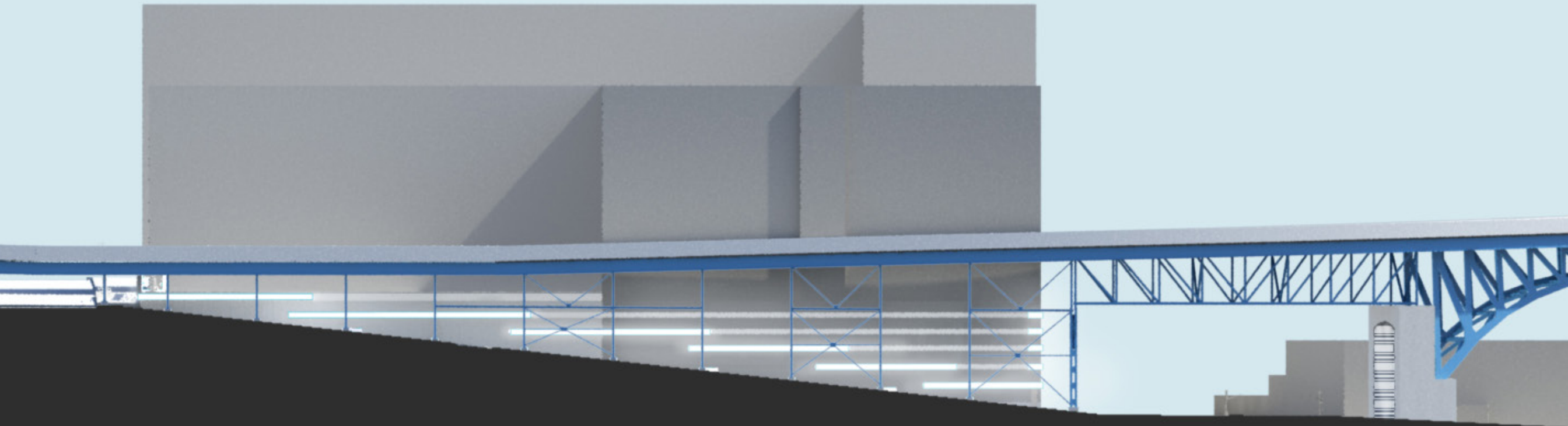
Light Bars Represent Cleveland's Topography Abstracted



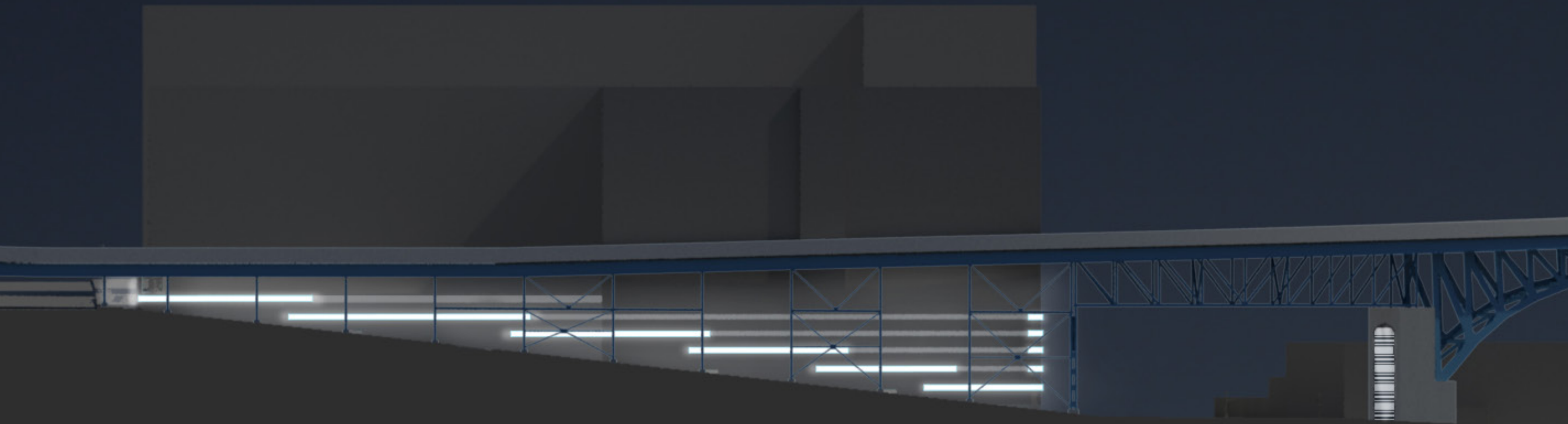
**THE LIGHT BARS—MORNING**



# THE LIGHT BARS—AFTERNOON



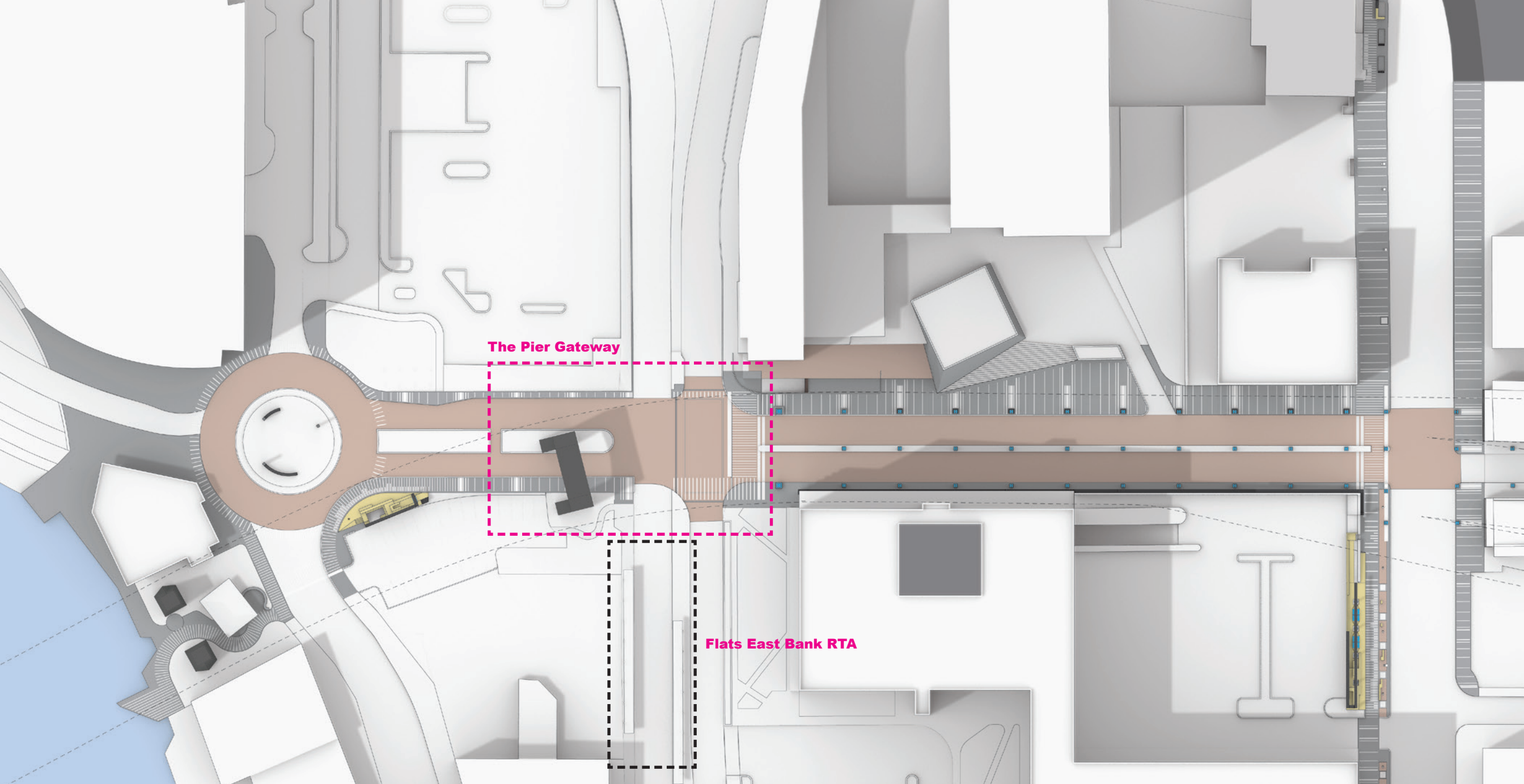
# THE LIGHT BARS—EVENING



4







**The Pier Gateway**

**1**

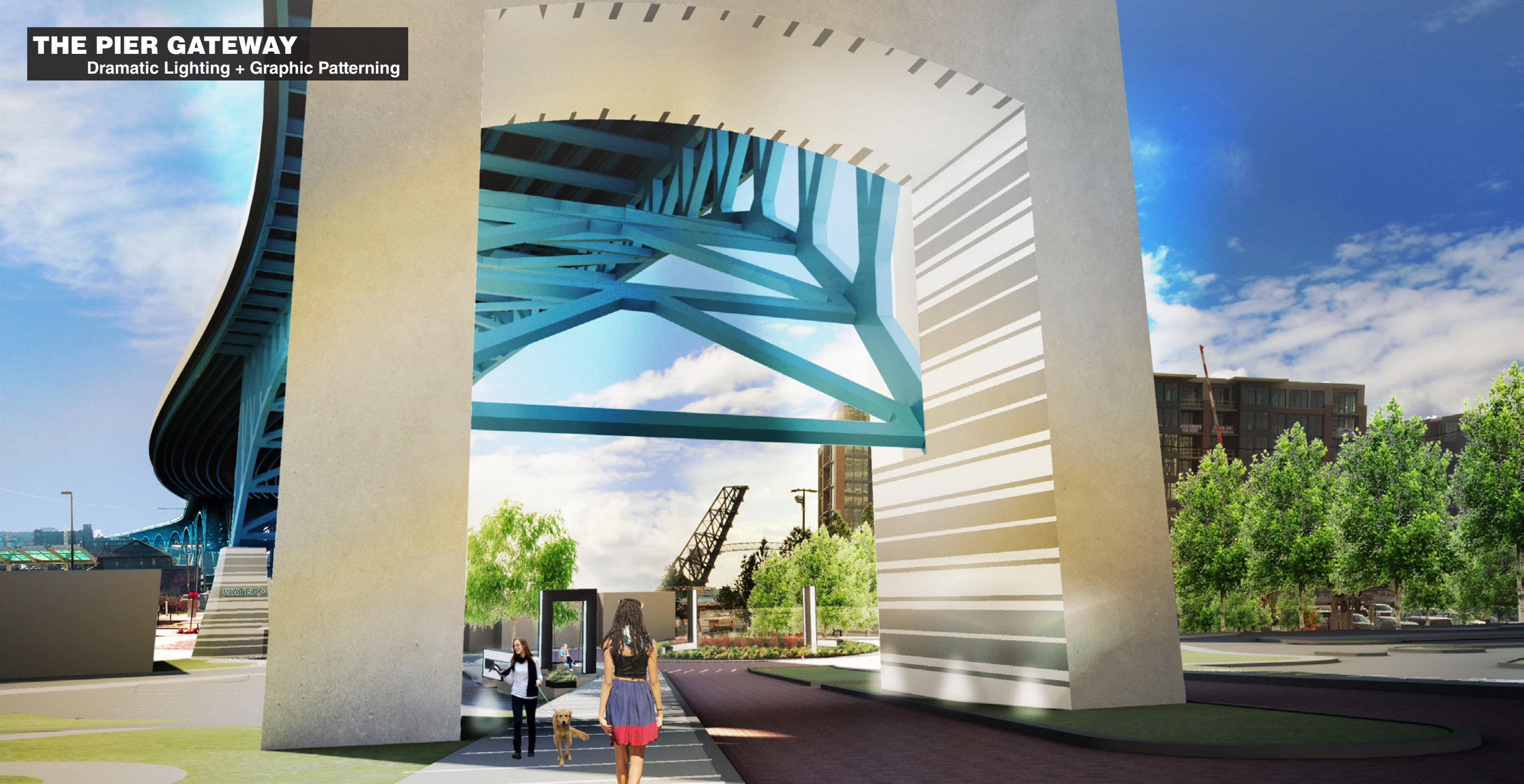
**Flats East Bank RTA**

**Existing Conditions: Bridge Pier Gateway Arch at RTA**



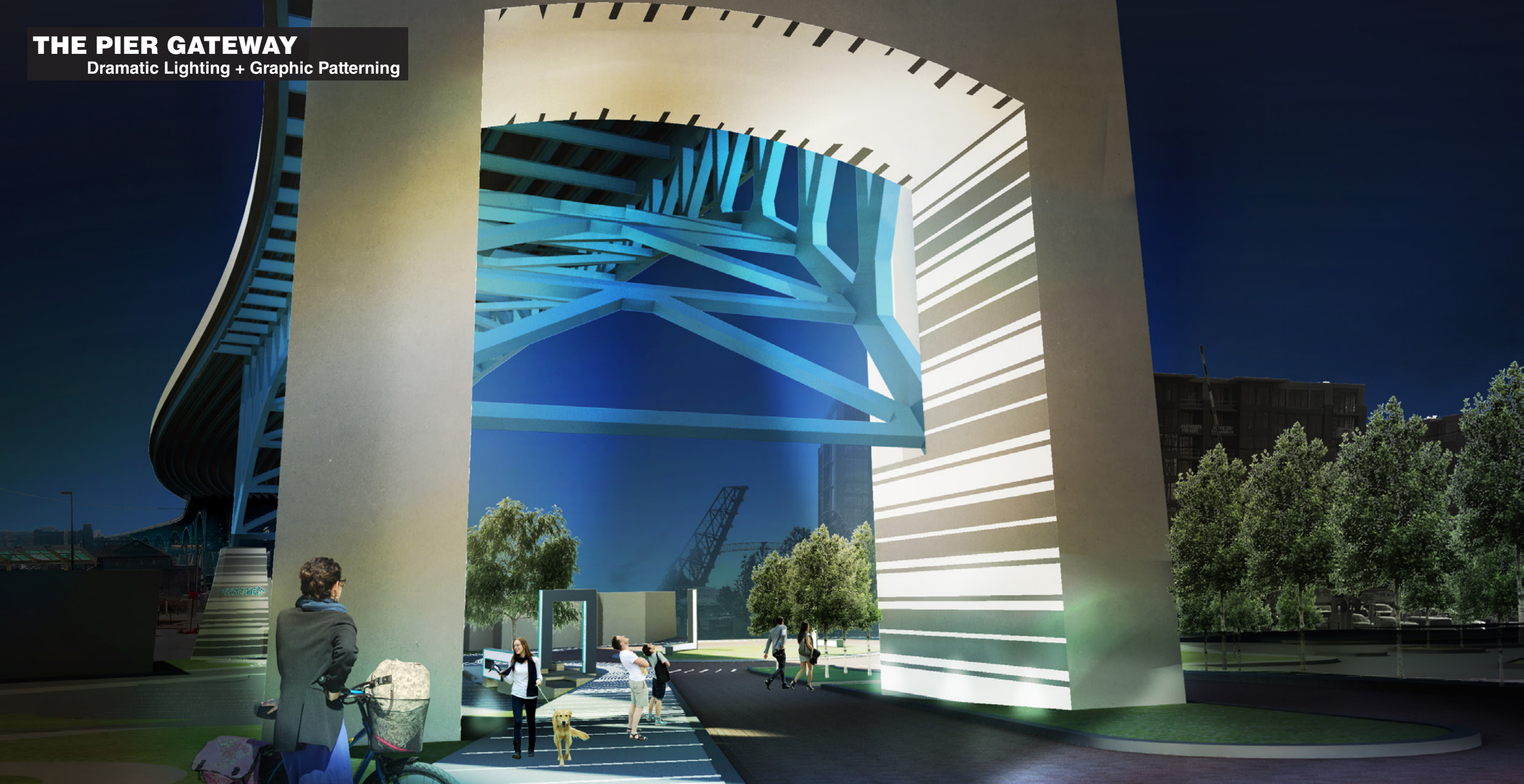
# THE PIER GATEWAY

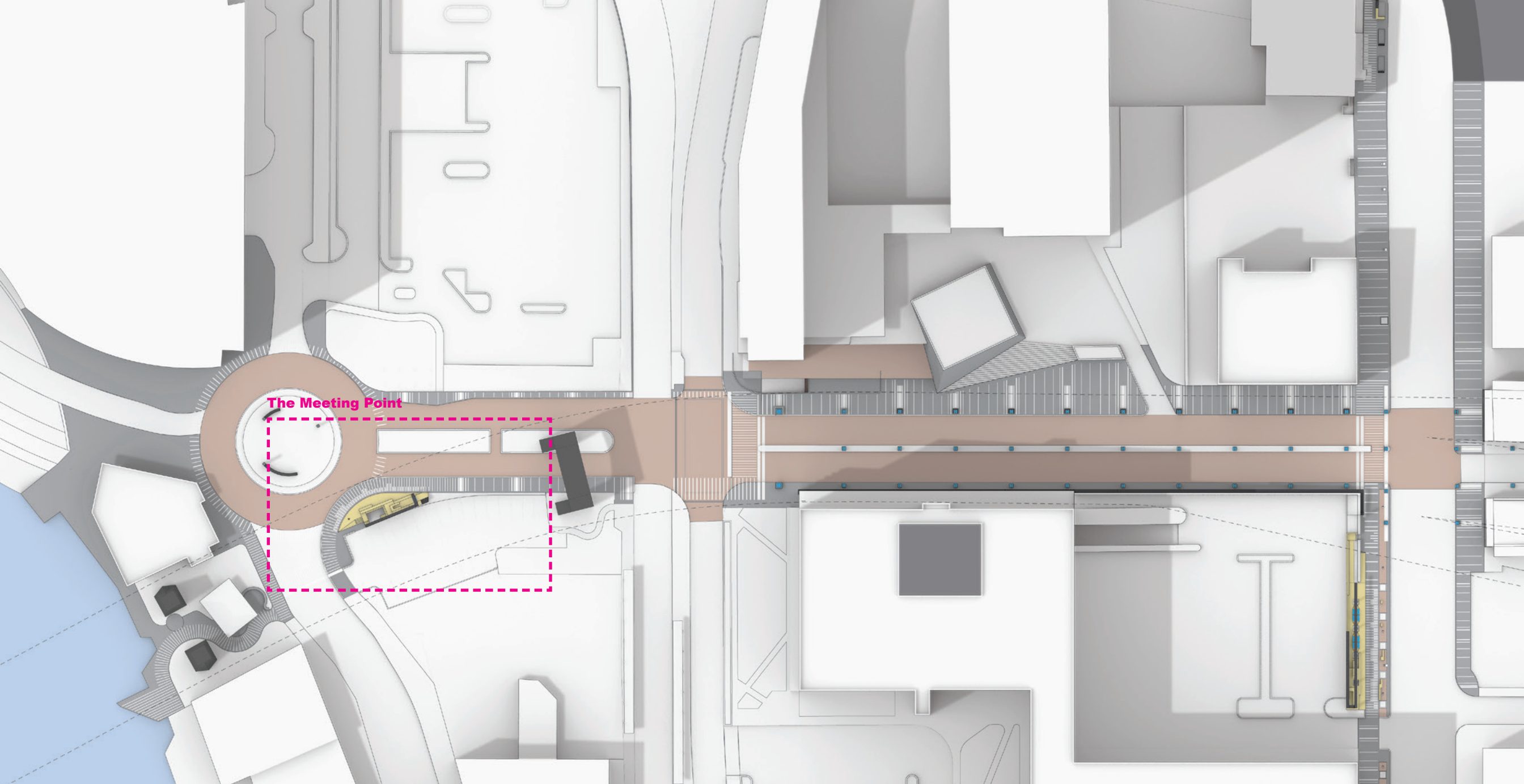
Dramatic Lighting + Graphic Patterning



# THE PIER GATEWAY

Dramatic Lighting + Graphic Patterning





The Meeting Point

**Existing Conditions: Parking Lot Rain Garden**



# THE MEETING POINT

Rendered Aerial View



# THE MEETING POINT

Integrated Light Bar + Meeting Point Swing + Defined Pedestrian Zone





# THE MEETING POINT

Defined Pedestrian Zone + Integrated Seating + Native Grasses

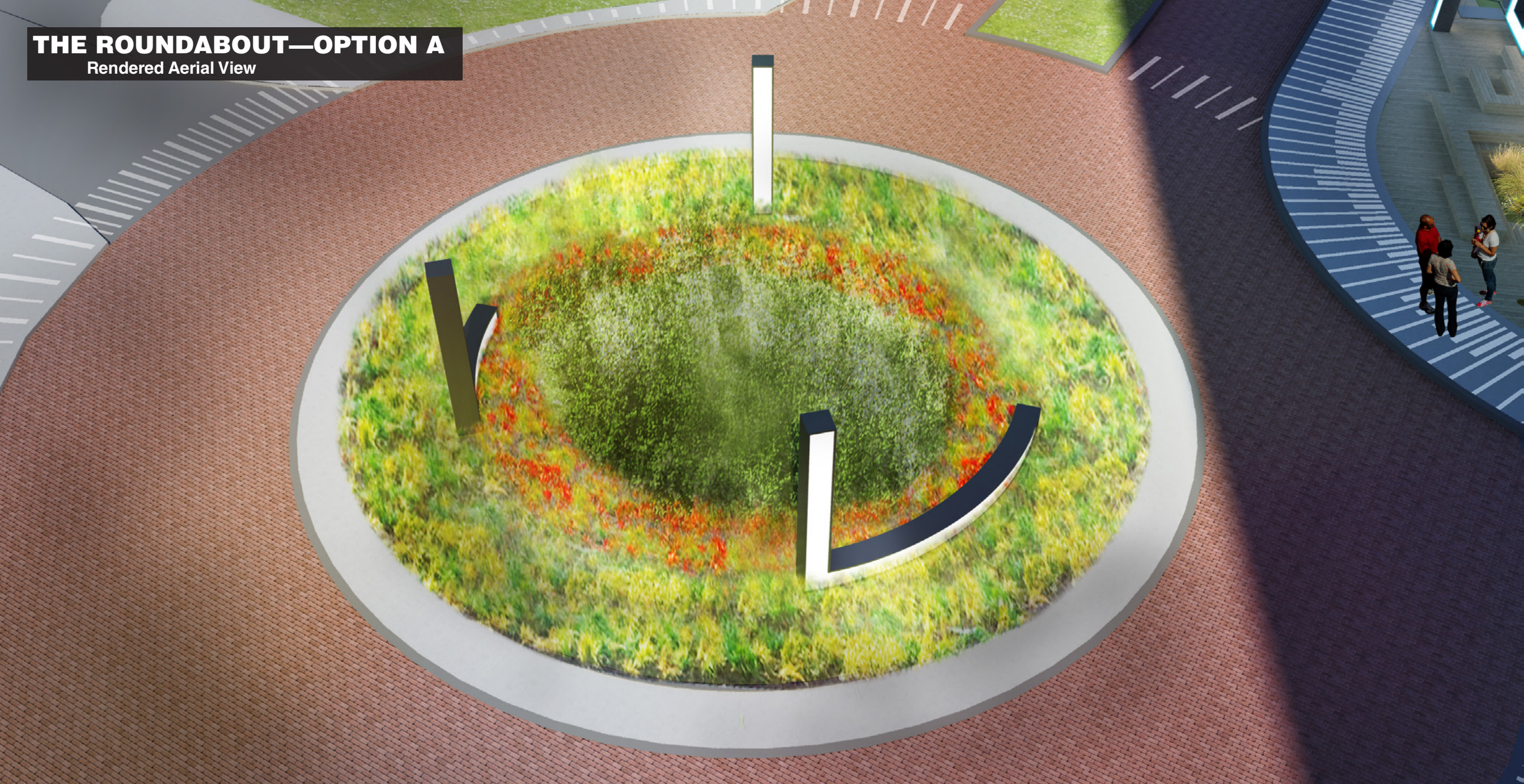


**View 19: Roundabout—Existing**



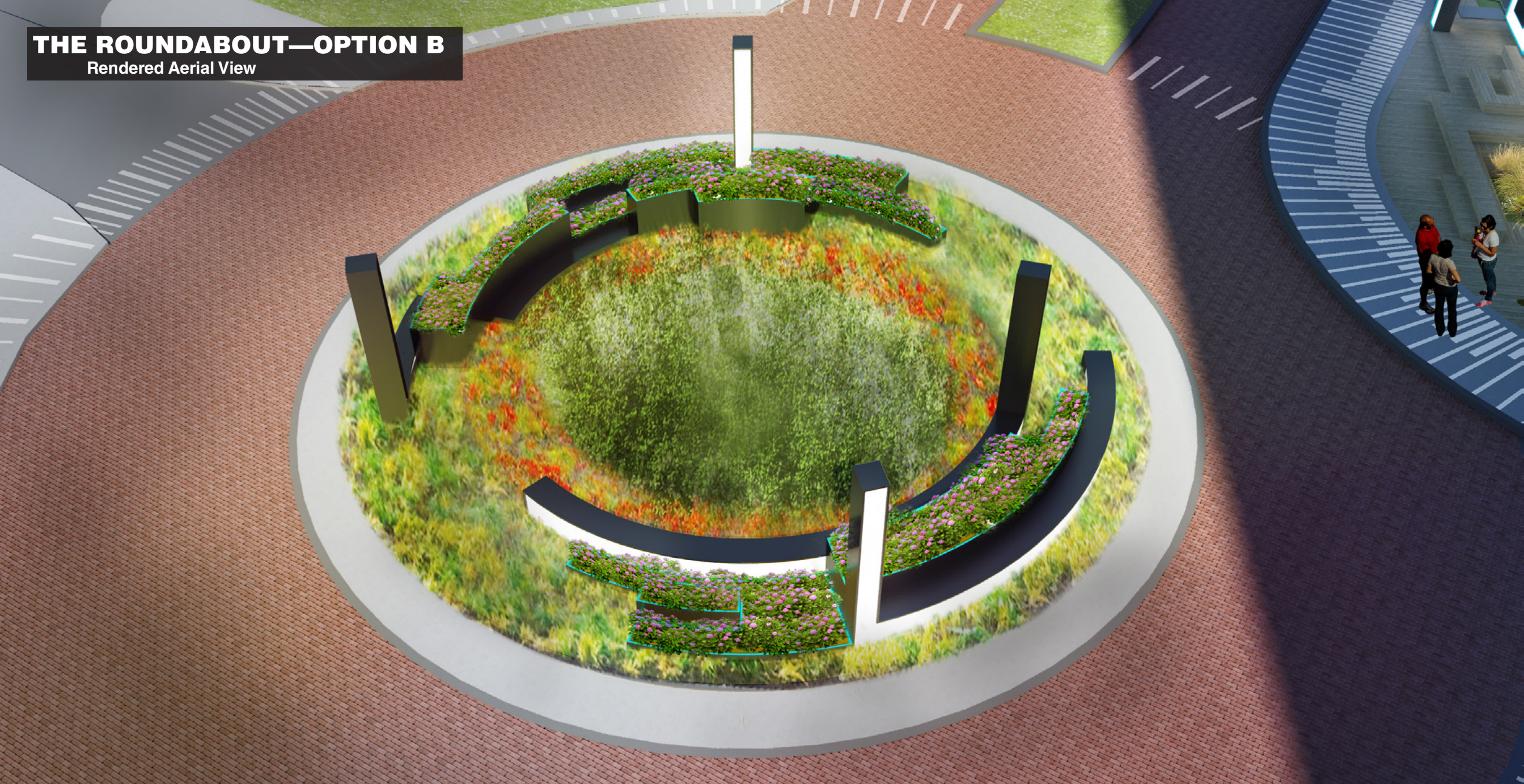
# THE ROUNDABOUT—OPTION A

Rendered Aerial View



# THE ROUNDABOUT—OPTION B

Rendered Aerial View



# THE ROUNDABOUT—OPTION A

Minimal Lighting Elements



# THE ROUNDABOUT—OPTION B

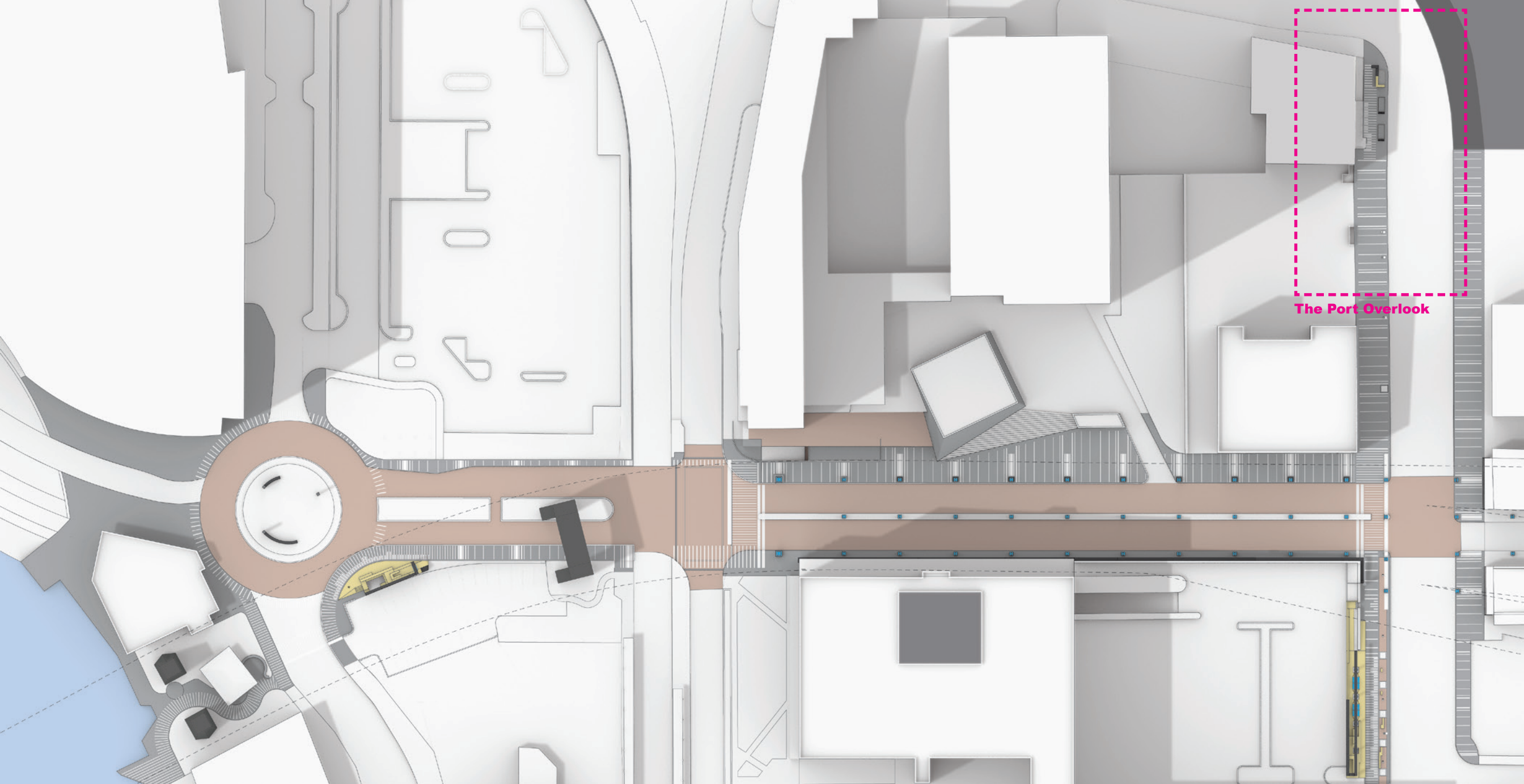
Minimal Lighting Elements + Planting Boxes



# THE MEETING POINT + ROUNDABOUT

Overview





The Port Overlook

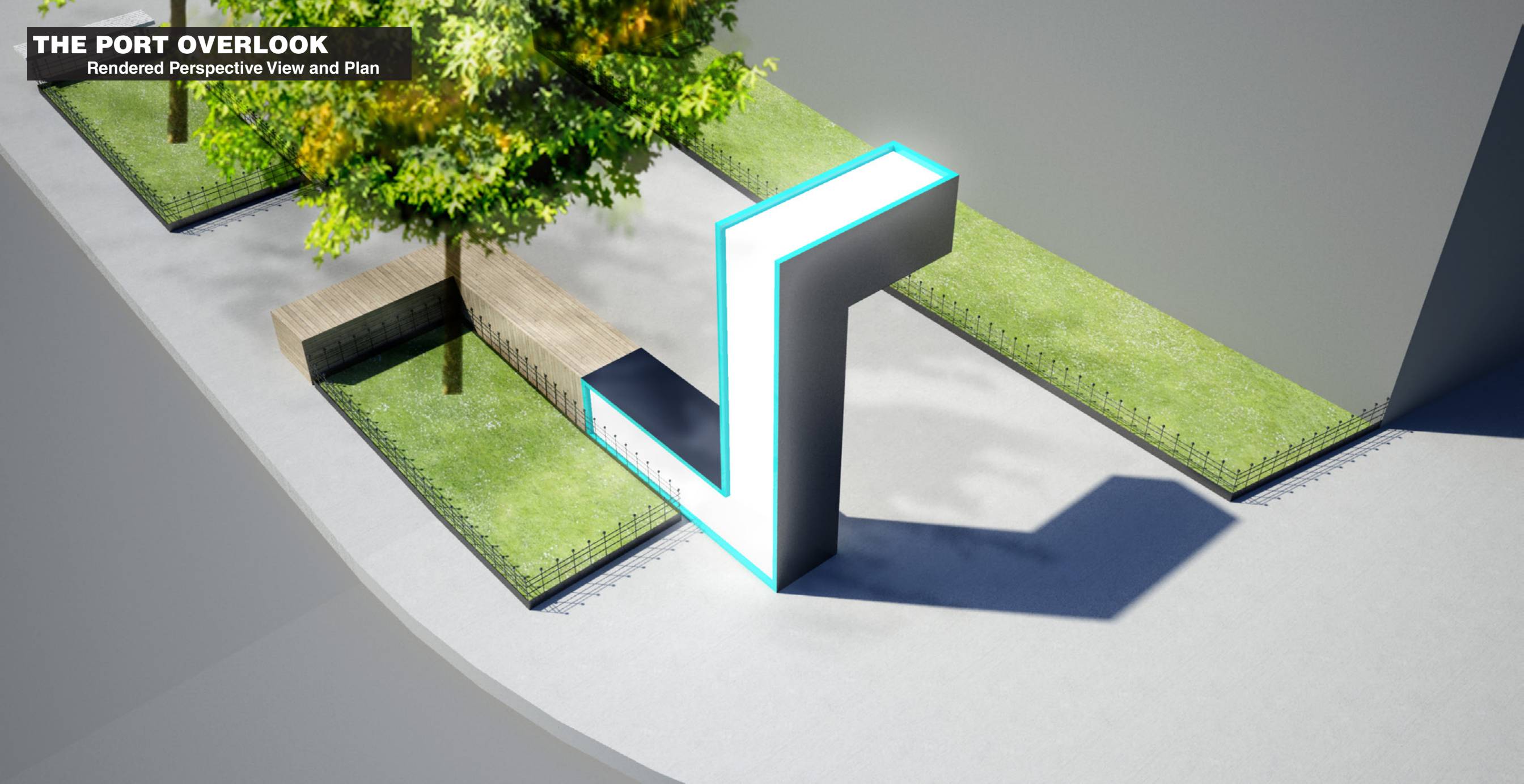


**Existing Conditions: Corner of Port Building**



# THE PORT OVERLOOK

Rendered Perspective View and Plan



**THE PORT OVERLOOK**  
Light Bar Element + Integrated Seating



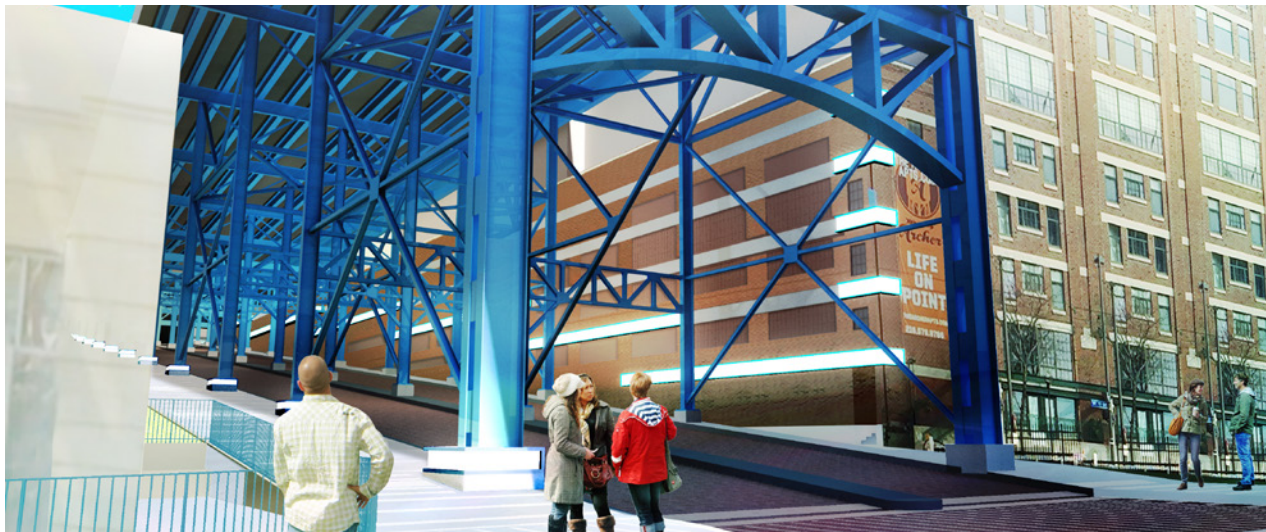
# PUNCTUATIONS



Oversized Seating Elements Integrated with Dramatic Lighting



Defined Pedestrian Zone through Surface Graphics and Dramatic Lighting



Light Bars Animate the Sites Topography + Light Boxes Animate the Bridge Structure



Meeting Point Swing and Seating with Integrated Lighting

# THE MAIN AVENUE CONNECTOR

Downtown Cleveland Main Avenue Bridge Underpass Design Development Report

