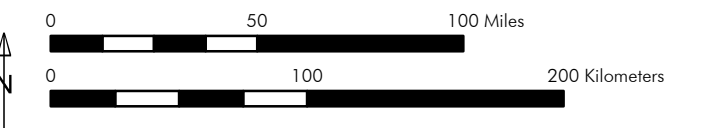


Paths: L:\Biblio\CleanLineEnergy\Maps\WDD\Region\Project_Description\2014_Dec_17\Fig_1_Project_Overview.mxd
 Dec 17, 2014

KEY:

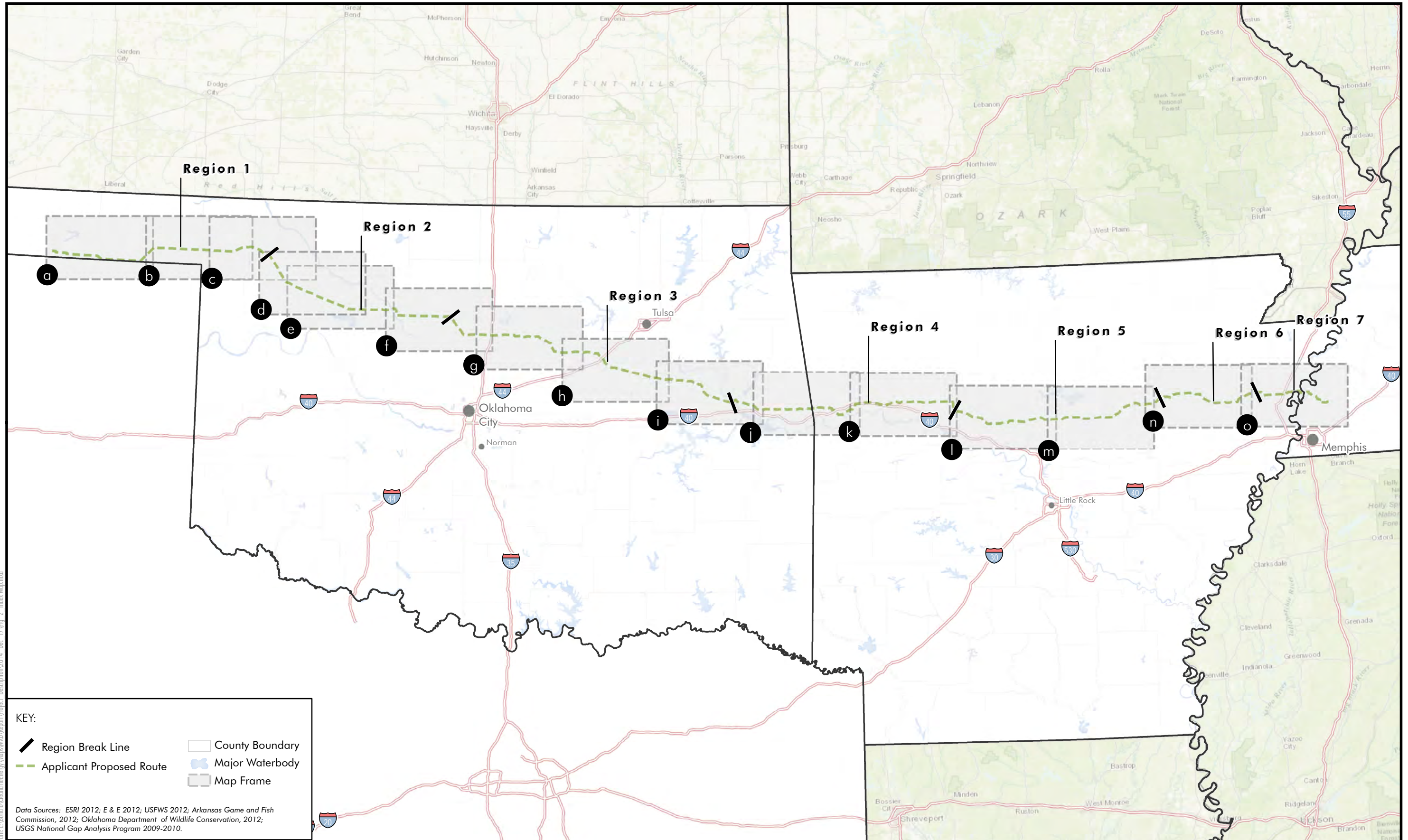
	Region Break Line		Arkansas Converter Station Alternative Siting Area
	Applicant Proposed Route		AC Interconnection Siting Area
	2-mile wide AC Collection System Alternatives		County Boundary
	Proposed Converter Station Siting Area		Water Body

Data Sources: ESRI 2012; E & E 2012; Esri, DeLorme, NAVTEQ, TomTom, Intermap, increment P Corp., GEBCO, USGS, FAO, NPS, NRCAN, GeoBase, IGN, Kadaster NL, Ordnance Survey, Esri Japan, METI, Esri China (Hong Kong), swisstopo, and the GIS User Community.

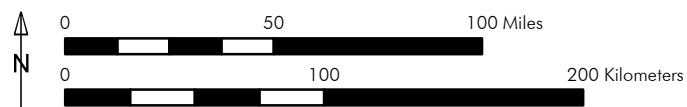


These maps were prepared in December 2014 at the request of the Department of Energy in support of the 1222 Part 2 Application for the Plains & Eastern Clean Line; all data is consistent with the Project Description (May 2014). The final location of the easement necessary for the project is subject to change based on the outcome of the environmental review process, land owner input, field survey, engineering and other factors. Clean Line is committed to working with landowners to minimize impacts of the project to their properties.

Figure 1
 Project Overview
 Plains & Eastern Clean Line
 Oklahoma, Arkansas and Tennessee



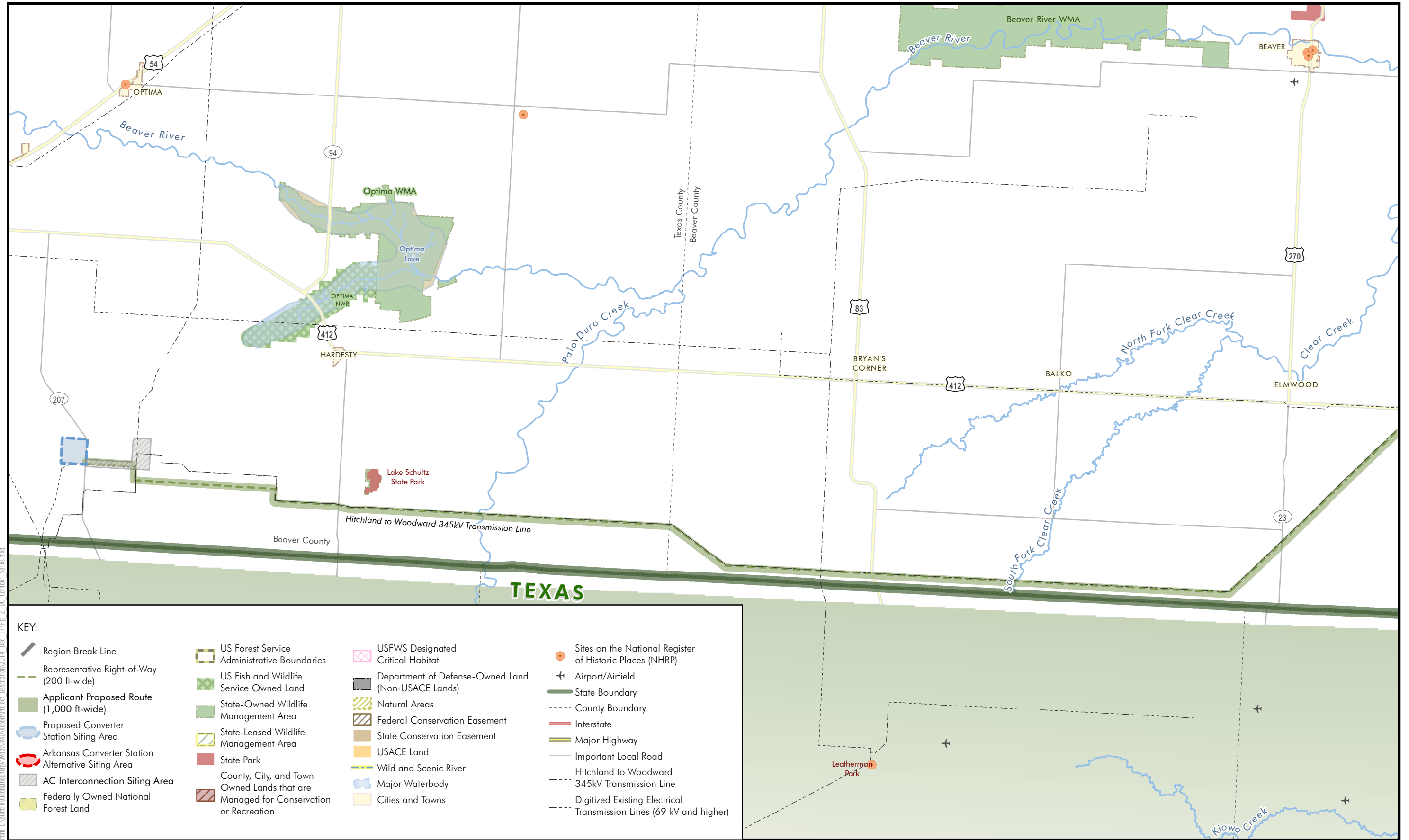
Path: L:\Biblio\CleanLineEnergy\Maps\WVD\Report\Project_Description\2014_Dec_17\Fig_2_Index_Map.mxd



The Proposed Route and Alternative Routes are preliminary and based upon desktop review. The Proposed Route and Alternative Routes will be revisited after field and engineering review.

These maps were prepared in December 2014 at the request of the Department of Energy in support of the 1222 Part 2 Application for the Plains & Eastern Clean Line; all data is consistent with the Project Description (May 2014). The final location of the easement necessary for the project is subject to change based on the outcome of the environmental review process, land owner input, field survey, engineering and other factors. Clean Line is committed to working with landowners to minimize impacts of the project to their properties.

Figure 2
Project Overview: Map Index
Plains & Eastern Clean Line
Oklahoma, Arkansas and Tennessee



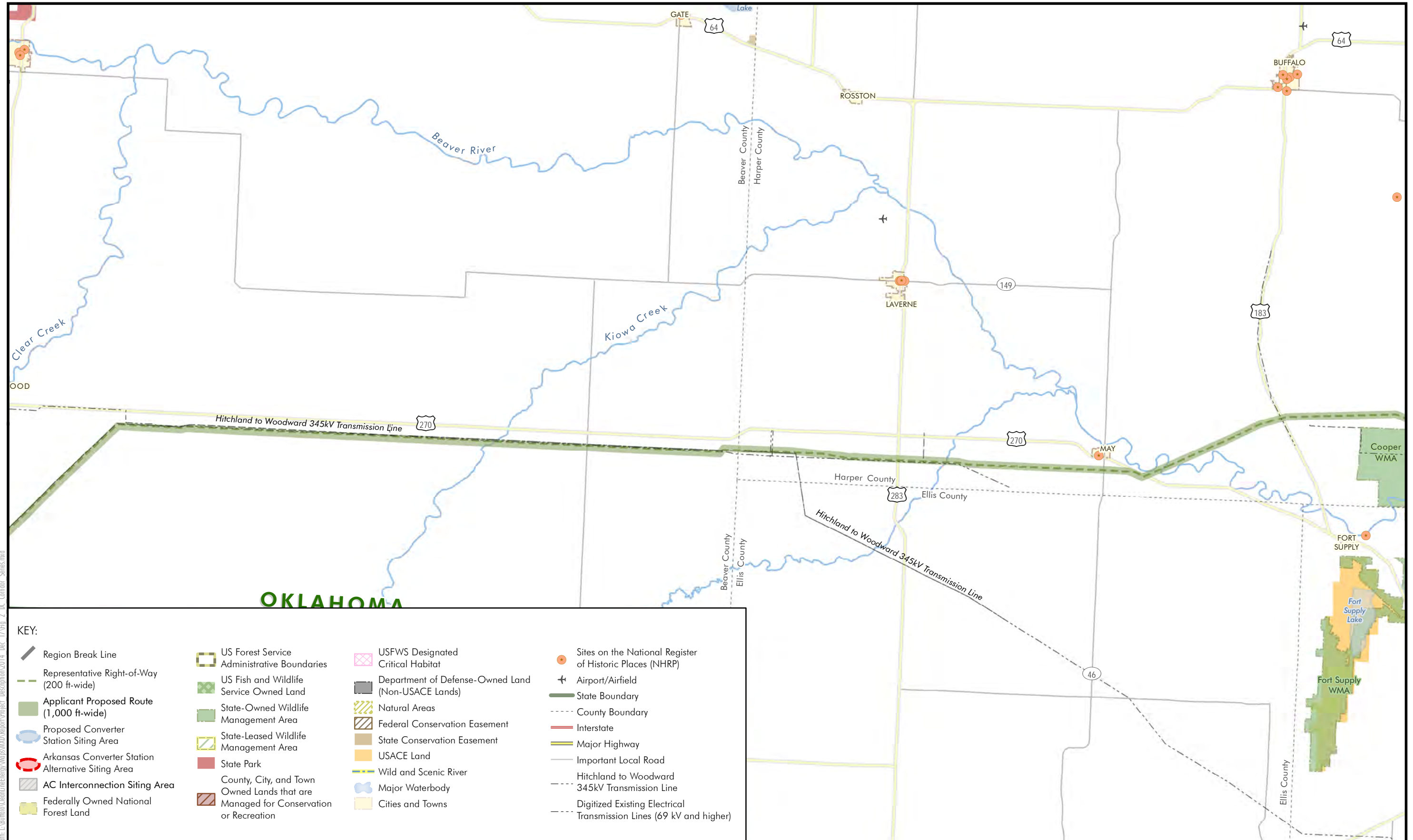
Path: L:\3010\10\CleanLineEnergyMap\WMA\Region\Project_Description\2014_Doc_17\Fig_2_DC_Corridor_Series.mxd



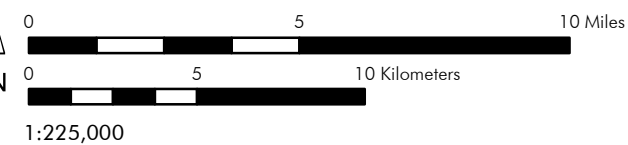
Data Sources: ESRI 2010 and 2012; USFS 2003, 2009a, 2009b and 2010; USFWS 2012a and 2012c; ODWC n.d. and 2012b; AGFC 2005 and 2013; TWRA 2007; DOE 2013; AHTD 2006; TDEC 2011; Oklahoma Tourism and Recreation Department 2013; ANHC n.d.(b) and n.d.(e); USDA Natural Resources Conservation Service (NRCS) n.d.; The Conservation Registry 2012; USACE Little Rock District and USACE Tulsa District, n.d.; NPS 2010; FAA 2010; BTS 2008; Clean Line 2013e and 2013 f

These maps were prepared in December 2014 at the request of the Department of Energy in support of the 1222 Part 2 Application for the Plains & Eastern Clean Line; all data is consistent with the Project Description (May 2014). The final location of the easement necessary for the project is subject to change based on the outcome of the environmental review process, land owner input, field survey, engineering and other factors. Clean Line is committed to working with landowners to minimize impacts of the project to their properties.

Figure 2a
Project Overview
Plains & Eastern Clean Line
Oklahoma, Arkansas and Tennessee



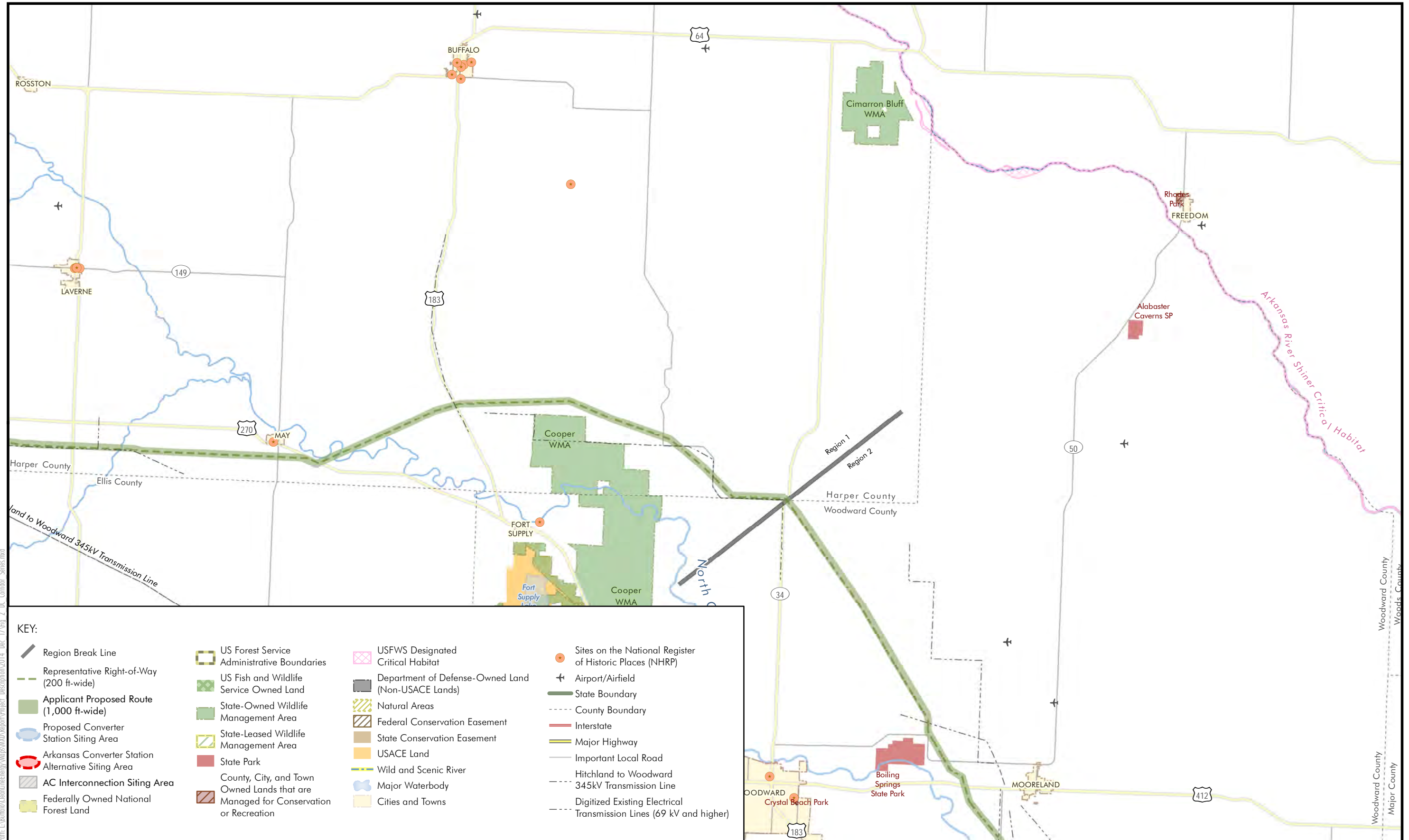
Path: L:\Biblio\CleanLineEnergyMap\WMD\Report\Project_Description\2014_Dec_17\Fig_2_DC_Corridor_Series.mxd



Data Sources: ESRI 2010 and 2012; USFS 2003, 2009a, 2009b and 2010; USFWS 2012a and 2012c; ODWC n.d. and 2012b; AGFC 2005 and 2013; TWRA 2007; DOE 2013; AHTD 2006; TDEC 2011; Oklahoma Tourism and Recreation Department 2013; ANHC n.d.(b) and n.d.(e); USDA Natural Resources Conservation Service (NRCS) n.d.; The Conservation Registry 2012; USACE Little Rock District and USACE Tulsa District, n.d.; NPS 2010; FAA 2010; BTS 2008; Clean Line 2013e and 2013 f

These maps were prepared in December 2014 at the request of the Department of Energy in support of the 1222 Part 2 Application for the Plains & Eastern Clean Line; all data is consistent with the Project Description (May 2014). The final location of the easement necessary for the project is subject to change based on the outcome of the environmental review process, land owner input, field survey, engineering and other factors. Clean Line is committed to working with landowners to minimize impacts of the project to their properties.

Figure 2b
Project Overview
Plains & Eastern Clean Line
Oklahoma, Arkansas and Tennessee



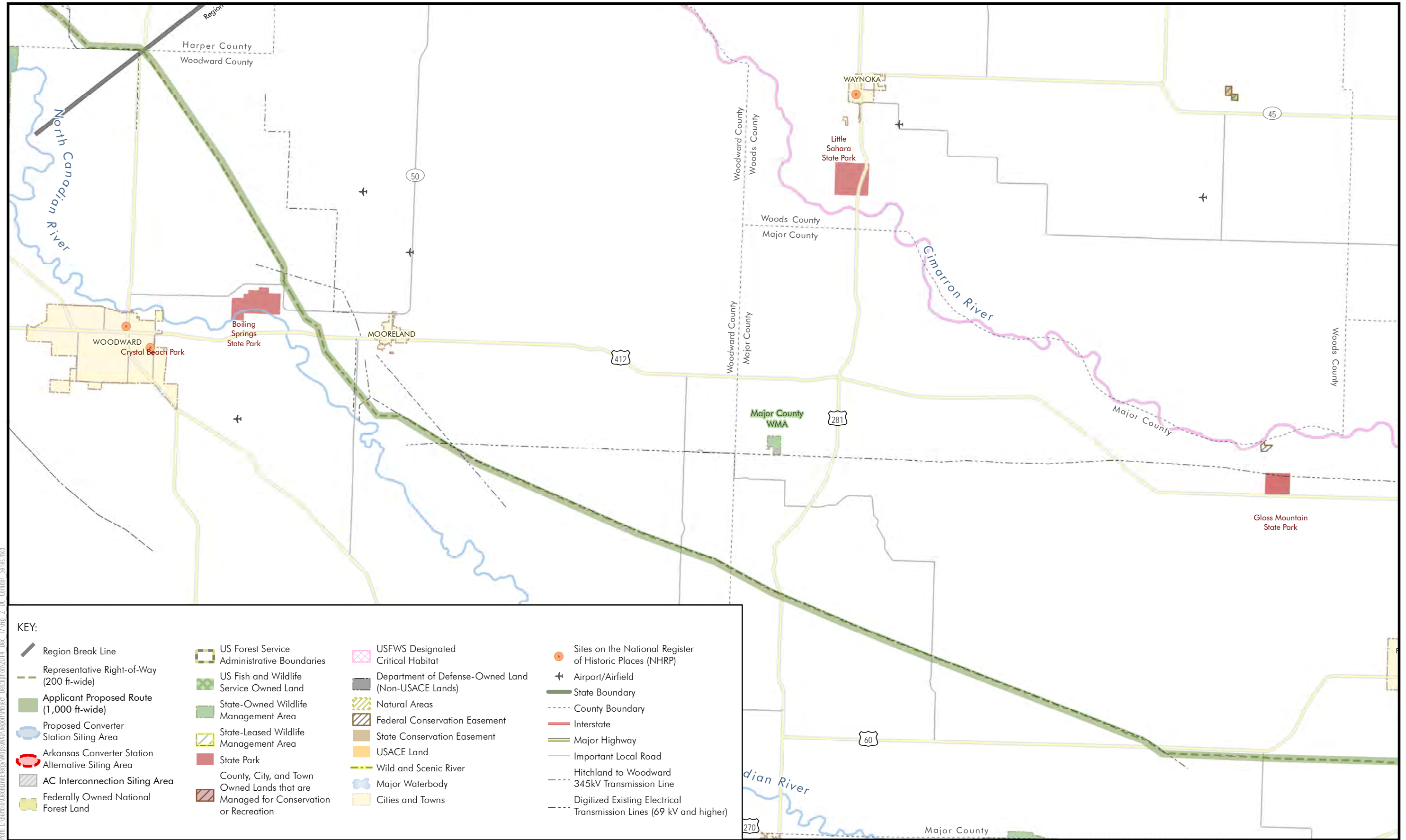
Path: L:\Biblio\CleanLineEnergyMaps\WMA_Report\Project_Description\2014_Dec_17\Fig_2_DC_Corridor_Series.mxd



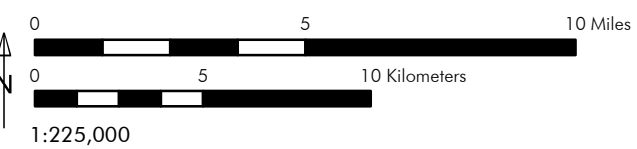
Data Sources: ESRI 2010 and 2012; USFS 2003, 2009a, 2009b and 2010; USFWS 2012a and 2012c; ODWC n.d. and 2012b; AGFC 2005 and 2013; TWRA 2007; DOE 2013; AHTD 2006; TDEC 2011; Oklahoma Tourism and Recreation Department 2013; ANHC n.d.(b) and n.d.(e); USDA Natural Resources Conservation Service (NRCS) n.d.; The Conservation Registry 2012; USACE Little Rock District and USACE Tulsa District, n.d.; NPS 2010; FAA 2010; BTS 2008; Clean Line 2013e and 2013 f

These maps were prepared in December 2014 at the request of the Department of Energy in support of the 1222 Part 2 Application for the Plains & Eastern Clean Line; all data is consistent with the Project Description (May 2014). The final location of the easement necessary for the project is subject to change based on the outcome of the environmental review process, land owner input, field survey, engineering and other factors. Clean Line is committed to working with landowners to minimize impacts of the project to their properties.

Figure 2c
Project Overview
Plains & Eastern Clean Line
Oklahoma, Arkansas and Tennessee



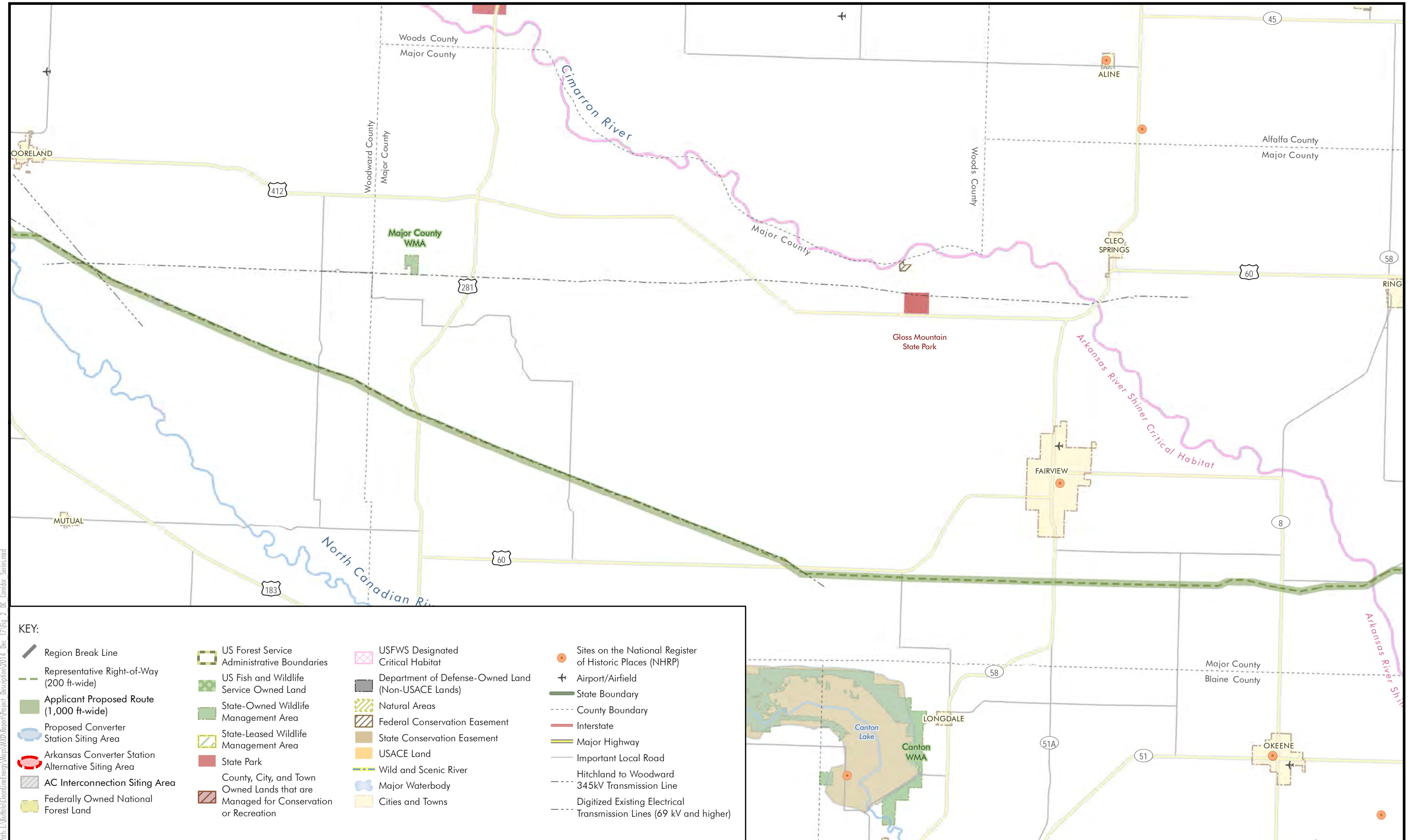
Path: L:\301\10\CleanLineEnergyMap\WMA_Report\Project_Description\2014 Dec 17\Fig_2_DC_Corridor_Series.mxd



Data Sources: ESRI 2010 and 2012; USFS 2003, 2009a, 2009b and 2010; USFWS 2012a and 2012c; ODWC n.d. and 2012b; AGFC 2005 and 2013; TWRA 2007; DOE 2013; AHTD 2006; TDEC 2011; Oklahoma Tourism and Recreation Department 2013; ANHC n.d.(b) and n.d.(e); USDA Natural Resources Conservation Service (NRCS) n.d.; The Conservation Registry 2012; USACE Little Rock District and USACE Tulsa District, n.d.; NPS 2010; FAA 2010; BTS 2008; Clean Line 2013e and 2013 f

These maps were prepared in December 2014 at the request of the Department of Energy in support of the 1222 Part 2 Application for the Plains & Eastern Clean Line; all data is consistent with the Project Description (May 2014). The final location of the easement necessary for the project is subject to change based on the outcome of the environmental review process, land owner input, field survey, engineering and other factors. Clean Line is committed to working with landowners to minimize impacts of the project to their properties.

Figure 2d
Project Overview
Plains & Eastern Clean Line
Oklahoma, Arkansas and Tennessee



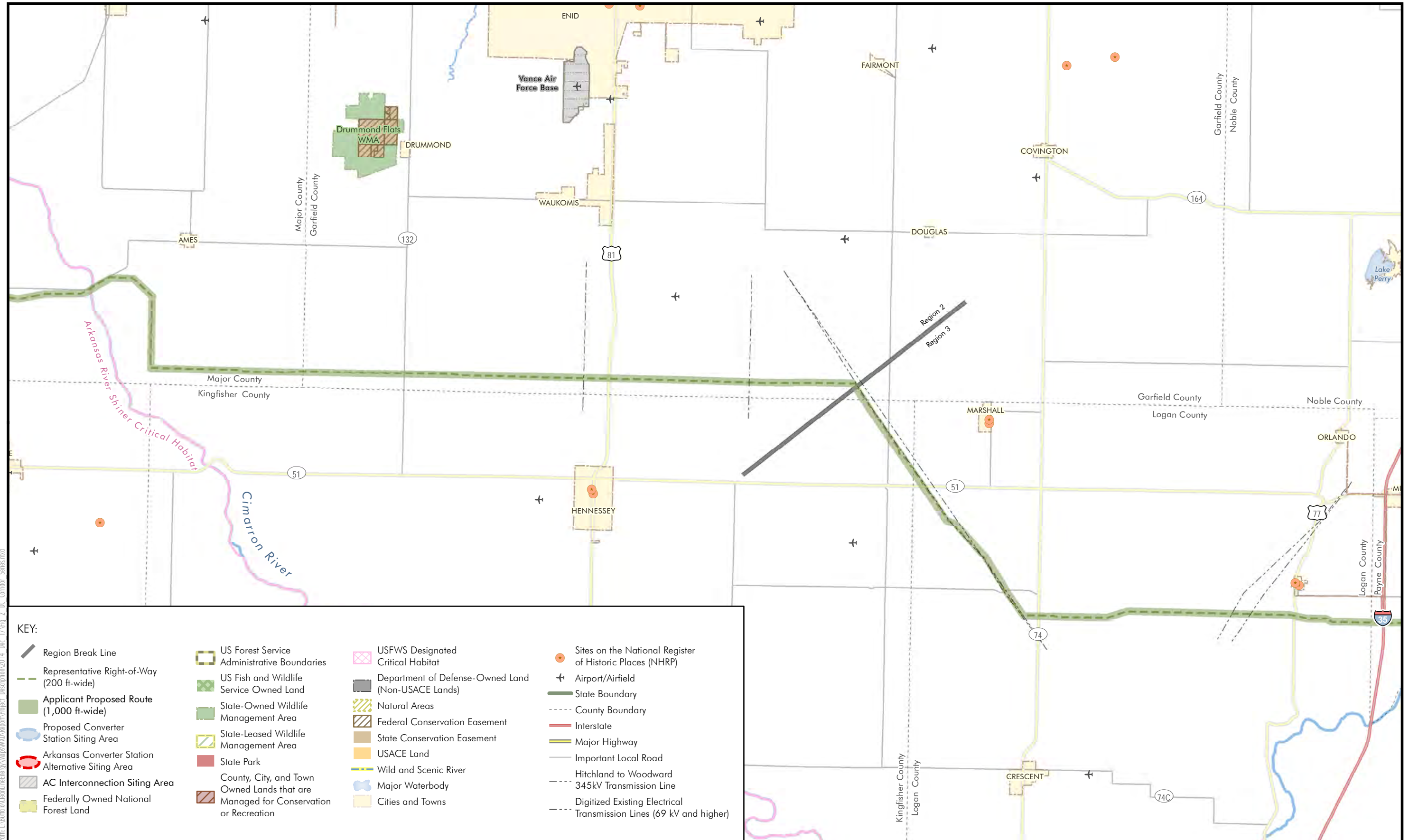
Path: L:\3011\3011\CleanLineEnergyMap\WMA_Reports\Project_Description\2014_Dec_17\Fig_2_DC_Corridor_Series.mxd



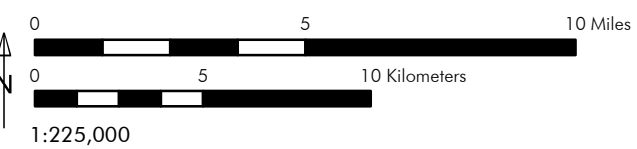
Data Sources: ESRI 2010 and 2012; USFS 2003, 2009a, 2009b and 2010; USFWS 2012a and 2012c; ODWC n.d. and 2012b; AGFC 2005 and 2013; TWRA 2007; DOE 2013; AHTD 2006; TDEC 2011; Oklahoma Tourism and Recreation Department 2013; ANHC n.d.(b) and n.d.(e); USDA Natural Resources Conservation Service (NRCS) n.d.; The Conservation Registry 2012; USACE Little Rock District and USACE Tulsa District, n.d.; NPS 2010; FAA 2010; BTS 2008; Clean Line 2013e and 2013 f

These maps were prepared in December 2014 at the request of the Department of Energy in support of the 1222 Part 2 Application for the Plains & Eastern Clean Line; all data is consistent with the Project Description (May 2014). The final location of the easement necessary for the project is subject to change based on the outcome of the environmental review process, land owner input, field survey, engineering and other factors. Clean Line is committed to working with landowners to minimize impacts of the project to their properties.

Figure 2e
Project Overview
Plains & Eastern Clean Line
Oklahoma, Arkansas and Tennessee



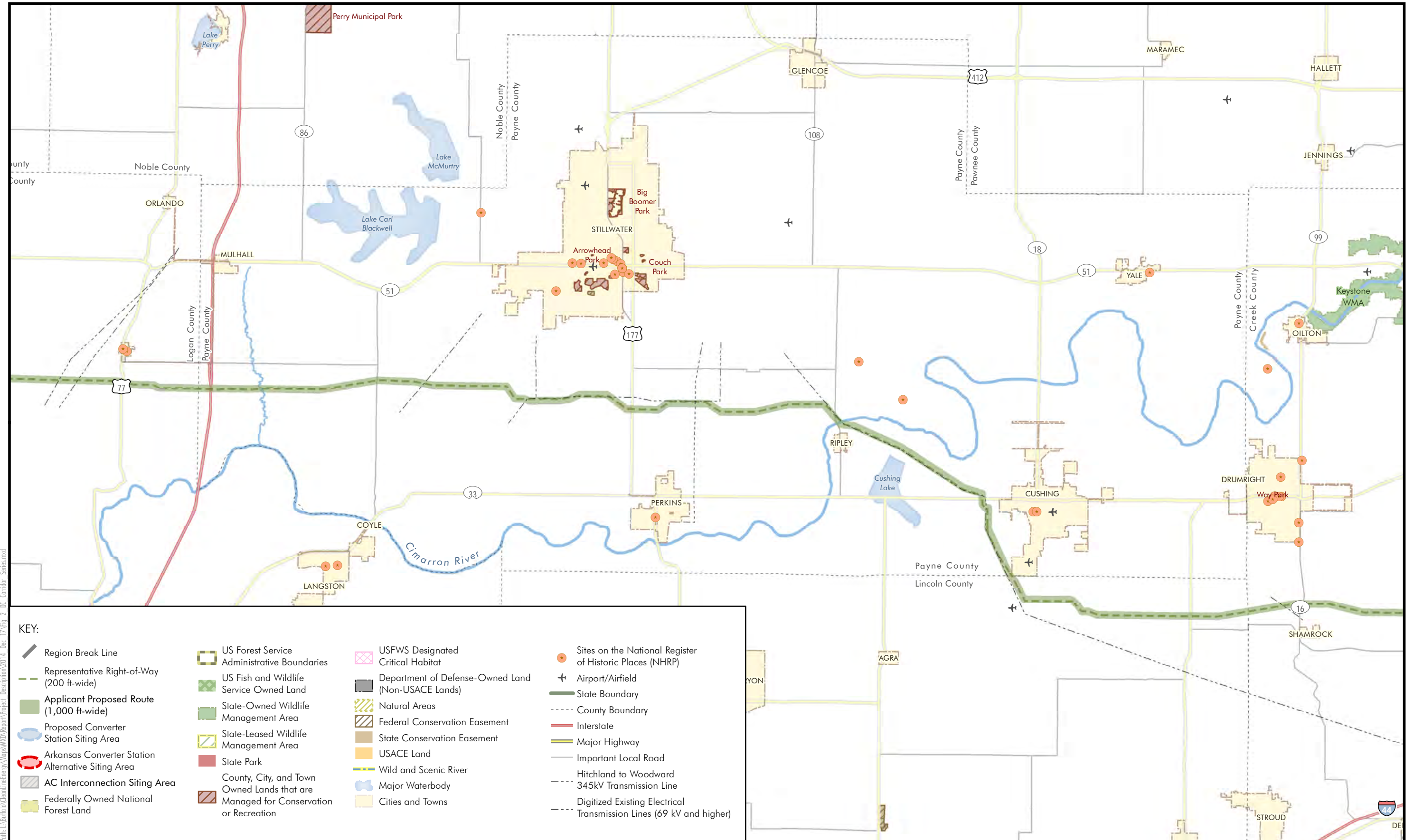
Path: L:\Biblio\CleanLineEnergyMaps\WMD_Report\Project_Description\2014_Dec_17\Fig_2_DC_Corridor_Series.mxd



Data Sources: ESRI 2010 and 2012; USFS 2003, 2009a, 2009b and 2010; USFWS 2012a and 2012c; ODWC n.d. and 2012b; AGFC 2005 and 2013; TWRA 2007; DOE 2013; AHTD 2006; TDEC 2011; Oklahoma Tourism and Recreation Department 2013; ANHC n.d.(b) and n.d.(e); USDA Natural Resources Conservation Service (NRCS) n.d.; The Conservation Registry 2012; USACE Little Rock District and USACE Tulsa District, n.d.; NPS 2010; FAA 2010; BTS 2008; Clean Line 2013e and 2013 f

These maps were prepared in December 2014 at the request of the Department of Energy in support of the 1222 Part 2 Application for the Plains & Eastern Clean Line; all data is consistent with the Project Description (May 2014). The final location of the easement necessary for the project is subject to change based on the outcome of the environmental review process, land owner input, field survey, engineering and other factors. Clean Line is committed to working with landowners to minimize impacts of the project to their properties.

Figure 2f
Project Overview
Plains & Eastern Clean Line
Oklahoma, Arkansas and Tennessee



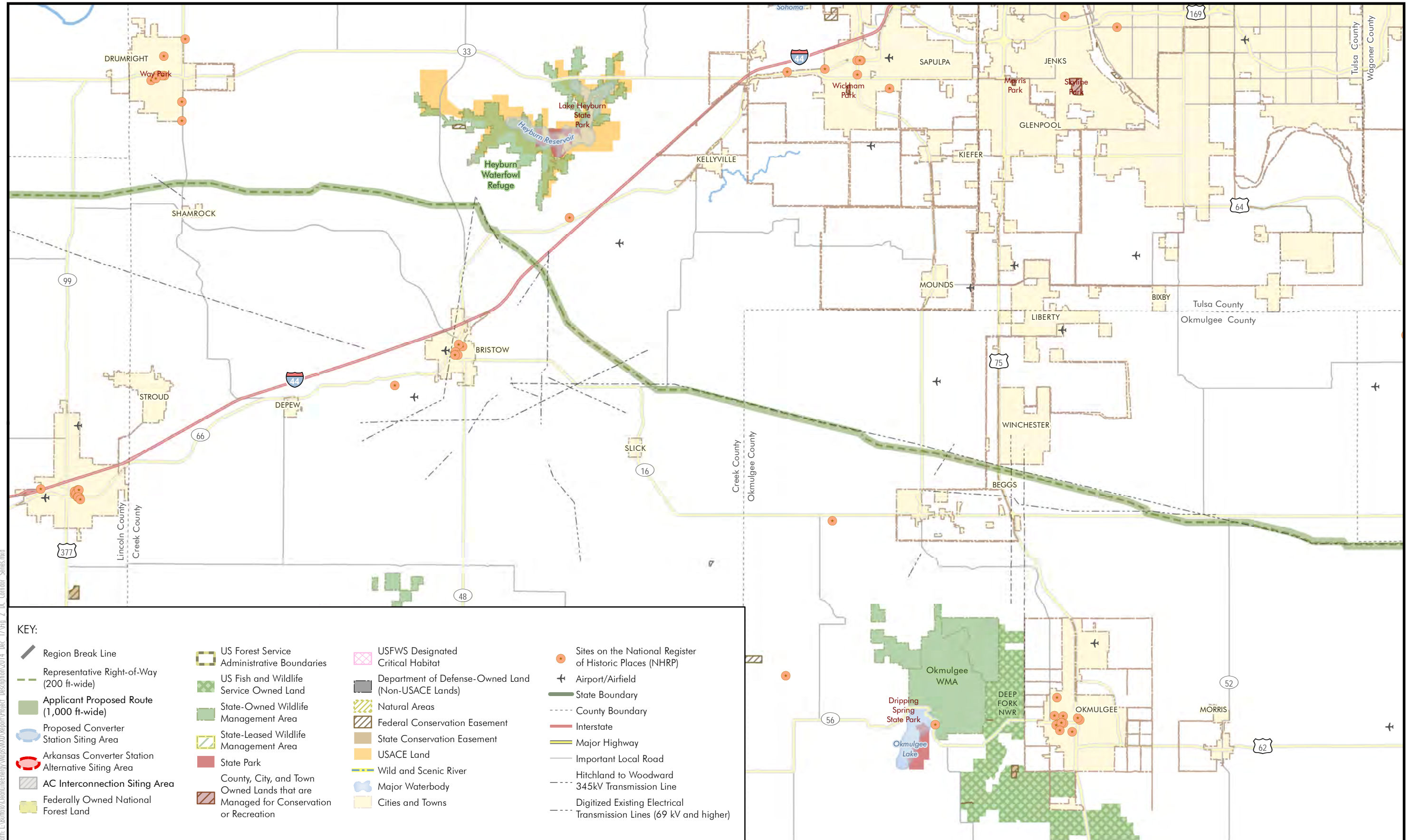
Path: L:\3016\3016\CleanLineEnergyMap\Map\MapSeries\MapSeries.mxd Dec 17, 2014 10:14 AM



Data Sources: ESRI 2010 and 2012; USFS 2003, 2009a, 2009b and 2010; USFWS 2012a and 2012c; ODWC n.d. and 2012b; AGFC 2005 and 2013; TWRA 2007; DOE 2013; AHTD 2006; TDEC 2011; Oklahoma Tourism and Recreation Department 2013; ANHC n.d.(b) and n.d.(e); USDA Natural Resources Conservation Service (NRCS) n.d.; The Conservation Registry 2012; USACE Little Rock District and USACE Tulsa District, n.d.; NPS 2010; FAA 2010; BTS 2008; Clean Line 2013e and 2013 f

These maps were prepared in December 2014 at the request of the Department of Energy in support of the 1222 Part 2 Application for the Plains & Eastern Clean Line; all data is consistent with the Project Description (May 2014). The final location of the easement necessary for the project is subject to change based on the outcome of the environmental review process, land owner input, field survey, engineering and other factors. Clean Line is committed to working with landowners to minimize impacts of the project to their properties.

Figure 2g
Project Overview
Plains & Eastern Clean Line
Oklahoma, Arkansas and Tennessee



Path: L:\Biblio\CleanLineEnergyMaps\WMD_Report\Project_Description\2014_Dec_17\Fig_2_DC_Corridor_Series.mxd

KEY:

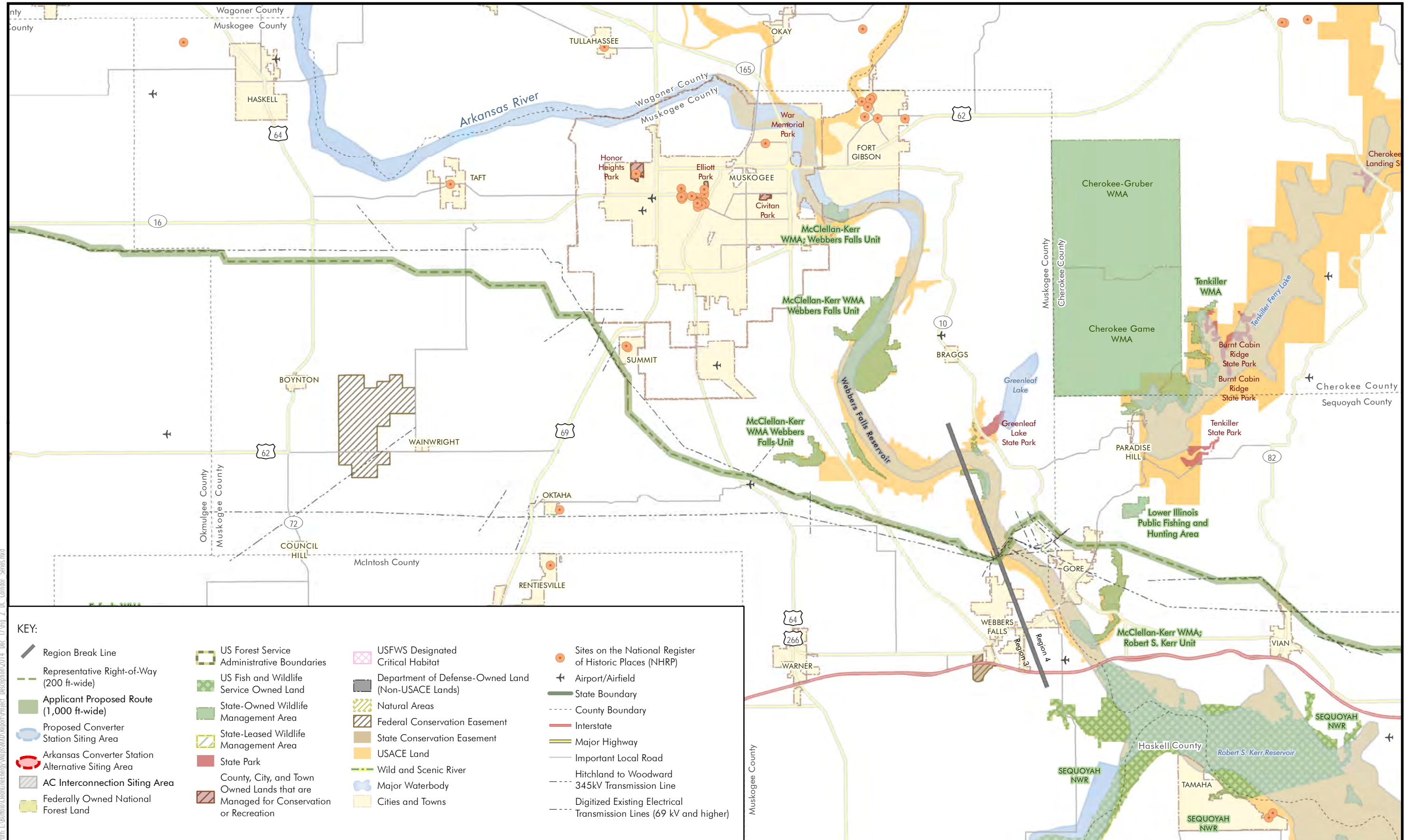
	Region Break Line		US Forest Service Administrative Boundaries		USFWS Designated Critical Habitat		Sites on the National Register of Historic Places (NHRP)
	Representative Right-of-Way (200 ft-wide)		US Fish and Wildlife Service Owned Land		Department of Defense-Owned Land (Non-USACE Lands)		Airport/Airfield
	Applicant Proposed Route (1,000 ft-wide)		State-Owned Wildlife Management Area		Natural Areas		State Boundary
	Proposed Converter Station Siting Area		State-Leased Wildlife Management Area		Federal Conservation Easement		County Boundary
	Arkansas Converter Station Alternative Siting Area		State Park		USACE Land		Interstate
	AC Interconnection Siting Area		County, City, and Town Owned Lands that are Managed for Conservation or Recreation		Wild and Scenic River		Major Highway
	Federally Owned National Forest Land				Major Waterbody		Important Local Road
					Hitchland to Woodward 345kV Transmission Line		Digitized Existing Electrical Transmission Lines (69 kV and higher)



Data Sources: ESRI 2010 and 2012; USFS 2003, 2009a, 2009b and 2010; USFWS 2012a and 2012c; ODWC n.d. and 2012b; AGFC 2005 and 2013; TWRA 2007; DOE 2013; AHTD 2006; TDEC 2011; Oklahoma Tourism and Recreation Department 2013; ANHC n.d.(b) and n.d.(e); USDA Natural Resources Conservation Service (NRCS) n.d.; The Conservation Registry 2012; USACE Little Rock District and USACE Tulsa District, n.d.; NPS 2010; FAA 2010; BTS 2008; Clean Line 2013e and 2013 f

These maps were prepared in December 2014 at the request of the Department of Energy in support of the 1222 Part 2 Application for the Plains & Eastern Clean Line; all data is consistent with the Project Description (May 2014). The final location of the easement necessary for the project is subject to change based on the outcome of the environmental review process, land owner input, field survey, engineering and other factors. Clean Line is committed to working with landowners to minimize impacts of the project to their properties.

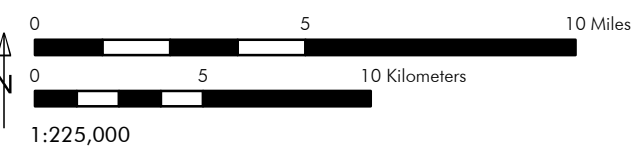
Figure 2h
Project Overview
Plains & Eastern Clean Line
Oklahoma, Arkansas and Tennessee



Path: L:\Biblio\CleanLineEnergyMap\Map9.mxd, Report\Project_Description\2014_Dec_17\Fig_2_DC_Corridor_Series.mxd

KEY:

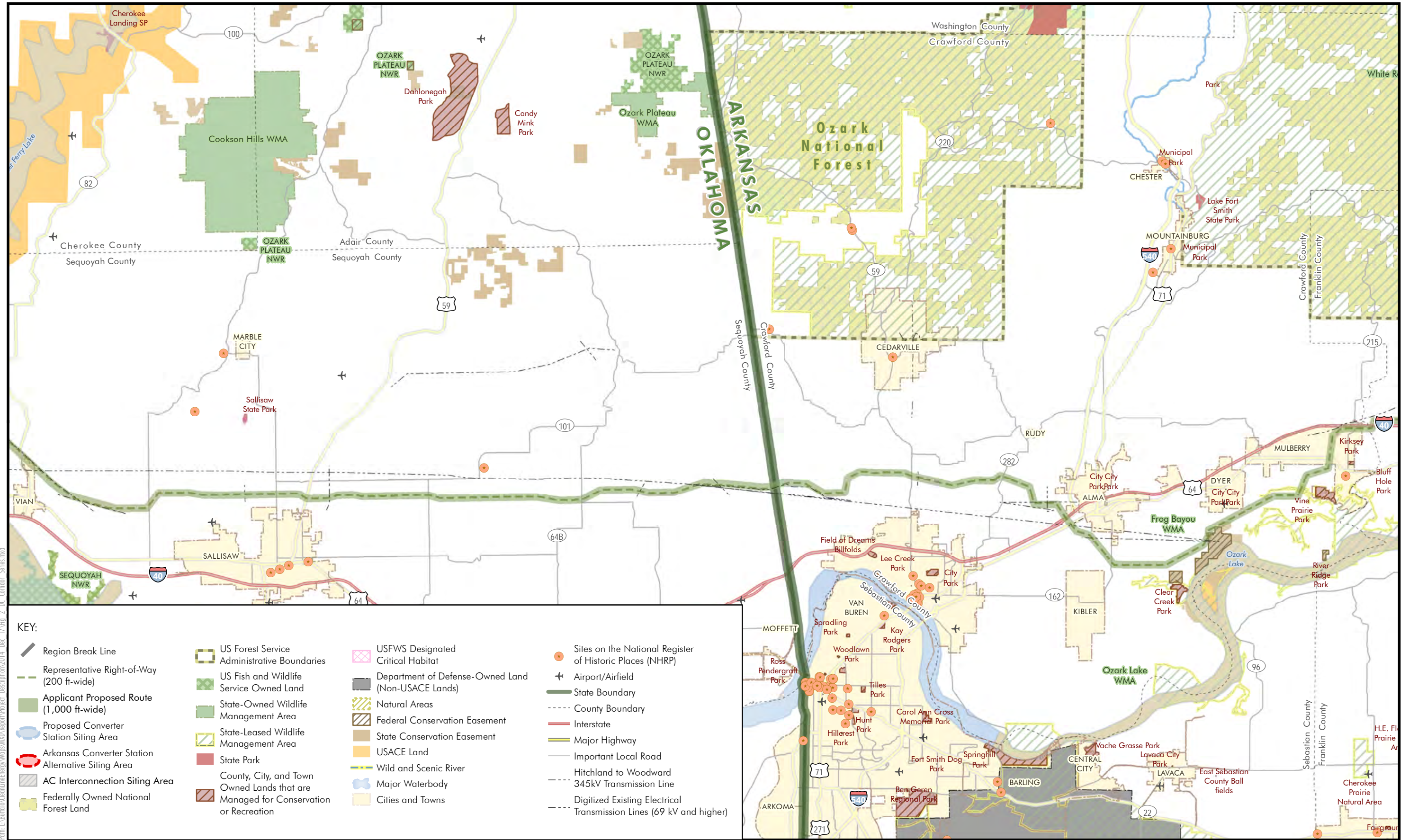
	Region Break Line		US Forest Service Administrative Boundaries		USFWS Designated Critical Habitat		Sites on the National Register of Historic Places (NHRP)
	Representative Right-of-Way (200 ft-wide)		US Fish and Wildlife Service Owned Land		Department of Defense-Owned Land (Non-USACE Lands)		Airport/Airfield
	Applicant Proposed Route (1,000 ft-wide)		State-Owned Wildlife Management Area		Natural Areas		State Boundary
	Proposed Converter Station Siting Area		State-Leased Wildlife Management Area		Federal Conservation Easement		County Boundary
	Arkansas Converter Station Alternative Siting Area		State Park		State Conservation Easement		Interstate
	AC Interconnection Siting Area		County, City, and Town Owned Lands that are Managed for Conservation or Recreation		USACE Land		Major Highway
	Federally Owned National Forest Land				Wild and Scenic River		Important Local Road
					Major Waterbody		Hitchland to Woodward 345kV Transmission Line
					Cities and Towns		Digitized Existing Electrical Transmission Lines (69 kV and higher)



Data Sources: ESRI 2010 and 2012; USFS 2003, 2009a, 2009b and 2010; USFWS 2012a and 2012c; ODWC n.d. and 2012b; AGFC 2005 and 2013; TWRA 2007; DOE 2013; AHTD 2006; TDEC 2011; Oklahoma Tourism and Recreation Department 2013; ANHC n.d.(b) and n.d.(e); USDA Natural Resources Conservation Service (NRCS) n.d.; The Conservation Registry 2012; USACE Little Rock District and USACE Tulsa District, n.d.; NPS 2010; FAA 2010; BTS 2008; Clean Line 2013e and 2013 f

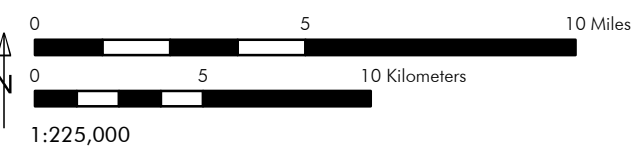
These maps were prepared in December 2014 at the request of the Department of Energy in support of the 1222 Part 2 Application for the Plains & Eastern Clean Line; all data is consistent with the Project Description (May 2014). The final location of the easement necessary for the project is subject to change based on the outcome of the environmental review process, land owner input, field survey, engineering and other factors. Clean Line is committed to working with landowners to minimize impacts of the project to their properties.

Figure 2i
Project Overview
Plains & Eastern Clean Line
Oklahoma, Arkansas and Tennessee



Path: L:\30110\CleanLineEnergyMap\WMD_Report\Project_Description\2014 Dec 17\Fig_2_DC_Corridor_Series.mxd

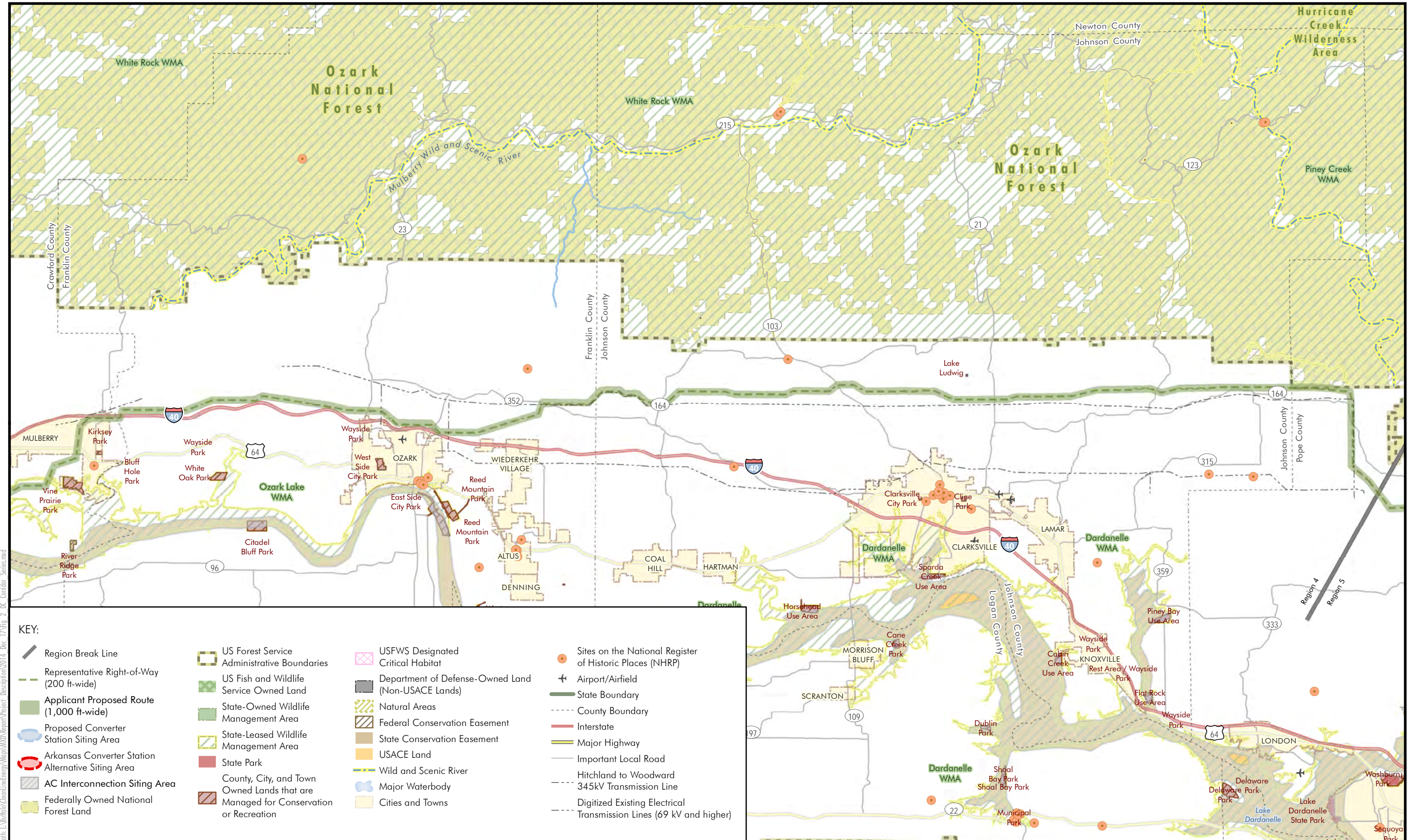
- KEY:**
- Region Break Line
 - Representative Right-of-Way (200 ft-wide)
 - Applicant Proposed Route (1,000 ft-wide)
 - Proposed Converter Station Siting Area
 - Arkansas Converter Station Alternative Siting Area
 - AC Interconnection Siting Area
 - Federally Owned National Forest Land
 - US Forest Service Administrative Boundaries
 - US Fish and Wildlife Service Owned Land
 - State-Owned Wildlife Management Area
 - State-Leased Wildlife Management Area
 - State Park
 - County, City, and Town Owned Lands that are Managed for Conservation or Recreation
 - USFWS Designated Critical Habitat
 - Department of Defense-Owned Land (Non-USACE Lands)
 - Natural Areas
 - Federal Conservation Easement
 - State Conservation Easement
 - USACE Land
 - Wild and Scenic River
 - Major Waterbody
 - Sites on the National Register of Historic Places (NHRP)
 - Airport/Airfield
 - State Boundary
 - County Boundary
 - Interstate
 - Major Highway
 - Important Local Road
 - Hitchland to Woodward 345kV Transmission Line
 - Digitized Existing Electrical Transmission Lines (69 kV and higher)



Data Sources: ESRI 2010 and 2012; USFS 2003, 2009a, 2009b and 2010; USFWS 2012a and 2012c; ODWC n.d. and 2012b; AGFC 2005 and 2013; TWRA 2007; DOE 2013; AHTD 2006; TDEC 2011; Oklahoma Tourism and Recreation Department 2013; ANHC n.d.(b) and n.d.(e); USDA Natural Resources Conservation Service (NRCS) n.d.; The Conservation Registry 2012; USACE Little Rock District and USACE Tulsa District, n.d.; NPS 2010; FAA 2010; BTS 2008; Clean Line 2013e and 2013 f

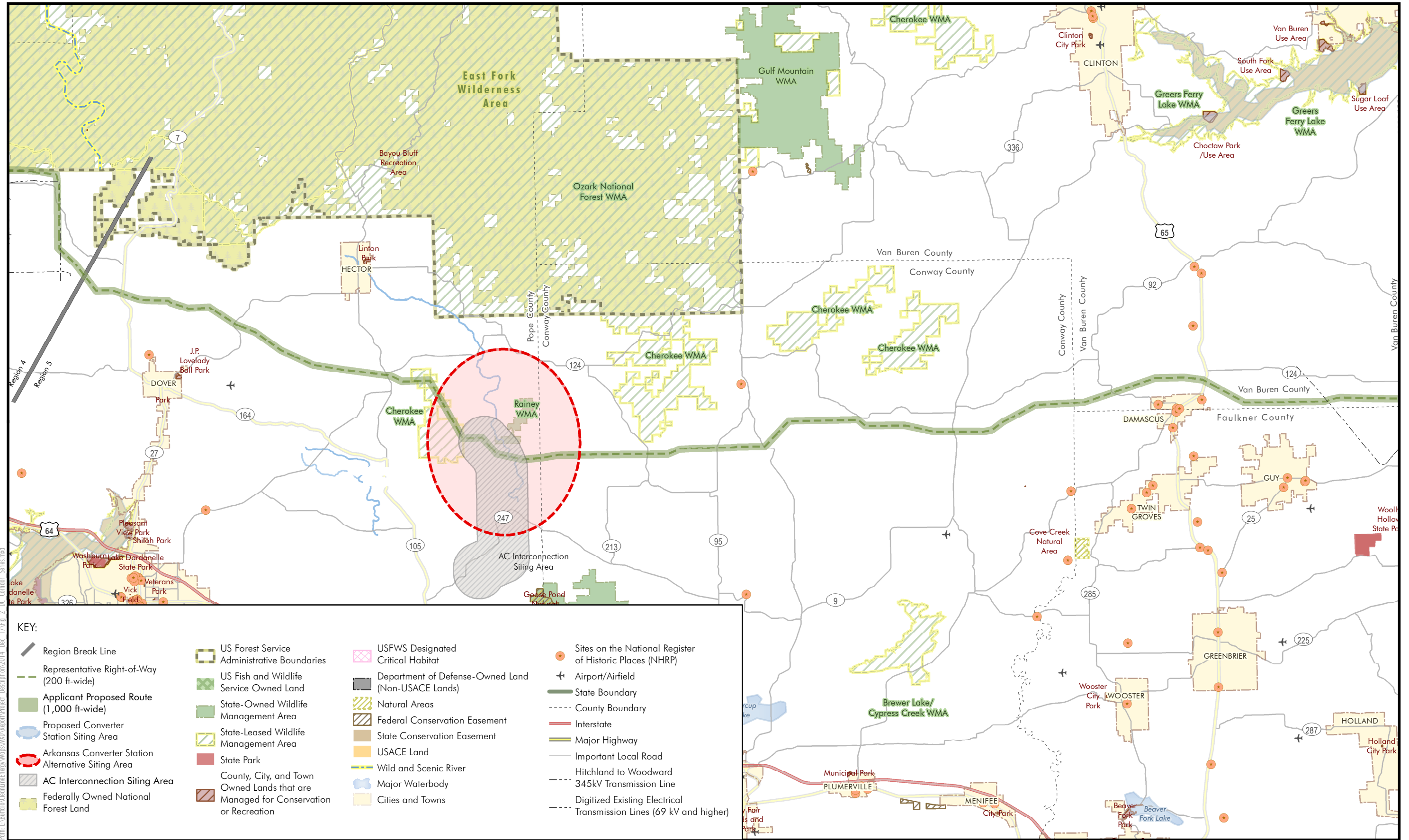
These maps were prepared in December 2014 at the request of the Department of Energy in support of the 1222 Part 2 Application for the Plains & Eastern Clean Line; all data is consistent with the Project Description (May 2014). The final location of the easement necessary for the project is subject to change based on the outcome of the environmental review process, land owner input, field survey, engineering and other factors. Clean Line is committed to working with landowners to minimize impacts of the project to their properties.

Figure 2j
Project Overview
Plains & Eastern Clean Line
Oklahoma, Arkansas and Tennessee



Path: L:\Biblio\CleanLineEnergyWays\MOA_Report\Project_Description\2014 Dec 17\Fig_2_DC_Corridor_Series.mxd

Figure 2k
Project Overview
Plains & Eastern Clean Line
Oklahoma, Arkansas and Tennessee



KEY:

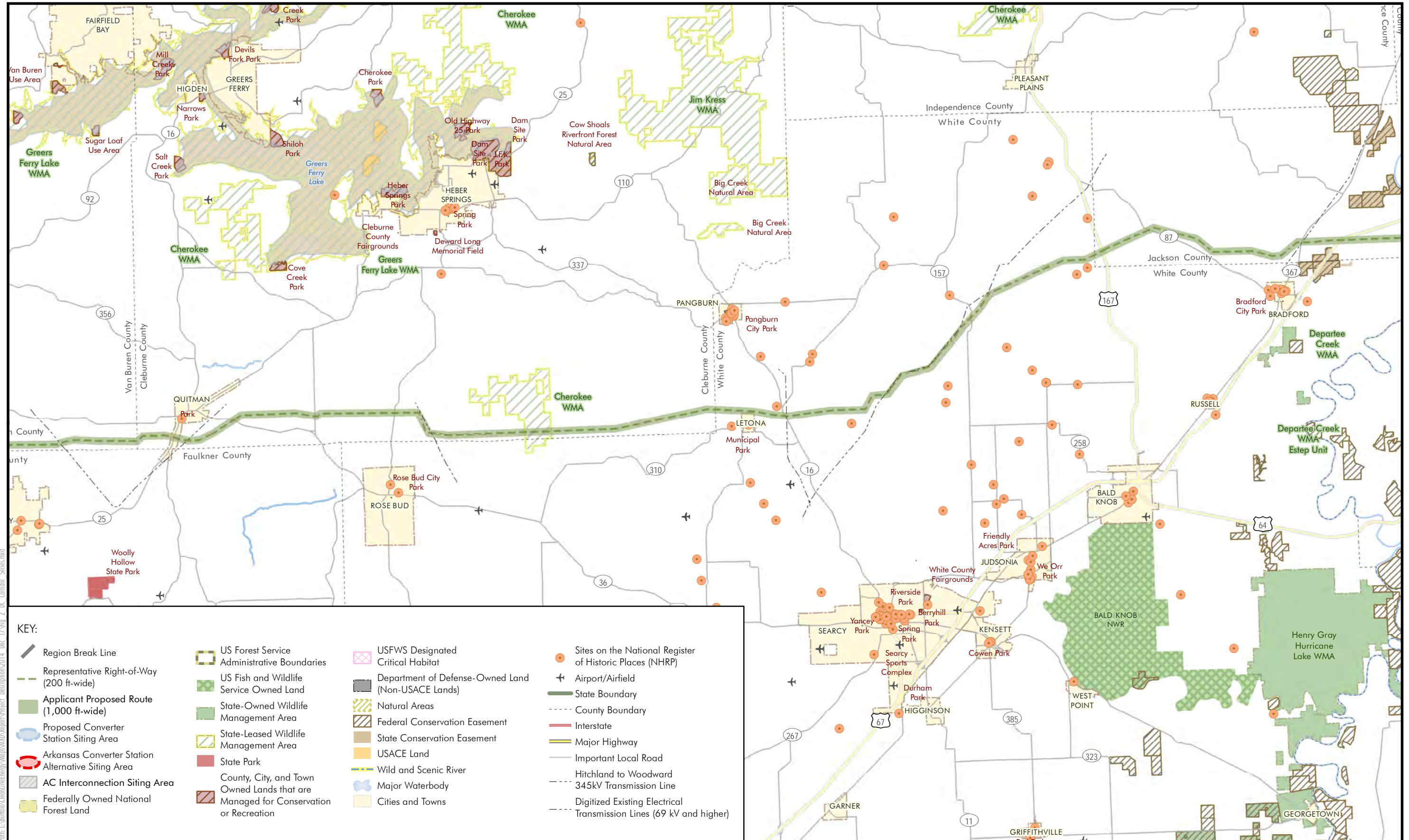
	Region Break Line		US Forest Service Administrative Boundaries		USFWS Designated Critical Habitat		Department of Defense-Owned Land (Non-USACE Lands)		Sites on the National Register of Historic Places (NHRP)
	Representative Right-of-Way (200 ft-wide)		US Fish and Wildlife Service Owned Land		Natural Areas		Federal Conservation Easement		Airport/Airfield
	Applicant Proposed Route (1,000 ft-wide)		State-Owned Wildlife Management Area		State Conservation Easement		USACE Land		State Boundary
	Proposed Converter Station Siting Area		State-Leased Wildlife Management Area		Wild and Scenic River		Major Highway		County Boundary
	Arkansas Converter Station Alternative Siting Area		State Park		Major Waterbody		Interstate		Important Local Road
	AC Interconnection Siting Area		County, City, and Town Owned Lands that are Managed for Conservation or Recreation		Cities and Towns		Hitchland to Woodward 345kV Transmission Line		Digitized Existing Electrical Transmission Lines (69 kV and higher)
	Federally Owned National Forest Land								



Data Sources: ESRI 2010 and 2012; USFS 2003, 2009a, 2009b and 2010; USFWS 2012a and 2012c; ODWC n.d. and 2012b; AGFC 2005 and 2013; TWRA 2007; DOE 2013; AHTD 2006; TDEC 2011; Oklahoma Tourism and Recreation Department 2013; ANHC n.d.(b) and n.d.(e); USDA Natural Resources Conservation Service (NRCS) n.d.; The Conservation Registry 2012; USACE Little Rock District and USACE Tulsa District, n.d.; NPS 2010; FAA 2010; BTS 2008; Clean Line 2013e and 2013 f

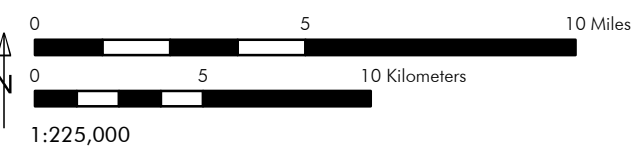
These maps were prepared in December 2014 at the request of the Department of Energy in support of the 1222 Part 2 Application for the Plains & Eastern Clean Line; all data is consistent with the Project Description (May 2014). The final location of the easement necessary for the project is subject to change based on the outcome of the environmental review process, land owner input, field survey, engineering and other factors. Clean Line is committed to working with landowners to minimize impacts of the project to their properties.

Figure 21
Project Overview
Plains & Eastern Clean Line
Oklahoma, Arkansas and Tennessee



Path: L:\3014\3014\CleanLineEnergyMap\WMD\Report\Project_Description\2014 Dec 17\Fig. 2. DC Corridor_Series.mxd

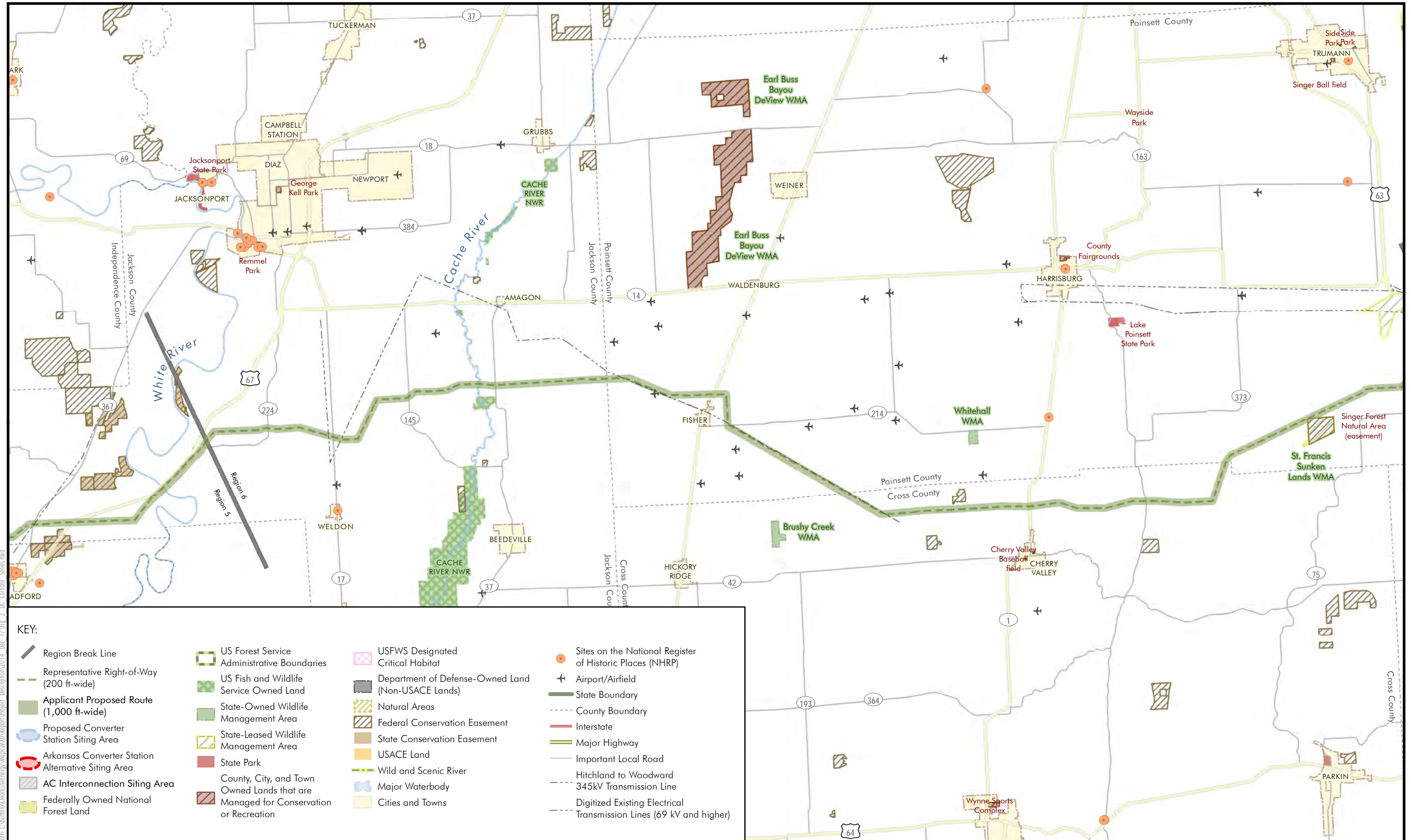
KEY:



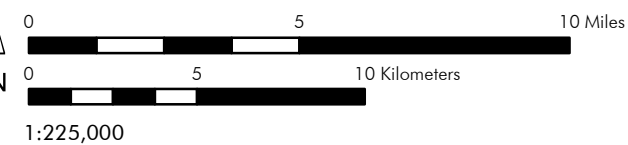
Data Sources: ESRI 2010 and 2012; USFS 2003, 2009a, 2009b and 2010; USFWS 2012a and 2012c; ODWC n.d. and 2012b; AGFC 2005 and 2013; TWRA 2007; DOE 2013; AHTD 2006; TDEC 2011; Oklahoma Tourism and Recreation Department 2013; ANHC n.d.(b) and n.d.(e); USDA Natural Resources Conservation Service (NRCS) n.d.; The Conservation Registry 2012; USACE Little Rock District and USACE Tulsa District, n.d.; NPS 2010; FAA 2010; BTS 2008; Clean Line 2013e and 2013 f

These maps were prepared in December 2014 at the request of the Department of Energy in support of the 1222 Part 2 Application for the Plains & Eastern Clean Line; all data is consistent with the Project Description (May 2014). The final location of the easement necessary for the project is subject to change based on the outcome of the environmental review process, land owner input, field survey, engineering and other factors. Clean Line is committed to working with landowners to minimize impacts of the project to their properties.

Figure 2m
Project Overview
Plains & Eastern Clean Line
Oklahoma, Arkansas and Tennessee



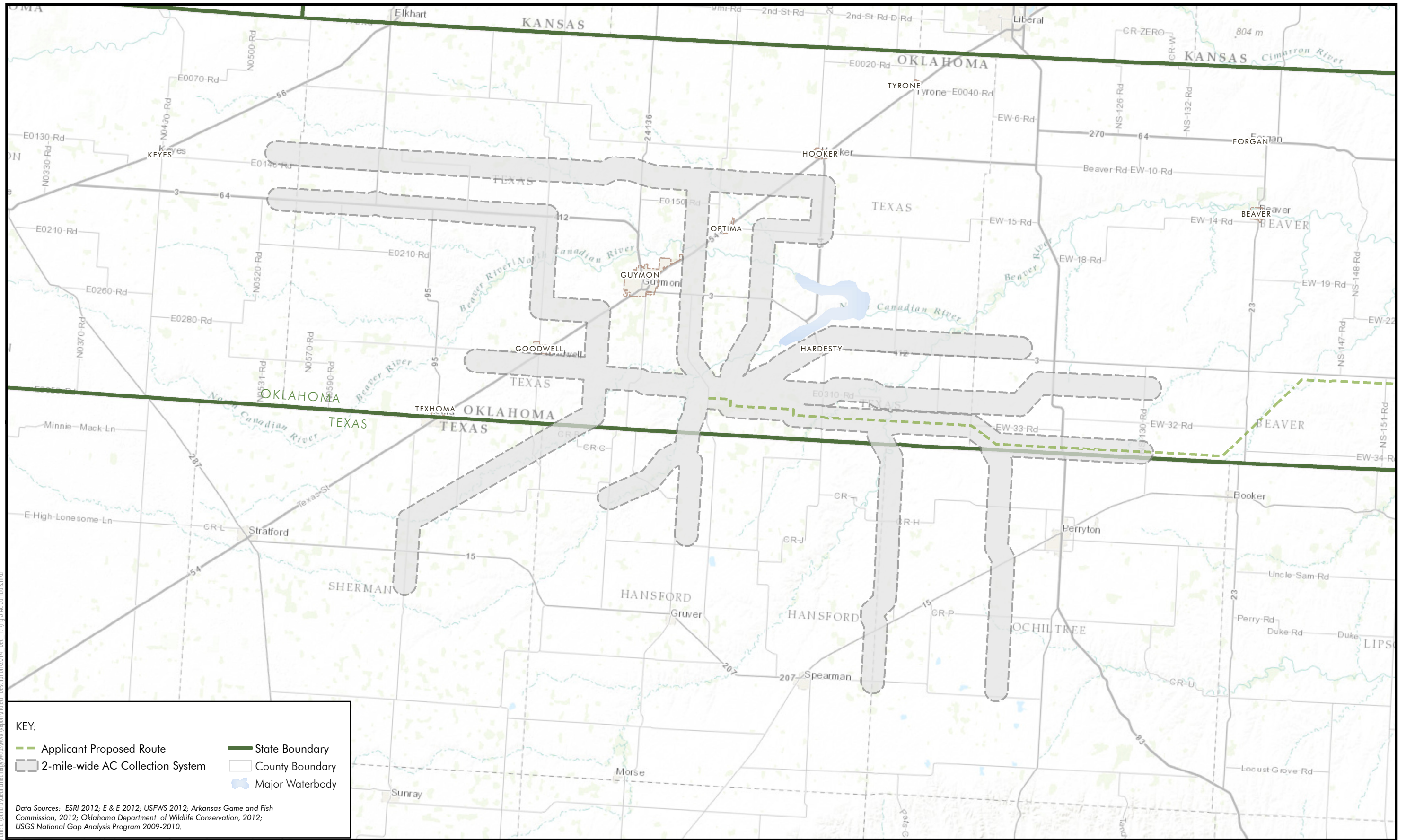
Path: L:\3014\3014\CleanLineEnergyMaps\WMD\Report\Project_Description\2014 Dec 17\Fig. 2 DC Corridor_Series.mxd



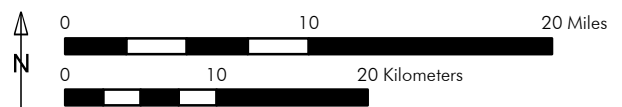
Data Sources: ESRI 2010 and 2012; USFS 2003, 2009a, 2009b and 2010; USFWS 2012a and 2012c; ODWC n.d. and 2012b; AGFC 2005 and 2013; TWRA 2007; DOE 2013; AHTD 2006; TDEC 2011; Oklahoma Tourism and Recreation Department 2013; ANHC n.d.(b) and n.d.(e); USDA Natural Resources Conservation Service (NRCS) n.d.; The Conservation Registry 2012; USACE Little Rock District and USACE Tulsa District, n.d.; NPS 2010; FAA 2010; BTS 2008; Clean Line 2013e and 2013 f

These maps were prepared in December 2014 at the request of the Department of Energy in support of the 1222 Part 2 Application for the Plains & Eastern Clean Line; all data is consistent with the Project Description (May 2014). The final location of the easement necessary for the project is subject to change based on the outcome of the environmental review process, land owner input, field survey, engineering and other factors. Clean Line is committed to working with landowners to minimize impacts of the project to their properties.

Figure 2n
Project Overview
Plains & Eastern Clean Line
Oklahoma, Arkansas and Tennessee



Path: L:\Biblio\CleanLineEnergyMaps\W03\Report\Project_Description\2014_Dec_17\Fig_3.AC_Condors.mxd



The Proposed Route and Alternative Routes are preliminary and based upon desktop review. The Proposed Route and Alternative Routes will be revisited after field and engineering review.

These maps were prepared in December 2014 at the request of the Department of Energy in support of the 1222 Part 2 Application for the Plains & Eastern Clean Line; all data is consistent with the Project Description (May 2014). The final location of the easement necessary for the project is subject to change based on the outcome of the environmental review process, land owner input, field survey, engineering and other factors. Clean Line is committed to working with landowners to minimize impacts of the project to their properties.

Figure 3
AC Alternatives: Map Index
Plains & Eastern Clean Line
Oklahoma, Arkansas, Tennessee and Texas