



Injury Facts

Press Briefing: 2016 Edition

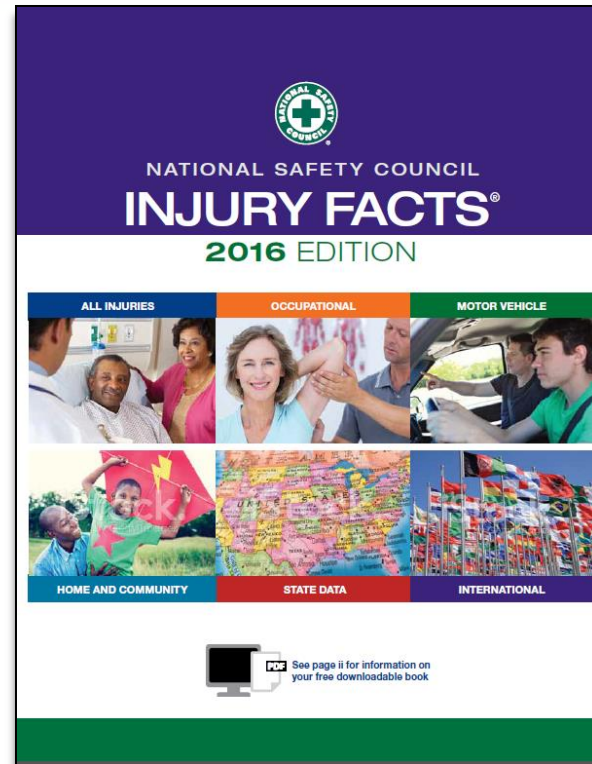
Ken Kolosh
Manager, Statistics

June 9, 2016



Injury Data Highlights

- *Injury Facts® 2016 Edition*
- Most current data available – 2014, 2013, or 2012 – depending on the source





Agenda

- Overall Trends
- Motor Vehicle
- Workplace
- Home and Community

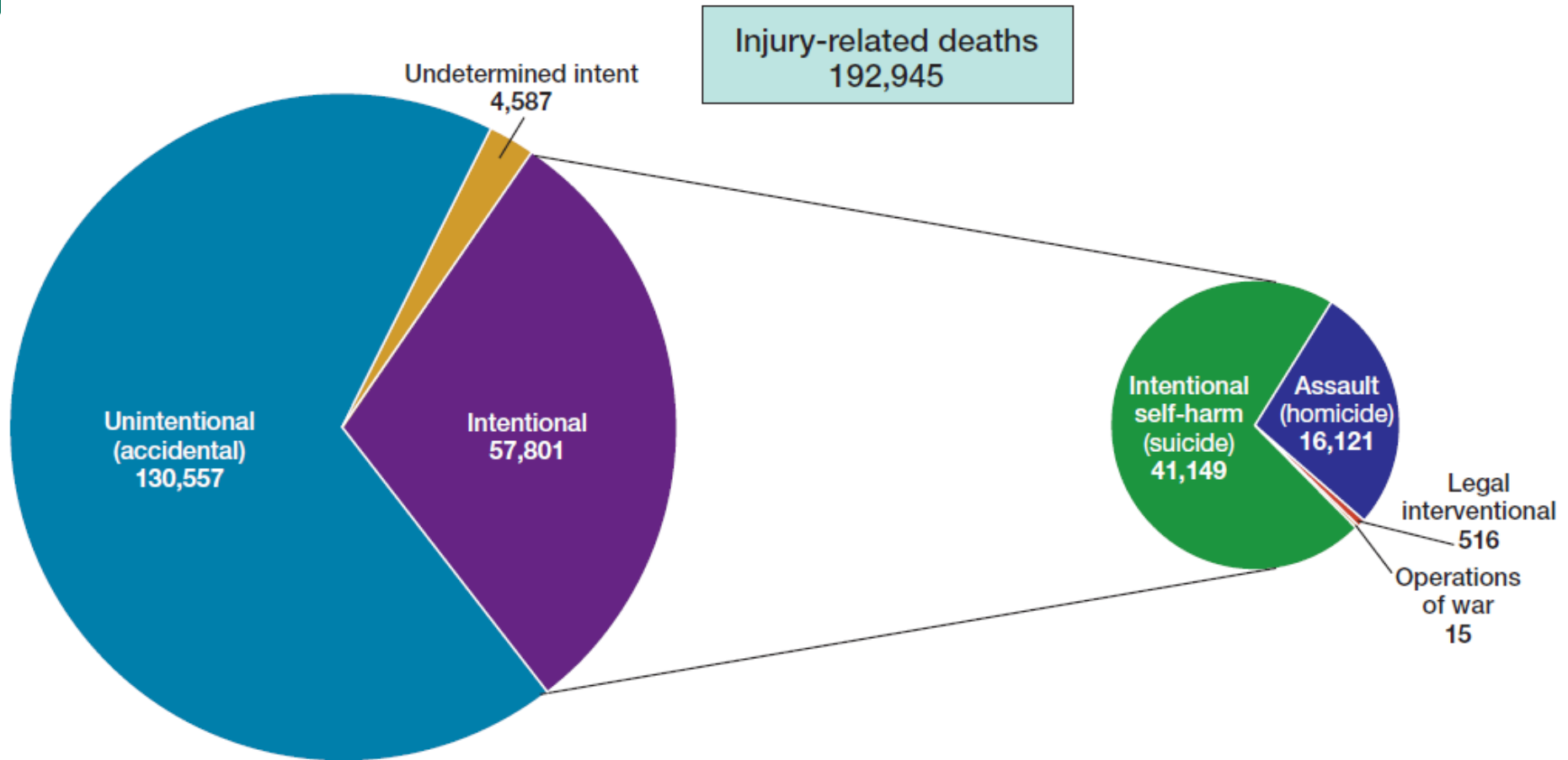


Overall Trends



Injury Related Deaths (p. 35)

Injury deaths by intent, United States, 2013





Unintentional Injuries (p. 14)

- #1 cause of death for people 1 to 42 years old
- #4 cause of death for all ages

During this 30 minute webinar about 8 people are likely to die in the U.S. Because of Unintentional Injuries

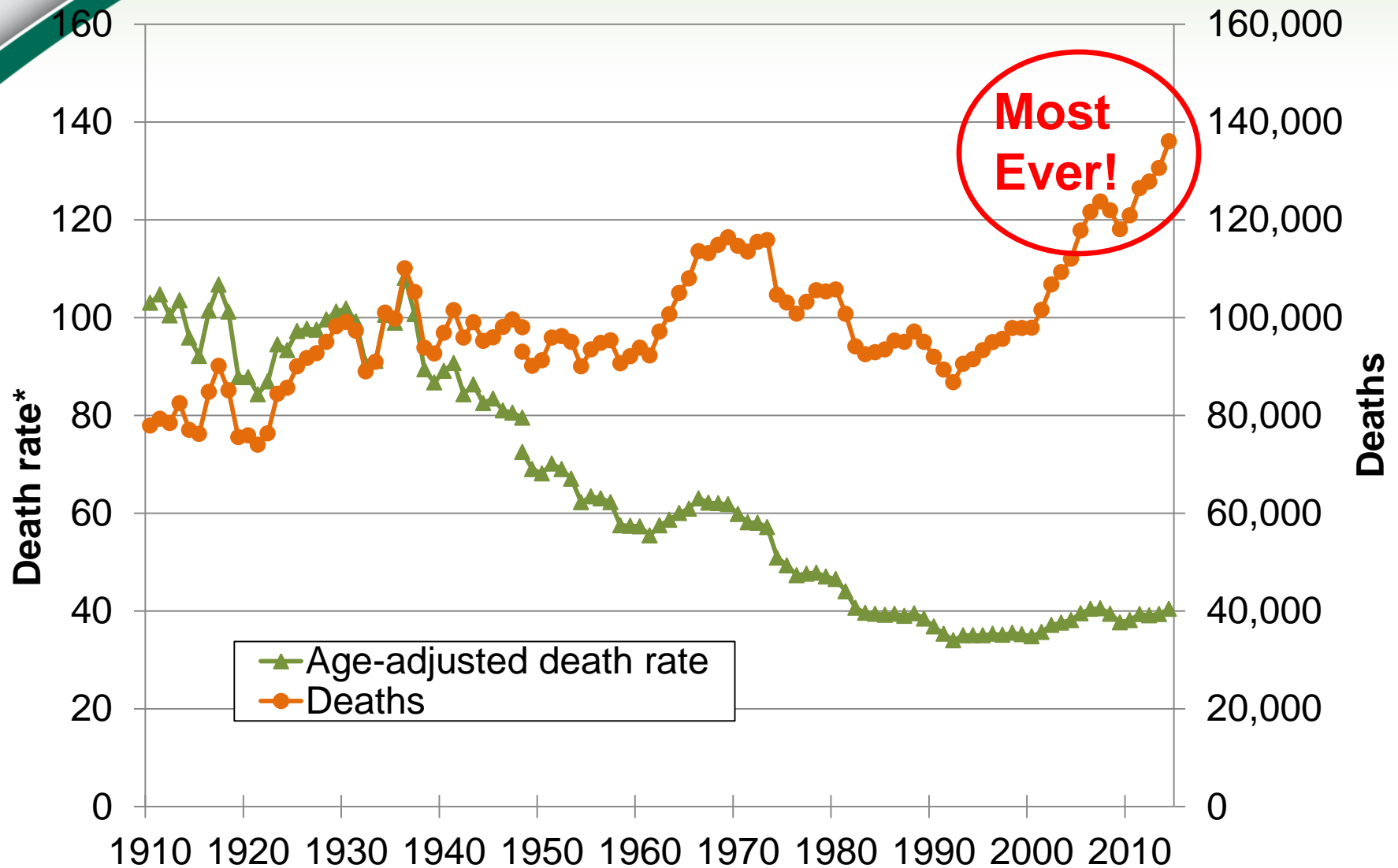


Leading Causes of Death, 2014 (New Data!)

Heart disease	614,348
Cancer	591,699
Chronic lower respiratory disease	147,101
Unintentional injuries	136,053
Stroke	133,103
Alzheimer's disease	93,541



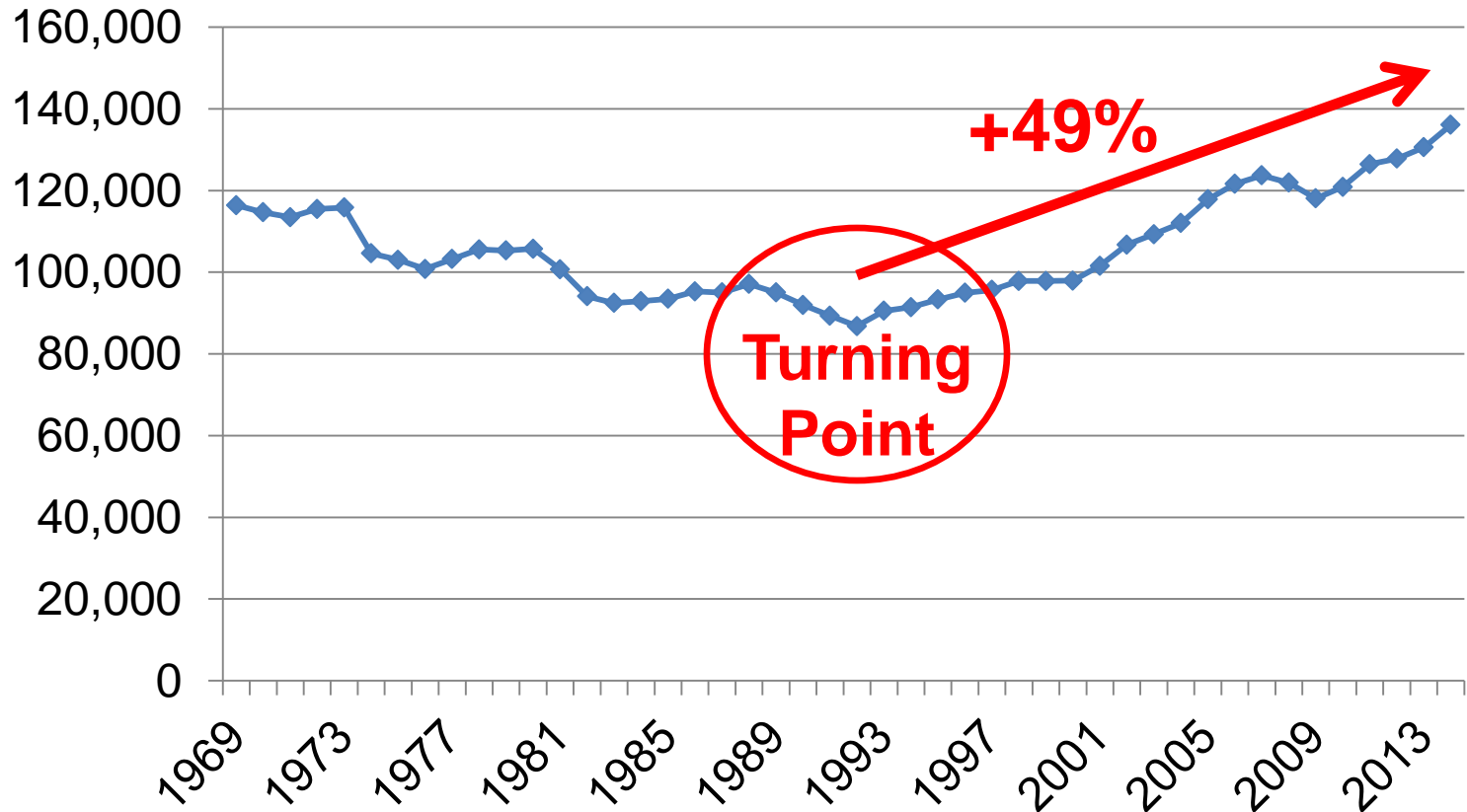
Deaths and Age-adjusted Death Rates, United States, 1910-2014





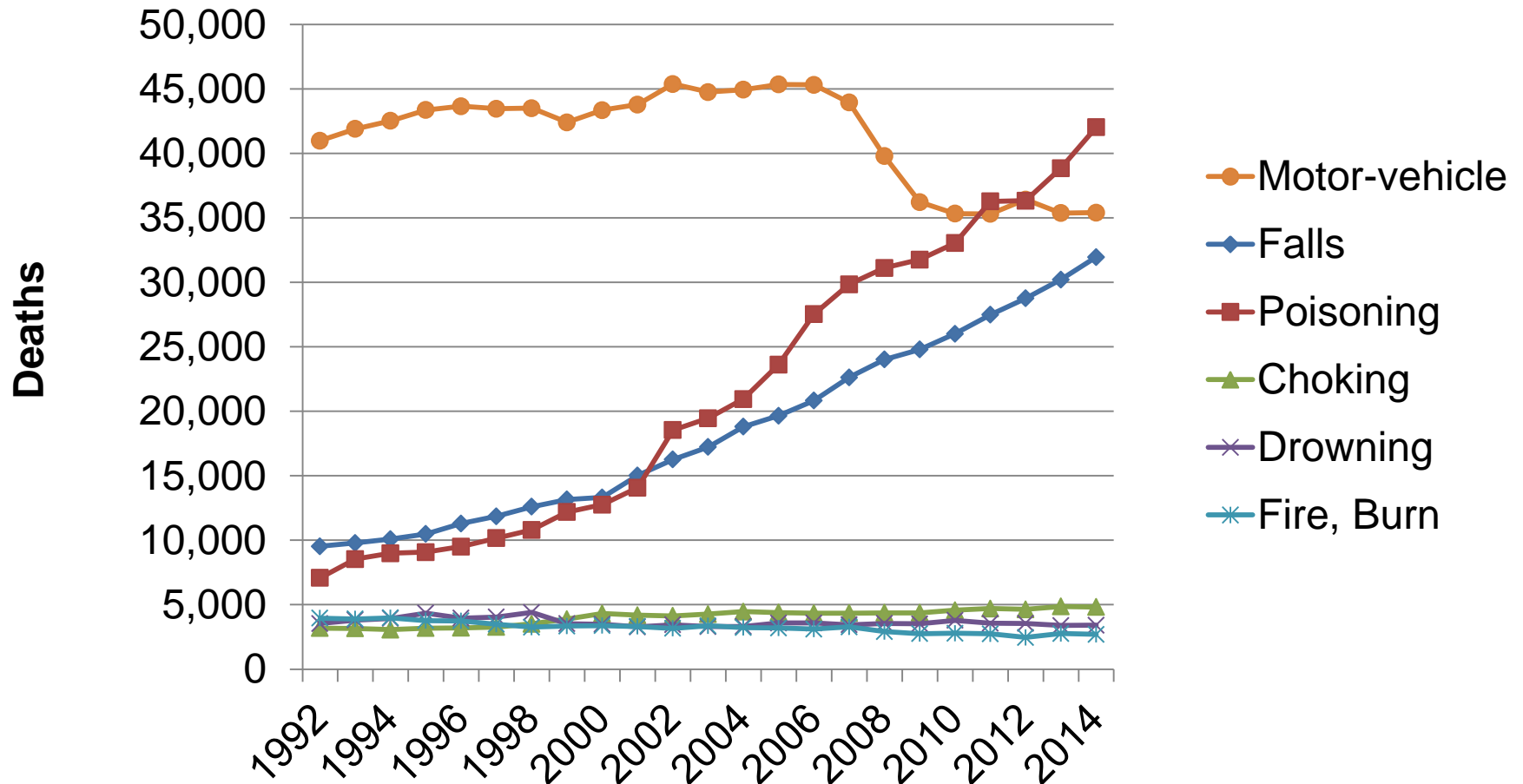
Long-Term Trends (p. 45)

Total U-I Deaths, U.S., 1969-2014





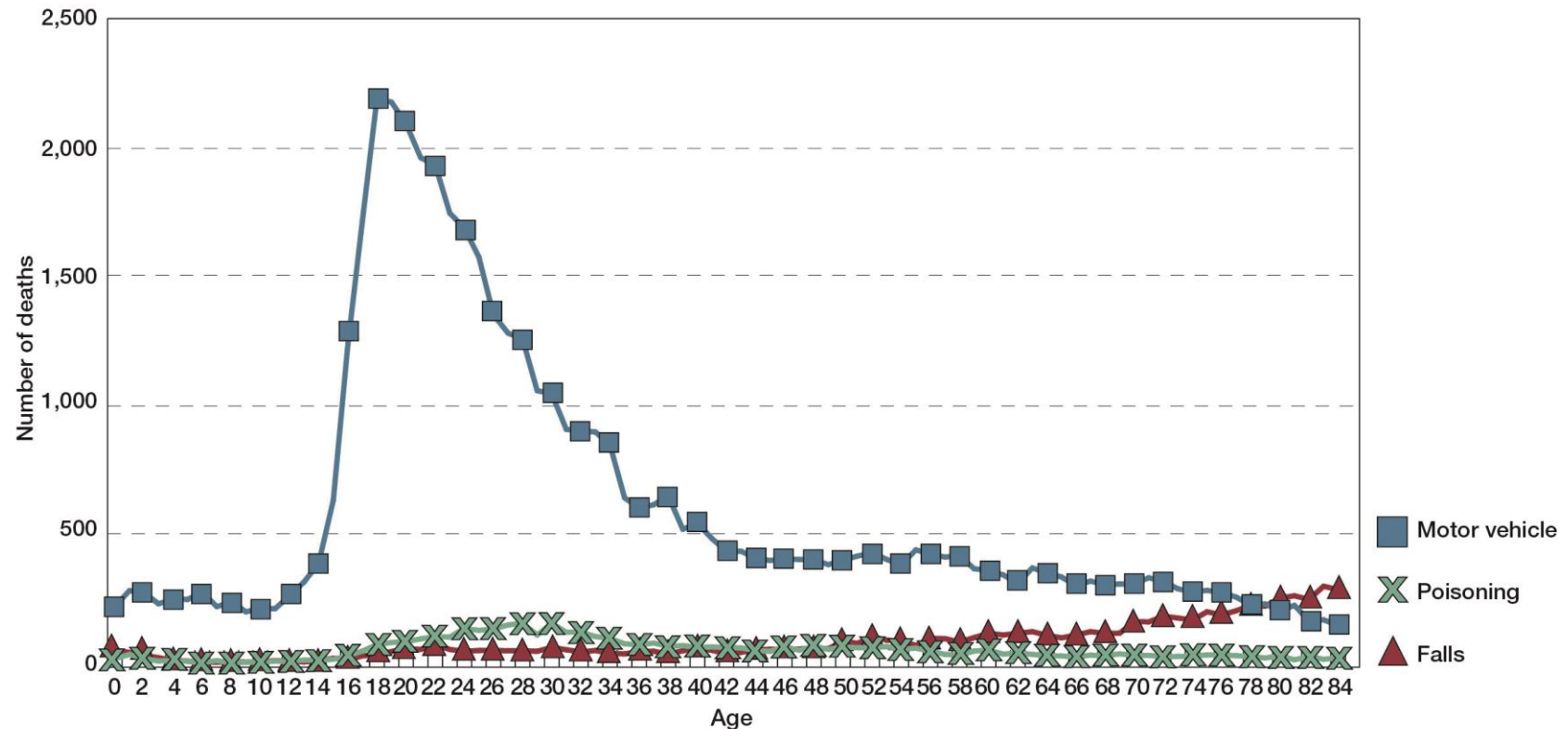
Trends in Leading Causes (p. 53)





Unintentional deaths by age and event, (p. v)

Age distribution of top three leading causes of unintentional death, United States, 1981

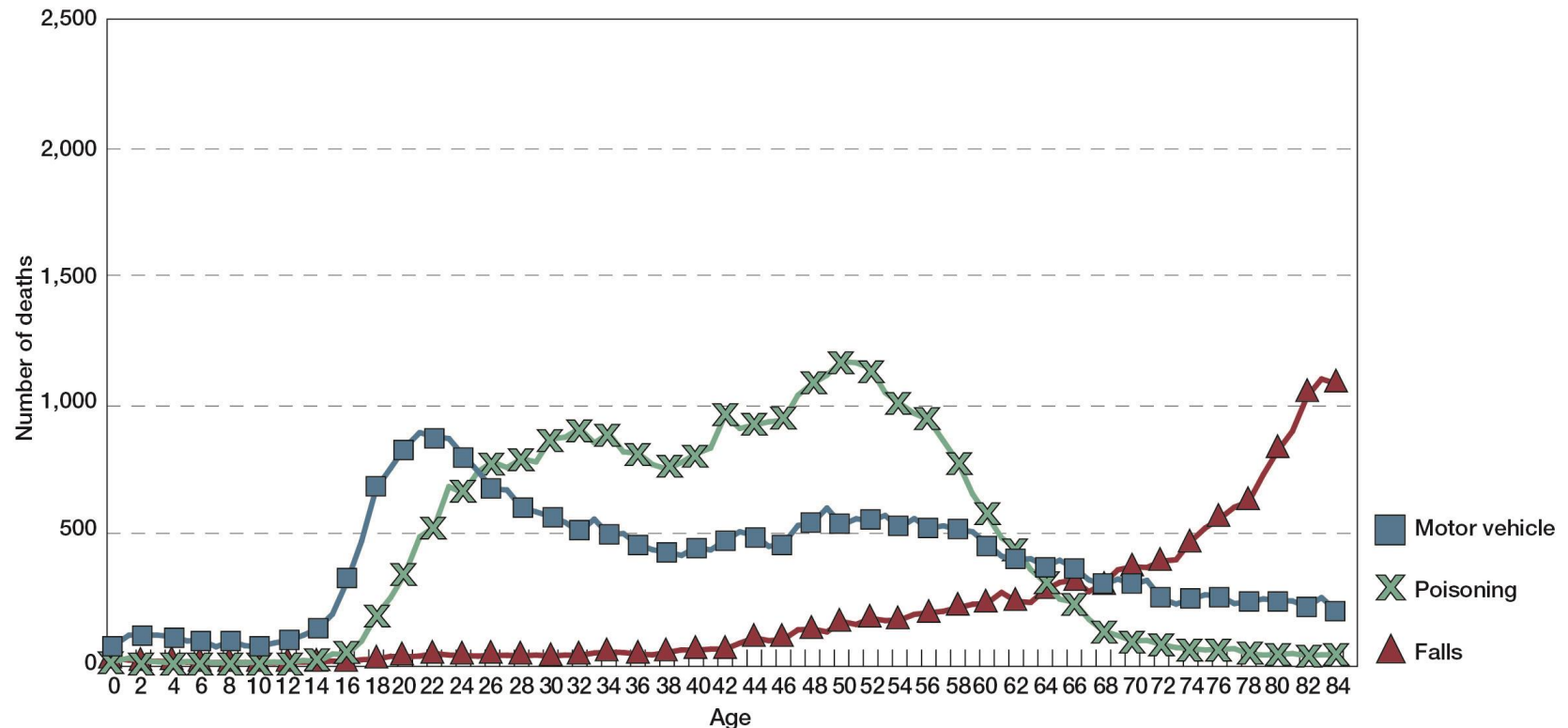


© National Safety Council: Injury Facts 2016 Edition



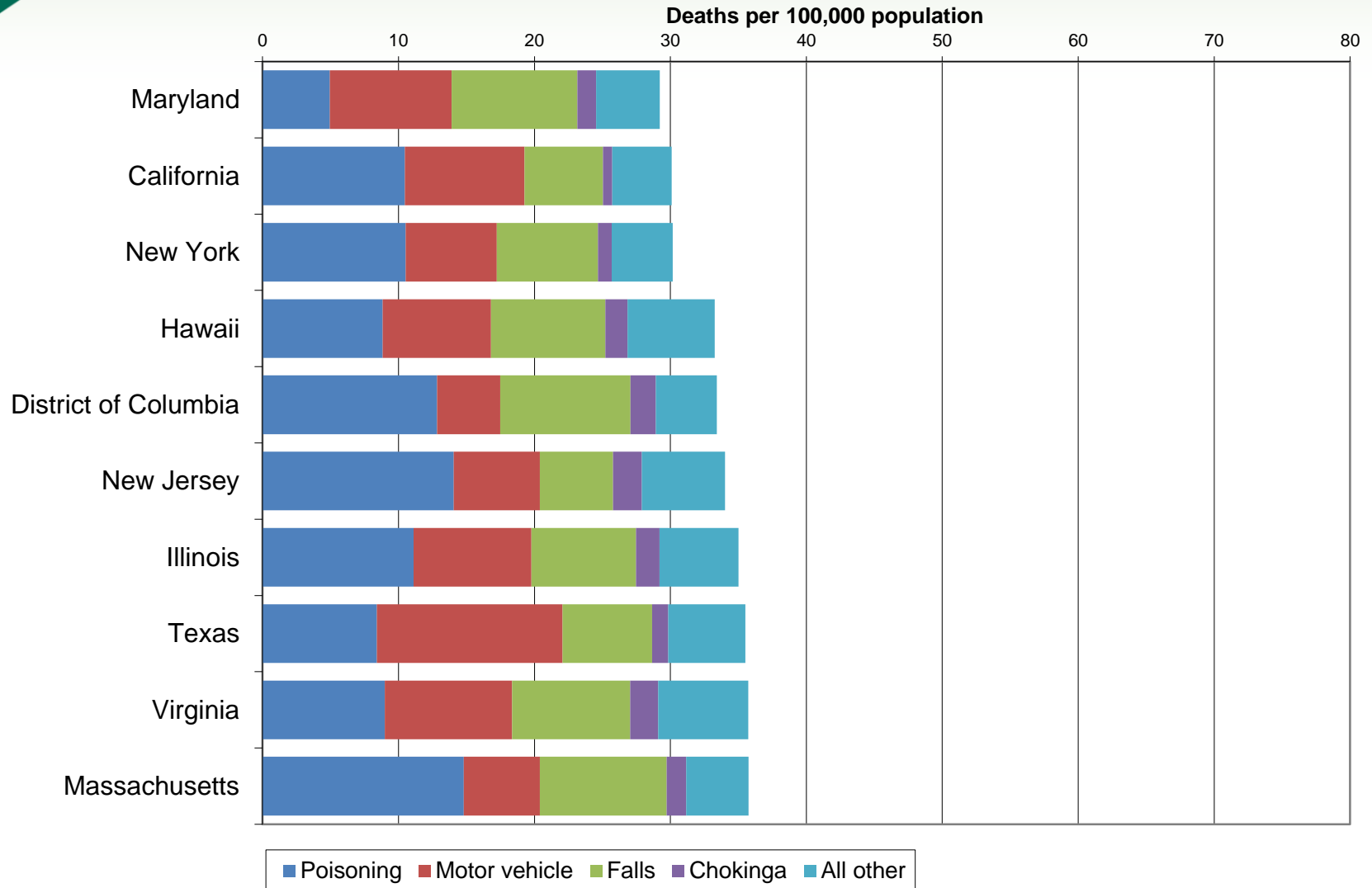
Peaks of unintentional death (p. v)

Age distribution of top three leading causes of unintentional death, United States, 2013



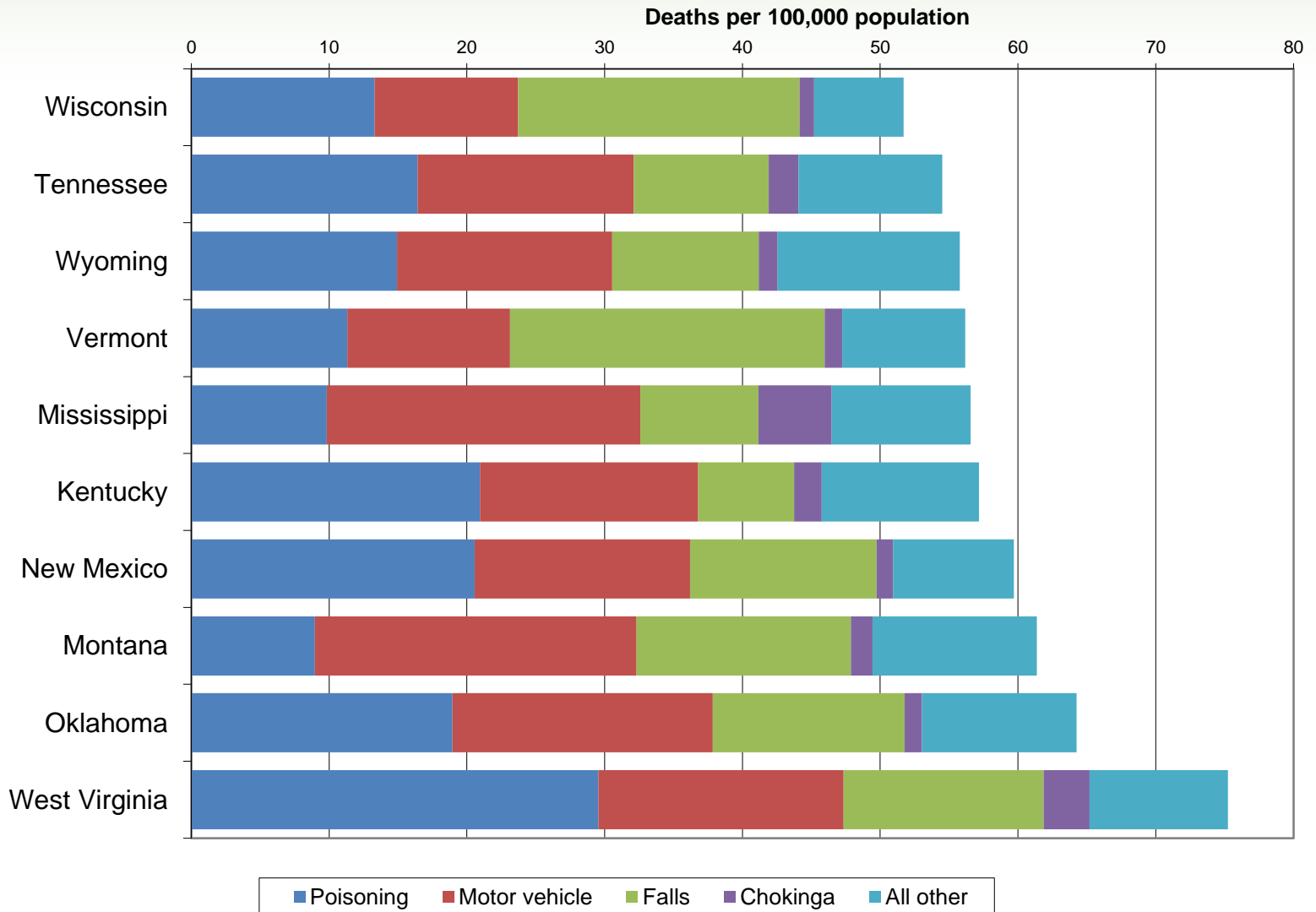


States with Lowest Injury Rates (p. 173)

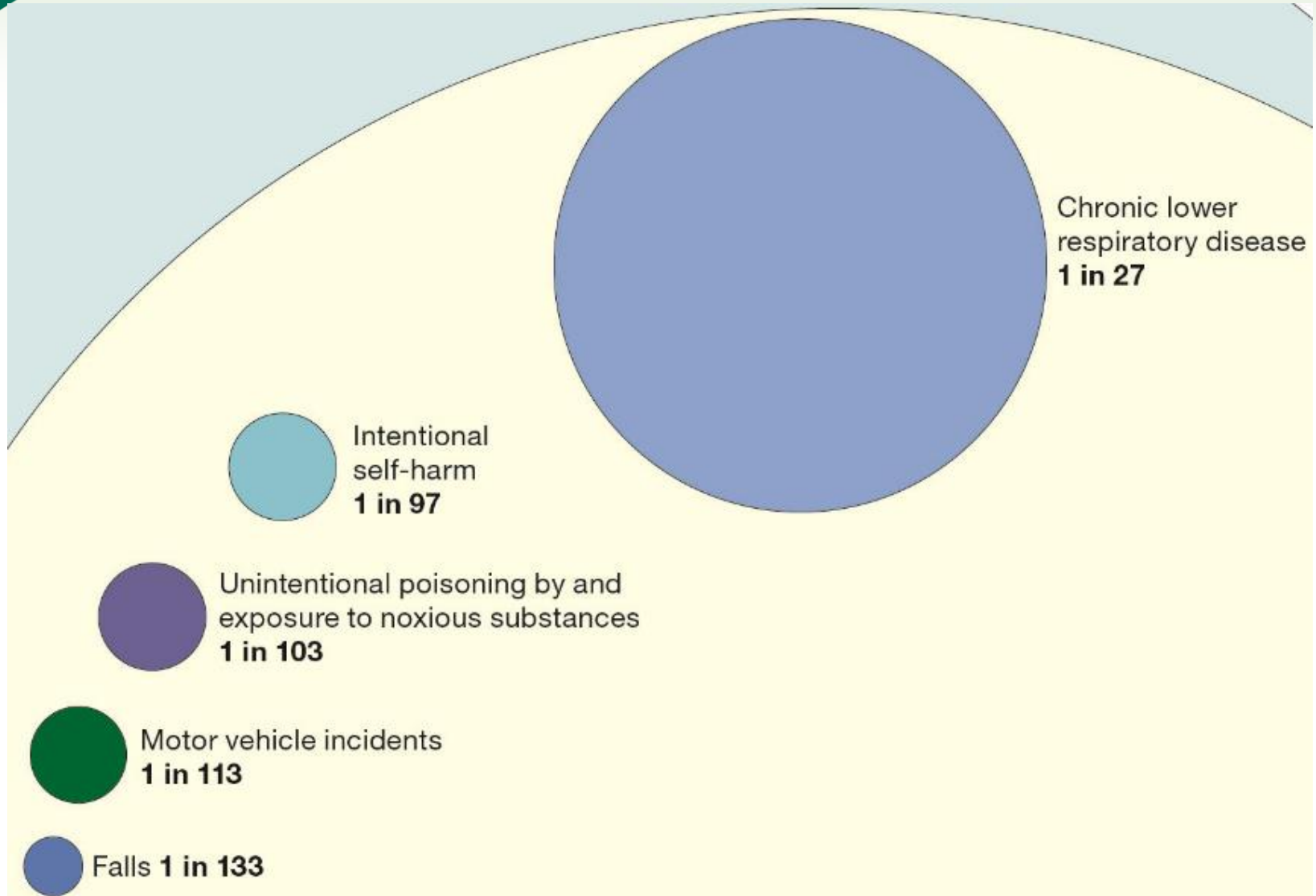




States With Highest Injury Rates (p. 173)



Odds of Dying (p.40-43)





Costs of Injuries (p. 11)

- \$853.4 billion
- \$6,900 per household
- \$2,700 per person
- Paid...
 - directly out of pocket, and
 - higher prices for goods and services, and
 - higher taxes

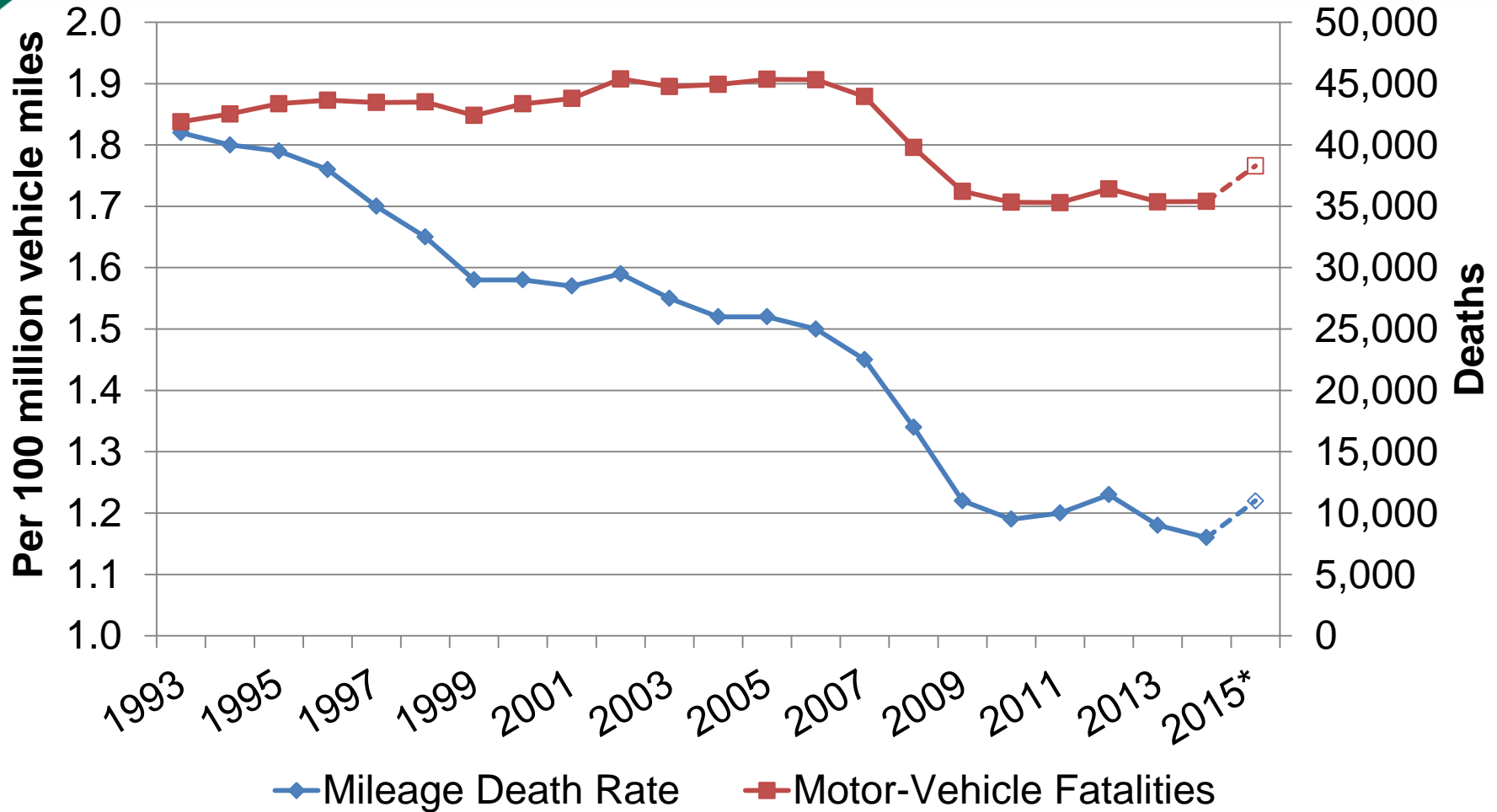


Motor Vehicle



Recent Trends (p. 105 and NEW DATA)

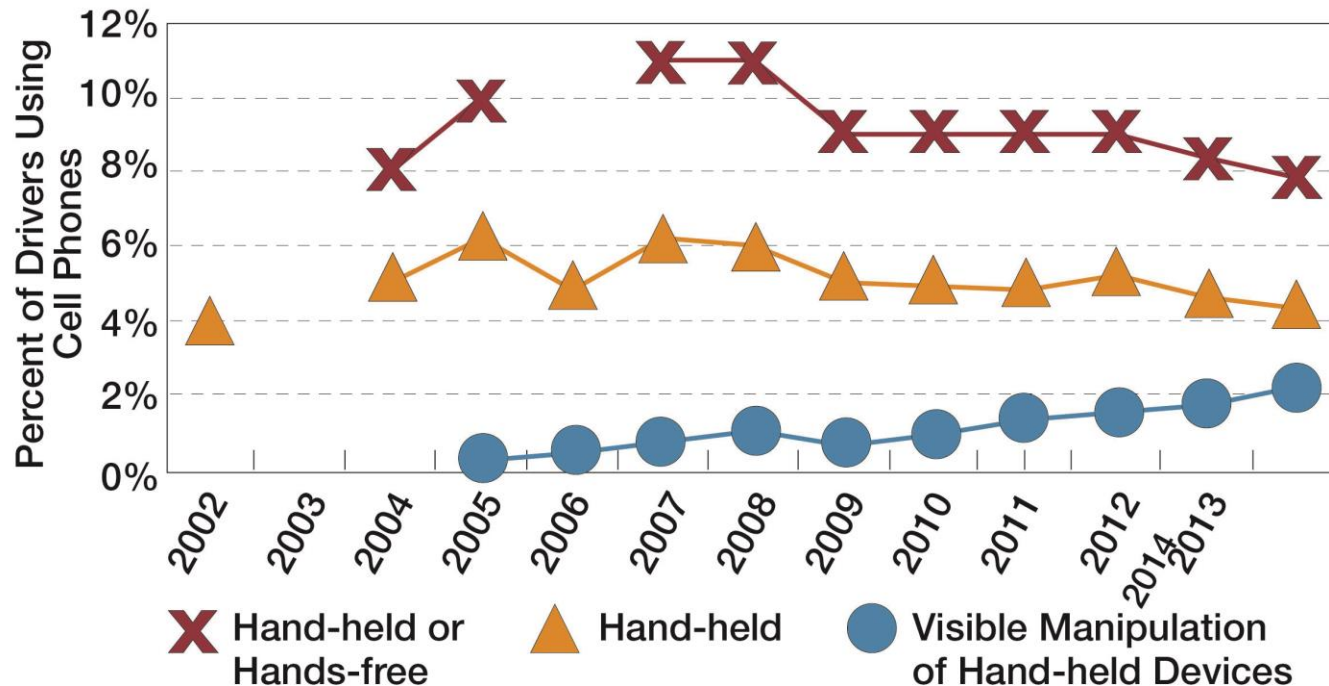
Motor-Vehicle Deaths and Rates, U.S., 1993-2015





Driver use of cell phones, 2002-2014 (p. 118-119)

Driver use of cell phones 2002-2014

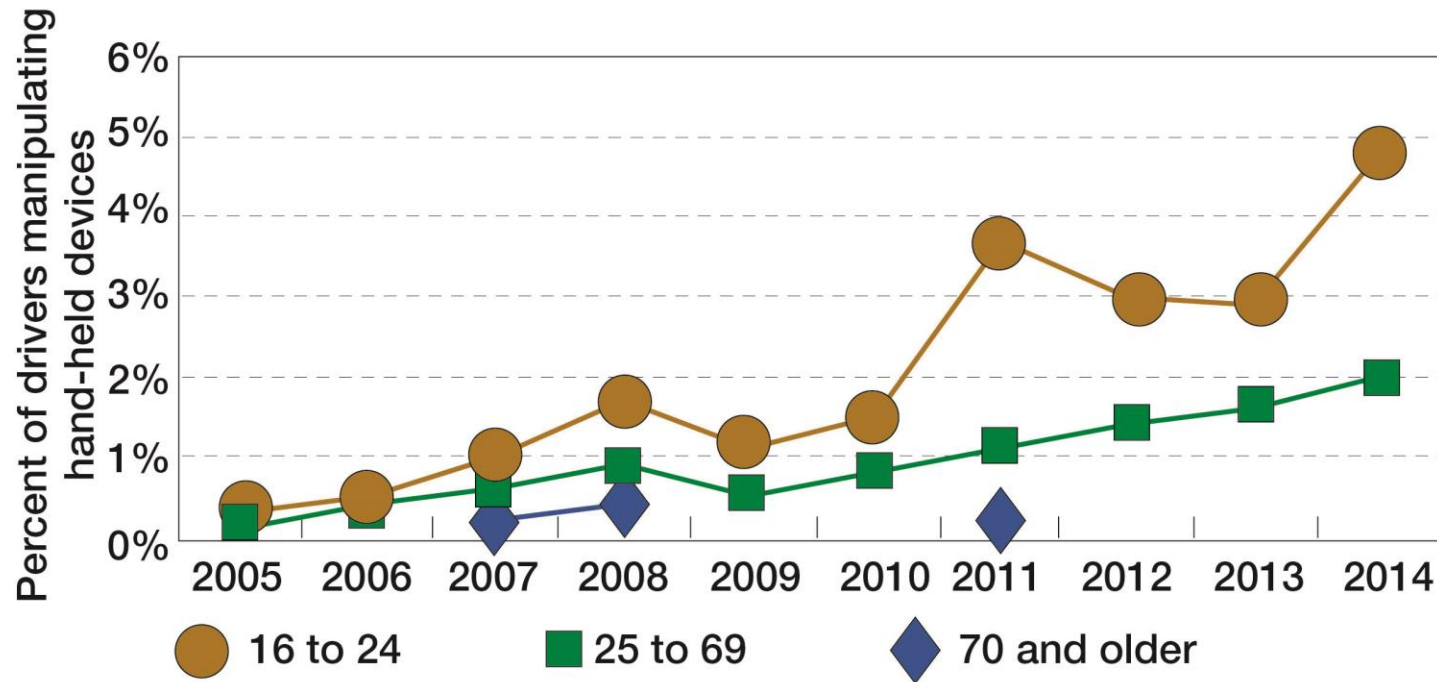


© National Safety Council: Injury Facts 2016 Edition



Driver use of cell phones, 2002-2014 (p. 118-119)

Driver visibly manipulating hand-held devices by age,
2005-2014



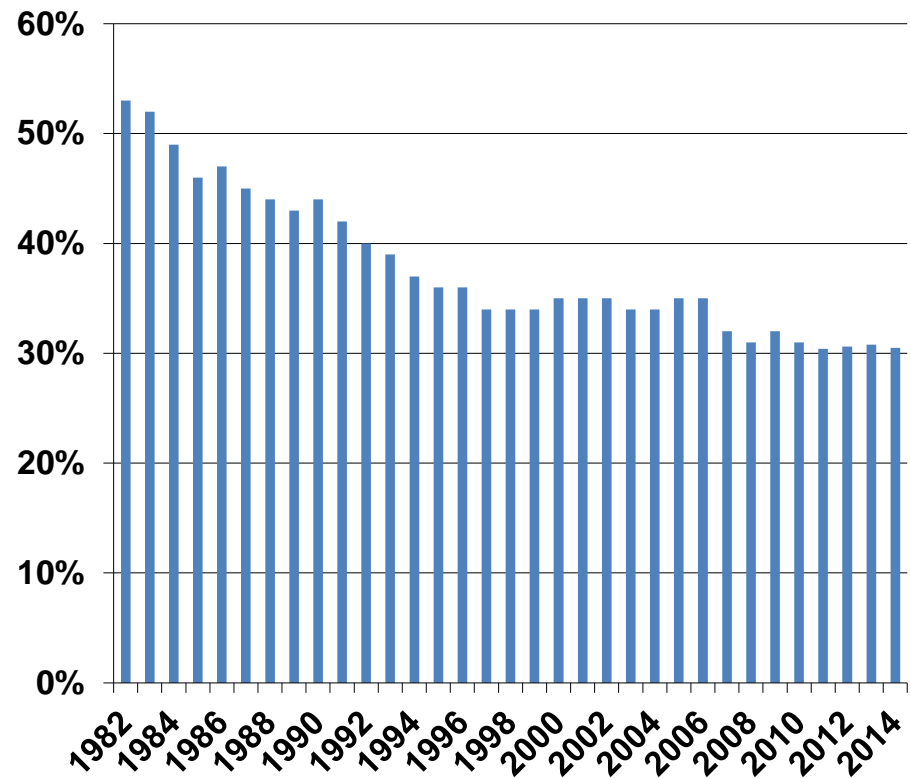
© National Safety Council: Injury Facts 2016 Edition



Alcohol (p. 114-115)

- 9,967 alcohol-impaired deaths in 2014
- 30.5% of deaths

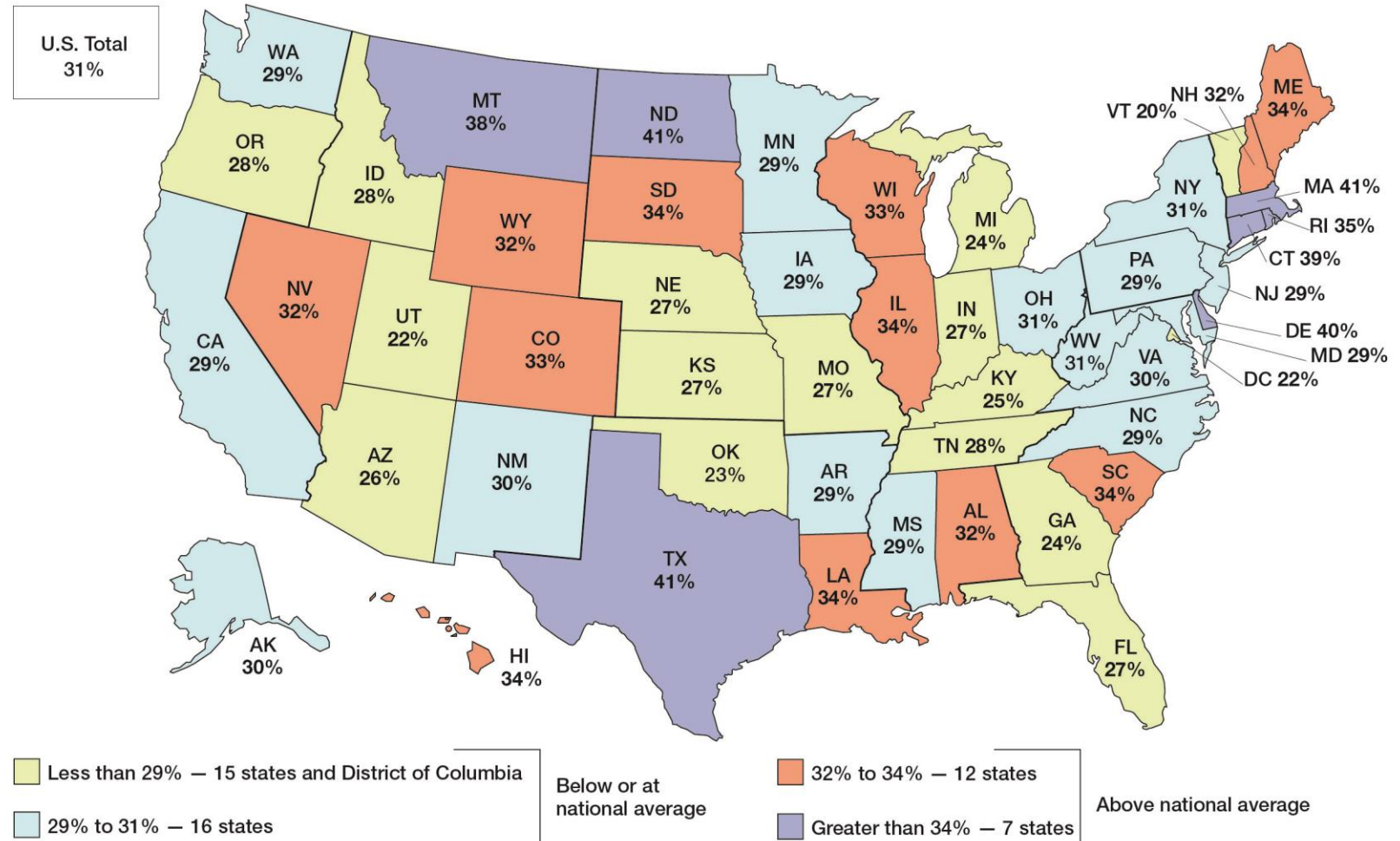
Percent of Alcohol-Impaired Deaths, 1982-2014



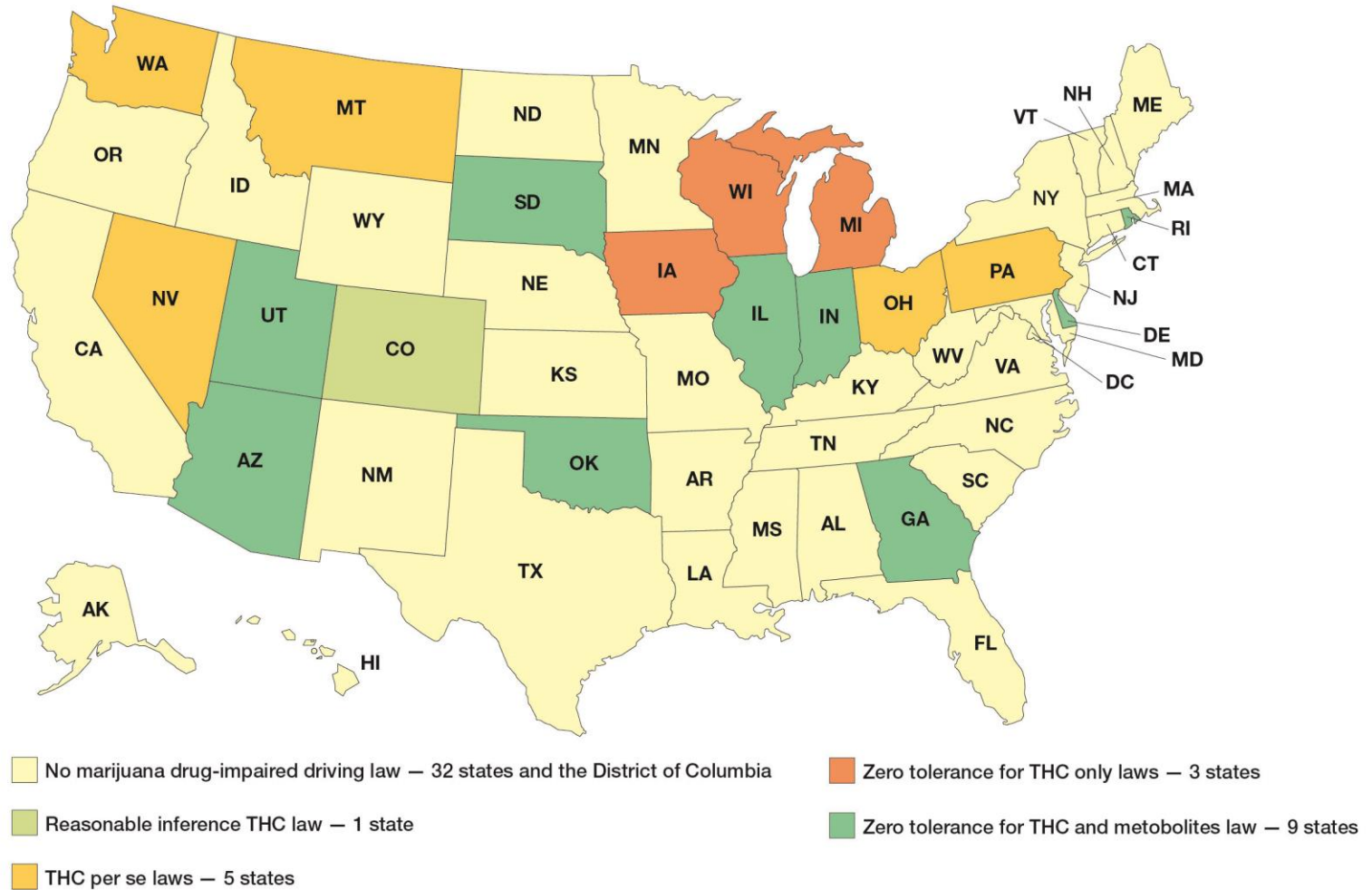


Alcohol (p. 114-115)

Percent of fatalities involved in fatal crashes with BAC of 0.08+, by state, 2014



State marijuana-specific impaired driving laws

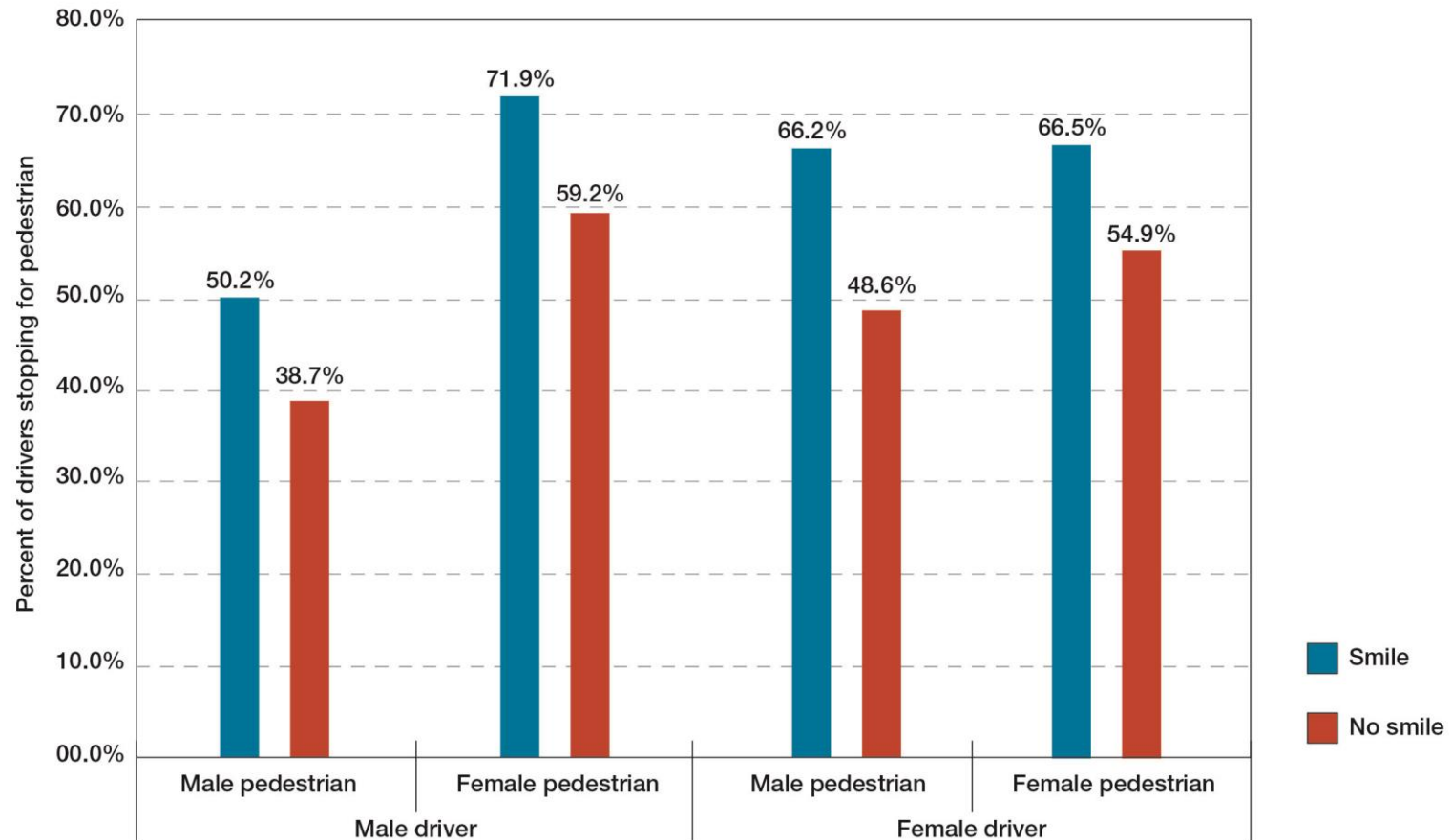


© National Safety Council: Injury Facts 2016 Edition



Smiling Pedestrians (p. 123)

Percent of drivers stopping at crosswalks for pedestrians smiling or not smiling by sex



© National Safety Council: Injury Facts 2016 Edition



Holidays (p. 129)

Motor-vehicle deaths and percent alcohol-impaired during holiday periods, United States, 2010-2014

Year	Holiday period ^a											
	New Year's Day		Memorial Day		Independence Day		Labor Day		Thanksgiving Day		Christmas Day	
	Deaths ^b	Alcohol-impaired ^c (%)	Deaths ^b	Alcohol-impaired ^c (%)	Deaths ^b	Alcohol-impaired ^c (%)	Deaths ^b	Alcohol-impaired ^c (%)	Deaths ^b	Alcohol-impaired ^c (%)	Deaths ^b	Alcohol-impaired ^c (%)
2010	286 (3)	48	389 (3)	40	365 (3)	38	390 (3)	35	417 (4)	40	249 (3)	35
2011	304 (3)	43	389 (3)	40	405 (3)	37	373 (3)	37	375 (4)	32	256 (3)	36
2012	348 (3)	39	367 (3)	44	157 (1)	45	378 (3)	38	405 (4)	41	351 (4)	35
2013	343 (4)	44	334 (3)	38	461 (4)	39	371 (3)	38	360 (4)	33	88 (1)	37
2014	126 (1)	—	337 (3)	—	347 (3)	—	362 (3)	—	403 (4)	—	355 (4)	—

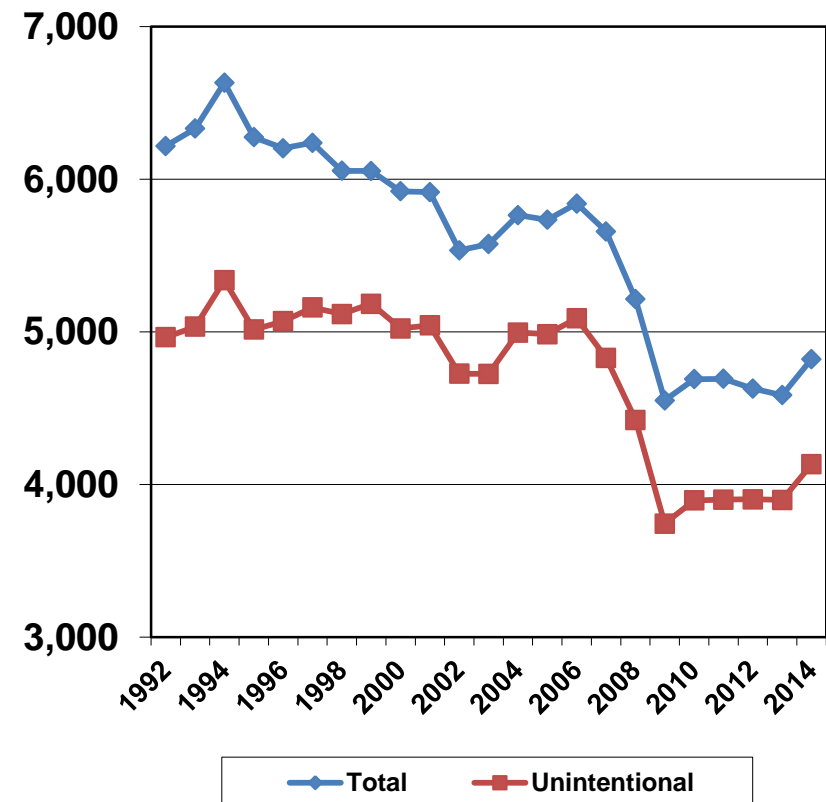


Workplace



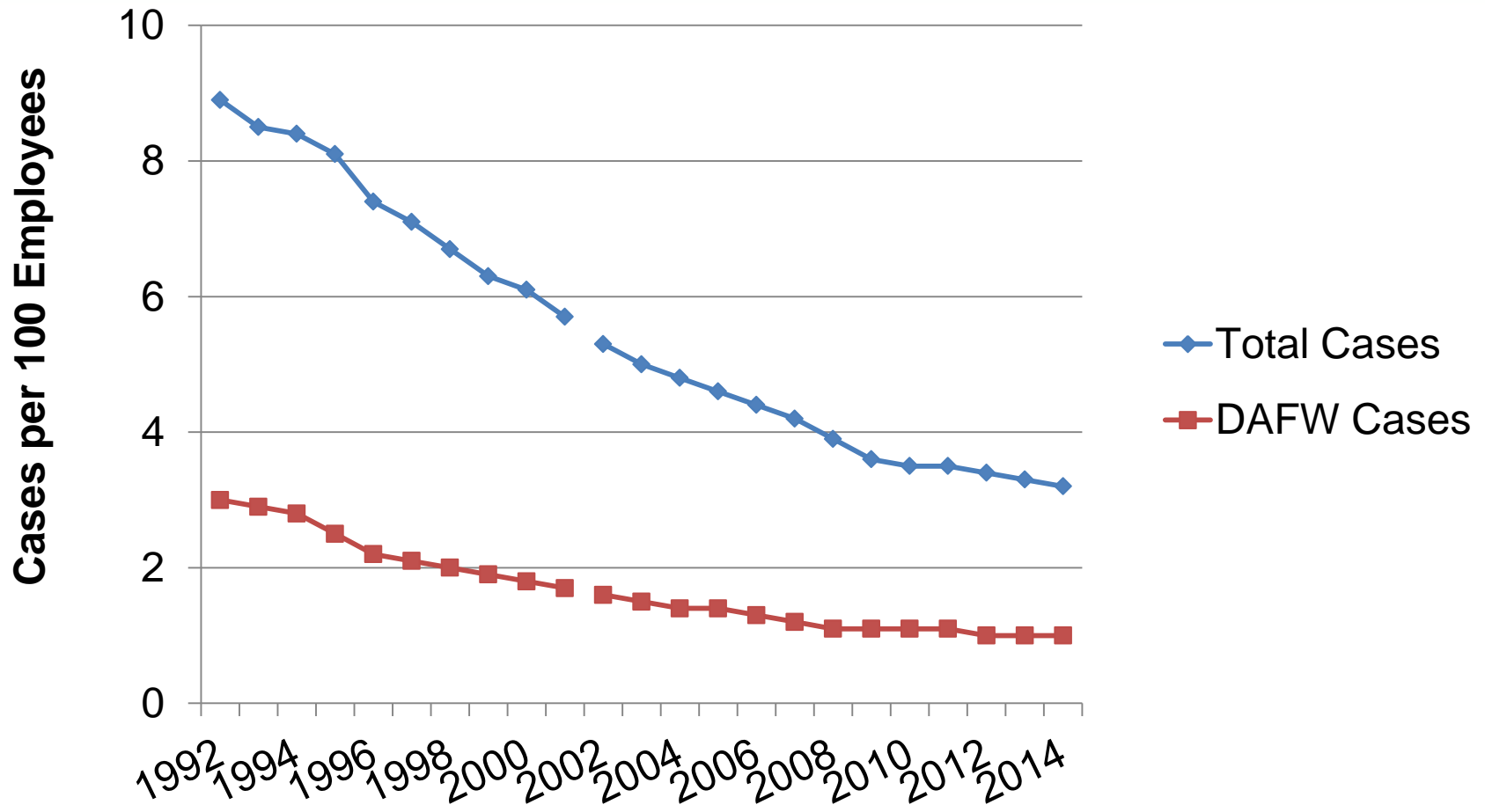
Workplace (p. 60-61, New Final Data!)

- 4,821 fatal work injuries in 2014
 - 4,132 unintentional
 - 689 homicide and suicide
- Total up 5% from 2013
- U-I up 6% from 2013



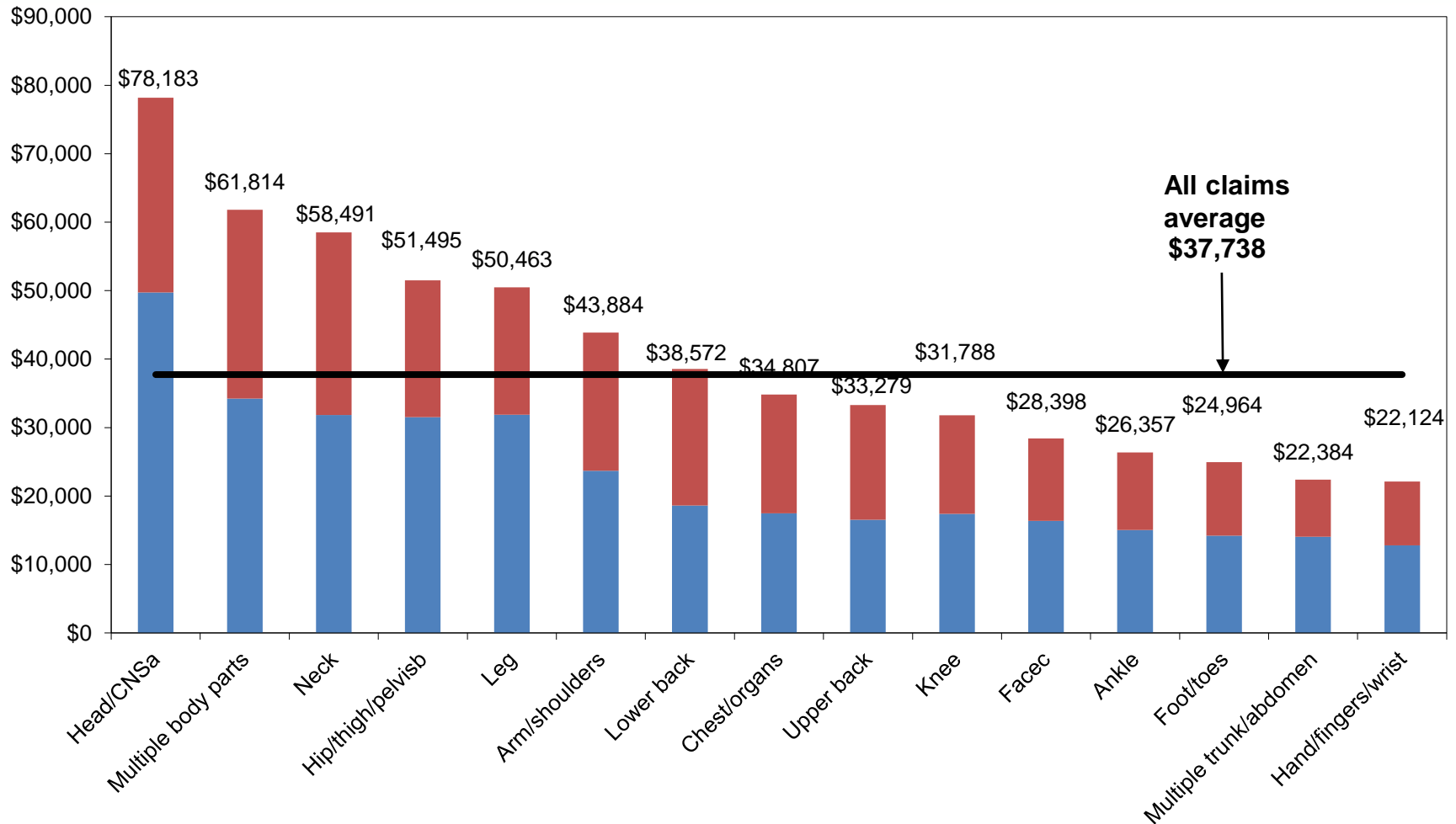


Incidence Rate Trends (p. 78)





Average total incurred costs per claim by part of body, 2012-2013 (p. 66 – 67)





Contractor Fatalities – Top Industries (p. 72)

Industry	Deaths	Percent of Total
Construction	453	51.8%
Professional and Business Services	120	28.7%
Transportation and Warehousing	62	8.4%
Agriculture, Forestry, Fishing, and Hunting	26	4.6%
Other Services	23	13.2%



Home & Community

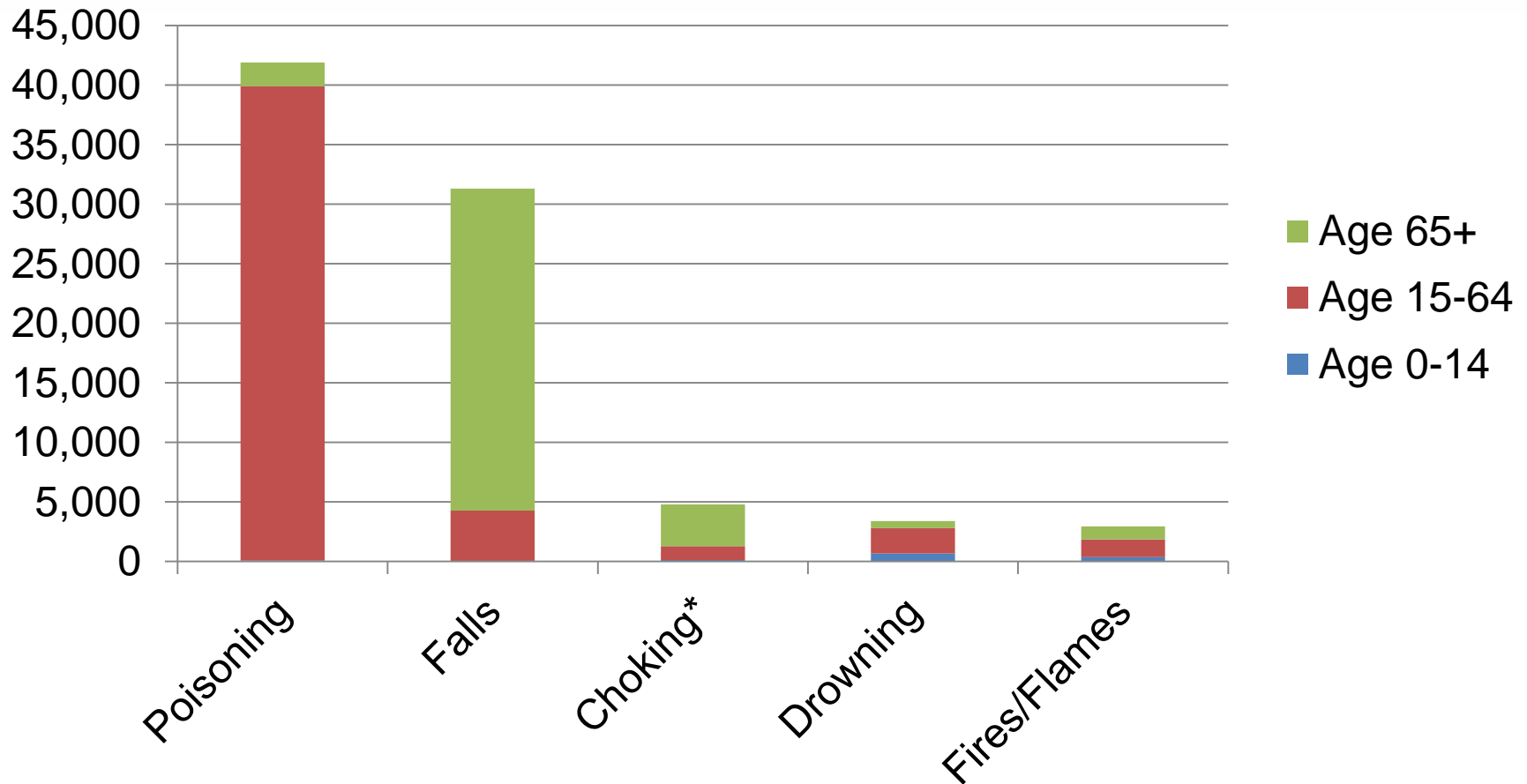


Home & Community (p. 142)

- 98,600 deaths (+6%)
- 30,500,000 medically consulted injuries
 - 1 out of 10 people



Home & Community Deaths, 2014 (p. 143)

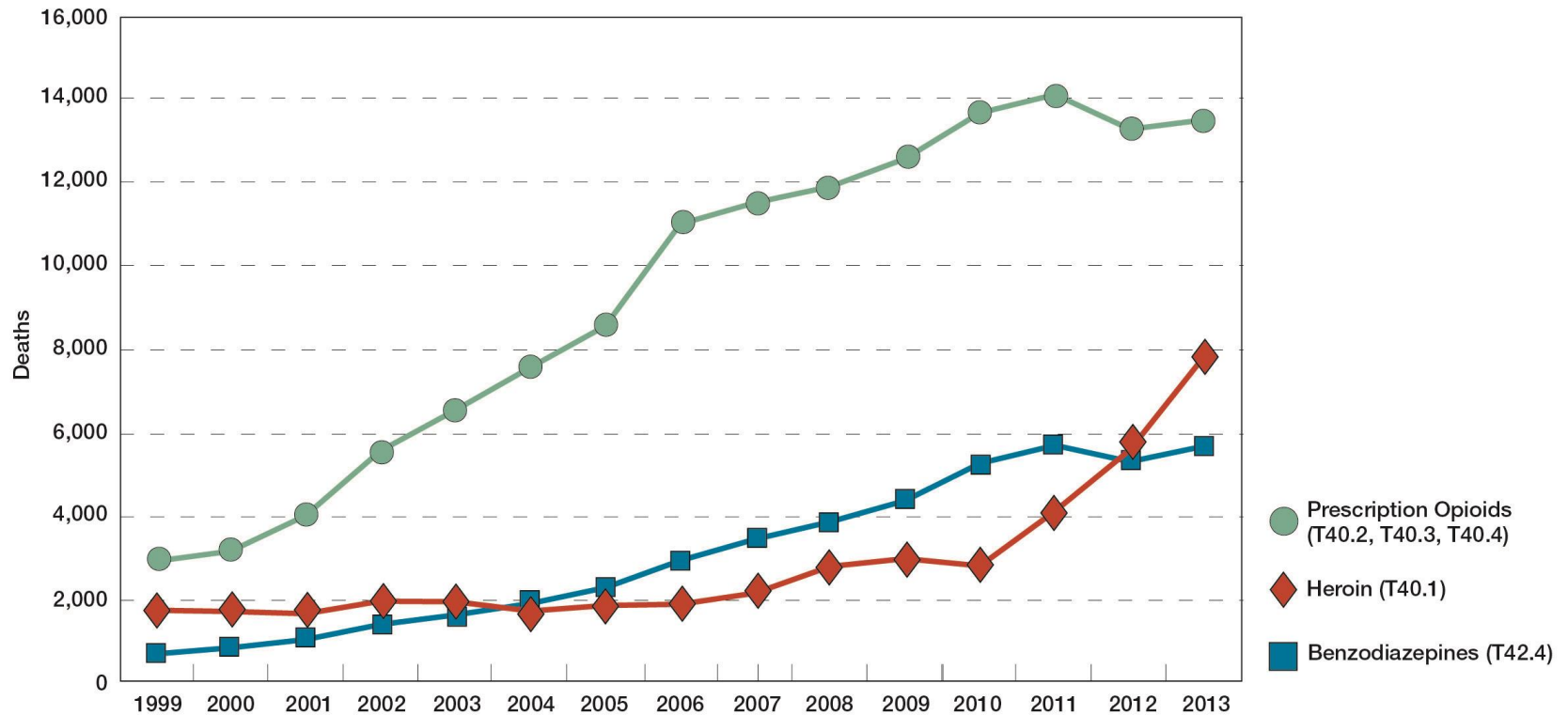


***Inhalation or ingestion of food or object obstructing breathing.**



Poisoning Death Rates Increase (p. 161)

Unintentional poisoning deaths by selected drugs, United States, 1999-2013



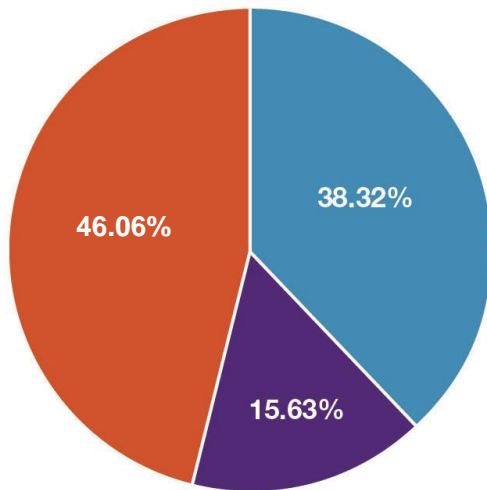
Note: Deaths by drug type are not mutually exclusive, deaths involving multiple drugs are included in the count of each drug.

© National Safety Council: Injury Facts 2016 Edition

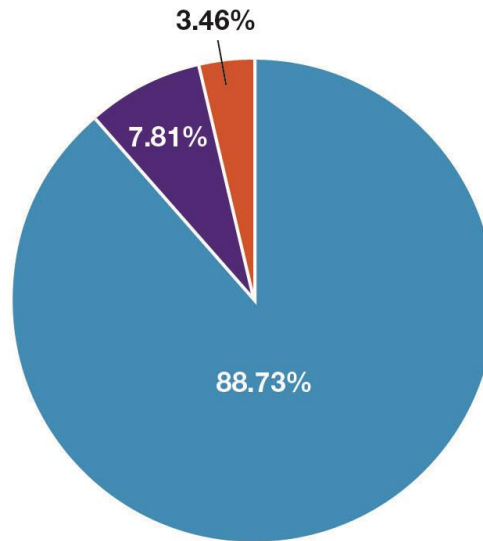


Unintentional Poisoning Deaths (p. 162)

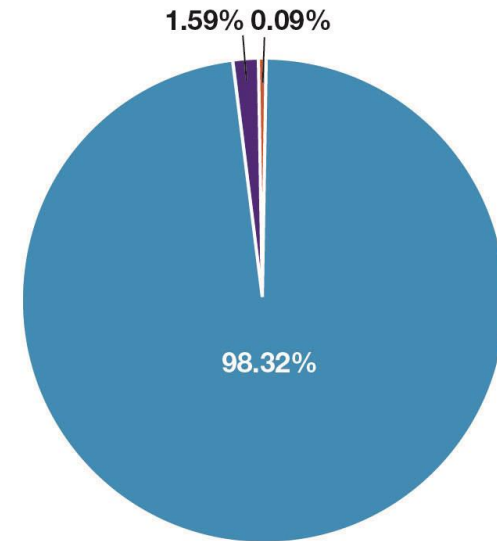
Poisoning exposures, 2013



Nonfatal poisoning emergency department visits, 2013



Poisoning deaths, 2013



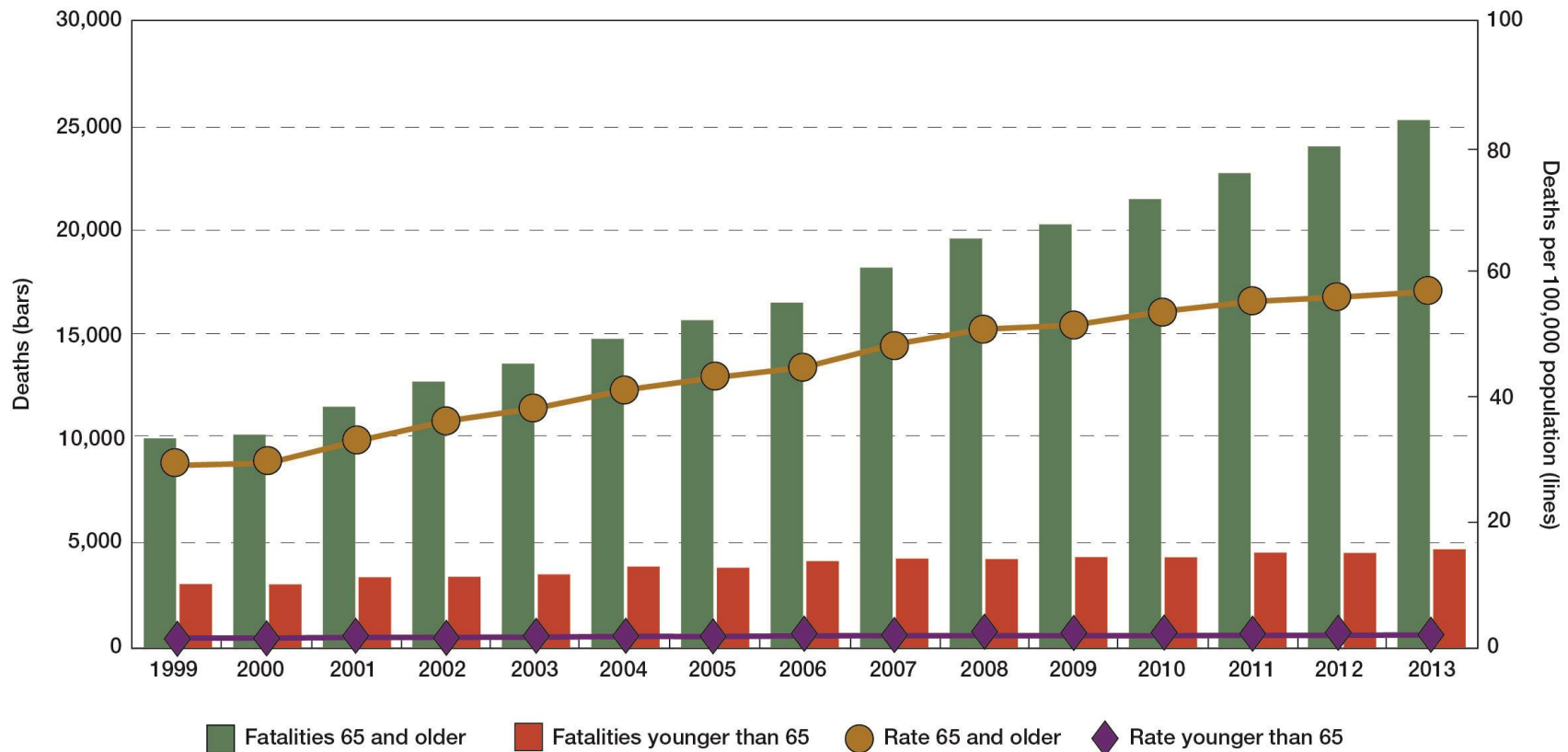
■ >19 years old ■ 5-19 years old ■ 0-4 years old

© National Safety Council: Injury Facts 2016 Edition



Older Adult Falls (p. 163)

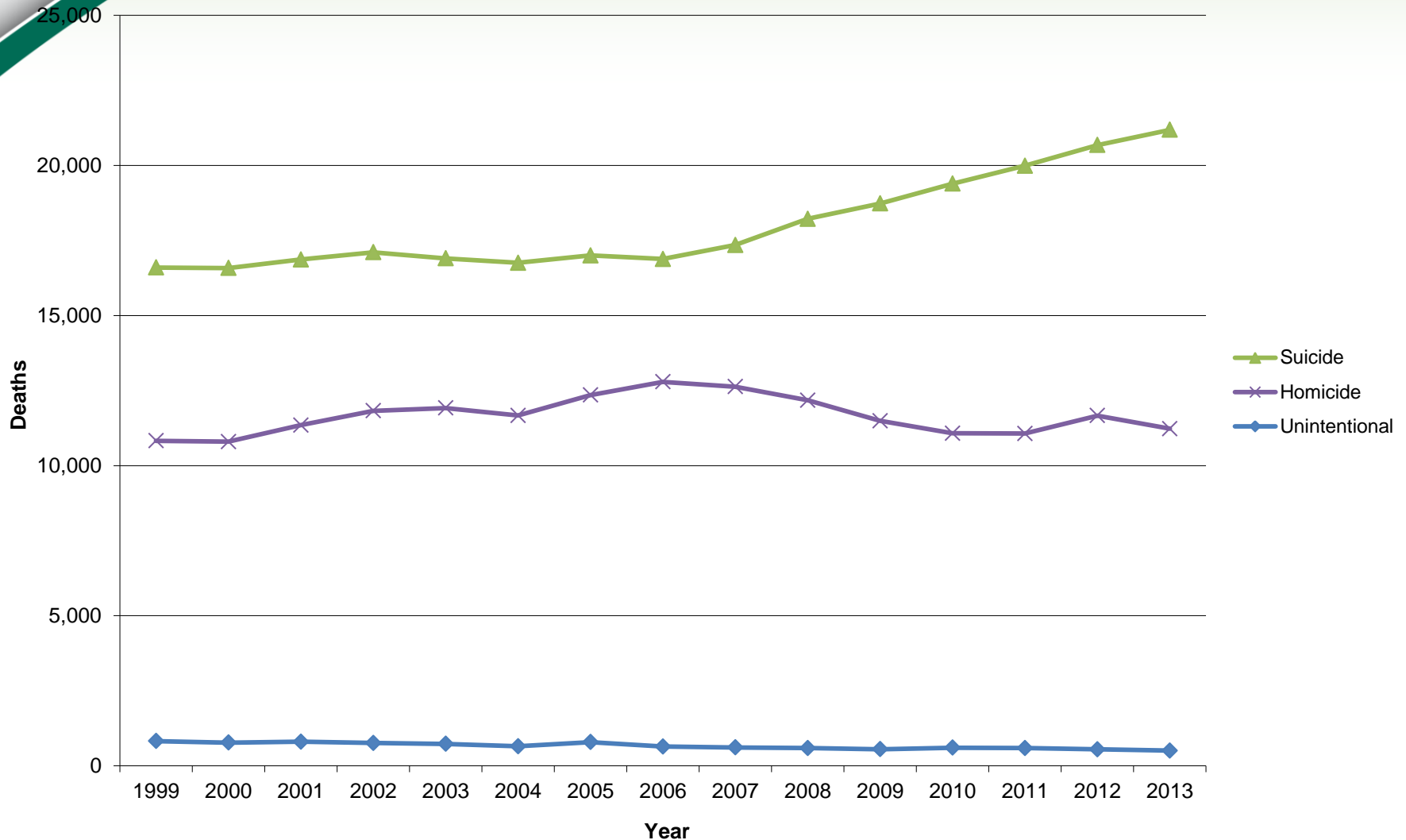
Fall deaths and death rates, United States, 1999-2013



© National Safety Council: Injury Facts 2016 Edition



Firearms deaths (p. 168)





NSC Subject Matter Experts

- Deborah A.P. Hersman, president and CEO, safety expert
- Kelly Nantel, vice president, safety expert
- Ken Kolosh, statistics manager and safety expert
- Tess Benham, prescription drug abuse and addiction expert
- Kathy Bernstein, traffic safety expert
- Alex Epstein, vehicle technology expert
- John Dony, occupational safety expert
- Amy Artuso, home safety expert
- Carrie Nie, community safety expert

Call (630) 775-2226 or email media@nsc.org



Other Resources

- Monthly motor vehicle fatality estimates
- Holiday period motor vehicle fatality estimates
- National Safety Council Library
- NSC.org

