

Preliminary data from an ongoing statewide study

An Epidemic of White Death: A Canary in the Coal Mine?

An alarming national trend wreaks havoc in California's South Central Valley



Cause for Concern | Rising Regional Death Rates



For the first time in decades, we're seeing a decline in life expectancy across the United States

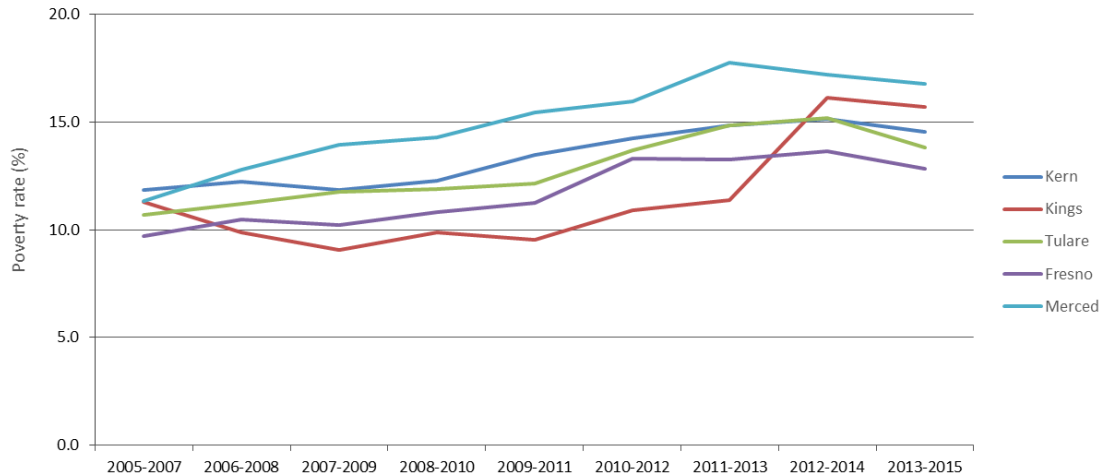
- In California's Central Valley, conditions are even more dire — especially in poorer counties like Kern, Tulare, Fresno and Kings.
- Among young (25-34) and middle-aged (40-64) whites across California, death rates are decreasing, but in the southern Central Valley, white death rates are increasing.
- Residents in this region are suffering from multiple social stressors: unemployment, wage stagnation and high poverty rates.
- Rising death rates in whites are driven by acts of despair: drug overdoses, chronic alcohol abuse, and suicide.



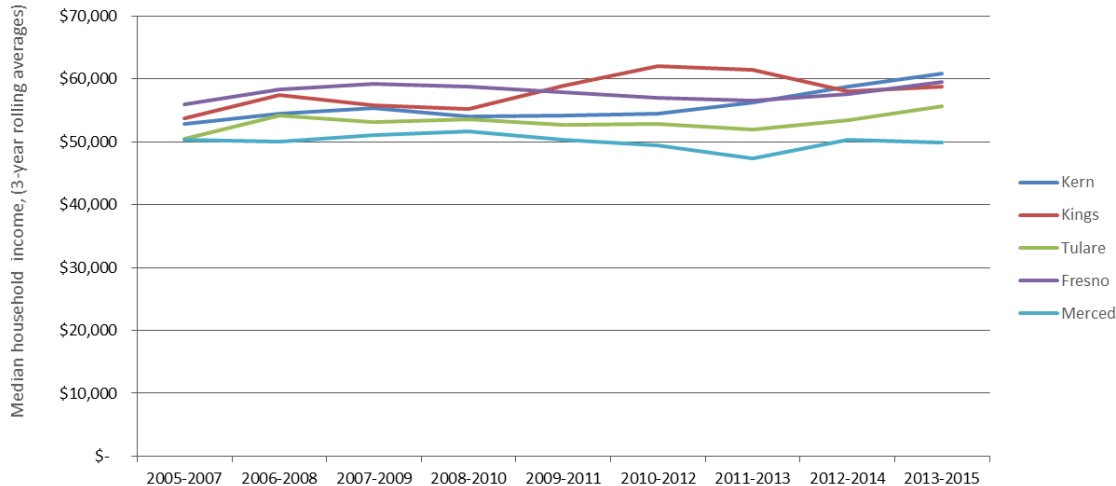
- Death rates from these “stress-related conditions” have climbed faster in the Southern Central Valley than they have statewide. Here are some examples:
 - In Fresno County, the rate at which middle-aged adults (ages 40-64 years) are dying from accidental drug poisoning has increased by 212.3% since the 1990s; and in Kern County it has increased 163.7% over the same period.
 - In Tulare County, the death rate from viral hepatitis has increased by 166.5% since the 1990s.
 - White women are most impacted. In Kern County, the rate at which young white men (ages 25-34 years) are dying from accidental drug overdoses has increased by 248% since the 1990s. Among women, the death rate appears to be rising faster.
 - Suicides by hanging, strangulation and suffocation have increased by 121% in the region since the 1990s.
- We cannot blame these deaths simply on the opioid epidemic. These are deaths of despair.

Poverty and Income | Impact in Southern Central Valley

Poverty Rate among middle-aged NH Whites (ages 40 – 64)



Median Household Income among middle-aged NH Whites (ages 40 – 64)

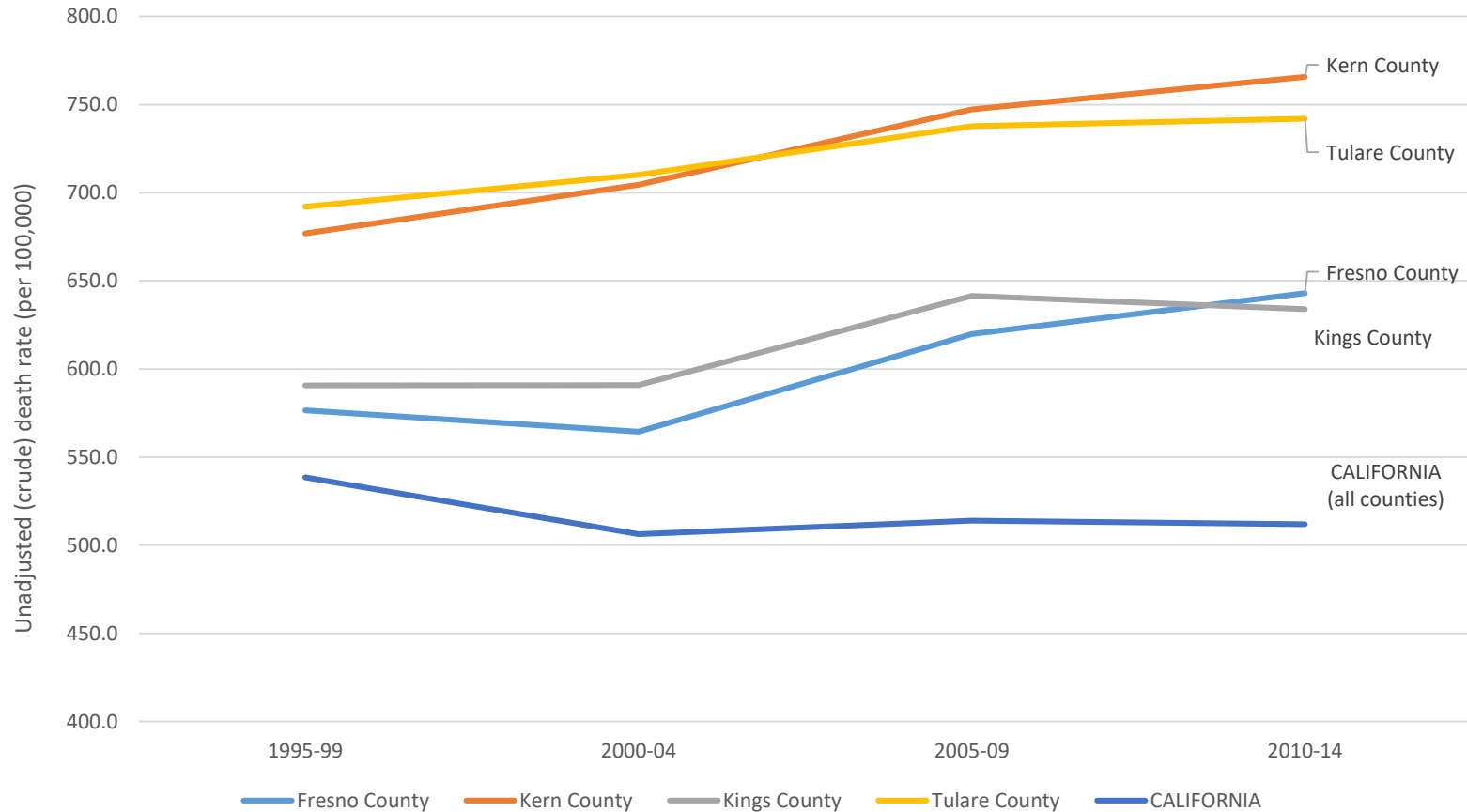


Among the most severely impacted regions of California is the San Joaquin Valley, a region facing difficult economic challenges.

We focus here on the four southernmost counties—**Kern County, Tulare County, Kings County, and Fresno County**—where median household income has been stagnant for the past decade and poverty rates have steadily risen

Highest Death Rates | Most dramatic among middle-aged whites ages 40-64

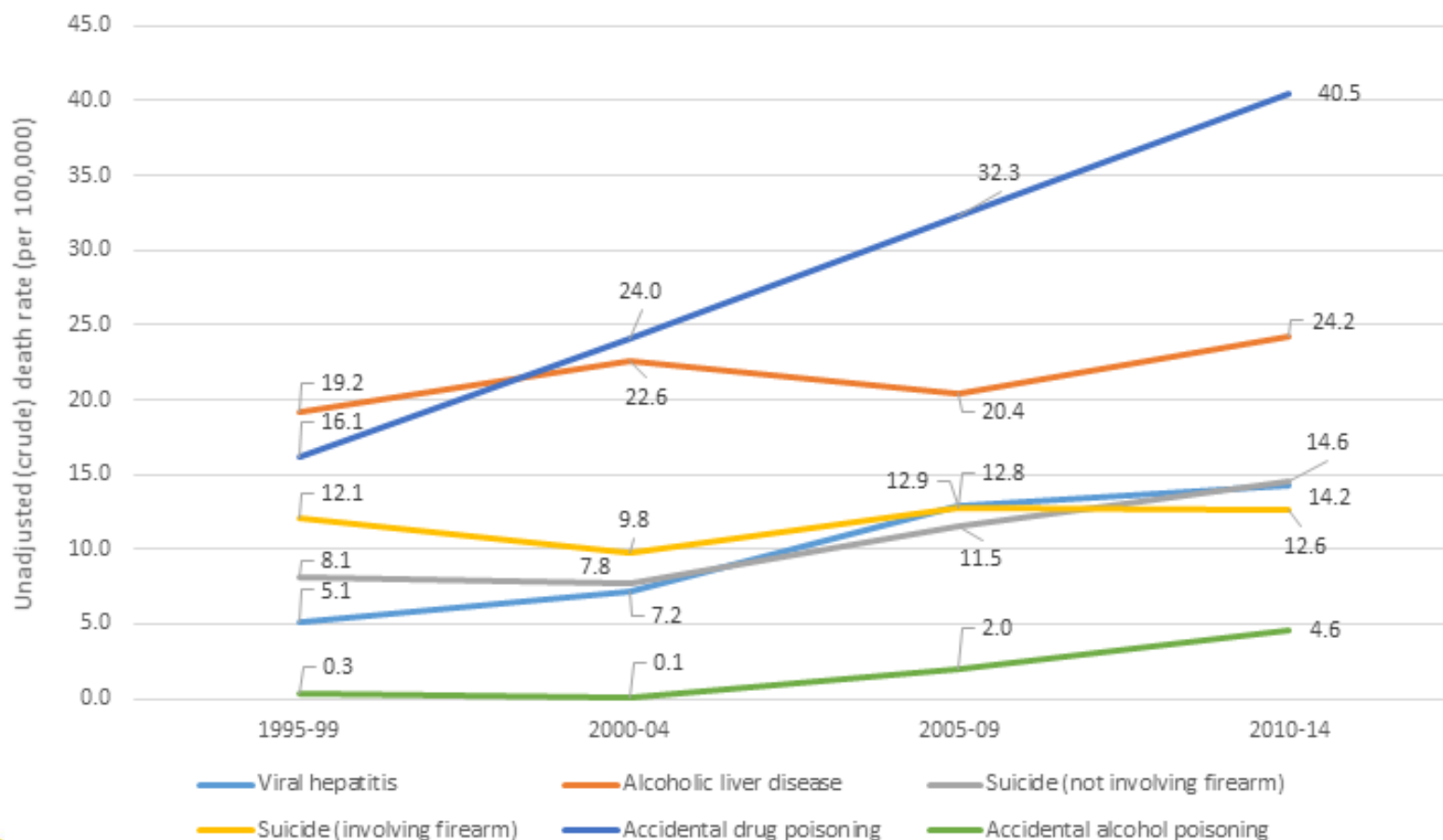
Death rates among middle-aged whites in Kern and Tulare are the highest in the Southern Central Valley region and have risen 11.2% since 1995.



Stress-related Deaths | Southern Central Valley sees dramatic increase among middle-aged whites ages 40-64

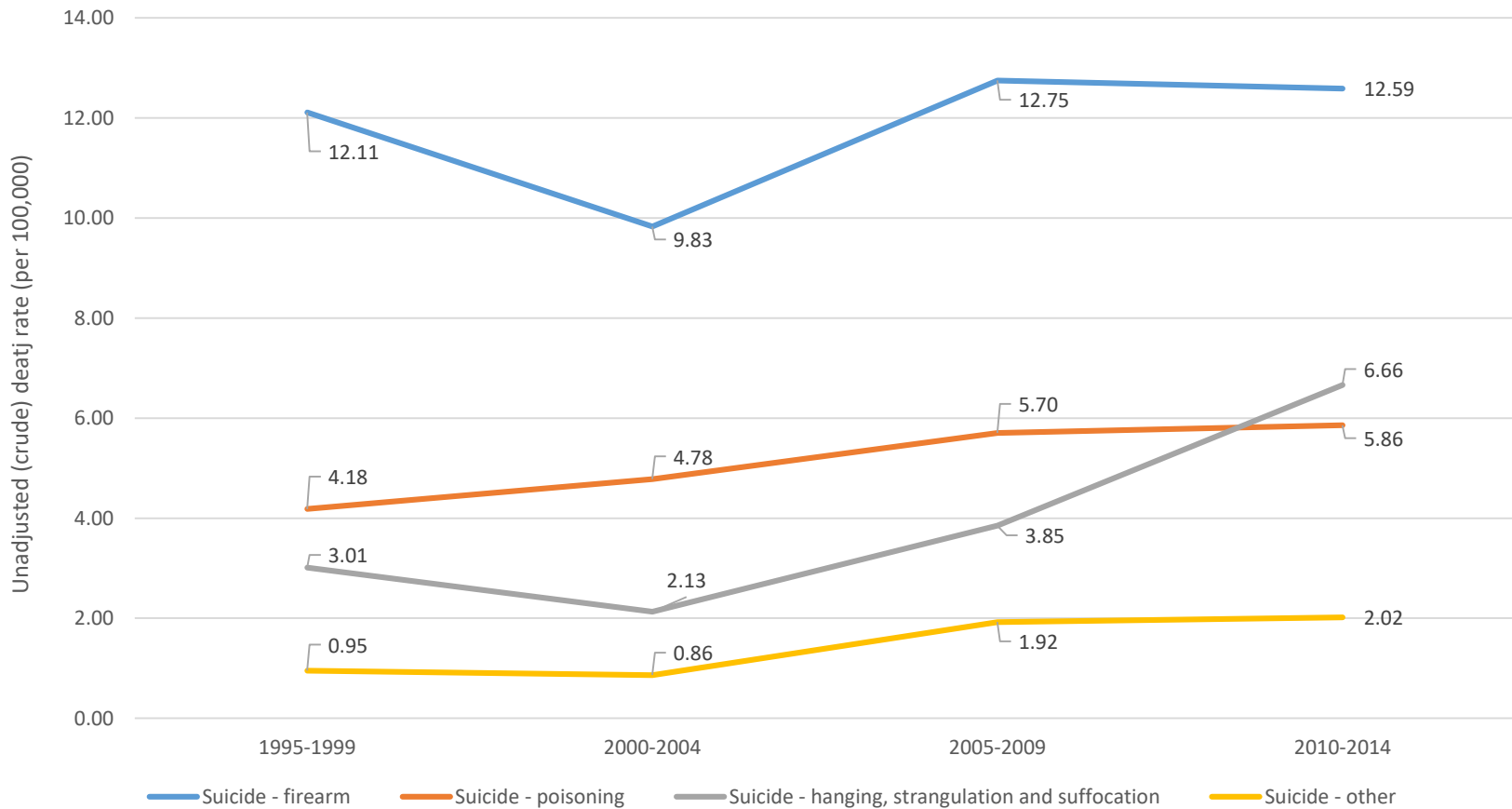


Diseases, injuries, and deaths that occur when people become depressed, turn to tobacco, drugs, or alcohol for relief, or commit suicide in desperation represent stress-related conditions. It is these causes of death that appear to be driving increasing death rates for middle age whites, particularly in communities struggling with economic challenges. Fatal drug overdoses have increased by 151%, viral hepatitis by 180%. Alcohol poisoning has increased 15-fold. **These increases far exceed state averages.**



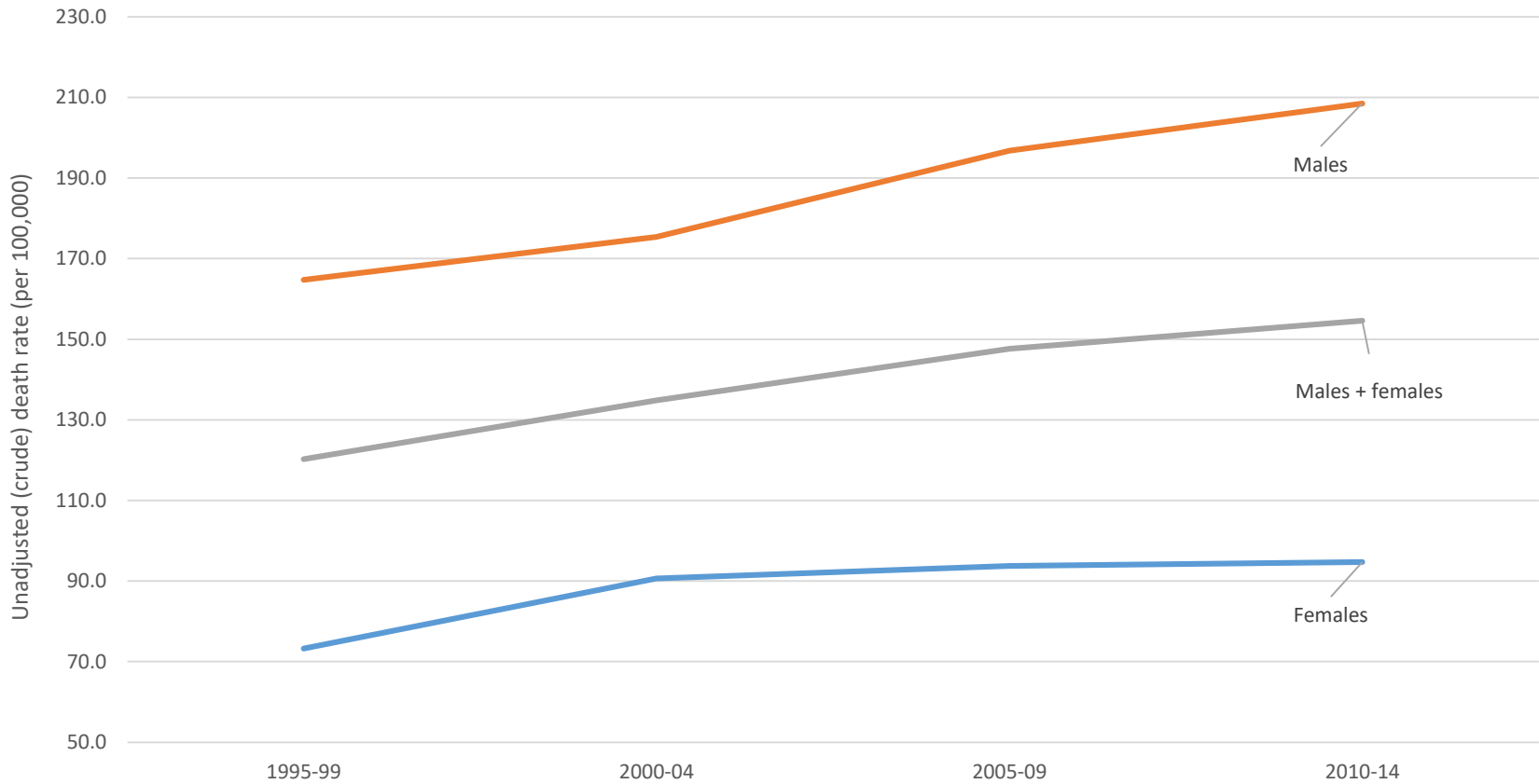
Suicides by Method | Sharp increases in Southern Central Valley since 1995

Persistent economic stresses can invoke stress, anxiety, depression, and despair. The suicide rate in the Southern Central Valley has increased sharply since 1995. The uptick has been most pronounced for suicides involving hanging, strangulation, or suffocation, which increased by 121.3% in the region and by 133.1% in Kern and Tulare counties.

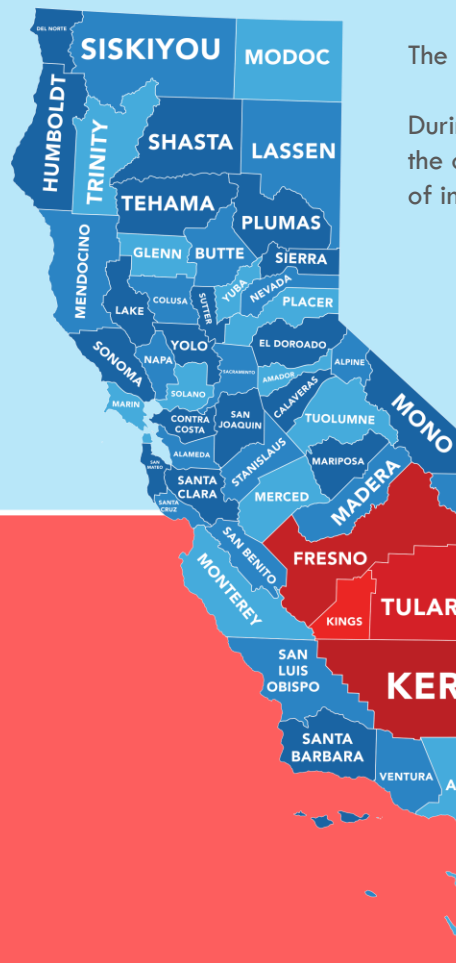


Younger Adults Impacted in Kern | Increased death rates among young white adults (ages 25-34)

In Kern County, death rates have also increased among young people. The all-cause mortality rate among whites ages 25-34 years increased by 29% between 1995-1999 and 2010-2014. Most of the increase in this age group occurred among men.



Alarming | California State vs Southern Central Valley Counties



The overall white death rate for ages 40-64 was 512 per 100,000 from 2010-2014.

During that same period, in the four California counties from the study (**shown in red**), the overall white death rate was almost 40% higher. That difference, and the rapid rate of increase among middle age whites, is stunning health experts.

512 deaths / 100,000 people

White death rate for ages 40 – 64 from 2010 – 2014



708 deaths / 100,000 people (almost 40% higher)

White death rate for ages 40 – 64 in Fresno, Kings, Kern and Tulare from 2010 – 2014



DEATHS: All Causes

The Central Valley Region | Building Healthy Communities



We must stand together to reweave our tattered social compact. Access to high-quality affordable healthcare is a crucial cornerstone of that **social compact**. The shocking statistics from this preliminary data indicate that these deaths are preventable, and prevention must be the focus of our public policy.

• **HEALTH AND SOCIAL SERVICES**

- Residents in Southern Central Valley have the highest rates of participation in the Affordable Care Act in California
- Addressing this crisis requires increased effort to expand coverage and connect residents to:
 - medical homes for primary care and chronic disease
 - behavioral health services to address stress-related disease
- The entire social safety net – from access to food to access to high quality childcare – needs to be strengthened if we are to turn these trends around

• **ECONOMIC MOBILITY**

- Health burden from suicides and substance abuse are poverty related
 - Stagnant incomes, low wages, unemployment, rising poverty rates, and poor opportunities for education erode hope for a better tomorrow
 - Policies to improve state and local economy, increase wages, and reduce economic inequality, are important to alter these health trends

• **COMMUNITY EMPOWERMENT**

- Increasing community voice and agency is critical to improving health outcomes. More resources to support community-based health and wellbeing are an important piece of the prevention puzzle.
 - The California Endowment continues to support grassroots community efforts to improve health outcomes through its 10-year, \$1 billion place-based initiative called Building Healthy Communities (BHC). Building Healthy Communities (BHC) is a 10 year, \$1 billion comprehensive community initiative launched by The California Endowment in 2010 to advance statewide policy, change the narrative, and transform 14 of California's communities most devastated by health inequities into places where all people have an opportunity to thrive. Three of the 14 BHC sites are located in the San Joaquin Valley.

Questions?



Learn more at www.buildinghealthycommunities.org #ChangeTheOdds



Twitter:

https://twitter.com/dr_tonyiton

@dr_tonyiton



Facebook:

<https://www.facebook.com/drtonyiton/>

@drtonyiton

Media Inquiries:

Sarah Reyes, Director of Communications
sreyes@calendow.org, W: (559) 443-5306
C: (559) 470-4545

Additional Questions:

Paula Braveman, MD, MPH, Professor, Family Community Medicine, UCSF School of Medicine
paula.braveman@ucsf.edu, W: (415) 476-6839
Mark Cullen, MD, Professor of Medicine, Biomedical Data Science, Health Research & Policy, Senior Fellow Stanford Institute for Economic Policy Research
mrcullen@stanford.edu, W: (650) 721-6209

PRELIMINARY DATA FROM AN ONGOING STATEWIDE STUDY

An Epidemic of White Death: A Canary in the Coal Mine?

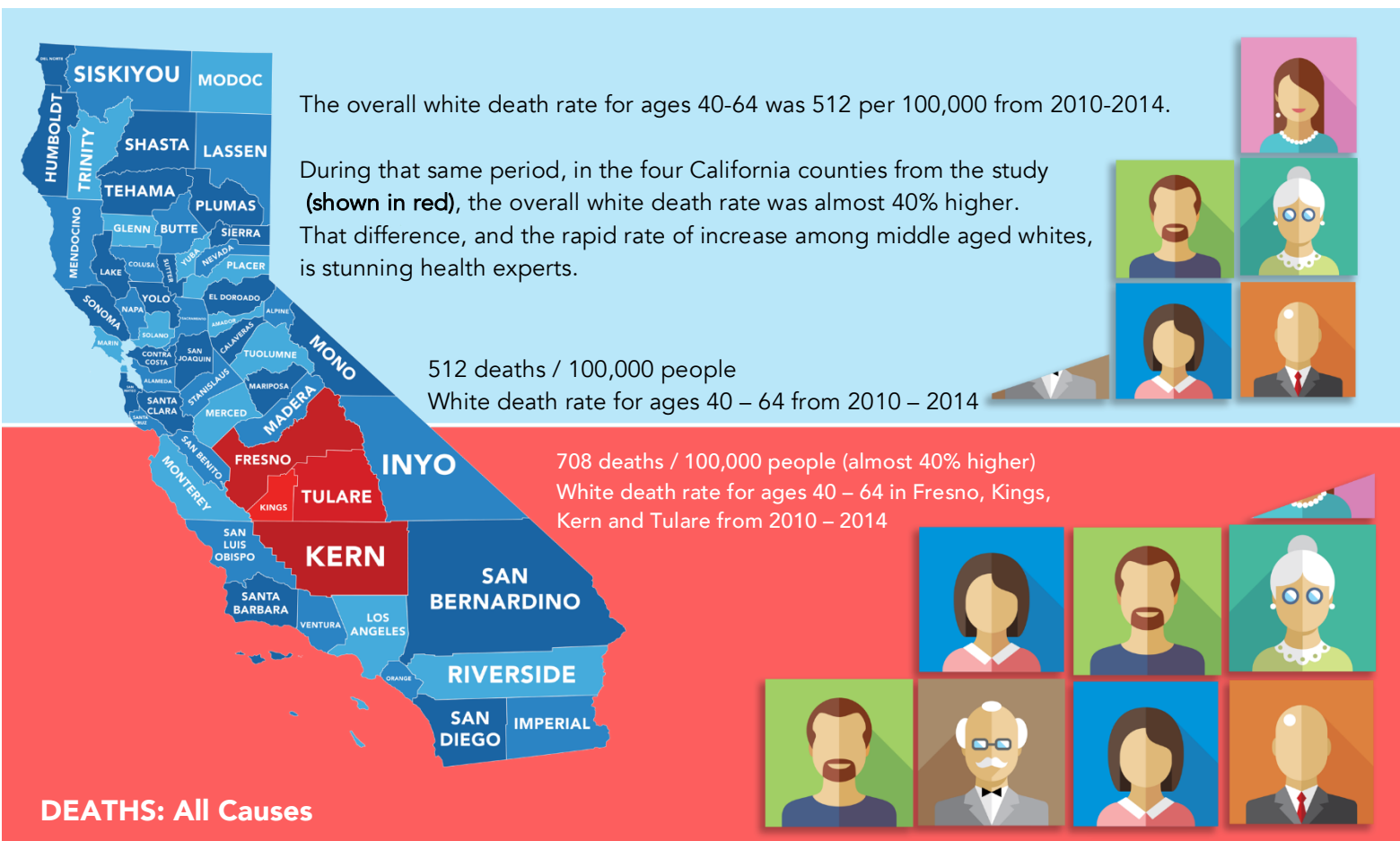
An alarming national trend wreaks havoc in California's South Central Valley

Introduction

Target Counties are among the poorest in the state, if not the nation: Fresno, Kern, Kings, and Tulare.

This is not the time to dismantle the health care safety net anywhere – particularly in an area and for a population that desperately needs it. This preliminary data from an ongoing statewide study targets four counties in California's Central San Joaquin Valley: **Fresno, Kern, Kings, and Tulare**. Residents in these areas are considered the poorest in the state. Any change in safety net services such as health coverage will have devastating and potentially life threatening effects not only in California, which is ground zero based on the findings, but in other rural parts of the country. All residents need to know the facts and that our social compact is being torn apart.

All Deaths in California State vs the Central Valley: Fresno, Kern, Kings, and Tulare



Red Alert

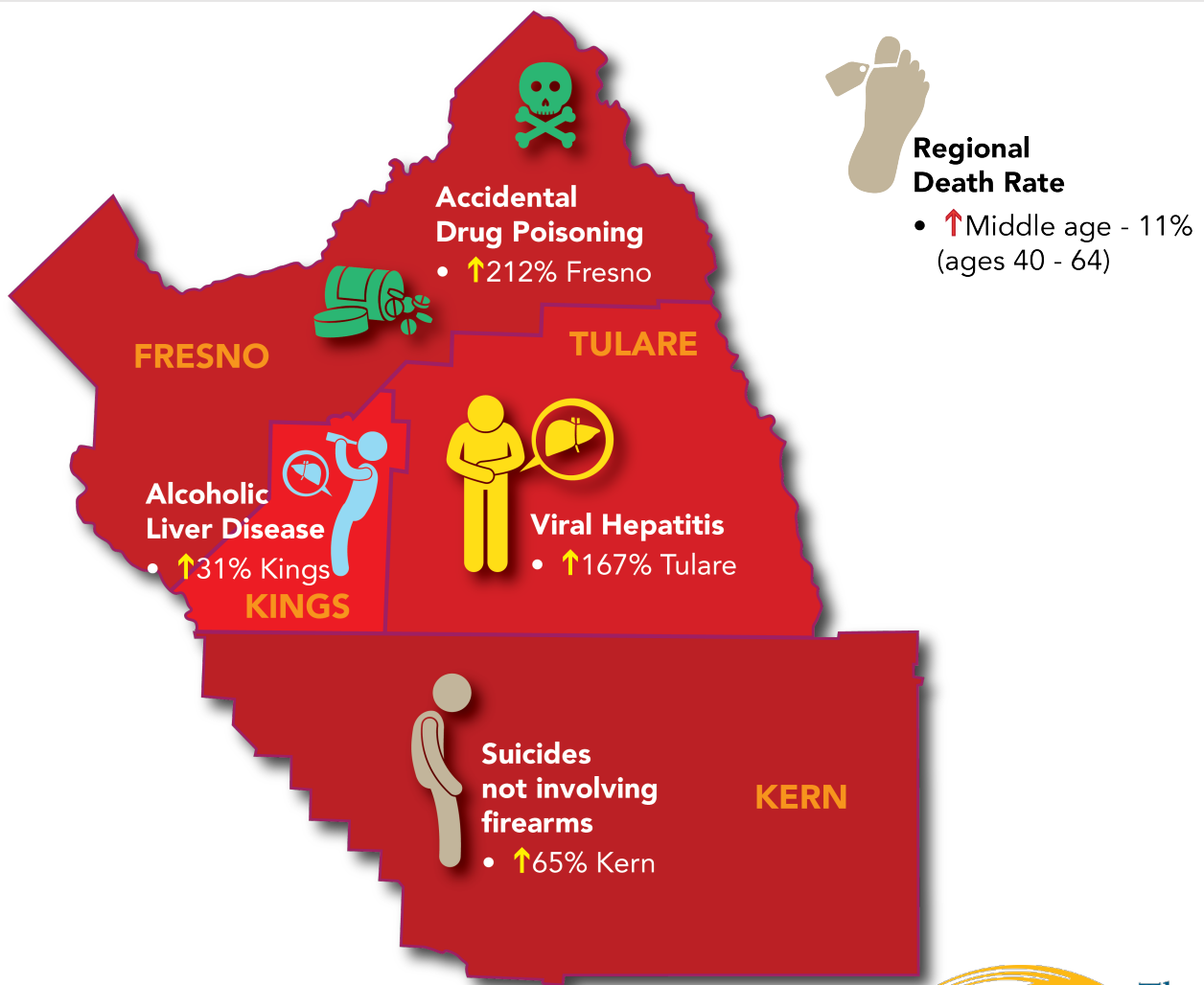
In the two southernmost counties of the Valley, Kern and Tulare, where the poverty rate in 2015 was 22% and 28% respectively, the rising death rates are alarming.

Death rates from stress-related conditions have climbed faster in the Southern Central Valley than they have statewide. Here are some examples:

- In Fresno County, the rate at which middle-aged white adults (ages 40-64 years) are dying from accidental drug poisoning has increased by 212% since the 1990s; and in Kern County it has increased 164% over the same period.
- In Tulare County, the death rate from viral hepatitis has increased by 167% since the 1990s.
- White women are being most affected. In Kern County, the rate at which young white men (ages 25-34 years) are dying from accidental drug overdoses has increased by 248% since the 1990s. Among women, the death rate appears to be rising faster.
- In Kern County, suicides by hanging, strangulation and suffocation among middle-aged whites have increased by 133% since the 1990s.

We cannot blame these deaths simply on the opioid epidemic. These are deaths of despair.

Code Red in Central California: Rising death rates in the Southern Central Valley ages 40-64





Press Release

FOR IMMEDIATE RELEASE

MEDIA CONTACT:

Sarah Reyes
W: (559) 443-5306
C: (559) 470-4545
sreyes@calendow.org

An Epidemic of White Death: A Canary in the Coal Mine? *An alarming national trend wreaks havoc in California's Central Valley*

Fresno, Calif. (Jan. 18, 2017) – According to preliminary data from an ongoing new health study, reducing access to health care or weakening the health care safety net could have severe consequences for the Central San Joaquin Valley of California. This is a region that already suffers from high unemployment, deep poverty and skyrocketing drug use...and surprisingly, the white population may be uniquely vulnerable in this region.

Working in partnership with The California Endowment, the Center on Society and Health at Virginia Commonwealth University, reports an unprecedented surge in the death rate for middle-aged whites living in this region (Kern, Fresno, Tulare, and Kings counties). Over the past 20 years across California, death rates among Black, Hispanic, and Asian adults ages 40-64 years have fallen by 16-20 percent. Among California Whites, however, they have decreased by only 5 percent. In this same 20-year period in this four-county region of the Southern San Joaquin Valley, white death rates have actually **increased by 11 percent!**

This ongoing study comes in the wake of national reports that show a worrying decline in life expectancy in the U.S.

“Many Americans are really struggling to find opportunity in this new economy. In some regions of the country, a lot of people are losing hope, and turning to alcohol, drugs, and even suicide,” said Dr. Tony Iton, Senior Vice President with The California Endowment. “In the wake of these findings, this is the worst possible time to reduce access to health care or any health care safety net programs. Rather than dismantling our already fragile social compact, we need to be strengthening it so that all people have a meaningful shot at opportunity and good health.”

The new death rate data suggests that Whites in Kern and Tulare counties would be particularly vulnerable to reductions in health care access, but all rural communities in the Central Valley would suffer greatly, where Medi-Cal now serves close to half of all residents. Not surprisingly, Medi-Cal's expansion was the heaviest in the state's rural counties, where most of the low-income residents live. Specifically, Tulare County had the state's highest level of Medi-Cal enrollment.

In addition to the weak economy that strangles the above counties, Steven Woolf, one of the lead authors of the report, cites other factors for the increase in death rate among whites.

“Household incomes have been stagnant and poverty rates have been climbing in these counties over a period of many years,” he said. “Stress, anxiety and depression are taking their toll on this population. The economy is literally costing lives.”

The California Endowment continues to support grassroots community efforts to improve health outcomes through its 10-year, \$1 billion place-based initiative called Building Healthy Communities (BHC). Three of the 14 BHC sites are located in the San Joaquin Valley.

“We believe California is stronger when we stand as one and work together to reweave our tattered social compact. Access to high quality affordable healthcare is a crucial cornerstone of that social compact,” Iton said. “For too many Californians, the odds are that our zip codes are more important than our genetic codes when it comes to our health. We think it is time to change those odds.”

For additional information, feel free to contact:

Paula Braveman, MD, MPH, professor, UCSF School of Medicine
(415) 476-6839
Paula.braveman@ucsf.edu

Mark R. Cullen, MD, professor of medicine (general internal medicine), of biomedical data science, of health research and policy (epidemiology) and senior fellow at the Stanford Institute for Economic Policy Research
(650) 721-6209
mrcullen@stanford.edu

About The California Endowment

The California Endowment, a private, statewide health foundation, was established in 1996 to expand access to, quality health care for underserved individuals and communities, and to promote fundamental affordable improvements in the health status of all Californians. The Endowment challenges the conventional wisdom that medical settings and individual choices are solely responsible for people’s health. At its core, The Endowment believes that health happens in neighborhoods, schools, and with prevention. For more information, visit The California Endowment’s homepage at www.calendow.org.

About BHC

Building Healthy Communities (BHC) is a 10 year, \$1 billion comprehensive community initiative launched by The California Endowment in 2010 to advance statewide policy, change the narrative, and transform 14 of California’s communities most devastated by health inequities into places where all people have an opportunity to thrive.

###