



May 17, 2017

Facility Inspection Report

Inspection Location:

Indiana Transportation Museum Inc.
701 Cicero Rd.
825 Park Drive
Noblesville, IN 46060

The above facility is operated by the Indiana Transportation Museum Inc., a domestic nonprofit corporation. The facility is located within the larger boundary of Forest Park (City of Noblesville); an inspection was performed on 5/17/2017 to evaluate possible environmental concerns. This is an initial evaluation to determine if reported concerns were valid and not comprehensive in nature, follow up inspections may be necessary to fully document the extent of the environmental impacts.

No building interiors were inspected, only the outside maintenance and storage area of the grounds as indicated on the attached facility map. Comments and observations will be attached to each of the photographs taken during the inspection.

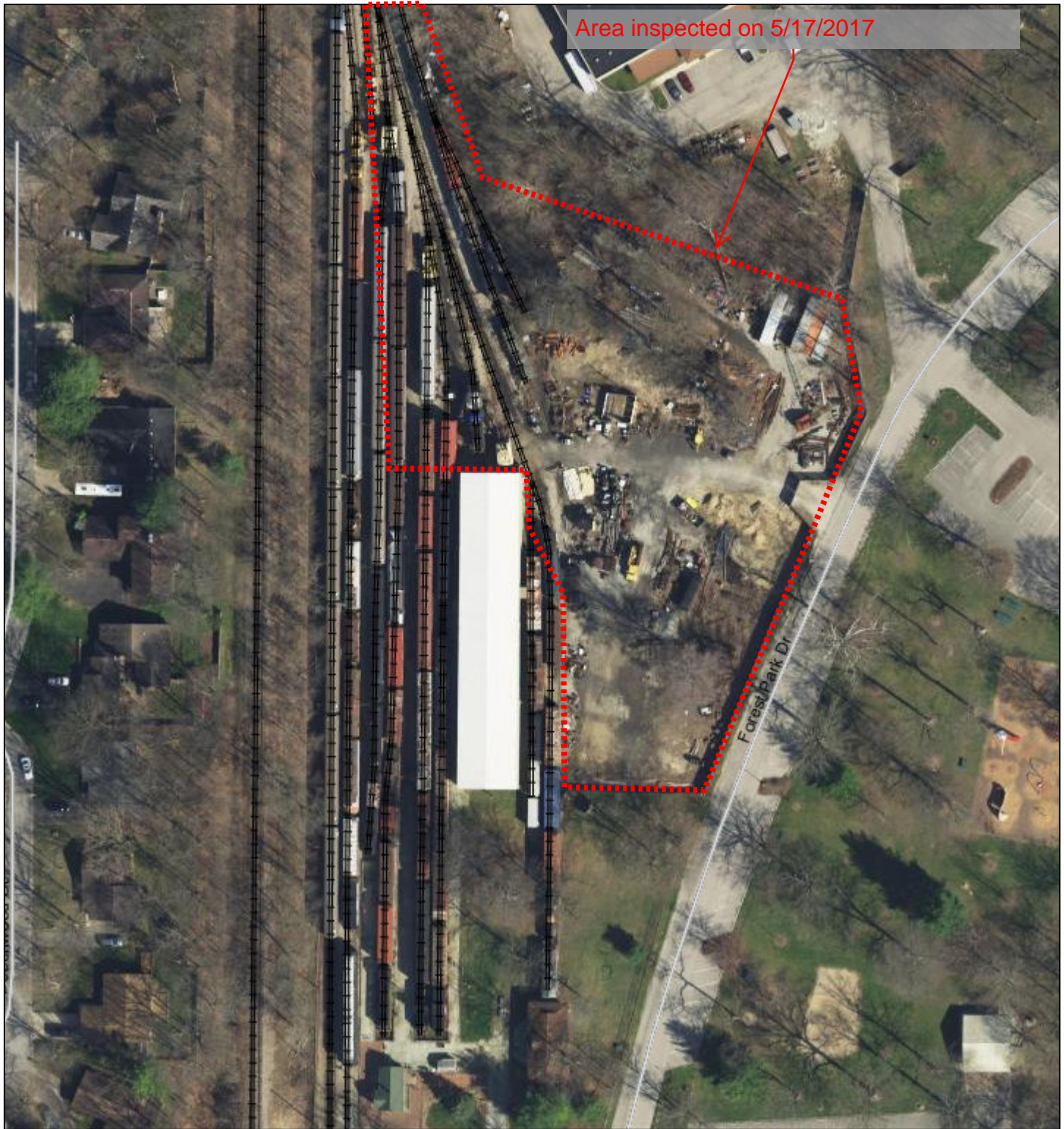
Based on my initial observations and items noted in my attached photographs, I have concluded that this facility has serious issues with outside storage of fluids and other items that pose a significant risk to ground and surface waters. If this were a City operated facility inspected by IDEM, we would be facing serious violations and enforcement action. I am recommending that prompt action be taken to perform a more comprehensive evaluation so that appropriate corrective actions and proper clean up can be documented.

Respectfully,

Tim Stottlemeyer

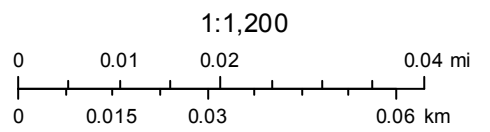
Tim Stottlemeyer
MS4 Program Manager
City of Noblesville

Indiana Transportation Museum



Area inspected on 5/17/2017

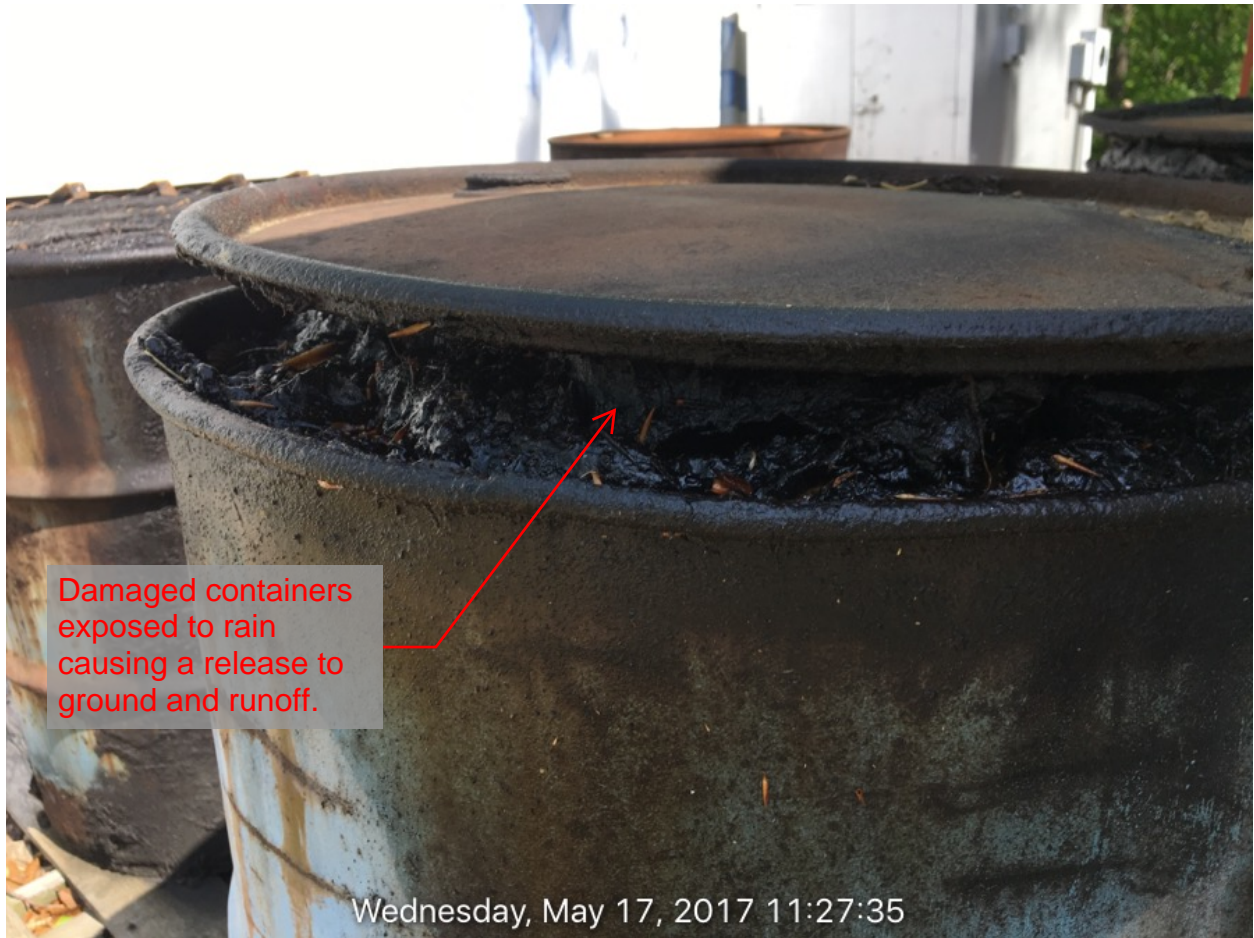
May 17, 2017



Basemap information here







Damaged containers exposed to rain causing a release to ground and runoff.

Wednesday, May 17, 2017 11:27:35



Leaking container.

Wednesday, May 17, 2017 11:27:43





Full containers
improperly stored.

Wednesday, May 17, 2017 11:31:51



Wednesday, May 17, 2017 11:32:05

ZEPRIDE™
 A FAST-ACTING GENERAL-PURPOSE CLEANER & DEGREASER
 RAPID EMULSIFICATION OF OIL AND GREASE FOR METALS AND MANY OTHER SURFACES

APPROVED BY THE U.S.D.A. FOR USE IN FEDERALLY INSPECTED
 "DIRTY PLANTS"
 See page 10

DIRECTIONS:

For Degreasing Automobile Engines, Chassis, Etc.: Dilute 1 part product with 3 to 5 parts hot water. For very greasy surfaces, allow to soak 15 to 20 minutes before rinsing with a strong stream of water. ZEP RINSE-GUN does a good rinsing job.

For Use in a Steam Cleaning Machine: Dilute 1 part product with 10 to 30 parts water, depending on degree of soil.

For Cleaning Painted and Impregnated Machinery and Equipment: Such as tool and stamping machinery, newspaper presses, linotype machines, bottling equipment, textile machinery, and the like. Dilute 1 part ZEPRIDE with 1 to 5 parts water depending upon the degree of soil. Apply by spraying, wiping, or scrubbing. (Dilution with hot water will increase cleaning power of ZEPRIDE.) Allow solution to soak on machinery for two or three minutes and then wipe dry with clean cloths or rinse with water.

NOTE: High concentrations of ZEPRIDE can attack painted surfaces and polished aluminum. Test an inconspicuous area before use, or use very dilute solution. ALWAYS RINSE AFTER USE.

Plastic and Vinyl Laboratory: Dilute 1 part product with 3 to 10 parts water. Wipe or spray on surface to be cleaned, allow to remain a few seconds, then wipe off with a clean, damp cloth.

Painted Surfaces: Dilute 1 part product with 10 to 30 parts water. Apply solution with cloth or sponge. Wipe off. Allow to remain a few seconds, then wipe off with clean, damp cloth or sponge.

White Metal: Dilute 1 part product with 1 to 3 parts water, depending on degree of soil. Spray solution on area and allow to remain on surface approximately one minute. Rinse with strong stream of water. Rubbing spots may need reworking.

Convertible & Vinyl Toys: Dilute 1 part product with 1 to 5 parts water, scrub with stiff brush. Rinse thoroughly with water. Solutions of ZEPRIDE may damage certain toys.

FLUOROS: Composition - Cleaning: Dilute 1 part product with 20 to 30 parts water and scrub floor or steel surface. Rinse floor thoroughly. Clean and apply to floor. Allow solution to remain on surface approximately five to ten minutes. Then scrub with floor machine. DO NOT pour residue on any floor. Rinse with water. Rinse with warm water.

CAUTION: DO NOT apply ZEPRIDE undiluted to any floor.

FLOORS: Heavy Duty Cleaning: Dilute 1 part ZEPRIDE with 10 to 20 parts hot water. Scrub floor to clean. Rinse with water. Rinse with warm water. Depending on use - scrub thoroughly and

For Automatic Deterging Machines: Use three ounces of ZEPRIDE per gallon of water for general cleaning. For heavy-duty cleaning, degreasing of concrete, and wax stripping, see six ounces of ZEPRIDE per gallon of water.

HAZARD STATEMENT: Contains sodium metasilicate and ethylene glycol monobutyl ether. CAUSES EYE BURNS. HARMFUL IF INHALED OR ABSORBED THROUGH THE SKIN.

DANGER!
 Contains sodium metasilicate and ethylene glycol monobutyl ether. CAUSES EYE BURNS. HARMFUL IF INHALED OR ABSORBED THROUGH THE SKIN.

Can cause severe skin and eye irritation or inflammation. Inhalation of spray mist of vapors may cause respiratory irritation. DO NOT breathe vapors or spray mist. DO NOT swallow this product. Repeated exposure can have cumulative effects. Exposure may aggravate existing skin or respiratory disorders. Further information on the effects of overexposure is included on the Material Safety Data Sheet, which is available upon request.

Zep advises limiting exposure to all chemical products. Wear eye-protective splash-proof safety goggles during product use and whenever eye contact is possible, especially contact lens wearers. Wear natural rubber, nitrile, neoprene, or other resistant gloves. Use product in well-ventilated areas only. Open windows, doors, and use exhaust fans in enclosed areas. Remove contaminated clothing promptly and DO NOT rewear until thoroughly cleaned. After handling, wash hands thoroughly with soap and water.

FIRST AID:
EYES: Immediately flush eyes with plenty of water for at least 15 minutes, occasionally lifting the upper and lower eyelids. Get medical attention immediately.
SKIN: Wash contaminated skin immediately and thoroughly with soap and water. Apply a skin cream, ointment, or emollient to soothe irritated skin.
INHALATION: Move exposed person to fresh air at once. If breathing is stopped, perform artificial respiration. Get medical attention immediately. Wearing oxygen, if available, is preferred. If not available, use mouth-to-mouth respiration. Do not use mouth-to-mouth respiration if you have a sore throat or mouth ulcers. Do not use mouth-to-mouth respiration if you have a sore throat or mouth ulcers. Do not use mouth-to-mouth respiration if you have a sore throat or mouth ulcers. Do not use mouth-to-mouth respiration if you have a sore throat or mouth ulcers.

INGESTION: If product is swallowed, DO NOT induce vomiting. Rinse mouth. Do not eat, drink, or use tobacco, alcohol, or any other substances until medical attention is obtained. Get medical attention immediately.

DISPOSAL AND/OR SPILL INFORMATION: As with all cleaning and maintenance products, disposal or maintenance procedures should be determined by local, state, and federal regulations. Do not pour down drain or into water. If product is spilled or contained and cannot be used, placing the product in a sealed, absorbent material, such as a spill kit, and dispose of it in a sealed container. Do not store at temperatures below 32°F. Keep this product away from heat and fire products.

PHYSICAL AND CHEMICAL PROPERTIES: All detergents used in the manufacture of this product are biodegradable.

PROD. #0561 4988
 55 Gallon
 1403604
 14056288

Empty container properly stored... this was the exception.
Most containers had product and or combination of rain
and product resulting in a release and violation.



Wednesday, May 17, 2017 11:32:52



Batteries improperly stored containing hazardous materials.

Wednesday, May 17, 2017 11:30:05



Random buckets with mystery fluids exposed to the elements causing a release. Heavy staining.



Wednesday, May 17, 2017 11:35:57



Typical of many containers... partially full of rain mixed with product.



Wednesday, May 17, 2017 11:38:50

Heavy staining from improper storage and handling. Improperly located directly next to a drainage way.



heavy staining...

No drain plug.

Wednesday, May 17, 2017 11:39:41



Secondary containment has no plug resulting in a release of trapped fuel onto the ground and drainage way.

Wednesday, May 17, 2017 11:39:55

Building roof is collapsing onto unsecured containers currently leaking. This location has several dozen containers of various sizes and unknown substances.



Wednesday, May 17, 2017 11:40:43

Dozens of smaller containers in this building currently leaking.



Wednesday, May 17, 2017 11:41:27

Clusters of containers previously and or currently leaking resulting in a release to ground and surface waters.



Wednesday, May 17, 2017 11:41:40

partially full of rain and product.



Wednesday, May 17, 2017 11:41:53





Wednesday, May 17, 2017 11:47:26

Attempts at proper storage and protection from the elements are insufficient.



Wednesday, May 17, 2017 11:48:00



Wednesday, May 17, 2017 11:52:55

More batteries exposed to the elements.



Wednesday, May 17, 2017 11:52:02

Heavy staining under several pieces of stored equipment.



Containers found in clusters all over the inspected area, some partially full with no labels.





Heavy staining under several pieces of older equipment.

Wednesday, May 17, 2017 11:59:46