

EUREKA VALLEY / HARVEY MILK MEMORIAL BRANCH LIBRARY

COMMUNITY MEETING
WEDNESDAY, 12.14.2016



Prepared by:
San Francisco Public Works
Building, Design, & Construction
Landscape Architecture Section

Design Team

Jasmine Kaw, Landscape Architect
Brandon Johnson, Landscape Arch. Assistant
Winnie Chang, Landscape Architect Intern



Agenda

I. Welcome:

Agenda
Introductions
Meeting Objectives

II. Site Issues & Challenges

III. Existing Site Condition

IV. Proposed Landscape Improvements

V. Discussion and Next Steps

COMMUNITY DISCUSSION AND ACTIONS TAKEN TO DATE

- **UPDATE** of Library's actions since the last community meeting
- **PROVIDE** an opportunity for input on the landscape improvements planned at the Eureka Valley / Harvey Milk Memorial Branch Library

II. Site Issues and Challenges

COMMUNITY DISCUSSION AND ACTIONS TAKEN TO DATE

1. Unleashed dogs
2. Illegal behavior during open hours:
 - **A plan to redesign the landscaping is currently under way**
3. Illegal behavior after hours
4. Use of restrooms
5. Use of the roof
6. Darkness around the library:
 - The library requested to have **the ficus trees on Pond st** trimmed to allow more light at night. When urban Forestry completed their survey, they found that the cutouts for the trees were an ADA issue. There was not enough room for a wheelchair or walker to pass. **As a result, the trees were removed in July and the sidewalk is being replaced.**
 - The **trees in the library parking lot bordering Pond st were trimmed in June**, to allow more light at night.
 - The **trees at the front of the parking lot on 16th st were trimmed in July.**
 - The **foliage in the back patio was cut back and thinned out**, allowing more light in the far corner of the parking lot and better visibility on the patio. This cleanup took place in July and included the grounds bordering the library. A good deal of trash was also removed.
 - The **light newr the plaza was repaired in January** and is working.
 - **The junction box at the front of the building was moved out of reach and to the back**, inside the fence, to avoid vandalism and the resulting outage of the lights in the eaves at the front and along Prosper st. This work was completed in July.
7. Litter on library grounds
8. Use of the parking lot
9. Use of the outdoor space
 - **Tentative landscaping plans are being discussed today for community input.**
10. Community building activities
11. Signage

III. Existing Site Conditions



EVALUATE SHARED EDGE BETWEEN LIBRARY AND NEIGHBORING HOUSES



16TH STREET TREES INTERFERING WITH OVERHEAD POWER LINES



DRIVEWAY TOO NARROW FOR LARGE INTERLIBRARY TRUCKS--BUILDING ROOF EAVES INTERFERE WITH CLEARANCE



EXISTING LANDSCAPING OVERGROWN, EVALUATE EXISTING IRRIGATION SYSTEM



EVALUATE EXISTING FENCING/GATE:
• CLIMBABLE AND HEIGHT TOO LOW
• EXISTING FENCE OFF-ALIGNED



EVALUATE LIGHTING



EVALUATE PARKING LOT USE DURING & OFF LIBRARY HOURS



EVALUATE ENTRY PLAZA DESIGN--DONOR PLAQUE TO REMAIN



EVALUATE PLANTING AREAS BETWEEN FENCING AND ADJACENT STREETS/PROPERTIES



EVALUATE EXISTING COURTYARD'S USAGE



EVALUATE EXISTING FENCE AND GATE IN ADDITION TO ADJACENT PLANT COVERAGE



EVALUATE EXISTING FENCING/GATE:
• CLIMBABLE AND HEIGHT TOO LOW
• EXISTING FENCE OFF-ALIGNED

EVALUATE ALL PLANTING AREAS & NICHES



VI. Proposed Landscape Improvements

Prosper Street.....

- COBBLED PAVING
- REMOVE PLANTING
- ORNAMENTAL RAILING AT PLANTING AREA
- EVALUATE AND UPDATE SIGNAGE

Back Courtyard & Landscape

- CLEAR, GRUB, AND EVALUATE THE EXISTING PLANTING
- INCREASE VISIBILITY FROM THE STREET
- EVALUATE AND UPDATE LIGHTING
- COORDINATE PROPERTIES
- HARDY ORNAMENTAL PLANTING
- MAKE COURTYARD MORE INVITING FOR PROGRAMMED ACTIVITIES



16th Street Frontage/Plaza.....

- COBBLED PAVING
- EVALUATE AND UPDATE SIGNAGE
- HARDY ORNAMENTAL PLANTING
- ORNAMENTAL RAILING AT CURBS, WALLS, AND PLANTING AREAS
- REDUCE SEATING AND PLANTING AREAS
- MODIFY THE EXISTING PLAZA FOR:
 - + BETTER TRUCK ENTRANCE TO MEET THE LIBRARY'S NEEDS
 - + ENGAGING THE PLAZA WITH THE STREET

Parking Lot.....

- COBBLED PAVING
- HARDY ORNAMENTAL PLANTING
- ORNAMENTAL RAILING AT CURBS, WALLS, AND PLANTING AREAS
- REDUCE SEATING AND PLANTING AREAS
- EVALUATE AND UPDATE SIGNAGE
- IMPROVED DRIVEWAY ACCESS FROM 16TH AND POND STREETS



+



+



Cobbled Paving

Landforms in Planting Areas

Ornamental Railing



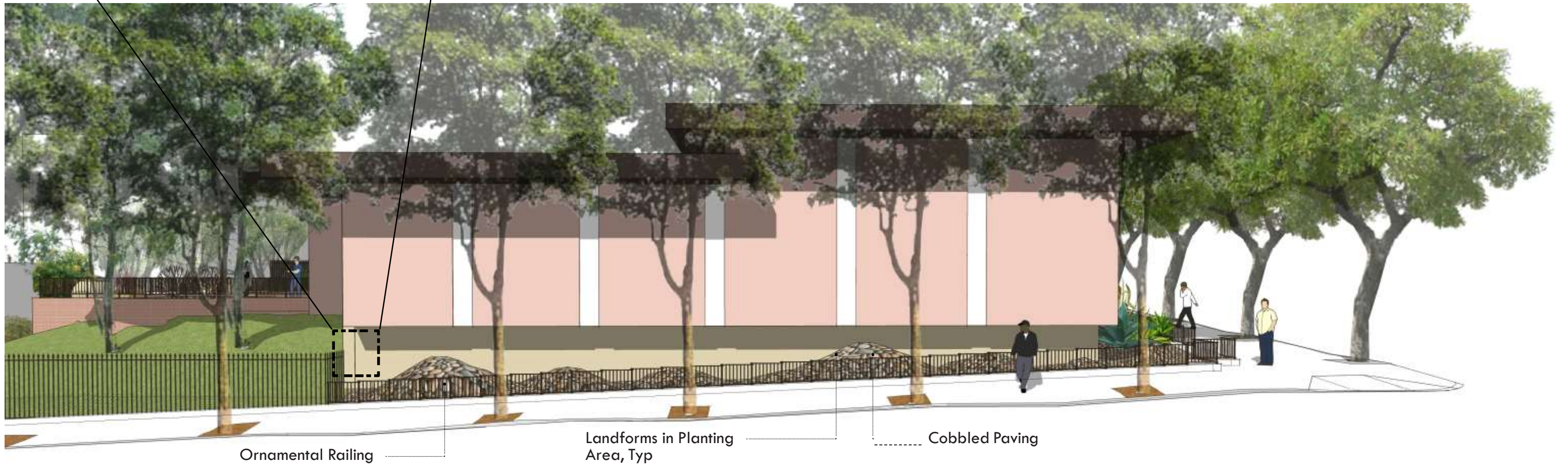
Cobbled Paving, Typ

Landforms in Planting Area, Typ

Ornamental Railing



- Cobbled Paving
- Landforms in Planting Area
- Ornamental Railing



Ornamental Railing

Landforms in Planting Area, Typ

Cobbled Paving



+



+



+



Cobbled Paving

Landforms in Planting Areas

Ornamental Railing

Hardy Ornamental Planting



Ornamental Railing

Cobbled Paving

Hardy Ornamental Planting

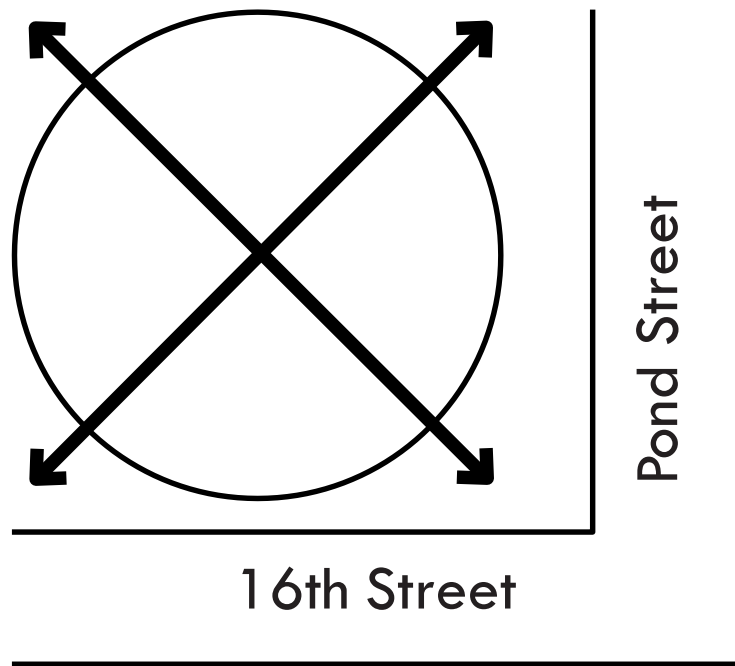
Landforms in Planting Areas



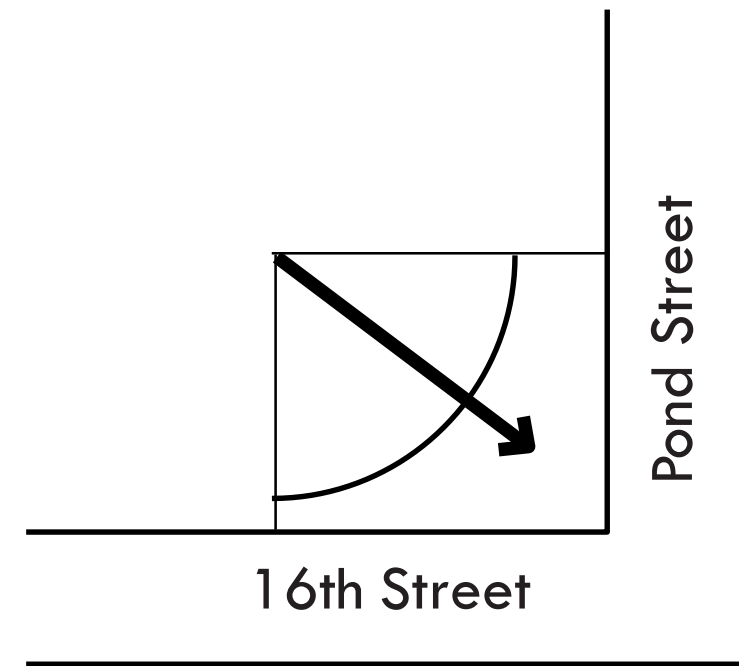
Landforms in Planting Areas
 Hardy Ornamental Planting
 Cobbled Paving
 Ornamental Railing



Landforms in Planting Areas
 Cobbled Paving
 Ornamental Railing
 Hardy Ornamental Planting



Existing Plaza Diagram



Proposed Plaza Diagram



Existing Plaza Perspective



Proposed Plaza Perspective



Ornamental Railing



Hardy Ornamental Planting



Raised Planters



Benches



Relocated Bicycle Rack



Ornamental Railing

Hardy Ornamental Planting

Raised Planters

Benches

Relocated Bike Rack



Cobbled Paving

+



Ornamental Railing

+



Hardy Ornamental Planting







New Light Fixtures



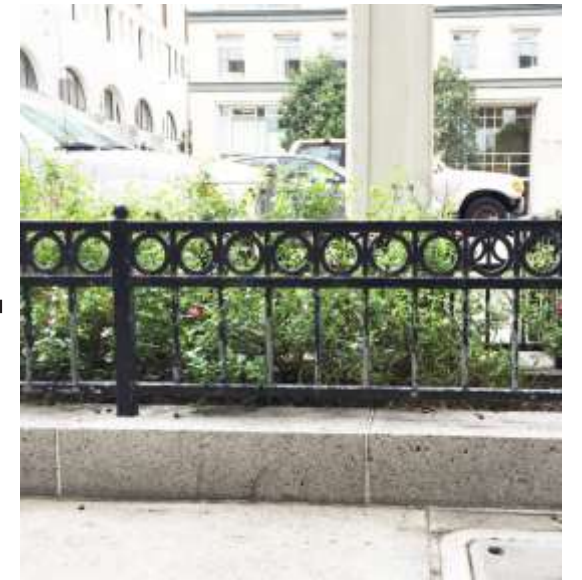
Hardy Groundcover Planting



Benches



Increase Visibility from the Street



Ornamental Railing



Existing



Proposed



Proposed



Existing



Proposed

IV. DISCUSSION & NEXT STEPS

THANK YOU