

DESIGN PHASE: THE SHORTLISTING PROCESS

Ideas, proposals and suggestions have been analysed thematically to identify broad land uses for the area. Reports that consider these uses are available on engage.regeneratechristchurch.nz

Different combinations of those uses have been assessed against the vision, objectives and land use assessment criteria to develop 10 possible combinations of land uses.

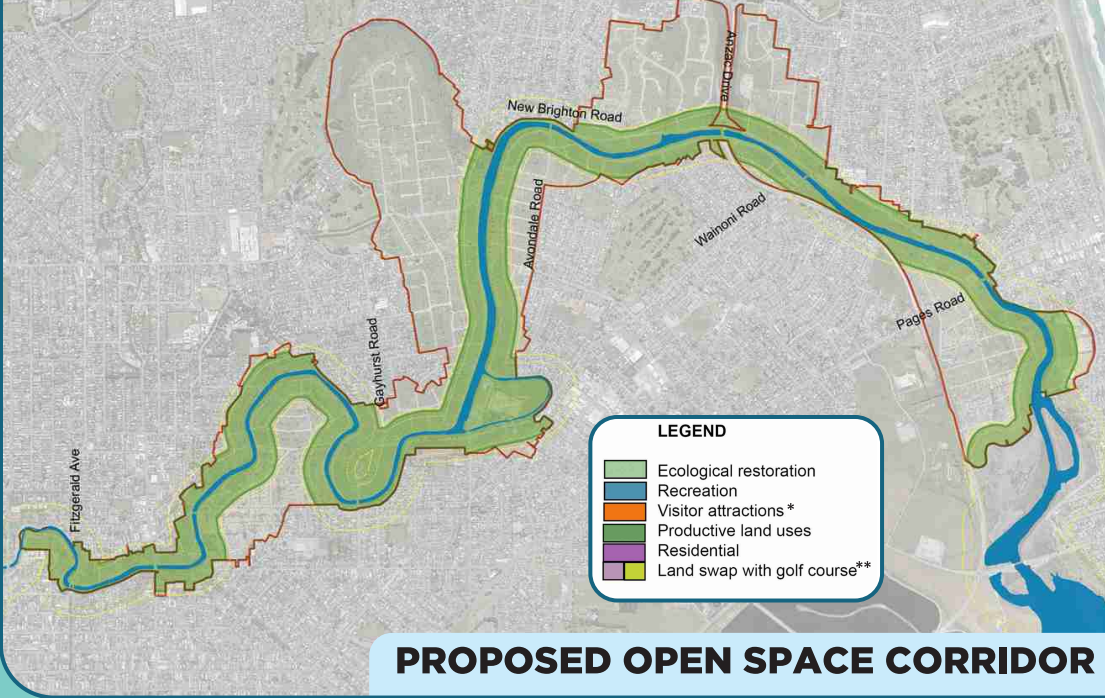
Proposed open space corridor

An open space corridor is a common element of all of the combinations of uses. The condition of the land immediately next to the river, together with the natural hazards affecting the area, mean an open space corridor along the length of the river is likely. The width of this open space corridor has yet to be confirmed and will vary.

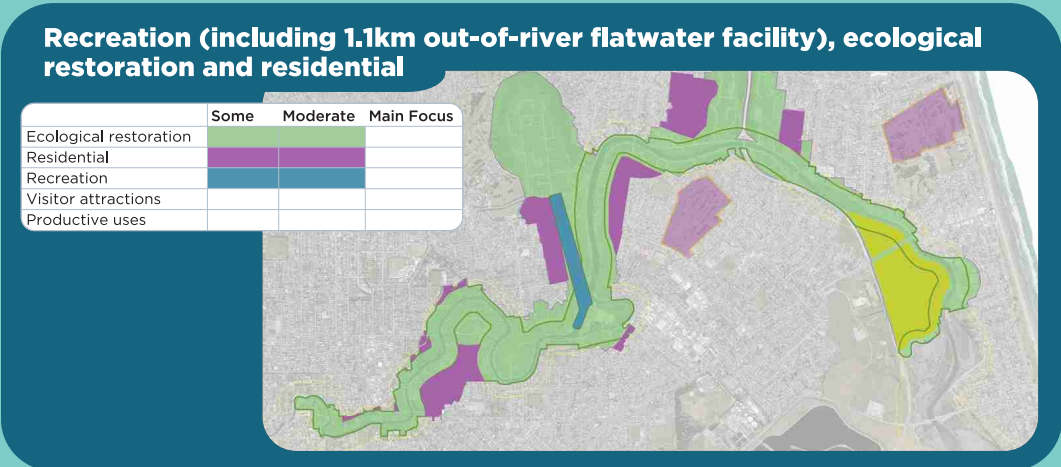
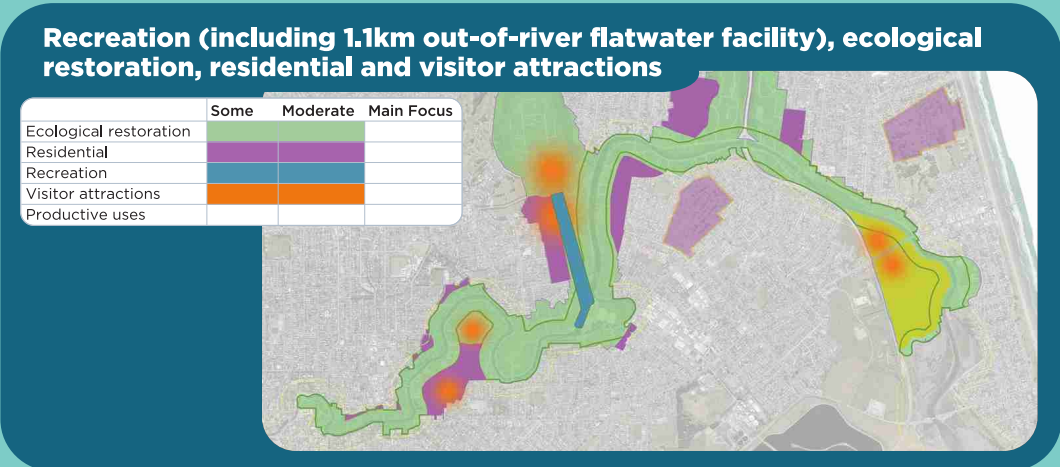
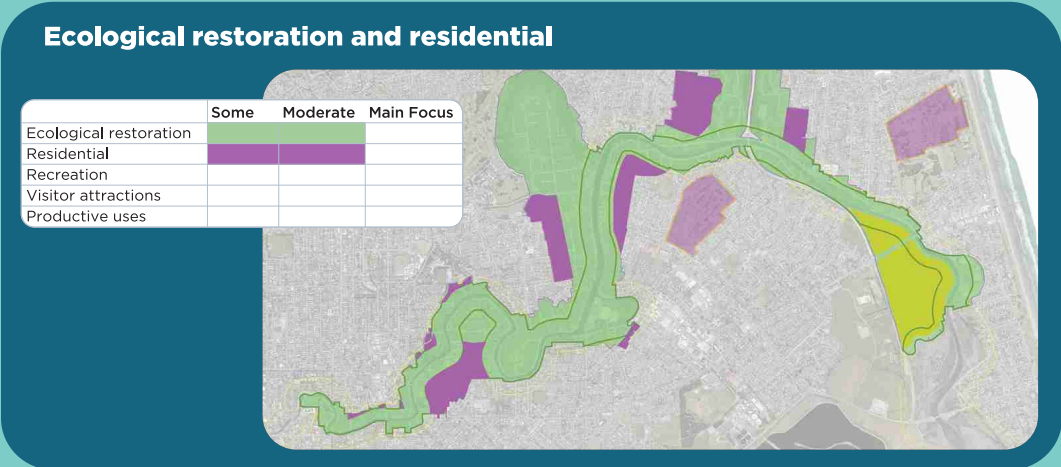
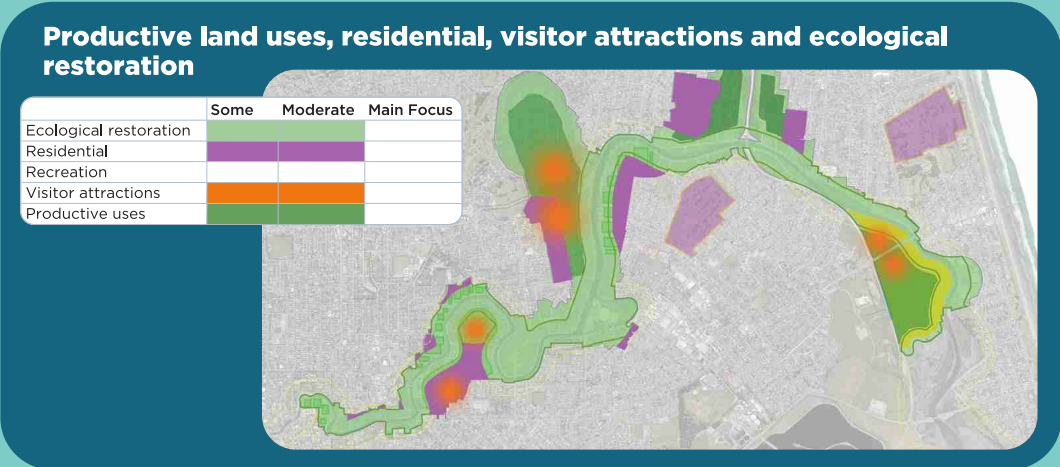
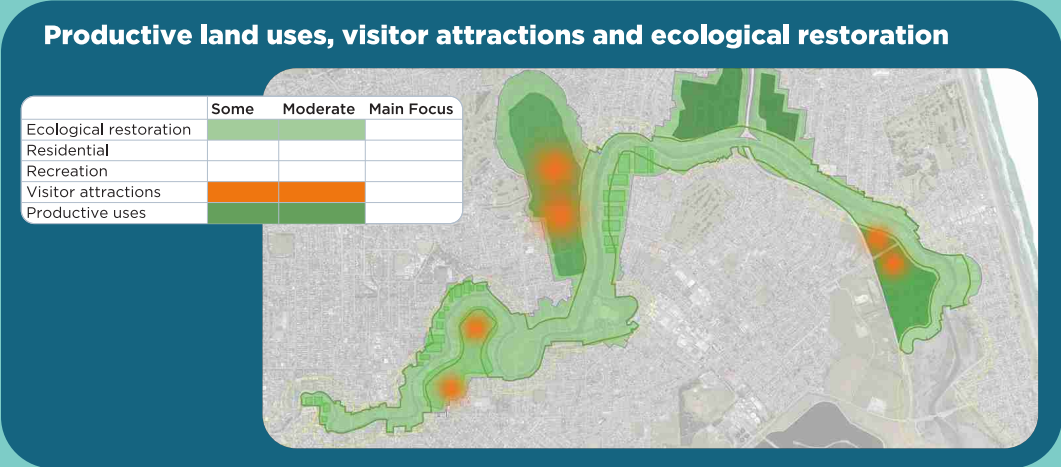
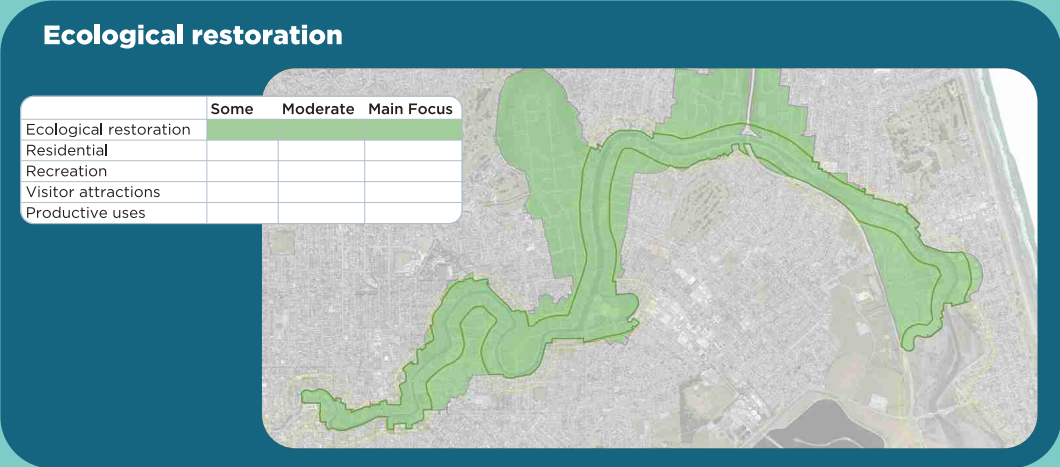
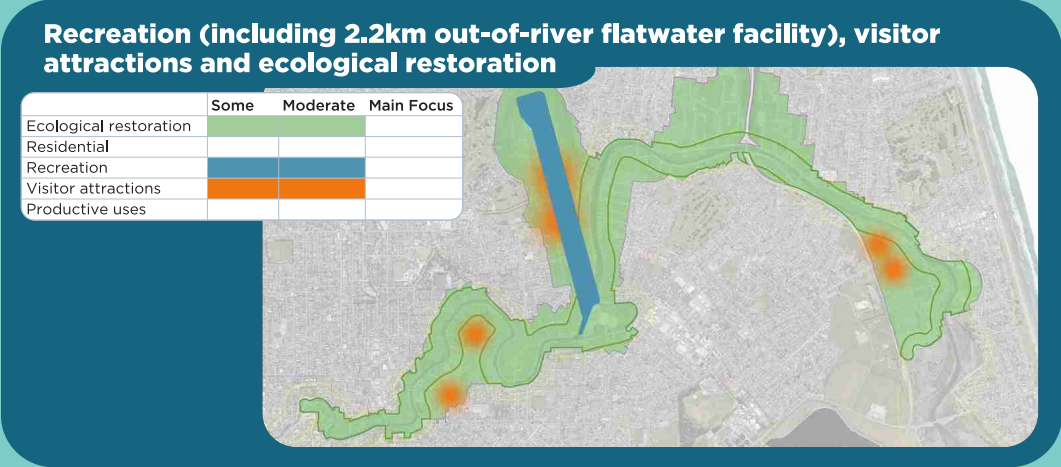
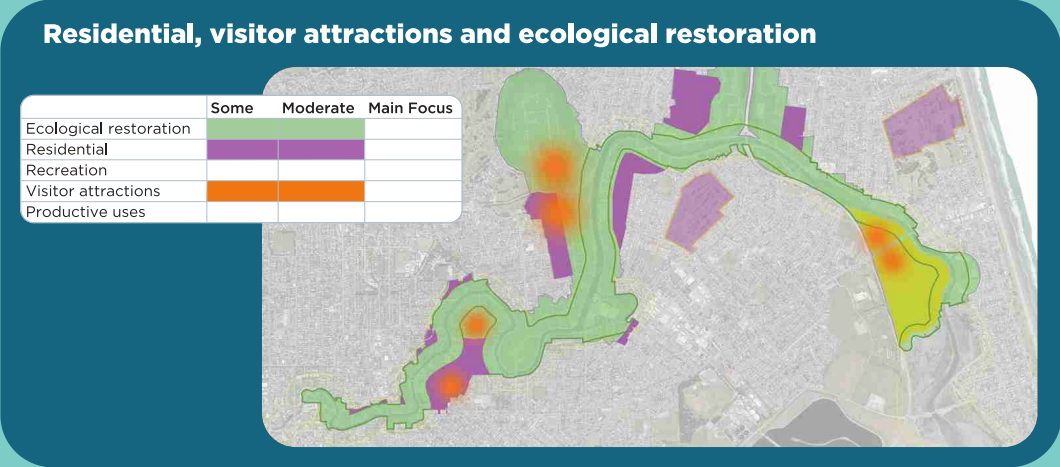
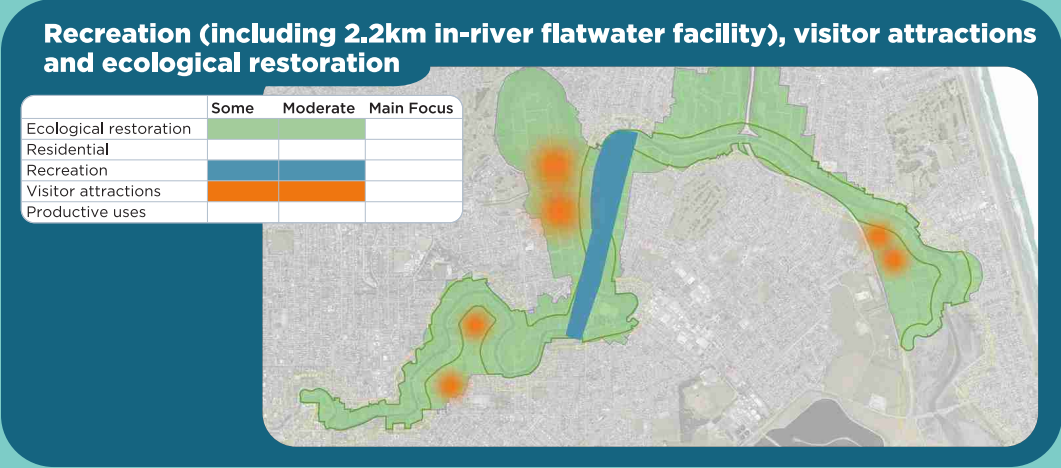
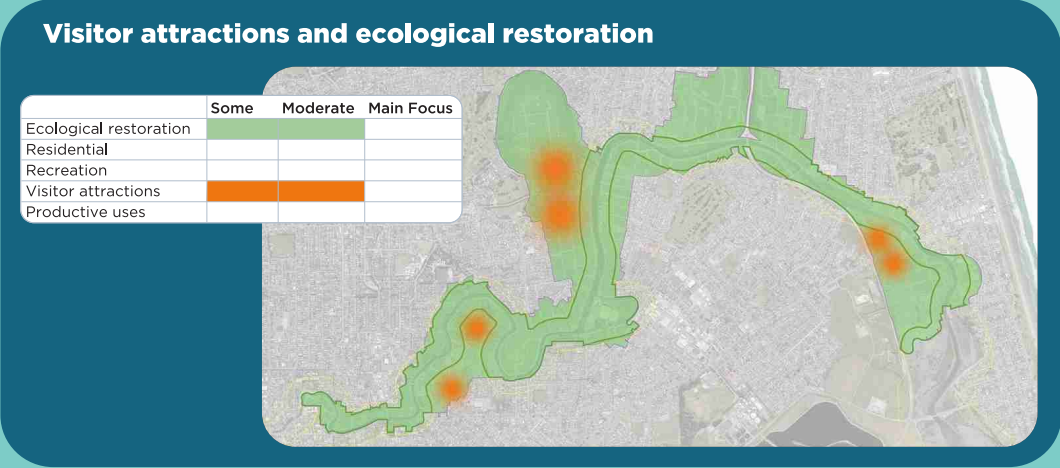
The corridor is likely to include:

- Community places and spaces
- Transport improvements, including walking and cycle trails
- Flood mitigation
- Water quality improvement

It could also include recreation (including an in-river festival style regatta water sports course starting at Fitzgerald Ave and/or an upgrade to the existing Kerr's Reach and downstream reaches) and small pockets of ecological restoration, adaptable residential uses, productive land uses and visitor attractions)



PROPOSED OPEN SPACE CORRIDOR



** For more information about the golf course land swap go to: engage.regeneratechristchurch.nz

* Visitor attractions could include ideas such as ecological experiences, whitewater sports, activity parks.