

DIFFERENTIATED ASSISTANCE

WHAT IS DIFFERENTIATED ASSISTANCE?



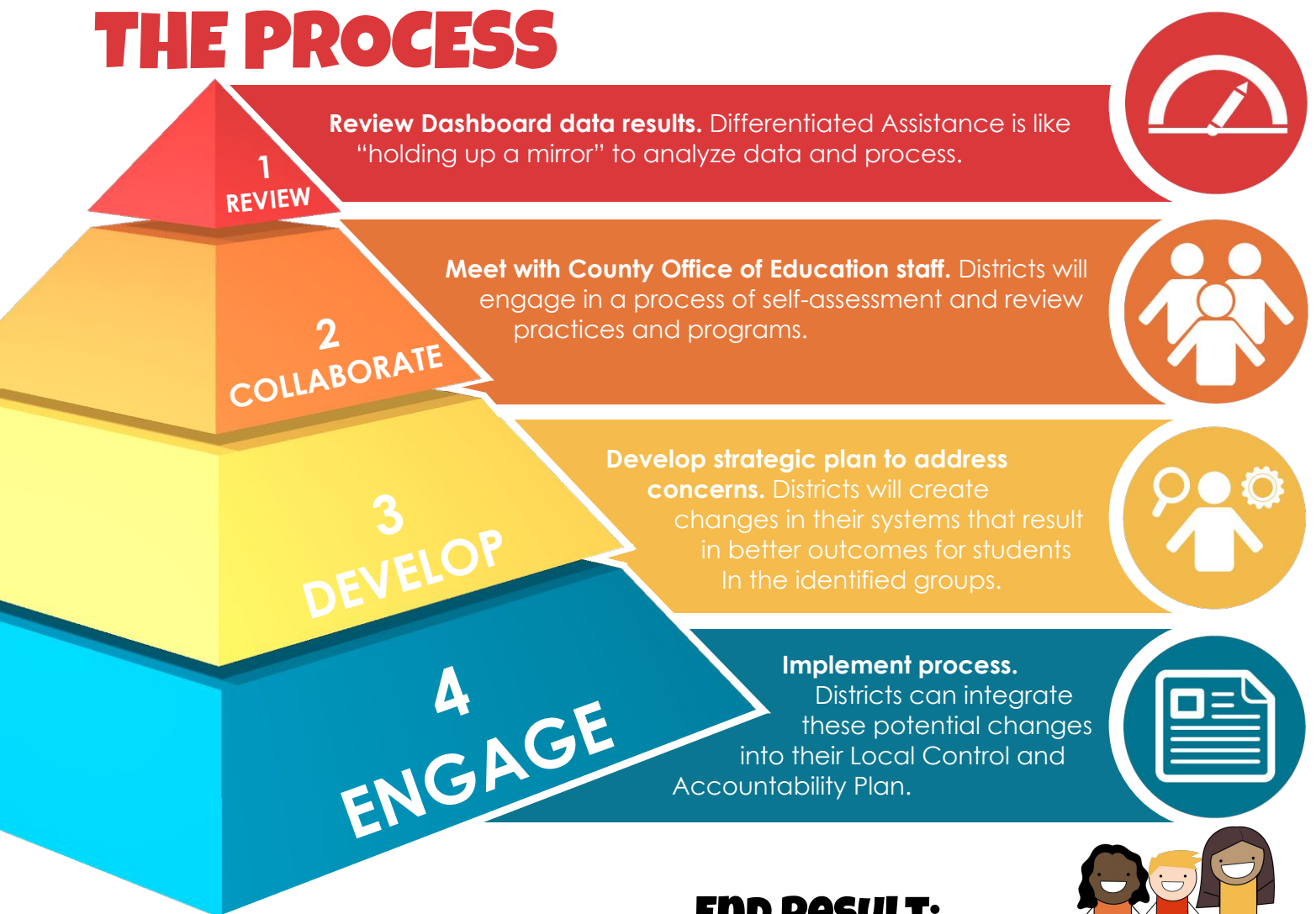
Differentiated Assistance is a **four-month** process. In partnership with the County Office of Education, the District identifies and resolves key challenges to better serve students most in need.

WHY DOES MY DISTRICT QUALIFY?



Districts that show **red** on two or more of the suspension rate, graduation rate, and academic indicators within the California School Dashboard qualify for Differentiated Assistance.

THE PROCESS



END RESULT:



Districts shall closely monitor student outcomes and engage in new practices, based on recommendations from the County Office, with the goal of achieving **improved and more equitable outcomes for all students!**



**ALAMEDA COUNTY
OFFICE OF EDUCATION**
L. Karen Monroe, Superintendent