

Illinois Veterans Home, Respiratory Outbreak, July-September 2015

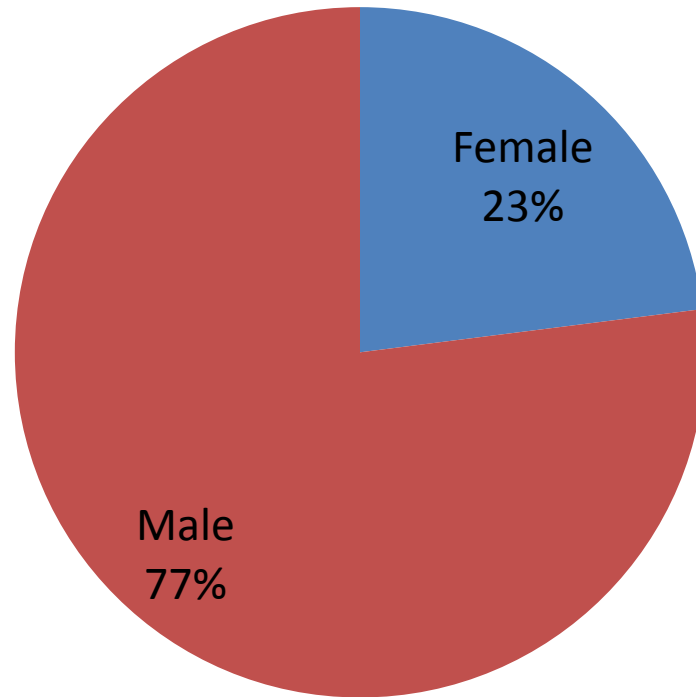
September 9

Legionella confirmed cases (N=53)

- Staff/residents
 - 5 staff and 48 residents
- Ages range from 49 to 98 (Median=86 years)
- Nine fatal cases (all residents)
 - 17% of cases
 - All over 75 years of age
 - Median age = 86
- Onsets ranged from July 24 through August 31

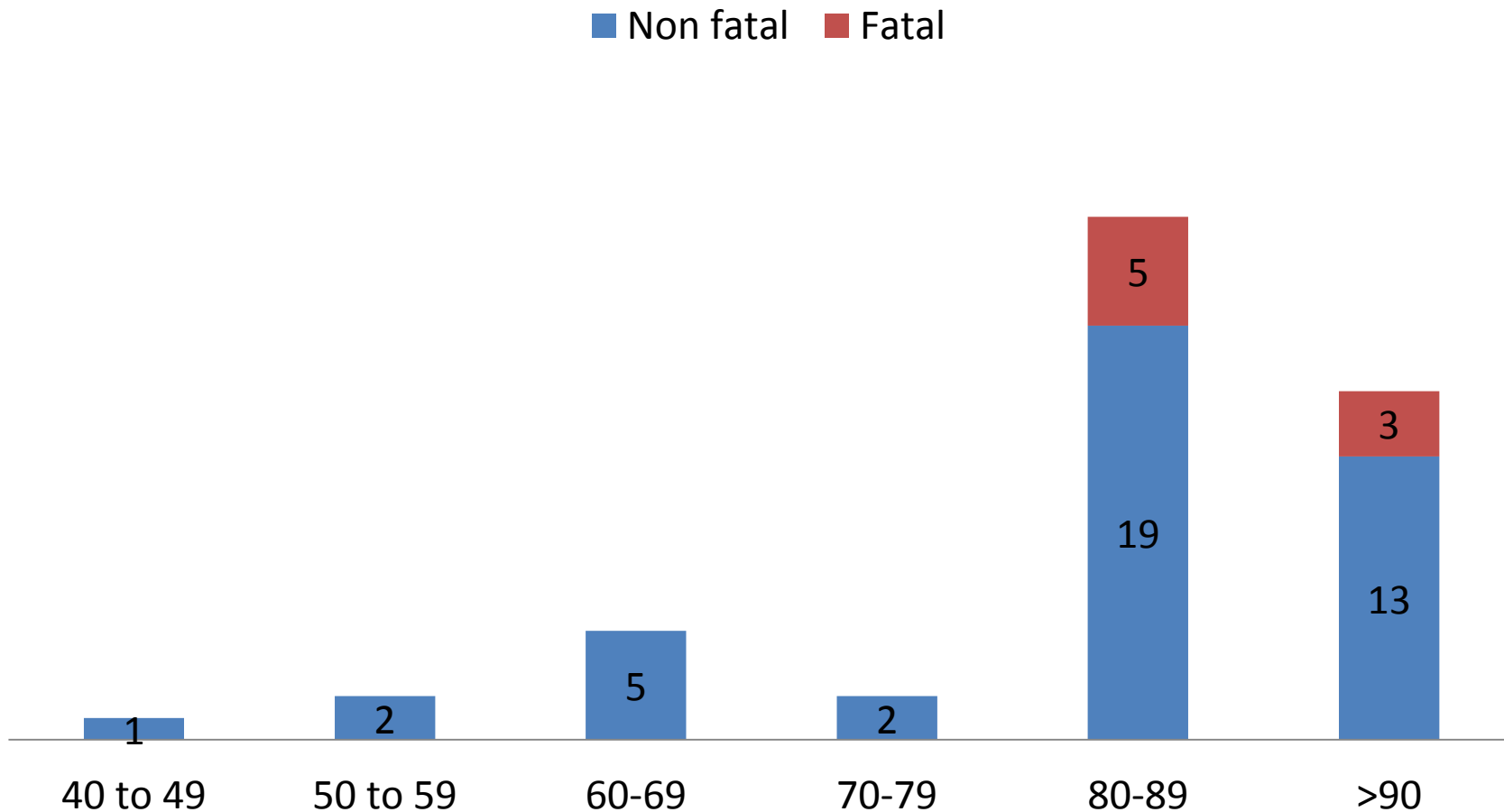
Sex Distribution of Cases

Sex

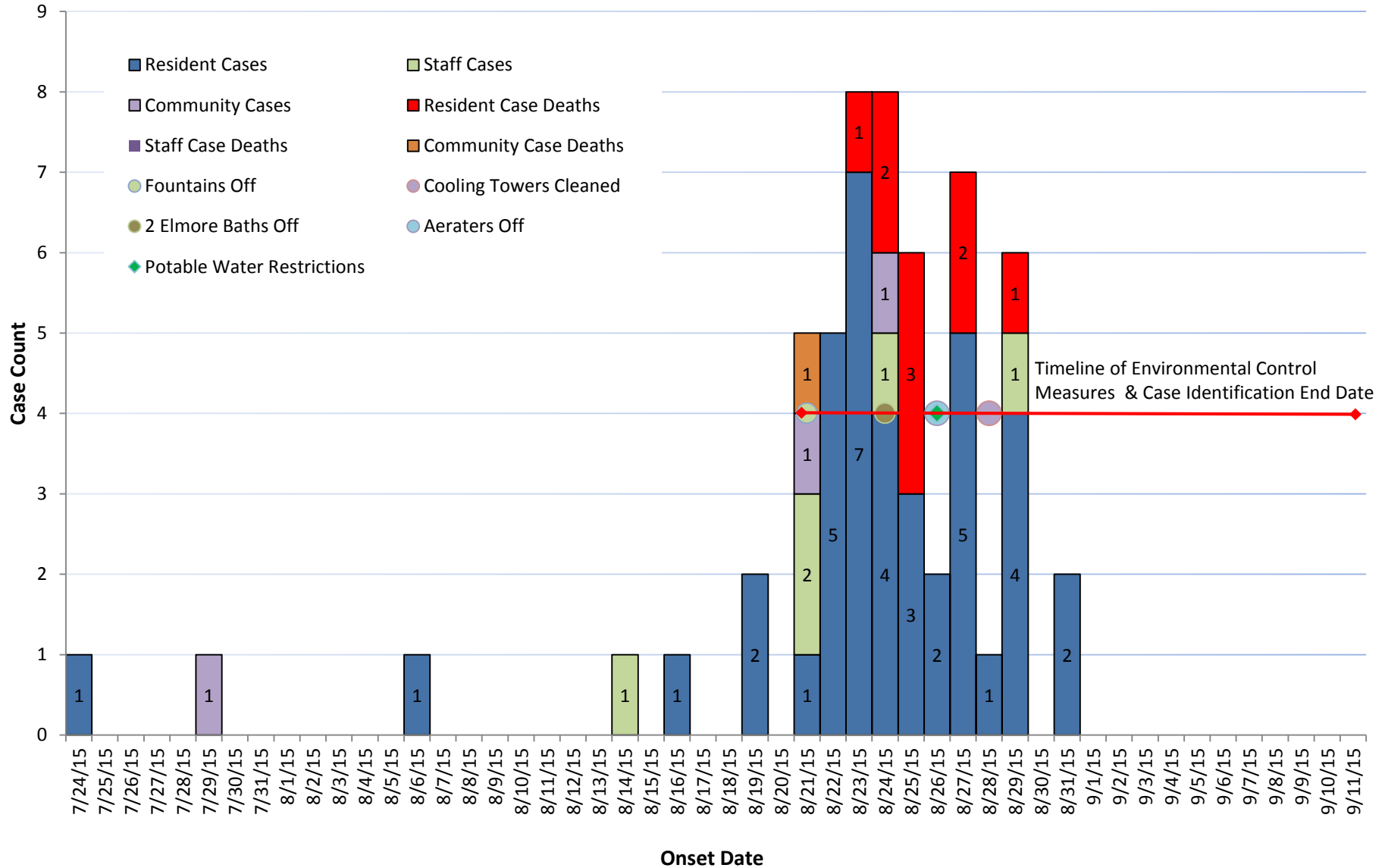


Age Distribution of Cases (N=53)

Note: Two cases are missing age



Legionella Outbreak Epi Curve, Quincy Illinois, 2015

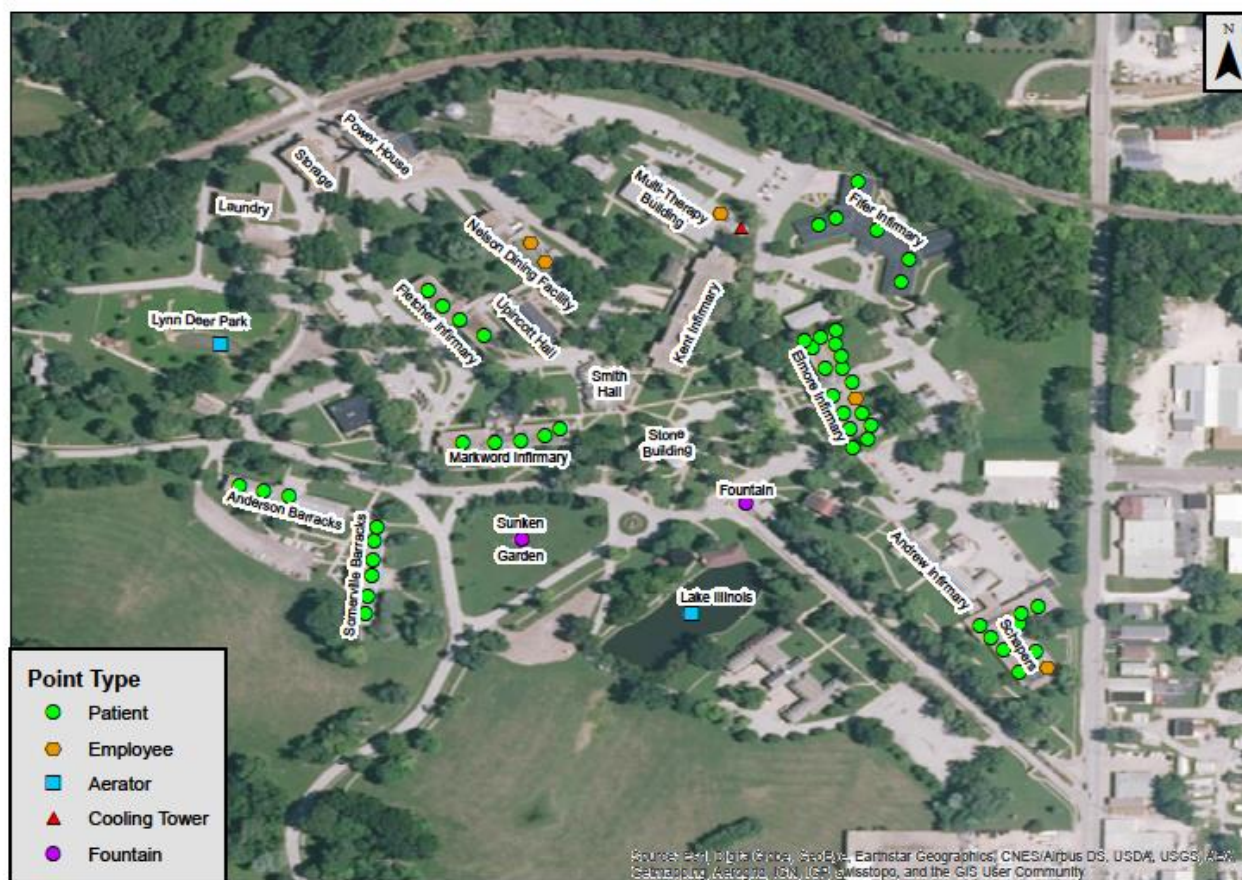


Current as of 9/9/2015 at 12:20pm

Location of Residence at IVH for those with Legionellosis, July-August 2015 (N=53)

FOR IDPH USE ONLY

Legionella Outbreak, IL Veterans Home, 2015



FOR IDPH USE ONLY

Community Case Residences (N=4)

