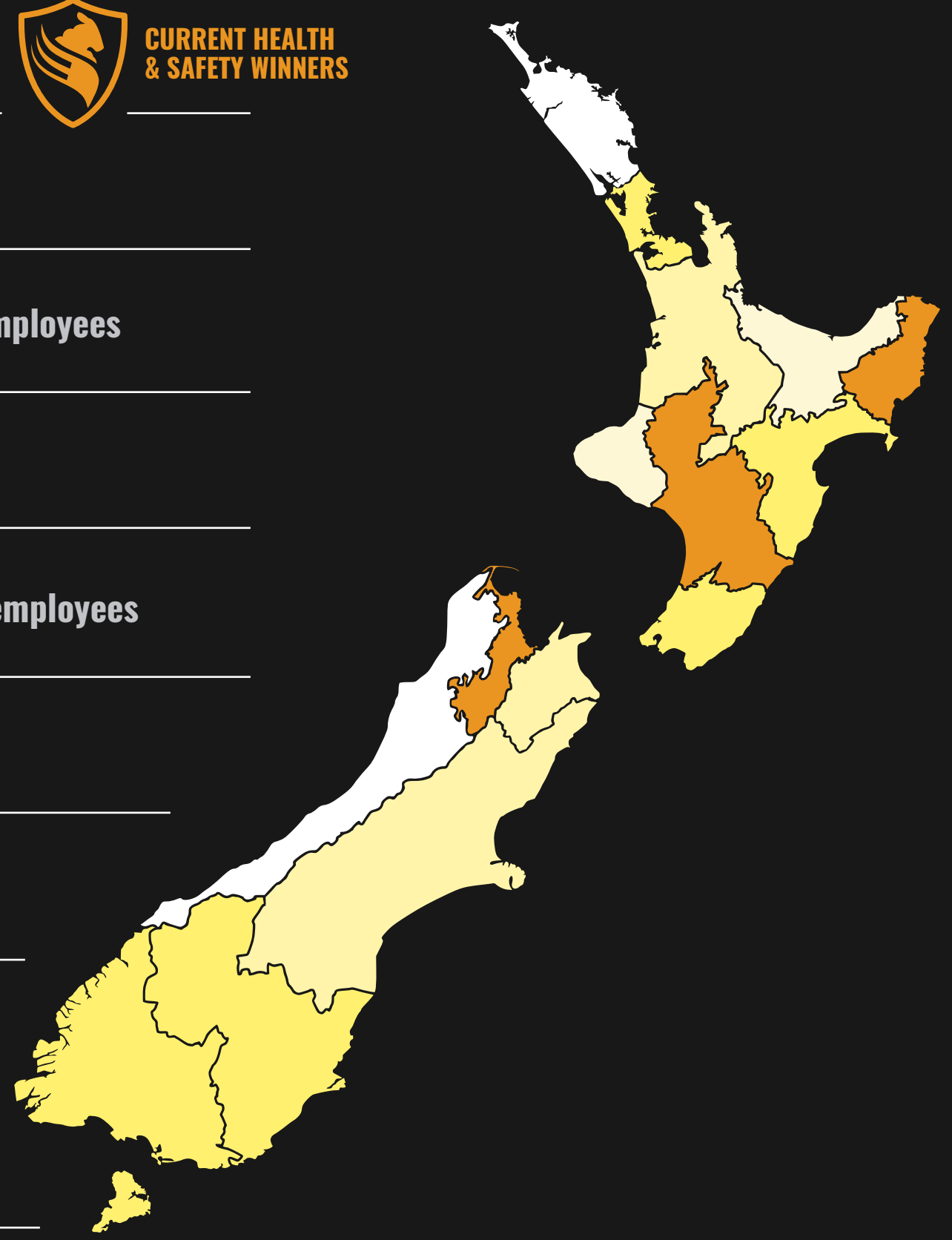


HEALTH & SAFETY PERFORMANCE

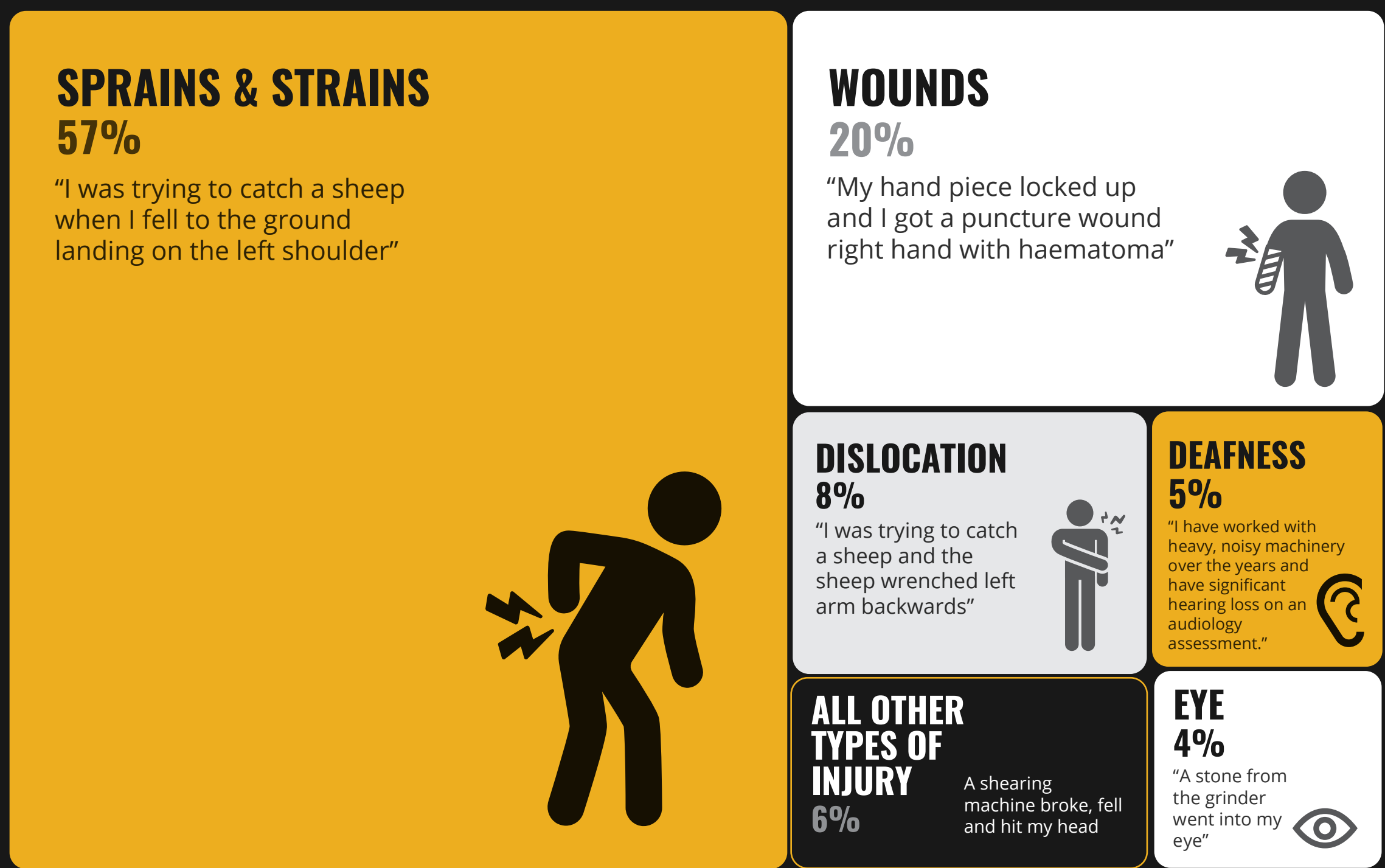
WOOL GROWERS LEADERBOARD 2017

- 1 **GISBORNE** 17 injuries per 100 employees
- 2 **TASMAN** 27 injuries per 100 employees
- 3 **MANAWATU-WHANGANUI** 29 injuries per 100 employees
- 4 **HAWKES BAY** 30 injuries per 100 employees
- 5 **WELLINGTON WAIRARAPA** 32 injuries per 100 employees
- 6 **OTAGO** 32 injuries per 100 employees
- 7 **SOUTHLAND** 36 injuries per 100 employees
- 8 **AUCKLAND** 37 injuries per 100 employees
- 9 **CANTERBURY** 41 injuries per 100 employees
- 10 **MARLBOROUGH** 42 injuries per 100 employees
- 11 **WAIKATO** 48 injuries per 100 employees
- 12 **TARANAKI** 59 injuries per 100 employees
- 13 **BAY OF PLENTY** 67 injuries per 100 employees
- 14 **NORTHLAND** 98 injuries per 100 employees
- 15 **NELSON** 189 injuries per 100 employees
- 16 **WEST COAST** 450 injuries per 100 employees



Number of employees and injuries were derived by NZStats (accessed 2018) and ACC Claims data (2017) respectively. ACC claims and NZ Stats data (2017) was used to compare injuries numbers to employee in each region. Regional location of employees is the regional location of the registered business address. Very low or volatile employee and injury numbers will distort results.

TYPES OF INJURIES IN WOOL GROWING



CAUSES OF INJURIES IN WOOL GROWING



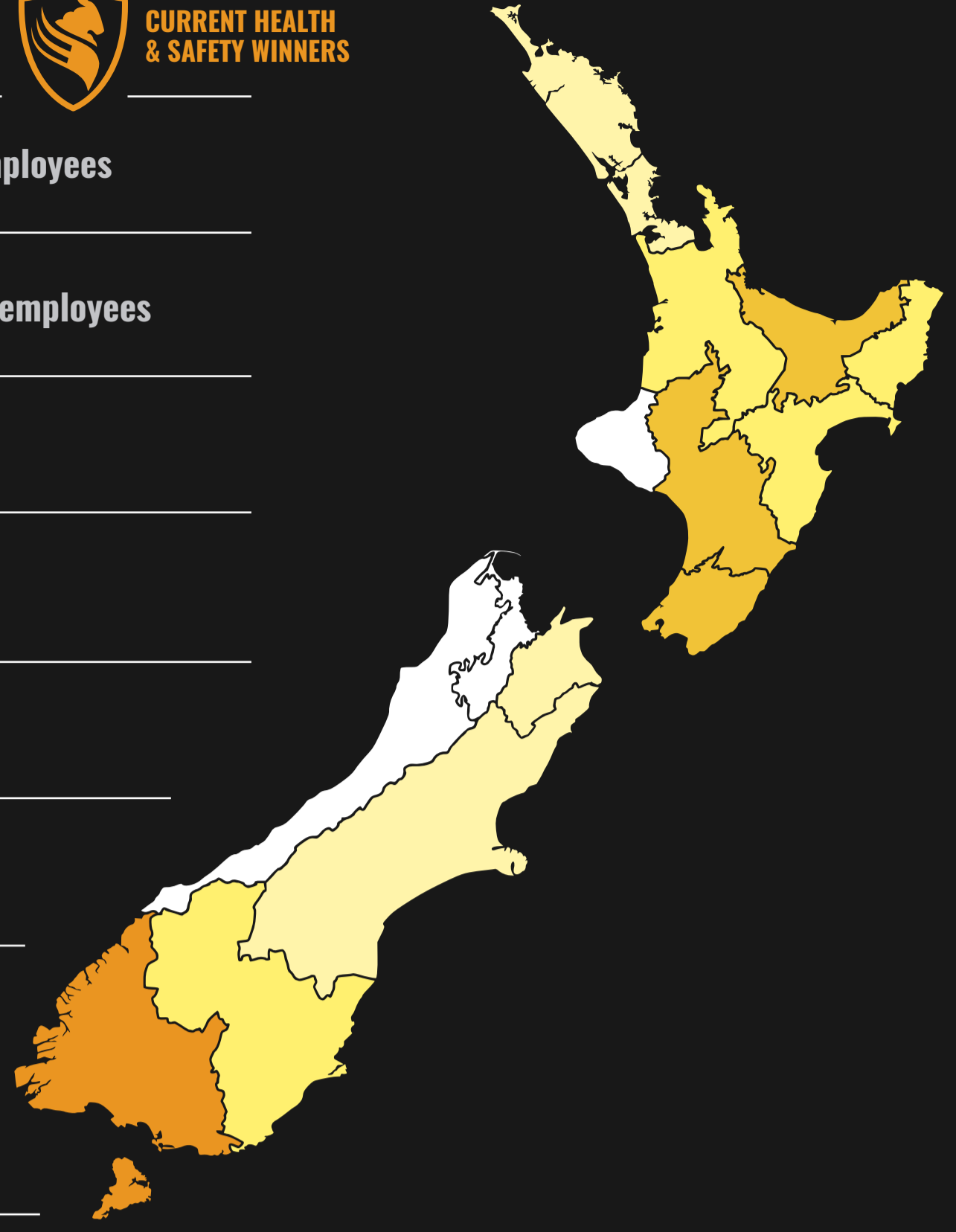
HEALTH & SAFETY PERFORMANCE

WOOL HARVESTING LEADERBOARD 2017

- 1 **SOUTHLAND** 10 injuries per 100 employees
- 2 **MANAWATU-WHANGANUI** 13 injuries per 100 employees
- 3 **WELLINGTON WAIRARAPA** 14 injuries per 100 employees
- 4 **BAY OF PLENTY** 15 injuries per 100 employees
- 5 **OTAGO** 15 injuries per 100 employees
- 6 **GISBORNE** 16 injuries per 100 employees
- 7 **WAIKATO** 18 injuries per 100 employees
- 8 **HAWKES BAY** 19 injuries per 100 employees
- 9 **CANTERBURY** 21 injuries per 100 employees
- 10 **MARLBOROUGH** 37 injuries per 100 employees
- 11 **NORTHLAND/AUCKLAND** 37 injuries per 100 employees
- 12 **TASMAN, WEST COAST & NELSON** 56 injuries per 100 employees
- 13 **TARANAKI** 62 injuries per 100 employees



CURRENT HEALTH & SAFETY WINNERS



Number of employees and injuries were derived by NZStats (accessed 2018) and ACC Claims data (2017) respectively. ACC claims and NZ Stats data (2017) was used to compare injuries numbers to employee in each region. Regional location of employees is the regional location of the registered business address. Very low or volatile employee and injury numbers will distort results.

TYPES OF INJURIES IN WOOL HARVESTING

SPRAINS & STRAINS 54%

"I sprained my left wrist while throwing fleeces in sheds"



WOUNDS 28%

"I was shearing when I caught my right leg with the handpiece"



DISLOCATION 4%

"Sheep twisted out to the left; I felt sharp pain in shoulder"



DEAFNESS 3%



EYE 1%



OTHER 10%

"I was pressing wool bales and developed pain and lump in right groin"

CAUSES OF INJURIES IN WOOL HARVESTING

5%



"Twisted arm awkwardly while shearing"

TWISTING MOVEMENT

SOMETHING COMING LOOSE 8%

"Part of the shearing machine fell 6ft and hit my back knocking me to the floor"



FALL 15%

"Keep the current description"



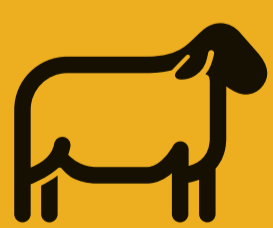
LIFTING AND CARRYING 16%

"I injured my back while lifting a sheep shearing"



STRUCK BY ANIMAL 17%

"I was trying to catch a sheep and fell on to ground landing on the left shoulder"



ALL OTHER CAUSES OF INJURY 39%

"My right hand and wrist aches after shearing"