



# Middle School Attendance Zoning Report

March 7, 2019

## PRESENTED BY:

Corey Ryan, Chief Communications Officer  
Jimmy Disler, Chief of Facilities and Operations





- Present community feedback from the ThoughtExchange survey on Scenario A.
- Present Scenario B.

## Purpose



“Upon recommendation from the Superintendent, the Board shall adopt changes in the attendance zones when such changes are necessary. Every attempt shall be made to authorize and publicize such changes so that parents and students have time to prepare.”

## Policy: FC (Local)





Schools	Capacity	2020	2021	2022	2023	2024	2025	2026	2027	2028
Canyon Ridge	1,358	1,180	1,167	1,105	1,027	945	940	931	941	927
Cedar Park	1,358	1,167	1,125	1,094	1,093	1,115	1,153	1,170	1,143	1,133
Four Points	1,208	717	725	723	693	706	716	751	742	738
Henry	1,358	1,427	1,417	1,416	1,428	1,415	1,422	1,433	1,437	1,426
Leander	1,050	1,257	1,343	1,420	1,483	1,522	1,584	1,669	1,733	1,795
Running Brushy	1,208	1,414	1,472	1,470	1,522	1,563	1,611	1,671	1,728	1,759
Stiles	1,358	1,647	1,695	1,820	1,896	2,031	2,076	2,178	2,195	2,242
Wiley	1,358	1,308	1,427	1,555	1,710	1,879	2,029	2,179	2,272	2,360

## Middle School Utilization Forecast

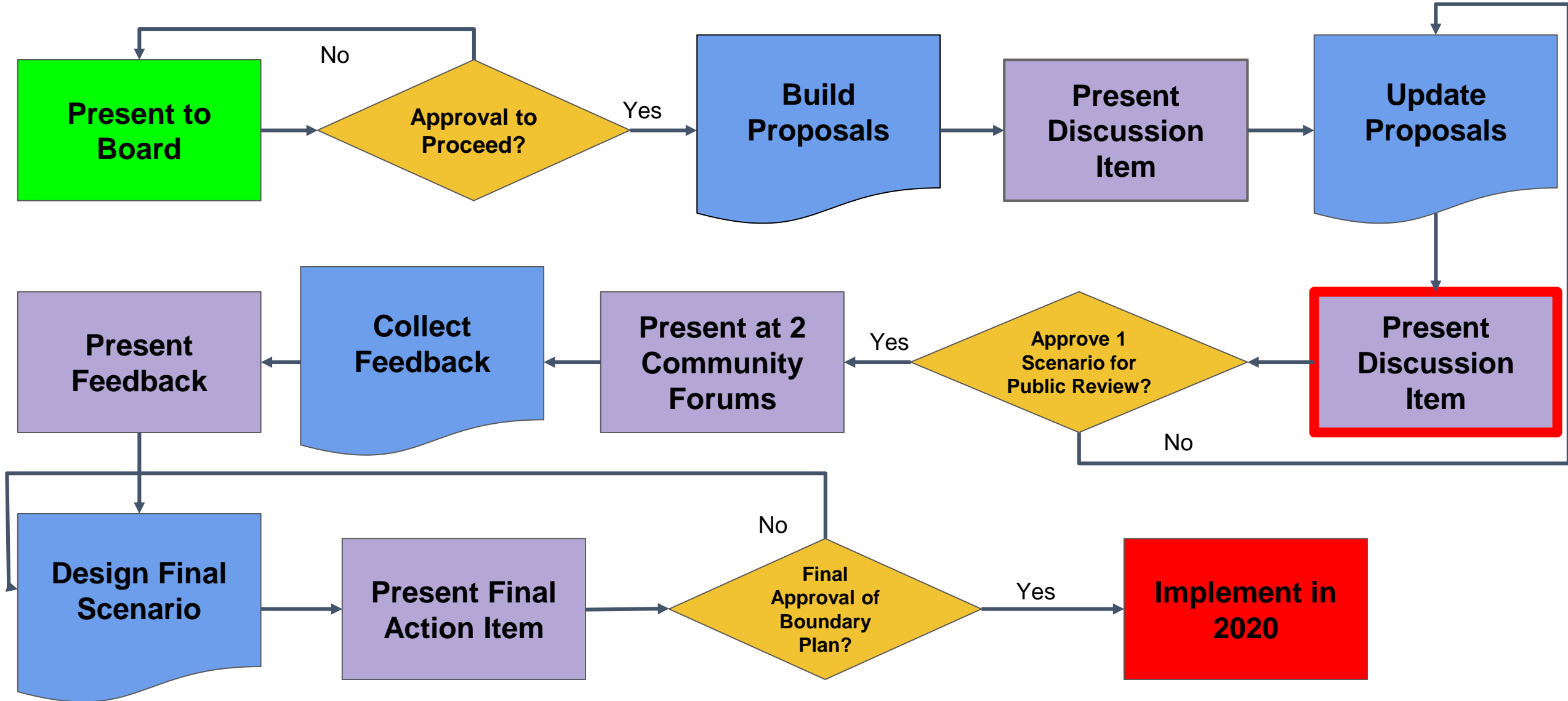
**SOURCE:** 2018 Demographic Update from PASA, does not include transfers  
 Indicates school at 120% utilization or higher (enrollment/capacity).

School	Feeder	Feeder	Feeder
Cedar Park High School	100% of Cedar Park Middle School (423 students)	13% of Running Brushy Middle School (59 students)	13% of Henry Middle School (64 students)
Glenn High School	65% of Leander Middle School	52% of Wiley Middle School	
Leander High School	87% of Running Brushy Middle School	35% of Leander Middle School	
Rouse High School	59% of Stiles Middle School	48% of Wiley Middle School	
Vandegrift High School	100% of Four Points Middle School	100% of Canyon Ridge Middle School	
Vista Ridge High School	41% of Stiles Middle School	87% of Henry Middle School	

### Neighborhood Codes of Note:

- NBCD 2075 and 2200 are Henry Middle School to Cedar Park High School
- NBCD 3100, 3200, 3300, 3400 are Running Brushy Middle School to Cedar Park High School

# Current Middle to High School Feeder Patterns\*



# Attendance Zoning Board Review Process

<b>Jan 10, 2019</b>	<ul style="list-style-type: none"> <li>• Present Process and Timeline</li> <li>• Gain Board Input for Characteristics of Success</li> </ul>
<b>Jan 25 - Feb 3, 2019</b>	<ul style="list-style-type: none"> <li>• Collect Community Input</li> </ul>
<b>Feb 7, 2019</b>	<ul style="list-style-type: none"> <li>• Present Community Input to Board</li> </ul>
<b>Feb 11-17, 2019</b>	<ul style="list-style-type: none"> <li>• Collect Community Input</li> </ul>
<b>Feb 21, 2019</b>	<ul style="list-style-type: none"> <li>• Present additional Community Input</li> <li>• Discussion and Input on Scenarios</li> </ul>
<b>Feb 22 - March 3, 2019</b>	<ul style="list-style-type: none"> <li>• Collect Community Input</li> </ul>
<b>March 7, 2019</b>	<ul style="list-style-type: none"> <li>• Discussion and Input on Scenarios</li> <li>• Action to Approve Scenario for Public Feedback</li> </ul>
<b>March 8 - March 29, 2019</b>	<ul style="list-style-type: none"> <li>• Host Minimum of 2 Public Forums</li> <li>• Record Feedback</li> </ul>
<b>April 4, 2019</b>	<ul style="list-style-type: none"> <li>• Discussion of Feedback</li> <li>• Board Input for Adjustments</li> </ul>
<b>April 18, 2019</b>	<ul style="list-style-type: none"> <li>• Discussion of Final Proposal</li> </ul>
<b>May 2, 2019</b>	<ul style="list-style-type: none"> <li>• Action and Approval</li> </ul>

# Proposed Timeline

The Board charged administration with collecting community feedback on Scenario A.

## Community Feedback

### THOUGHT EXCHANGE PROMPT

What are your thoughts and questions regarding Scenario A?



**Scenario A** provides the following outcomes:

- Provides relief for **Stiles Middle School** and **Leander Middle School**
- Moves **Wiley Middle School** students zoned to Glenn HS to **Danielson Middle School**
- Eliminates small cohorts in middle school to high school feeder patterns of **Running Brushy Middle School** to Cedar Park High School & **Henry Middle School** to Cedar Park High School
- Raises the **Cedar Park Middle School** enrollment to 1,500+ students
- No changes to the attendance zones of **Canyon Ridge Middle School** and **Four Points Middle School**

## Overview

1) Thoughts


2) Ratings

3) Transparency

# ThoughtExchange Overview


 1029  
Participants

 974  
Thoughts

 47055  
Ratings

  
546  
Participants shared  
thoughts



  
607  
Participants rated  
thoughts



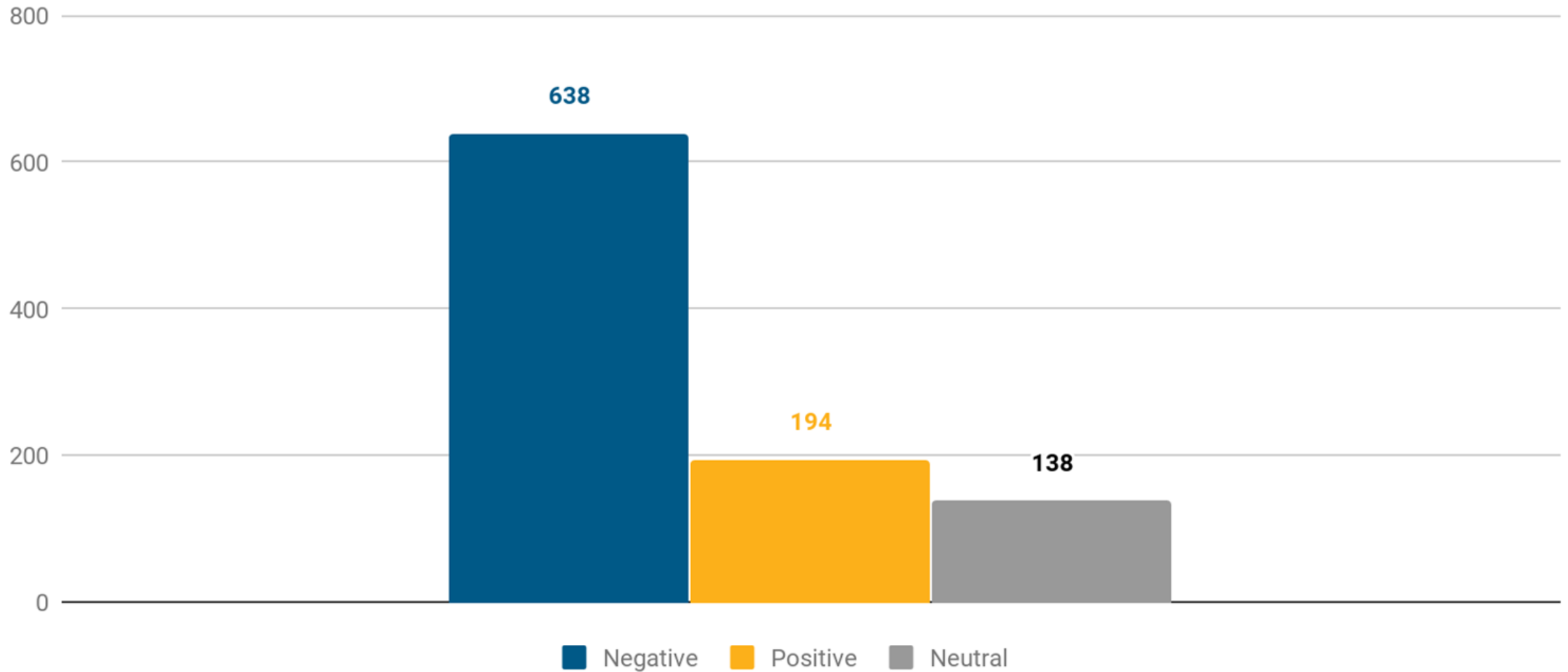
  
652  
Participants explored  
thoughts



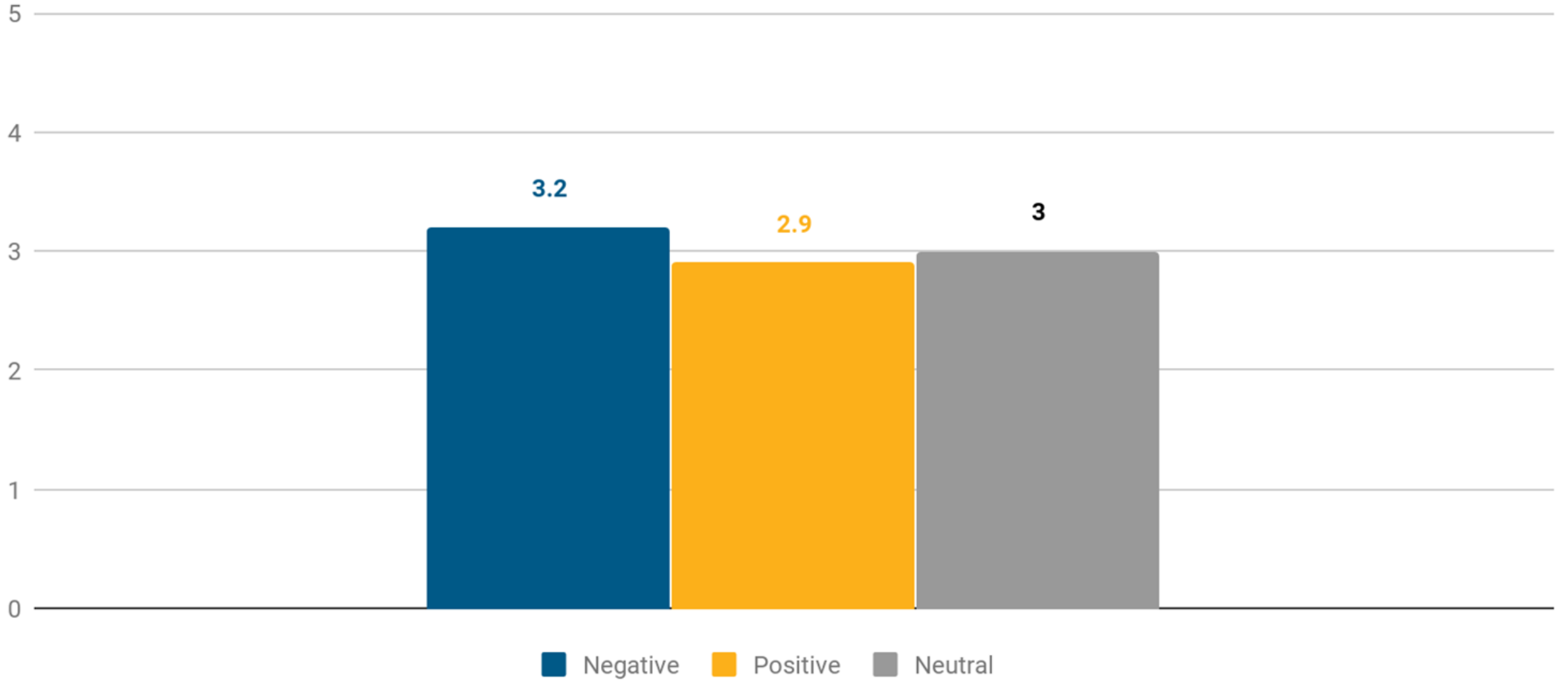
<b>Stiles</b>	450
<b>Cedar Park</b>	141
<b>Henry</b>	104
<b>Wiley</b>	61
<b>Running Brushy</b>	53
<b>Leander</b>	42
<b>Canyon Ridge</b>	11
<b>Four Points</b>	8
<b>Community &amp; Other</b>	43

## ThoughtExchange Participation by School

“ As we look to understand the schools students will attend across their education, please select which middle school you most closely identify with. ”







- 1) I think it's important to keep as many students from a single middle school going to the same high school. Maintaining friendships and parental community. *(Rating: 4.1/5.0)*
- 2) Middle school zoning should not separate kids going to same elementary school. It's important to keep kids together from same elementary. *(Rating: 4.1/5.0)*
- 3) I think it is important for middle school student to attend high school together. UIL team sports are established and relationships are built. *(Rating: 4.0/5.0)*
- 4) We are zoned for Stiles, which is across the current elementary school my child attends. **Rezoning to a different MS does not make sense.** We live literally 2 mins away. We can see both schools from our home. We are not in favor of this suggested new zone for MS. *(Rating: 4.0/5.0)*
- 5) **Reagan ES should feed in Henry MS.** It's closer. They will go to VRHS. Keep kids together throughout school. It makes the most sense based on Ranch at Brushy Creek neighborhood. *(Rating: 4.0/5.0)*
- 6) **FSMS has too many students and this doesn't change that.** Schools that are too big are problematic in many ways: harder to do sports and extracurriculars, harder on staff to teach and manage students. *(Rating: 4.0/5.0)*

## Top Thoughts - 4.0 Rating & Above

- **NBCDs against rezoning from Stiles MS to Wiley MS**

*309 thoughts | 3.1 Rating*

- 1675/Cold Springs & 1680/Hazelwood (Akin Elementary)

*86 thoughts | 3.0 rating*

- 1245/Sarita Valley (Parkside Elementary)

*67 thoughts | 3.1 rating*

- **Cedar Park MS Overcrowding**

*152 thoughts | 3.3 Rating*

- **Feeder Patterns**

- Focus on Elementary to Middle School

*162 thoughts | 3.1 rating*

- Focus on Middle School to High School

*68 thoughts | 3.1 rating*

- **Avery Ranch**

- Move to Henry MS

*48 thoughts | 3.4 rating*

- Stay at Stiles MS

*13 thoughts | 2.4 rating*

- **Transfer Policy**

*49 thoughts | 3.2 rating*

## Trending Topics

**1) We are zoned for Stiles, which is across the current elementary school my child attends.** We live literally 2 mins away. We can see both schools from our home. We are not in favor of this suggested new zone for MS. *(Rating: 4.0/5.0)*

**2) I am shocked that the MS right next to our elementary school would not be the MS our children would go to.** We moved here specifically to go to the 3 schools in the area – brand new Akin, Stiles, Rouse. I have 3 children and we are in the process. *(Rating: 3.9/5.0)*

**3) Stiles should remained zoned for my zone.** It's distance is appropriate for my community. *(Rating: 3.8/5.0)*

## Trending Topics – Top Thoughts



- 1) **Do not move Hazelwood kids from a school across the street while busing Avery Ranch past Henry MS.** Our kids get to know other children from the surrounding area in elementary school at Akin, be separated for middle school, and back together in HS *(Rating: 3.8/5.0)*
- 2) **Hazelwood neighborhood needs to stay at Stiles MS. Do not rezone Hazelwood.** Same kids staying in with each other from elementary thru high school. Reason for buying home in Hazelwood was Stiles MS. Property values.  
*(Rating: 3.7/5.0)*
- 3) **According to me, we should not move Hazelwood community to another school. We need to have same Stiles school. Please do not change school.** Since the last 5 year history, our community elementary school keeps changing. Changing schools affects kids.  
*(Rating: 3.7/5.0)*

## Trending Topics – Top Thoughts

- 1) We want the kids from Sarita Valley to stay at Stiles MS. We do not want the kids to be separated. *(Rating: 3.6/5.0)*
- 2) We have planned and purchased our homes because Sarita Valley comes under Stiles. Our kids will miss their friends, and the property value goes down. *(Rating: 3.5/5.0)*
- 3) Avery Ranch shouldn't be going to Stiles. We live closer to Stiles than they do. Sarita Valley is closer and should be going to Stiles. I want my kids to be with kids they have been growing up, kids of same academic level. *(Rating: 3.4/5.0)*

## Trending Topics – Top Thoughts

- 1) **There will be schools in the district well over maximum capacity while other will be far below maximum capacity.** CPMS will be well over maximum with little to no relief in the future, whereas schools like Canyon Ridge and Four Points are well under max. *(Rating: 3.9/5.0)*
- 2) **A better solution would be to spread out the overflow of students to other middle schools besides CPMS, such as Four Points MS or Running Brushy MS.** It is not equitable to have one school (i.e. CPMS) have to solely shoulder the over-crowding burden. *(Rating: 3.9/5.0)*
- 3) **CPMS capacity should not increase beyond current limit of 1350.** Increasing capacity will put too much stress on the resources of CPMS. *(Rating: 3.9/5.0)*

## Trending Topics – Top Thoughts

- 1) **Middle school zoning should not separate kids going to same elementary school.** It's important to keep kids together from same elementary. *(Rating: 4.1/5.0)*
- 2) **Reagan ES should feed into Henry MS.** It's closer. They will go to Vista Ridge. Keeps kids together throughout school. It makes the most sense based on Ranch at Brushy Creek neighborhood. *(Rating: 4.0/5.0)*
- 3) **It's important for kids to have a foundation including familiar faces when starting middle school.** Middle school can be rough. Friends are important. *(Rating: 3.9/5.0)*

## Trending Topics – Top Thoughts



- 1) I think it's important to keep as many students from a single middle school going to the same high school.**

Maintaining friendships and parental community. *(Rating: 4.1/5.0)*

- 2) I think it's important for middle school students to attend high school together.**

UIL team sports are established and relationships are built.

*(Rating: 4.0/5.0)*

- 3) Allowing the same group of kids from middle to high school together is great.**  
Thank you for listening to our feedback.  
*(Rating: 3.9/5.0)*

## Trending Topics – Top Thoughts

**1) Reducing Bus Time and Cost.** Busing Avery Ranch to Stiles is not fiscally responsible, and the kids spend two hours a day on the bus when Henry is much closer.  
*(Rating: 3.9/5.0)*

**2) Why don't the Avery Ranch kiddos stay at Henry instead?** Their proximity to Henry Middle School is so much closer than to Stiles.  
*(Rating: 3.9/5.0)*

**3) Ridiculous to bus Avery Ranch 8 miles.** I want to see numbers regarding transportation costs. How do you justify this? It is our money you will be wasting.  
*(Rating: 3.8/5.0)*

## Trending Topics – Top Thoughts

- 1) I don't want my student having to change schools in their last year (8th) of MS. Should be able to complete where they started. (Rating: 3.9/5.0)**
- 2) A student that begins a school as zoned should be able to finish their schooling in that zone, with all school services provided (i.e. busing) Supports developing positive relationships with peers, faculty, leading to greater involvement, participation, community and learning. (Rating: 3.9/5.0)**
- 3) Middle school is hard enough. If a child starts at one, he/she should not be forced to change. At a minimum, it should be an option. (Rating: 3.7/5.0)**

## Trending Topics – Top Thoughts

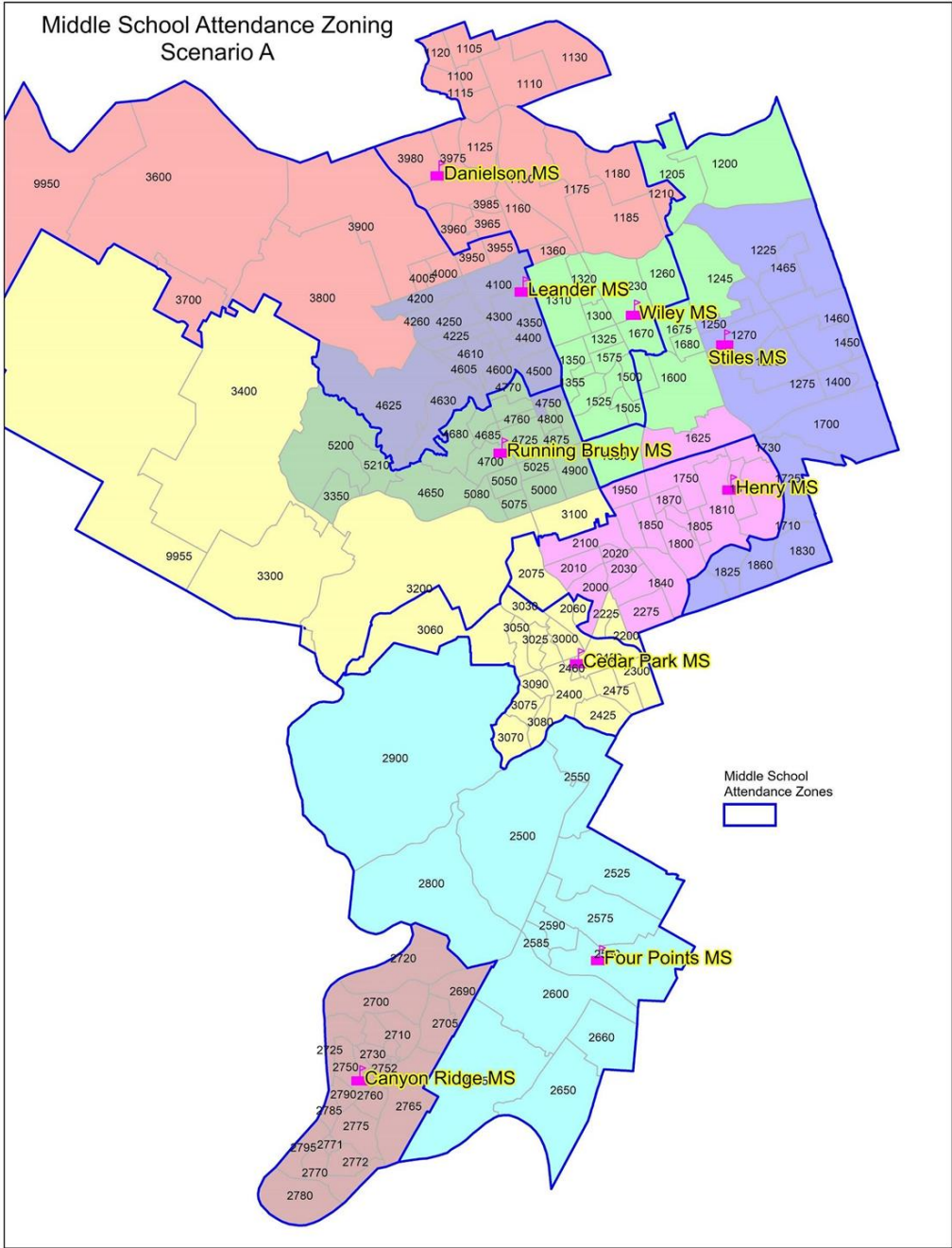
# Scenario Discussion





Campus Totals						MS10 Opens
	Fnc.Cap	20-21	21-22	22-23	23-24	24-25
CPMS	1358	1517	1496	1451	1485	
CRMS	1358	1180	1167	1105	1027	
DMS	1358	994	1138	1271	1434	
FPMS	1208	717	724	722	692	
FSMS	1358	1293	1336	1405	1458	
HMS	1358	1284	1282	1279	1272	
LMS	1050	995	1057	1111	1133	
RBMS	1208	1165	1189	1205	1238	
WMS	1358	971	980	1052	1111	

\*Data does not include transfers.



### NBCDs that Move

NBCD	From	To	# Students	NBCD	From	To	# Students
1100	WMS	DMS	63	2200	HMS	CPMS	28
1105	WMS	DMS	86	2225	HMS	CPMS	0
1110	WMS	DMS	93	3100	RBMS	CPMS	47
1115	WMS	DMS	31	3200	RBMS	CPMS	43
1120	WMS	DMS	0	3300	RBMS	CPMS	47
1125	WMS	DMS	12	3400	RBMS	CPMS	65
1130	WMS	DMS	27	3600	LMS	DMS	66
1150	WMS	DMS	45	3700	LMS	DMS	28
1160	WMS	DMS	10	3800	LMS	DMS	13
1175	WMS	DMS	31	3900	LMS	DMS	16
1180	WMS	DMS	55	3950	LMS	DMS	73
1185	WMS	DMS	7	3955	LMS	DMS	27
1200	FSMS	WMS	26	3960	WMS	DMS	65
1205	FSMS	WMS	26	3965	WMS	DMS	23
1210	WMS	DMS	0	3970	WMS	DMS	34
1245	FSMS	WMS	57	3975	WMS	DMS	68
1360	WMS	DMS	1	3980	WMS	DMS	18
1600	FSMS	WMS	24	3985	WMS	DMS	16
1625	FSMS	HMS	6	4000	LMS	DMS	77
1650	FSMS	WMS	80	4005	LMS	DMS	9
1655	FSMS	WMS	8	4750	RBMS	LMS	47
1675	FSMS	WMS	60	9950	LMS	DMS	0
1680	FSMS	WMS	67	9955	LMS	CPMS	0
2075	HMS	CPMS	121				

### Middle School to High School Percentages based on Scenario A

Campus	_#Students	Percent	HS
CPMS	1517	100%	CPHS
CRMS	1180	100%	VHS
DMS	994	100%	GHS
FPMS	717	100%	VHS
FSMS	1293	48%/52%	RHS/VRHS
HMS	1284	100%	VRHS
LMS	995	49%/51%	GHS/LHS
RBMS	1165	100%	LHS
WMS	971	100%	RHS

## Scenario B provides the following outcomes:

- Provides relief for **Stiles MS** and **Leander MS**
- Moves **Wiley MS** students zoned for Glenn HS to **Danielson MS**
- **Stiles MS** considerations:
  - Uses Ronald Reagan Blvd. as natural barrier
  - NBCDs 1200, 1205, 1245 remain at **Stiles MS**
- **Running Brushy MS** considerations:
  - NBCD 4750 remains at **Running Brushy MS** for proximity
  - NBCD 4770 rezoned to **Leander MS** for **Running Brushy MS** relief
  - NBCDs 3100, 3200, 3300, 3400, 9955 remain at **Running Brushy MS** and are **rezoned** to **Leander HS\***
- **Cedar Park MS** considerations:
  - Eliminates overcrowding presented in Scenario A
- **Cedar Park HS** projected enrollment decreases while **Leander HS** projected enrollment increases

## Scenario B Overview

Campus Totals						MS10 Opens
	Fnc.Cap.	20-21	21-22	22-23	23-24	24-25
CPMS	1358	1315	1261	1234	1250	
CRMS	1358	1180	1167	1105	1027	
DMS	1358	994	1138	1271	1434	
FPMS	1208	717	724	722	692	
FSMS	1358	1402	1459	1558	1634	
HMS	1358	1284	1282	1279	1272	
LMS	1050	979	1041	1088	1107	
RBMS	1208	1383	1440	1445	1499	
WMS	1358	862	857	899	935	

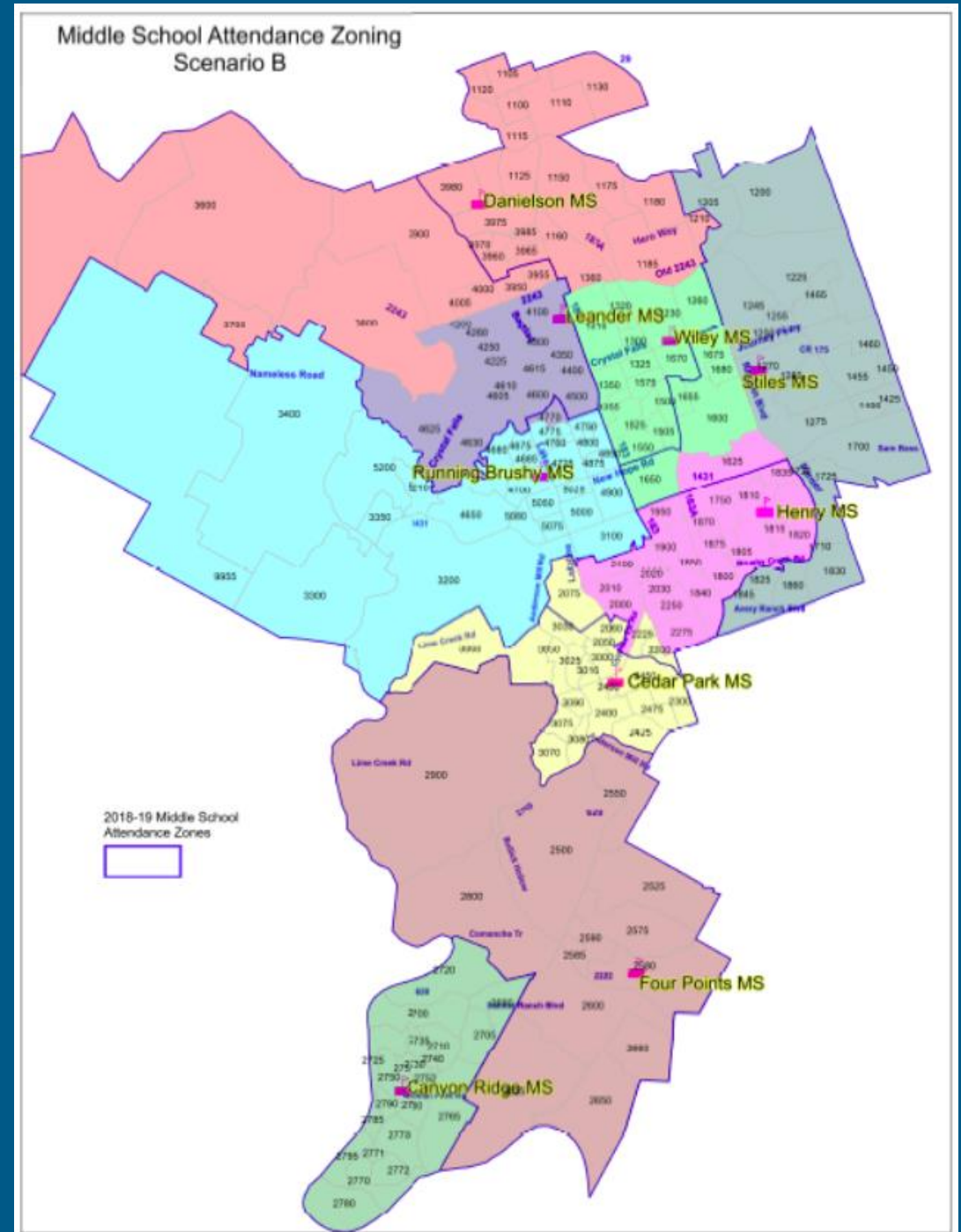
Indicates where functional capacity is 120% or greater

#### Middle School to High School Percentages based on Scenario B

Campus	#Stu	%	To HS
CPMS	1315	100%	CPHS
CRMS	1180	100%	VHS
DMS	994	100%	GHS
FPMS	717	100%	VHS
FSMS	1402	52%/48%	RHS/VRHS
HMS	1284	100%	VRHS
LMS	979	49%/51%	GHS/LHS
RBMS	1383	*100%	LHS
WMS	862	100%	RHS

\* 3100/3200/3300/3400/9955  
would be rezoned from CPHS to LHS

\*Data  
does not  
include  
transfers.





NBCDs that Move							
NBCD	From	To	#Students	NBCD	From	To	#Students
1100	WMS	DMS	63	2075	HMS	CPMS	121
1105	WMS	DMS	86	2200	HMS	CPMS	28
1110	WMS	DMS	93	2225	HMS	CPMS	0
1115	WMS	DMS	31	3600	LMS	DMS	66
1120	WMS	DMS	0	3700	LMS	DMS	28
1125	WMS	DMS	12	3800	LMS	DMS	13
1130	WMS	DMS	27	3900	LMS	DMS	16
1150	WMS	DMS	45	3950	LMS	DMS	73
1160	WMS	DMS	10	3955	LMS	DMS	27
1175	WMS	DMS	31	3960	WMS	DMS	65
1180	WMS	DMS	55	3965	WMS	DMS	23
1185	WMS	DMS	7	3970	WMS	DMS	34
1210	WMS	DMS	0	3975	WMS	DMS	68
1360	WMS	DMS	1	3980	WMS	DMS	18
1600	FSMS	WMS	24	3985	WMS	DMS	16
1625	FSMS	HMS	6	4000	LMS	DMS	77
1650	FSMS	WMS	80	4005	LMS	DMS	9
1655	FSMS	WMS	8	4770	RBMS	LMS	31
1675	FSMS	WMS	60	9950	LMS	DMS	0
1680	FSMS	WMS	67	9955	LMS	RBMS	0

#### Before the 3000 Group moves to LHS, zoned for CPHS

##### Projection Numbers

Campus	Fnc. Cap	21-22	22-23	23-24	HS 7 Opens 24-25
CPHS	2400	2186	2144	2115	
GHS	2400	2384	2678	2851	
LHS	2400	2254	2382	2502	
RHS	2400	1994	2123	2358	
VHS	2400	2795	2733	2693	
VRHS	2400	2599	2718	2753	

#### After 3000 Group is rezoned to LHS

##### Projection Numbers

Campus	Fnc. Cap	21-22	22-23	23-24	HS 7 Opens 24-25
CPHS	2400	1923	1849	1815	
GHS	2400	2384	2678	2851	
LHS	2400	2517	2677	2802	
RHS	2400	1994	2123	2358	
VHS	2400	2795	2733	2693	
VRHS	2400	2599	2718	2753	

LHS increase by 257 students, CPHS goes down by 257

**3000 group= 3100, 3200, 3300, 3400, 9955**

# DISCUSSION

Details at: [www.leanderisd.org/msaz](http://www.leanderisd.org/msaz)

