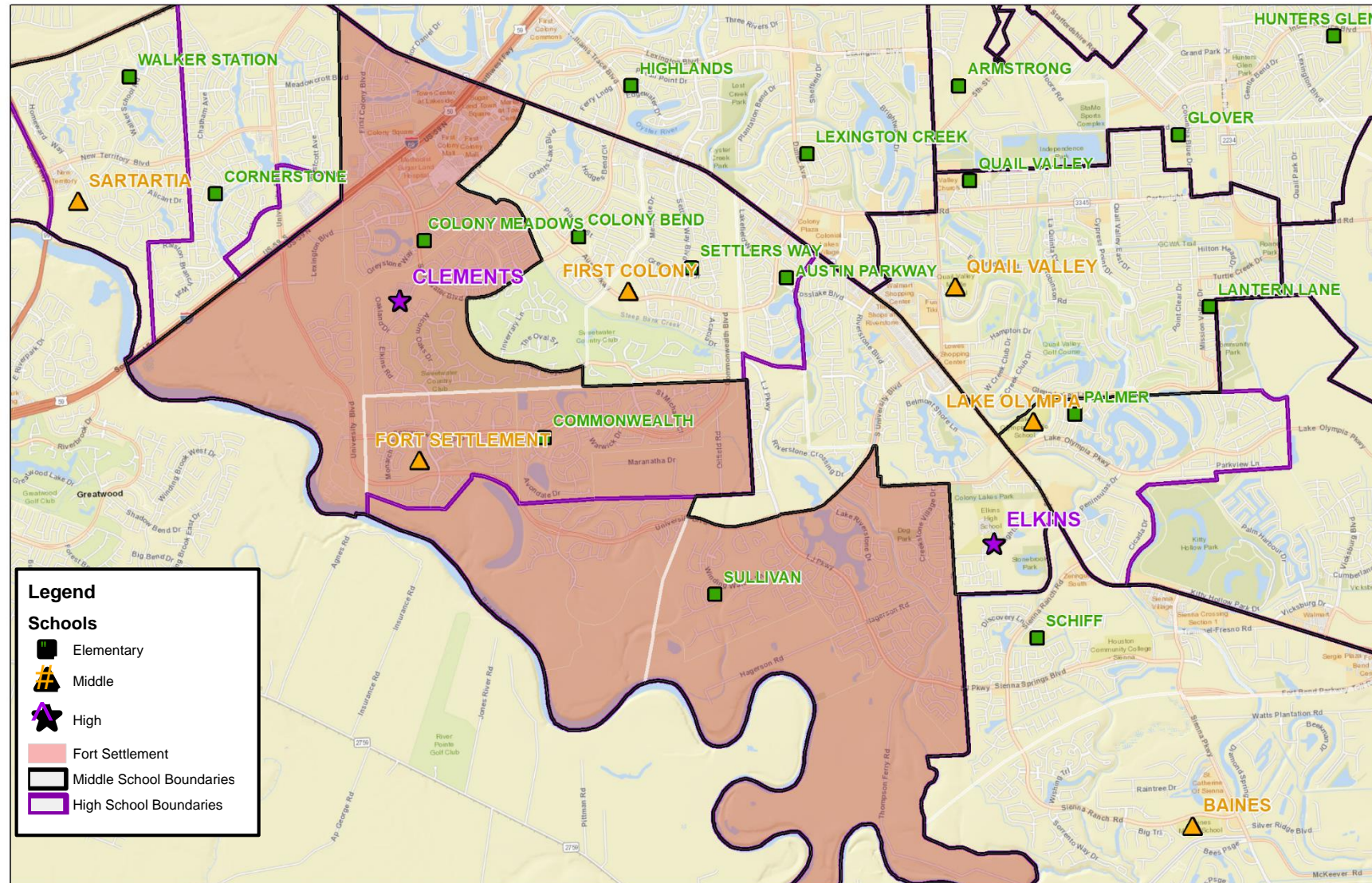


# FORT SETTLEMENT MIDDLE SCHOOL

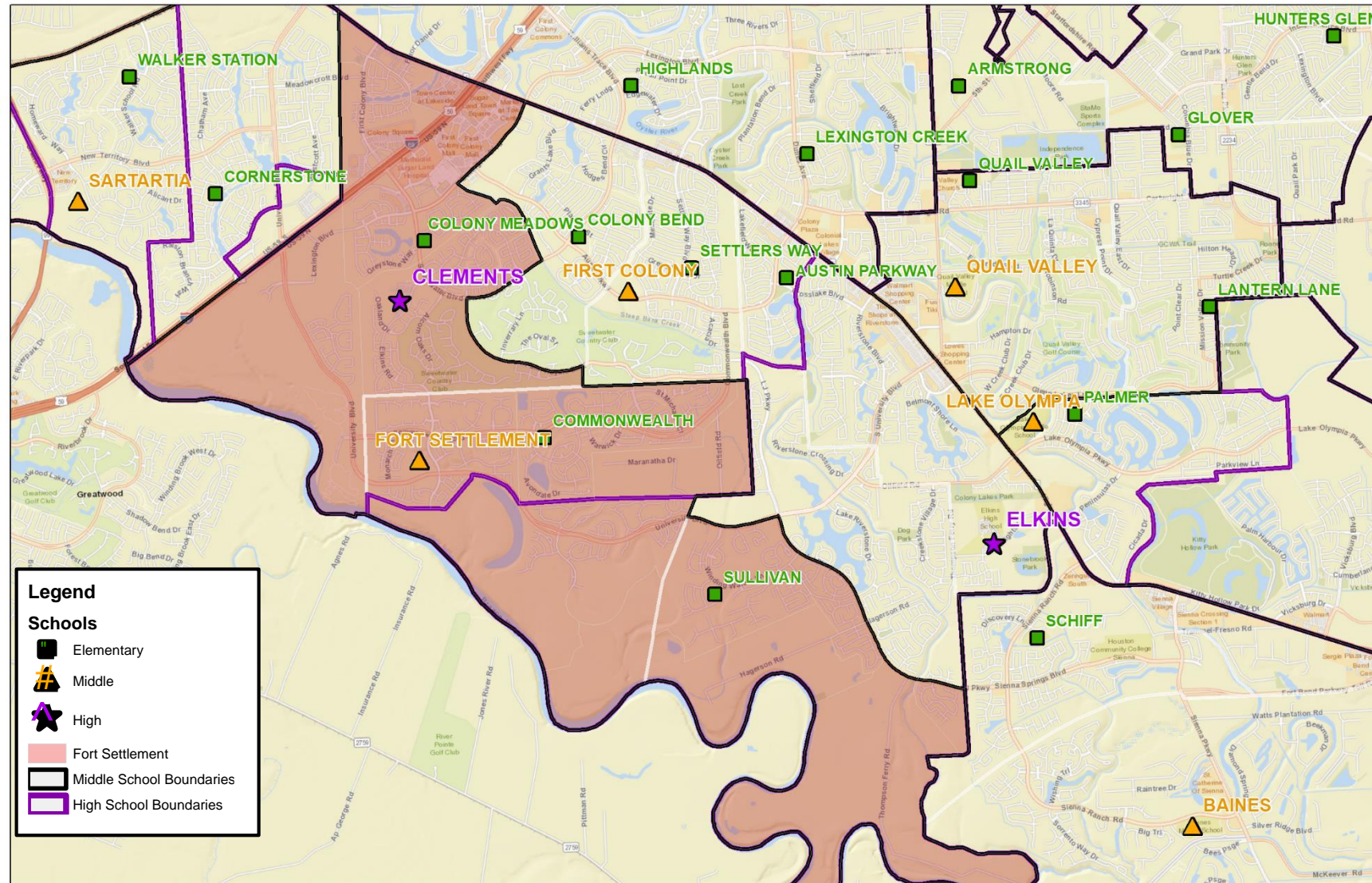
## CURRENT BOUNDARY





# FORT SETTLEMENT MIDDLE SCHOOL

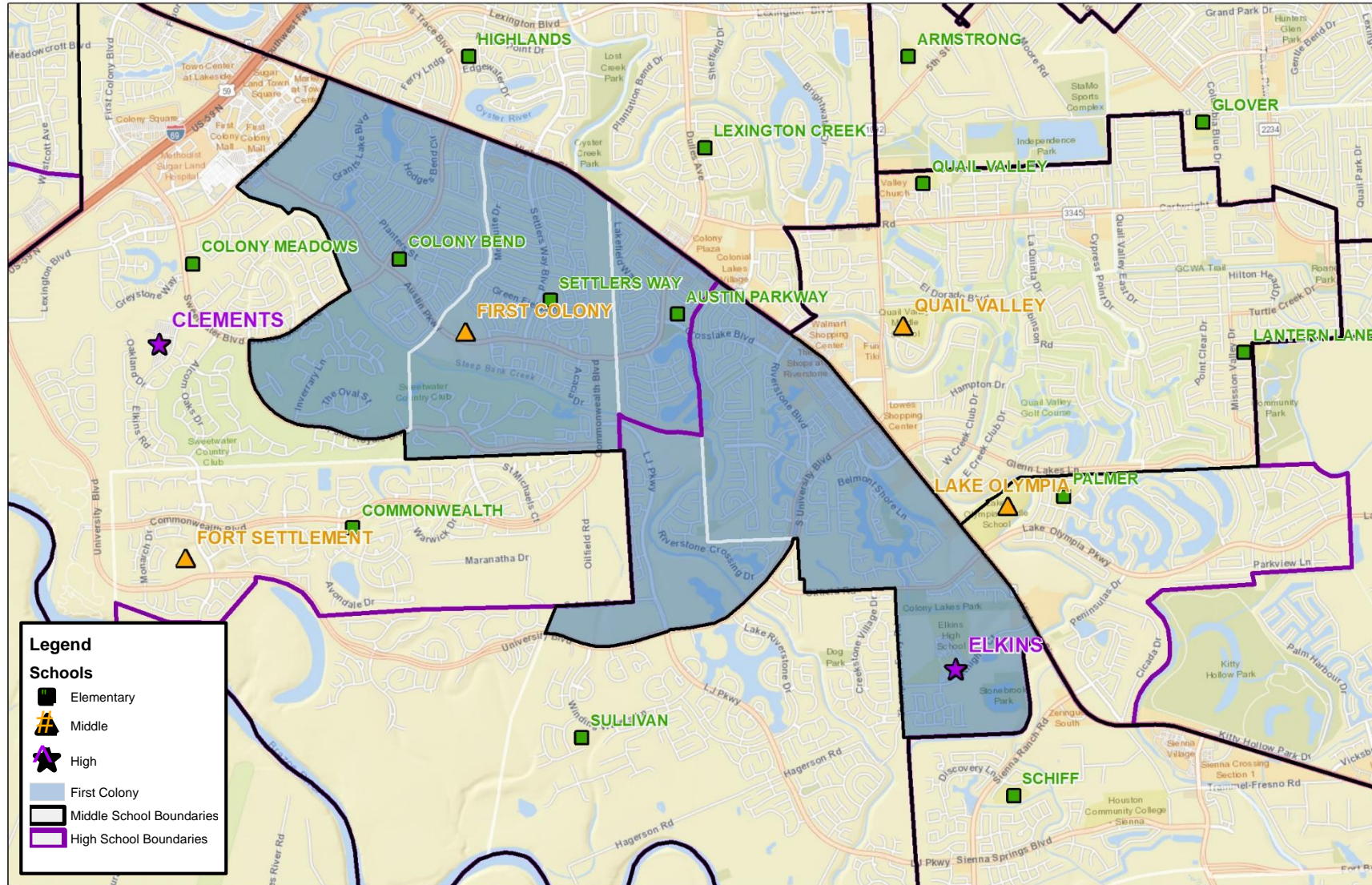
## PROPOSED BOUNDARY





# FIRST COLONY MIDDLE SCHOOL

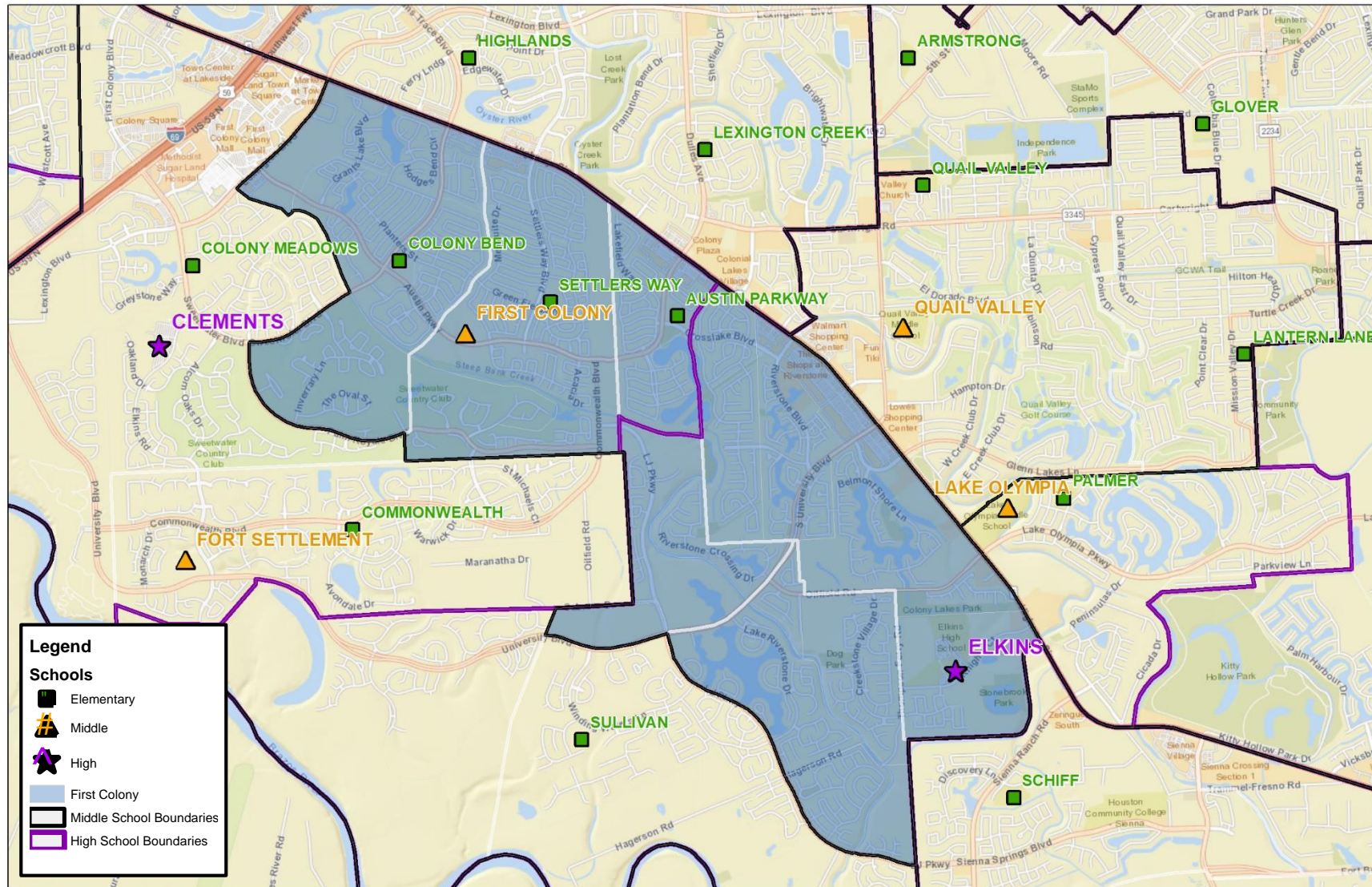
## CURRENT BOUNDARY





# FIRST COLONY MIDDLE SCHOOL

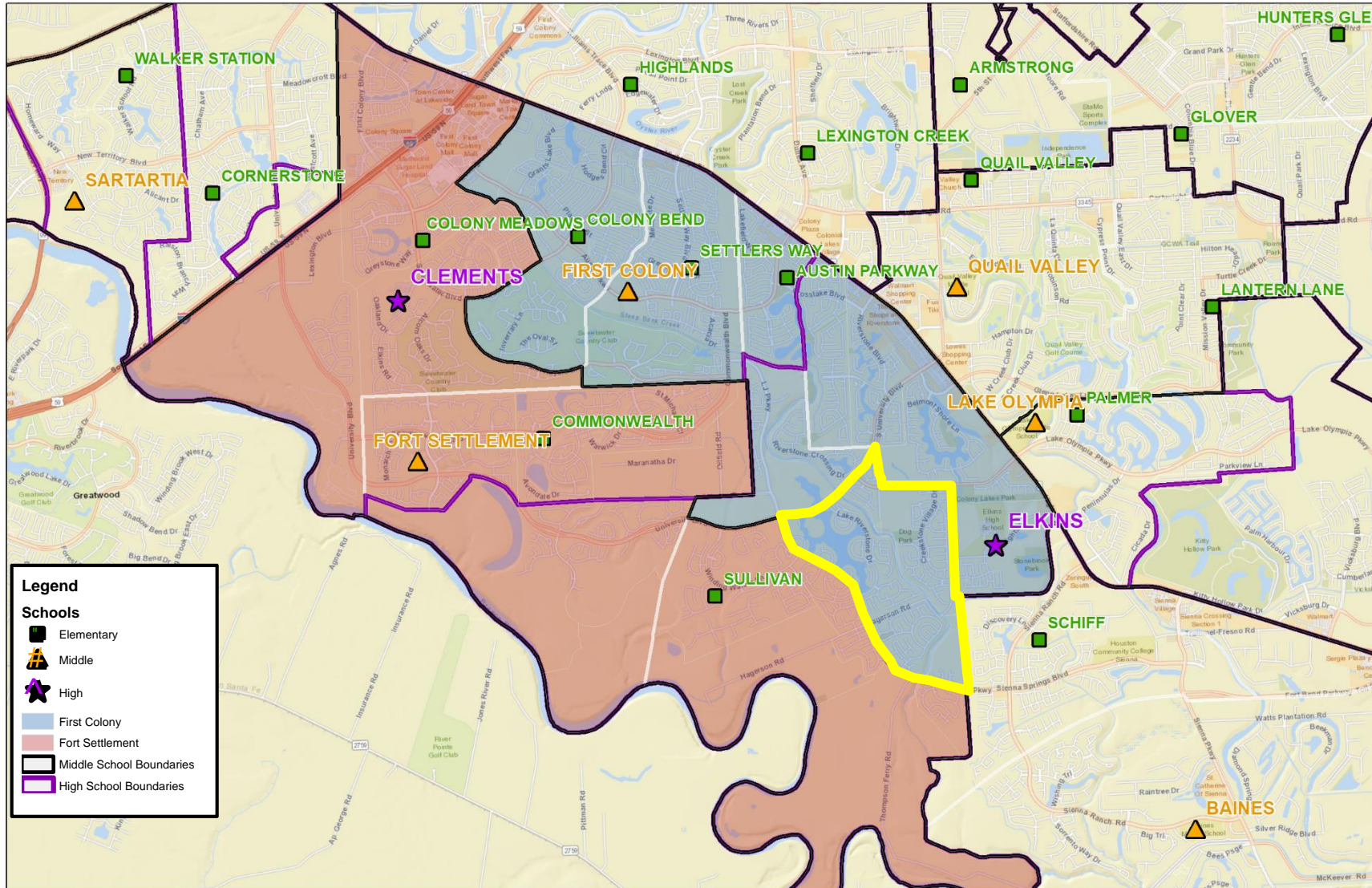
## PROPOSED BOUNDARY





# FCMS AND FSMS BOUNDARIES

## PROPOSED BOUNDARIES



**Legend**

**Schools**

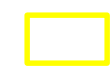
- Elementary
- Middle
- High

First Colony

Fort Settlement

Middle School Boundaries

High School Boundaries

 Proposed Change Area





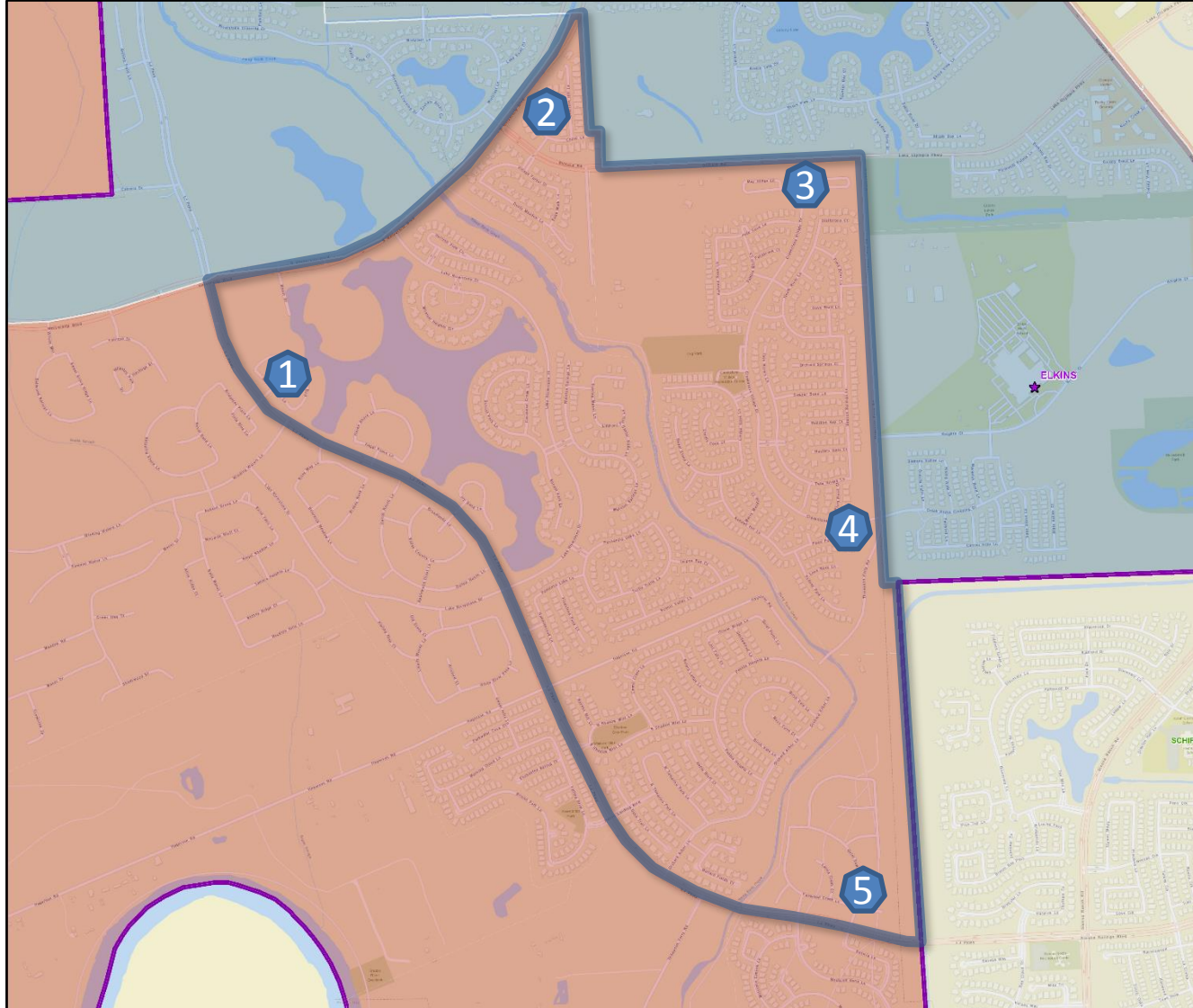
First Colony MS



Fort Settlement MS

# BALANCING FCMS AND FSMS

SCENARIO TO MOVE AREA EAST OF LJ PARKWAY TO FCMS IN 2019-20



Location	Description	Drive Time and Distance to:	
		FSMS	FCMS
1	Waterside Retreat & LJ Parkway	7 mins. / 3.4 miles	6 mins. / 2.8 miles
2	Stonebank Dr. & Oilfield Rd.	8 mins. 3.9 miles	8 mins. / 3.4 miles
3	Creekstone Village Dr. & Oilfield Rd.	9 mins. / 4.5 miles	9 mins. / 3.9 miles
4	Creekstone Crossing Dr. & Paradise River Dr.	11 mins. / 5.4 miles	11 mins / 4.8 miles
5	Quiet Dawn Ln. & LJ Parkway	9 mins. / 5.1 miles	9 mins. / 4.5 miles

Drive Time and Distance calculated using google maps

This map illustrates the FSMS zone in pink, FCMS zone in blue, and the proposed area to move from FSMS to FCMS in pink with blue outline. This area starts from the intersection of LJ Parkway and University Blvd. This area is defined as:

- East past Riverstone Blvd.
- Straight south encompassing the Terrace at Riverstone to Oilfield Rd
- East to Thompson Ferry Rd
- Straight south back to LJ Parkway
- North and West on LJ Parkway back to University

# BALANCING FCMS AND FSMS



## OVERVIEW

CURRENT	PROPOSED SCENARIO
<ul style="list-style-type: none"> <li>Fort Settlement MS is at 89% of design capacity while First Colony MS is at 63% of design capacity.</li> <li>First Colony MS enrollment was reduced when the Schiff ES feeder pattern was changed to Baines MS in the fall of 2018 with the opening of Thornton MS.</li> <li>A longer term solution is for Elementary 53 to be a feeder school into First Colony MS.                             <ul style="list-style-type: none"> <li>ES 53 will provide relief for Sullivan and Commonwealth elementary schools.</li> </ul> </li> <li>Reminder: Cornerstone Elementary feeds into Sartartia MS, not Fort Settlement MS.</li> </ul>	<ul style="list-style-type: none"> <li>Impacts 343 students (if we assume rising 6<sup>th</sup>-8<sup>th</sup> graders move as illustrated in the tables below).</li> <li>107 rising 8<sup>th</sup> graders – policy FC (LOCAL) allows for rising 8<sup>th</sup> graders to remain at their current school if they provide their own transportation</li> <li>This area moved to Sullivan ES from Settlers Way ES and Commonwealth ES when Sullivan ES opened.</li> <li>Keeps Fort Settlement MS under 100% of design capacity during the 10-year planning horizon.</li> <li>Creates a feeder split at Sullivan ES (45% to Fort Settlement MS, 55% to First Colony MS) until ES 53 opens. When ES 53 opens, the remaining Sullivan ES boundary would likely feed 100% into Fort Settlement MS and ES 53 would feed 100% into First Colony MS.</li> <li>This area would likely move to ES 53 when it opens- date TBD.</li> </ul>

### Current Utilization:

	Design	Current	Projected Enrollment										Projected Utilization										
Campus	Capacity	2018-19	2019-20	2020-21	2021-22	2022-23	2023-24	2024-25	2025-26	2026-27	2027-28	2028-29	2018-19	2019-20	2020-21	2021-22	2022-23	2023-24	2024-25	2025-26	2026-27	2027-28	2028-29
First Colony	1,515	958	945	964	967	952	941	935	942	955	969	980	63%	62%	64%	64%	63%	62%	62%	62%	63%	64%	65%
Fort Settlement	1,723	1,536	1,633	1,747	1,793	1,881	1,861	1,808	1,724	1,710	1,732	1,753	89%	95%	101%	104%	109%	108%	105%	100%	99%	101%	102%

Capacity numbers are based on PBK Audited Design Capacity, enrollment is based on 2018-19 PASA Data

### Proposed Utilization:

	Design	Current	Projected Enrollment										Projected Utilization										
Campus	Capacity	2018-19	2019-20	2020-21	2021-22	2022-23	2023-24	2024-25	2025-26	2026-27	2027-28	2028-29	2018-19	2019-20	2020-21	2021-22	2022-23	2023-24	2024-25	2025-26	2026-27	2027-28	2028-29
First Colony	1,515	958	1,328	1,317	1,306	1,313	1,290	1,278	1,257	1,275	1,294	1,308	63%	88%	87%	86%	87%	85%	84%	83%	84%	85%	86%
Fort Settlement	1,723	1,536	1,298	1,394	1,454	1,520	1,512	1,465	1,409	1,390	1,407	1,425	89%	75%	81%	84%	88%	88%	85%	82%	81%	82%	83%

Capacity numbers are based on PBK Audited Design Capacity, enrollment is based on 2018-19 PASA Data