

The SOUNDTRACK of AMERICA  
MADE IN  
**TENNESSEE**  
☆☆☆

# 2018 ECONOMIC IMPACT OF TRAVEL ON TENNESSEE

AUGUST 6, 2019

Tennessee Department of Tourist Development



# ECONOMIC IMPACT of Travel on Tennessee 2018

Total Economic Impact includes domestic and international travel | Source: U.S. Travel Association

## \$22.02B

Travel Expenditures

↑ 6.0% INCREASE

20% higher than the national growth rate of travel-generated expenditures of 4.9%



International traveler expenditure growth is

# 7X THE NATIONAL AVERAGE

5.4% TN  
vs  
0.8% US

## \$1.81B

State & Local Tax Revenue

↑ 4.5% INCREASE

Higher than the national growth of travel generated state and local tax revenues of 4%

## \$4.99B

Payroll

↑ 6.9% INCREASE

Higher than the national growth of travel generated payroll of 3.6%

## 189,757

Employment

↑ 2.9% INCREASE

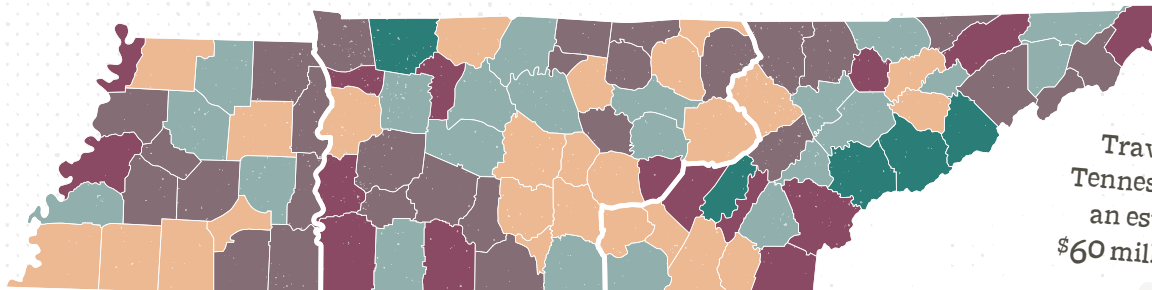
More than double than the national growth rate of travel generated employment of 1.3%

Travel generated over **\$50 MILLION** in **NEW** state & local tax dollars in 2018, approximately \$25 million of which directly supports public education.

Travel-generated tax revenue reduces the average Tennessee household's state & local tax burden by **\$712 ANNUALLY**.

## ALL 95 COUNTIES SAW AN INCREASE IN DOMESTIC TRAVEL SPENDING

See pages 6-15 for complete county-level data



Travelers in Tennessee spend an estimated \$60 million a day.

Colored by % increase

■ 7.4-9.2%

■ 5.8-7.1%

■ 3.9-5.6%

■ 2.1-3.8%

■ 0.3-2.1%



# VISITATION 2018

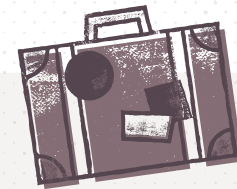
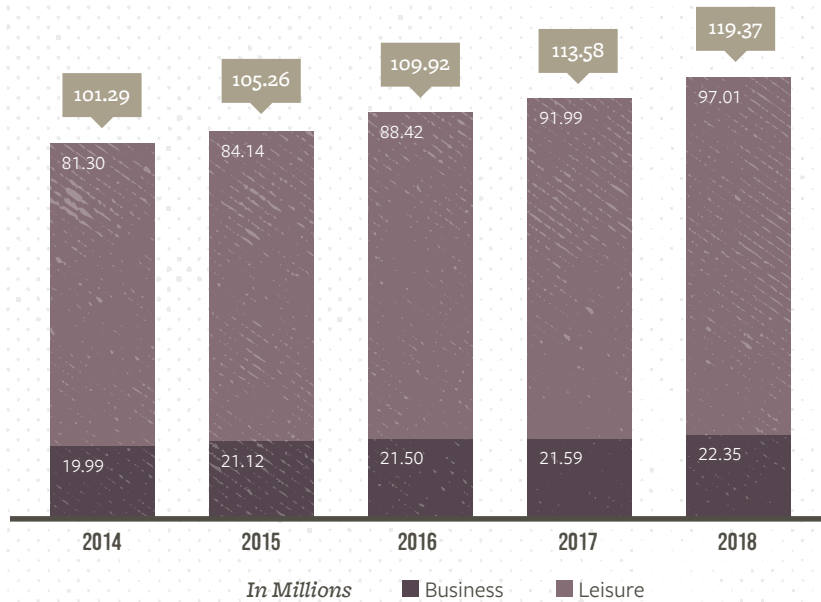
Source: D.K. Shifflet & Associates



## \$119.37M DOMESTIC VISITORS

Up **5.1%** in 2018, the highest growth in the past 6 years

### TENNESSEE VISITORS VOLUME



#### RECORD SETTING

# 81.3%

of visitors were  
leisure travelers

↑ **5.5% INCREASE**



Overall Leisure Visitor Satisfaction: **8.63/10**, higher than the national average

### AVERAGE PARTY PER TRIP SPENDING IN TENNESSEE



## \$409

YEAR ROUND



## \$352

WINTER



## \$435

SPRING



## \$455

SUMMER



## \$385

FALL



# LEISURE & HOSPITALITY 2018



The Tennessee Departments of Revenue & Labor and Workforce Development provide new data on the leisure and hospitality industry which includes: arts, entertainment, recreation, accomodation, and food services.

FROM THE  
DEPARTMENT  
OF REVENUE

Leisure & Hospitality state tax revenues are up **6.4%**:  
**\$1.26B IN STATE TAX REVENUE**

FROM THE DEPARTMENT  
OF LABOR &  
WORKFORCE  
DEVELOPMENT

Leisure & Hospitality employees make up **11.2%** of total nonfarm employment

**340,688** TOTAL EMPLOYEES

Wages are up **7.9%**

## 1,500 HOTELS

with **132,950** rooms across the state

25,814 additional rooms in the pipeline, a **19% increase** of the market's existing supply\*

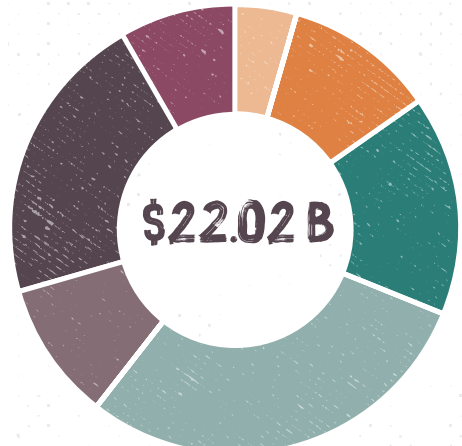
Revenue per Available Room (RevPAR)

**INCREASED 5.6%**  
to **\$73.38** per day\*

SECTOR	EXPENDITURES	% CHANGE
INTERNATIONAL	1,041.4 M	5.4
ENTERTAINMENT & RECREATION	2,341.6 M	4.9
AUTO TRANSPORTATION	3,508.8 M	8.5
FOOD SERVICE	6,469.4 M	3.9
GENERAL RETAIL TRADE	2,177.2 M	4.5
LODGING	4,645.6 M	7.9
PUBLIC TRANSPORTATION	1,833.9 M	7.7

### ALL INDUSTRIES EXPERIENCED AN INCREASE IN SPENDING IN 2018

Source: U.S. Travel Association





# ECONOMIC IMPACT of Travel on Tennessee by Industry

Source: U.S. Travel Association

	2017	2018	2018/17
	(\$ Millions)	(\$ Millions)	(% Change)
<b>TRAVEL EXPENDITURES</b>			
PUBLIC TRANSPORTATION	\$1,703.3	\$1,833.9	7.7%
AUTO TRANSPORTATION	3,234.1	3,508.8	8.5%
LODGING	4,304.9	4,645.6	7.9%
FOOD SERVICE	6,224.3	6,469.4	3.9%
ENTERTAINMENT & RECREATION	2,232.2	2,341.6	4.9%
GENERAL RETAIL TRADE	2,084.0	2,177.2	4.5%
<b>DOMESTIC</b>	<b>\$19,782.8</b>	<b>\$20,976.49</b>	<b>6.0%</b>
<b>INTERNATIONAL</b>	<b>988.3</b>	<b>1,041.4</b>	<b>5.4%</b>
<b>TOTAL</b>	<b>\$20,771.1</b>	<b>\$22,017.9</b>	<b>6.0%</b>

	2017	2018	2018/17
	(\$ Millions)	(\$ Millions)	(% Change)
<b>PAYROLL INCOME GENERATED</b>			
PUBLIC TRANSPORTATION	\$524.2	\$583.3	11.3%
AUTO TRANSPORTATION	169.9	180.8	6.4%
LODGING	855.4	932.2	9.0%
FOOD SERVICE	1,584.2	1,676.5	5.8%
ENTERTAINMENT & RECREATION	838.5	909.0	8.4%
GENERAL RETAIL TRADE	340.6	349.7	2.7%
TRAVEL PLANNING	128.1	118.0	-7.9%
<b>DOMESTIC</b>	<b>\$4,441.0</b>	<b>\$4,749.6</b>	<b>6.9%</b>
<b>INTERNATIONAL</b>	<b>231.3</b>	<b>246.9</b>	<b>6.7%</b>
<b>TOTAL</b>	<b>\$4,672.4</b>	<b>\$4,996.4</b>	<b>6.9%</b>

	2017	2018	2018/17
	(Thousands)	(Thousands)	(% Change)
<b>EMPLOYMENT GENERATED</b>			
PUBLIC TRANSPORTATION	9.5	10.3	7.5%
AUTO TRANSPORTATION	5.3	5.4	1.7%
LODGING	32.6	33.9	3.9%
FOOD SERVICE	88.5	90.3	2.1%
ENTERTAINMENT & RECREATION	23.2	24.4	5.1%
GENERAL RETAIL TRADE	13.9	13.9	0.1%
TRAVEL PLANNING	2.2	2.2	0.0%
<b>DOMESTIC</b>	<b>175.3</b>	<b>180.5</b>	<b>2.9%</b>
<b>INTERNATIONAL</b>	<b>9.1</b>	<b>9.3</b>	<b>2.7%</b>
<b>TOTAL</b>	<b>184.3</b>	<b>189.8</b>	<b>2.9%</b>

	2017	2018	2018/17
	(\$ Millions)	(\$ Millions)	(% Change)
<b>TAX REVENUE GENERATED</b>			
FEDERAL	\$1,627.2	\$1,721.0	5.8%
STATE	1,075.1	1,123.4	4.5%
LOCAL	572.4	596.5	4.2%
<b>DOMESTIC</b>	<b>\$3,274.7</b>	<b>\$3,440.9</b>	<b>5.1%</b>
<b>INTERNATIONAL</b>	<b>189.3</b>	<b>200.2</b>	<b>5.7%</b>
<b>TOTAL</b>	<b>\$3,464.1</b>	<b>\$3,641.1</b>	<b>5.1%</b>



# ECONOMIC IMPACT of Travel on Tennessee by County

County level data includes domestic travel only. | Source: U.S. Travel Association



	EXPENDITURES (\$ Millions)	PAYROLL (\$ Millions)	EMPLOYMENT (Thousands)	STATE TAX RECEIPTS (\$ Millions)	LOCAL TAX RECEIPTS (\$ Millions)
<b>ANDERSON</b>					
2018	\$136.92	\$26.71	1.09	\$8.29	\$2.91
2017	\$128.44	\$25.08	1.06	\$7.89	\$2.77
% CHANGE	6.61%	6.47%	2.76%	5.07%	5.03%
<b>BEDFORD</b>					
2018	\$30.11	\$6.05	0.23	\$1.77	\$1.16
2017	\$28.85	\$5.80	0.22	\$1.72	\$1.13
% CHANGE	4.36%	4.22%	0.86%	2.85%	2.82%
<b>BENTON</b>					
2018	\$28.12	\$4.70	0.16	\$1.72	\$2.97
2017	\$27.14	\$4.54	0.16	\$1.68	\$2.91
% CHANGE	3.62%	3.48%	0.14%	2.12%	2.09%
<b>BLED SOE</b>					
2018	\$3.48	\$0.52	0.02	\$0.20	\$0.55
2017	\$3.42	\$0.51	0.02	\$0.20	\$0.55
% CHANGE	1.70%	1.57%	-1.71%	0.24%	0.20%
<b>BLOUNT</b>					
2018	\$407.85	\$109.86	3.65	\$22.31	\$13.85
2017	\$377.95	\$100.48	3.50	\$20.98	\$13.03
% CHANGE	7.91%	9.34%	4.29%	6.36%	6.32%
<b>BRADLEY</b>					
2018	\$148.46	\$18.30	1.05	\$9.18	\$3.12
2017	\$141.91	\$17.52	1.03	\$8.90	\$3.03
% CHANGE	4.62%	4.49%	1.42%	3.11%	3.07%
<b>CAMPBELL</b>					
2018	\$60.87	\$12.09	0.49	\$3.55	\$3.12
2017	\$58.82	\$11.70	0.49	\$3.48	\$3.06
% CHANGE	3.48%	3.35%	0.88%	1.99%	1.95%
<b>CANNON</b>					
2018	\$4.44	\$0.48	0.01	\$0.27	\$0.31
2017	\$4.26	\$0.46	0.01	\$0.26	\$0.30
% CHANGE	4.32%	4.19%	0.82%	2.82%	2.78%
<b>CARROLL</b>					
2018	\$21.07	\$3.22	0.12	\$1.24	\$0.79
2017	\$20.15	\$3.08	0.12	\$1.20	\$0.77
% CHANGE	4.52%	4.39%	1.02%	3.02%	2.98%

	EXPENDITURES (\$ Millions)	PAYROLL (\$ Millions)	EMPLOYMENT (Thousands)	STATE TAX RECEIPTS (\$ Millions)	LOCAL TAX RECEIPTS (\$ Millions)
<b>CARTER</b>					
2018	\$40.94	\$6.49	0.22	\$2.49	\$2.54
2017	\$39.47	\$6.26	0.22	\$2.44	\$2.49
% CHANGE	3.74%	3.60%	0.26%	2.24%	2.20%
<b>CHEATHAM</b>					
2018	\$24.00	\$4.66	0.15	\$1.40	\$0.81
2017	\$23.77	\$4.62	0.16	\$1.40	\$0.81
% CHANGE	0.97%	0.85%	-2.41%	-0.48%	-0.52%
<b>CHESTER</b>					
2018	\$12.21	\$1.35	0.04	\$0.76	\$0.38
2017	\$11.69	\$1.29	0.04	\$0.74	\$0.37
% CHANGE	4.49%	4.35%	0.98%	2.98%	2.94%
<b>CLAIBORNE</b>					
2018	\$21.14	\$3.81	0.15	\$1.23	\$1.57
2017	\$19.93	\$3.60	0.14	\$1.18	\$1.50
% CHANGE	6.06%	5.93%	2.51%	4.54%	4.50%
<b>CLAY</b>					
2018	\$7.31	\$1.73	0.05	\$0.41	\$0.63
2017	\$7.09	\$1.68	0.05	\$0.40	\$0.62
% CHANGE	3.21%	3.07%	-0.25%	1.72%	1.68%
<b>COCKE</b>					
2018	\$50.98	\$10.72	0.48	\$2.98	\$2.24
2017	\$47.45	\$9.99	0.46	\$2.82	\$2.12
% CHANGE	7.44%	7.30%	3.84%	5.89%	5.85%
<b>COFFEE</b>					
2018	\$100.23	\$20.39	0.82	\$5.95	\$2.61
2017	\$95.07	\$19.36	0.80	\$5.73	\$2.51
% CHANGE	5.43%	5.29%	1.89%	3.91%	3.87%
<b>CROCKETT</b>					
2018	\$9.52	\$1.61	0.07	\$0.56	\$0.41
2017	\$9.18	\$1.55	0.07	\$0.54	\$0.40
% CHANGE	3.72%	3.59%	0.25%	2.23%	2.19%
<b>CUMBERLAND</b>					
2018	\$127.80	\$29.99	1.09	\$7.36	\$5.29
2017	\$121.54	\$28.56	1.07	\$7.10	\$5.11
% CHANGE	5.15%	5.02%	1.62%	3.63%	3.60%
<b>DAVIDSON</b>					
2018	\$6,961.35	\$1,786.00	71.14	\$346.72	\$175.69
2017	\$6,505.39	\$1,649.73	68.32	\$328.74	\$166.64
% CHANGE	7.01%	8.26%	4.13%	5.47%	5.43%

	EXPENDITURES (\$ Millions)	PAYROLL (\$ Millions)	EMPLOYMENT (Thousands)	STATE TAX RECEIPTS (\$ Millions)	LOCAL TAX RECEIPTS (\$ Millions)
<b>DECATUR</b>					
2018	\$14.15	\$1.96	0.05	\$0.80	\$2.48
2017	\$13.63	\$1.89	0.05	\$0.78	\$2.43
% CHANGE	3.78%	3.64%	0.30%	2.28%	2.24%
<b>DEKALB</b>					
2018	\$49.54	\$10.85	0.33	\$2.88	\$6.44
2017	\$48.02	\$10.53	0.34	\$2.83	\$6.33
% CHANGE	3.16%	3.03%	-0.30%	1.67%	1.64%
<b>DICKSON</b>					
2018	\$74.09	\$15.11	0.65	\$4.40	\$1.79
2017	\$70.03	\$14.31	0.63	\$4.22	\$1.72
% CHANGE	5.79%	5.66%	2.24%	4.27%	4.23%
<b>DYER</b>					
2018	\$64.18	\$11.89	0.48	\$3.95	\$1.49
2017	\$62.85	\$11.66	0.49	\$3.92	\$1.48
% CHANGE	2.12%	1.99%	-1.30%	0.65%	0.62%
<b>FAYETTE</b>					
2018	\$9.79	\$1.45	0.05	\$0.57	\$0.53
2017	\$9.34	\$1.39	0.05	\$0.55	\$0.51
% CHANGE	4.74%	4.61%	1.23%	3.23%	3.19%
<b>FENTRESS</b>					
2018	\$13.02	\$2.22	0.09	\$0.76	\$0.87
2017	\$12.71	\$2.17	0.09	\$0.75	\$0.86
% CHANGE	2.49%	2.36%	-0.94%	1.02%	0.98%
<b>FRANKLIN</b>					
2018	\$24.71	\$4.59	0.16	\$1.51	\$1.14
2017	\$23.23	\$4.32	0.15	\$1.44	\$1.09
% CHANGE	6.39%	6.25%	2.82%	4.86%	4.82%
<b>GIBSON</b>					
2018	\$49.87	\$6.64	0.24	\$3.19	\$1.47
2017	\$47.12	\$6.28	0.23	\$3.06	\$1.41
% CHANGE	5.82%	5.69%	2.27%	4.30%	4.26%
<b>GILES</b>					
2018	\$25.69	\$4.27	0.16	\$1.59	\$1.10
2017	\$25.40	\$4.23	0.17	\$1.59	\$1.10
% CHANGE	1.13%	1.00%	-2.26%	-0.33%	-0.36%
<b>GRAINGER</b>					
2018	\$17.39	\$2.90	0.09	\$0.99	\$0.33
2017	\$16.71	\$2.79	0.09	\$0.97	\$0.32
% CHANGE	4.06%	3.93%	0.57%	2.56%	2.53%



	EXPENDITURES (\$ Millions)	PAYROLL (\$ Millions)	EMPLOYMENT (Thousands)	STATE TAX RECEIPTS (\$ Millions)	LOCAL TAX RECEIPTS (\$ Millions)
<b>GREENE</b>					
2018	\$94.09	\$17.18	0.64	\$5.75	\$2.48
2017	\$91.71	\$16.77	0.64	\$5.69	\$2.46
% CHANGE	2.59%	2.46%	-0.85%	1.12%	1.08%
<b>GRUNDY</b>					
2018	\$9.15	\$1.17	0.02	\$0.54	\$1.60
2017	\$8.81	\$1.13	0.02	\$0.53	\$1.57
% CHANGE	3.90%	3.77%	0.42%	2.41%	2.37%
<b>HAMBLEN</b>					
2018	\$106.65	\$11.53	0.58	\$6.58	\$2.32
2017	\$100.44	\$10.86	0.56	\$6.29	\$2.22
% CHANGE	6.18%	6.16%	2.62%	4.65%	4.61%
<b>HAMILTON</b>					
2018	\$1,165.45	\$219.90	8.97	\$68.03	\$25.61
2017	\$1,112.61	\$208.57	8.84	\$65.89	\$24.81
% CHANGE	4.75%	5.43%	1.50%	3.24%	3.20%
<b>HANCOCK</b>					
2018	\$1.33	\$0.17	0.01	\$0.08	\$0.27
2017	\$1.28	\$0.16	0.01	\$0.07	\$0.27
% CHANGE	3.46%	3.33%	-0.01%	1.97%	1.93%
<b>HARDEMAN</b>					
2018	\$26.89	\$4.32	0.16	\$1.60	\$1.52
2017	\$25.86	\$4.16	0.16	\$1.56	\$1.48
% CHANGE	3.98%	3.84%	0.49%	2.48%	2.44%
<b>HARDIN</b>					
2018	\$43.78	\$8.04	0.25	\$2.59	\$3.69
2017	\$42.55	\$7.82	0.25	\$2.56	\$3.64
% CHANGE	2.90%	2.77%	-0.55%	1.41%	1.38%
<b>HAWKINS</b>					
2018	\$39.08	\$6.70	0.25	\$2.24	\$2.13
2017	\$38.95	\$6.68	0.26	\$2.26	\$2.16
% CHANGE	0.32%	0.20%	-3.04%	-1.12%	-1.16%
<b>HAYWOOD</b>					
2018	\$16.09	\$2.63	0.09	\$0.95	\$0.70
2017	\$15.55	\$2.55	0.09	\$0.93	\$0.69
% CHANGE	3.45%	3.32%	0.37%	1.96%	1.92%
<b>HENDERSON</b>					
2018	\$29.54	\$4.60	0.18	\$1.79	\$0.93
2017	\$27.82	\$4.34	0.17	\$1.71	\$0.89
% CHANGE	6.18%	6.04%	2.62%	4.65%	4.61%

	EXPENDITURES (\$ Millions)	PAYROLL (\$ Millions)	EMPLOYMENT (Thousands)	STATE TAX RECEIPTS (\$ Millions)	LOCAL TAX RECEIPTS (\$ Millions)
<b>HENRY</b>					
2018	\$58.57	\$11.05	0.33	\$3.41	\$7.40
2017	\$57.26	\$10.82	0.34	\$3.38	\$7.35
% CHANGE	2.29%	2.16%	-1.14%	0.81%	0.78%
<b>HICKMAN</b>					
2018	\$8.83	\$1.38	0.05	\$0.52	\$0.84
2017	\$8.64	\$1.35	0.05	\$0.51	\$0.83
% CHANGE	2.17%	2.04%	-1.25%	0.70%	0.67%
<b>HOUSTON</b>					
2018	\$6.25	\$1.01	0.04	\$0.36	\$0.67
2017	\$6.13	\$0.99	0.04	\$0.36	\$0.67
% CHANGE	2.02%	1.89%	-1.40%	0.55%	0.51%
<b>HUMPHREYS</b>					
2018	\$37.81	\$7.83	0.29	\$2.01	\$2.46
2017	\$36.31	\$7.53	0.29	\$1.96	\$2.40
% CHANGE	4.13%	3.99%	0.63%	2.63%	2.59%
<b>JACKSON</b>					
2018	\$2.42	\$0.36	0.01	\$0.15	\$0.29
2017	\$2.36	\$0.35	0.01	\$0.15	\$0.29
% CHANGE	2.58%	2.45%	-0.86%	1.10%	1.07%
<b>JEFFERSON</b>					
2018	\$64.42	\$13.30	0.47	\$3.93	\$4.66
2017	\$61.55	\$12.73	0.46	\$3.81	\$4.52
% CHANGE	4.65%	4.52%	1.15%	3.15%	3.11%
<b>JOHNSON</b>					
2018	\$10.13	\$1.95	0.06	\$0.58	\$0.77
2017	\$10.09	\$1.95	0.07	\$0.59	\$0.78
% CHANGE	0.42%	-0.05%	-3.16%	-1.02%	-1.06%
<b>KNOX</b>					
2018	\$1,174.09	\$233.84	10.59	\$61.07	\$27.58
2017	\$1,097.85	\$215.84	10.24	\$57.94	\$26.18
% CHANGE	6.94%	8.34%	3.36%	5.41%	5.37%
<b>LAKE</b>					
2018	\$11.33	\$2.44	0.11	\$0.65	\$0.84
2017	\$11.10	\$2.40	0.11	\$0.64	\$0.83
% CHANGE	2.08%	1.64%	-1.58%	0.61%	0.57%
<b>LAUDERDALE</b>					
2018	\$17.99	\$2.62	0.09	\$1.05	\$1.42
2017	\$17.65	\$2.57	0.09	\$1.05	\$1.42
% CHANGE	1.91%	1.78%	-1.75%	0.44%	0.40%

	EXPENDITURES (\$ Millions)	PAYROLL (\$ Millions)	EMPLOYMENT (Thousands)	STATE TAX RECEIPTS (\$ Millions)	LOCAL TAX RECEIPTS (\$ Millions)
<b>LAWRENCE</b>					
2018	\$43.54	\$6.93	0.24	\$2.64	\$1.18
2017	\$41.15	\$6.56	0.24	\$2.53	\$1.13
% CHANGE	5.81%	5.67%	2.26%	4.28%	4.24%
<b>LEWIS</b>					
2018	\$6.97	\$1.18	0.05	\$0.40	\$0.33
2017	\$6.71	\$1.13	0.05	\$0.39	\$0.32
% CHANGE	3.82%	3.69%	0.34%	2.32%	2.29%
<b>LINCOLN</b>					
2018	\$24.32	\$3.81	0.15	\$1.50	\$0.77
2017	\$23.59	\$3.70	0.15	\$1.48	\$0.75
% CHANGE	3.09%	2.96%	-0.37%	1.61%	1.57%
<b>LOUDON</b>					
2018	\$60.91	\$11.85	0.47	\$3.71	\$1.52
2017	\$56.99	\$11.10	0.46	\$3.52	\$1.45
% CHANGE	6.89%	6.76%	3.31%	5.35%	5.31%
<b>MCMINN</b>					
2018	\$48.35	\$8.41	0.34	\$2.94	\$1.18
2017	\$45.59	\$7.94	0.33	\$2.81	\$1.13
% CHANGE	6.05%	5.92%	2.50%	4.53%	4.49%
<b>MCNAIRY</b>					
2018	\$12.18	\$1.85	0.06	\$0.70	\$0.67
2017	\$11.80	\$1.80	0.06	\$0.69	\$0.66
% CHANGE	3.23%	3.10%	-0.23%	1.75%	1.71%
<b>MACON</b>					
2018	\$8.18	\$1.34	0.05	\$0.48	\$0.43
2017	\$7.91	\$1.30	0.05	\$0.47	\$0.42
% CHANGE	3.48%	3.35%	0.01%	1.99%	1.95%
<b>MADISON</b>					
2018	\$214.83	\$45.49	1.89	\$12.82	\$4.57
2017	\$209.14	\$44.42	1.90	\$12.67	\$4.51
% CHANGE	2.72%	2.42%	-0.72%	1.24%	1.20%
<b>MARION</b>					
2018	\$40.62	\$8.14	0.32	\$2.44	\$1.46
2017	\$38.20	\$7.66	0.31	\$2.32	\$1.39
% CHANGE	6.33%	6.19%	2.76%	4.80%	4.76%
<b>MARSHALL</b>					
2018	\$24.51	\$4.85	0.17	\$1.50	\$0.64
2017	\$23.92	\$4.74	0.17	\$1.48	\$0.63
% CHANGE	2.45%	2.32%	-0.99%	0.97%	0.94%

	EXPENDITURES (\$ Millions)	PAYROLL (\$ Millions)	EMPLOYMENT (Thousands)	STATE TAX RECEIPTS (\$ Millions)	LOCAL TAX RECEIPTS (\$ Millions)
<b>MAURY</b>					
2018	\$138.87	\$22.39	0.88	\$8.50	\$2.87
2017	\$134.09	\$21.65	0.87	\$8.32	\$2.81
% CHANGE	3.57%	3.44%	1.06%	2.08%	2.04%
<b>MEIGS</b>					
2018	\$7.76	\$1.49	0.04	\$0.45	\$1.00
2017	\$7.68	\$1.48	0.04	\$0.45	\$1.01
% CHANGE	1.01%	0.88%	-2.38%	-0.44%	-0.48%
<b>MONROE</b>					
2018	\$41.86	\$8.30	0.31	\$2.45	\$2.81
2017	\$41.42	\$8.22	0.32	\$2.46	\$2.82
% CHANGE	1.06%	0.94%	-2.32%	-0.39%	-0.43%
<b>MONTGOMERY</b>					
2018	\$244.72	\$48.04	1.90	\$15.25	\$4.62
2017	\$224.27	\$44.08	1.81	\$14.18	\$4.30
% CHANGE	9.12%	8.98%	4.76%	7.55%	7.51%
<b>MOORE</b>					
2018	\$6.92	\$1.04	0.05	\$0.47	\$0.17
2017	\$6.61	\$0.99	0.05	\$0.46	\$0.16
% CHANGE	4.61%	4.48%	1.10%	3.10%	3.06%
<b>MORGAN</b>					
2018	\$5.21	\$0.62	0.01	\$0.31	\$0.66
2017	\$5.02	\$0.60	0.01	\$0.30	\$0.64
% CHANGE	3.92%	3.78%	0.43%	2.42%	2.38%
<b>OBION</b>					
2018	\$56.26	\$10.73	0.41	\$3.36	\$1.68
2017	\$53.51	\$10.22	0.40	\$3.24	\$1.62
% CHANGE	5.13%	4.99%	1.60%	3.61%	3.58%
<b>OVERTON</b>					
2018	\$8.40	\$1.42	0.05	\$0.51	\$0.52
2017	\$8.07	\$1.37	0.05	\$0.50	\$0.51
% CHANGE	4.05%	3.92%	0.56%	2.55%	2.52%
<b>PERRY</b>					
2018	\$7.16	\$1.00	0.02	\$0.38	\$1.86
2017	\$7.09	\$0.99	0.02	\$0.38	\$1.87
% CHANGE	0.93%	0.80%	-2.46%	-0.53%	-0.56%
<b>PICKETT</b>					
2018	\$8.02	\$1.86	0.06	\$0.44	\$1.12
2017	\$7.65	\$1.77	0.06	\$0.43	\$1.08
% CHANGE	4.90%	4.77%	1.39%	3.39%	3.35%

	EXPENDITURES (\$ Millions)	PAYROLL (\$ Millions)	EMPLOYMENT (Thousands)	STATE TAX RECEIPTS (\$ Millions)	LOCAL TAX RECEIPTS (\$ Millions)
<b>POLK</b>					
2018	\$30.42	\$7.80	0.25	\$1.64	\$2.63
2017	\$30.11	\$7.74	0.26	\$1.65	\$2.64
% CHANGE	1.00%	0.87%	-2.39%	-0.45%	-0.49%
<b>PUTNAM</b>					
2018	\$140.15	\$26.39	1.08	\$8.46	\$2.82
2017	\$132.03	\$24.89	1.06	\$8.09	\$2.70
% CHANGE	6.15%	6.02%	2.59%	4.62%	4.59%
<b>RHEA</b>					
2018	\$39.73	\$7.84	0.29	\$2.32	\$2.63
2017	\$36.40	\$7.19	0.27	\$2.15	\$2.44
% CHANGE	9.17%	9.03%	5.51%	7.60%	7.56%
<b>ROANE</b>					
2018	\$71.32	\$12.47	0.48	\$4.27	\$3.66
2017	\$69.82	\$12.22	0.49	\$4.25	\$3.64
% CHANGE	2.15%	2.02%	-1.28%	0.68%	0.64%
<b>ROBERTSON</b>					
2018	\$60.06	\$9.60	0.36	\$3.90	\$1.60
2017	\$56.89	\$9.11	0.35	\$3.75	\$1.53
% CHANGE	5.57%	5.44%	2.03%	4.05%	4.02%
<b>RUTHERFORD</b>					
2018	\$367.60	\$68.66	2.82	\$22.36	\$7.78
2017	\$351.45	\$65.73	2.79	\$21.69	\$7.55
% CHANGE	4.59%	4.46%	1.09%	3.09%	3.05%
<b>SCOTT</b>					
2018	\$12.24	\$1.91	0.08	\$0.68	\$0.72
2017	\$11.97	\$1.87	0.08	\$0.68	\$0.71
% CHANGE	2.32%	2.19%	-1.11%	0.85%	0.81%
<b>SEQUATCHIE</b>					
2018	\$7.22	\$1.14	0.03	\$0.42	\$0.53
2017	\$6.90	\$1.09	0.03	\$0.41	\$0.51
% CHANGE	4.68%	4.55%	1.17%	3.18%	3.14%
<b>SEVIER</b>					
2018	\$2,457.95	\$638.65	24.94	\$138.20	\$70.81
2017	\$2,276.46	\$590.93	24.04	\$129.86	\$66.56
% CHANGE	7.97%	8.08%	3.76%	6.42%	6.38%
<b>SHELBY</b>					
2018	\$3,652.27	\$780.73	23.37	\$179.50	\$101.17
2017	\$3,503.13	\$742.84	23.14	\$174.68	\$98.49
% CHANGE	4.26%	5.10%	0.96%	2.76%	2.72%

	EXPENDITURES (\$ Millions)	PAYROLL (\$ Millions)	EMPLOYMENT (Thousands)	STATE TAX RECEIPTS (\$ Millions)	LOCAL TAX RECEIPTS (\$ Millions)
<b>SMITH</b>					
2018	\$12.44	\$1.70	0.06	\$0.75	\$0.54
2017	\$11.92	\$1.63	0.06	\$0.73	\$0.52
% CHANGE	4.38%	4.25%	0.88%	2.88%	2.84%
<b>STEWART</b>					
2018	\$8.98	\$1.21	0.03	\$0.52	\$1.32
2017	\$8.68	\$1.17	0.03	\$0.51	\$1.30
% CHANGE	3.47%	3.34%	-0.00%	1.98%	1.94%
<b>SULLIVAN</b>					
2018	\$410.06	\$117.86	3.60	\$22.46	\$11.11
2017	\$386.70	\$109.95	3.51	\$21.49	\$10.63
% CHANGE	6.04%	7.19%	2.48%	4.51%	4.48%
<b>SUMNER</b>					
2018	\$157.99	\$28.12	1.14	\$9.75	\$3.58
2017	\$148.63	\$26.49	1.11	\$9.30	\$3.42
% CHANGE	6.30%	6.16%	2.73%	4.77%	4.73%
<b>TIPTON</b>					
2018	\$37.21	\$5.75	0.22	\$2.37	\$1.19
2017	\$34.75	\$5.38	0.22	\$2.24	\$1.13
% CHANGE	7.08%	6.94%	3.49%	5.54%	5.50%
<b>TROUSDALE</b>					
2018	\$4.23	\$0.54	0.02	\$0.26	\$0.14
2017	\$4.14	\$0.53	0.03	\$0.25	\$0.14
% CHANGE	2.18%	2.05%	-1.25%	0.71%	0.67%
<b>UNICOI</b>					
2018	\$9.51	\$2.18	0.08	\$0.53	\$0.77
2017	\$9.27	\$2.12	0.08	\$0.52	\$0.76
% CHANGE	2.57%	2.44%	-0.87%	1.09%	1.06%
<b>UNION</b>					
2018	\$7.03	\$1.28	0.03	\$0.40	\$1.03
2017	\$6.89	\$1.25	0.03	\$0.40	\$1.03
% CHANGE	2.02%	1.89%	-1.40%	0.55%	0.51%
<b>VAN BUREN</b>					
2018	\$9.80	\$2.36	0.07	\$0.55	\$1.02
2017	\$9.71	\$2.34	0.07	\$0.55	\$1.02
% CHANGE	0.93%	0.80%	-2.45%	-0.52%	-0.56%
<b>WARREN</b>					
2018	\$26.64	\$4.57	0.16	\$1.57	\$1.06
2017	\$25.45	\$4.37	0.16	\$1.53	\$1.02
% CHANGE	4.67%	4.54%	1.16%	3.16%	3.13%

	EXPENDITURES (\$ Millions)	PAYROLL (\$ Millions)	EMPLOYMENT (Thousands)	STATE TAX RECEIPTS (\$ Millions)	LOCAL TAX RECEIPTS (\$ Millions)
<b>WASHINGTON</b>					
2018	\$272.55	\$37.04	2.00	\$16.10	\$6.27
2017	\$257.54	\$34.83	1.95	\$15.44	\$6.01
% CHANGE	5.83%	6.35%	2.28%	4.31%	4.27%
<b>WAYNE</b>					
2018	\$11.37	\$2.09	0.07	\$0.67	\$0.72
2017	\$11.17	\$2.05	0.07	\$0.67	\$0.71
% CHANGE	1.74%	1.61%	-1.67%	0.28%	0.24%
<b>WEAKLEY</b>					
2018	\$21.69	\$3.49	0.13	\$1.30	\$0.72
2017	\$20.48	\$3.30	0.13	\$1.24	\$0.69
% CHANGE	5.91%	5.78%	2.36%	4.39%	4.35%
<b>WHITE</b>					
2018	\$23.49	\$2.83	0.09	\$1.42	\$1.10
2017	\$22.18	\$2.68	0.09	\$1.36	\$1.05
% CHANGE	5.92%	5.79%	2.37%	4.40%	4.36%
<b>WILLIAMSON</b>					
2018	\$479.58	\$94.51	3.71	\$28.59	\$9.72
2017	\$452.59	\$89.30	3.63	\$27.38	\$9.31
% CHANGE	5.96%	5.83%	2.41%	4.44%	4.40%
<b>WILSON</b>					
2018	\$172.25	\$35.52	1.34	\$10.26	\$5.04
2017	\$162.02	\$33.35	1.31	\$9.79	\$4.82
% CHANGE	6.31%	6.53%	2.75%	4.78%	4.74%

	EXPENDITURES (\$ Millions)	PAYROLL (\$ Millions)	EMPLOYMENT (Thousands)	STATE TAX RECEIPTS (\$ Millions)	LOCAL TAX RECEIPTS (\$ Millions)
<b>DOMESTIC TOTAL</b>					
2018	\$20,976.49	\$4,749.57	180.45	\$1,123.39	\$596.52
2017	\$19,782.81	\$4,441.03	175.28	\$1,075.10	\$572.40
% CHANGE	6.03%	6.95%	2.95%	4.49%	4.21%
<b>INTERNATIONAL TOTAL</b>					
2018	\$1,041.40	\$246.88	9.30	\$59.61	\$33.87
2017	\$988.29	\$231.34	9.06	\$56.60	\$31.97
% CHANGE	5.4%	6.7%	2.7%	5.32%	5.95%
<b>GRAND TOTAL</b>					
2018	\$22,017.89	\$4,996.45	189.76	\$1,183.00	\$630.38
2017	\$20,771.10	\$4,672.37	184.34	\$1,131.70	\$604.37
% CHANGE	6.00%	6.94%	2.94%	4.50%	4.30%



Obion R. Middle F. South F. North F. Paris  
Huntsville  
Forked Deer R. Middle R. Jackson  
Lexington  
Big Hatchey R. Madison  
Beche R. Perry  
Harrisburg  
Hickman  
Loosahatchy R. Shelby  
Memphis  
Wolf R. Fayette  
Hardeman  
Wainwright  
Waynesboro  
Swift  
Havana  
Florence  
Shoals

36

35