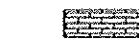



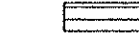


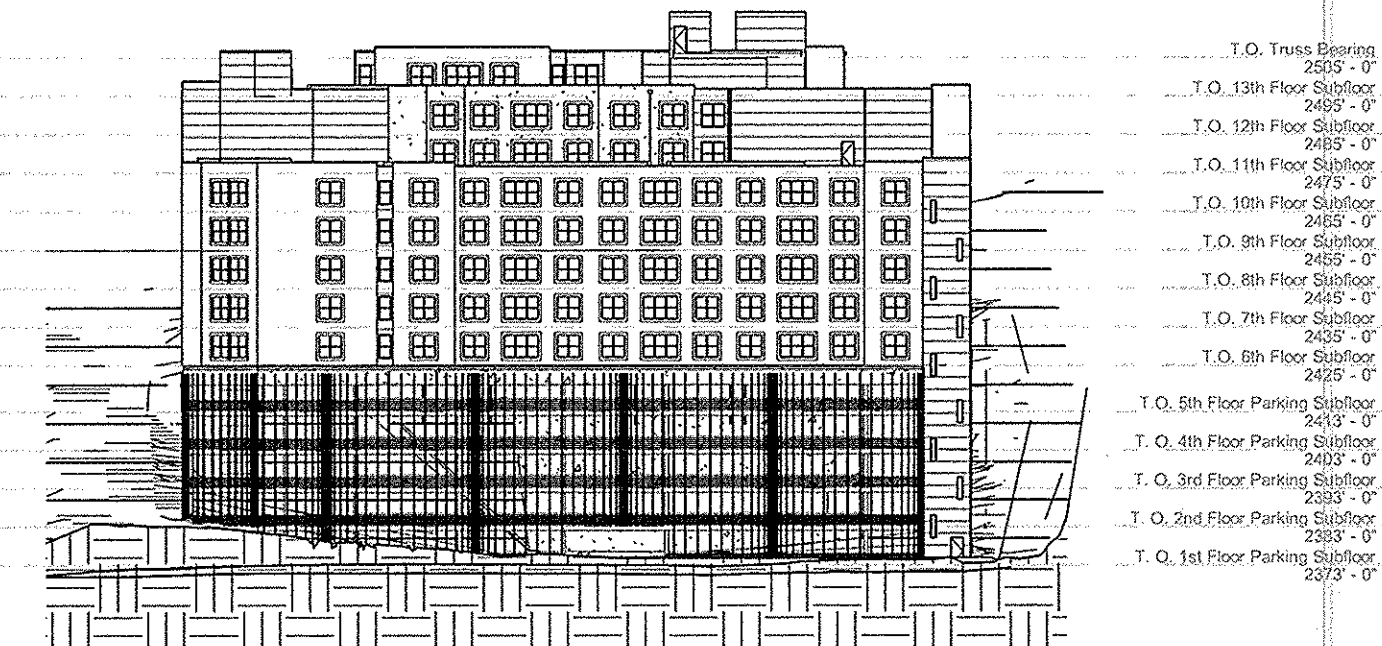


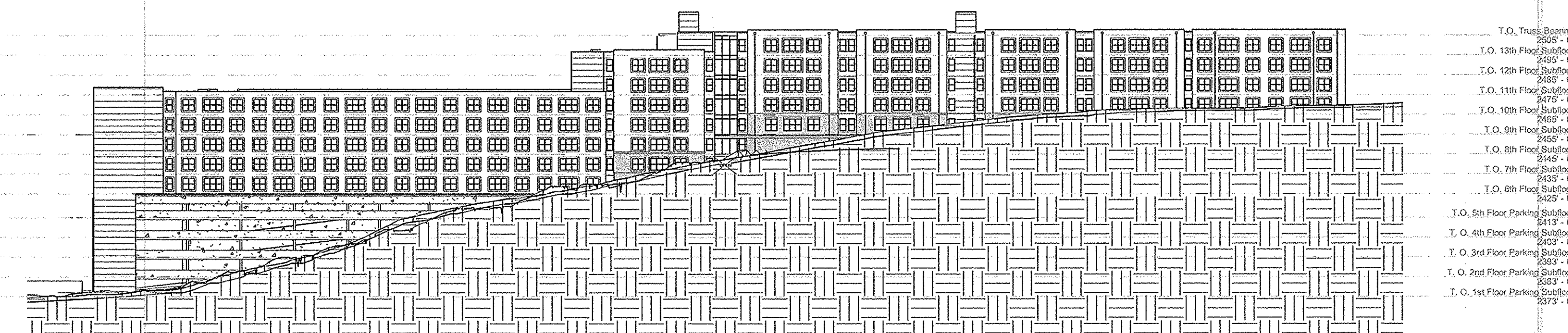
REFERENCE G-003 FOR GENERAL NOTES

### MATERIAL LEGEND

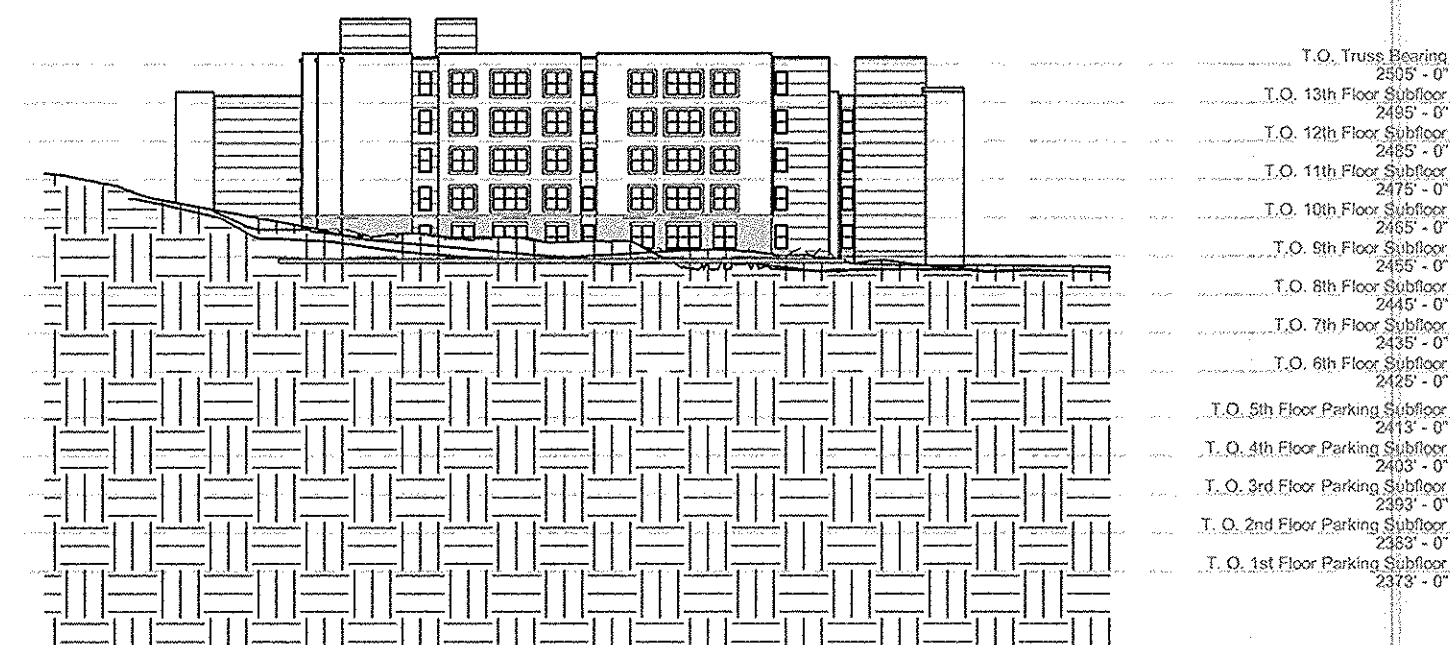
-  BRICK MASONRY
-  EIFS W/ BRICK SCORE PATTERN, COLOR 1
-  EIFS W/ BRICK SCORE PATTERN, COLOR 2
-  BRICK ROWLOCK/SOLDIER COURSE
-  METAL PANEL
-  EIFS TRIM
-  FLAT EIFS NO SCORE PATTERN



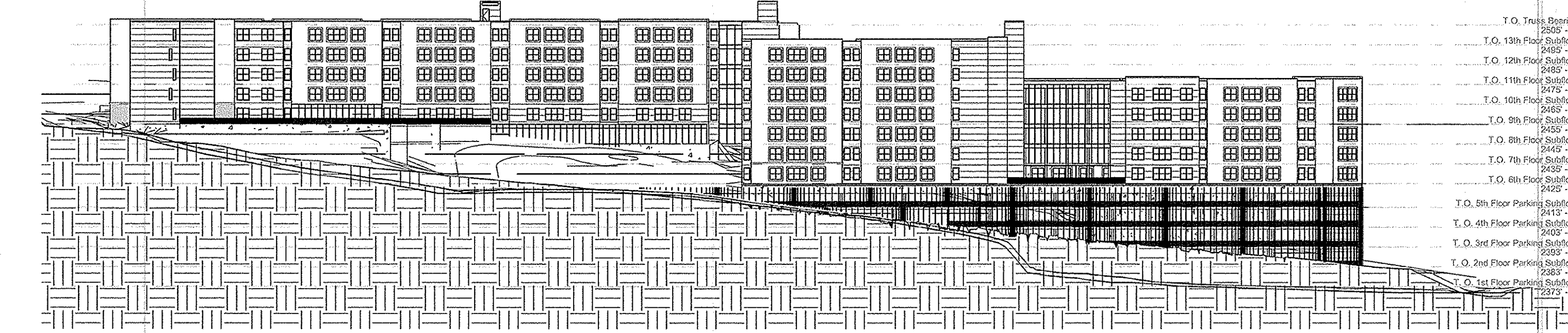
**4 WEST ELEVATION**  
1" = 50'-0"



**3 SOUTH ELEVATION**  
1" = 50'-0"



**2 EAST ELEVATION**  
1" = 50'-0"



**1 NORTH ELEVATION**  
1" = 50'-0"

PRINTS ISSUED  
08/08/2019 - CONDITIONAL USE PERMIT APPLICATION  
REVISIONS:

**rosemann & ASSOCIATES P.C.**  
ARCHITECTURE  
INTERIOR DESIGN  
ENGINEERING  
PLANNING

168 N. Meramec Avenue, Ste 200  
Cleyton, MO 63105  
p: 314.678.1448  
w: www.rosemann.com  
© 2019 Rosemann & Associates, P.C.

DENVER ■ KANSAS CITY ■ ST. LOUIS ■ ATLANTA

**ELEVATE AT PULLMAN**  
**PULLMAN, WA**

SHEET TITLE  
EXTERIOR ELEVATIONS

PROJECT NUMBER: 19027

SHEET NUMBER:

**A-200**

DRAWN BY: Author CHECKED BY: Checker

8/8/2019 2:17:55 PM C:\pds\mcf\mcf\mcf\19027 - Elevate at Pullman - RL - rosemann