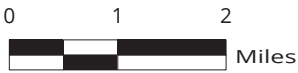
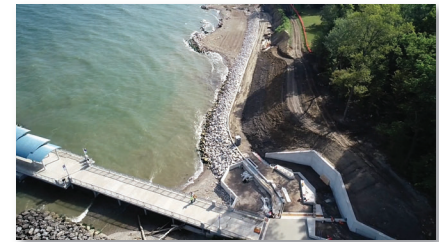


Cuyahoga County Lakefront Public Access Plan

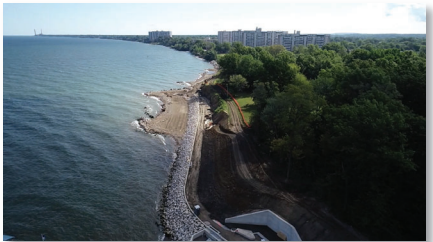
Focus Areas, with Cuyahoga Greenways TLCI Plan



- LEGEND**
- Focus Area
 - TLCI Study Area
 - Euclid Waterfront Project Area
 - ★ Lake Erie Water Trail Paddle Access Point
 - East Shoreway Relocation Proposal



Euclid Waterfront Improvement Plan



Cleveland Metroparks Lakefront Reservation Wildwood Park



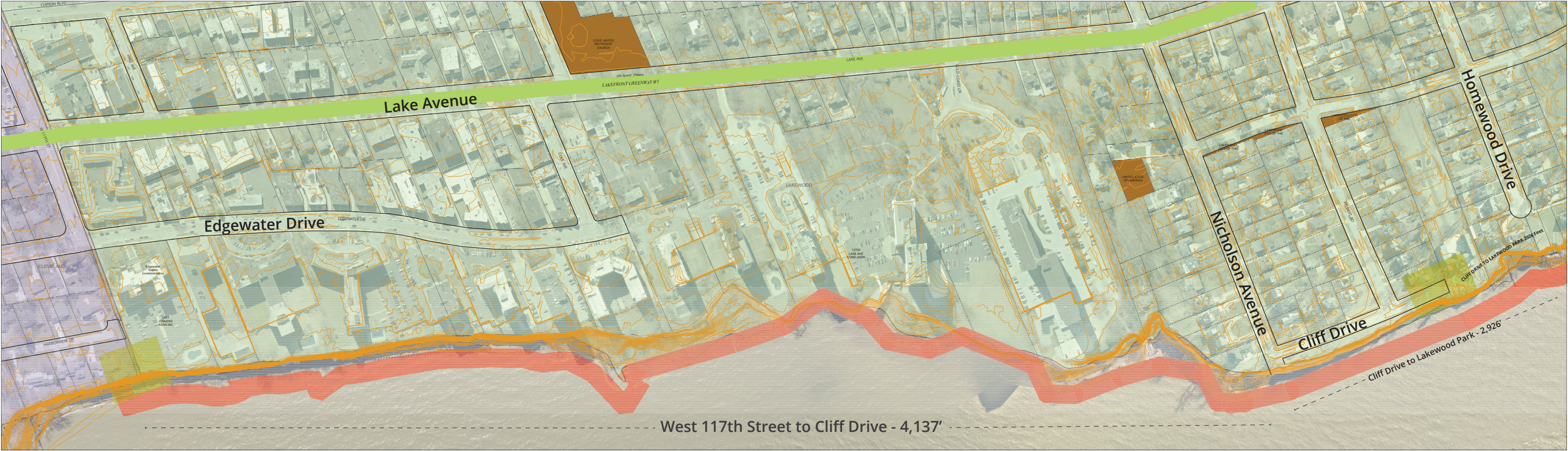
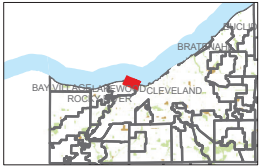
Lakewood Park & Solstice Steps



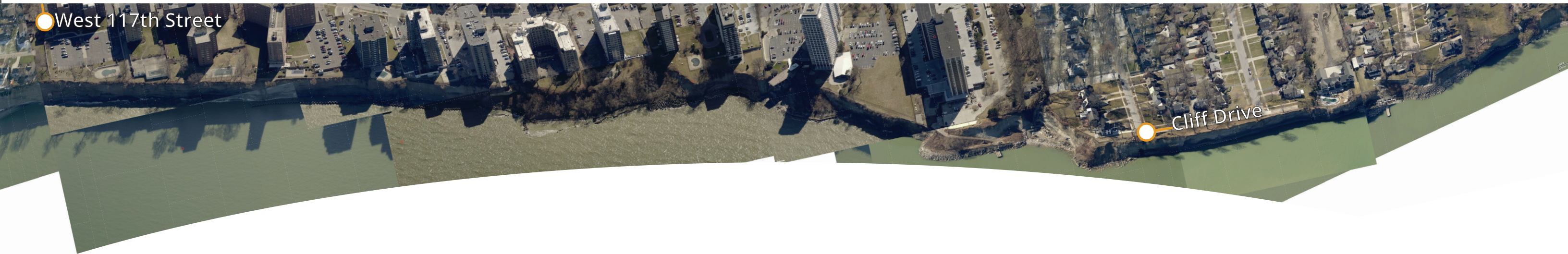
Rocky River Bradstreet Landing

Cuyahoga County Lakefront Public Access Plan

West 117th Street to Cliff Drive



- Regional Future Route
- Regional Off-Street: Existing
- Off-Street Future Route
- Tax Exempt
- HOA Properties
- All Others



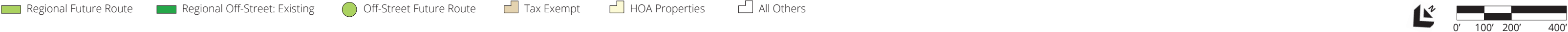
Cuyahoga County Lakefront Connection

Wildwood Park to Easterly Waste Water Treatment Plant



Cuyahoga County Lakefront Public Access Plan

East 185th Street to Wildwood Park

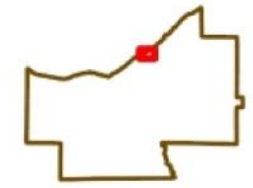




1,600 0 800 1,600 Feet

Projection:
WGS_1984_Web_Mercator_Auxiliary_Sphere

This map is a user generated static output from an Internet mapping site and is for reference only. Data layers that appear on this map may or may not be accurate, current, or otherwise reliable.
THIS MAP IS NOT TO BE USED FOR NAVIGATION



Date Created: 10/10/2019

Legend

1:9,600



Cuyahoga County
Enterprise GIS
PUTTING CUYAHOGA COUNTY ON THE MAP

CUYAHOGA GREENWAYS NETWORK

Overall Network

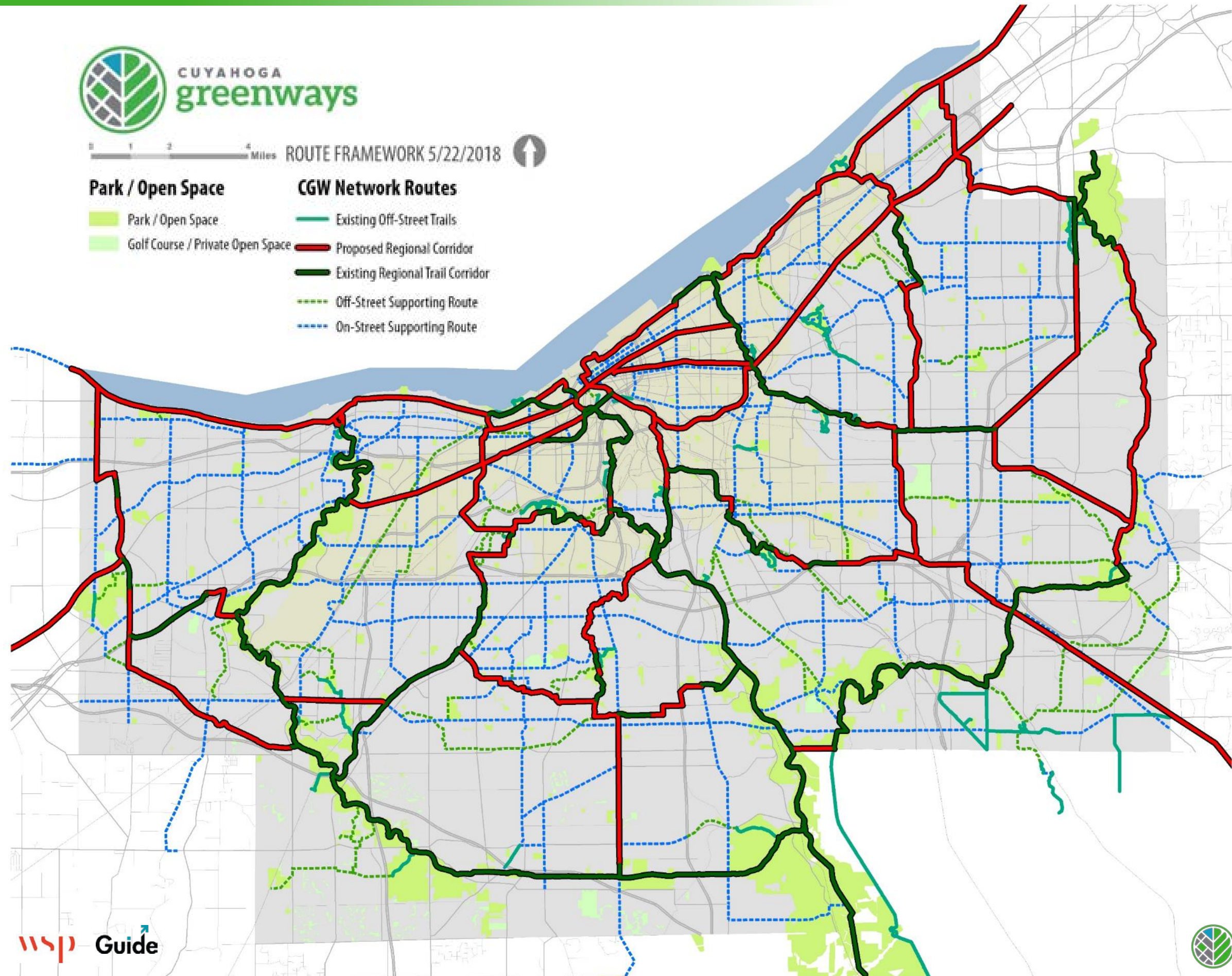
= 811 miles

Regional network

- 120 miles of existing trail
- 50 miles of proposed trail
- 125 miles of proposed on-street routes
- 295 miles total

Supporting network

- 58 miles of existing trail
- 104 miles of proposed trail
- 354 miles of proposed on-street routes
- 516 miles total



CUYAHOGA GREENWAYS DEFINED

DISTINCT ADVANTAGE

Cuyahoga Greenways is an **interconnected system** of greenways and urban trails that tie in with public transportation and parks to offer

PRODUCTS/SERVICES

recreational opportunities and **options for getting around** the county,

END BENEFIT

elevating the **health of the community** and the

AUDIENCE

individuals who call it home.