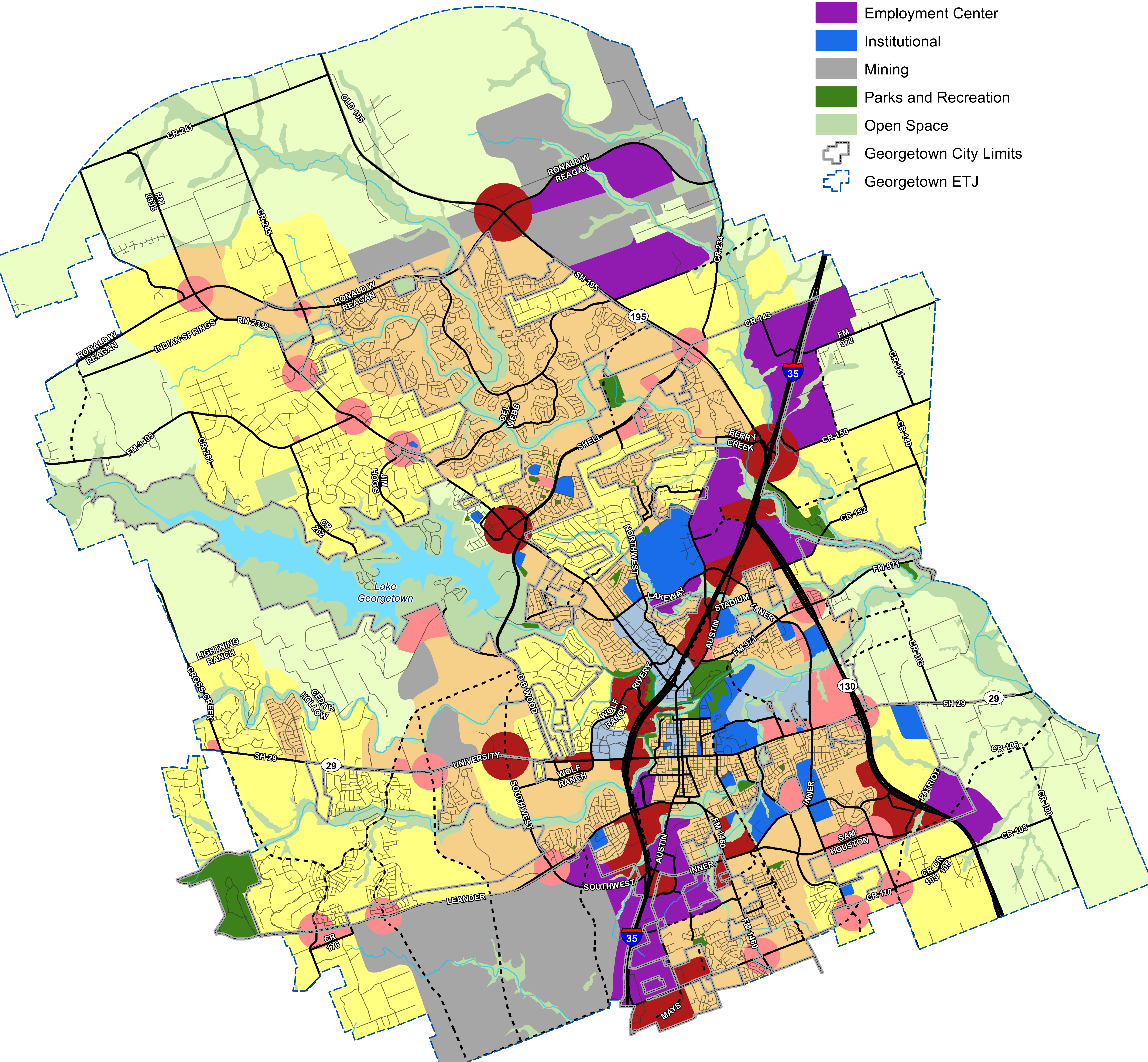
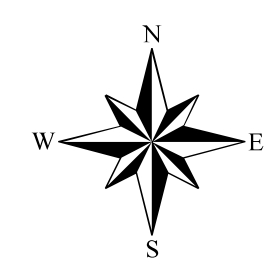


Land Uses

- Rural Residential
- Neighborhood
- Mixed Density Neighborhood
- Mixed Use Center
- Community Center
- Regional Center
- Employment Center
- Institutional
- Mining
- Parks and Recreation
- Open Space
- Georgetown City Limits
- Georgetown ETJ



Note:
 A comprehensive plan shall not constitute zoning regulations or establish zoning district boundaries.



0 0.5 1 2 Miles

