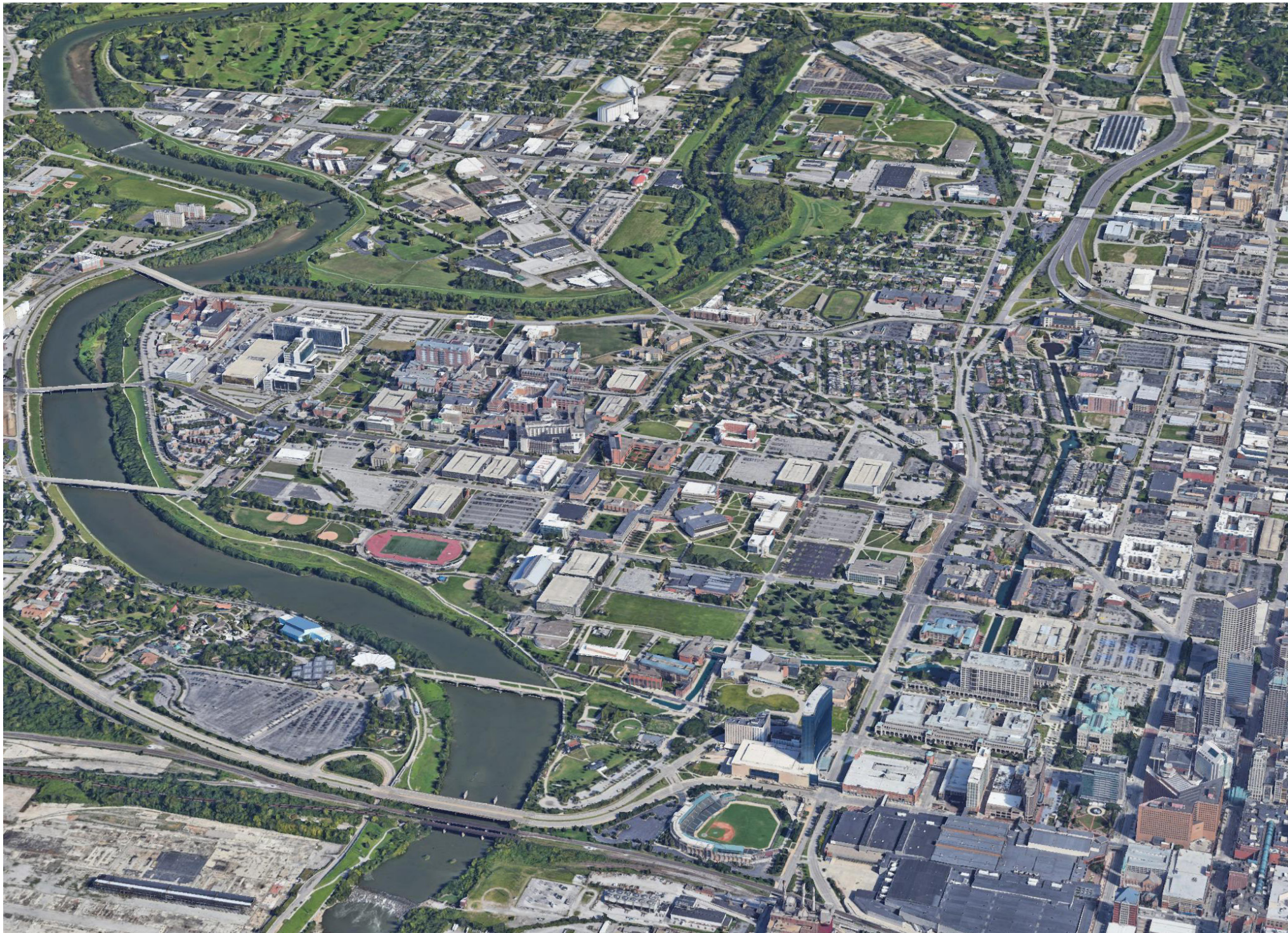




INDIANA UNIVERSITY - PURDUE UNIVERSITY INDIANAPOLIS

CAMPUS MASTER PLAN UPDATE EXECUTIVE BRIEF

FEBRUARY 2020



PREAMBLE

A TRADITION OF PLANNING

The 2020 Campus Master Plan Update (Update) is the composite of multiple planning efforts spanning nearly a decade. Its purpose is to support the mission and vision of Indiana University-Purdue University Indianapolis (IUPUI) and establish a framework for decision making and strategic development for the next 20 plus years.

For both Indiana University and IU Health, thoughtful planning has been a longstanding tradition. Throughout this continuum of change, one element has remained constant—the desire to remain the premier health sciences and urban research institution supporting the academic, research, and healthcare objectives for the state of Indiana.

CHANGES FROM 2012 MASTER PLAN

The 2012 IUPUI master plan addressed needed improvements to circulation, access, identity, as well as academic, student life, and residence life needs. The results of the plan have been a greatly improved campus which is more connected and vibrant.

This master plan update builds upon the guiding principles of the 2012 plan and addresses current needs to:

- Sites for future increase in Medical Research and Interdisciplinary Studies
- Reposition IU Health, School of Medicine, and Research to 16th and Senate
- Additional Student Housing development sites
- Additional Athletics and Recreation Facilities
- More renovation and reuse of legacy buildings



CAMPUS TODAY

PREPARING FOR CHANGE

PROGRAM MIGRATION

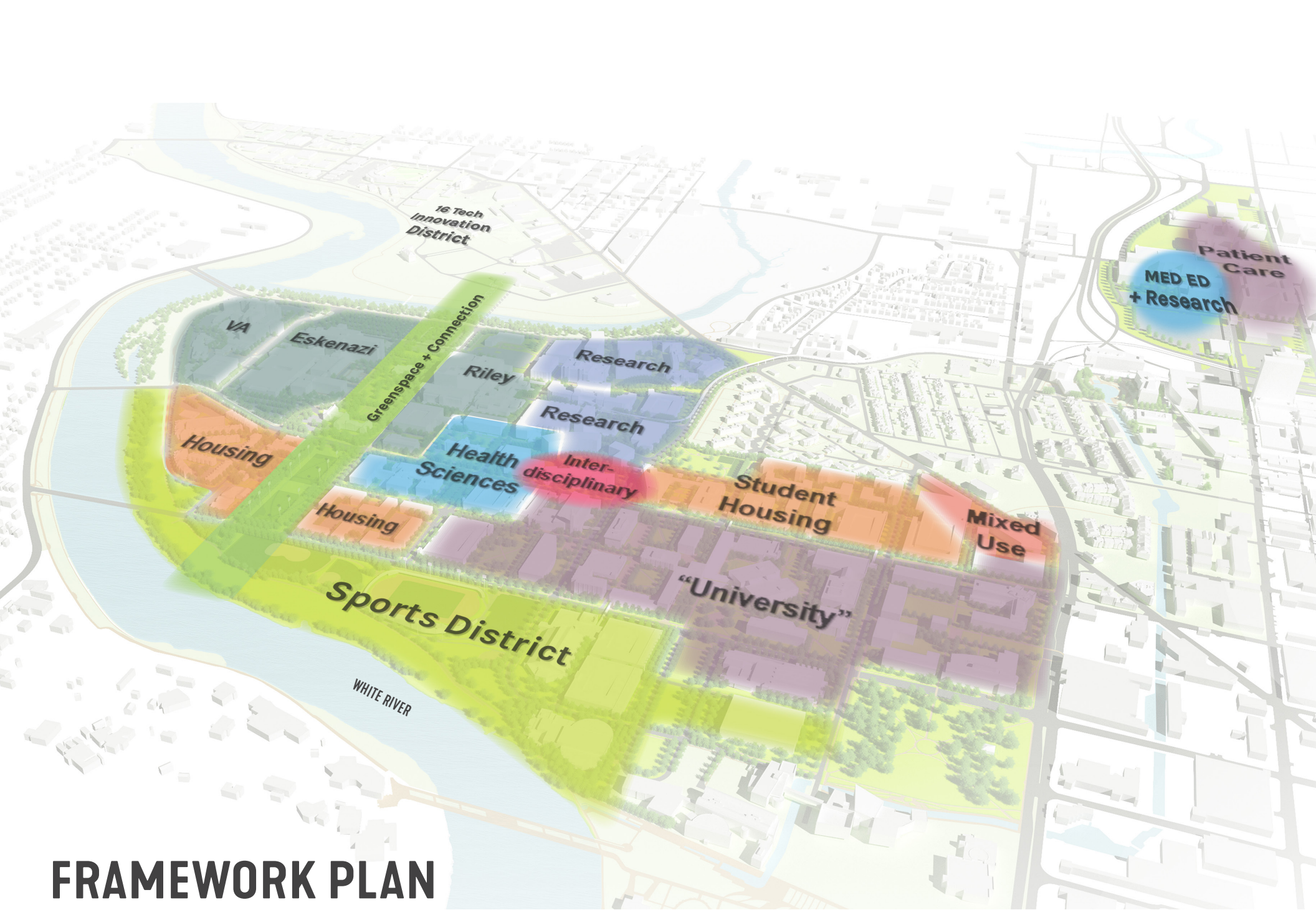
At its essence, the Update serves two functions. First, it has been developed to address traditional physical planning issues including land use, capacity, transportation, academic and research futures, and the student experience among other elements.

Second, and more importantly, this Update responds to new strategic opportunities for both Indiana University and IU Health. These include program migration from the IUPUI Campus to the IU Health Academic Health Campus (AHC) at 16th and Capitol in Indianapolis. The specific program migration opportunities relate to a new medical education future in conjunction with a significant investment in patient care at the IU Health campus at 16th and Capitol.

A CRITICAL TIME TO PLAN

Taken collectively, these changes effect IUPUI and IU Health in important and different ways. It is the intent of this executive brief to highlight the planning framework required to achieve these strategic objectives.

Moreover, the Update allows the institutions to reexamine facilities, consider shared resources, realign programmatic functions, and redefine connectivity between the academic, research, and clinical platforms. This Update offers a compelling vision that reflects the needs of faculty, staff, students, researchers, clinical healthcare employees, patients, and visitors.



FRAMEWORK PLAN

FRAMEWORK

The Framework Plan is the organizational diagram depicting functional relationships between land uses and institutional precincts. It is a flexible roadmap and should be simple, easily understood, and durable during changing administrative, political, and fiscal climates.

THE INTERDISCIPLINARY HUB

Contemporary learning is shifting towards integrated, collaborative, and experiential environments. The Update recommends a new and clear organizational focus with an interdisciplinary health sciences HUB at its core. The reuse of the Simon Cancer Center could serve as a confluence for undergraduate and graduate health science education. This location is not only central to the campus, but serves as the intersection of traditional academic offerings, research cores, housing, athletics, recreation, the downtown, and patient care facilities.

This framework, if executed over time, could serve to distinguish IUPUI nationally as a model for excellence and the integration of undergraduate and graduate education and research.

PLANNING THEMES

The Update is based on several planning themes. These have helped guide the process and should serve as a guidepost for strategic decision making. They include:

- Connect Campus Neighborhoods
- Engage the City
- Redefine the Public Realm
- Animate the Campus
- Integrate the Academic Health Campus



VISION



ACADEMIC AND RESEARCH

- A** Renovation of Health Sciences and Dunlap Building
- B** Renovation of Bryce/Ott Building
- C** Potential Reuse of Simon Cancer Center as Interdisciplinary Center
- D** Potential Research/Academic Buildings
- E** School of Medicine and Research Relocated to Academic Health Center

STUDENT LIFE

- F** Enhance Student Dining
- G** Opportunity for Additional Housing
- H** Sports Fieldhouse
- I** Convert Medical Library to Student Center
- J** Future Campus Facility

CAMPUS IMPROVEMENTS

- K** 16 Tech Bridge
- L** Phased Core Buildings Renovations
- M** Phased Core Campus Landscape Improvements
- N** Extension of Riley Hospital Drive and Open Space to New York Street
- O** Mixed-Use along Indiana Avenue
- P** University Boulevard Streetscape Improvements
- Q** New Campus Quad
- R** Determine Status of the University Hospital
- S** Determine Status of Emerson, Coleman and Gatch
- T** Gateway Parking Garage Expansion

PATIENT CARE

- U** University Hospital Relocated to Academic Health Center
- V** Cancer Center Relocated to Academic Health Center

PLAN OVERVIEW

IUPUI: CONNECTIVITY AND CHARACTER

Thematically, the Update strives to better link the campus at the building, the precinct, and at the campus scales. Further, it recommends incremental renovation of existing buildings with deliberate landscape and placemaking interventions to enhance the overall campus experience. With programs migrating to the AHC, the university can densify parts of the academic campus and patient care core and evaluate the long-term efficacy of several aging facilities. Finally, the university could leverage the programmatic intersection of undergraduate and graduate health sciences education through strategic facility reuse.

Additional planning objectives include:

- Integrate living, learning, and social environments to improve the student experience
- Develop additional housing and dining assets
- Enhance campus image through placemaking and civic realm improvements
- Create outdoor spaces that link academic programs to exterior environments





IU HEALTH: REPOSITION FOR THE FUTURE

Continuing changes in medical education, research, and healthcare delivery are driving the physical collocation of facilities at the 16th and Capitol AHC. The migration portions of the School of Medicine and patient care programs will require coordinated planning and resource sharing between IU and IU Health. As a result, it will demand solutions to maintain optimum strategic alignment and functional adjacencies between research, health sciences education, and patient care facilities.

Additional planning objectives include:

- Evaluate joint program needs and common priorities
- Provide a platform for collaborative decision making
- Strengthen health science and interprofessional education (IPE) between multiple locations
- Develop transportation solutions for educators, researchers, and clinicians accessing multiple locations
- Simplify visual identity and wayfinding between institutions



COMMUNITY: CONNECT DOWNTOWN TO THE CAMPUS

The historical development on the IUPUI campus land has a storied past featuring campus-neighborhood land use and connectivity challenges. Looking ahead, one of the key planning recommendations is to reconnect the northeastern quadrant of campus to downtown Indianapolis along West Street and Indiana Avenue. It will also be increasingly important to create a vibrant mixed-use neighborhood linking student and downtown environments. This precinct of campus, reinforced by the renovated Madam Walker Legacy Center, signals a new era in town-gown redevelopment and an exciting opportunity for the civic, private, and institutional collaboration.

Additional planning objectives include:

- Develop an integrated “campus town” including student and market rate housing, retail, hospitality, and office space
- Create destinations to capture patrons before and after cultural activities, campus events, and athletic venues
- Connect this precinct to the Cultural Trail and incentivize economic development



MINIMAL CAMPUS LANDSCAPE



LARGE CONCRETE PAVING



MONUMENTAL STAIRS AND OPEN LAWN



LIMITED CAMPUS ENTRY SPACE

CAMPUS TRANSFORMATION

BIG RETURNS FOR MODEST INVESTMENTS

IUPUI can be repositioned for the future through transformative building and landscape interventions. These proposed modification examples are intended to humanize the scale and planning foundation established by the original IUPUI plan of Edward Larrabee Barnes. In addition, these changes are intended to augment the architectural legacy and rescale the monumental open spaces between buildings. The Update recommends outdoor spatial connectivity, human scaled environments, and programmable civic and institutional event spaces.

Further, the Update introduces several enhancements intended to create significant impact for modest financial investments. The following pages highlight multiple improvements ranging from placemaking initiatives, adding tree canopy to the campus, creating first-floor building transparency, and introducing public realm improvements. Thematically, each of these investments refocus on student needs—celebrating the confluence of campus living, campus learning, and campus socialization.



UNDERUTILIZED SPACES



UNDERDEVELOPED CAMPUS EDGES

OPPORTUNITIES TO ANIMATE CORE CAMPUS



- 1 Taylor Hall Quad
- 2 New Amphitheater
- 3 Proposed Coffee Shop

TAYLOR HALL QUAD

The proposed Taylor Hall Quad intervention frames the space with canopy trees, improves campus lighting, and develops new active edges to the space in front of the buildings. This new edge could have collaboration stations, as well as loose tables and chairs which will allow students to work individually or socialize with their peers in groups. The central green could be retained for large events such as convocation, graduation, and festivals.



EXISTING



PROPOSED

CORE CAMPUS - NEW AMPHITHEATER

A possible revitalized quad on the south side of the library could be transformed by activating the monumental stairs into an amphitheater which could bring events to the core of campus, as well as provide a great sunny people watching space.

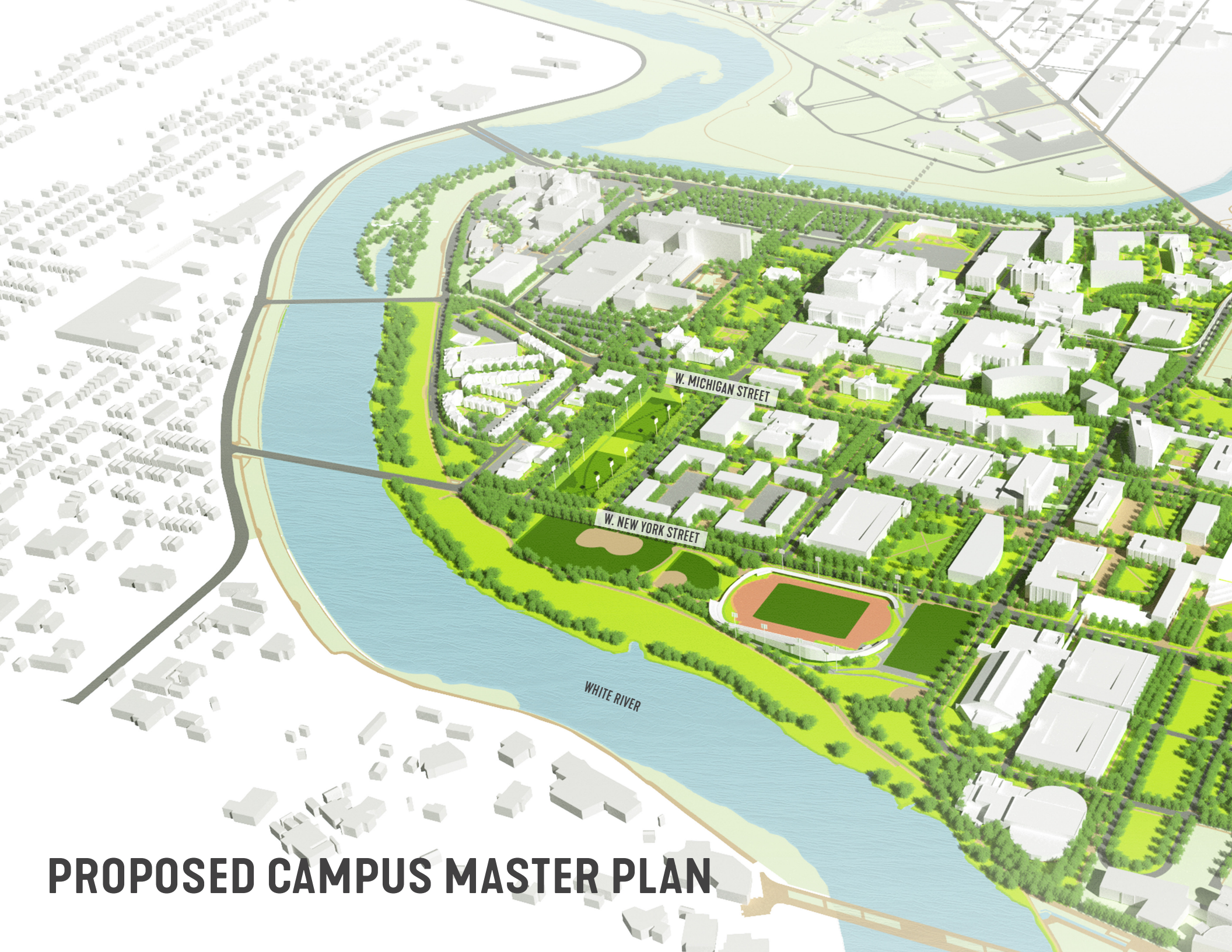
A new south entrance to the library could provide an important link to the space.



BREEZEWAY - PROPOSED COFFEE SHOP

There are two “breezeways” or “underpasses” on campus which can be reimaged by creating activity hubs, meeting space, and food/ coffee venues. The location of these hubs serve two adjacent quads each. The new glassy interventions could have strong indoor outdoor relationships with patio seating and landscaping engaging each quad.





PROPOSED CAMPUS MASTER PLAN



INDIANA AVENUE

N. WEST STREET

SMITHGROUP