

6-15 March

**British
Science
Week
2020**



British Science Week takes place between 6-15 March 2020 – join us for a ten-day celebration of science, technology, engineering and maths

FOR IMMEDIATE RELEASE

FESTIVAL OF CITIZEN SCIENCE **'Ignite your inner Scientist!'**

British Science Week 2020 (6 - 15 March) is a nationwide celebration of the best of British science, technology, engineering and maths. In conjunction with British Science Week 'Our Diverse Planet', Downside Community Centre are hosting a FREE 2-day 'Festival of Citizen Science' event on Friday 6th March + Friday 13th March 2020, from 11am until 8pm.

The 2 Day Event aims to inspire visitors to become Citizen Scientists and Scientists of the future with free 'hands-on' Interactive Science Displays, Workshops, Evening Interactive Presentations and 'Stargazing LIVE' in Isobel Park (weather permitting).

Exhibitor Interactive Displays 11am - 6.30pm:

Fossils of the Isle of Wight – Palaeontologist, Dinosaur Isle

Nature Table + Bug Habitat Creation - Hampshire and Isle of Wight Wildlife Trust

Create your own 'Toy Story' Animation – Animator, TimeSlide Studio Productions

Zooniverse 'Spotting Spider Monkeys' – Citizen Science IOW

3D Card Modelling Creativity Table – Model Maker, Citizen Science IOW

'Dino Run'...Real Live Dinosaurs in the Centre's Gardens! – Citizen Science IOW

Microplastics Sandbox– Citizen Science IOW

Wonder of Wildlife Gardens – over the 2 Day Event, the Centre's garden will be planted by visitors with wildlife friendly flowers to attract 'Bugs'n'Birds' – Pan Together

Interactive Workshops:

Erupting Volcanoes + Geology in a Jar Led by: Citizen Science Isle of Wight

The Science of Diving Led by: Marine Archaeologist, Shipwreck & Maritime Museum

Pan's Green Spaces Research Project Led by: Horticultural Ecologist, Hampshire and Isle of Wight Wildlife Trust

**Exploding Water Rockets!* Led by: Aviator, Wight Aviation Museum (*weather dependent)

The Science of Movie Magic Led by: Animator, TimeSlide Studio Productions

FREE Evening Events from 6 - 8pm include:

6 - 8pm Free 'Stargazing Live' in Isobel Park with *Fish'n'Chip Supper

Weather permitting, dust off your telescopes and bring your mobile phones or binoculars if you don't have a telescope. (*Buy and bring your fish'n'chips from 6pm onward)

Evening Interactive Science Presentations 7 - 8pm with *Fish'n'Chip Supper:

Friday 6th March 2020: 'How to Catch the Sun...'

Colin Palmer, Director of Wight Community Energy, explores the world of natural energy: What is energy? Why do we need it and how can we catch it without harming our home...the Earth.

Friday 13th March 2020: 'Twinkle Twinkle Little Star...The Secret of Star Patterns'

Aonghus von Rycker, Astrophysicist and Creator of Memosky® explores the link between Astronomy (the study of Stars and Planets), and Neuroscience (the study of the Brain and Nervous System), using Memosky®, a simple interactive Sky Constellation Card Game.

For more information, including workshop times, visit the Fun, Interactive Citizen Science Website: <http://citizenscienceiow.wixsite.com/events> or visit British Science Week website

ENDS celive.net/whats-on/



For more information, interview or to request photos or a photoshoot on the day, please contact:

Rachel Thomson, Downside Community Centre Manager
Tel: 01983 248170 email: enquiries@pantogether.org.uk

Or Neeve O'Flynn-Mundin, Event Co-ordinator
Mobile: 07392 542520 email: citizenscienceiow@gmail.com
Website for Citizen Science IOW: <http://citizenscienceiow.wixsite.com/events>
Find our events on the British Science Week website <https://sciencelive.net/whats-on/>

Notes to editor

Pan Together is a charity which runs the volunteer led Downside Community Centre and includes the Isobel Community Café. The Centre is hosting British Science Week 2020 Festival of Citizen Science here on the Isle of Wight, following a successful grant application to BSW20 funders.

Facebook: www.facebook.com/pantogether

About British Science Week

British Science Week (BSW) is a ten-day programme of science, technology, engineering and maths events and activities across the UK for people of all ages.

'British Science Week takes place between: 6-15 March 2020 Join us for a ten-day celebration of science, technology, engineering and maths. The theme for the 2020 activities is: 'Our diverse planet' 'We are pleased to announce that the theme for the British Science Week 2020 Activity Packs and Poster Competition is 'Our diverse planet'. Our activity packs will contain lots of activities on this theme, with anything from biological diversity and social diversity, to the diversity of knowledge and STEM careers. There are lots of ways to explore this theme, and we're very excited to work on what will certainly be another incredibly exciting British Science Week!'

British Science Association
www.britishscienceweek.org

Anyone can organise an event or activity, and the British Science Association helps organisers plan by providing free activity and support resources. We welcome and support any type of organiser, from schools to community groups, from parents to large organisations. The resulting programme of events is a hugely varied and eclectic mix.

This year, British Science Week (BSW) runs from 9-18 March and is a ten-day programme of science, technology, engineering and maths events and activities across the UK for people of all ages. The public can find out more by visiting www.britishscienceweek.org

About the British Science Association

The British Science Association (BSA) believes that science should be part of – rather than set apart from – society and culture, and is owned by the wider community. Our programmes encourage people of all ages and backgrounds to engage with science, become ambassadors for science, and ultimately to be empowered to challenge and influence British science - whether they work in science or not.

Established in 1831, the BSA is a registered charity that organises major initiatives across the UK, including British Science Week, the annual British Science Festival, regional and local events, the CREST Awards and other programmes for young people in schools and colleges.

The BSA also organises specific activities for professional science communicators, including a specialist conference and training. www.britishsociety.org

Interactive Displays



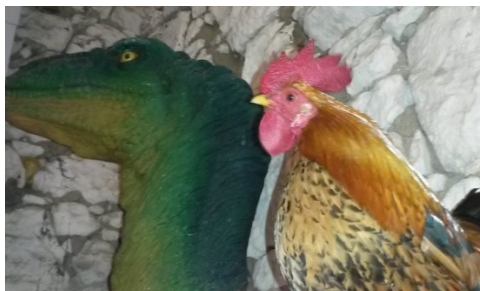
Nature Table + Bug Habitat Creation

Citizen Scientist Volunteers from HIWWT will guide you on the nature surrounding you and how to



Wonders of Wildlife Gardening

'Help Downside Community Centre's Wildlife Garden Grow and take home tins to create



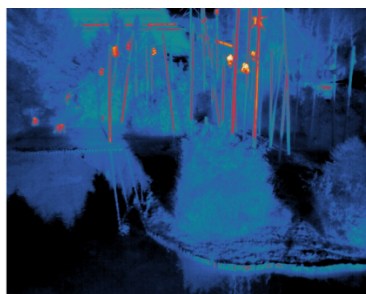
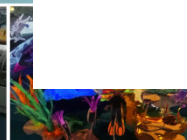
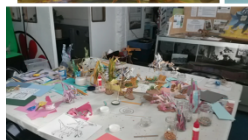
Dino Run!

How Brave would you be, if you came face-to-face with a Living Dinosaur?

Well, a flock of dinosaurs will be visiting the centre so you can get up close to discover that dinosaurs really do still exist to this very day...

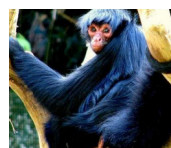


Create your own 3D Creative Card Models. Your models can also be animated to create your very own mini movie.



Zooniverse 'Spotting Spider Monkeys'

Become an Online Citizen Scientist! From the comfort of your own sofa, travel to Mexico's Rain Forest + help



WORKSHOPS:



It's Not Rocket Science... YES IT IS!

Explode Water Rockets with Citizen Scientists from Wight Aviation Museum in Isobel Park and discover the science of gravity, propellant, aerodynamics, design and FUNNNNNN!



The Science of Diving

The Shipwreck & Maritime Museum How can we hold our breath underwater for a very long time?

Discover all the amazing science behind diving and underwater archaeology. How



'The Science of Movie Magic how your eye tricks you!'

TimeSlide Studio presents a Mini Animation Studio for you to explore the Science of Movies. Bring along your favourite toys and create your own 'Toy

Free EVENING PRESENTATIONS with GUEST SPEAKERS:



GUEST SPEAKER

'How to Catch the Sun...'

Colin Palmer

Director

Wight Community Energy

Friday 6th March 2020

7-8pm

GUEST SPEAKER

'Twinkle Twinkle Little Star...
The Secret of Star Patterns'

Aonghus von Rycker

Astrophysicist + Creator of Memosky®

Friday 13th March 2020

7-8pm

SUPPORTED BY:



Pan T*gether

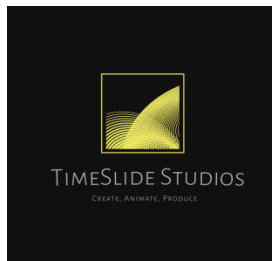
UK Research
and Innovation

unionlearn
from the TUC

BRITISH
SCIENCE
ASSOCIATION



BRITISH
SCIENCE
WEEK



Wight Community Energy



MEMOSKY®

