
PUBLIC SAFETY CAMERAS LOCATION ANALYSIS



FACILITIES & TRANSPORTATION MEETING
MARCH 4, 2020

ANALYSIS

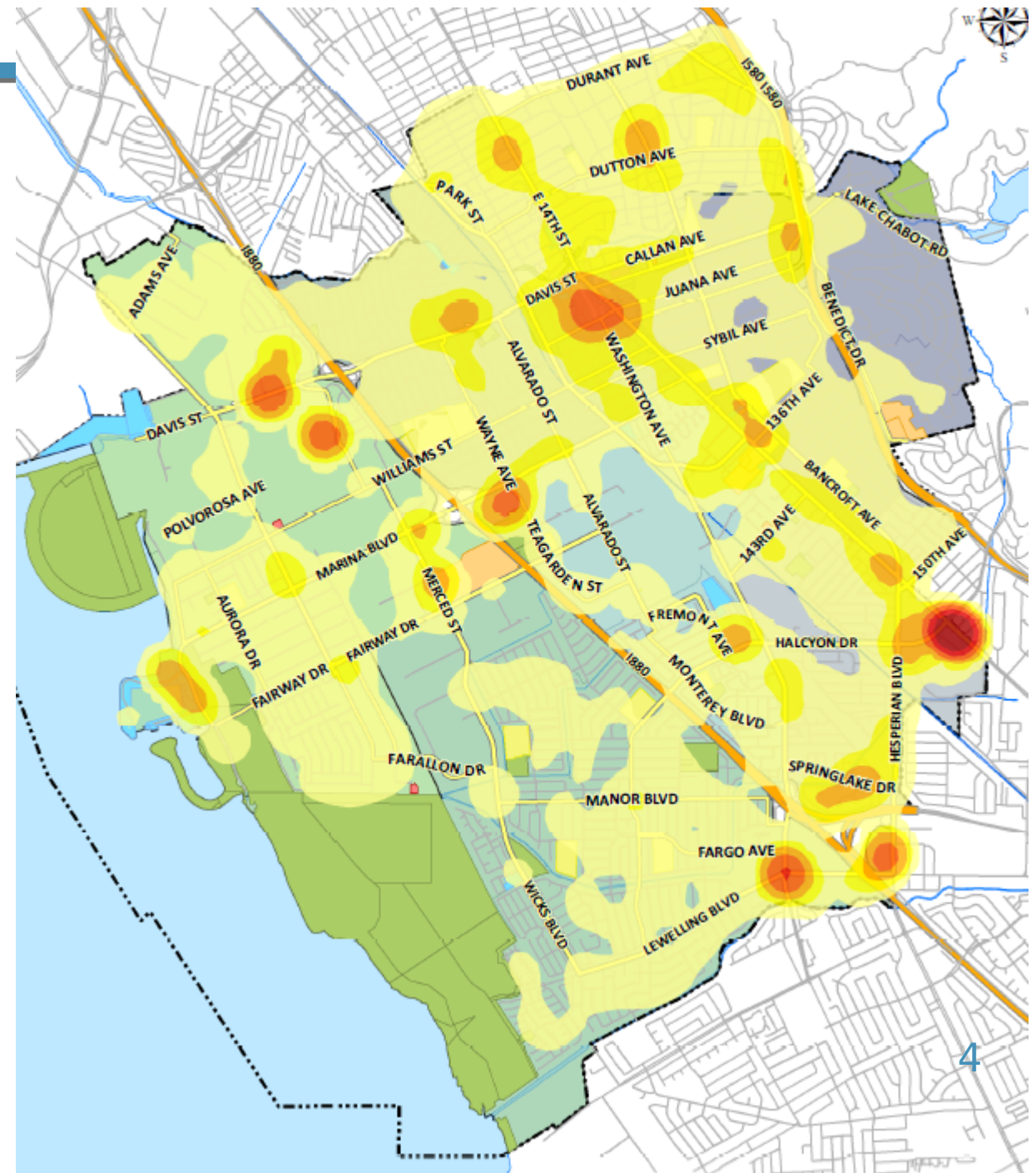
- Data driven approach
 - Crime data
 - Arrest data
 - Impact of regional crime
 - Deployment of resources
 - Investigative assistance
- Geography of city
 - Main thoroughfares
 - Ingress & egress
- Feasibility study Engineering & Traffic
 - Locations of Wifi accessibility

CRIME DATA

- FBI UCR (Universal Crime Reporting) Data
- Homicide, Rape, Robbery, Aggravated Assault, Burglary, Larceny, Motor Vehicle Theft & Arson
- 3 years of data
 - January 1, 2017- December 31, 2019
- Density map (Hot spot map)
 - Geographical representation of reported crime

Density Map UCR Crime Data Jan. 1, 2017- Dec. 31, 2019

- Density Map (Hot Spot Map)
- Helps to identify areas of clustered data to help discern areas of higher concentration (density)
- Allows us to visualize crime data which helps to see areas of higher reports of crime reported under UCR
 - Areas with no data points are transparent
 - Areas with small number of incidents are shaded lightly and becomes darker as the density of data points increases
 - Red and orange are higher levels of density (reported crime)



ARREST DATA

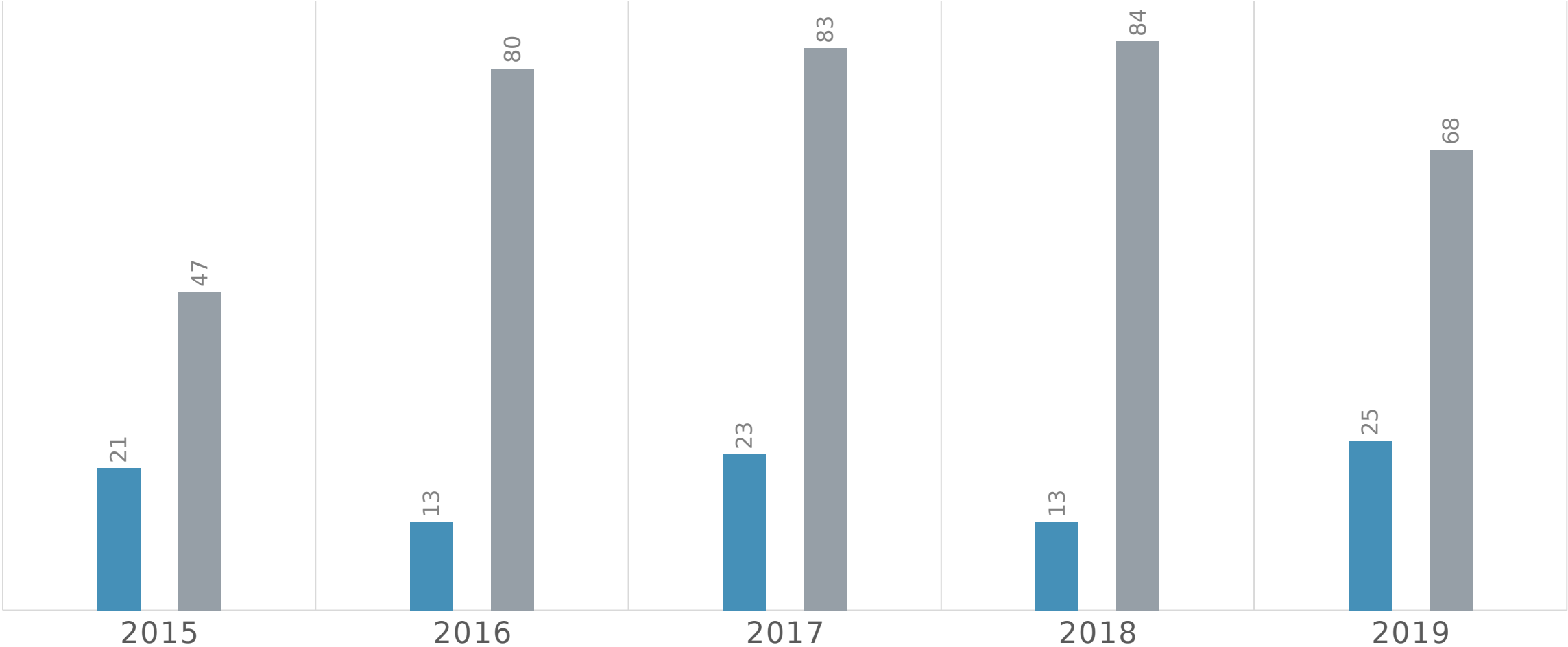
- Arrest data for Robbery & Burglary
 - Regional & Community Impact
- Analyzed to determine where majority of arrestees are from
 - San Leandro residents vs. Non San Leandro resident
 - Deployment of resources

Findings:

- Over 5 year period only 20% of arrestees listed San Leandro as city of residence at time of arrest
- Likely suspects will have to flee the city after committing crime via main thoroughfare

Robbery Arrest data

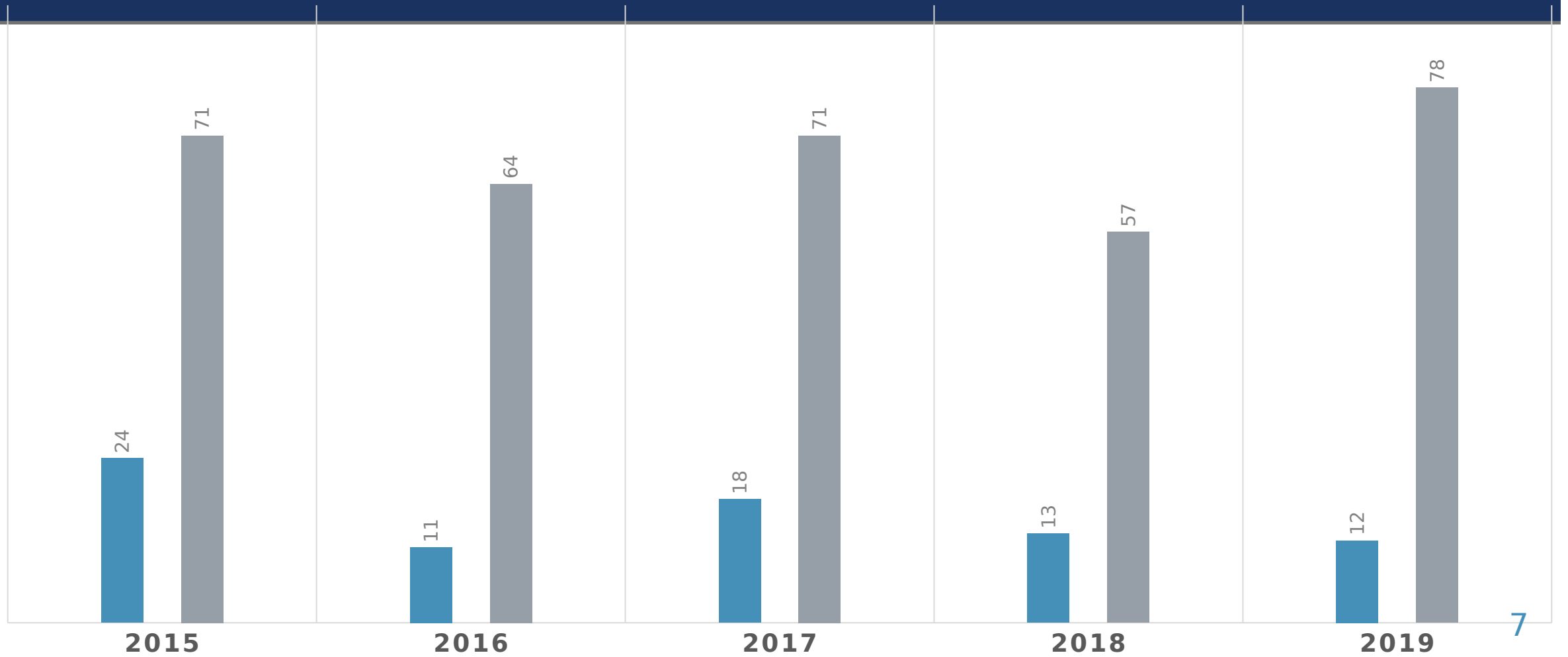
■ Robbery SL Resident ■ Robbery Non-SL Resident



Robbery data based upon arrestees for UCR crime code 120

Burglary Arrest data

■ Burglary SL Resident ■ Burglary Non-SL Resident



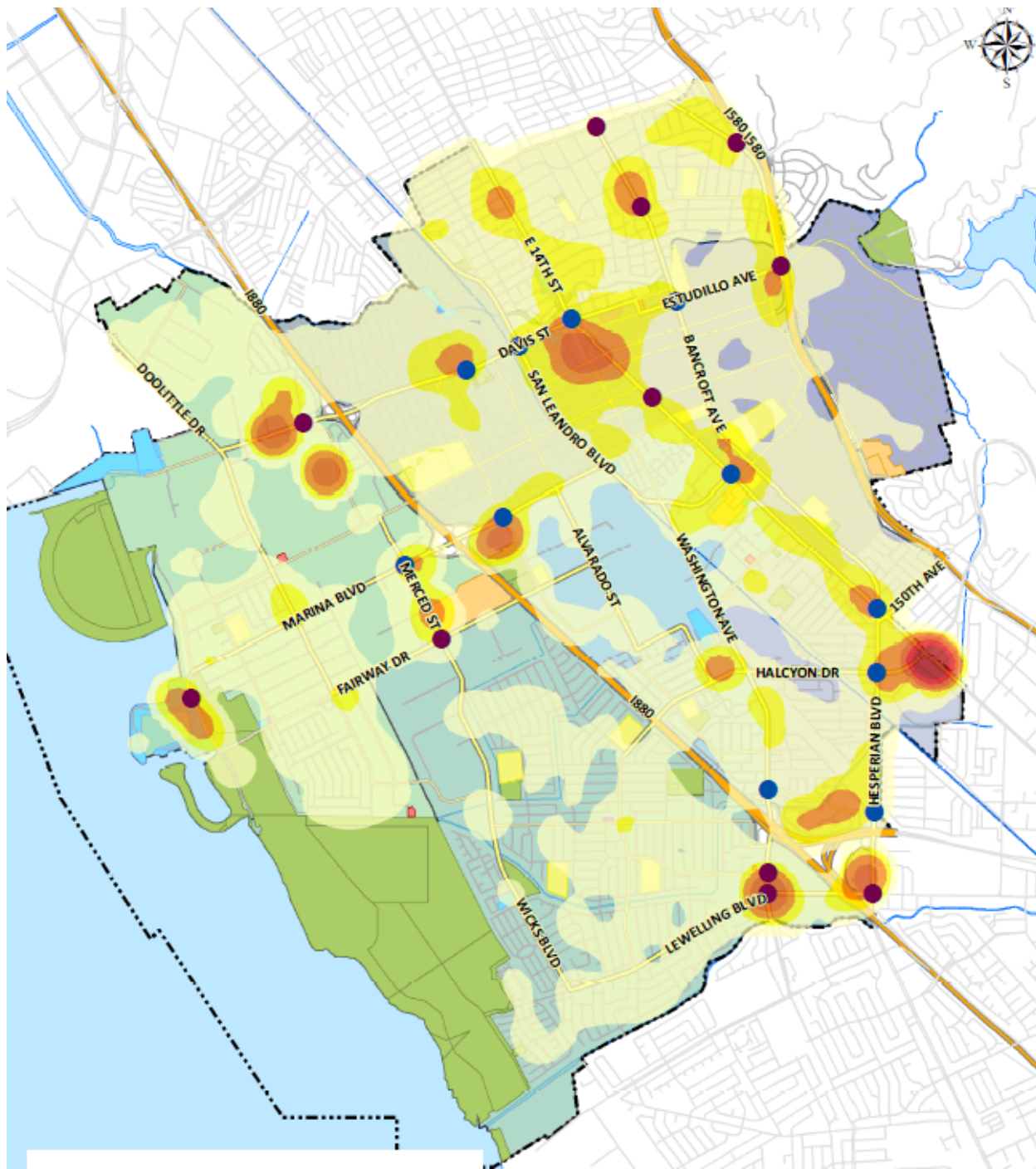
Burglary data based upon arrestees for UCR crime code 220

INVESTIGATIVE ASSISTANCE

Locations where major investigations have taken place where cameras were crucial in solving cases

- Kidnapping
- Rape
 - BART PD cameras crucial in helping solving a stranger case
- Homicides
- Shootings
- Robberies
 - Series
 - Home invasion robberies

Proposed Public Safety Ten (10) Camera Locations



Ranking	Location
1	Durant Ave. & Bancroft Ave. OR Bancroft Ave. & Dutton Ave.
2	MacArthur Blvd. & Superior Ave.
3	E 14 th St. & Sybil Ave.
4	Monarch Bay Dr. & Mulford Point Dr.
5	Fargo Ave. & Washington Ave.
6	Estudillo St. & MacArthur Blvd.
7	Lewelling Blvd. & Hesperian Blvd.
8	Washington Ave & Hesperian Blvd.
9	Fairway St. & Merced St.
10	Davis St. & Timothy St (Westgate Parking lot)

- Phase 1 - Traffic & Engineering Cameras (upgrade in process)
- Phase 2 - Proposed camera locations

TECHNICAL ANALYSIS & RECOMMENDATIONS

Connectivity And Integration

- 3 Sites are serviceable by existing City Fiber;
- 7 Sites are recommended to use High Speed Wireless Connectivity utilizing County Tower;
- Cameras will be fully integrated into City Video Management Sever (VMS) installed at City Hall;
- Governed by under Administrative Use Policy

CITY OF SAN LEANDRO CAMERA USE POLICY

- In 2019 the City Manager executed an Administrative Policy #2019-01;
- Video will be retained for a maximum of fifteen (15) days, unless part of a civil or criminal investigation;
- Access shall be limited to staff with immediate and primary needs, will be logged, and must be approved by Department Heads;
- Recordings and images **will not be actively monitored** and will only be checked in the event the City has a need, or probable cause, or reasonable suspicion to review recordings;
- Monitoring individuals based on protected class or characteristics including but not limited to race, gender, sexual orientation, disability or other protected classification is strictly prohibited.

PHASE 2 BUDGET ESTIMATES

- Budget Target Total: Approx. \$124k One-time cost; Approx. \$10k/yr annual maintenance
- Wireless Infrastructure Build Out:
 - High Speed Wireless Communication Service to 7 Locations (3 Locations served by existing City Fiber)
 - Camera Installation at Ten Intersections
 - Cost: Approx. \$52,000
- Camera Integration with Video Management Server:
 - Camera Configuration Services
 - Cost: Approx. \$52,000
- Traffic Operations Center Network Upgrades*
 - Upgrade Switches from 100Mhz to 1Gbps (note: includes Phase 1 cameras)
 - Cost: Approx. \$20,000
 - *Complete Upgrade of TOC Network Infrastructure Recommended in Future

PHASE 2 BUDGET SOURCES

- IMS 688 Fund Balance:
 - \$62,000
- SLPD Frontline (SLESF) Fund 150 Fund Balance
 - \$62,000
- Annual Maintenance
 - IT Operating Budget; \$10,000/yr

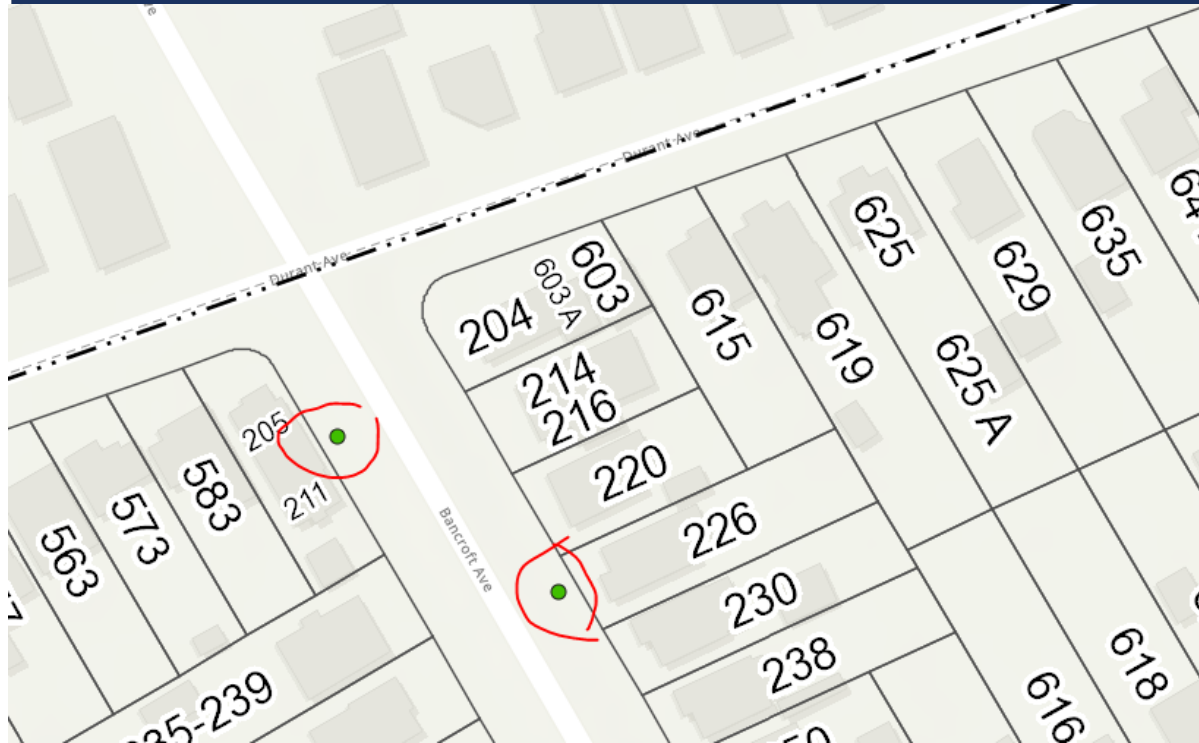


APPENDIX

TECHNICAL DESIGN RECOMMENDATIONS

NOTE: PRELIMINARY ANALYSIS TO EVALUTAE VIABILITY OF
CONNECTIVITY OPTIONS AT PROPOSED LOCATION

1. DURANT & BANCROFT



Notes: No Traffic intersection; Line of site from City light poles

Connection Recommended: Wireless

2. SUPERIOR & MACARTHUR

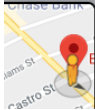


Notes: No Traffic intersection; Limited Line of site from City light pole; Potential tree foliage

Connection Recommended: Wireless, may need pole extension or cellular; Roundabout new pole



3. E 14TH & SYBIL



Notes: CalTrans intersection; No fiber, but splice box at parcel 1877; great line of site to County Tower

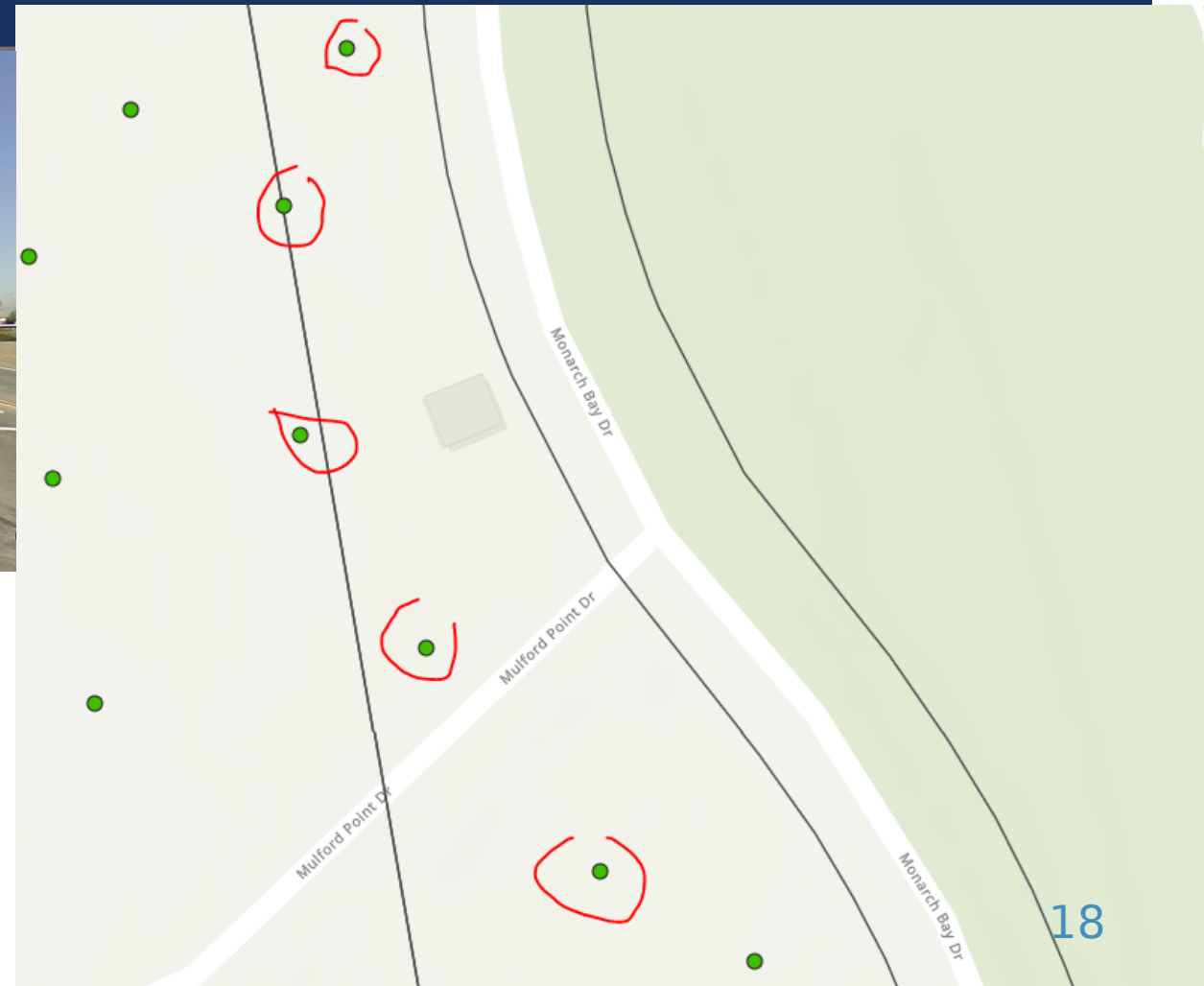
Connection Recommended: Wireless

4. MONARCH & MULFORD POINT



Notes: Line of site from City double mast Poles; a little off the intersection

Connection Recommended: Wireless



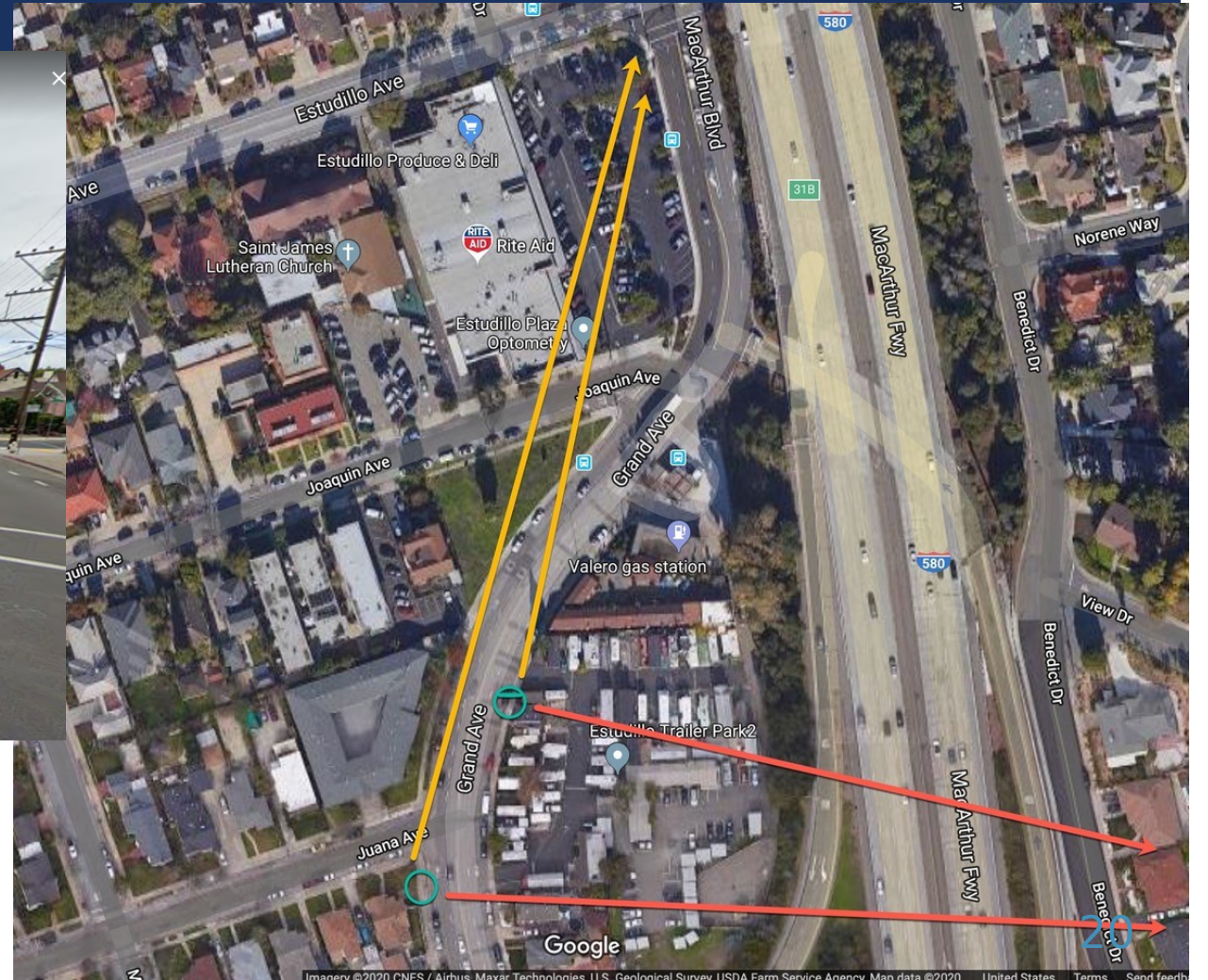
5. FARGO & WASHINGTON



Notes: City fiber, switch in traffic cabinet; Cat6 cable needs to be pulled to City Pole

Connection Recommended: Fiber

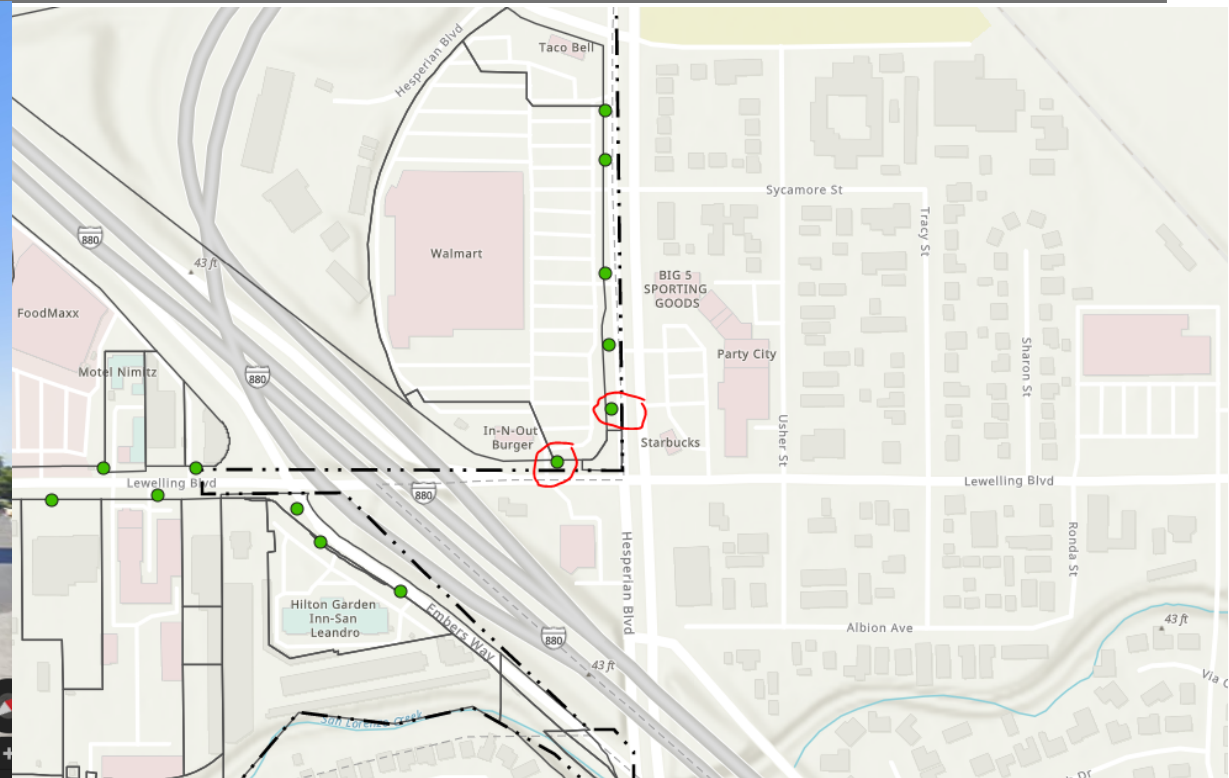
6. ESTUDILLO & MACARTHUR



Notes: Traffic intersection, No Fiber; Line of site from Juana / Valero City Poles

Connection Recommended: Wireless w/ Relay from Valero Pole OR camera at Valero Pole

7. LEWELLING & HESPERIAN



Notes: Excellent Line of Site on Walmart side from City Poles; a little off the intersection

Connection Recommended: Wireless

8. WASHINGTON & LEWELLING



Notes: City fiber, switch in traffic cabinet; Cat6 cable needs to be pulled to City Pole

Connection Recommended: Fiber

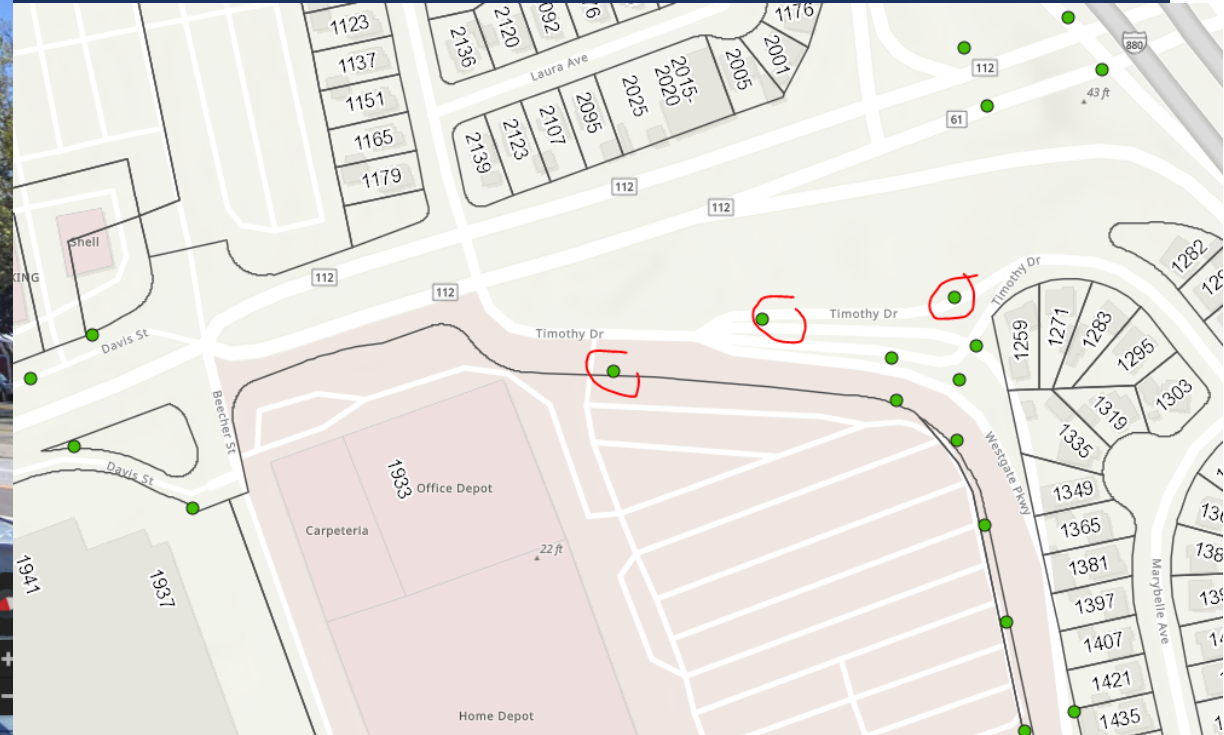
9. FAIRWAY & MERCED



Notes: City fiber, switch in traffic cabinet; Cat6 cable needs to be pulled to City Pole

Connection Recommended: Fiber

10. TIMOTHY & DAVIS



Notes: CalTrans intersection, no City poles on Davis nearby;
Poles on Timothy towards Westgate and fiber at Westgate &
Timothy intersection

Connection Recommended: Wireless from Timothy