

COVID-19 BASIC EDUCATION SECTOR PLAN

**MR HM MWELI
DIRECTOR-GENERAL**

DEPARTMENT OF BASIC EDUCATION

DRAFT, CONFIDENTIAL AND NOT
TO BE CIRCULATED



PRESENTATION OUTLINE

1. Purpose
2. Introduction
3. International Experience
4. Size and Shape of the Sector
5. Lockdown Regulations
6. Pillars of the Sector Plan
7. RSA Risk Adjusted Strategy
8. Conclusion

PURPOSE

To present the **COVID-19 Basic Education Sector Plan** to the Portfolio Committee on Basic Education and Select Committee on Education and Technology, Sports, Arts and Culture

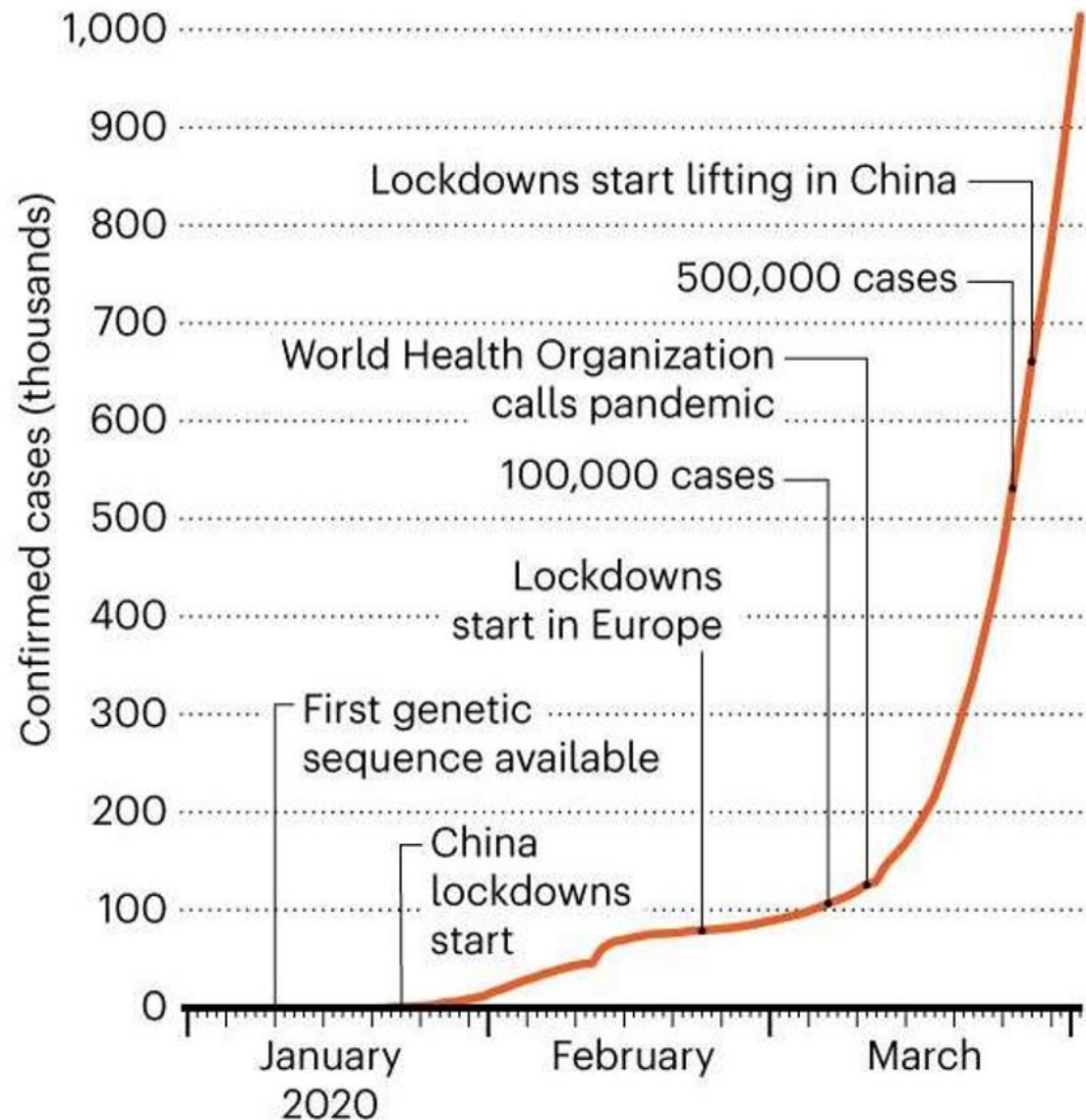
INTRODUCTION

DRAFT, CONFIDENTIAL AND NOT
TO BE CIRCULATED



THE FIRST MILLION CASES OF COVID-19

Wuhan seafood market



Data correct as of 3 April 2020 Source: Nature 2020 ⁵ ©nature

COVID-19



COVID-19...



COVID-19...



THE RISK OF DOING NOTHING...

...THIS IS NOT AN OPTION

We face certain death – but left with the only choice to choose our cause of death...

We die from the virus

OR

We die from poverty & hunger

INTERNATIONAL EXPERIENCE

DRAFT, CONFIDENTIAL AND NOT
TO BE CIRCULATED



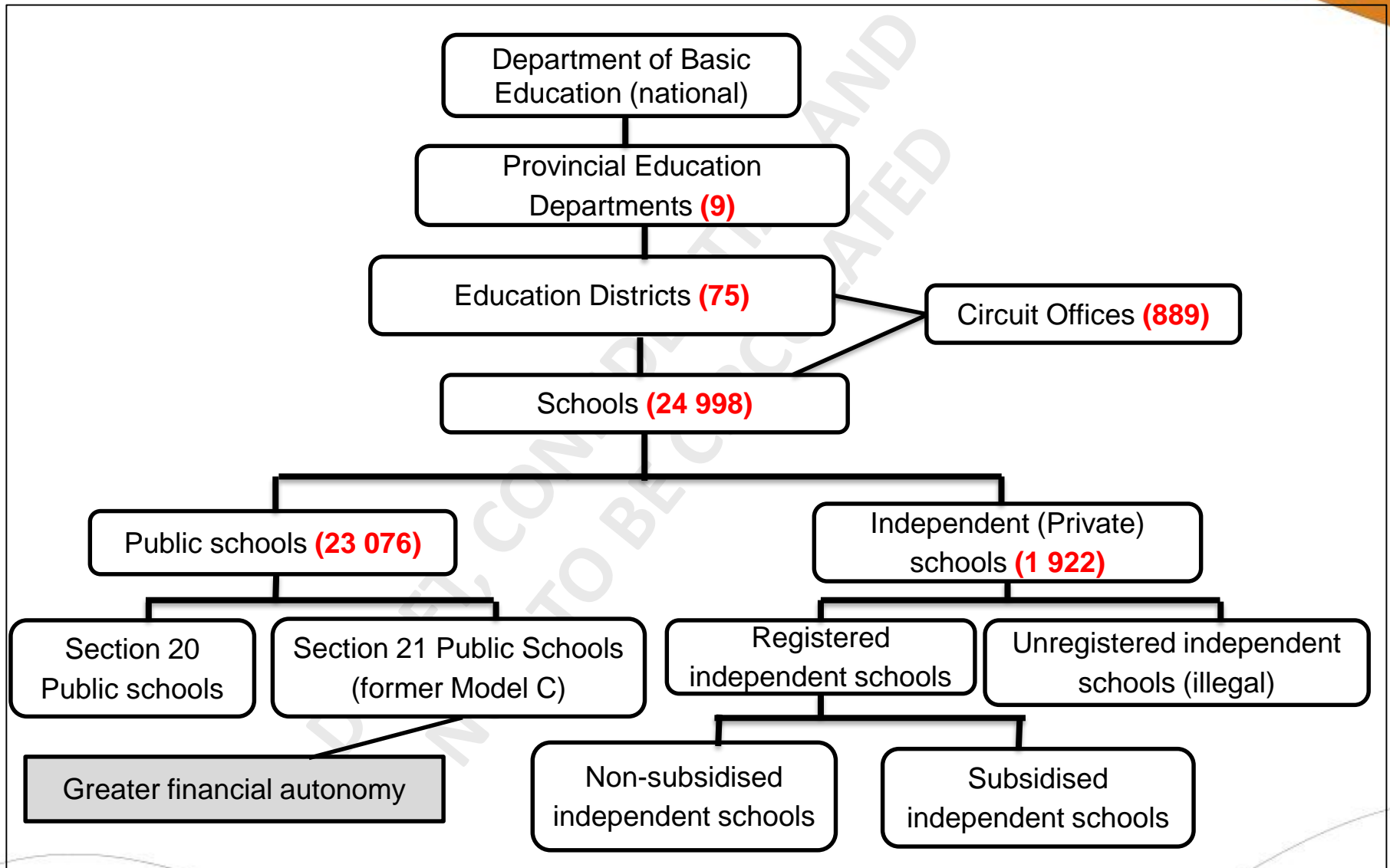
SOME INTERNATIONAL EXPERIENCE

- **Taiwan** closed schools only for two weeks, and resumed after that. Introduced strict **social distancing** measures. **Temperature screening** in the morning, compulsory **face masks** and regular **hand washing** and **plastic dividers** on desks.
- **China closed all schools** between 20 January and 6 February 2020. Returned different grades in phases with grades 9 and 12 first. Compulsory **cloth masks** and **temperature screening**. **Hand sanitizers** available.
- **Denmark** opened ECD centres and primary schools to Grade 5. No face mask requirement. But **separate desks to 1m**. Regular **hand washing** and hand **sanitizers** available. **Cordon off the playground** to limit interaction. And limit playgroups. **Stagger break times**. Very **limited uptake though** as most parents refuse to send children to school. Only into its second week though.
- **Singapore did not close schools**. Have had a **recent spike** in new infections. Announced last week that **all schools and universities to be closed** from 20 April. Some schools and **ECD centres to remain open** for children of essential workers.

THE SIZE AND SHAPE OF BASIC EDUCATION SECTOR



BASIC EDUCATION SECTOR



NUMBER OF LEARNERS, EDUCATORS AND SCHOOLS IN THE ORDINARY SCHOOL SECTOR BY PROVINCE IN 2019

Province	Public			Independent			Public and Independent					
	Learners	Educators	Schools	Learners	Educators	Schools	Learners	As % of National Total	Educators	As % of National Total	Schools	As % of National Total
Eastern Cape	1 770 289	60 462	5 205	73 525	3 811	225	1 843 814	14.1	64 273	14.4	5 430	21.7
Free State	697 334	22 978	1 085	18 746	1 049	71	716 080	5.5	24 027	5.4	1 156	4.6
Gauteng	2 151 095	70 344	2 071	296 282	17 384	742	2 447 377	18.8	87 728	19.7	2 813	11.3
KwaZulu-Natal	2 784 917	93 648	5 821	59 847	3 915	215	2 844 764	21.8	97 563	21.9	6 036	24.1
Limpopo	1 687 376	50 916	3 773	66 443	3 103	158	1 753 819	13.4	54 019	12.1	3 931	15.7
Mpumalanga	1 067 583	35 316	1 679	27 358	1 663	116	1 094 941	8.4	36 979	8.3	1 795	7.2
Northern Cape	293 315	10 185	546	5 573	468	37	298 888	2.3	10 653	2.4	583	2.3
North West	829 336	26 564	1 451	23 253	1 448	85	852 589	6.5	28 012	6.3	1 536	6.1
Western Cape	1 127 510	36 588	1 445	61 416	5 015	273	1 188 926	9.1	41 603	9.4	1 718	6.9
South Africa	12 408 755	407 001	23 076	632 443	37 856	1 922	13 041 198	100.	444 857	100.	24 998	100.0

EDUCATION STATISTICS AT A GLANCE, 2019

Size of the Schooling System:

Learners: **12 408 755**

Educators: **407 001**

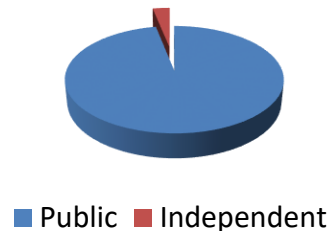
Schools: **23 076**

Sector	Learners	Educators	Schools
Public	12 408 755	407 001	23 076
Independent	632 443	37 856	1 922
Total	13 041 198	444 857	24 998

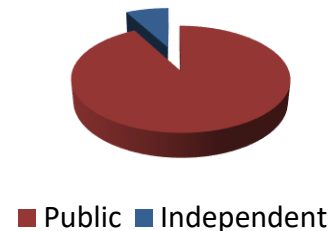
Official languages

English, isiZulu, isiXhosa, isiNdebele, Afrikaans, siSwati, Sepedi, Sesotho, Setswana, Tshivenda, Xitsonga, South African Sign Language

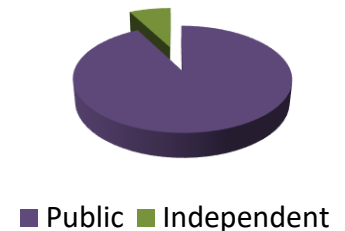
Learners



Educators



Schools



LOCKDOWN REGULATIONS

DRAFT, CONFIDENTIAL AND NOT
TO BE CIRCULATED



LOCKDOWN REGULATIONS

- Aims to **stop the spread of the COVID -19 virus** and minimize the infections.
- Anyone found in **violation** of the regulations will be **fined or imprisoned**
- No person **confirmed or suspected of virus** may refuse medical examination, treatment, isolation or quarantine
- Movement has been **restricted**, only if a close family member dies can you travel to the funeral and only 50 may attend
- No **alcohol** and **cigarettes** sold
- Schools closed until **further notice** after the lockdown.
- **Fake news** a crime.
- No **public gatherings** of more than 100 people
- **Emergency procurement policy** for COVID-19 to assist all departments
- Amendments introduced to **relax transport rules for taxis, essentials for babies** and **movement of children** of divorced couples with shared custody.

PILLARS OF THE SECTOR PLAN

DRAFT, CONFIDENTIAL AND NOT
TO BE CIRCULATED



GUIDELINES ON SOCIAL DISTANCING

The following are **guidelines on social distancing**:

- Physical distances in classrooms includes **not more than 2 learners** sharing desks.
- No **hugging, handshaking** and **direct contact** must be avoided.
- **Cloth masks** to be worn by learners and teachers at all times.
- **No mass public events.** All sports matches, choral practices and festivals, Eistedfods are not permitted.
- **Extra classes** should be arranged in **small groups** that maintain social distancing.

SOCIAL DISTANCING IMPLICATIONS

Infrastructure and Furniture

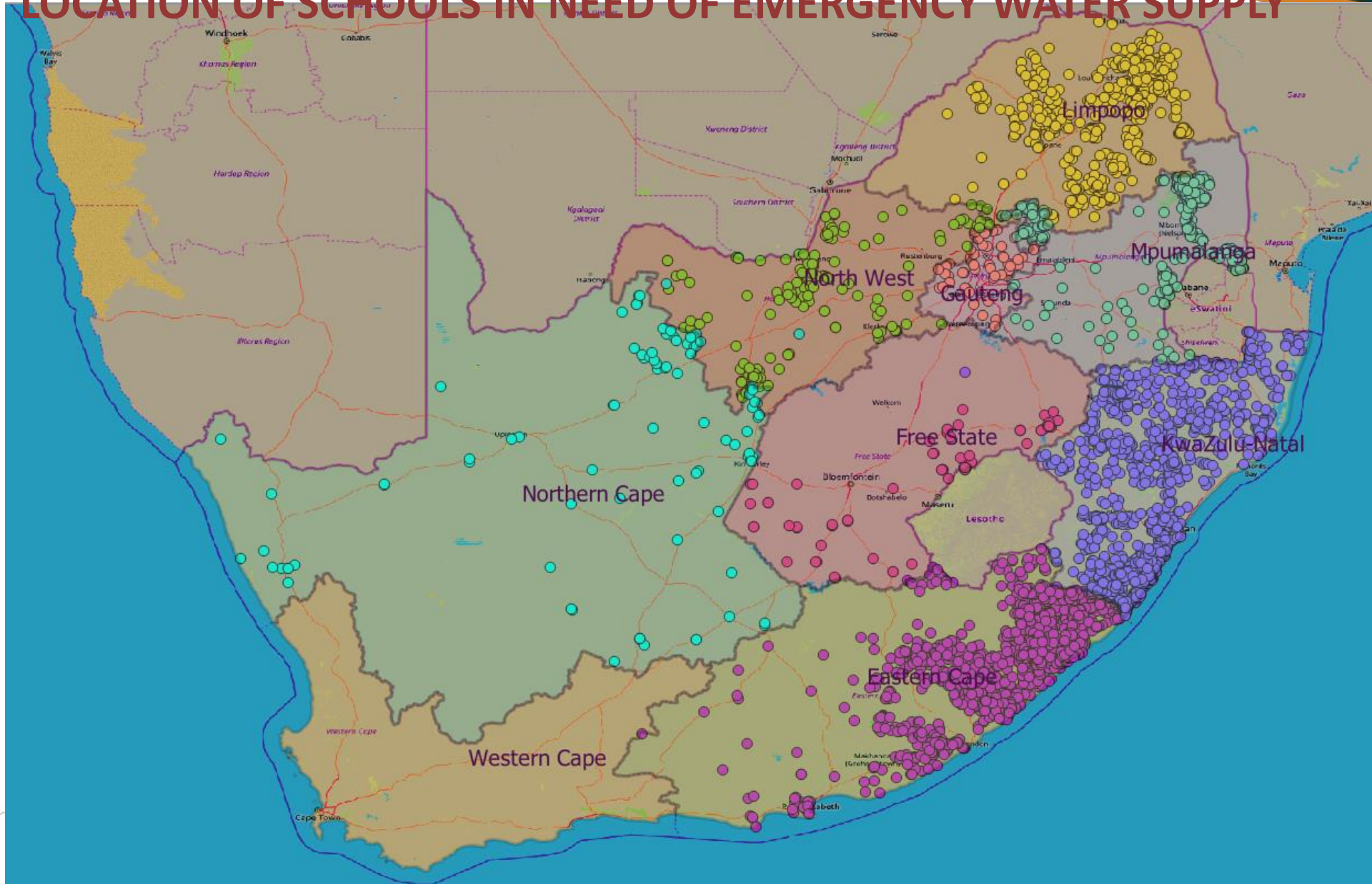
- Sanitize classroom **prior** to start of school day
- Sanitize hands on **entering** of classroom
- Limit **movement** of learners between classes
- No **clustering** of desks in classrooms

Transport

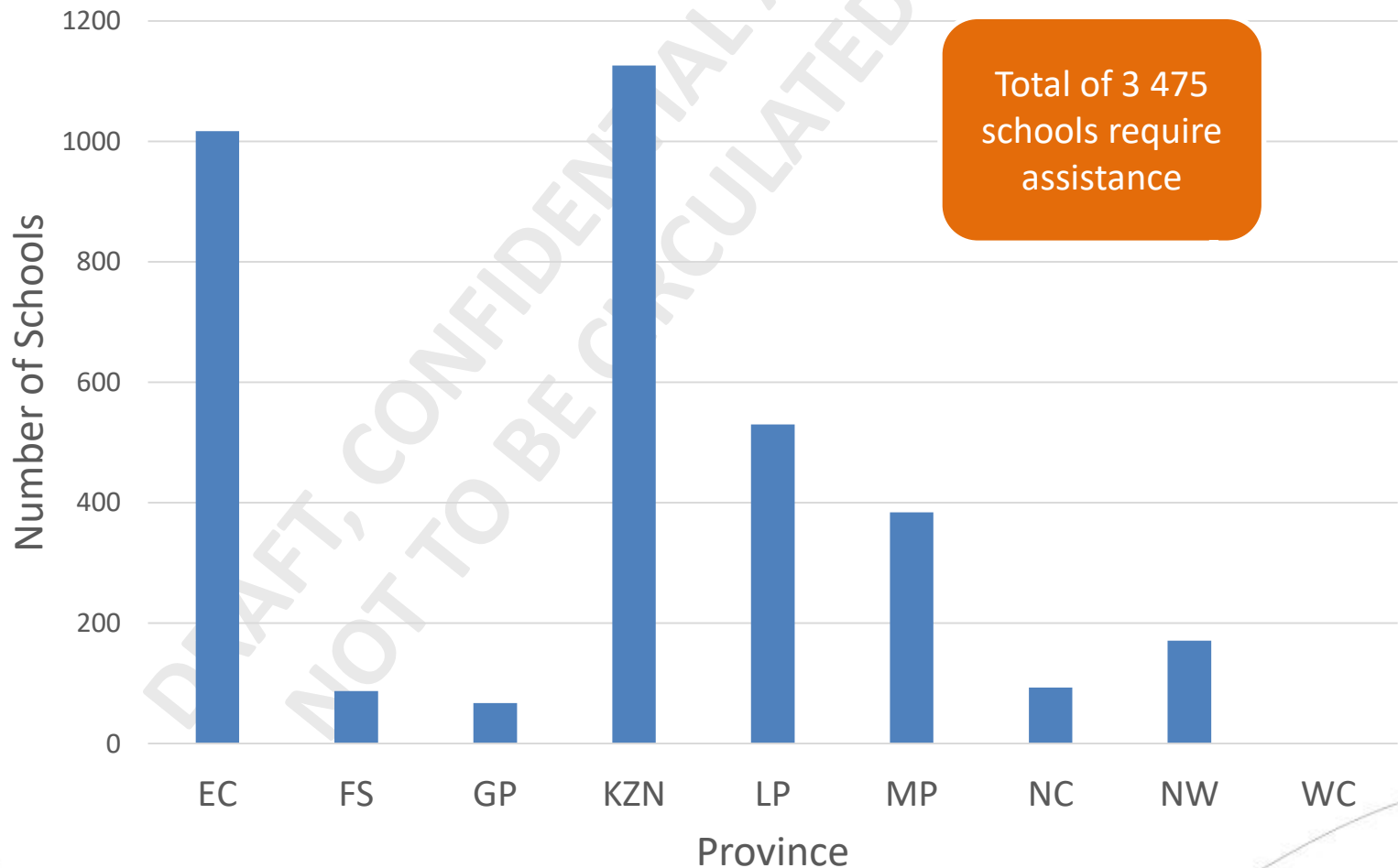
- Work with DoT to ensure that **buses are sanitized** prior to start of trip
- Sanitize hands on **entering** of bus
- Manage **distance** between learners in bus
- Compulsory **wearing of masks** throughout the school day, starting before boarding transport

WATER AND SANTATION

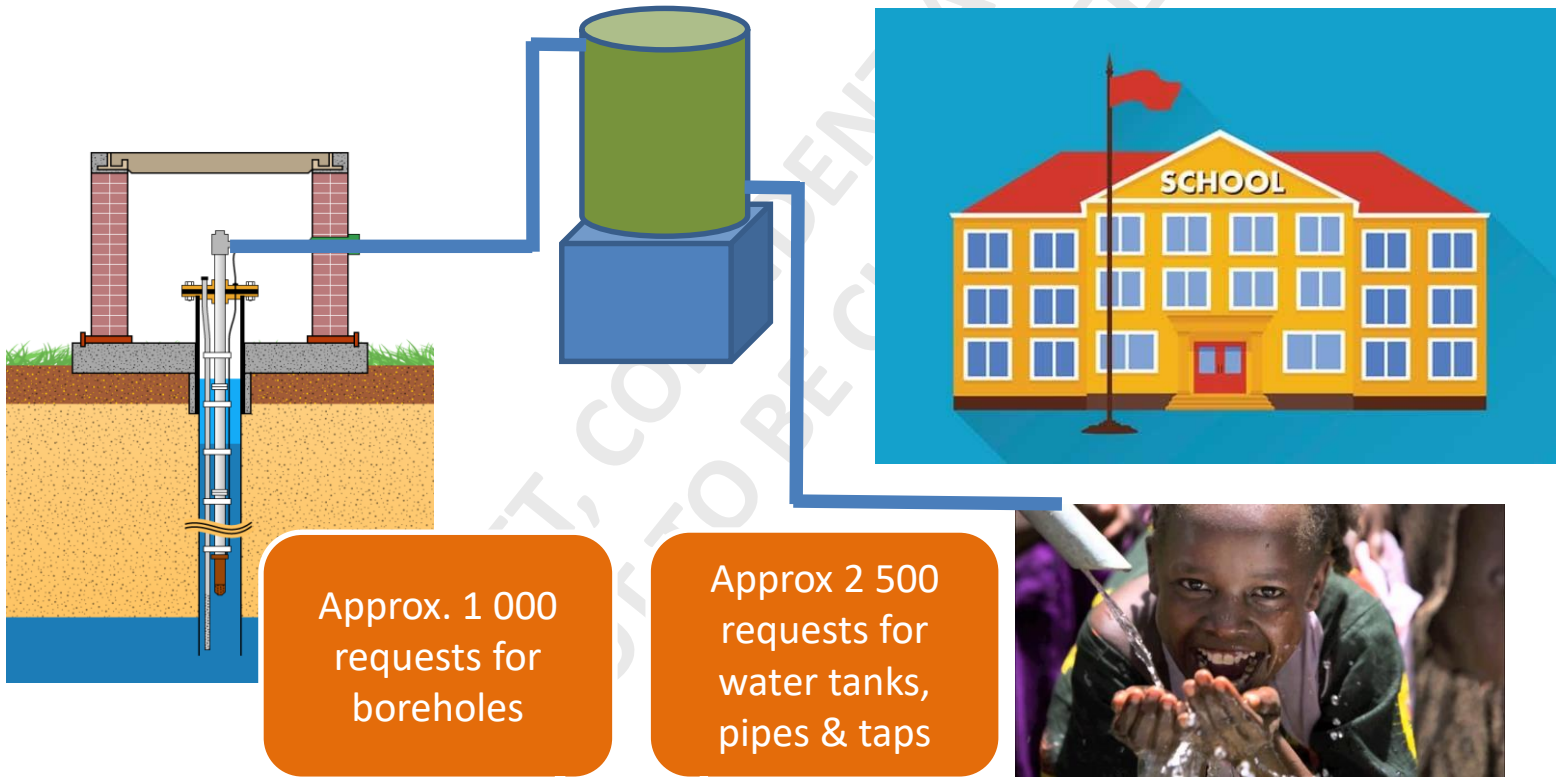
LOCATION OF SCHOOLS IN NEED OF EMERGENCY WATER SUPPLY



NUMBER OF SCHOOLS IN NEED OF EMERGENCY WATER SUPPLY



BREAKDOWN OF PROVINCIAL REQUESTS



REMEDIAL MEASURES

1. Provinces identified schools with **critical** water supply **challenges**.
2. Department of Water & Sanitation (**DWS**) initiated an Emergency Water Supply programme:
 - a) That **installs water tanks** at critical supply points
 - b) Then deliver **portable** water by **water trucks** to these tanks
3. DBE will **participate** in this initiative to get water tanks installed at the identified schools and to get potable water delivered to these tanks.
4. Following the latest liaison with Provinces, the revised figure is around **3 500** schools with critical water supply challenges.

BASIC SANITATION AND HYGIENE PACKAGE

- A basic and **essential hygiene** and **sanitation** package has been developed, and provinces are procuring items. These include cleaning and disinfection materials, PPE, sanitizers, handwashing soap, gloves, cloth masks & thermometers.
- The DBE has developed **Guidelines** for schools on maintaining hygiene during the COVID-19 pandemic to provide recommendations on the proper cleaning and use of Personal Protective Equipment (**PPE**) based on risk exposure including:
 - Basic principles of **infection prevention** and control;
 - **Risk reduction** methods for schools, classrooms, toilets/bathrooms, offices, and food preparation areas;
 - Daily **duties** of cleaners; and
 - **How to use** Personal Protective Equipment (**PPE**).

PROCUREMENT OF COVID – 19 ESSENTIALS

- National Treasury [NT] has issued NT **Instruction No. 3 of 2020/2021** which regulates the procurement of Personal Protective Equipment [PPE] by government institutions:
 - Ordering is **centralised** at the Office of the Chief Procurement Officer.
 - **Imperial Health Sciences** contracted by NT to procure items in bulk from outside the country quicker and at competitive prices and also deliver locally efficiently.
 - Provinces were expected to place orders already and all purchase **orders were due by 20 April 2020**.
 - Exploring procurement of PPE from **local manufacturers**.

SCREENING, TESTING & TRACING

- **Screening** of learners and educators will be done at re-opening of schools starting with Grades 7 and 12 (temperature check).
- Learners or staff members that present with **raised temperature** will then be considered for **isolation** and **testing**.

STANDARD OPERATION PROCEDURES

The **Standard Operating Procedures (SOPs)** for the Containment and Management of COVID-19 for Childcare Facilities, Schools and School Communities (consulted with DOH and provinces) provide **guidelines for all administrators** on the **steps to be undertaken** in order to prevent the spread and manage cases of COVID-19 including:

- Guidance for childcare facilities and schools on **preventing the of spread of COVID-19**;
- **Role** of childcare facilities and schools in **responding** to COVID-19;
- **Management of COVID-19 Cases** in a Childcare facility or School;
- Guidelines for Heads of Departments and Supervisors on COVID-19: **Procedure regarding employees**;
- Management and Monitoring of **absenteeism**;
- Learner **Transport measures**;
- **Closure of a unit/component/office/department** if an employee tested positive for COVID-19; and
- How to **clean educational establishments** where there were learners, staff or others with suspected or confirmed cases of COVID-19.

ORIENTATION AND TRAINING

- The purpose of the orientation and training programme is to enable learners, educators and non-teaching staff to **adjust** to and become **familiar** with the **special arrangements** at schools following the outbreak of the corona virus in South Africa.
- The orientation programme provides **guidelines** for **interaction** with learners, parents, educators and non-teaching staff in the school community.
- All **learners, educators** and **support staff** will receive orientation and training at the start of the school reopening commencing with Grade 7 and 12.
- The orientation and training programme/package will comprise:
 - a **training manual**
 - **Video clips** and an **information booklet** are the key resources to deliver the orientation programme
 - **Posters** and appropriate **signage** to direct teachers, learners and non-teaching staff on what to do.
- The orientation programme will be linked to a communication strategy and shared through:
 - **Television** and **Radio** Broadcasts
 - **WhatsApp** and other **social media** platforms
 - **Websites** of DBE, PEDs and Partners

DRAFT AMENDED SCHOOL CALENDAR

- The **original school calendar** year started on 15 January 2020 and would have ended on **4 December 2020**. The **amended school calendar** will end on **9 December 2020**.
- The School Calendar for 2020 will be adjusted to have schools open on **4 May 2020 for teachers and 6 May for learners**. The grades will be phased-in starting with Grades 7 and 12. **The lost school days will be recovered by shortening the June holidays to 5 days and the September holidays to a long weekend in order to make up these days.** The 4th term will also be lengthened to close on 9 December 2020 for learners and 11 December 2020 for teachers.

Grade 12 and 7	Term 2	Term 3	Term 4
Start of Term	<ul style="list-style-type: none"> 4 May 2020 Teachers 6 May 2020 for Learners 	<ul style="list-style-type: none"> 3 August 2020 	28 September 2020
End of Term	<ul style="list-style-type: none"> 26 July 2020 	<ul style="list-style-type: none"> 23 September 2020 	<ul style="list-style-type: none"> 9 December 2020 learners 11 December 2020 Teachers
	<ul style="list-style-type: none"> 1 week holiday from 29 June – 3 July 2020 	<ul style="list-style-type: none"> Long weekend holiday from 24 – 27 September 2020 	December holiday
Implications	<ul style="list-style-type: none"> School days/Time lost (max) = 25 days/5 weeks Curriculum Coverage = 5 Weeks Teaching time at 7hrs/day = 175 hours 		

CURRICULUM RECOVERY FRAMEWORK

The Framework is guided by the following principles:

- a) **Responsiveness to the National Covid19 Programme-** the national regulations, programme and protocols are strictly adhered
- b) **Inclusion and Equity-** all learners and particularly the most vulnerable access the planned programmes.
- c) **Targeted Approach** - taking cognizance of the unique needs of schools, phases and grades.
- d) **Size and Scope-** curriculum plans are determined in a flexible way guided by the size and the scope of the crisis, a short or long lockdown, and the implications that this will have on teaching and learning.
- e) **Partnerships-** ensuring full participation and ownership of all key stakeholders.
- f) **Safety and Security-** maintaining the safety, health, and well-being of teachers, learners and support staff.
- g) **Time Management-** time is of the essence in the recovery plan and hence time must be strictly managed at school level
- h) **Quality-** the priority will be on quality teaching and learning and a focus on skills, knowledge and values
- i) **Nationally co-ordinated approach-** the Department of Basic Education will provide clear directives of what is expected of each provincial education department and compliance to these directives will be monitored

IMPLICATIONS FOR THE CURRICULUM

IMPLICATIONS	STRATEGY/ RECOMMENDATIONS
Curriculum Coverage	<p><u>Curriculum Review</u></p> <ul style="list-style-type: none">• Curriculum reorganisation and trimming (except for Grade 12);• Annual teaching plans amended for each grade and each subject;• Fundamental skills and concepts for each grade will be retained;• Content in Life Orientation/Skills will be rearranged to address personal hygiene, self-study skills, emotional and psychological trauma;• Every lesson should contribute 5 minutes teaching awareness on COVID-19.

PHASING IN APPROACH

Public Ordinary/Special Schools	Schools of Skill	SID Schools	Special Care Centres (LSPID)	Tentative Dates
Grades 12 and 7	Year 4			06 May 2020
Grades 11 and 6	Year 3	Grade 6		20 May 2020
Grades 10 and 5	Year 2	Grade 5		03 June 2020
Grades 9 and 4	Year 1	Grade 4		17 June 2020
Grades 8 and 3		Grade 3	Year 3	01 July 2020
Grades 2 and 1		Grade 1 and 2	Year 2	08 July 2020
Grades R		Grade R	Year 1	15 July 2020

IMPLICATIONS FOR EXAMINATIONS

- a) The **Grade 12** will be expected to write the set fully fledged examinations, based on covering the **entire curriculum** and **other grades** will be given a **reworked curriculum** and assessed on **80%**.
- b) The **May/June Exams** for the National Senior Certificate (Grade 12) will be **combined** with the **October /November Exams** and rescheduled for November/December 2020.
- c) **Marking** of examination scripts will run up to **end of December 2020**.
- d) Moderation, standardisation and **release** of the results will be moved to mid/ end of **January 2021**.
- e) SBA will have to be **calculated minus the May/June** exams.
- f) Grade 12 will still write **preparatory examinations** in September.
- g) The November/December **examination time table** will have to be amended accordingly.

SIZE AND SCOPE OF THE COMBINED EXAMINATION

Province	June Examinations (NSC)	June Examination (SC)	November Examinations (FT and PT)	Concurrent June /November Examination
EC	22025	17 888	100463	140 376
FS	5304	6 775	36445	48 524
GP	21722	43 847	153975	219 544
KZ	44877	26 060	184570	255 507
LP	34355	18 134	125930	178 419
MP	18377	12 662	70901	101 940
NW	10346	15 251	39338	64 935
NC	4857	5 493	13538	23 888
WC	13149	19 319	62557	95 025
National	175012	165 429	787717	1 128 158

PSYCHOSOCIAL SUPPORT

- An increase in **social, mental, psychological and emotional difficulties** amongst learners, educators and officials, is anticipated due to losses and trauma experienced through Covid 19.
- Schools as social institutions are serviced by the Psychosocial Support Services of the **Departments of Social Development and Health**.
- In addition to these, the Basic Education Sector has **psychologists and social workers** who had prior training on counseling. They will be able to use their skills to support schools.
- **Guidance to provinces, districts and schools include:**
 - Development of context-specific **provincial plans**;
 - All schools to have **list of contact details** for available **free counselling**, to be redistributed via the various communication platforms;
 - Utilise all **available capacity** including in special schools;
 - Provinces to **leverage capacity** of social partners and **HEIs** offering social work and psychology to expand services to schools; and
 - Ensure **functionality** of school-based and district-based support teams.

QUALITY LEARNING AND TEACHING CAMPAIGN (QLTC)

- Drive the **back to school** Campaign.
- Deal with **anxiety** and **fears** in communities and going back to school.
- **Strengthen** the **interface** between schools and broader society.
- Strengthen **collaboration** between the Basic Education sector, Department of Social Development and Health.
- Strengthen the **link** between **schools** and **homes** of learners who have to receive education at home and workers who have to work from home.

COMMUNICATION STRATEGY

1. To ensure that communities, parents, teachers and learners know and **understand the problem at hand** and the **standards of care expected**.
2. To ensure that service providers in education **understand their role in keeping schools safe**.
3. To manage the **fake news** about the **re-opening** of schools and COVID-19 uncertainties.
4. To regularly **showcase the successes** of the sector in schools back to business.
5. To support schools in **strengthening** their **communication** with parents and local communities.
6. To manage the **flow of awareness messages** from the Department of Health to the Head Office, Districts, Circuits and Schools.
7. To use communication to **promote de-stigmatisation** of the COVID-19 cases within the sector.

ICT AS THE NEW NORMAL

Coronavirus (COVID-19) forced many around the **world to rethink** our daily lives from work to school to entertainment. In **response to travel bans, school closures**, and recommendations to **not gather in large groups** and **social distancing** from fellow humans to limit the spread of the virus, many people **turned to digital tools** to keep some **semblance of normality**. It's been **imperative to digitally transform** our places of **work and education** to be able to operate effectively.

	PRE-LOCKDOWN METHODS	LEVERAGING TECHNOLOGY	KEY CONSIDERATIONS
CURRICULUM DELIVERY	Classroom teaching	Broadcasting (Radio, Television, you tube, Facebook live) Virtual digital classrooms Online content	<ul style="list-style-type: none"> • Security (applications and information) • Limited assessment on broadcasting (revision only) • High data costs (economic impact) • High bandwidth connectivity (Pro-poor strategy)
MEETING/WORKSHOPS	Boardroom	Digital platforms (MS Teams, Zoom, Google hangout)	
GENERAL OFFICE WORK	Office Bound work	Remote server access for secure applications	

Key Focus areas

- Security and data costs, analytics
- Remote Learning

Real time quality data and predictive

Virtual events (conferences, lectures, webinars, podcasts)

NON NEGOTIABLES (PRE-CONDITIONS) FOR THE REOPENING OF SCHOOLS

1. **COVID -19 essentials** (Basic Sanitation & Hygiene Package).
2. **Water & Sanitation** (Mobile facilities to replace pit latrines).
3. **Cleaners** (EPWP).
4. **Screeners** (EPWP).
5. **Additional teaching posts** to deal with **overcrowding** (No class should have more than 40 learners).
6. Additional **substitute posts** to replace staff due to long illness.
7. Provision of **mobile classrooms** to deal with **overcrowding** as temporary measure.
8. **Incubation Camps** for progressed and weaker learners (Grade 12).

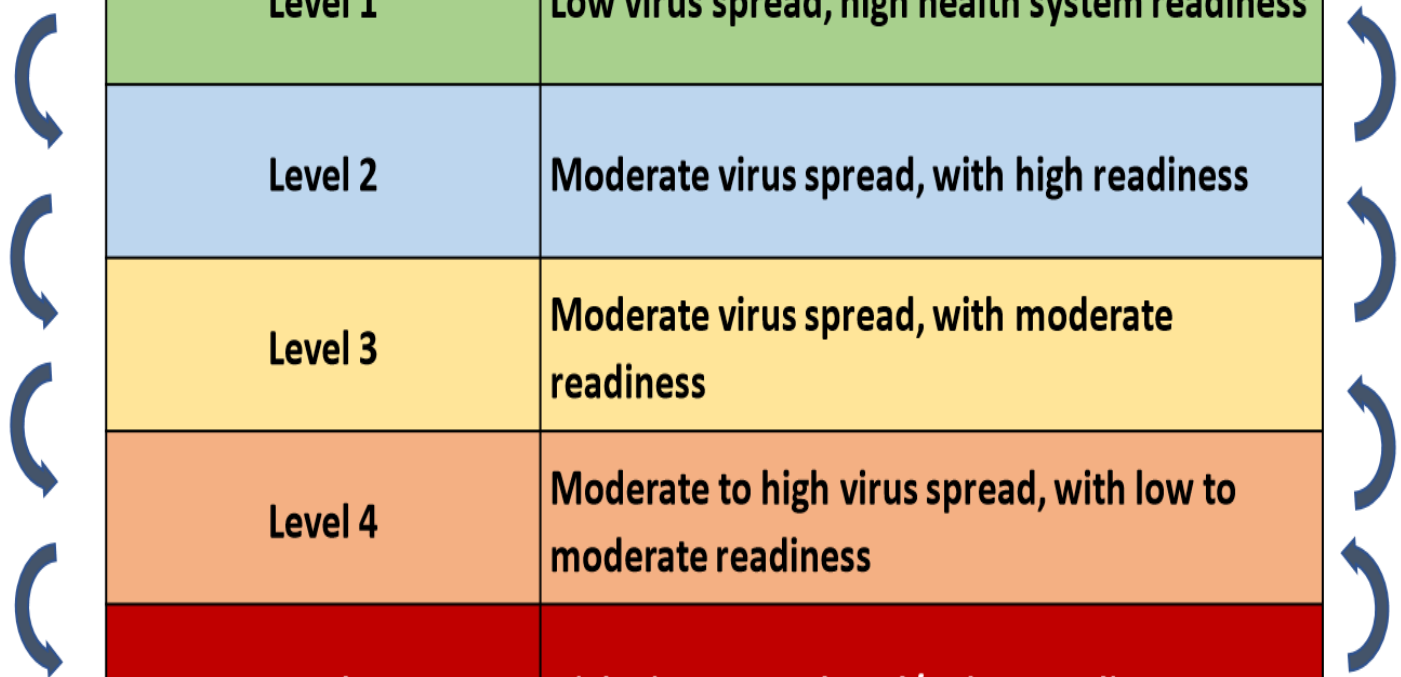
RSA RISK ADJUSTED STRATEGY

DRAFT, CONFIDENTIAL AND NOT
TO BE CIRCULATED



MATRIX FOR LEVELS OF RESTRICTION

Ongoing feedback loop informs decision to remain at a particular level, relax restrictions further, or return to a higher level of restriction.



Level 1	Low virus spread, high health system readiness
Level 2	Moderate virus spread, with high readiness
Level 3	Moderate virus spread, with moderate readiness
Level 4	Moderate to high virus spread, with low to moderate readiness
Level 5	High virus spread, and/or low readiness

SUMMARY OF ALERT LEVELS

ALERT LEVEL 5	ALERT LEVEL 4	ALERT LEVEL 3	ALERT LEVEL 2	ALERT LEVEL 1
 OBJECTIVE				
Drastic measures to contain the spread of the virus and save lives.	Extreme precautions to limit community transmission and outbreaks, while allowing some activity to resume.	Restrictions on many activities, including at workplaces and socially, to address a high risk of transmission.	Physical distancing and restrictions on leisure and social activities to prevent a resurgence of the virus.	Most normal activity can resume, with precautions and health guidelines followed at all times. Population prepared for an increase in alert levels if necessary.

SECTORS PERMITTED

	Level 5	Level 4	Level 3	Level 2	Level 1
Sectors Permitted:	Only Essential Services	Food retail stores can sell full range of previous SKUs. All agriculture. Mining – open cast @ 100% & all other @ 50%. Financial & professional services. All business services for export markets. Postal & Telecoms services. Fibre optic & IT services. Waste Recycling.	Take-away restaurants & online food delivery. Liquor sales. Clothing & hardware retail. Stationery, personal electronics & office equipment. Ecommerce & delivery services. Automotive manufacturing. Chemicals. Bottling. Cement & steel. Global business services.	Construction. All other retail. All other manufacturing. All mines @ 100%. All government services. Installation, repairs & maintenance. Domestic work and cleaning services. Informal waste pickers.	All Sectors
Transport Restrictions:	Buses, taxis and e-hailing vehicles may operate at restricted times.	Buses, taxis and e-hailing vehicles can operate at all times of the day.	Limited domestic air travel – restriction on the # of flights per day and authorisation of need required.	Full domestic air travel and car rental services restored.	All modes of transport.

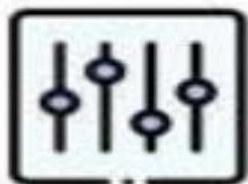
How the alert system works



The **level of alert** at any given time will be decided based on the **rate of transmission**, as well as the capacity of the health system to provide care to those infected.



Different parts of the country may be at **different levels** simultaneously.



It is possible to **move up and down levels**, as well as skip levels if necessary.



Essential goods and services will continue to be available at all levels.



Some precautions will remain in place at all levels, including social distancing guidelines and safe hygiene practices.

PRE-CONDITIONS FOR RESUMING ACTIVITY

- Identification and **protection** of **vulnerable** learners and employees
- **Safe transport** for learners and employees
- **Screening of learners** and employees on **entering** institutions and the workplace
- Prevention of **viral spread** in the workplace
- **Cleaning of surfaces** and **shared equipment**
- **Good ventilation**
- Managing **sick learners** and **employees**

RULES FOR OPERATION

- Offices and Institutions are encouraged to adopt a **work-from-home** strategy where possible, and all staff who can work remotely must be allowed to do so.
- Workers above the age of **60**, as well as workers with comorbidities identified by the Department of Health should be offered a work-from-home option or allowed to remain on leave with full pay.
- There should be **workplace protocols** in place that would include **disease surveillance** and **prevention** of the spread of infection.
- All offices and institutions must **screen employees** and learners on a daily basis for symptoms of COVID-19, including a symptom check as well as temperature assessment.
- All learners and employees must **use a cloth mask** especially where social distancing is not possible.
- Offices and institutions must **have sanitizers** available or **hand washing** facilities with soap.
- **Stringent social distancing** measures should be implemented in the offices and institutions.

A person in a red shirt and blue pants is pushing a large, heavy rock in a room with large windows. The rock has a quote written on it.

**IT ALWAYS
SEEMS
IMPOSSIBLE
UNTIL IT'S DONE**

~Nelson Mandela~

CONCLUSION



