



HAMILTON
COUNTY
SCHOOLS

A Level 5 School District

Reopening Taskforce

Hamilton County Schools

May 21, 2020 Board Meeting

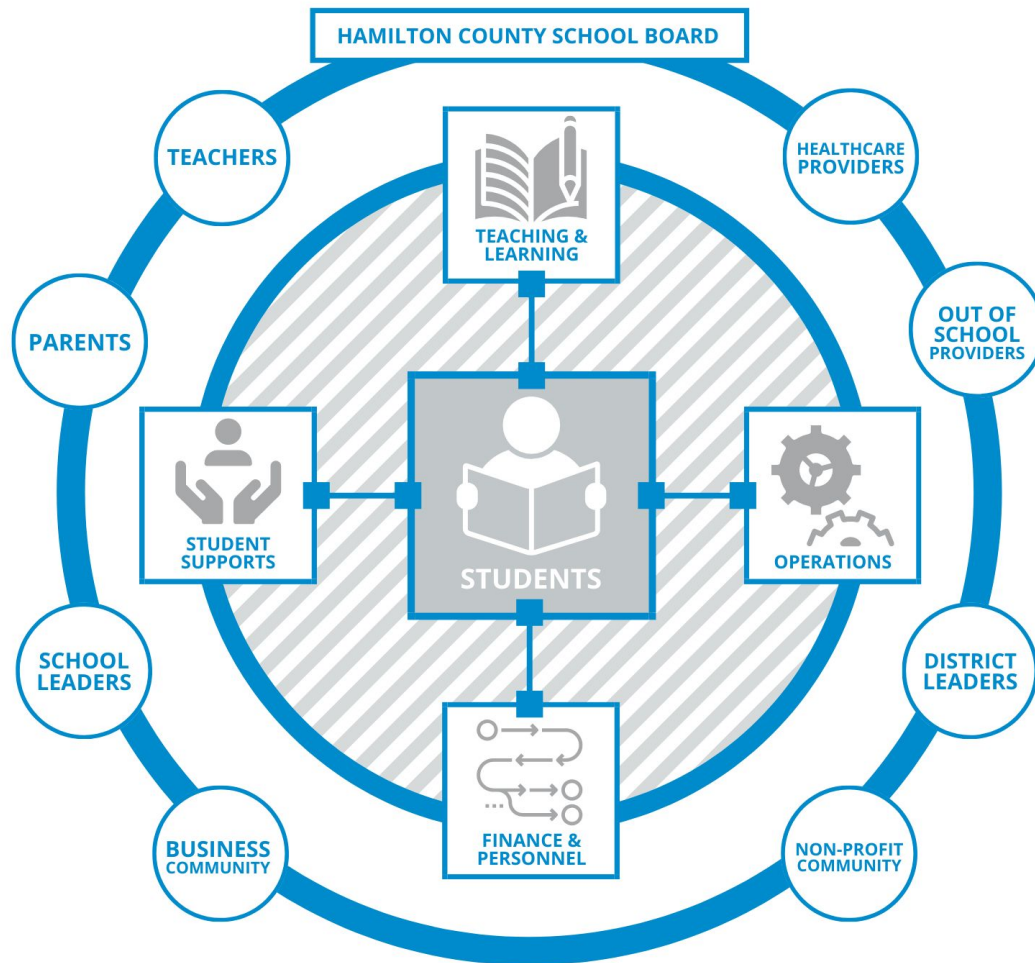


Hamilton County Schools
Will Be the **Best** School
District in Tennessee.

School Board Goals - Future Ready 2023

*Ensure a **safe, clean, and orderly** environment that promotes learning in all schools.*

Address Critical Role of the Schools in Hamilton County



Reopen Plan Components

- Communicate Reopening Guiding Principles
- Address Critical Role of Schools in Hamilton County
- Learn from *HCS Continued Learning* Operating Model
- Build Trust by Ensuring Safety
- Establish Baseline Reopening Phases

Reopening Guiding Principles

- **Minimizing risks to public health**
 - Focus on student, teachers and employees
 - Understand and manage the increased risks for older and immune compromised teachers and students
 - Alignment to state and county health department recommendations, as well as CDC guidance
- **Addressing impacts on students' learning and well being**
 - Skill gaps created by uneven remote learning
 - Social emotional support

Reopening Guiding Principles

- **Recognizing schools' importance to the community**
 - Safety, stability, food security and social development
- **Optimizing operational readiness**
 - Effective health and safety measures to mitigate the risk of infection
 - Ensuring we are prepared for:
 - Infrastructure needs
 - Budget challenges
 - Aligning supply chain with mitigation needs
 - Building policies, and culture to operate safely

Address the Critical Role of Schools

With input from students, families, and employees, we must consider if - and to what extent - school closure:

- Leads to learning loss
- Exacerbates inequities
- Contributes to economic decline

When reopening, HCS anticipates:

- A high demand for mental health and social emotional supports for students, families, employees
- A potential influx in enrollment of students previously attending tuition-based schools

Learn from *HCS Continued Learning*

Lessons Learned:

- **Operations must be flexible and adaptive**
 - HCS quickly adjusted its nutrition operation to efficiently and sustainably feed students throughout the school closure, including Spring Break
- **Digital access is a non-negotiable**
 - Eight weeks of *HCS Continued Learning* revealed that universal wifi and one-to-one devices for all students are prerequisites to success in a remote learning format
- **Clear, frequent communication is key**
 - Weekly PBS spots, English & Spanish Help Hotlines, a Tech Help Hotline, nightly communications to employees, and standing meetings proved invaluable to all stakeholders during the current school closure

Build Trust by Ensuring Safety

HCS will ensure student and employee safety by:

- Complying with state and local orders when reopening facilities
- Implementing best practices
- Offering options to students and employees at higher risk
- Monitoring health and safety actions, including:
 - Screening students and employees upon arrival, limiting visitors & vendors
 - Promoting healthy hygiene practices, and increasing cleaning & disinfecting
 - Training all students and employees on safety protocols
- Encouraging anyone exhibiting symptoms to stay home
- Respond & communicate rapidly if there are cases in a school facility

CDC Guidance

SCHOOLS DURING THE COVID-19 PANDEMIC



The purpose of this tool is to assist administrators in making (re)opening decisions regarding K-12 schools during the COVID-19 pandemic. It is important to check with state and local health officials and other partners to determine the most appropriate actions while adjusting to meet the unique needs and circumstances of the local community.

Should you consider opening?

- ✓ Will reopening be consistent with applicable state and local orders?
- ✓ Is the school ready to protect children and employees at **higher risk** for severe illness?
- ✓ Are you able to screen students and employees upon arrival for symptoms and history of exposure?

ANY
NO

DO NOT
OPEN

Are recommended health and safety actions in place?

- ✓ Promote healthy hygiene practices such as hand washing and employees wearing a cloth face covering, as feasible
- ✓ Intensify cleaning, disinfection, and ventilation
- ✓ Encourage social distancing through increased spacing, small groups and limited mixing between groups, if feasible
- ✓ Train all employees on health and safety protocols

ANY
NO

MEET
SAFEGUARDS
FIRST

Is ongoing monitoring in place?

- ✓ Develop and implement procedures to check for signs and symptoms of students and employees daily upon arrival, as feasible
- ✓ Encourage anyone who is sick to stay home
- ✓ Plan for if students or employees get sick
- ✓ Regularly communicate and monitor developments with local authorities, employees, and families regarding cases, exposures, and updates to policies and procedures
- ✓ Monitor student and employee absences and have flexible leave policies and practices
- ✓ Be ready to consult with the local health authorities if there are cases in the facility or an increase in cases in the local area

ANY
NO

MEET
SAFEGUARDS
FIRST

OPEN AND
MONITOR

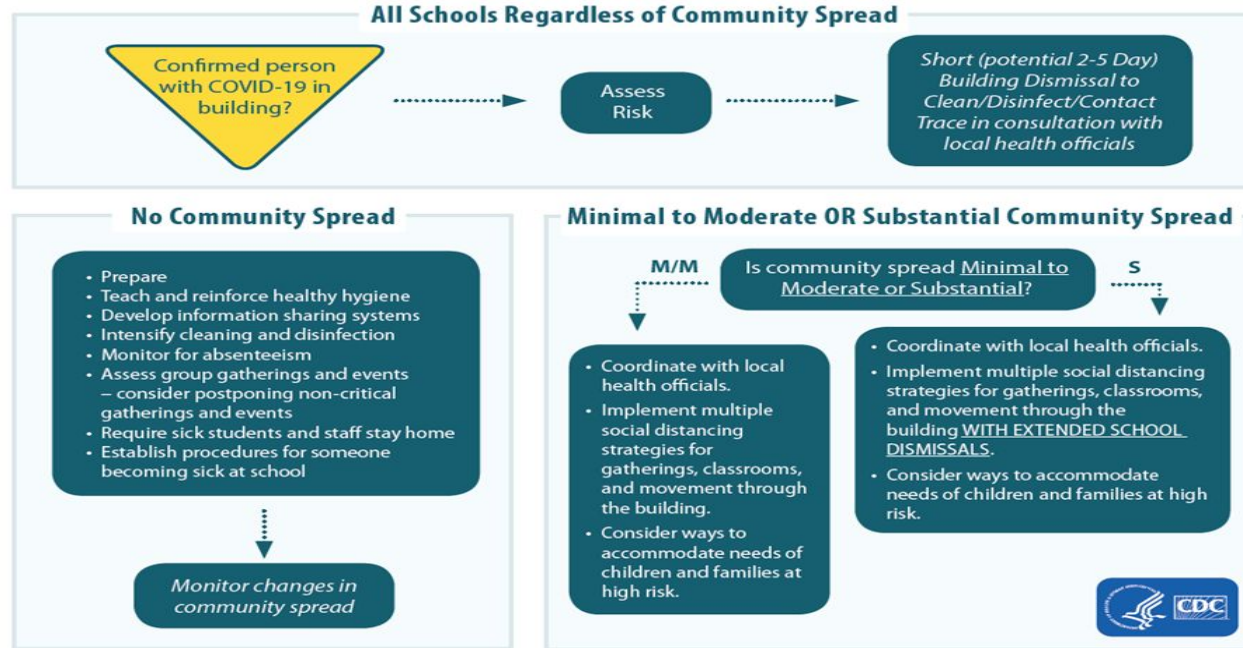


cdc.gov/coronavirus

HCS Continued Learning opportunities should be provided for **higher-risk students**, and those with vulnerable family members, as well as alternative work options for **employees at higher risk**.

Risk based decision making

School Decision Tree



Establish **criteria** and **parameters** for **risk-based** decisions regarding entry into, exit from, and movement between baseline phases.

Baseline Reopening Phases

Phase 1: Risk of spreading of COVID-19 is significant. *Requires Significant Mitigation.*

Potential Scenarios: All schools closed, *HCS Continued Learning* opportunities provided for all students. Plan to support students well-being and academic development for an extended period of time.

Phase 2: Risk of spreading COVID-19 is moderate. *Requires Moderate Mitigation.*

Potential Scenarios: Possible reduced on-campus school hours with focus on core-curriculum classes. Blended *HCS Continued Learning* provided, portion of curriculum taught through remote learning.

Baseline Reopening Phases

Phase 3: Risk of spreading COVID-19 is minimal.
Requires Minimal Mitigation.

Potential Scenarios: All schools open, with majority of curriculum delivered on campus. Short term closure procedures implemented for COVID-19 affected buildings and *HCS Continued Learning* practices are provided.

Phase 4: No risk of community transmission of COVID-19. Requires No Mitigation.

Potential Scenarios: All schools open. Monitor and be prepared to react to identification of COVID-19 positive that affects staff members or students.

Task Force Members

- School Board Chair or designee
- County Commission Chair or designee
- Health professionals
- Parents
- Teachers
- Students
- Administrators
- Community Members (Business, Non-profit, etc.)

*Continual contact and input provided by school board

Next Steps

- **Define specifics of each phase with Department Leaders:**
 - Operations
 - Teaching and Learning
 - Student Supports
 - Budget and Personnel
- **Communication and Community Engagement**
 - Survey stakeholder groups
 - Predictable, regular communication during planning phase
 - Operational plan by early July



Hamilton County Schools
Will Be the **Best** School
District in Tennessee.