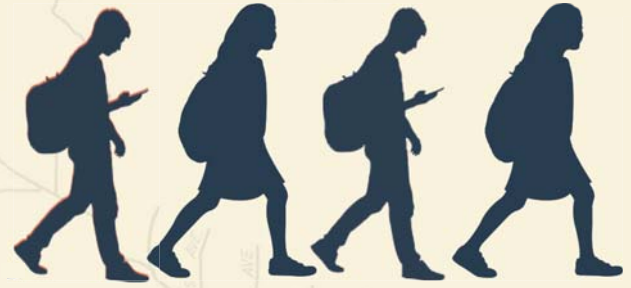


# POLICING OUR STUDENTS



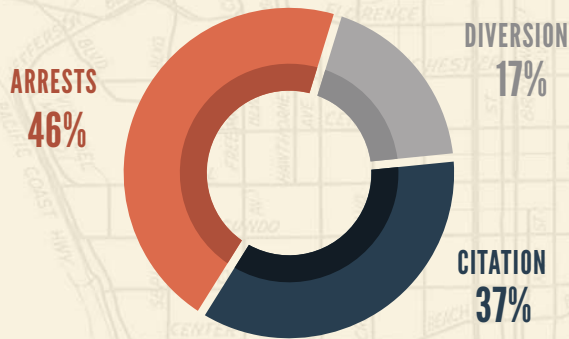
## AN ANALYSIS OF L.A. SCHOOL POLICE DEPARTMENT DATA (2014-2017)

Terry Allen MA, Isaac Bryan MPP, Andrew Guererro, Alvin Teng MPP, Kelly Lytle-Hernández PhD, and the Million Dollar Hoods Team

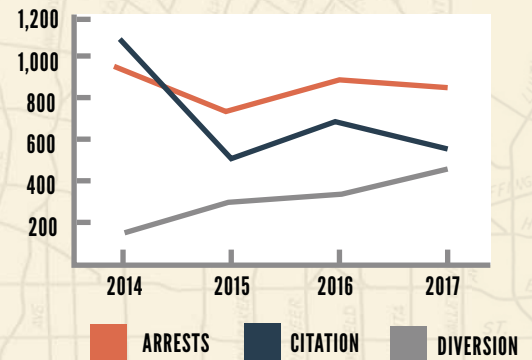
Los Angeles County is home to the largest school police force in the nation and the fifth largest police department in the county.<sup>1</sup> Using Los Angeles School Police Department (LASPD) data, this report provides insight into three processes by which youth come into contact with the LASPD. These processes include arrest, citation, and diversion.

Our analysis shows that LASPD made 3,389 arrests while issuing 2,724 citations and 1,282 diversions between 2014 and 2017. Black youth comprised 25% of the total arrests, citations, and diversions, despite representing less than 9% of the student population.<sup>2</sup> Boys of color made up 76% of all LASPD involvement. Elementary and middle-school age youth accounted for 1 in 4 of the total arrests.

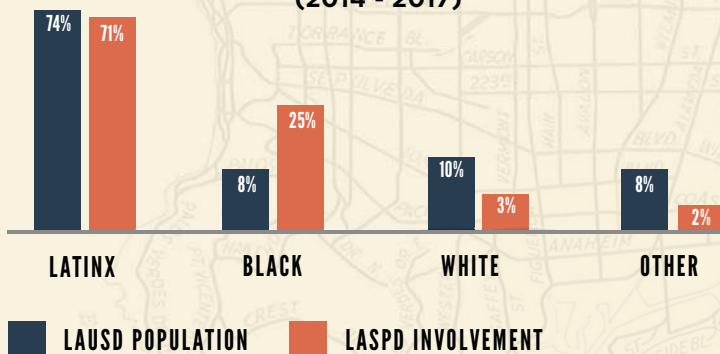
### 7,395 TOTAL YOUTH ARRESTS, CITATIONS AND DIVERSIONS REPORTED BETWEEN 2014 AND 2017



### THE TOTAL NUMBER OF ARRESTS AND CITATIONS HAS SLIGHTLY DECREASED SINCE 2014. DIVERSIONS ARE STEADILY RISING



### LAUSD POPULATION VS. LASPD INVOLVEMENT (2014 - 2017)



### TOP 5 CHARGES FOR LASPD INVOLVEMENT (2014 - 2017)

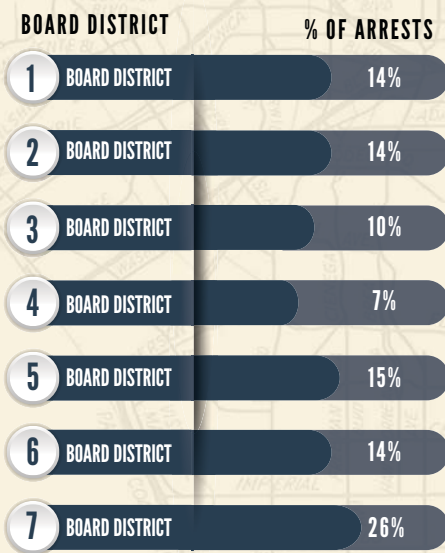
CHARGE CATEGORY	% OF CHARGES
PUBLIC DISTURBANCE	19%
BATTERY	19%
TRESPASSING	10%
CANNABIS CHARGES	9%
VANDALIZE/PROPERTY DAMAGE	9%

# ONE IN FOUR

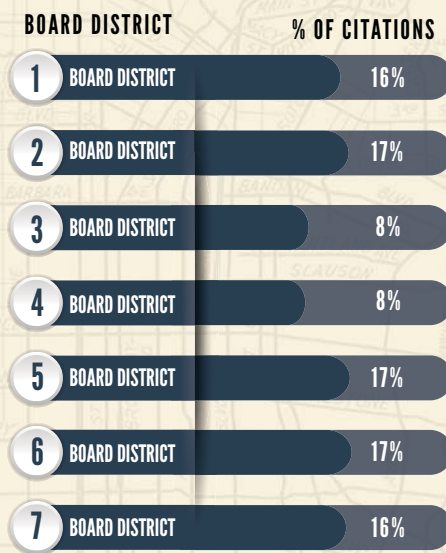
1 IN 4 ARRESTS MADE BY THE LASPD WERE ELEMENTARY AND MIDDLE SCHOOL AGED YOUTH



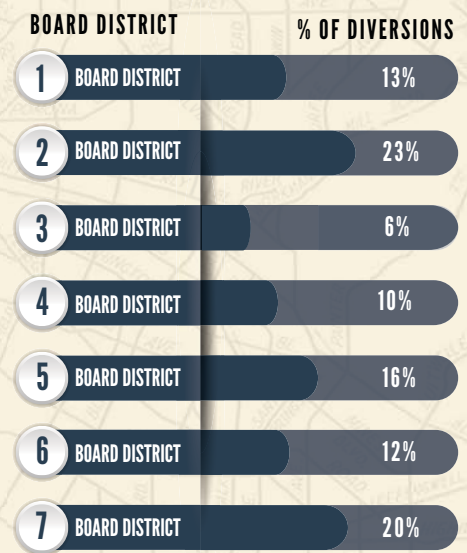
PERCENT OF TOTAL ARRESTS BY SCHOOL BOARD MEMBER (2014 - 2017)



PERCENT OF TOTAL CITATIONS BY SCHOOL BOARD MEMBER (2014 - 2017)



PERCENT OF TOTAL DIVERSIONS BY SCHOOL BOARD MEMBER (2014 - 2017)



TOP 5 ZIP CODES FOR LASPD INVOLVEMENT (2014 - 2017)

	SOUTH CENTRAL			SOUTH GATE	SOUTH CENTRAL
ZIPCODE	90011	90044	90001	90280	90003
TOTAL INVOLVEMENT	350	331	303	277	275

Methodology. On March 25, 2018, the LASPD fulfilled a Public Records Act request submitted by Professor Kelly Lytle Hernandez on January 4, 2018. The data provided included more than 15 categories of information for all contact with youth made by the LASPD between January 1, 2014 and March 31, 2018. For this report, we dropped all observations for the partial 2018 year and utilized the following categories of information: Race, Sex (gender), Involvement Type, Location of Contact, Age, and Charge. To determine the leading charges of LASPD contact we aggregated variations of the same charge such as: Public Disturbance (415, 314.1, 372, 409); Battery (243(A), 243(B), 243.1, 243.2, 243.3, 243, 242); Trespassing (602, 647(H), 555, 626, 419); Cannabis (11357-11362); and Vandalism/Property Damage (594, 591.5, 603, 4600(A), 23110, 23110B)

1 See Los Angeles School District <https://achieve.lausd.net/Page/8851>  
 2 California Department of Education, LAUSD Enrollment Data (2016-2017)

**Recommended Citation:** Allen, Terry, Bryan, Isaac, Guerero, Andrew, Teng, Alvin, and Lytle-Hernandez, Kelly (2018). "Policing Our Students: An Analysis of L.A. School Police Department Data (2014 - 2017)." Los Angeles, CA. The Million Dollar Hoods Project.