

COVID-19 Weekly Report

Oregon's Weekly Surveillance Summary
Novel Coronavirus (COVID-19)



Oregon Public Health Division

Published July 1, 2020

Background

COVID-19 Weekly Report data will be finalized every Sunday at 11 p.m. PDT, and the report will be published on Wednesday. **Please note that the data reported here are continually being updated. For daily up-to-date information visit the [OHA COVID-19 web page](#).**

As of 11 p.m. on Sunday, June 28, there have been 8,485 cases of COVID-19 reported to the Oregon Health Authority. Of these cases, 364 (4.3%) are presumptive cases. Presumptive cases are people without a positive PCR test who have COVID-19-like symptoms and had close contact with a confirmed case. Though not confirmed by a positive diagnostic test, presumptive cases have a high likelihood of having COVID-19 because of the specific nature of the symptoms and known exposure. Presumptive cases are encouraged to seek testing to confirm that they do have COVID-19. Presumptive cases who test positive are recategorized as confirmed cases.

These data represent a snapshot of COVID-19 risk factors, clinical and demographic characteristics and include data on cases with pending investigations. Not all cases have been interviewed at the time of this report. The data shown in this report come from Orpheus, which is an electronic disease surveillance system for reportable diseases for the state of Oregon.

During the week of June 22–28, 28,359 persons were tested for COVID-19 in Oregon and 4.2% of those people had a positive result. Not all positive tests represent new cases, some positive tests come from specimens collected from people who had already been counted as presumptive cases. These represent tests done at all locations, including commercial non-hospital-based laboratories, hospital laboratories and Oregon State Public Health Laboratory. Based on the current received inventory volumes and what has been distributed, the state's weekly testing capacity is estimated at 33,000.

Weekly Report Summary

Most indicators point to a resurgence in COVID-19 transmission during the previous week. Newly reported COVID-19 cases continue to increase during the week from Monday, June 22, through Sunday, June 28, OHA recorded 1,402 new cases of COVID-19 infection, an 11% increase from the previous week (1,263 new cases). In addition, 12 Oregonians were reported to have died, the same number as the preceding week. Statewide, cumulative reported COVID-19 cases have reached 8,485 (19.7 cumulative cases per 10,000 Oregonians) and 204 Oregonians (0.5 cumulative deaths per 10,000 Oregonians) are known to have died with COVID-19 since the beginning of the outbreak.

The number of COVID-19 tests* reported (28,359) decreased by 11% and the percentage of tests positive increased to 4.2% from 3.7% in the preceding week. The daily number of newly reported infections again achieved new highs in Oregon since the emergence of COVID-19. Though, well below earlier highs, [hospitalizations](#) have once again begun increasing after reported cases have been increasing for four weeks. [ICU bed usage](#) remains well under capacity statewide. In contrast to March and April, when new diagnoses were proportionally more prevalent in older people, about 75% of recent cases have been diagnosed in people younger than 50 years old (Figure 5). Since hospitalization is less common among younger people with COVID-19 infection, statewide hospital capacity remains sufficient for now.

Large outbreaks (Table 7) have contributed a diminishing proportion of recent cases, and sporadic cases have increased (Figure 1), consistent with diffuse community spread. For the first time since early May, fewer than 95% of cases identified on most recent days were [contacted by local public health staff within 24 hours](#), suggesting that increasing diagnoses have begun to exceed investigatory resources.

COVID-19 Weekly Report

Oregon's Weekly Surveillance Summary
Novel Coronavirus (COVID-19)



Oregon Public Health Division

Published July 1, 2020

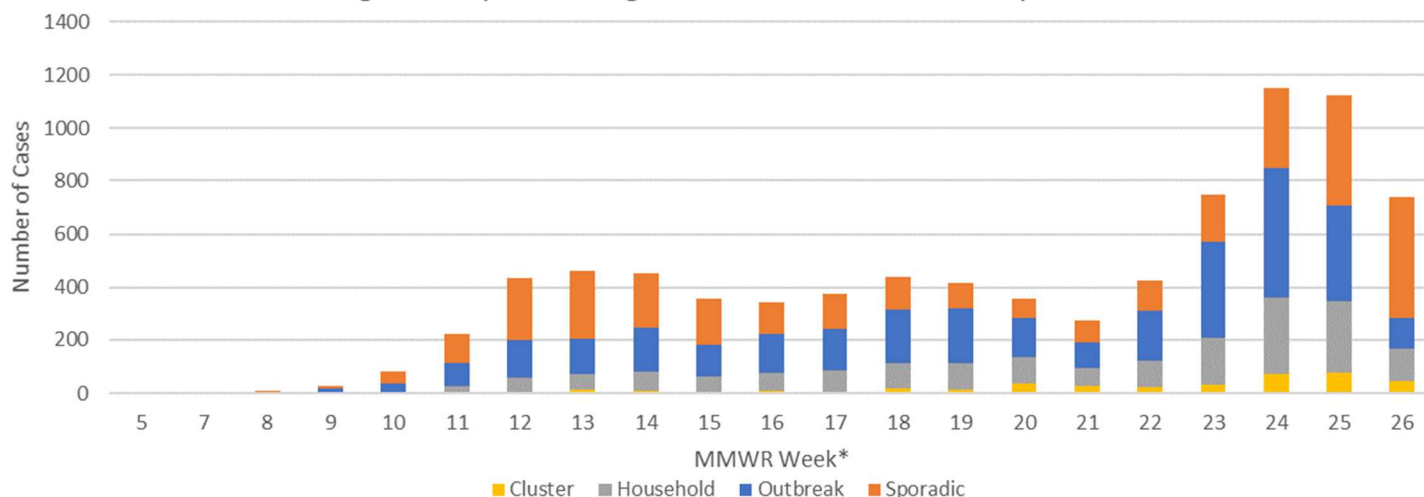
Recent data on mortality in Oregon, including deaths related to COVID-19, are available at <https://public.tableau.com/profile/oha.center.for.health.statistics#!/>

* Does not include antibody (serology) tests.

Clinical Characteristics, Risk Factors and Demographic Characteristics

Figure 1 shows the number of cases reported weekly by their epidemiological link. Figure 2 provides information on signs and symptoms from all COVID-19 cases. Of all 8,485 cases, 76.2% (n=6,464) reported having signs and symptoms of COVID-19. The two most commonly reported symptoms are cough (n=4,626, 54.5%) and headache (n=3,877, 45.7%). Figure 3 provides information on risk factors from all COVID-19 cases. The two most common risk factors are having contact with a known COVID-19 case prior to symptom onset (n=5,653, 66.6%) and having underlying medical conditions (n=4,110, 48.4%). Note that a person may report more than one sign/symptom or risk factor.

Figure 1. Epidemiologic link of COVID-19 cases by week



*MMWR Week: The MMWR week is the week of the epidemiologic year assigned to notifiable infectious diseases for the purposes of incidence reporting and publishing. MMWR week supports reporting of notifiable infectious disease incidence data at the national level. https://www.cdc.gov/nndss/document/MMWR_Week_overview.pdf

Where displayed by MMWR week in this report, case data are categorized by week of reported symptom onset, not by date of case report. This results in reduced numbers in the most recent week or more due to reporting lags.

Sporadic: Cases with a sporadic epidemiologic link do not have known exposure to another case or outbreak.

Outbreak: Cases with an outbreak epidemiologic link have a shared, defined exposure with at least one other case. For example, a defined exposure could be an event, a workplace, a congregate facility, etc.

Cluster: Cases with a cluster epidemiologic link had contact with another case, but the exposure is not well defined. For example, cases from two households may have interacted many times prior to illness onset.

Household: Cases with a household epidemiologic link were exposed to another case in their household.

COVID-19 Weekly Report

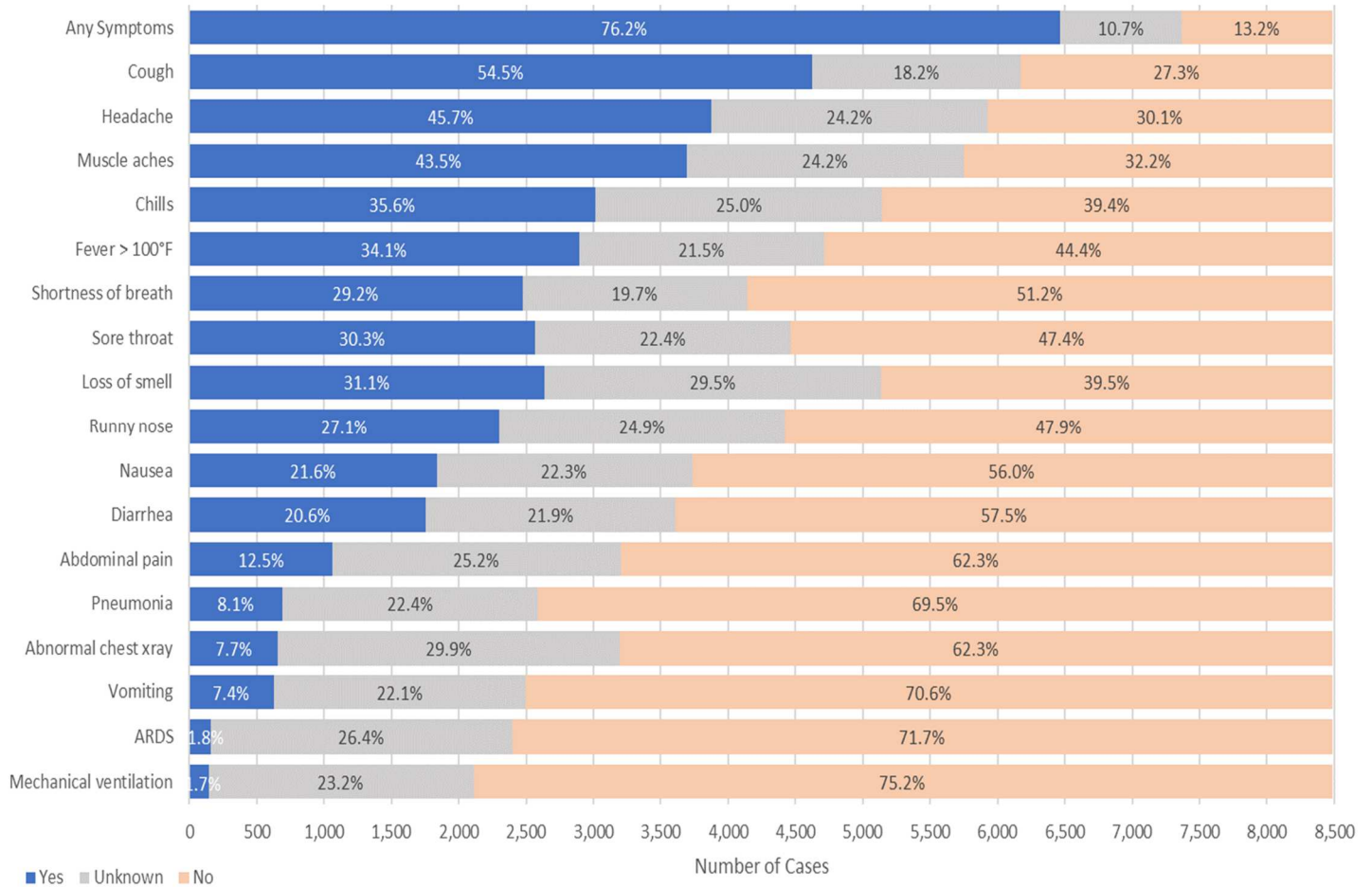
Oregon's Weekly Surveillance Summary
Novel Coronavirus (COVID-19)



Oregon Public Health Division

Published July 1, 2020

Figure 2. Reported signs and symptoms for all confirmed COVID-19 cases (n=8,485)



COVID-19 Weekly Report

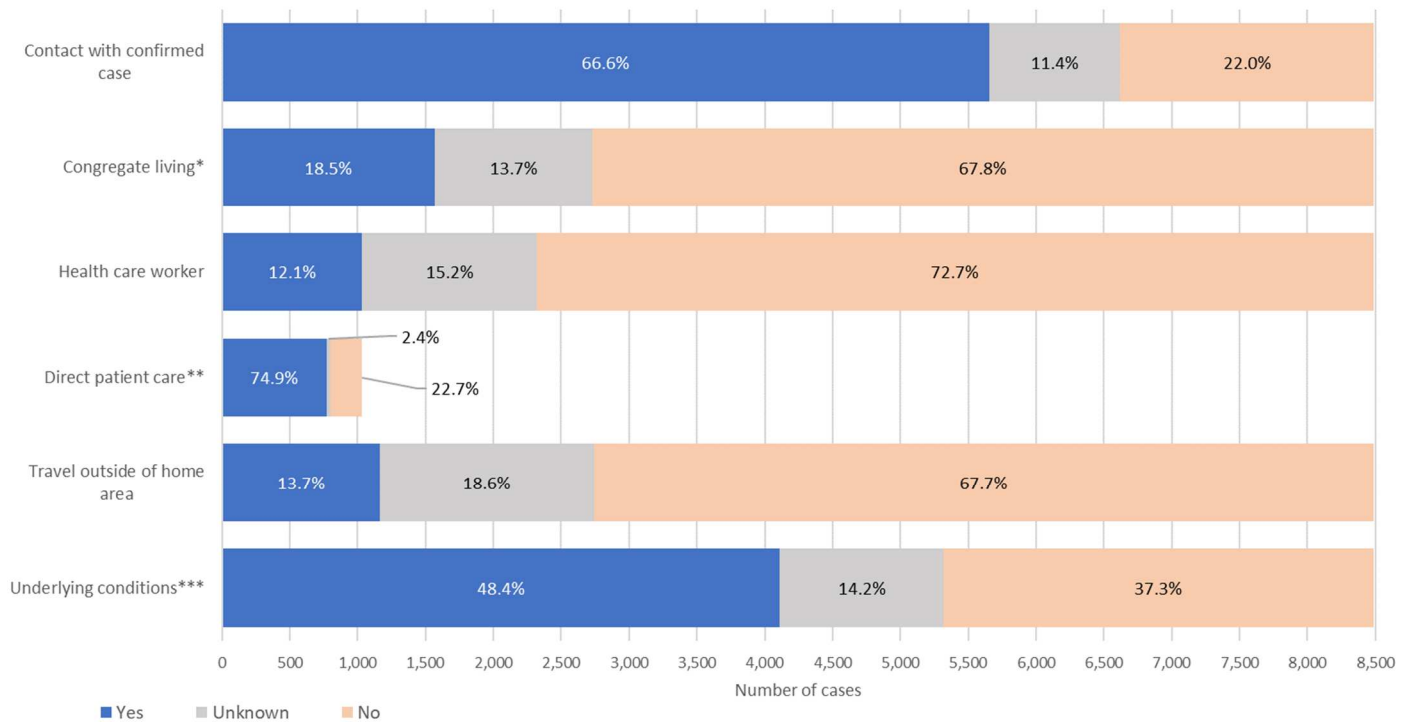
Oregon's Weekly Surveillance Summary
Novel Coronavirus (COVID-19)



Oregon Public Health Division

Published July 1, 2020

Figure 3. Reported risk factors from all COVID-19 cases (n= 8,485)



*Congregate living situations include, but are not limited to, long-term care facilities, group homes, prisons, and shelters. Data include people with confirmed cases who live or work in congregate living situations.

**Direct patient care is only asked if a case is a healthcare worker or volunteer. The denominator is the number of healthcare workers or volunteers.

***Underlying medical conditions include cardiovascular disease, chronic liver disease, chronic lung disease, chronic renal disease, current or former smoker, diabetes mellitus, immunocompromised condition, neurologic and neurodevelopmental conditions, obesity, or other chronic diseases.

The following tables show the demographic characteristics for all COVID-19 cases. Table 1 and 2 shows case demographic distribution. Figures 4 and 5 shows the case demographic distribution by MMWR week. Tables 3 and 4 show race and ethnicity respectively. Figures 6 and 7 show race and ethnicity by MMWR week respectively.

Table 1. Severity and rates of COVID-19 by sex (n=8,485)

Sex	Cases	% of total cases	Cases per 10,000 ^a	Hospitalized	% Hospitalized	Deaths	Case fatality
Male	4,058	47.8%	18.9	541	13.3%	116	2.9%
Female	4,414	52.0%	20.5	484	11.0%	88	2.0%
Non-Binary	1	0%	n/a	0	0.0%	0	0%
Not available	12	0%	n/a	0	0.0%	0	0%
Total	8,485	100.0%	20.0	1025	12.1%	204	2.4%

^aPopulation data were compiled from the 2019 Annual Oregon Population Report which is produced by the Population Research Center, Portland State University

Data are provisional and subject to change.

COVID-19 Weekly Report

Oregon's Weekly Surveillance Summary
Novel Coronavirus (COVID-19)



Oregon Public Health Division

Published July 1, 2020

Figure 4. COVID-19 cases by sex and MMWR week (n=8,485)

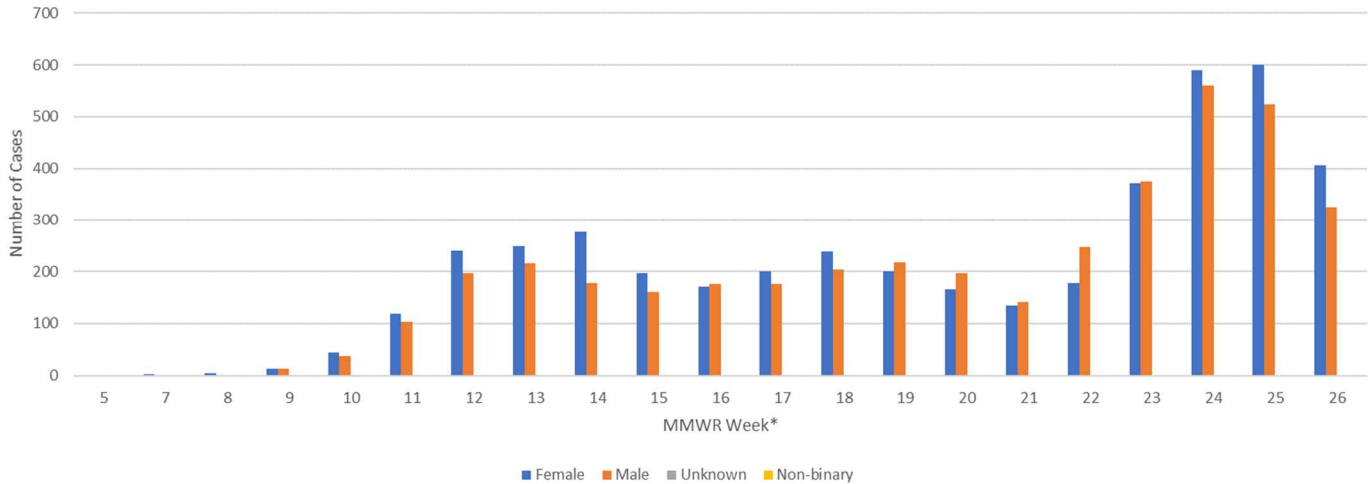


Table 2. Severity and rates of COVID-19 by age group (n=8,485)

Age group	Cases	% of total cases	Cases per 10,000 ^a	Hospitalized	% Hospitalized	Deaths	Case fatality
0-9	312	3.7%	6.5	7	2.2%	0	0%
10-19	624	7.4%	12.6	6	1.0%	0	0%
20-29	1658	19.6%	29.9	53	3.2%	0	0%
30-39	1498	17.7%	25.9	78	5.2%	1	0%
40-49	1408	16.6%	25.9	124	8.8%	3	0.2%
50-59	1235	14.6%	23.1	176	14.3%	9	0.7%
60-69	836	9.9%	15.5	222	26.6%	40	4.8%
70-79	523	6.2%	15.4	206	39.4%	55	10.5%
80+	375	4.4%	22.4	153	40.8%	96	25.6%
Unknown	16	0.2%	NA	0	0%	0	0%
Total	8,485	100.0%	20.0	1025	12.1%	204	2.4%

^aPopulation data were compiled from the 2019 Annual Oregon Population Report which is produced by the Population Research Center, Portland State University

COVID-19 Weekly Report

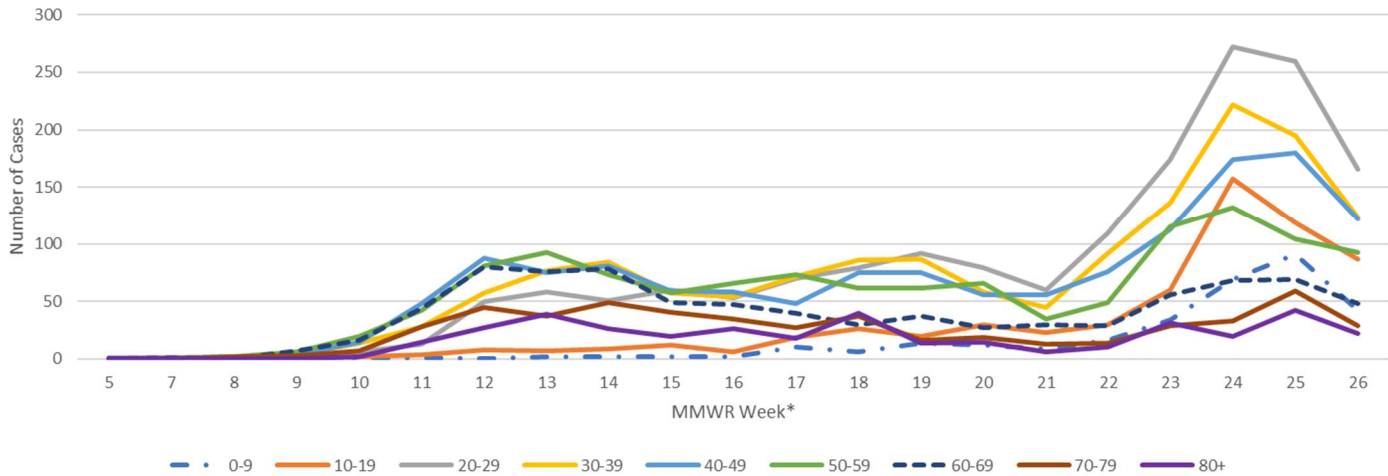
Oregon's Weekly Surveillance Summary
Novel Coronavirus (COVID-19)



Oregon Public Health Division

Published July 1, 2020

Figure 5. COVID-19 cases by age group and MMWR week (n=8,469)



^a16 cases were missing age; these cases are not included in Figure 5.

Table 3. Severity and rates of COVID-19 by race^a (n=8,485)

Race	Cases	% of total cases	Cases per 10,000 ^b	Hospitalized	% Hospitalized	Deaths	Case fatality
White	3,490	41.1%	9.8	582	16.7%	150	4.3%
Black	368	4.3%	45.6	47	12.8%	6	1.6%
Asian	327	3.9%	18.1	44	13.5%	9	2.8%
American Indian/Alaska Native	179	2.1%	36.7	15	8.4%	3	1.7%
Pacific Islander	262	3.1%	157.7	39	14.9%	5	1.9%
Other ^c	2,586	30.5%	n/a	226	8.7%	16	0.6%
>1 race	245	2.9%	12.2	18	7.3%	2	0.8%
Not available	1,028	12.1%	n/a	54	5.3%	13	1.3%
Total	8,485	100.0%	20.0	1025	12.1%	204	2.4%

^aDuring the course of the case investigation, people are asked to self-report their race, ethnicity, tribal affiliation, country of origin, or ancestry.

^bNCHS Population Estimates: National Center for Health Statistics (NCHS), Estimates of the resident population of the US by year, county, age, bridged race, Hispanic origin, and sex (Vintage 2018). 2) Census Bureau Population Estimates: U.S. Census bureau, Population Division, Annual Estimates of the Resident Population by Age, Sex, Race, and Hispanic Origin for counties (Vintage 2018)

^c2,000 of the 2,056 persons who identify as "Other" race also self-identify as Hispanic or Latino.

COVID-19 Weekly Report

Oregon's Weekly Surveillance Summary
Novel Coronavirus (COVID-19)



Oregon Public Health Division

Published July 1, 2020

Figure 6. COVID-19 cases by race and MMWR week (n=8,485)

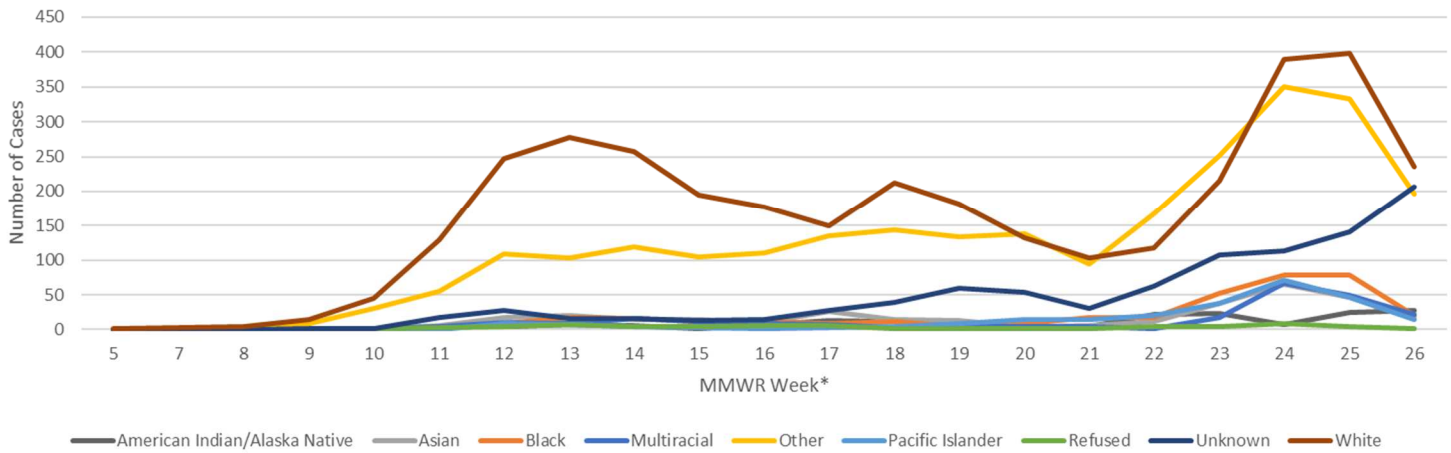
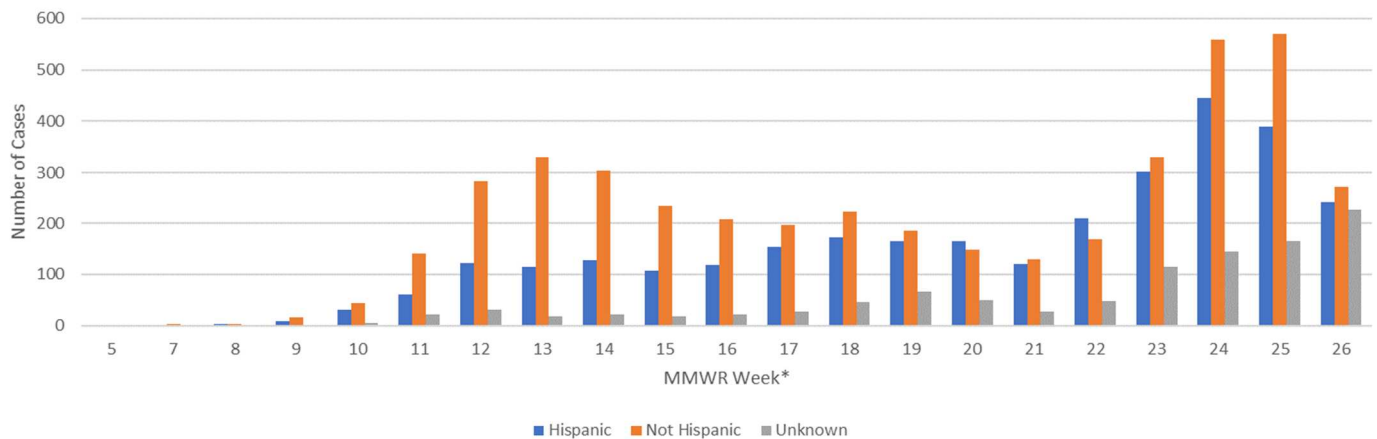


Table 4. Severity and rates of COVID-19 by ethnicity (n=8,485)

Ethnicity	Case count	% of total cases	Cases per 10,000 ^a	Hospitalized	% Hospitalized	Deaths	Case fatality
Hispanic	3,061	36.1%	56.3	262	8.6%	24	0.8%
Non-Hispanic	4,353	51.3%	11.8	701	16.1%	163	3.7%
Not available	1,071	12.6%	n/a	62	5.8%	17	1.6%
Total	8,485	100.0%	20.0	1025	12.1%	204	2.4%

^aNCHS Population Estimates: National Center for Health Statistics (NCHS), Estimates of the resident population of the US by year, county, age, bridged race, Hispanic origin, and sex (Vintage 2018). 2) Census Bureau Population Estimates: U.S. Census bureau, Population Division, Annual Estimates of the Resident Population by Age, Sex, Race, and Hispanic Origin for counties (Vintage 2018)

Figure 7. COVID-19 cases by ethnicity and MMWR week (n=8,485)



COVID-19 Weekly Report

Oregon's Weekly Surveillance Summary
Novel Coronavirus (COVID-19)



Oregon Public Health Division

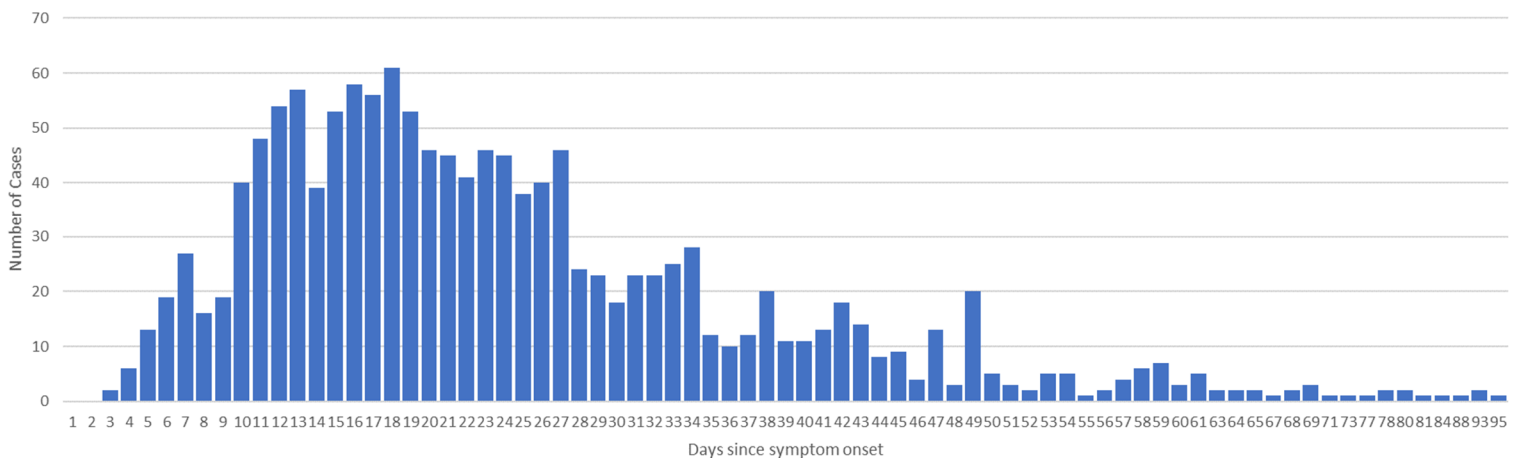
Published July 1, 2020

Recovery

OHA staff periodically call people with reported cases of COVID-19 who experienced fever, cough, shortness of breath or diarrhea and were initially interviewed before May 1, when OHA changed its definition of recovery, to inquire about resolution of symptoms. This group includes 1,885* people who were all diagnosed before mid-April and have not succumbed to their illness. Among these, 1,639 (86.5%) of cases are considered recovered, and a recovery date is available for 1,380 people. It is this group of 1,380 for which recovery times are depicted in Figure 8. Of these 1,885 people, 50 (2.6%), have yet to recover, and current recovery status is not yet available for 196 (10.3%) of these cases. People are assumed to have recovered three days after resolution of all symptoms. The median time to recovery among non-hospitalized symptomatic cases is presently 20 days (interquartile range: 15–29 days); among symptomatic cases who were hospitalized it is 25 days (interquartile range: 18–37 days).

*Case counts have decreased from 1894 to 1885. This is because this case count excludes people who have died. Onsets may also have been updated when OHA staff call and ask them about their illness

Figure 8. Time to recovery* among symptomatic people** with confirmed COVID-19 (n=1,383)



*Three days after reported resolution of diarrhea, cough, shortness of breath and fever.

** Includes cases who were interviewed about their date of recovery before a change in recovery definition on May 1

Weekly Care Facility, Senior Living Communities and Congregate Living Settings Report

OHA is publishing data on cases and deaths in care facilities, senior living communities, and congregate living settings that have three or more confirmed COVID-19 cases or one or more deaths (Table 5). Facilities with outbreaks that are considered resolved are moved to the closed outbreak list (Table 6). An outbreak is considered resolved if there are no new cases identified for 28 days after the last case onset. This list does not include correctional facilities.

In addition to the facilities listed, OHA is aware of eight congregate settings of five or fewer beds that have three or more confirmed COVID-19 cases or one or more deaths. Because foster homes typically have relatively few residents, OHA follows the Oregon Department of Human Services practice in not naming these locations to protect privacy.

COVID-19 Weekly Report

Oregon's Weekly Surveillance Summary
Novel Coronavirus (COVID-19)



Oregon Public Health Division

Published July 1, 2020

To date, there has been one COVID-19 death of a staff person who worked in a congregate care setting. To protect patient privacy, OHA does not report employee deaths by workplace or other potentially identifying information. Similar information will only be released in the future in weekly reports if OHA determines that such information, in addition to other information it releases, and information released by other agencies, like the Centers for Medicaid and Medicare, cannot be used to identify an individual.

Table 5. Active outbreaks in care facilities, senior living communities and congregate living settings with three or more confirmed COVID-19 cases or one or more COVID-19 related deaths (n=21)

Facility name	County	First reported	Total cases ^a	Total deaths ^a
Boone Ridge Senior Living	Marion	5/31/2020	3	1
The Springs at Willow Creek	Marion	6/2/2020	18	3
Regent Court Memory Care	Benton	6/2/2020	6	0
Marquis Hope Village	Clackamas	6/4/2020	112	10
Brookdale River Valley	Clackamas	6/3/2020	9	0
Brookstone Alzheimer's Care Center	Marion	6/8/2020	64	8
Springs at Carmen Oaks	Clackamas	6/8/2020	28	0
Avamere Court at Keizer	Marion	6/9/2020	1	1
Green Valley Rehab	Lane	6/12/2020	3	0
Mcloughlin Place	Clackamas	6/12/2020	18	0
New Day Enterprises	Union	6/13/2020	9	0
Marquis Oregon City	Clackamas	6/14/2020	23	1
Pacific Garden Memory Care Unit	Multnomah	6/15/2020	3	0
Avamere Rehabilitation of Newport	Lincoln	6/15/2020	9	0
Arcadia Senior Living	Multnomah	6/16/2020	6	0
Hidden Lakes Independent Living	Marion	6/18/2020	3	1
Pacifica Senior Living Portland	Multnomah	6/18/2020	10	0
Avamere Rehabilitation of Clackamas	Clackamas	6/23/2020	3	0
Grand Ronde Retirement Residence	Union	6/21/2020	5	0
Oswego Place by Bonaventure	Clackamas	6/22/2020	17	0
The Pearl at Kruze Way	Clackamas	6/23/2020	5	0
Total			355	25

^aTotal case count includes all cases associated with the outbreak (e.g., staff, residents, close contacts)

Table 6. Resolved outbreaks in care facilities, senior living communities and congregate living settings with three or more confirmed COVID-19 cases or one or more COVID-19 related death (n=36)

Facility name	County	First reported	Total cases ^a	Total deaths ^a
Oregon Veterans' Home Lebanon	Linn	3/11/2020	38	8
The Oaks at Sherwood Park	Marion	3/20/2020	14	1

Data are provisional and subject to change.

Page 9 of 23

COVID-19 Weekly Report

Oregon's Weekly Surveillance Summary
Novel Coronavirus (COVID-19)



Oregon Public Health Division

Published July 1, 2020

Regency Park	Washington	3/21/2020	16	1
Astor House Senior Living	Yamhill	3/22/2020	15	7
Healthcare at Foster Creek	Multnomah	3/24/2020	120	34
Oregon Veterans' Home The Dalles	Wasco	3/26/2020	3	0
Raleigh Hills Senior Care	Washington	3/27/2020	1	1
Corvallis Manor	Benton	3/27/2020	19	3
Salem Transitional Care	Marion	3/27/2020	26	3
Shelter at Orenco Station	Washington	3/30/2020	4	0
Laurelhurst Village	Multnomah	3/30/2020	51	5
Marquis Marian Estates	Marion	3/30/2020	16	1
Village Health Care	Multnomah	4/1/2020	40	5
Avamere at Bethany	Washington	4/1/2020	12	1
Bonaventure	Washington	4/1/2020	1	1
Four Seasons Memory Care	Marion	4/2/2020	4	1
Jason Lee Manor Apartments	Marion	4/10/2020	2	1
Avamere Court at Keizer	Marion	4/11/2020	7	1
Powell Valley Memory Care	Multnomah	4/13/2020	9	1
Country Meadows Village	Marion	4/13/2020	7	1
Cornerstone Care Options	Multnomah	4/16/2020	16	0
The Grove Assisted Living	Washington	4/17/2020	3	2
Countryside Living of Canby	Clackamas	4/19/2020	13	2
St. Andrews Memory Care	Multnomah	4/21/2020	3	0
Cherrywood Village	Multnomah	4/23/2020	6	1
Turner Residential Care	Marion	4/23/2020	1	1
Providence Benedictine	Marion	4/27/2020	6	0
Prestige Senior Living Orchard Heights	Polk	4/30/2020	55	11
Prestige Senior Living Riverwood	Washington	5/2/2020	11	1
Jennings - McCall Center	Washington	5/4/2020	9	1
Parkview Christian Assisted Living	Multnomah	5/4/2020	9	1
Odd Fellows Home	Multnomah	5/4/2020	9	1
Prestige Post Acute Care and Rehabilitation-Milwaukie	Clackamas	5/9/2020	11	2
Avamere Park Place	Washington	5/26/2020	6	0
High Lookee Lodge	Jefferson	5/26/2020	15	0
Bethesda Lutheran Communities	Washington	5/28/2020	3	0
Total			563	99

^aTotal case count includes all cases associated with the outbreak (e.g., staff, residents, close contacts)

Weekly Workplace Outbreak Report

OHA is publishing data on cases in workplace outbreaks. Given a cluster of cases in space and time, within plausible incubation periods for the pathogen, OHA epidemiologists will consider cases to be related—i.e., part

Data are provisional and subject to change.

COVID-19 Weekly Report

Oregon's Weekly Surveillance Summary
Novel Coronavirus (COVID-19)



Oregon Public Health Division

Published July 1, 2020

of a workplace outbreak—unless a more likely alternative source for acquisition is identified. Any suspected workplace outbreak is required to be reported to the local public health authority (see OAR 333-018-015). Local health department and tribal partners conduct ongoing public health investigations to identify workplace outbreaks. This list of outbreaks will be updated as investigations continue, and we learn about epidemiologic links between cases. This list may not reflect all the workplace outbreaks in Oregon.

In order to protect privacy, OHA is only reporting workplace outbreaks with five or more cases and only for workplaces where there are at least 30 employees. If more than 50% of the employees are COVID-19 cases, then we will not report specific case numbers. Case counts include all persons linked to the outbreak, which may include household members and other close contacts. The list below includes active workplace outbreaks (Table 7), meaning that there has been a case within the past 28 days. Outbreaks that are resolved will be moved to a separate table of resolved outbreaks (Table 8).

The presence of correctional facilities and food packing and agricultural worksites on this list highlights the challenges of controlling COVID-19 in settings where people must work or live in close proximity. In addition, people of color are overrepresented in agricultural and correctional settings, perhaps contributing to higher rates of COVID-19 observed in these groups. OHA publishes these data in response to public request, but with some concern that workers or staff members at these workplaces might be subject to discrimination.

State and local public health officials work intensively with staff at workplaces where outbreaks are identified to isolate sick workers, test and quarantine those who have been exposed and implement workplace changes to reduce risk of transmission. Unless otherwise noted, public health officials have determined that these workplaces, their employees and their products do not pose significant risk to the public. Employees of a business with a workplace outbreak should never be subjected to discrimination or excluded from patronizing other businesses. In fact, discriminating against employees or avoiding products might jeopardize the economic viability of essential local businesses.

Employers can support their employees with policies that make sure that ill workers are not in the workplace and are not penalized for taking sick leave. Employers should ensure that workers are aware of and understand these policies.

There have been eight COVID-19 deaths associated with the workplace outbreaks below. To protect patient privacy, OHA does not report employee deaths by workplace.

Table 7. Active Workplace outbreaks with five or more confirmed COVID-19 cases (n=32)

Workplace	Address	County ^a	Investigation start date	Most recent onset	Total cases
Oregon State Penitentiary	2605 State St, Salem, OR 97310	Marion	4/2/2020	6/22/2020	183
Pacific Seafood	213 SW Bay Blvd, Newport, OR 97365	Lincoln	6/2/2020	6/20/2020	180
Lamb Weston	78153 Westland Road, Hermiston, OR 97838	Umatilla	6/16/2020	6/24/2020	72
Duckwall Fruit	3430 Davis Dr. Hood River, OR 97031	Hood River	5/28/2020	6/11/2020	64
Bob's Red Mill	5000 SE International Way, Milwaukie, OR 97222	Clackamas	5/27/2020	6/24/2020	61
Medelez Trucking	30522 Old Field Street, Hermiston OR 97838	Umatilla	4/29/2020	6/9/2020	29
Teeny Foods	3434 NE 170th way, Gresham OR 97230	Multnomah	6/8/2020	6/26/2020	26

Data are provisional and subject to change.

Page 11 of 23

COVID-19 Weekly Report

Oregon's Weekly Surveillance Summary
Novel Coronavirus (COVID-19)



Oregon Public Health Division

Published July 1, 2020

Townsend Farms	33865 NW Vadis Rd, Cornelius OR 97113	Washington	5/25/2020	6/13/2020	18
Salem Hospital	890 Oak Street SE, Salem, OR 97301	Marion	5/27/2020	6/22/2020	17
Old Trapper	4071 24th Ave, Forest Grove, OR 97116	Washington	4/13/2020	6/8/2020	16
Reser's Food	6999 NE Century Blvd, Hillsboro, OR 97124	Washington	4/16/2020	6/6/2020	15
Norpac	2498 Madrona Ave SE, Salem, OR 97301	Marion	6/5/2020	6/18/2020	15
Columbia River Processing (TCCA)	79588 Rippe Rd, Boardman, OR 97013	Morrow	06/16/2020	06/17/2020	15
Amazon Troutdale	1250 NW Swigert Rd, Troutdale, OR 97060	Multnomah	5/21/2020	6/20/2020	12
Local Ocean	213 SE Bay Blvd, Newport, OR 97365	Lincoln	6/10/2020	6/19/2020	12
Harry and David's	2800 S. Pacific Hwy, Medford, OR 97501	Jackson	6/9/2020	6/13/2020	11
Grand Ronde Hospital	900 Sunset Dr, La Grande, OR 97850	Union	06/24/2020	06/15/2020	11
Amazon Aumsville	4775 Depot Ct SE, Salem, OR 97317	Marion	5/21/2020	6/11/2020	10
Oregon Harvesting Inc.	11335 SW Hillsboro Hwy, Hillsboro, OR 97123	Washington	06/25/2020	06/20/2020	10
Morasch Meats	4050 NE 158th Ave, Portland, OR 97230	Multnomah	06/19/2020	06/20/2020	10
National Performance Warehouse	5640 NE Wagon Dr, Hillsboro, OR 97124	Washington	6/18/2020	6/20/2020	9
Fred Meyer	14700 SE McLoughlin Blvd, Milwaukie, OR 97267	Clackamas	6/3/2020	6/5/2020	8
Precision Lumber	11550 SE Jennifer St, Clackamas, OR 97015	Clackamas	6/17/2020	6/20/2020	8
Tenneson Orchards	5299 Millcreek Rd, Dallas, OR 97058	Wasco	06/19/2020	06/20/2020	8
Clearwater	325 SW Bay Blvd, Newport, OR 97365	Lincoln	6/5/2020	6/14/2020	7
McDonald's	1300 N Coast Hwy, Newport, OR 97365	Lincoln	6/16/2020	6/14/2020	7
Outdoors RV Manufacturing	62582 Pierce Rd, La Grande, OR 97850	Union	06/28/2020	06/12/2020	7
Georgie's Beachside Grill	744 SW Elizabeth St, Newport, OR 97365	Lincoln	06/12/2020	06/18/2020	7
Hoffman Construction	5 NE MLK Blvd, Portland, OR 97232	Multnomah	6/13/2020	6/12/2020	6
Oregon Potato Company	650 Columbia Ave NE, Boardman, OR 97818	Morrow	06/26/2020	06/22/2020	6
Pacific Pine and Products	17634 US 395, Lakeview, OR 97630	Lake	06/26/2020	06/24/2020	5
Hill Meat Company	1503 NW 50th Street, Pendleton, OR 97801	Umatilla	06/26/2020	06/25/2020	5

^aCounty of workplace. COVID-19 cases may reside in multiple counties

COVID-19 Weekly Report

Oregon's Weekly Surveillance Summary
Novel Coronavirus (COVID-19)



Oregon Public Health Division

Published July 1, 2020

Table 8. Resolved Workplace outbreaks with five or more confirmed COVID-19 cases (n=29)

Workplace	Address	County ^a	Investigation start date	Most recent onset	Total cases
Townsend Farms	23303 NE Sandy Blvd, Fairview, OR 97024	Multnomah	5/25/2020	5/31/2020	56
Townsend Farms	23303 NE Sandy Blvd, Fairview, OR 97024	Multnomah	4/30/2020	5/12/2020	51
National Frozen Foods	745 30th Ave SW, Albany, OR 97322	Linn	4/15/2020	5/10/2020	41
VA Medical Center	3710 SW US Veterans Hospital Rd, Portland, OR 97239	Multnomah	5/7/2020	5/13/2020	34
Bornsteins Seafood	9 Portway St, Astoria, OR 97103	Clatsop	5/2/2020	5/13/2020	33
Shutter Creek Correctional Institute	95200 Shutters Landing Ln, North Bend, OR 97459	Coos	4/7/2020	5/5/2020	28
Pacific Seafood	450 NE Skipanon Dr, Warrenton, OR 97146	Clatsop	5/8/2020	5/14/2020	15
Santiam Correctional Institute	4005 Aumsville Hwy SE, Salem, OR 97317	Marion	4/3/2020	5/31/2020	15
Adventist Hospital	10123 SE Market St, Portland, OR 97216	Multnomah	5/7/2020	5/9/2020	10
Oregon Health and Sciences University	3181 S.W. Sam Jackson Park Rd, Portland, OR 97239	Multnomah	4/8/2020	4/11/2020	10
Amstad Produce, Inc.	16300 SW 192nd Ave, Sherwood, OR 97410	Washington	4/26/2020	5/1/2020	9
MacLaren Youth Correctional Facility	2630 N Pacific Hwy, Woodburn, OR 97071	Marion	5/5/2020	5/11/2020	8
Chaucer Foods	2238 Yew St, Forest Grove, OR 97116	Washington	5/31/2020	6/1/2020	8
BrucePac	811 N First St, Silverton, OR 97381	Marion	5/11/2020	6/1/2020	8
Physicians Building Group	1234 Commercial St SE, Salem, OR 97302	Marion	3/24/2020	3/24/2020	7
Pacific Motion Furniture	21249 SW 115th Ave, Tualatin, OR 97062	Washington	4/29/2020	4/20/2020	7
Meduri Farms	12375 Smithfield Road, Dallas, OR 97338	Polk	5/25/2020	5/19/2020	7
Purdy Professional Painting	13201 N Lombard St, Portland, OR	Multnomah	6/21/2020	5/29/2020	7
Electronic Assemblers	616 Industrial St # 30, Hood River, OR 97031	Hood River	6/1/2020	6/1/2020	7
Dave's Killer Bread	5209 SE International Way, Milwaukie, OR 97222	Clackamas	5/2/2020	6/2/2020	7
Cherriots Bus Service	555 Court St NE #5230, Salem, OR 97301	Marion	3/30/2020	3/27/2020	6
Hospital Service Corporation	18440 NE Portal Way, Portland, OR, 97230	Multnomah	4/3/2020	4/4/2020	6
Timber Products Company	25 E McAndrews Rd, Medford, OR 97501	Jackson	4/11/2020	4/3/2020	6
Fresh Del Monte	9243 N Rivergate Blvd, Portland, OR 97203	Multnomah	5/22/2020	5/21/2020	6

Data are provisional and subject to change.

Page 13 of 23

COVID-19 Weekly Report

Oregon's Weekly Surveillance Summary
Novel Coronavirus (COVID-19)



Oregon Public Health Division

Published July 1, 2020

Northwest Hazelnut Company	19748 OR-99E, Hubbard, OR 97032	Marion	5/12/2020	5/18/2020	6
Good Shepherd Hospital	610 NW 11th St, Hermiston, OR 97838	Umatilla	5/21/2020	5/20/2020	6
First American Title Company	2892 Crescent Ave, Eugene, OR 97408	Lane	4/19/2020	4/10/2020	5
Wong's Potatoes	17600 Highway 39 Klamath Falls, Klamath Falls, OR 97603	Klamath	4/20/2020	4/20/2020	5
Fjord Limited	3099 N Pacific Highway, Woodburn, OR 97071	Marion	5/5/2020	4/28/2020	5

^aCounty of workplace. COVID-19 cases may reside in multiple counties

Weekly Schools and Child Care Outbreak Report

OHA is publishing data on cases in school and child care settings. Given a cluster of cases in space and time, within plausible incubation periods for the pathogen, OHA epidemiologists will consider cases to be related—i.e., part of a school or child care outbreak—unless a more likely alternative source for acquisition is identified. Any suspected school or child care outbreak is required to be reported to the local public health authority (see OAR 333-018-015). Local health department and tribal partners conduct ongoing public health investigations to identify outbreaks in these settings. This list of outbreaks will be updated as investigations continue, and as we learn about epidemiologic links between cases. This list may not reflect all of the outbreaks in school and child care settings in Oregon.

In order to protect privacy, OHA is only reporting school and child care outbreaks with five or more cases and only for schools or child cares where there are at least 30 students. If more than 50% of the population at the school or child care are COVID-19 cases, then we will not report specific case numbers. Case counts include all persons linked to the outbreak, which may include household members or other close contacts. The list below includes active school and child care outbreaks (Table 9), meaning that there has been a case within the past 28 days. Outbreaks that are resolved will be moved to a separate table of resolved outbreaks. In addition to the facilities listed in Table 9, OHA will report outbreaks in smaller schools and child cares in aggregate if the threshold of 5 or more cases is met.

Table 9. Schools and Childcare facilities reporting COVID-19 outbreaks.

Facility	Address	County	Investigation start date	Most recent onset	Total cases
Lake Grove KinderCare	3700 Red Cedar Way, Lake Oswego, OR 97035	Clackamas	6/16/2020	6/19/2020	28

COVID-19 Weekly Report

Oregon's Weekly Surveillance Summary
Novel Coronavirus (COVID-19)



Oregon Public Health Division

Published July 1, 2020

Weekly COVID-19 Hospitalizations

OHA is publishing data on the number of COVID-19 hospitalizations by hospital in the prior week; data are from HOSCAP, Oregon's hospital capacity web system. Table 10 lists all hospitals which, at some time during the week reported, had 10 or more suspected/confirmed COVID-19 patients. The left column shows the highest number of suspected and confirmed COVID-19 hospitalized patients for each hospital between 6/22/2020 and 6/28/2020. The right column shows the highest number of confirmed COVID-19 patients hospitalized during the same time period.

Table 10. Hospitals reporting 10 or more COVID-19 patients.

Hospital	Maximum Patients (Suspected and confirmed)	Maximum Patients (Confirmed only)
Salem Health Hospital	26	20
Providence Portland Medical Center	23	19
Good Samaritan Regional Medical Center	22	<10
OHSU Hospital	16	<10
Legacy Emanuel Medical Center	16	11
Hillsboro Medical Center	16	<10
Providence St. Vincent Medical Center	12	<10
Legacy Good Samaritan Medical Center	12	<10
Legacy Meridian Park Hospital	10	<10
Adventist Health Portland	10	10

The hospitals listed in Table 11 reported at least 1 and at most 9 suspected or confirmed COVID-19 patients between 6/22/2020 through 6/28/2020. Hospitals not listed in either table did not report any suspected or confirmed patients during the week.

Table 11. Hospitals reporting 1–9 COVID-19 patients.

Hospital
Asante Ashland Community Hospital
Asante Rogue Regional Medical Center
Bay Area Hospital
Columbia Memorial Hospital
Good Shepherd Health Care System
Grande Ronde Hospital
Kaiser Permanente Westside Medical Center
Legacy Mount Hood Medical Center
Legacy Silverton Medical Center
McKenzie-Willamette Medical Center
Mercy Medical Center
Mid-Columbia Medical Center

Data are provisional and subject to change.

COVID-19 Weekly Report

Oregon's Weekly Surveillance Summary
Novel Coronavirus (COVID-19)



Oregon Public Health Division

Published July 1, 2020

OHSU Doernbecher Children's Hospital
Providence Hood River Memorial Hospital
Providence Medford Medical Center
Providence Milwaukie Hospital
Providence Willamette Falls Medical Center
Randall Children's Hospital at Legacy Emanuel
Samaritan Albany General Hospital
Samaritan Lebanon Community Hospital
Samaritan North Lincoln Hospital
Samaritan Pacific Communities Hospital
Sky Lakes Medical Center
St. Anthony Hospital
St. Charles Bend
VA Portland Health Care System
Willamette Valley Medical Center

Cases by ZIP Code

OHA is publishing data on cases at the ZIP code level (Table 11). In order to protect patient privacy, ZIP codes with small populations or small numbers of cases will be aggregated. Cases from ZIP codes with less than 1,000 people will be reported as one number. ZIP codes that have fewer than 10 cases will be reported as "1-9". ZIP codes that do not have any cases will have a "0". ZIP code population was retrieved from the 2010 US Census Bureau ZIP Code Tabulation Area.

Table 11. COVID-19 cases by ZIP code

ZIP code	Case count	Cases per 10,000
97002	13	23.1
97003	62	24.0
97004	1-9	NA
97005	48	19.3
97006	94	14.9
97007	83	12.4
97008	30	10.4
97009	11	14.2
97013	118	52.0
97014	1-9	NA
97015	34	17.4
97016	1-9	NA
97017	1-9	NA
97018	1-9	NA

Data are provisional and subject to change.

COVID-19 Weekly Report

Oregon's Weekly Surveillance Summary
Novel Coronavirus (COVID-19)



Oregon Public Health Division

Published July 1, 2020

97019	1-9	NA
97021	0	NA
97022	0	NA
97023	10	10.2
97024	103	100.6
97026	50	131.1
97027	22	18.1
97030	126	34.3
97031	75	40.8
97032	32	63.5
97034	22	11.6
97035	34	14.2
97038	48	31.8
97040	1-9	NA
97041	1-9	NA
97042	1-9	NA
97045	105	20.4
97048	1-9	NA
97049	0	NA
97051	1-9	NA
97053	1-9	NA
97054	0	NA
97055	21	12.1
97056	10	8.7
97058	64	32.3
97060	69	32.5
97062	93	33.9
97063	0	NA
97064	1-9	NA
97067	0	NA
97068	20	7.1
97070	28	13.4
97071	286	99.3
97078	82	38.3
97080	144	35.2
97086	46	17.7
97089	19	15.9
97101	1-9	NA

COVID-19 Weekly Report

Oregon's Weekly Surveillance Summary
Novel Coronavirus (COVID-19)



Oregon Public Health Division

Published July 1, 2020

97103	26	15.4
97106	1-9	NA
97107	0	NA
97110	0	NA
97111	0	NA
97112	0	NA
97113	116	82.0
97114	1-9	NA
97115	1-9	NA
97116	120	49.8
97119	1-9	NA
97121	1-9	NA
97123	203	45.6
97124	102	21.1
97127	1-9	NA
97128	46	12.7
97131	1-9	NA
97132	41	14.5
97133	1-9	NA
97136	0	NA
97137	0	NA
97138	1-9	NA
97140	33	14.1
97141	1-9	NA
97146	14	23.7
97148	1-9	NA
97201	17	11.0
97202	42	10.8
97203	97	31.3
97204	1-9	NA
97205	1-9	NA
97206	92	19.3
97209	34	22.7
97210	1-9	NA
97211	57	18.2
97212	25	10.4
97213	56	19.2
97214	56	23.5

COVID-19 Weekly Report

Oregon's Weekly Surveillance Summary
Novel Coronavirus (COVID-19)



Oregon Public Health Division

Published July 1, 2020

97215	18	11.0
97216	44	28.2
97217	69	22.0
97218	38	26.1
97219	76	19.6
97220	81	28.4
97221	11	9.5
97222	79	22.6
97223	87	18.6
97224	51	16.4
97225	35	14.5
97227	1-9	NA
97229	60	10.3
97230	154	38.7
97231	1-9	NA
97232	12	10.5
97233	245	62.2
97236	336	91.2
97239	1-9	NA
97266	109	32.7
97267	65	21.1
97301	192	35.9
97302	94	25.3
97303	151	39.1
97304	97	34.1
97305	192	47.8
97306	93	34.0
97317	86	35.3
97321	38	15.2
97322	44	12.9
97324	0	NA
97325	18	27.2
97327	1-9	NA
97330	45	10.9
97331	1-9	NA
97333	12	5.6
97338	13	6.5
97341	1-9	NA

COVID-19 Weekly Report

Oregon's Weekly Surveillance Summary
Novel Coronavirus (COVID-19)



Oregon Public Health Division

Published July 1, 2020

97344	0	NA
97347	1-9	NA
97348	1-9	NA
97351	17	16.5
97352	1-9	NA
97355	48	16.8
97358	0	NA
97360	1-9	NA
97361	1-9	NA
97362	19	43.8
97365	269	250.4
97366	1-9	NA
97367	1-9	NA
97368	1-9	NA
97370	11	13.3
97374	1-9	NA
97375	1-9	NA
97376	0	NA
97378	1-9	NA
97380	1-9	NA
97381	42	28.6
97383	23	24.0
97385	14	43.0
97386	1-9	NA
97389	1-9	NA
97391	1-9	NA
97392	11	21.2
97394	1-9	NA
97396	1-9	NA
97401	29	7.2
97402	26	5.2
97403	1-9	NA
97404	1-9	NA
97405	18	4.0
97408	1-9	NA
97411	0	NA
97415	1-9	NA
97417	1-9	NA

COVID-19 Weekly Report

Oregon's Weekly Surveillance Summary
Novel Coronavirus (COVID-19)



Oregon Public Health Division

Published July 1, 2020

97419	0	NA
97420	1-9	NA
97423	1-9	NA
97424	1-9	NA
97426	1-9	NA
97431	0	NA
97435	0	NA
97437	0	NA
97438	1-9	NA
97439	1-9	NA
97442	0	NA
97443	0	NA
97444	1-9	NA
97446	1-9	NA
97448	1-9	NA
97449	0	NA
97452	0	NA
97454	0	NA
97455	1-9	NA
97456	0	NA
97457	1-9	NA
97458	0	NA
97459	32	22.7
97462	1-9	NA
97463	1-9	NA
97465	0	NA
97467	1-9	NA
97469	1-9	NA
97470	1-9	NA
97471	1-9	NA
97477	11	3.0
97478	19	5.1
97479	1-9	NA
97487	1-9	NA
97488	0	NA
97495	1-9	NA
97496	1-9	NA
97497	0	NA

COVID-19 Weekly Report

Oregon's Weekly Surveillance Summary
Novel Coronavirus (COVID-19)



Oregon Public Health Division

Published July 1, 2020

97498	0	NA
97499	0	NA
97501	28	6.7
97502	20	7.2
97503	14	13.3
97504	23	5.2
97520	10	4.1
97523	1-9	NA
97524	1-9	NA
97525	1-9	NA
97526	13	3.8
97527	1-9	NA
97530	0	NA
97532	1-9	NA
97535	1-9	NA
97537	0	NA
97538	0	NA
97539	0	NA
97540	1-9	NA
97541	0	NA
97544	0	NA
97601	45	20.0
97603	41	13.9
97623	1-9	NA
97624	1-9	NA
97630	14	27.5
97632	1-9	NA
97633	1-9	NA
97641	0	NA
97701	46	7.8
97702	49	12.1
97703	23	6.9
97707	1-9	NA
97708	1-9	NA
97720	1-9	NA
97734	10	35.9
97738	0	NA
97739	1-9	NA

COVID-19 Weekly Report

Oregon's Weekly Surveillance Summary
Novel Coronavirus (COVID-19)



Oregon Public Health Division

Published July 1, 2020

97741	31	26.0
97753	0	NA
97754	10	5.4
97756	41	12.2
97759	1-9	NA
97760	1-9	NA
97761	59	148.0
97801	35	16.3
97813	1-9	NA
97814	1-9	NA
97818	28	67.3
97820	0	NA
97824	1-9	NA
97826	1-9	NA
97827	1-9	NA
97828	1-9	NA
97836	1-9	NA
97838	314	123.9
97844	25	65.7
97845	1-9	NA
97846	1-9	NA
97850	284	167.5
97862	16	13.7
97865	0	NA
97868	1-9	NA
97869	0	NA
97875	16	61.3
97882	79	101.8
97883	1-9	NA
97885	1-9	NA
97886	1-9	NA
97913	19	34.4
97914	63	32.8
97918	15	33.1
Unknown ZIP code	65	NA
ZIP codes with <1000 population or no population data	161	NA

Data are provisional and subject to change.

Page 23 of 23