



Return to School Health & Safety Plan

Under COVID-19 Conditions

This is a fluid plan that will be adjusted as conditions require.

UPDATED: JULY 16, 2020



Dear Clovis Unified students, parents and staff



Eimear O'Farrell, Ed.D
CUSD Superintendent

Our founding Superintendent Doc Buchanan used to say, "Education revolves around teamwork and trust." As we prepare for the start of the 2020-21 school year while still in the midst of the COVID pandemic, teamwork and trust remain at the forefront of our decision-making. Together, our staff, Governing Board, students and families have navigated uncharted territory. We have done so by making decisions based on the responsibility that comes hand-in-hand with the trust placed in us by our families, staff and students to keep their well-being at the forefront.

I recognize that questions about the start of the 2020-21 school year have dominated the thoughts of many of our families. We have heard from a great majority of our community and employees that they want kids to return to school and are concerned about the negative academic, social and emotional impact to students during this time. At the same time, we respect the guidance from Fresno County's Department of Public Health that has repeatedly emphasized the need for physical distancing, face coverings and other mitigation measures to help prevent the spread of COVID.

As a result, our Governing Board and Administration have developed a Return to School Health and Safety Plan that provides families with two temporary options: a full online learning model and a traditional model in which students are on campus five days a week. These temporary options will be in place for at least the first six weeks of school, unless the status of the COVID pandemic in our county improves significantly.

Since June, a team of close to 100 employees have been hard at work preparing for the start of the 2020-21 school year this August. As you can imagine, this work has been extensive, examining every element of our educational program in the context of the COVID pandemic.

This plan is designed to mitigate but not eliminate risk to our students and staff. As it has been made clear to us by our partners from the public health and medical fields, no single or set of actions will completely eliminate the risk of COVID-19 transmission. Instead, our plan layers increased cleaning, physical distancing and hygiene practices on campus with options for families. Those whose family health circumstances makes Online Instruction the right choice, are provided that choice.

We ask that after reviewing the plan, families complete this year's Annual Information Update before July 24. While completing your Information Update, you will be asked to designate in which of the models you would like your child enrolled.

Thank you to the team members who have worked tirelessly in developing our 2020-21 Return to School Plan, and to the members of our local medical community who provided guidance in these efforts. As a team, we are committed through our actions and decisions to validate the trust and confidence our families and staff have placed in us to serve our students.

Eimear O'Farrell, Ed.D
CUSD Superintendent

Families Should:

- 1 Review** all elements of the 2020-21 Return to School Health & Safety Plan
- 2 Identify** the instructional model that suits your family's needs
- 3 Complete** your student's Annual Information Update through ParentConnect by July 24



Plan Development

Since June, a team of dozens of employees have been hard at work preparing for our return to school this August. This team has worked to create a plan that:

- Provides our community with diverse learning options to meet multiple needs
- Maximizes opportunities for physical distancing in the classroom and during the school day
- Incorporates the use of Personal Protective Equipment (PPE) and other guidance of state and local health officials
- Increases sanitizing and disinfecting practices
- Promotes effective handwashing and cough/hand hygiene
- Adjusts and responds to changing health conditions in our community

The team:

- Closely studied health and safety guidance from numerous sources
- Sought and analyzed feedback from parents, students and staff
- Remained attuned to the current status of COVID cases in our region
- Researched and developed instructional models that maintain quality of learning whether in-person, online, or some combination of each
- Developed health and safety plans to reduce the spread of COVID-19

Feedback from families, staff an important part of decision-making

Clovis Unified's return to campus plans have been heavily influenced by feedback from our parents, staff and students. Throughout the months of May, June and July, surveys, online feedback collection, virtual town hall meetings, and small group discussions have given us insight into the needs and priorities of our community.

A common theme is clear: our staff and families want students back in school as soon as possible. **About 70% of respondents to staff and parent surveys have indicated a desire to return to a traditional model** of five-day a week instruction, with additional disinfecting and health practices implemented. At the same time, a significant percentage have also expressed a desire for a full online experience, **with about 30% of our populations consistently indicating they want a full online experience** for the opening of school.

Two options have been created for families to choose from:

Option A: A traditional schedule in which students are on campus five days a week with additional disinfecting and health protocols.

Option B: A full online instructional environment in which teachers teach from their classrooms and students engage remotely from home.

Options would adjust according to mandates and changing conditions. We are committed to continuing to deliver regular communication through our websites, apps, social media channels, and emails.



70% of Teachers & Parents Consistently Favor Traditional Schedule



About 30% of Families & Teachers Want Full Online



If a Traditional Model is not Available, 77.2% of Families Preferred a Hybrid option and 22.8% Online



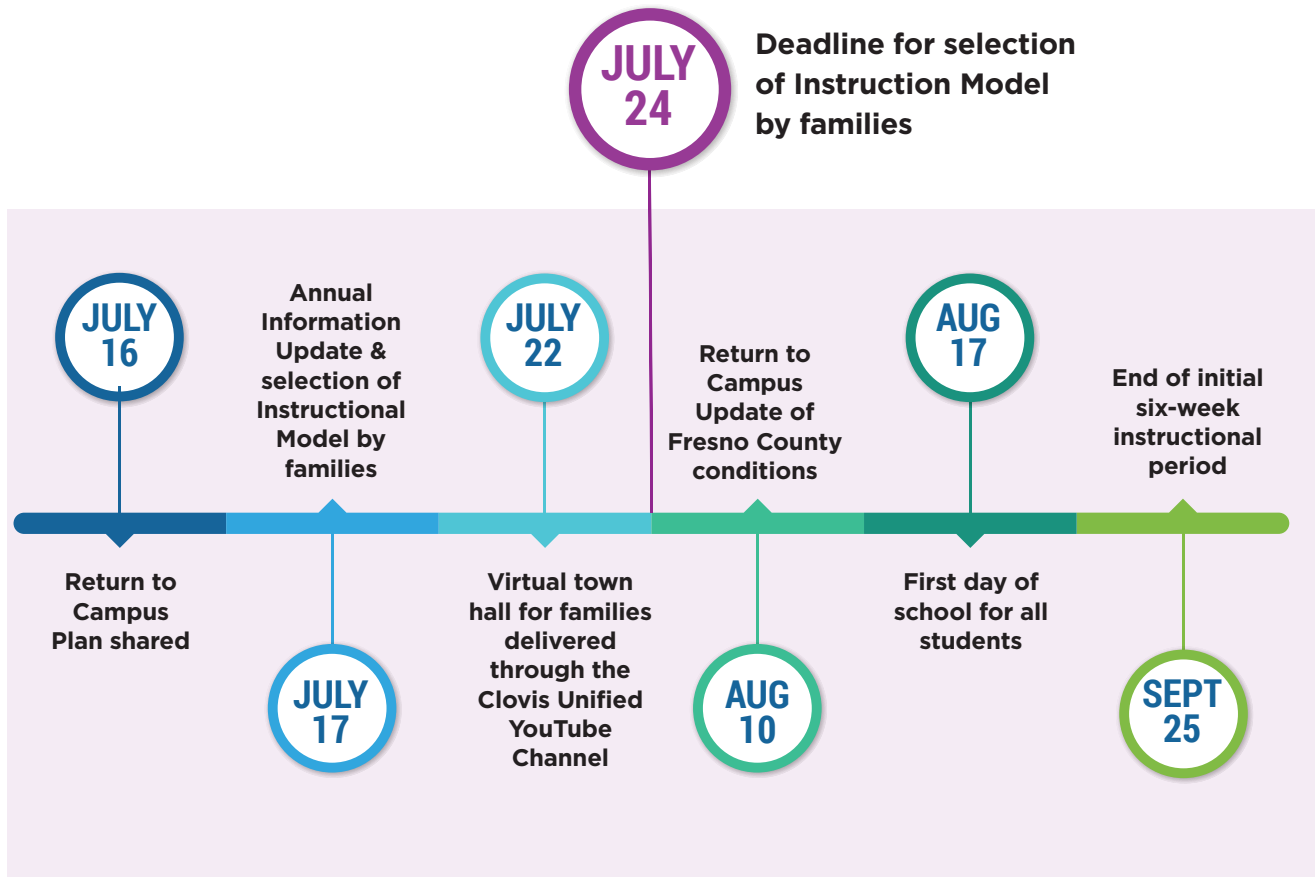
Our Guiding Principles

Every decision made in the development of our 2020-21 Return to School Health and Safety Plan was aligned to our guiding principles:

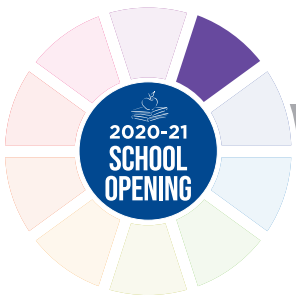
- **Commitment to Safety and Wellness of Students, Staff and the Community**
- **Educational Value of High-Quality Instruction Delivered in an Optimal Learning Environment**
- **Maximize Achievement for ALL Students in Mind, Body and Spirit**

Important Dates

As we prepare to launch the new school year, our educational team has prepared plans that can pivot between at-school and at-home learning options based on current COVID conditions and local health orders.



Plans for at-school instruction may have to be revised prior to the start of school if state or local mandates require schools to offer only at-home instruction. The district will update families to any changes.



2020-2021 SCHOOL OPENING & SAFETY PLAN

Clovis Unified is committed to providing ALL students with a high-quality, engaging educational experience. We know during these unprecedented times, the needs of our students and families vary, which is why we are offering two learning models for the first six weeks of school. Whether online or in person, we will be prepared and ready to greet our beloved students on Aug. 17, the first day of school, with lessons and experiences to meet their needs and continue their educational growth. Families have choices that allow them to be in control of the instructional model that works best for them. **All parents will be required to make their Instructional Model selection during Clovis Unified's Annual Information Update that occurs online July 17 to 24.**

The district is offering the following two models for the beginning of the school year:

Traditional Model

Students on-site 5 days a week

Enhanced



Sanitation

Scheduled Handwashing



Hand Sanitizing

Face Coverings



Required for All Students and Staff

Maximize Physical Distancing

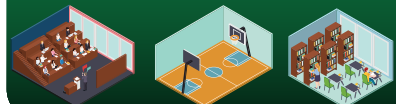


Health Screening



Contact Tracing Procedures

Use of Every Available Instructional Space



Online Model

Temporary Full At-Home Instruction



Teachers will provide instruction five days a week.

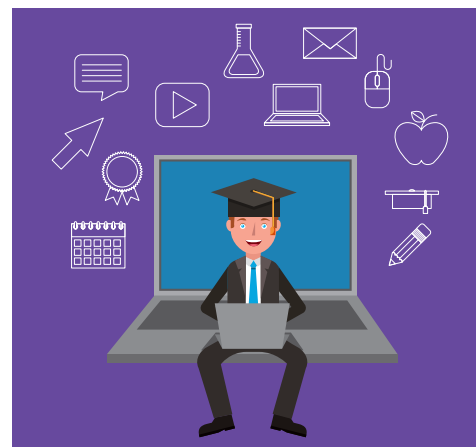
Instruction
5 Days
A Week

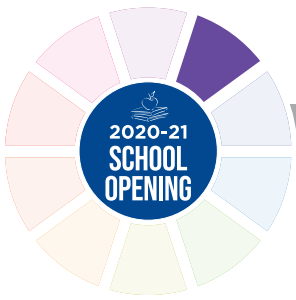
Online
Instruction

Teachers will deliver instruction via an online platform with daily contact from their teacher.

School-based resources and support still available as needed.

Resources
and
Support





Instructional Models

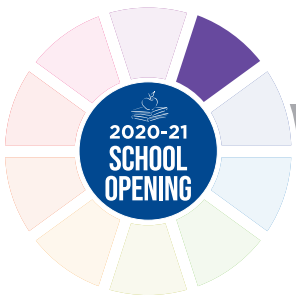
Families will select between two short-term options for at least the first six weeks of school.

Depending upon the status of the COVID pandemic in Fresno County, these options may be revisited and/or extended following the first six weeks of school; should significant improvements to our county’s situation occur, the District’s goal would be to return to a traditional in-person learning model five days a week for all students.

TRADITIONAL MODEL	ONLINE MODEL
<p>Students are on campus five days a week.</p>	<p>Students are learning online five days a week from home with teachers delivering instruction via an online platform.</p>
<ul style="list-style-type: none"> • 5 days on campus 	<ul style="list-style-type: none"> • 5 days online
<ul style="list-style-type: none"> • Standards-based curriculum 	<ul style="list-style-type: none"> • Standards-based curriculum
<ul style="list-style-type: none"> • Uses Clovis Unified curriculum 	<ul style="list-style-type: none"> • Uses an online instructional platform
<ul style="list-style-type: none"> • Units of study developed and delivered by CUSD teachers 	<ul style="list-style-type: none"> • Supported/delivered by Clovis Unified teachers
<ul style="list-style-type: none"> • Face-to-Face communication with teachers daily 	<ul style="list-style-type: none"> • Daily communication with teacher using virtual platforms
<ul style="list-style-type: none"> • Lesson schedule is paced by teacher 	<ul style="list-style-type: none"> • Weekly lesson schedule is paced by teacher with some flexibility
<ul style="list-style-type: none"> • Attendance taken by teacher 	<ul style="list-style-type: none"> • Attendance taken by teacher
<ul style="list-style-type: none"> • NCAA, A-G approved 	<ul style="list-style-type: none"> • NCAA, A-G approved
<ul style="list-style-type: none"> • Supports special programs, such as ESL, GATE, AVID 	<ul style="list-style-type: none"> • Supports special programs, such as ELD. Some courses will not be available online as in Traditional Model.
<ul style="list-style-type: none"> • TK through 12th Grade 	<ul style="list-style-type: none"> • TK through 12th Grade. Not all classes offered in the Traditional Model will be available in the Online Model.
<ul style="list-style-type: none"> • Meets current Fresno County Health and Safety Guidelines for 6’ of physical distancing between students, along with other guidance. 	
<p>AT-HOME LEARNING: If at any point Public Health Orders cause us to close school campuses we will pivot between in-class instruction and online teacher-led instruction.</p>	



Clovis Unified will work with students and families to ensure equity and access to quality instruction. Technology support will be made available as needed by contacting your school.



Making the Right Choice for Your Child



Traditional Model 5 days on campus

BENEFITS
<ul style="list-style-type: none"> • Traditional structured learning environment in a familiar in-person setting • Provides for social interaction and student collaboration • Creates routine for students with set daily schedule

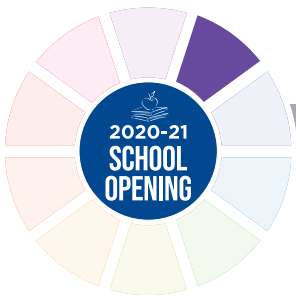
CONSIDERATIONS
<ul style="list-style-type: none"> • Requires face coverings • Requires social distancing. Depending upon enrollment numbers of this option, to meet distancing requirements may need to use AM and PM scheduling of students and less class time; may hold classes in other facilities, such as MPR or gym; or may need to balance classroom capacity limit by capping and busing to available space at other CUSD campuses. • Changes to Public Health Orders may dictate a pivot between on-site and full online learning



Online Model 5 days online

BENEFITS
<ul style="list-style-type: none"> • Low risk, avoids large groups • Weekly teacher-guided pace with some flexibility • No change would be necessary should Public Health Orders require site closures • Some flexibility for students' work schedule

CONSIDERATIONS
<ul style="list-style-type: none"> • Limited direct interaction with other students • Requires student to be motivated and self-disciplined • Some courses will not be available in this model • Students may need support at home, childcare



Frequently Asked Questions: Instructional Options for Families

Q: Can a student change between the Traditional Model and the Online Model?

The Learning Model chosen by your family will be in place for the first six weeks of school. No changes will be allowed to ensure learning continuity and pacing of coursework. Selections will be able to be revisited should these models be necessary past Sept. 25.

Q: What will social distancing look like in the classroom?

Non-essential furniture will be removed to allow for more usable space. Student desks will face the same direction (rather than in groups) and be arranged to adhere to social distancing guidelines between students and from the teacher.

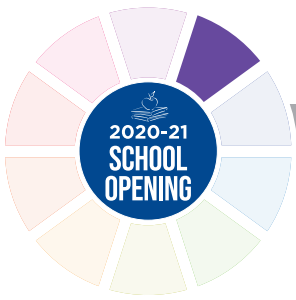
Q: What will social distancing look like on the school campus?

Routes will be designated for entry and exit to lunch, recess and other student transition times as feasible. Students will be asked to maintain social distancing guidelines and health and safety protocol during recess, lunch, restroom and library visits. Group activities will be very limited. Lunch will be offered in a "to go" manner. During regular school hours, school sites will restrict non-essential visitors, volunteers and activities involving groups.

Q: What safety protocols will be in place at the school site?

The following steps are planned and may be adjusted, added to or eliminated depending upon updates to Public Health Orders:

- Staff members will complete mandated COVID-19 online trainings by the Center for Disease Control, including coronavirus awareness, hand washing, sanitation, use of face coverings and managing stress and anxiety of students. They will conduct self-screenings daily and follow public health mandates regarding PPE.
- Campuses will follow guidelines developed by the California Department of Public Health for cleaning, disinfection and ventilation of school campuses.
- Common touch surfaces will be cleaned regularly (e.g. counter tops, door handles, restrooms, student desks, student chairs, etc.).
- Staff and students will be expected to wash/sanitize their hands regularly. Every classroom and workstation will be provided hand sanitizer to use.
- Schools will limit sharing of supplies between students to the extent possible and encourage students to take home personal items for cleaning daily.
- Signage will promote healthy hygiene practices and reminders to stay home when ill. Students will be encouraged to bring refillable water bottles or have an option to use a disposable cup at water fountains.
- Physical barriers will be installed in front office areas where face-to-face interaction with the public occurs.
- During regular school hours, school sites will restrict non-essential visitors, parents, volunteers and activities involving other groups.



Frequently Asked Questions: Instructional Options for Families

Q: Will the District help with technology needs?

Yes. Students/families needing technology support to conduct online learning, such as a device, WiFi or a hotspot, will be assisted.

Q: What if I want my child to learn using the online model for the entire school year?

Clovis Online School, a dependent charter school attached to Clovis Unified School District, provides online distance learning for the full school year for grades 7 to 12. All of the courses have been approved by CUSD and meet the requirements of A-G and NCAA. It utilizes the Edgenuity platform. For enrollment or information about COS, see <https://onlineschool.cusd.com/>.

Q: How do I register my child for my preferred Instructional Model?

Selection between the Traditional Model and Online Model will be made during Clovis Unified's Annual Information Update that occurs July 17 to 24. To update, login to your Parent Connect account - <https://qweb.clovisusd.k12.ca.us/ParentPortal> - and follow the prompts. If you are using a cell phone, first download the Q Parent Connection App available in app stores. Clovis Unified's Technology Department will have a help line available at (559) 327-0789 from 8 a.m. to 5 p.m. Monday through Thursday, starting July 20.

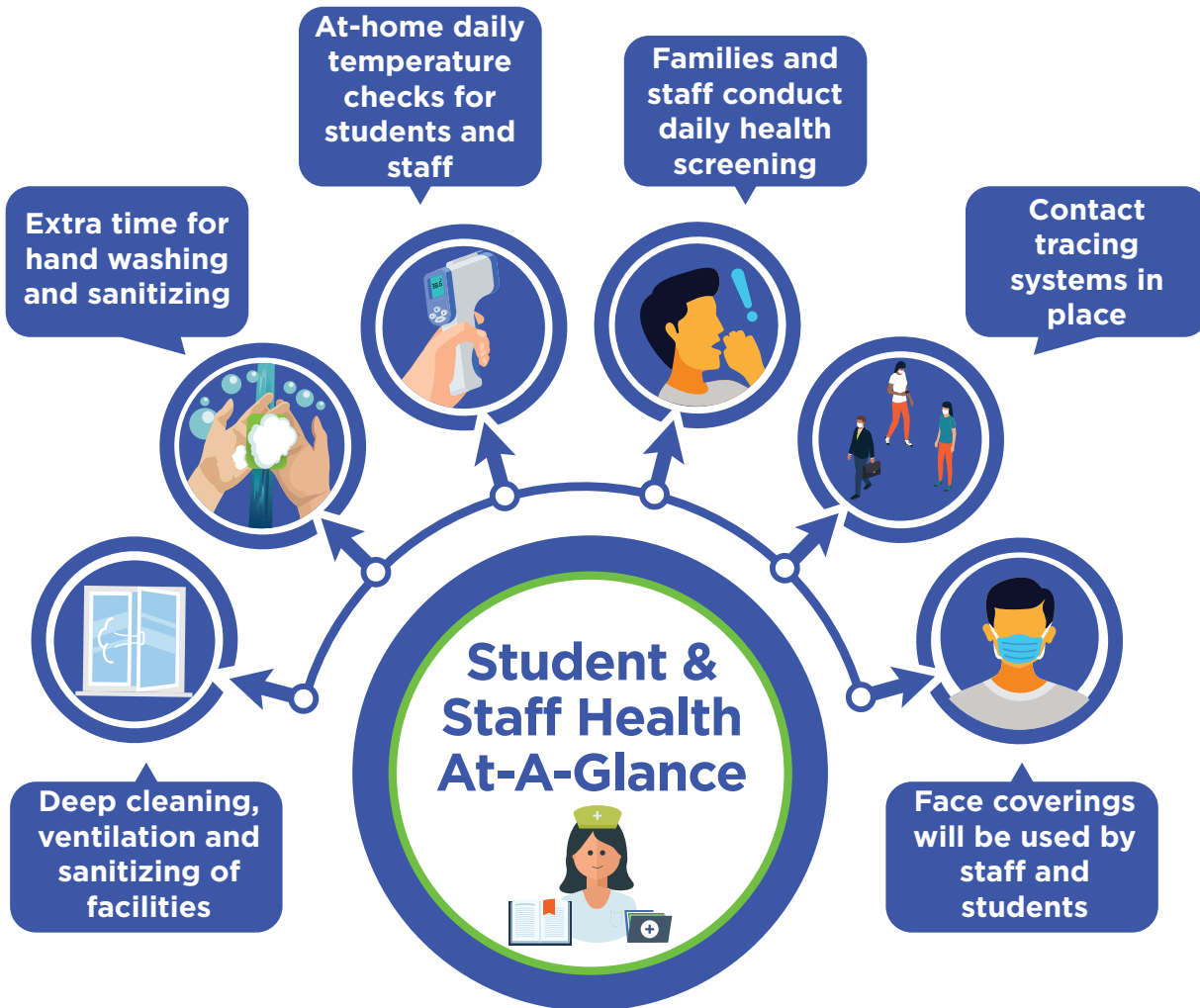
Q: Who can I contact if I have specific questions about Instructional Models before I make my child's selection?

Please email your child's principal, school administration or area superintendent. Email addresses are available on district and school websites.

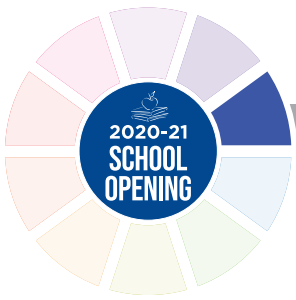


2020-2021 SCHOOL OPENING & SAFETY PLAN

The health and wellness of our students is a top priority as we return to school. Some things will look a bit different when students return to campuses as we layer in extra health, sanitizing and hygiene steps into the school day.







- Families and staff will be asked to conduct a health screening to self-evaluate for COVID symptoms (cough, shortness of breath, etc.).
- Students and staff should do a daily temperature check. Anyone with a fever of 100.4 or higher should not go to school. Absences as a result of illness symptoms will be excused.
- Extra time will be built into the day for hand washing/sanitizing, and regular reminders about proper covering of coughs and sneezes.
- Systems are in place for contact tracing and isolation of symptomatic individuals if someone falls ill while on campus. These systems help in monitoring potential exposure within the school community in the event of a positive case at school.
- Face coverings will be used by staff and encouraged among our student population (we will follow any existing mandates related to face coverings by students).
- Deep cleaning, ventilation and sanitizing of facilities will follow California Department of Public Health and Centers for Disease Control protocols.



COVID-19 & Quarantine Guidelines

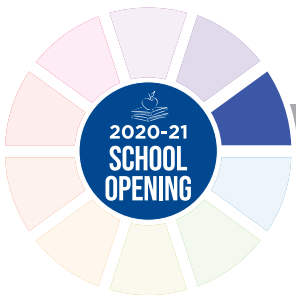
What happens when a student or staff member becomes sick?

PERSON A	 <p>Any person who has tested positive for COVID-19. Confirmed with lab result.</p>	<p>With symptoms:</p> <p>Isolation until the following requirements have been met:</p> <ul style="list-style-type: none"> • 10 days since symptoms first appeared and • 72 hours (3 days) with no fever (without the use of fever-reducing medicine) • Symptoms have improved <p>The 72 hours without fever may possibly occur within the 10 days of isolation, or after the 10 days</p> <p>Without symptoms (Asymptomatic):</p> <p>Quarantine for 10 days from test date:</p> <ul style="list-style-type: none"> • Monitor self for symptoms, take temperature twice a day • Released from quarantine after 10 days have passed as long as no symptoms have been present
PERSON B	 <p>Any person who lives in the same household with Person A</p>	<p>No symptoms:</p> <ul style="list-style-type: none"> • Quarantine immediately • Quarantine while Person A is ill and isolated • Quarantine an additional 14 days after Person A has recovered and been released • Quarantine can last up to 24 days or longer
PERSON C	 <p>Any person with close contact to Person A (>15 min, < 6 feet)</p>	<p>Quarantine for 14 days following date of last exposure:</p> <ul style="list-style-type: none"> • Contact Fresno County Department of Public Health with any questions 559-600-3200 • Monitor self for symptoms, take temperature twice a day • Notify Primary Care Provider if symptoms develop
PERSON D	 <p>Any person who has had exposure to Person B or C</p>	<p>NO QUARANTINE OR ACTION REQUIRED unless:</p> <p>Person B or C develops symptoms OR tests positive and Person D had contact with Person B or C within 14 days then:</p> <ul style="list-style-type: none"> • Contact Primary Care Provider to see about testing • Contact Health Services with questions regarding timing and exposure • Clear on daily self-health screening tool

Developed in collaboration with Fresno County Department of Public Health

DEFINITIONS

- Isolation separates infected people with a contagious disease from people who are not sick.
- Quarantine separates and restricts the movement of people who were exposed to a contagious disease to see if they become sick.
- Close Contact defined as anyone who was within 6 feet of an unmasked infected person for at least 15 minutes, starting from 48 hours before the person began feeling sick until the time the person was isolated.



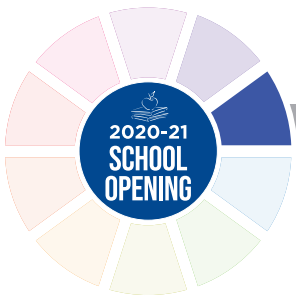
Social Emotional Support

We recognize that our students have been negatively impacted by the COVID pandemic and suspension of on-campus instruction, and a transition back to school wouldn't be complete without expansive social-emotional support. In Clovis Unified, whether selecting an online or traditional option, families will have access to an extensive network of supports including school psychologists and others there to support your child.

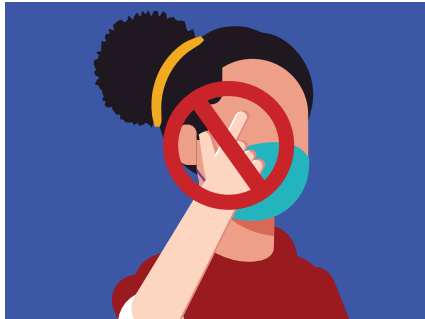
Tier I interventions are available for all students through every school. These include items like School Wellness Teams, Positive Behavior Intervention and Supports (PBIS), and available counselors and psychologists. Tier II and III interventions that offer a heightened level of support for students are also available. (See link to the Multi-Tiered System of Supports below.)

Students enrolled in the online instructional model would continue to have access to Clovis Unified's school psychologists and other social emotional wellness resources. While delivery of these services might look different in an online environment, a student's teacher and/or any other school personnel can connect your child with these resources. Parents can also request support and intervention for their student by contacting their school office at any time.

[A Multi-Tiered System of Supports Promoting Psychological Wellness >>](#)



Prevention Tips



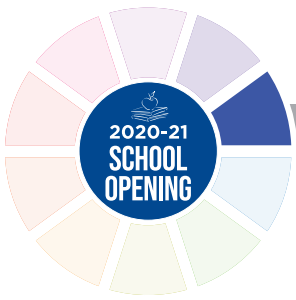
- **Wash hands** often using soap and water or use hand sanitizer.
- **Practice social distancing** when practicable.
- **Wear a mask or face covering** when social distancing is not possible.
- **Avoid touching** your eyes, nose and mouth. Germs spread this way.
- **Do not share** food or drinks.
- **Cover the mouth** with tissue when sneezing or coughing, or cough and sneeze into your elbow. Throw tissues in the trash and wash hands.
- **Frequently clean** commonly used household items and frequently used surfaces.
- **Avoid close contact** with people who are ill.

If your child becomes ill:



- **Please contact your physician**
- **Your child should be kept out of school activities for 10 days after showing symptoms and after they have been fever-free for 72 hours, without the use of fever-reducing medications.**
- **Inform your site administrator, coach, director or advisor that your child is home sick.**

Know the symptoms of COVID. Symptoms may appear 2-14 days after exposure and could include: fever or chills, cough, shortness of breath or difficulty breathing, fatigue, muscle or body aches, headache, new loss of taste or smell, sore throat, congestion or runny nose, nausea or vomiting, or diarrhea.



Wear Your Face Covering Correctly

- Wash your hands before putting anything on your face
- Put it over your nose and mouth, and secure it under your chin
- Try to fit it snugly against the sides of your face
- Make sure you can breathe easily



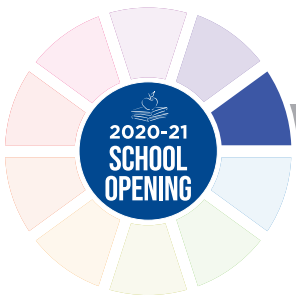
Use the Face Covering to Protect Others

- Wear a face covering to help protect others in case you're infected but don't have symptoms
- Wear the covering in public settings when around people who don't live in your household, especially when physical distancing measures are difficult to maintain.
- Don't put the covering around your neck or up on your forehead
- Don't touch the face covering, and if you do, wash your hands



Take Off Your Cloth Face Covering Carefully, When You're Home

- Untie the strings behind your head or stretch the ear loops
- Handle only by ear loops or ties
- Fold outside corners together
- Place covering in the washing machine
- Be careful not to touch your eyes, nose or mouth when removing, and wash hands immediately after removing



Frequently Asked Questions: Student & Staff Health

Q. What will health and wellness look like during the school day?

- Students and staff members will be wearing face coverings as designated by public health requirements.
- To minimize contact among the public, parents and visitors will have limited access to the school campus.
- Abundant signage will encourage physical distancing, proper hand washing and use of hand sanitizer, and prevention tips.
- Health screenings are expected by families and staff before coming to school.
- Frequent hand washing or sanitizing will be encouraged and allotted for during the school day.

Q. What happens if a student or staff member falls ill while at school?

Any students or staff exhibiting symptoms during the school day will be placed in an adult-supervised isolation room until the student or staff member can go home. Anyone experiencing COVID-related symptoms is advised to contact their healthcare provider immediately.

Q. What training is staff provided to support health and safety protocols?

All employees are required to complete the following training through the Clovis Unified Human Resources Office:

- How to Clean and Disinfect Your Schools
- How to Protect Yourself and Others
- HIPAA Training

Q. What are the PPE guidelines used by CUSD?

- As recommended by the CDC, all staff should wear face coverings. Per California Department of Public Health guidance, teachers could use face shields, which enable students to see their faces and to avoid potential barriers to phonological instruction.
- As of mid-July, an Executive Order of the Governor requires anyone (including students over two years of age) to wear face coverings when in buildings. If the Governor revises his order, face coverings for students in Clovis Unified would be recommended but not required.
- Employees engaging in symptom screening will wear surgical masks, face shields and disposable gloves.
- Specialized service employees such as front office, food service and custodial service staff will wear appropriate PPE for their roles.



On Campus Practices & Protocols

One of our core values is to provide safe, student-centered, world-class schools and facilities – and that won't change. In addition to extensive maintenance and cleaning practices already in place, Clovis Unified is implementing health and safety actions at our campuses that were developed with the guidance of local public health officials and the Centers for Disease Control.



Custodial Procedures

- At least twice daily, disinfect frequently touched hard surfaces (e.g. tables, desks, chairs, door handles, light switches, phones, copy/fax machines, bathroom surfaces, drinking fountains, etc.)
- Daily extensive disinfecting and cleaning of classrooms, offices and workspaces, to take place each evening.



Campus Logistics

Our school sites include many buildings and areas for daily activities. Safety and social distance signage and daily health screening reminders will be posted in all buildings. Additional steps will be taken to encourage social distancing and hygiene practices.



Getting around Campus

- Directional flow designations for entry and exits in all buildings, including classrooms, school offices, libraries, etc.
- Social distancing floor markers
- Student to sign out whenever leaving classroom
- Students to have assigned bathrooms
- School sites to restrict non-essential visitors and volunteers. Necessary visitors will follow a check-in procedure at the front door of the school office.



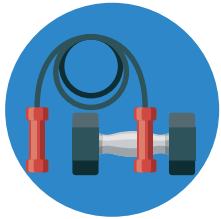
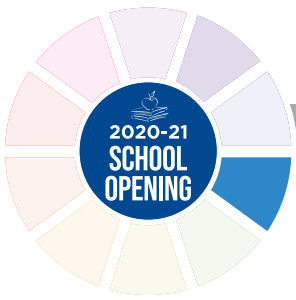
School Office/Staff Procedures

- Limit sharing of devices such as phones and copying machines, with disinfectant available for between uses.
- Utilizing hand sanitizer and personal protective equipment



Outdoor Activities

- All playground equipment closed
- Social distancing required in common areas, such as amphitheaters and quads



Athletic Facilities

Use of gyms and weight rooms will initially be permitted in a limited capacity when allowed by local and state health officials. The following practices for the hygiene of equipment and facilities will be used and were developed with local public health officials, sports and national organizations. These are subject to change.

- Routine cleaning schedules
- Sanitation of hard surface prior to use, including locker rooms, weight equipment, chairs in meeting rooms, etc.
- Hand sanitizer available
- Weight equipment wiped down between athlete usage
- Clothing, shoes worn that minimizes transmission of perspiration on equipment
- Any equipment with exposed openings to be covered
- Athletes encouraged to shower, take home and wash workout clothing daily
- Coach to be provided clean towels and cleaning materials daily for use on equipment, mats, etc.



Community Use of Facilities

- All facilities closed to outside groups at this time.



Frequently Asked Questions: Campus Safety

Q: If a someone on campus tests positive, what additional facilities cleaning steps will be taken?

Access to the areas used by the sick person will be restricted until fully cleaned and disinfected. Cleaning procedures would include fogging the infected space with a disinfectant followed by a deep cleaning with a disinfecting solution of the exposed facility (classroom, office, bathroom, etc.)

Q: When will sports fields and facilities become available for outside organizations to use?

Clovis Unified is following the direction of the Fresno County Department of Public Health's guidance.

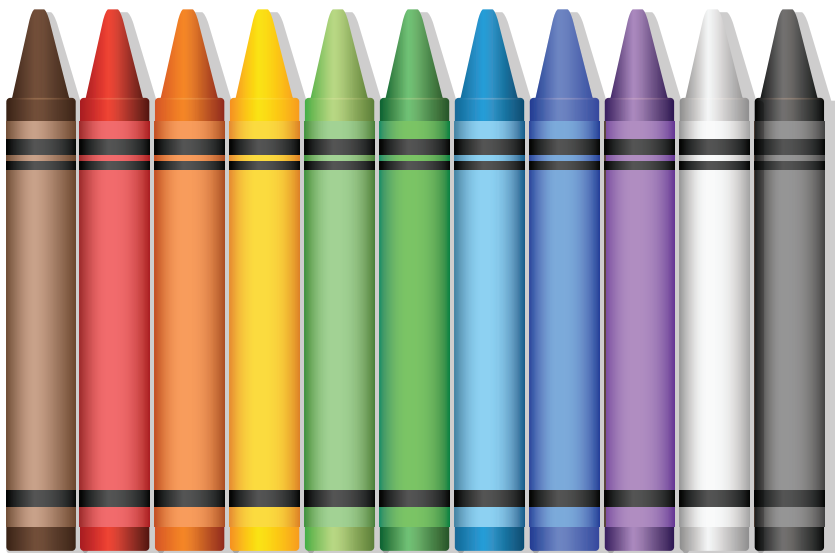


Preschool

Preschool will be conducted with reduced class sizes at each school site. The number enrolled will be dependent on the type of facility at the site. Classroom protocols will include: daily health checks, enhanced cleaning, staggered drop off and pick up times, individualized student supplies and increased handwashing.

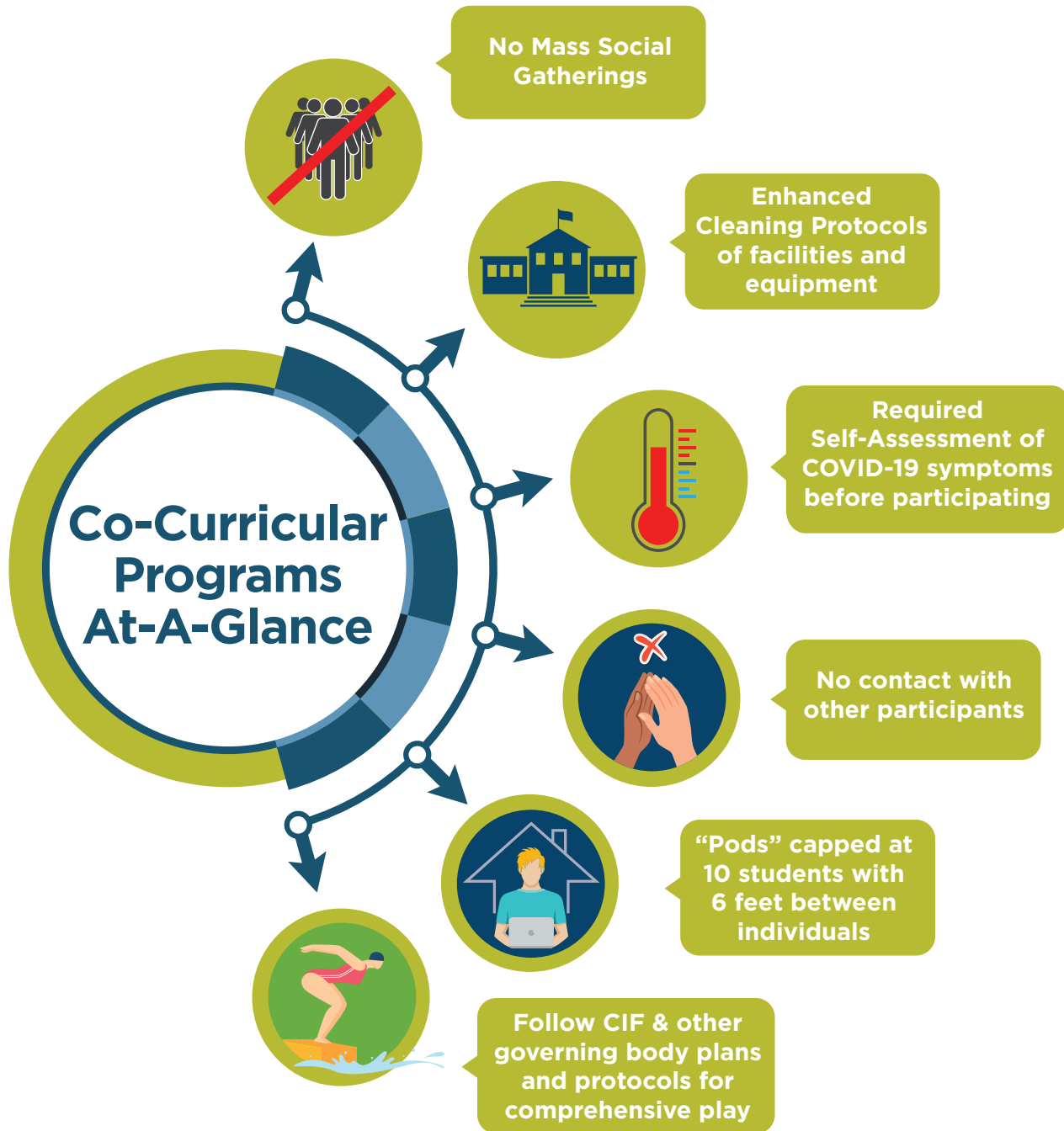
Before & After School Programs (ASES & Campus Club)

Before and after school programs will be offered for students enrolled in the traditional instructional model and will follow the same safety procedures as the regular school day. The number enrolled will be dependent on available space and classrooms at school sites. Classroom protocols will include: daily health checks at before school programs, enhanced cleaning, individualized student supplies and increased handwashing. More information regarding registration for Campus Club will be announced in the coming weeks at www.cusd.com.





Co-Curricular Activities Are Vital to our Kids' Development



In Clovis Unified School District, Co-Curricular activities remain an important component of student's education. Modifications to how students participate in activities like sports, visual and performing arts, and career technological education, enable students to continue these pursuits. At this time, in accordance to county regulations, athletic

contests/games are not allowed in Clovis Unified School District. CIF will make a determination of the status of athletics in the state July 20 for the 2020-21 school year. This decision, along with guidance with the Fresno County Department of Public Health, will help in determining how CUSD will operate co-curricular across the district.



Sports

Participants and coaches are required to complete a self-assessment for the signs/symptoms of COVID-19. Prior to reporting to the activity each day. Coaches will maintain documentation of screenings. Those with positive symptoms should not be allowed to participate and should contact his or her primary care provider or other appropriate health care professional. Every participant must complete a participation form that identifies the risks of participating in the restricted activities.

Athletes should report to workouts in proper attire and return home to shower at the end of their workout. Staggered arrivals and departures will be required to enable proper social distancing.

Students will be grouped in pods no larger than 10 participants. These pods will not interact with other pods. There must be a minimum distance of 6 feet between each individual at all times. If this is not possible indoors, then the maximum number of individuals in the room must be decreased until proper social distancing can occur. There can be no contact between participants. All equipment should be cleaned after each use and prior to next workouts.

At this time, no spectators are allowed at facilities.

Pools

Pools will have a limit of 2 swimmers per lane with no more than 10 swimmers out on deck at one time. This goes for the grass area inside some pool complexes. Only 10 people may be outside of the pool inside the pool complex.

Visual and Performing Arts (VAPA)

We value visual and performing arts in Clovis Unified, and every effort will be made to provide a meaningful experience for students. Plans are being developed for classes, such as drama, music, visual arts, and dance, to occur in some format that follows the necessary health and safety protocols. Plans for performances of these disciplines are being researched, and an update will be coming when available.

Clubs and Activities

All in-person co-curricular activities, assemblies, rallies, field trips, and any school-wide gatherings related to the 2020-21 school year will be suspended until the County Health Officer deems them safe. Virtual assemblies, rallies, field trips and other similar activities may take place.

Mass Social gatherings of any kind are not permitted.

Trips and Competitions

Field Trips and Competitions will follow local guidance from the Fresno County Department of Public Health.



Additional Programs & Schools:



THE CENTER FOR
ADVANCED
RESEARCH AND
TECHNOLOGY

Center for Advanced Research and Technology (CART)

An update regarding Center for Advanced Research and Technology (CART) will be coming soon based on the collaboration between Clovis Unified, Fresno Unified, and the Fresno County Department of Public Health.



Clovis Adult School

Clovis Adult School will operate under normal schedule with limited class sizes following the recommendations of the Fresno County Department of Public Health and Clovis Unified School District. Classes will be held following social distancing guidelines and staff wearing masks. Clovis Adult will mirror the guidelines established for CUSD K-12 schools.



Career Technical Education (CTE)

Our goal with Career Technical Education (CTE) is to deliver an enriched educational experience that promotes student interest and academic success, while also developing technical and soft skills training necessary to prepare our students for college and career. In addition to academic learning, students benefit from the practical, hands-on learning experiences they gain from their work based learning opportunities. These experiences range from internships, job shadowing, on-the-job training, and industry-certification opportunities.

For the 2020-21 school year, we are committed to students continuing to gain these experiences but understand things may look different from our industry partners providing virtual work experiences, students participating in web conferences to learn about career opportunities or taking online courses to receive industry certification. Our hope would also be to have smaller groups of students be able to participate in work setting on campus to utilize industry equipment our schools have purchased or participate in work settings in smaller numbers.

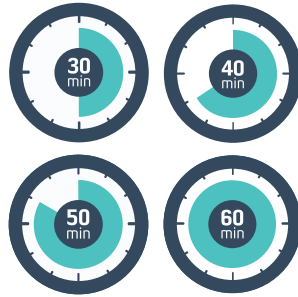


Sierra Outdoor School

Sierra Outdoor School has developed their guidelines in accordance with Tuolumne County Regulations and Clovis Unified School District. Updates can be found by sos.cusd.com.



Meals bagged for pick-up



Increased number of lunch periods and/or staggered lunch times



Designated outdoor lunch areas with social distancing

Meal Delivery & Location

Bagged meals aligned with the National School Breakfast and Lunch Program will be available to students. Staggered lunch times (elementary) and/or an increased number of lunch periods (secondary) will be scheduled. Students will eat in designated lunch areas outside, or in case of inclement weather, in assigned classrooms or in the cafeteria. Social distancing will be maintained in all meal environments to the extent possible.

Cafeteria Practices

Cafeteria cleaning procedures will follow the enhanced cleaning protocols outlined in the **Campus Safety** section. In addition, if/when students eat in the cafeteria, surfaces will be cleaned in between each lunch period. Hand sanitizer will be available to students before and after lunch, and time will be built into the school day for hand washing and sanitizing. Campus Catering staff will wear required Personal Protective Equipment (PPE) and will maintain social distancing during food preparation and distribution.

No-Cost Meals

Qualifying students will continue to receive free breakfast and lunch. Applications can be accessed and submitted at <https://www.cusd.com/NoCostMeals.aspx>. Procedures will be developed to ensure qualifying students receive meals both on-campus and off, including:

- For students enrolled in the Online Instructional Model, procedures will be developed to provide access to meals.
- For students absent due to illness or required to self-isolate, a parent or an adult designated by the parent may pick up meals for the student.



Frequently Asked Questions: School Meals

Q. Can students still bring their own meals to school?

Yes, students still have the option of bringing their own meals to school.

Q. What is the meal purchase & pickup process for Online students?

For students that do not qualify for No-Cost Meals, funds can be loaded to meal accounts through Parent Connect as usual. A student ID or print-out from Parent Connect will be required for meal pickup. Locations and times for meal pickups are being finalized and will be shared with families and on our website at cusd.com when available.



Safety is Our Top Priority

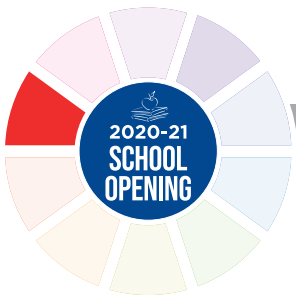
During the past several weeks, discussions related to how students can be socially distanced on school buses have taken place across the country. School districts are not required to provide transportation services to all students, however we know that transportation to and from school is in the best interest of our students. Therefore, while some districts have had to completely opt out of providing transportation, Clovis Unified's Transportation team continues to be committed to providing quality transportation to and from school.

After thoroughly examining all options, it has been determined that substantially distancing students on our school buses is not possible. Therefore, each family residing beyond their school's established walking radius zone must choose whether they will utilize CUSD Transportation services. Parents who have chosen in-person instruction for their children and choose not to utilize CUSD Transportation will need to make their own transportation arrangements. For those who do plan to utilize CUSD busing to and from school, we have established the following safety measures in order to reduce risk for bus drivers and riders:

- Students are responsible for providing and wearing their own face coverings at all times while on board the bus
- Students are required to sanitize their hands upon boarding the bus
- Students will fill the vehicle from back to front or as stops are assigned by the driver
- Social distancing will be utilized to the greatest extent possible while on the bus
- Windows on buses will be open for as long as possible into late fall/early winter to maximize air flow
- Disinfecting and cleaning will occur after each run
- Drivers will wear face coverings when loading and unloading students
- Should a student become ill while in transit, they will be isolated in a dedicated seat

Registration is Required

Families are encouraged to make their own transportation arrangements, if possible, to help limit the number of students who ride CUSD buses. For those families that do not have the ability to provide their own transportation, registration for CUSD Transportation services is required. Determination of qualification and registration must be completed by Friday, July 24 by accessing the website at www.cusd.com/transportation.aspx. Bus passes will be available for pick-up at the CUSD Transportation Office, 1450 Herndon Ave., beginning Wednesday, Aug. 12 from 7 a.m. to 4 p.m. All students must have a bus pass to board the bus the first day of school.



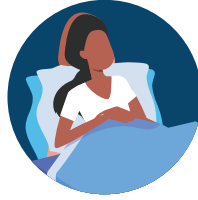
Personnel Procedures

Clovis Unified is dedicated to keeping our 6,000+ employees safe and properly equipped as we open schools for in-person and at-home instruction this fall. A wide-range of protocols for the district, employees and visitors are in place.

To help prevent the spread of COVID-19, CUSD employees are expected to:



Self-monitoring health screening upon entry to all facilities



Stay home utilizing leave entitlements if ill



Utilize online tools for meetings and events



Minimize close contact with others (e.g., physical greetings, handshakes, hugs)



Wear face covering in accordance with local and state directives



Practice proper hand hygiene, including washing hands often with soap and water for at least 20 seconds, or using an alcohol-based (60% or higher) hand sanitizer frequently to remove pathogens



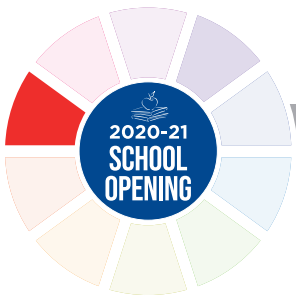
Avoid group gatherings and practice social distancing



Regularly clean and disinfect workstation and surfaces

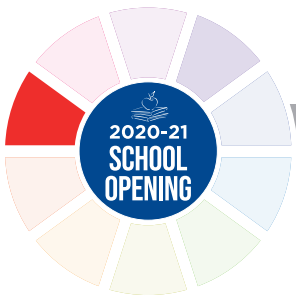


Maintain a clutter-free workstation to promote efficient and regular cleaning and disinfecting



To support employees in preventing the spread of COVID-19, CUSD will take the following measures:

- Communicate health and safety protocols with signage throughout CUSD buildings and worksites
- Provide PPE and cleaning/sanitizing supplies for CUSD employees
- Ensure routine cleaning of frequently touched surfaces, and nightly disinfecting of offices and classrooms
- Limit the size of gatherings to ensure alignment with local and state guidelines
- When possible, allow for staggering of assigned breaks and employee lunch times to avoid congregation of employees
- Implement measures encouraging physical distancing of a minimum of six feet between individuals; when physical distancing cannot be maintained, implement procedures to protect employees
- Utilize online meeting tools for virtual meetings or events. If in-person meetings are held, ensure social distancing of at least six feet between people and limit group size in accordance with local and state guidelines.
- Provide Families First Coronavirus Response Act (FFCRA) leave. FFCRA Leave Request form: <https://bit.ly/3fDML0n>
- Provide physical barriers in front office areas where face-to-face interaction with the public occurs
- Limit the presence of adults not employed by the district on campuses
- Provide required COVID-19 online trainings by the Center for Disease Control, including coronavirus awareness, hand washing, sanitation, use of face coverings and managing stress and anxiety of students



Employee and Visitor Health Screening Protocol

All CUSD employees and visitors who report to a CUSD site must self-certify their health by answering these questions before arriving:



Are you experiencing fever, body aches or chills?



Are you experiencing any respiratory symptoms (e.g., shortness of breath, or persistent cough, or runny nose)?

Employee Steps:

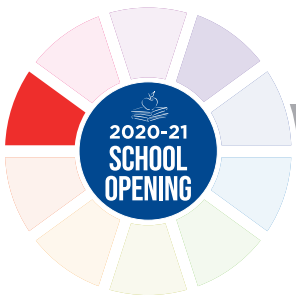
Employees answering “Yes” to question 1 must inform their supervisors and go home. Click here to view the [exposure flow chart](#).

Employees answering “Yes” to question 2: If symptoms are secondary to underlying disease (such as allergies or asthma) and not worsened as compared to baseline, then the employee may report to work. If symptoms in question 2 are new, the employee must inform their supervisor and go home. Click here to view the [exposure flow chart](#).

Visitor Steps:

Visitors answering “No” to all questions may proceed onto CUSD sites.

Visitors answering “Yes” to either question must not enter CUSD sites and should go home.



Visitor and Substitute Protocol for Arrival at a CUSD Site

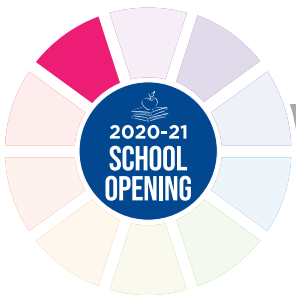
To minimize the amount of exposure among staff and students, the following procedures are in place for arrival of visitors and substitutes to CUSD sites:

- To ensure safety protocols and self-certification of health, all visitors must enter the main building entrance when visiting a CUSD site.
- Visitors are highly encouraged to schedule appointments in advance of arrival; walk-in visitors will be seen based on availability and at the discretion of the department.
- All visitors and substitutes will be expected to self-certify their health status before entering a CUSD building or school site by answering the health questions listed on posted signs at main entrances.
- The front reception will contact the staff member prior to allowing visitors to enter a work area.
- Staff must make every effort to answer calls from the main front reception desk.

Disinfecting Protocol

The CUSD Custodial Department will provide regular disinfecting and cleaning of common areas and equipment, including high-touch surfaces such as door handles, counters, light switches and breakrooms at all CUSD sites and facilities. Deep disinfecting will occur in all classrooms and work areas during routine nighttime service.

Cleaning supplies will be available in high-traffic areas of office settings for staff use. Disinfectants should not be applied on items that children might put in their mouths. Cleaning toys and other items used by children should be done with soap and water or an appropriate sanitizing solution.



Special Education

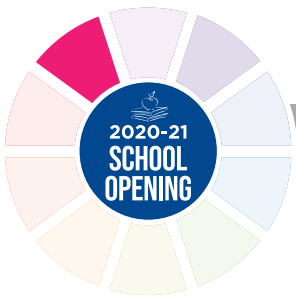
Safety considerations and protocols have been established with the guidance of public health officials and medical experts to accommodate our special education students' return to campus for both students and employees.

Health & Safety Precautions

- School personnel will work closely with families of students who are immunocompromised regarding specific needs when returning to school.
 - Some students will require an updated doctor's note stating it is safe for students to return to school.
 - Nurse will coordinate contact and any updates
- Staff will be provided with face coverings which are most conducive to addressing specific student needs.
- Staff will be provided with gloves as appropriate.
- Staff requiring closer proximity for medical procedures will be provided additional PPE.
- Services will be delivered with adherence to the wearing of facial coverings, social distancing as practicable, increased hand washing and sanitizing.
- Daily health screenings and temperature checks will be conducted by staff for programs with medically fragile students.
- Plexiglass shields will be utilized during student assessments.

Options for Learning

- The traditional model will be available in a manner that meets current social distancing guidelines.
- Instruction for students will be developed and implemented consistent with applicable laws.



Frequently Asked Questions: Students with Special Needs

Q: Is the COVID-19 instructional model for general education the same for special education programs?

Special education programs will follow the regular traditional model. Families should contact the Special Education Department with any request for alternate methods of instruction. Instruction for students will be developed and implemented consistent with applicable laws.

Q: How will the number of support staff in a classroom affect capacity?

The number of support staff will be considered in capacity of a classroom. The program administrator or director will monitor program numbers.

Q: What if I have more questions about my child's situation?

Please contact the Special Education Department at 559.327.9400 for specific questions.