

NLAT 2020

Candidate Guide for Online Assessment

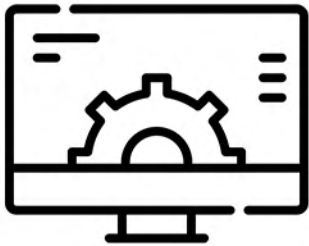


INSTRUCTIONS FOR REMOTELY PROCTORED ONLINE EXAM

Due to Covid19 pandemic, you can take your NLAT 2020 exam in a comfortable setting of your home while being monitored by our proctor. You can appear for the NLAT 2020 in a remote-proctored home-based manner. Please read the following requirements, steps and instructions carefully to attempt the NLAT 2020.

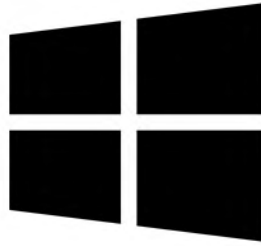
1. Computer, Browser and Mobile connectivity Requirements

The remote proctoring module needs the following system configuration and requirements.



System Configuration

Processor : Core 2 Duo & above
Processor Speed : 1.5 GHz & above
RAM : Minimum 1 GB



Operating System (Windows/Mac/Linux)

Minimum: Windows 7/ Mac OS 10.13
Linux (ubuntu versions 18.04,
16.04, 15.04 only)



Android Smartphone/Tablet

Google Chrome is up to date
Version 6 and above (64 bit)

- Minimum Internet Bandwidth : 512 Kbps
- Pop-up blockers on the web browser must be disabled.
- Java Script must be enabled.

The remote proctoring software streams exam data, including audio and video, directly to the cloud as you take the exam. In order to allow the continuous transfer of exam data, you need to maintain a minimum connection speed of **512 kbps**. We recommend you to verify your connection speed using an internet speed test before starting an exam.

2. Steps to start online exam

Enter your NLAT login credentials

Application No: 123456

Password : XXXX-123456

- a) Enter your Details
- b) Click on Start Assessment

National Law School of India University | National Law Aptitude Test UG 2020

Login

Application No.

Password

Start Assessment

Click on Start Assessment

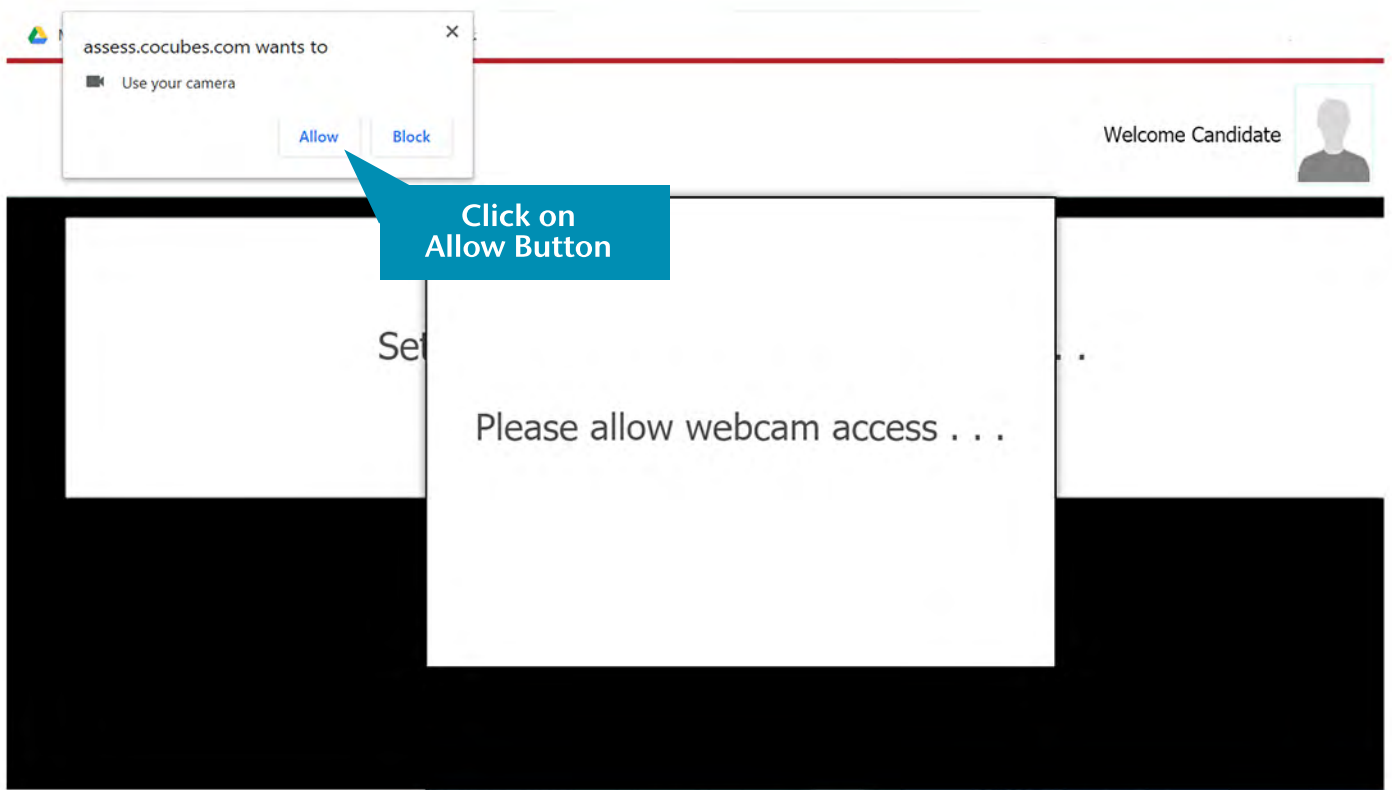
- c) A pop up will open asking for your consent for the use of the webcam and microphone. Please consent by clicking the 'Accept' button.

The screenshot shows a web interface with a 'Welcome Candidate' header and a user profile icon. A central pop-up window titled 'Webcam and Audio Proctored Assessment' is displayed. The pop-up contains icons for a webcam and a microphone, followed by the text: 'I hereby give my consent to the organization to capture the images and sound as part of the assessment process and use the same for processing and analytics. In giving this consent, I understand and declare that:'. Below this, there are five bullet points: 'I am giving this consent in my own free will, and not under duress or in any form of threat', 'The images and sound containing the subject in this consent shall be held by the organization in accordance and compliance with the GDPR guidelines (the General Data Protection Regulation)', 'My information herein, as well as the images and sound to be shared to the recipient shall not be disclosed to any other party without my consent', 'I hereby allow the use of images and sound shall belong to the organization for their own disposition', and 'I hereby agree to waive my rights to any claims to whatever the organization may use of the image and sound'. At the bottom of the pop-up are two buttons: 'Accept' (green) and 'Do not Accept' (blue). A blue callout box with a white arrow points to the 'Accept' button, containing the text 'Click on Accept Button'. To the left of the pop-up, there is a sidebar with an 'Important' section containing a list of instructions, a 'Start Now' button, and a 'You are good to go.' section with system specifications. To the right, there is a 'Quick Links' section with a list of browser versions.

- d) Testing platform will check your system specifications. Read the instructions carefully and click on "Start Now" button to proceed

The screenshot shows a web interface with a 'Welcome Candidate' header and a user profile icon. The main content area is titled 'Important Instructions & Guidelines' and contains a list of instructions: 'The test has total 15 questions for which the total time allowed is 15 minutes', 'Please switch off your mobile and place on your desk', 'Any candidate found copying would be asked to leave', 'In case you are getting any pop-up/virus on your system please inform the invigilator immediately', 'If you lose Internet connectivity at any point in test, do not panic. Continue attempting the assessment. You will not lose time and your answers will be automatically submitted once the Internet comes back', 'If your system shuts down abruptly, don't panic. Your results would have been saved automatically. Don't login again, first contact the invigilator. Necessary steps shall be taken to resume your test', and 'Do not close the test window unless you complete and submit the test'. Below the instructions is a 'Start Now' button. A blue callout box with a white arrow points to the 'Start Now' button, containing the text 'Click Here to Start Assessment'. To the left of the 'Start Now' button, there is a 'You are good to go.' section with system specifications: 'Operating System : Windows 10', 'Browser Version : Chrome 83.0', and 'JavaScript : Enabled'. To the right, there is a 'Quick Links' section with a list of browser versions: 'Internet Explorer 9+', 'Firefox 30+', 'Google Chrome 32+', 'Opera 20+', and 'Adobe Flash Player 11+'.

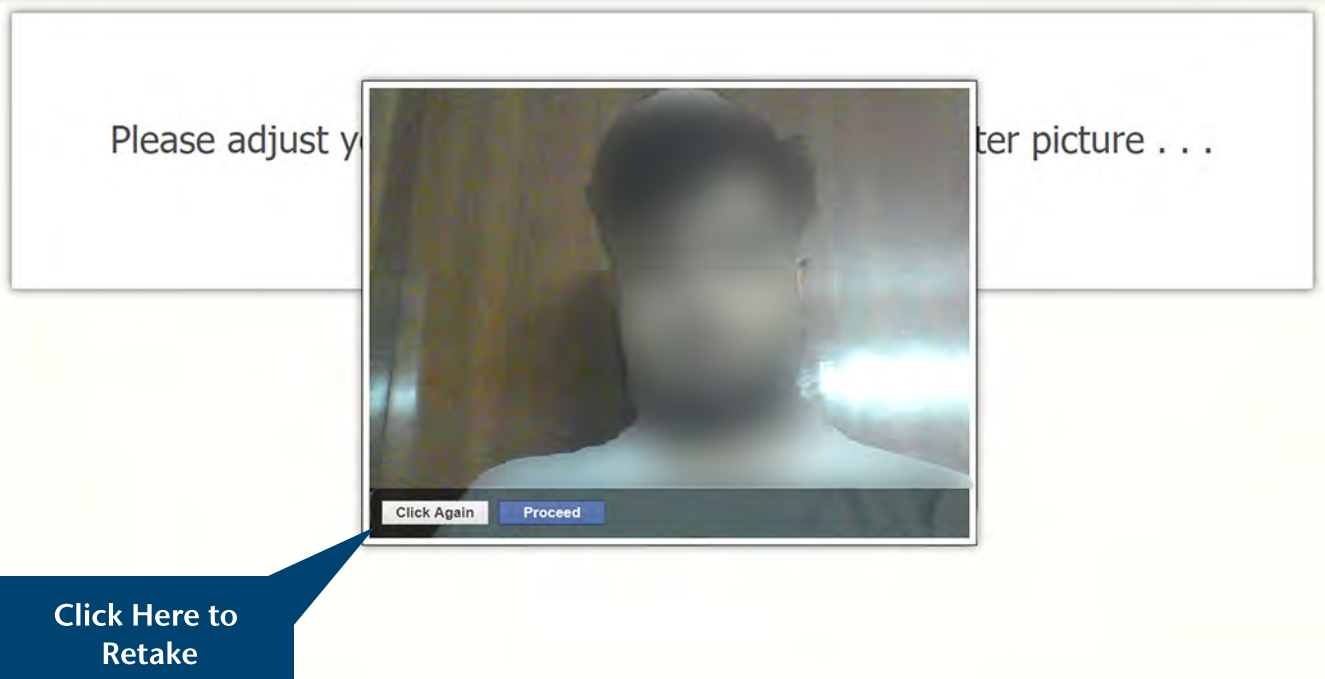
- e) Allow access to webcam or microphone if requested to do so in a pop up.



- f) Sit in front of your Web-Cam. Your photo will be auto captured after 5 seconds timer. In case photo is not captured properly, you can re-click photo by clicking the button "Click Again" as shown below. This step is very important as your photo will be used for verification purpose at the time of admission.

NLAT 2020

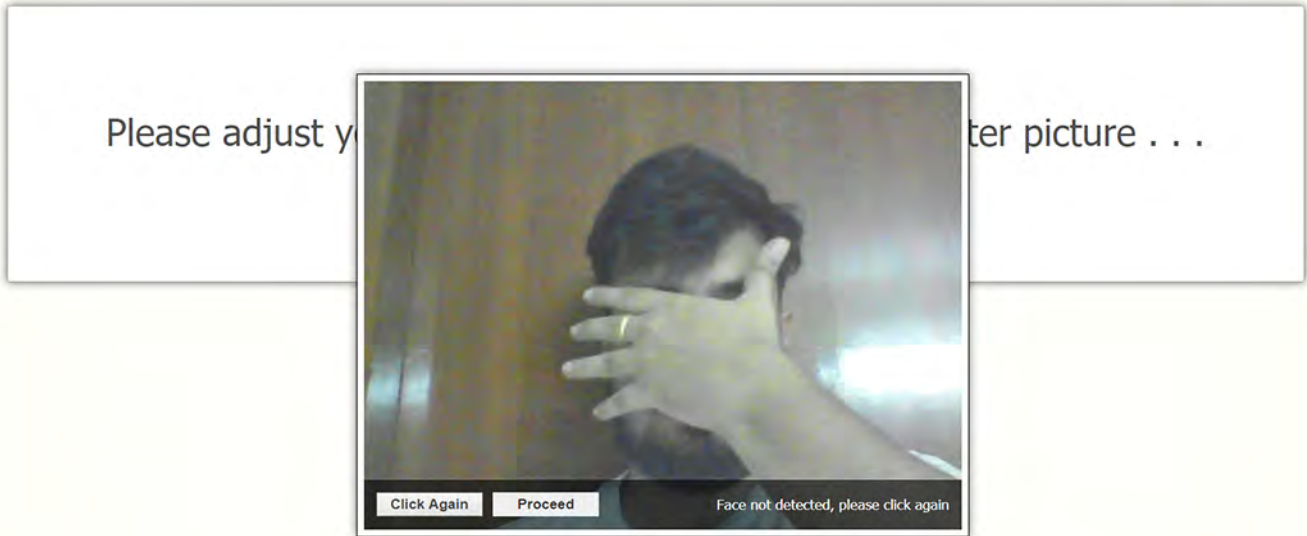
Welcome Candidate



- g) If your face is not clear in the clicked image, it will give an error “Face not detected” and you have to click again.

NLAT 2020

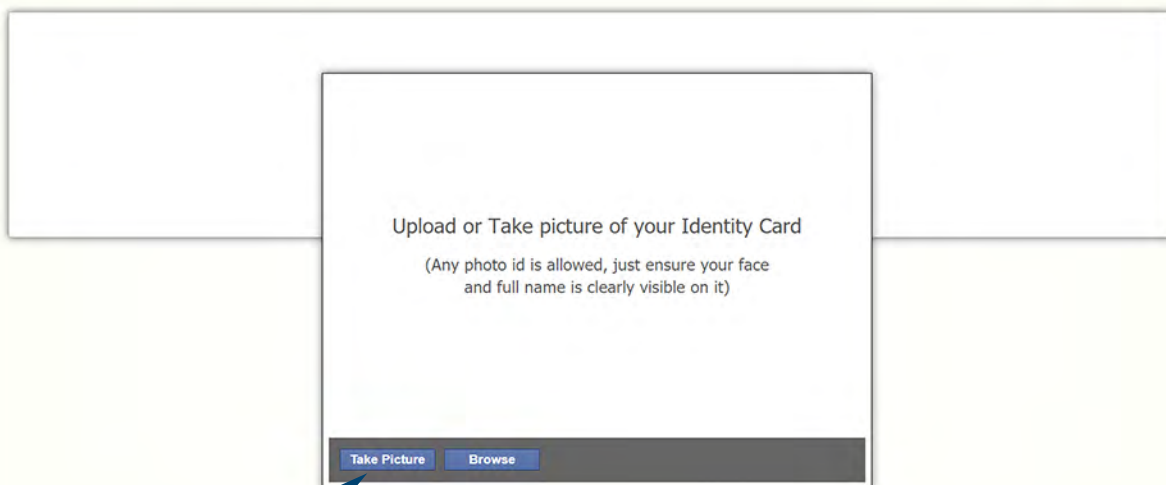
Welcome Candidate



- h) Once your photo is captured properly, click on “Proceed” button.
- i) You can upload or take a picture(.jpeg or .png) of your Government issued Id Proof.
- j) It is recommended to save a clear picture of your photo ID on your system before the examination day for uploading. In case the picture of ID is not clear, you may not be allowed to enter the examination

NLAT 2020

Welcome Candidate



Click Here



Waiting for verification . . .



Verification Successful!

Proceed

You will be automatically redirected in 52 seconds.

j) Your exam will start in full screen mode



To continue assessment, Fullscreen mode is mandatory

Enable Fullscreen

Click here

k) Do read instructions carefully

NLAT 2020

Welcome Candidate

14 : 23
min sec

i Important Instructions & Guidelines (collapse)

Click here

- Welcome to the National Law Aptitude Mock Test (UG) 2020.
- Please read the following instructions carefully before commencing the test.
- The UG Mock Test comprises **1 (one)** General Comprehension ("GC") passage.
- The GC passage is accompanied by **10 (ten)** questions that you must answer based on the information provided in the corresponding GC passage and in the questions.
- The UG Mock Test has a total of **10 (ten)** questions.
- All questions are Multiple Choice Questions ("MCQ") .
- The total duration of the Mock Test is **15 (fifteen) minutes**. The actual NLAT UG 2020 shall be of **45 minutes** duration. PWD candidates shall be provided additional/compensatory in the actual NLAT 2020 as communicated earlier.
- Please note the marking scheme for the UG Mock Test carefully: a. Candidates shall be awarded **2 (two)** marks for each correct answer. b. Candidates shall be awarded **-0.25 (minus point two-five)** marks for each unanswered question. c. Candidates shall be awarded **-0.50 (minus point five)** marks for each question that is wrongly answered.
- This is not an open book examination; candidates may not seek assistance from any other person to answer the questions in the examination. The only exception to this rule is in relation to those candidates who have registered their requirement for a scribe and have received permission for the same from NLSIU.
- Candidates will only have **1 (one)** attempt at each question. Candidates will not be able to revisit a question once they have moved on to another question. Candidates will only be able to move on to the next question once they have answered a question, or indicated that they do wish to leave that question unanswered. Candidates cannot choose the sequence of the questions. They are required to answer in the sequence in which the questions are asked.

l) There will be a time clock on right hand top of your screen, As long as you are able to work with your assessment, clock will move. In case due to any technical reason you are unable to work on your assessment, clock will stop and the time will be adjusted accordingly.

m) Only one question at a time will be displayed. Once you see the question, you have to exercise one of the option, without which you will not be able to move forward. If you do not want to attempt the question, you can click the last option, which is "Leave this question unanswered"

NLAT 2020

Welcome Candidate

13 : 18
min sec

accepting its exports, so depriving it of foreign exchange earnings. This would "amount to a complete economic blockade." The second component of the reserves came from foreign aid. Dhar envisaged two scenarios in which the donor countries might seek to coerce India. They might, as with Pakistan, continue committed aid but suspend fresh commitments. Or they might cut all aid, both committed and prospective. In the first situation, India was "not vulnerable on account of foreign exchange" until March 1972. In the second, the amount of aid withheld would almost equal the amount owed by India to its donors in the current fiscal year by way of debt repayment and repatriation of profits. In this situation, India could reasonably threaten to impose a moratorium on debt. "Thus while as an aid-recipient country we are vulnerable to the adverse reactions of the aid-givers," wrote Dhar, "the size of our debts makes our creditors vulnerable to our reactions. Keynes once said that if I owe you 100 pounds, I should worry but if I owe you a million pounds, you should worry. We owe many millions to our creditors!"

[Extracted, with edits and revisions, from 1971: *A Global History of the Creation of Bangladesh*, by Srinath Raghavan, Harvard University Press, 2013.]

Q 1 Assuming that an equal number of refugees came to India each day in the period August 1, 1971 to 15 December 1971, what would be the per day cost (at the rate of 3 rupees per person per day) of maintaining all the refugees that the government would have to incur as of the end of day on November 13, 1971 in USD terms? (Assume the exchange rate for Indian Rupees and US dollars was constant in the period mentioned).

- Ops:
- A. US \$.91million
 - B. US \$ 1.2 million
 - C. US \$.82 million
 - D. US \$.76 million
 - E. Leave this question unanswered.

Next

Question 1 out of 10

n) You will not be able to go back to questions once you have moved forward.

came from foreign aid. Dhar envisaged two scenarios in which the donor countries might seek to coerce India. They might, as with Pakistan, continue committed aid but suspend fresh commitments. Or they might cut all aid, both committed and prospective. In the first situation, India was "not vulnerable on account of foreign exchange" until March 1972. In the second, the amount of aid withheld would almost equal the amount owed by India to its donors in the current fiscal year by way of debt repayment and repatriation of profits. In this situation, India could reasonably threaten to impose a moratorium on debt. "Thus while as an aid-recipient country we are vulnerable to the adverse reactions of the aid-givers," wrote Dhar, "the size of our debts makes our creditors vulnerable to our reactions. Keynes once said that if I owe you 100 pounds, I should worry but if I owe you a million pounds, you should worry. We owe many millions to our creditors!"

[Extracted, with edits and revisions, from 1971: *A Global History of the Creation of Bangladesh*, by Srinath Raghavan, Harvard University Press, 2013.]

Q 1 Assuming that an equal number of refugees came to India each day in the period August 1, 1971 to 15 December 1971, what would be the per day cost (at the rate of 3 rupees per person per day) of maintaining all the refugees that the government would have to incur as of the end of day on November 13, 1971 in USD terms? (Assume the exchange rate for Indian Rupees and US dollars was constant in the period mentioned).

- Ops:
- A. US \$.91million
 - B. US \$ 1.2 million
 - C. US \$.82 million
 - D. US \$.76 million
 - E. Leave this question unanswered.

 You must select one option

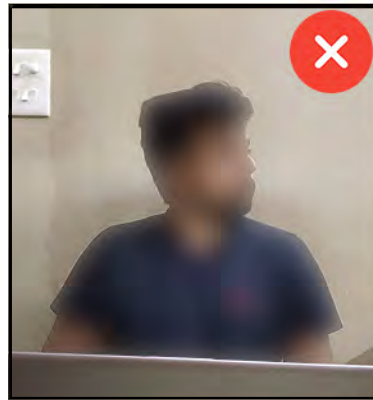
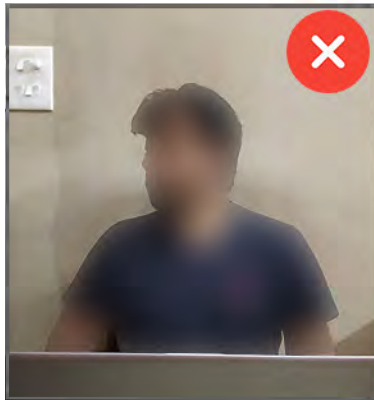
Next

Question 1 out of 10

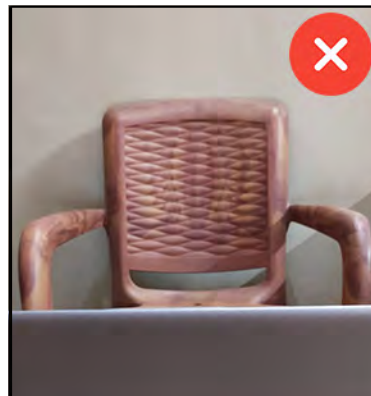
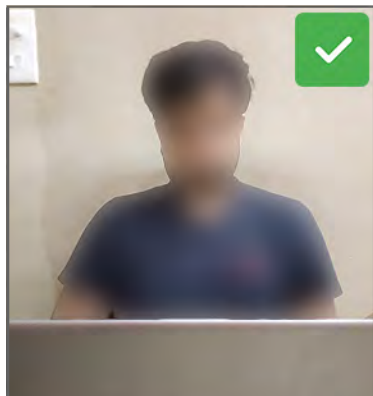
NLAT 2020 Remote Proctoring Online Exam Rules

Applicants appearing for NLAT online exam must adhere to the following instructions.

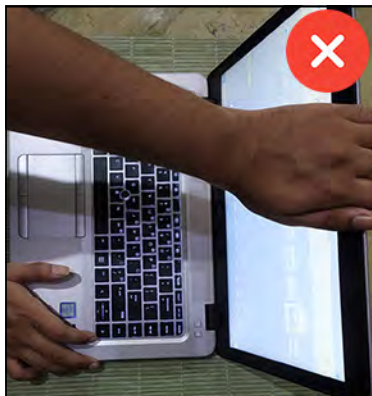
Do not look sideways during the exam. Non-adherence of the same will lead to cancellation of the exam after multiple warnings.



For the entire duration of the exam, please remain seated in front of your webcam. In case you are found leaving your seat during the exam, your exam may be cancelled.

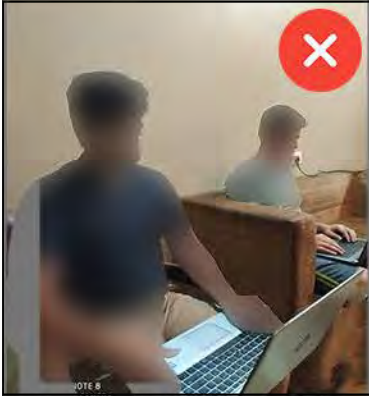


Do not try to cover your camera or unplug the external camera from the system.

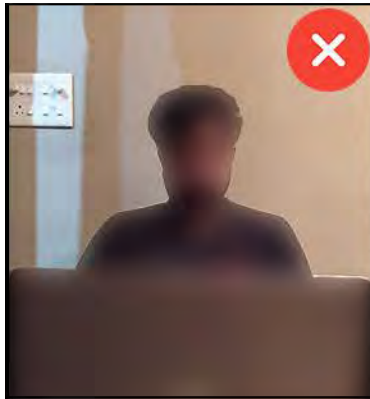
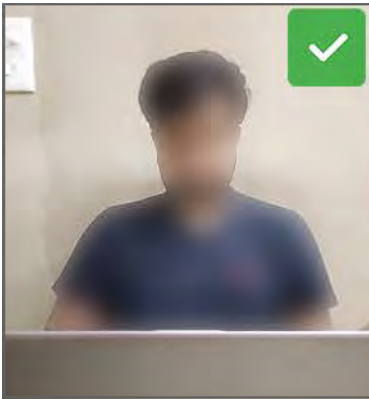


Do not try to navigate away from the exam screen. Doing so will automatically terminate your exam.

No other person is allowed to enter the room while you are taking the proctored exam.

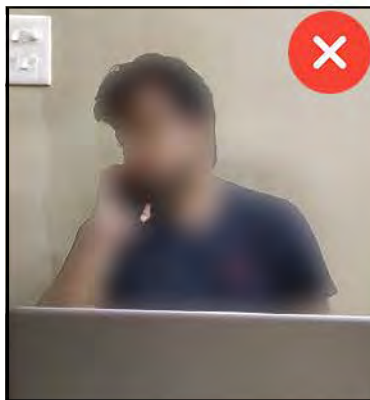
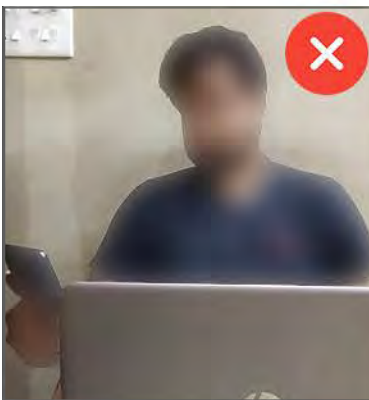


The lighting in the room must be bright enough to be considered “daylight” quality. Overhead lighting is preferred. If overhead lighting is not available, the source of light must not be behind you.



The room must be as quiet as possible. Sounds such as music or television are not permitted.

The following items must not be on your desk or used during your proctored exam such as books, electronic gadgets, notebooks, eatables etc.





- Charge the laptop/mobile well in advance to last for at least 2 hours.
- Student to be seated using a wall as the background.
- Ensure proper lighting in the room so that the pictures captured during the exam are not blurred.
- Photograph clicked must be of good quality.
- Check the power plugs.
- You should ensure adequate internet connectivity is available on your laptop/ desktop.
- You must make sure webcam and mic of your system is working properly.
- You will be under constant observation during the entire duration of the test via artificial intelligence tools and live monitoring by the proctors.
- Any suspected activity will lead to the immediate termination of the exam. The room must be as quiet as possible.
- You should have your water bottle at your table before start of exam as you are not allowed to leave the test screen during exam.
- Do not try to navigate from the main screen. Doing so will automatically terminate your exam.
- You are not allowed to talk to anyone or communicate with anyone in any other format while your exam is being conducted, as Real Time Monitoring is being done by the Proctor in the university.
- You are not allowed to use any other electronic gadgets or any other material on the day of exam. If found then it will be considered for the cancellation of your exam by the Proctor.
- Do not move in front of camera. Do not try to cover your camera or unplug the external camera from the system.
- You are not allowed to start the test from multiple devices at a time.
- There should be no disturbance in the surroundings. Sounds such as music or television are not permitted.
- Reading questions loudly or talking are not permitted.
- You should not have headphones, earphones, ear buds or any other type of listening equipment plugged in.
- You must not leave the room for any reason during exam.

Frequently Asked Questions and Resolutions

• Checking Windows and Browser Version

How to check version of Windows?

Select the Start button : Settings → System → About

Under Window Specification, check which version of Windows your device is running

• How to check version of Browser?

On your computer, open Chrome

At the top right, Click More

Click Help → About Google Chrome → Click Update

Click Relaunch



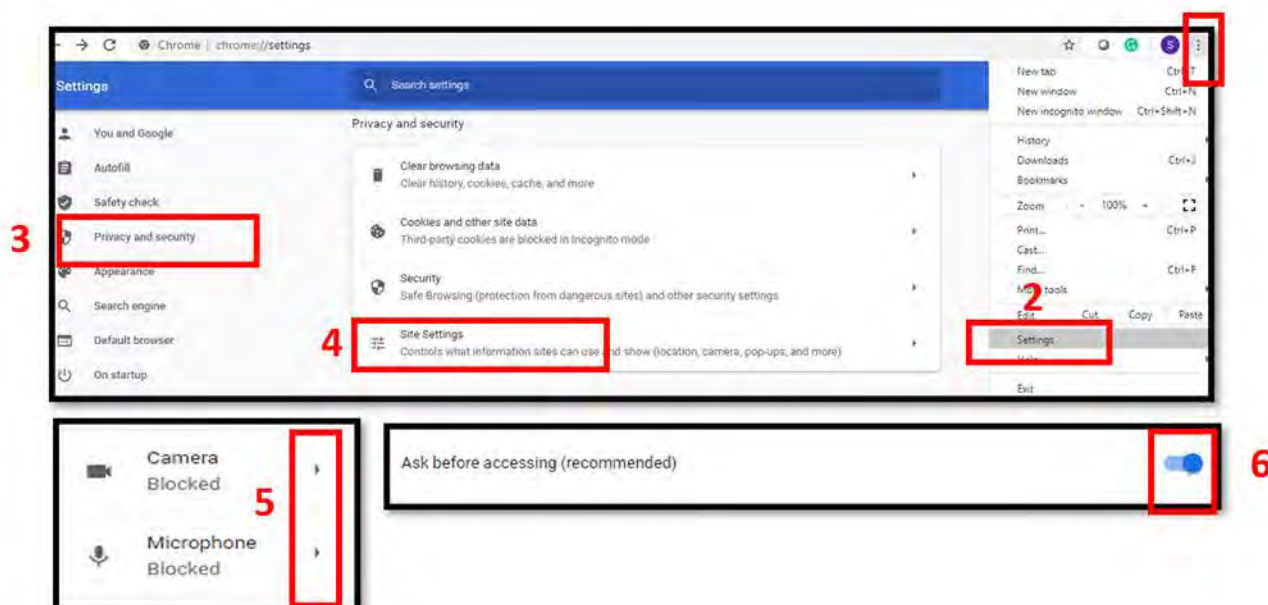
• Giving Access to Webcam and Microphone

Open Chrome on your computer

At the top right, Click More

Click 'Setting' → Click 'Privacy and Security' → Click 'Site Setting'

Allow Access to Webcam and Microphone

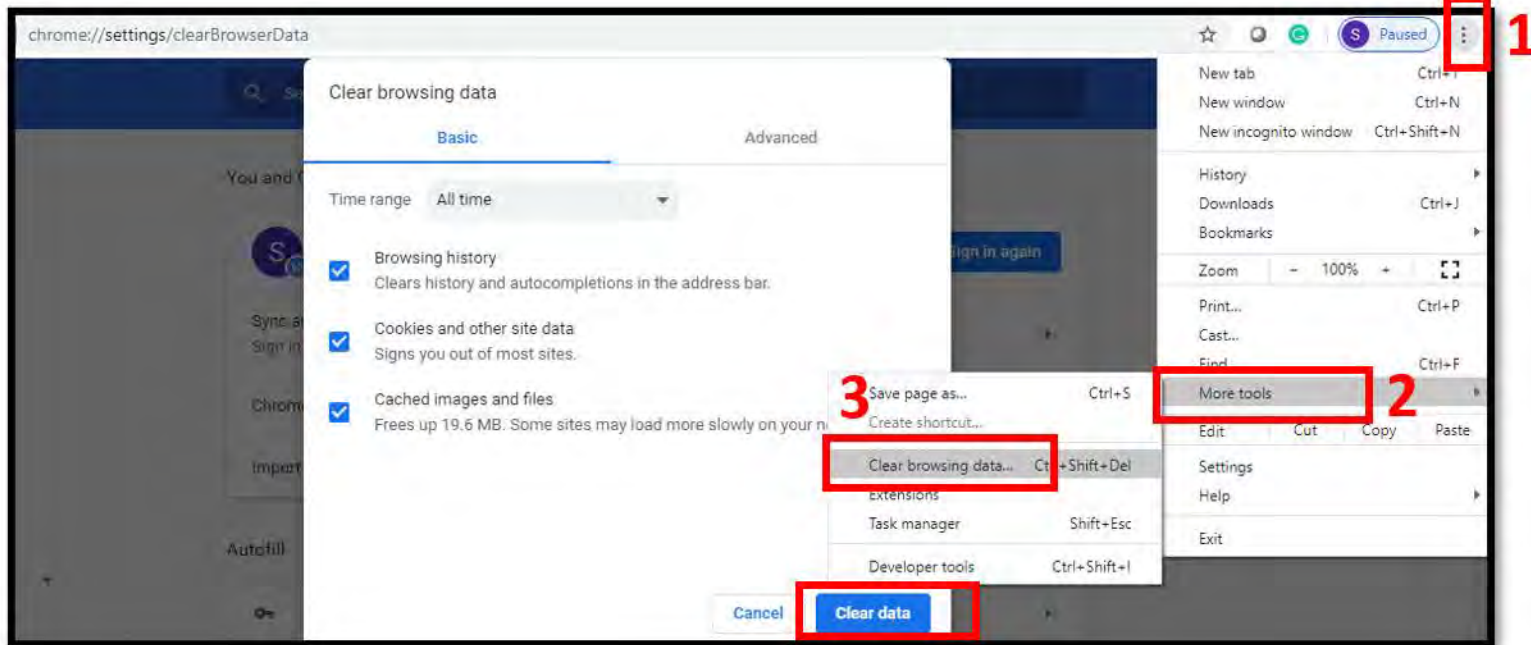


Clearing Cache from the System

Open Chrome on your computer

At the top right, Click More

Click 'More Tools' → 'Clear Browsing Data' → 'Clear Data'



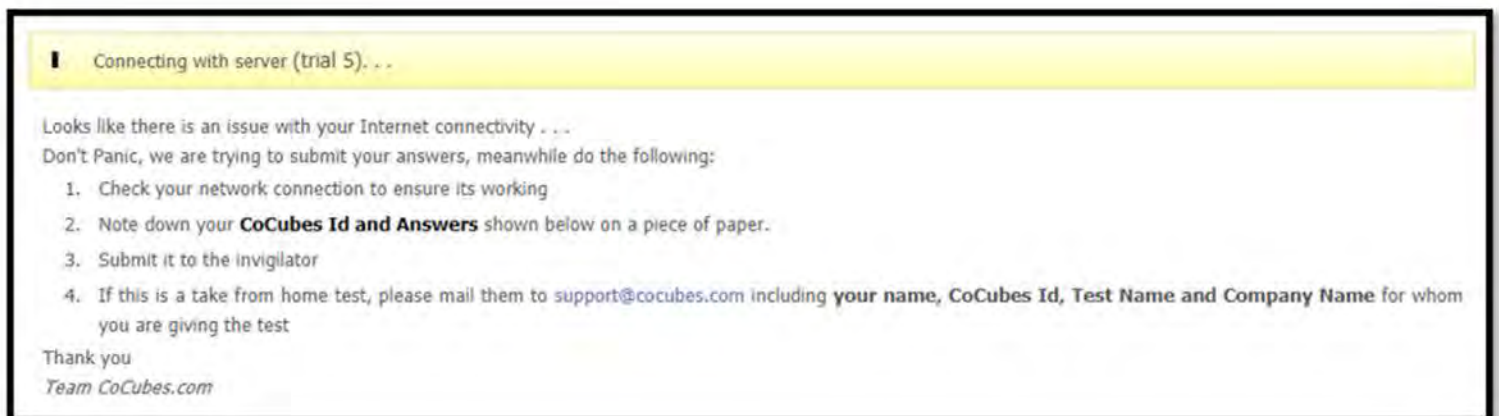
Common Errors

Connecting with Server

This error occurs when there is no internet connectivity during the test submission

Do not refresh or close the browser - System is trying to connect with internet

Answers will be automatically submitted as soon as internet is restored



Submission Failure

This error occurs when there is no internet connection during test submission

Do not refresh or close the browser

Note down – Question number, answer number, Application Number and the test name on the sheet.

Share the picture of the same with your Proctor.

Wait for the instruction before closing this page

A Your Answer Sheet Print

CoCubes Id: **844614**

Questions: 2

Attempted: 2

Following answers are not submitted, please note them . . .

Question #	Your Answer
1	2
2	1

Window Switch

This error occurs when you try to move out of the assessment.

Do not try to make a window switch, any such activity will lead to disqualification

NLAT 2020 Welcome Candidate

14 : 50
min sec

i Important Instructions & Guidelines

1 Section-1

Each set of questions in this examination is based on a single passage. Please answer each question on the basis of what is stated or implied in the corresponding passage, and in the question itself. In some instances, more than one option may be the answer to the question; in such a case, please choose the option that most accurately and comprehensively answers the question.

1. The central concern for Indian decision makers was the continuing influx of Hindu refugees from East Pakistan. Up to the end of July 1971, 7.23 million had taken shelter in India. By 15 December, an additional 2.67 million had poured in. From New Delhi's standpoint, the continuing flow of refugees gave the lie to the claims about impending normality in Pakistan. Then there was the growing economic burden of maintaining the refugees. The budget presented in May 1971 had provided 600 million rupees for the relief of refugees, but this sum was submerged by the scale of the deluge. In August, the government was forced to present a supplementary demand of 2,000 million rupees. By the third week of September, it was assessed that maintaining 8 million refugees in camps for six months at the rate of just 3 rupees per person per day would amount to 4,320 million rupees—about US \$576 million. The galloping costs of sheltering the refugees made a mockery of the government's original estimate for the fiscal deficit.

NLAT 2020 Welcome Candidate

13 : 42
min sec

i Important Instructions & Guidelines

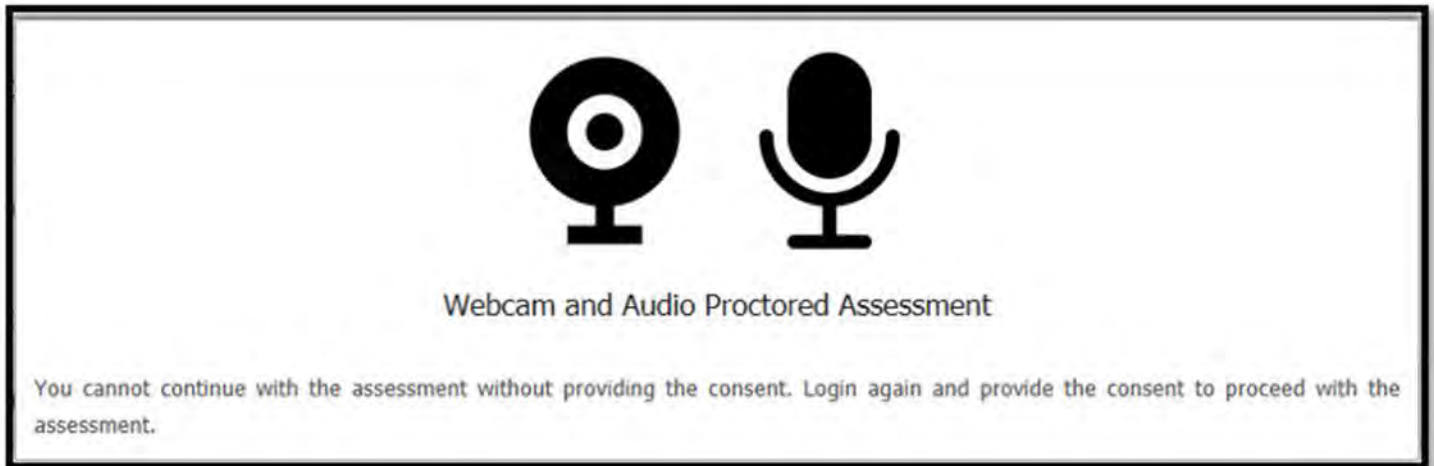
1 Section-1

Each set of questions in this examination is based on a single passage. Please answer each question on the basis of what is stated or implied in the corresponding passage, and in the question itself. In some instances, more than one option may be the answer to the question; in such a case, please choose the option that most accurately and comprehensively answers the question.

1. The central concern for Indian decision makers was the continuing influx of Hindu refugees from East Pakistan. Up to the end of July 1971, 7.23 million had taken shelter in India. By 15 December, an additional 2.67 million had poured in. From New Delhi's standpoint, the continuing flow of refugees gave the lie to the claims about impending normality in Pakistan. Then there was the growing economic burden of maintaining the refugees. The budget presented in May 1971 had provided 600 million rupees for the relief of refugees, but this sum was submerged by the scale of the deluge. In August, the government was forced to present a supplementary demand of 2,000 million rupees. By the third week of September, it was assessed that maintaining 8 million refugees in camps for six months at the rate of just 3 rupees per person per day would amount to 4,320 million rupees—about US \$576 million. The galloping costs of sheltering the refugees made a mockery of the government's original estimate for the fiscal deficit.

Webcam and Audio Proctored Assessment

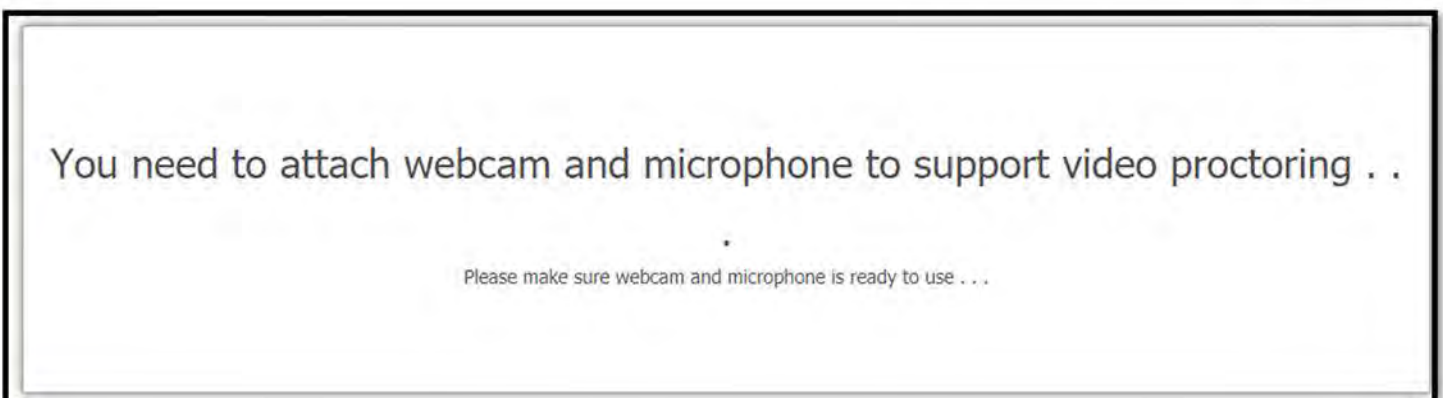
- This error occurs when you click on 'Do not Accept' on GDPR Guidelines that appear as soon you login into the test
- It is a Webcam and Audio Proctored test which means images and sound will capture as part of the assessment process
- To continue the test, please shutdown and restart your system again.
- Login into the test and click 'Agree' to give your consent



You need to attach webcam and microphone to support video proctoring

This error occurs when the System is unable to detect Audio and Webcam device. Please check below details - Please ensure the device that you are using has a Webcam and Microphone attached.

- It is mandatory requirement to start the assessment
- Please ensure to give Access of the same when system prompt for permission
- If not resolved, please clear Cache. Refer General Instructions (Pg 17)

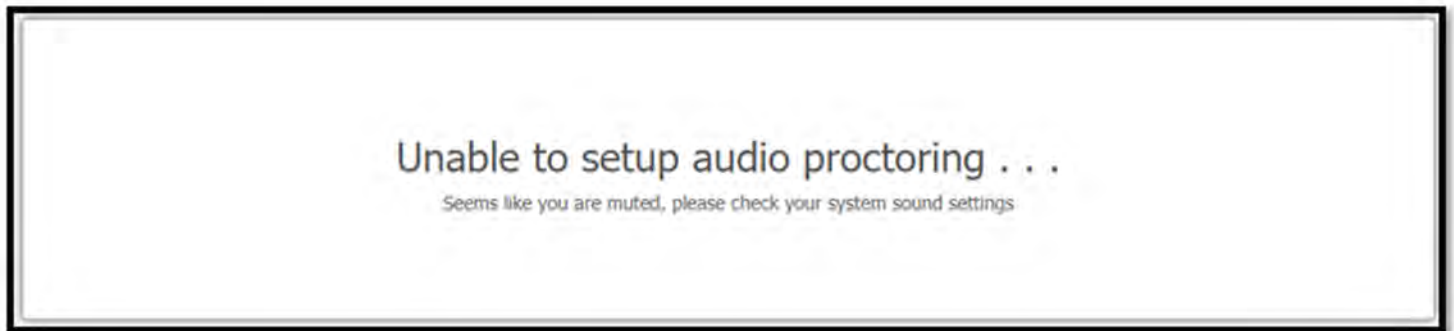


Unable to setup audio proctoring (Audio is on mute)

This error occurs when System is unable to detect Audio device.

Please check below details

- Your microphone should not be on Mute.
- If Speaker icon is on the taskbar, click on it to unmute.
- Provide Access to Camera and Microphone when asked for permission.
- If the issue persists, shut down your System and start again.
- Ensure that you are using the same System for the test
- Clear Cache.



Unable to detect face

- This error occurs when your face is not visible on the Webcam.
- Do not hide your face or move away from the camera at any point of time during the assessment
- Any such activity will lead to disqualification




Unable to detect face

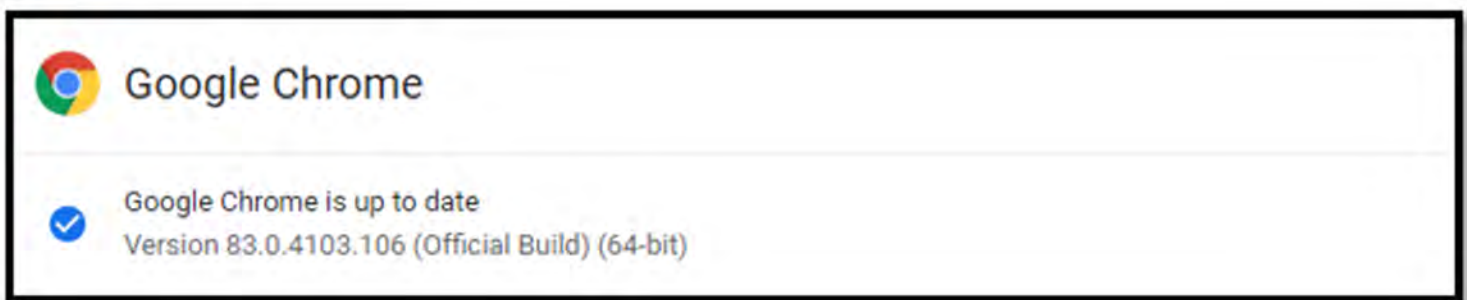
System is not able to detect your face please make sure you are in front of the webcam

Close


General Instructions (Laptop/Desktop/Mobile)

Use only Google Chrome (latest version) and Clear Cache and Browsing History before starting the exam.
Ensure that Camera and Microphone is not blocked -
Refer below steps to check/un-block the same:


1. Open Google Chrome
2. Click on the icon (). on extreme right side of the address bar. Select Setting.
3. Select 'Privacy and Security' and click on 'Site Settings'
4. Under Permissions, Unblock both Camera and Microphone
(in case it is showing unblock)
5. Please refer 'How to Clear Cache' for step by step process

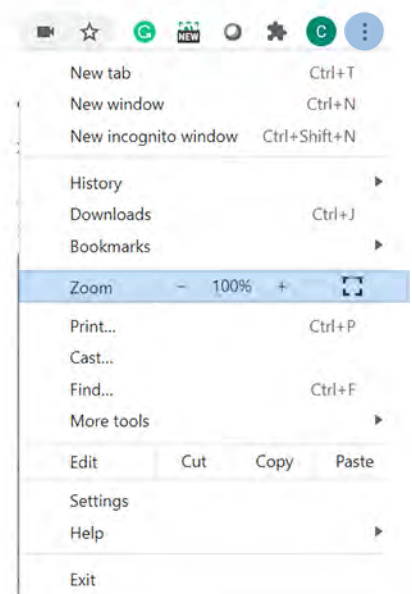


To check Google Chrome version

1. Open Google Chrome
2. On extreme right side of Address bar, Click on icon 
3. Click on 'Help' and then 'About Google Chrome'

To Zoom In and Out

1. Open Google Chrome
2. Click on the icon (). on extreme right side of the address bar.
3. Click on (+) to zoom in and (-) to zoom out.



These technical guides apply to a certain Windows OS version. Your system may be using a different OS or another version of Windows.

All the best



For any queries/concerns, write to
nlsadmissions@nls.ac.in