



PALANTIR MISSION CONTROL AT LAPD



Documentation
Release 0.1
May, 2017

Table of Contents

1. About Palantir Mission Control
2. Logging In
3. Frequently Asked Questions
4. Palantir Contact and Support
5. Cheat Sheet: Sample Workflows for Mission Creation, Evaluation and Crime Briefings
 - a. Situational Awareness Tab: Create a mission
 - b. Missions and Evaluate Missions Tabs: Evaluate a mission
 - c. CSOC Tab: Review cross border violent crimes
 - d. Compstat and Laser Tabs: Prepare for Compstat
6. User Manual: Features Descriptions

1. About Palantir Mission Control:

Palantir Mission Control is a mission creation, analysis, and reporting platform that quickly uncovers historic and recent crime trends for daily or weekly mission planning using a historic calendar tool, daily crime alerting system, and a mission planning and crime insights map. This platform can be used to create missions for patrol, metro and laser zones within a division or across division boundaries. Palantir Mission Control, located at [REDACTED], is a separate, analytical tool from the Palantir Crimeco Dashboard, located at <https://palantir.lapd.lacity.org/slate/documents/crimestatus>. The Palantir Crimeco Dashboard can be used for long term crime analysis and alerting.

The **Situational Awareness** page in Palantir Mission Control provides a close look at repeated historic crime due to a holiday or significant date. Custom dates, such as gang retaliation days or the last day of school, can be entered in the calendar. Selecting a date on the calendar pops open a historic crime map that shows the previous two years' crimes on that same date. **Crime Goal Alerts** allow captains to identify daily and weekly crime problems so that they can prepare targeted, efficient missions by crime type and shift.

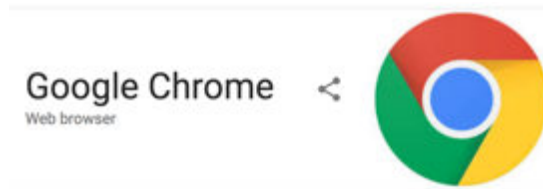
The **Crime Map** and **Mission Creation** tools allow users to geographically identify recent crimes by type, MO codes, and shift for a selected date range. Crime details can be viewed for each individual crime or in the aggregate. Cross area gang, gun and violent crimes can be analyzed to create missions that span division boundaries in the **CSOC tool**. Selected crimes can be exported into the Palantir Investigative Workspace for deeper analysis to uncover criminal networks.

The **Mission Reporting and Evaluation** tool will enable a division to assess whether a mission was completed and understand its impact through a detailed comparison of police presence, crime, and officer productivity using AVL, DPS, and crime data. Dosage is automatically aggregated and calculated for the selected mission area, including laser zones (in the Laser tab), to compare against crimes in those areas for any given time range.

2. Logging in

To log into Palantir Mission Control, please use the following steps:

1. Make sure you are connected to LAPD's network/internet. You can connect via your landline in your office (ex: your LAPD desktop will automatically be connected), or through a VPN if you are remote accessing in (ex: if you are trying to log in from home or not in the office).
 - a. Here is how you can get a VPN for remote, non-office, access:
 - i. Download Sonic Wall
 - ii. Open the app once it is downloaded
 - iii. For the network address, type in: inblue.lacity.org
 - iv. User name and password should be your serial number and LAN password.
 - v. If you continue to have trouble, please contact **LAPD ITB** for help.
2. Open up Google Chrome. You must open Palantir Mission Control in Google Chrome; The dashboard will not show up in Internet Explorer.



3. In the URL (or address field, not the search field), type in:



4. Your user name is [redacted].
5. Your password is [redacted].

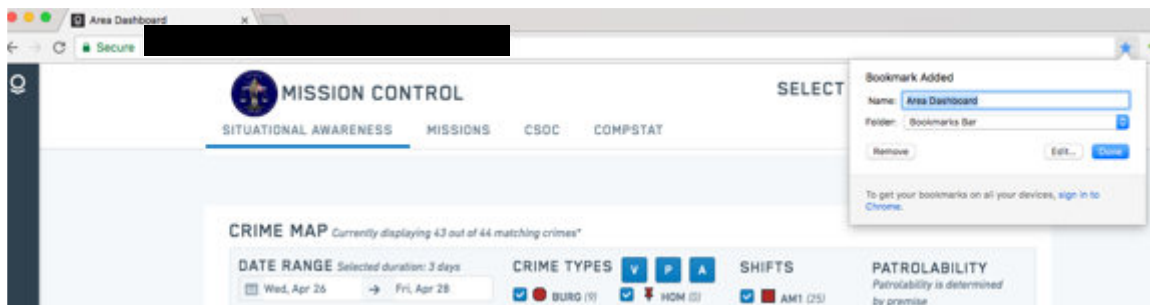
3. Frequently Asked Questions

1. I am having trouble logging in, what am I doing wrong?

- Answer: Are you using Google Chrome? Remember, the dashboard will not work on any other browser.
- Answer: Is your password up to date? If not, please contact LAPD ITB for support and password resetting.
- Answer: If you are remote (e.g. home) and not in the office at LAPD, are you VPN'd into LAPD's network? If not, you will need to download Sonic Wall/Aventail and work with ITB to set up your remote login. This is a security measure to protect LAPD's data.
- Answer: Have you typed in the correct URL/address into the URL line of Google Chrome? If not, you will receive the below error:



Note: you can "Bookmark" (or "Favorite") the link for easy access later by clicking on the "star" in the upper right hand corner of the address line (see below). Once you click on the "star", a pop up screen will allow you to "Name" the URL. Once you do that, click "Done". Now you can easily access the link which will show up as a tab below the address line in Google Chrome.



- Answer: Are you allowed access to LAPD's data? If so, and you are not able to access the dashboard, you may not have been granted permission. Please contact the Palantir support team (see, next section) for access.

2. Will this be available on iPad?

- Answer: Palantir Mission Control will be configured for iPad release after the desktop roll-out and training are conducted.

PALANTIR MISSION CONTROL AT LAPD

3. How is this different than the Palantir Crimeco Dashboard? Are they connected in any way?

- a. Answer: The Palantir Crimeco Dashboard, used every Monday during the Chief's Crime Briefing, is a high level, crime alerting tool that allows for fast, top-down analysis of weekly crime. The scope of the crime analysis is on a weekly basis and allows for trend analysis based on short, medium, and long term crime changes (represented through Crimeco). Palantir Mission Control is a day-to-day crime analysis platform that is intended to facilitate better crime insight generation, dosage and productivity recording, for mission planning and evaluation. You can easily access the Palantir Crimeco Dashboard from Palantir Mission Control by going to the Compstat tab.

4. What kind of analysis should I do in the Palantir Workspace versus Palantir Mission Control?

- a. Answer: Palantir Mission Control allows areas to drill down into key crimes, victims' patterns, suspect patterns, and weapons to conduct patrol and metro mission planning. The Palantir Workspace takes those specific crimes and patterns that are uncovered in Palantir Mission Control and can generate deeper analysis on the underlying causes, criminal networks, and related vehicle, crime, and suspect information. Both tools are meant to be used together in order to generate the most analytical insight into what is causing crime in a specific area and how to best resource against those crimes.

5. Who will have access to Palantir Mission Control?

- a. Answer: During the initial roll-out, May – June 2017, access to the Palantir Mission Control will be granted on a per-Area basis, as selected by the command staff. For now, we suggest granting access to Operational Leadership, Command staff, Watch Commanders reporting to the captains, LT's, SGT's and CAD analysts that facilitate the captains in mission planning and evaluation. This may change in the future depending on demand from captains. Please email Jocelyn Rivero and/or Pan Pan Fan to grant specific staff access.

6. Who can create missions in Palantir Mission Control?

- a. Answer: Users with access to Palantir Mission Control can create missions. Missions can be deleted at any time.

7. How do I select and filter? How do I de-select what I've previously selected?

- a. Answer: In this application, whether you're using the map or a bar chart, you can select any highlighted shape file or bar to filter the information. To deselect what you have already selected, just click on a space next to the map or bar chart.

PALANTIR MISSION CONTROL AT LAPD

8. How many missions can I have at any given time?

- Answer: You can create up to as many missions as needed for any given time. Though, we suggest that unused missions be deleted for organizational purposes and a better user interface.

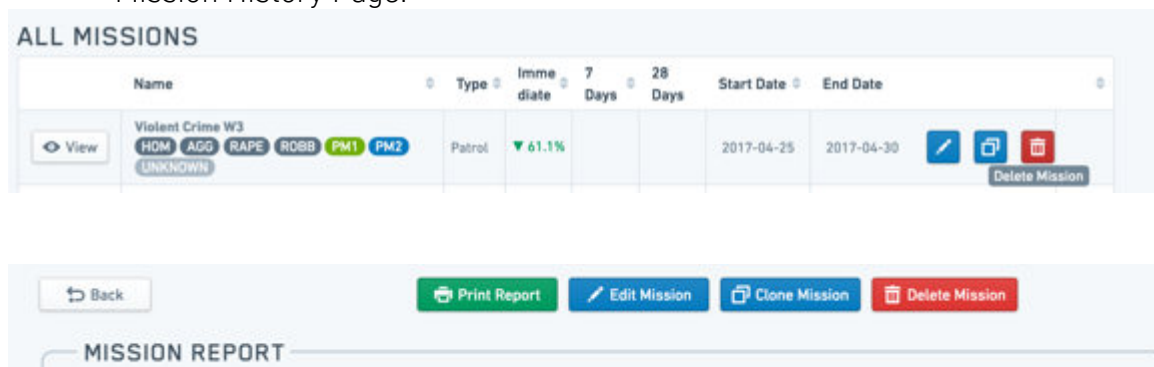
9. How do you delete a mission in Palantir Mission Control?

- Answer:

either the Mission History Page or the Mission Report (see below).



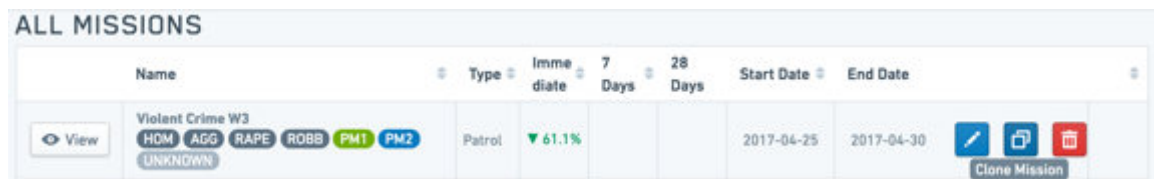
Mission History Page:



The screenshot shows the 'ALL MISSIONS' page. It features a table with columns: Name, Type, Immediate, 7 Days, 28 Days, Start Date, and End Date. A mission named 'Violent Crime W3' is listed with a status of 'Patrol' and a progress of '61.1%'. Below the table, there are buttons for 'Back', 'Print Report', 'Edit Mission', 'Clone Mission', and 'Delete Mission'. The 'Delete Mission' button is highlighted with a red border.

10. How do you reuse a mission in Palantir Mission Control?

- Answer: the "Clone Mission" button allows missions to be reused automatically for any selectable time period.

The screenshot shows the 'ALL MISSIONS' page. It features a table with columns: Name, Type, Immediate, 7 Days, 28 Days, Start Date, and End Date. A mission named 'Violent Crime W3' is listed with a status of 'Patrol' and a progress of '61.1%'. Below the table, there are buttons for 'Back', 'Print Report', 'Edit Mission', 'Clone Mission', and 'Delete Mission'. The 'Clone Mission' button is highlighted with a blue border.

11. Can I edit my mission?

- Answer: Yes, editing can be done at any stage of the mission: creation or even during the mission. This means that successful missions can be tweaked for future use by just making small edits to the instructions, shift focus, or mission boundaries. The "Edit Mission" button on the Mission

allow for editing.



PALANTIR MISSION CONTROL AT LAPD



ALL MISSIONS							
Name	Type	Immediate	7 Days	28 Days	Start Date	End Date	
View Agg Assault Focus AGG PM1 PM2	Patrol	▼ 17.6%	▼ 11.8%		2017-04-17	2017-04-24	Edit Mission

12. How long does it take for dosage to be calculated once I have created a mission?

- Answer: Dosage for any given shift takes about 4 hours to aggregate. This is because the AVL data pipelines have to run from LAPD's database into Palantir's integrated platform after the shift is done.

13. Where does crime data come from? How long does it take for crime data to be updated? What if a change is made in the crime narrative or record? Is that updated in the dashboard?

- Answer: Both the Palantir Crimeco Dashboard and Palantir Mission Control pull crime data directly from CCAD. The pipeline usually takes about 1-2 hours to run from CCAD into the Palantir integrated platform.

14. Where does the productivity data come from?

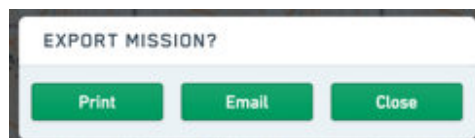
- Answer: Productivity data is integrated from CAMS (arrests) and AFDR (stops that include the number of citations and FIs), AFIS and TISI for detailed narrative of citations and FIs for exporting into the Palantir Investigative Workspace (note, the tables with these narratives will be delayed given the delay in entering dat).

15. Where does dosage data come from?

- Answer: dosage data for laser zones, patrol and metro mission currently come from AVL. AVL data on a current mission will be updated every 4-5 hours.

16. How do I share my mission?

- Answer: Missions can be shared via printing or via an email link. Once a mission is created, an option to print the mission will appear. Clicking "yes" will open up a new tab that allows for easy printing for distribution to watch commanders and patrol.



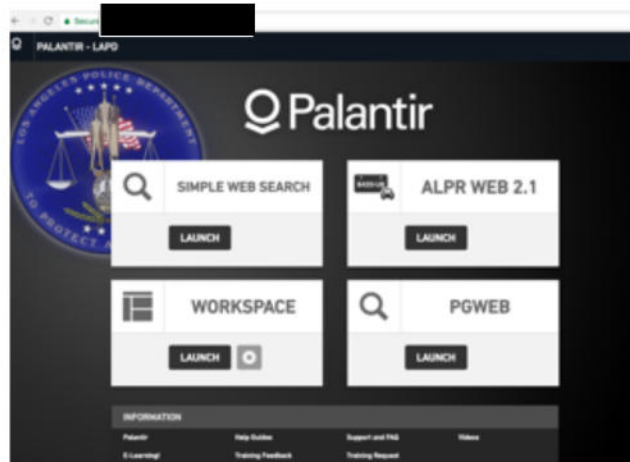
PALANTIR MISSION CONTROL AT LAPD

4. Palantir Contact and Support

For questions about Palantir Mission Control and/or the Palantir Crimeco Dashboard, please feel free to contact:



For questions about the Palantir Investigative Workspace (see below), please reach out to LAPD's John Warren.



For questions about the Palantir Crimeco Dashboard (see below) and uses for Compstat, please contact LAPD's Compstat team.



PALANTIR MISSION CONTROL AT LAPD

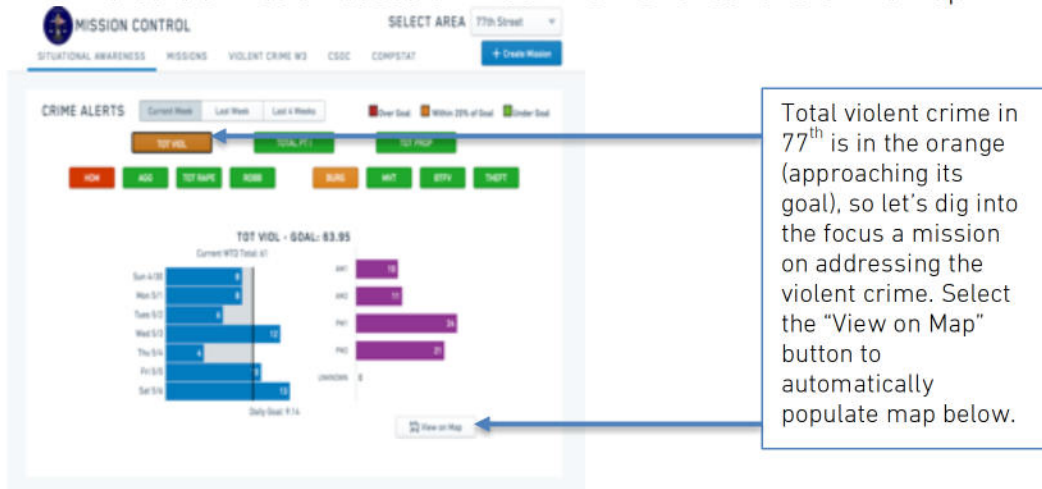
5. Getting Started: Cheat Sheet and Sample Workflows

(i) Create a mission

- Create a mission from the DP Calendar tool based on known crime spikes from previous years:



- Create a mission based on the Crime Alerts tool and Crime Map:



PALANTIR MISSION CONTROL AT LAPD

MISSION CONTROL

SELECT AREA

77th Street

+ Create Mission

SITUATIONAL AWARENESS

MISSIONS

VIOLENT CRIME W3

CSOC

COMPSTAT

CRIME MAP

Currently displaying 29 out of 29 matching crimes*

DATE RANGE

Selected duration: 3 days

Wed, Apr 26 → Fri, Apr 28

MO CODES

CRIME TYPES

☐ BURG (0)
 ☒ GTA (0)
 ☐ BTFV (0)
 ☐ GTP (0)
 ☐ THEFT (0)

☒ HOM (0)
 ☒ AGG (17)
 ☒ RAPE (1)
 ☒ ROBB (11)

SHIFTS

☒ AM1 (3)
 ☒ AM2 (8)
 ☒ PM1 (10)
 ☒ PM2 (8)
 ☒ UNKNOWN (0)

PATROLABILITY

Patrolability is determined by premise

☒ STREET (17)
 ☒ BUSINESS (1)
 ☒ RESIDENTIAL (9)
 ☒ OTHER (2)

Show/Hide RDs

Print Map

Weapon

Number of Crimes by Weapon

STRONG-ARM	7
SEMI-AUTOMATIC PISTOL	4
UNKNOWN FIREARM	4
KNIFE/CUTTING INSTRUMENT	3
CONCRETE BLOCK/BRICK	2
AIR PISTOL/REVOLVER/RIFLE/P-AINTBALL GUN	1
UNK TYPE CUTTING INSTR	1
BOTTLE, BROKEN	1
OTHER CUTTING INSTRUMENT	1
BELT FLAILING INSTRUMENT	1

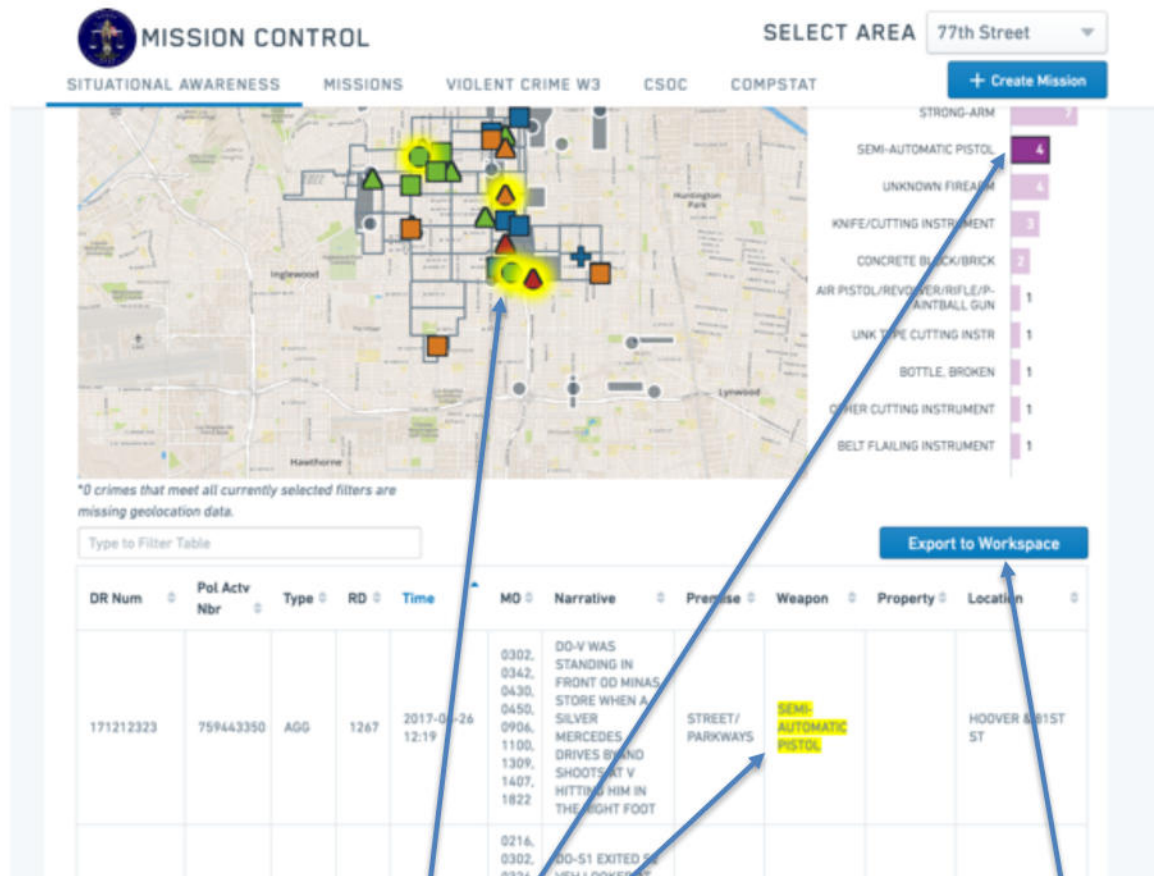
Type in an MO code, such as "shots fired" to filter by MO codes.

Date range and crime types are automatically populated by the filters in the Crime Alerts Tool, but any of the filters on this map can be used to adjust (date, crime type, shift, patrolability).

Select "street" to view outside crimes

Filter the table below and see the crimes highlight in yellow by clicking on the purple bars. Selecting each crime on the map will turn them red and will also filter the table below the map.

PALANTIR MISSION CONTROL AT LAPD



Filter the table below and see the crimes highlight in yellow by clicking on the purple bars to review the narratives and location of the crimes. Selecting each crime on the map will turn them red and will also filter the table below the map for ease of use during crime meetings. This workflow was modeled off of the daily and weekly crime status meetings, allowing areas to quickly evaluate and discuss crimes that occurred. Crimes can also be searched for in the "Search Box" on the upper left corner of the Crime Table.

Export selected crimes in Table to the Palantir workspace to dig into criminal network.

PALANTIR MISSION CONTROL AT LAPD

CREATE NEW MISSION

Mission Name
Gun Violence Suppression

Mission Type
Patrol

Start Date*
2017-05-08
Note: Mission start date is in the future

Shift Focus
☒ AM1 (3) ☒ PM1 (10) ☒ UNKNOWN (0)
☒ AM2 (8) ☒ PM2 (8)

Crime Type Focus
☐ BURG (0) ☐ GTP (0) ☒ AGG (17)
☐ GTA (0) ☐ THEFT (0) ☒ RAPE (1)
☐ BTFV (0) ☒ HOM (0) ☒ ROBB (11)

Notes
Describe the mission

Select Mission Locations* 1267,1257,1256

Filter Start: 2017-04-26
Filter End: 2017-04-28

Cancel Create New Mission

Select Mission Type: Selecting "Patrol" allows you to select RD's for the geographic boundary of mission. Crime Filter dates allow you to see what crime pattern the mission is based on. Other fields to fill out include Mission dates, name and instructions ("notes").

CREATE NEW MISSION

Mission Name
Gun Violence Suppression

Mission Type
Metro

Start Date*
2017-05-08
Note: Mission start date is in the future

End Date
YYYY-MM-DD

Shift Focus
☒ AM1 (3) ☒ PM1 (10) ☒ UNKNOWN (0)
☒ AM2 (8) ☒ PM2 (8)

Crime Type Focus
☐ BURG (0) ☐ GTP (0) ☒ AGG (17)
☐ GTA (0) ☐ THEFT (0) ☒ RAPE (1)
☐ BTFV (0) ☒ HOM (0) ☒ ROBB (11)

Notes
Describe the mission

Select Mission Locations* Hold down ctrl to select multiple

Filter Start: 2017-04-26
Filter End: 2017-04-28

Cancel Create New Mission

Selecting a metro mission allows for custom box drawing by selecting the "square" shaded box in the map and dragging the box to cover the mission area.

PALANTIR MISSION CONTROL AT LAPD

(ii) Evaluate a mission

MISSION CONTROL SELECT AREA 77th Street

SITUATIONAL AWARENESS MISSIONS VIOLENT CRIME W3 CSOC COMPSTAT

SEARCH FOR A MISSION
Search by name, RD, crime type, or shift
keyword search

MISSION ACTIVE ON
Pick a date

SEARCH BY RD

ALL MISSIONS

Name	Type	Imme- diate	7 Days	28 Days	Start Date	End Date
Unlabeled HOM AGG RAPE ROBB	Metro				2017-05-08	2017-05-08
No Borders with SOE	Metro				2017-05-08	2017-05-13
Metro Mission PM1 UNKNOWN	Metro				2017-05-01	
PM1 Violent Crime HOM AGG RAPE ROBB PM1	Patrol	▼ 22.2%			2017-05-01	2017-05-06
Violent Crime Suppression HOM AGG RAPE ROBB AM1 AM2	Patrol	▼ 52.7%	▼ 35.1%	▼ 43.2%	2017-04-06	2017-04-09
Find the bodies GTA HOM THEFT AGG RAPE ROBB	Patrol	▼ 18.8%	▼ 28.0%		2017-04-04	2017-04-04
Test 3 HOM AGG RAPE ROBB	Patrol	▼ 23.4%	▼ 6.2%	▼ 16.4%	2017-04-03	2017-04-08

Search for all missions related to a specific RD by clicking on the RD in the map. To unselect, click on a part of the map outside the division.

Search for a mission based on key word to see any relevant missions from the past that can be re-used. Take a look at a successful mission, indicated by the percent crime decrease for immediate (during mission), 7 days after, and 28 days after compared to the 7 days before the mission.

MISSION REPORT

VIOLENT CRIME SUPPRESSION
Start Date: 2017-04-06
End Date: 2017-04-09
Duration: 4 days
Crime focus: HOM, AGG, RAPE, ROBB
Shift focus: AM1, AM2
RD focus: 1253, 1243
Notes: Patrol keep extra watch near banks.

Crime Change

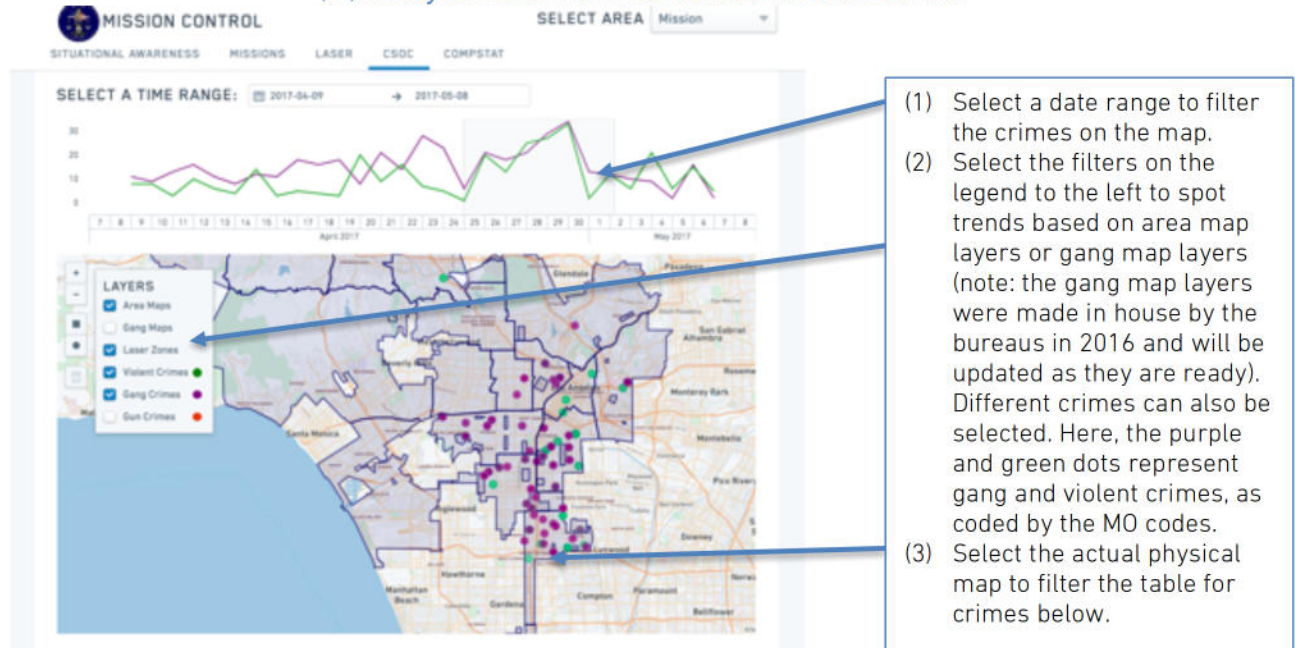
Immediate	7 Days	28 Days
▼ 52.7%	▼ 35.1%	▼ 43.2%

Crimes (3) Arrests (5) Field Interviews (3) Citations (4) Stops (59)

Select "Violent Crime Suppression" as seen above for crime reduction and evaluate it. Review the map of crimes, arrests, FIs, citations and stops along with % crime reduction. Scroll down the page to see dosage and productivity details. Every crime, arrest, citation, FI, and stop can be exported into the Palantir Workspace for crime network analysis, including chronic offenders.

PALANTIR MISSION CONTROL AT LAPD

(iii) Analyze violent crimes across division border



All crimes in the table are filtered by the map above. Once the crimes are listed, select the box and click "Export to Workspace" to open up the Palantir Investigative workspace, which has integrated over 20 datasets.

PALANTIR MISSION CONTROL AT LAPD

(iv) Prepare for Compstat for mission evaluation and laser zones

MISSION CONTROL

SELECT AREA
Mission

SITUATIONAL AWARENESS
MISSIONS
SYLMAR BOX
CSOC
COMPSTAT

Week	HOM	RAPE	RAPE2	RAPE	ROBB	AGG	VIOL	BURG	MYT	BTFV	THEFT	PROP	PT I	FIRE	HIT
2017-03-04	1	0	1	1	7	19	28	16	26	27	25	94	122	2	1
2017-03-11	0	0	1	1	9	15	25	10	26	38	13	87	112	0	0
2017-03-18	0	0	0	0	5	16	21	10	28	31	21	90	111	3	1
2017-03-25	0	1	1	2	9	12	23	20	16	24	16	76	99	3	3

MISSIONS: 2017-02-26 TO 2017-03-25

Sylmar Box
Start Date: 2017-03-23
End Date: 2017-03-27

Daytime AGGs Sepulveda Corridor
Start Date: 2017-03-23

Top of hat
Start Date: 2017-03-20
End Date: 2017-03-24

auto theft
Start Date: 2017-03-14
End Date: 2017-03-16

GTA and BTFV focus
Start Date: 2017-03-14
End Date: 2017-03-18

SYLMAR BOX
Start Date: 2017-03-23
End Date: 2017-03-27
Duration: 5 days
Crime focus: BURG, GTA, BTFV, THEFT, AGG, ROBB
RD focus: 1916, 1917, 1918
Notes: Focus on Foothill Corridor for 211 & GTA suppression. Footbeats Sylmar Park in RD 1916

Crime Change

Immediate	7 Days	28 Days
▼ 53.3%	▼ 27.8%	

Crimes (2) Arrests (2) Field Interviews (1) Citations (2)

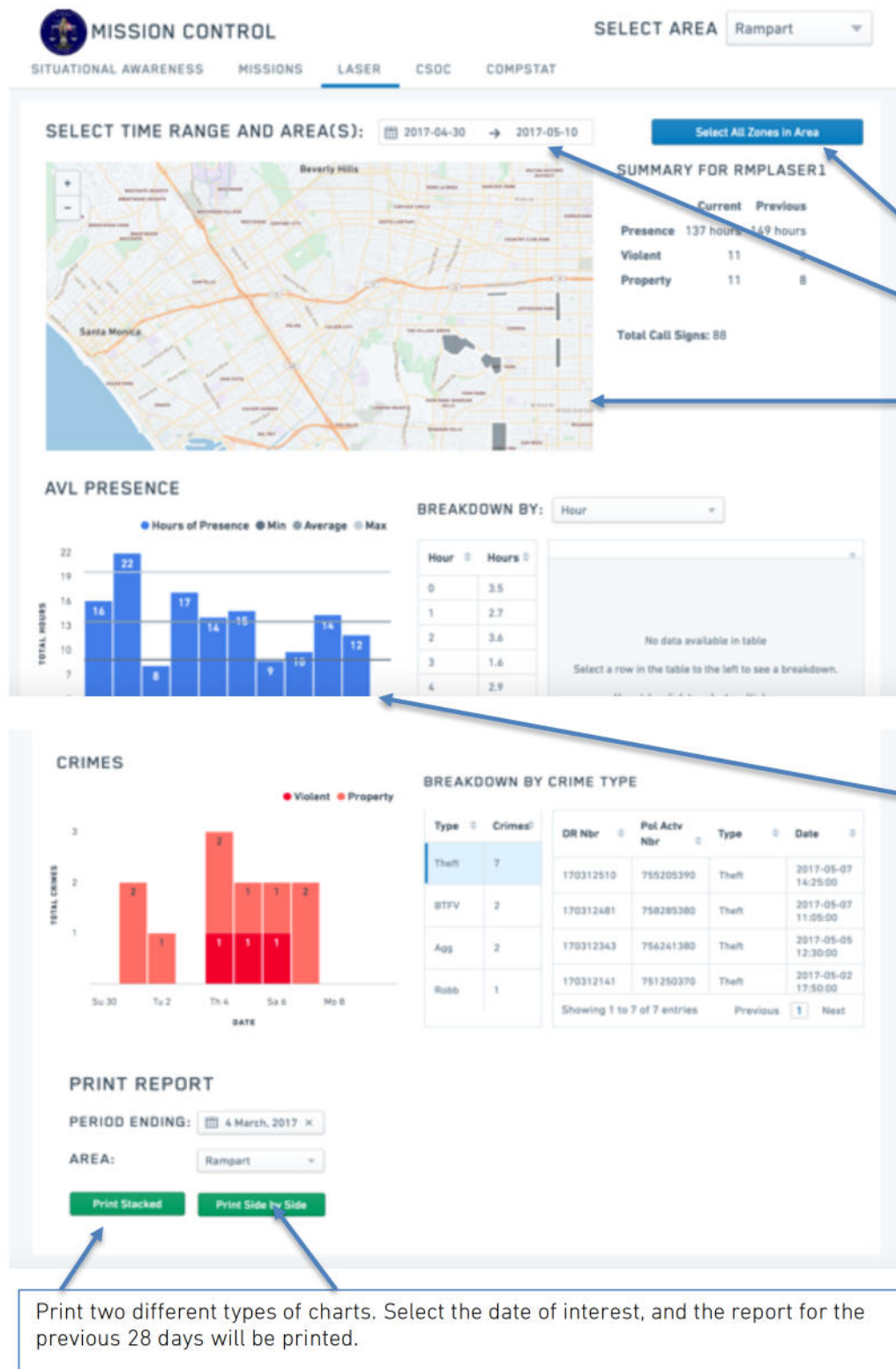
View

Previous four weeks Red & White chart will be displayed to review top crime issues. Link to Palantir Crimeco Dashboard also available.

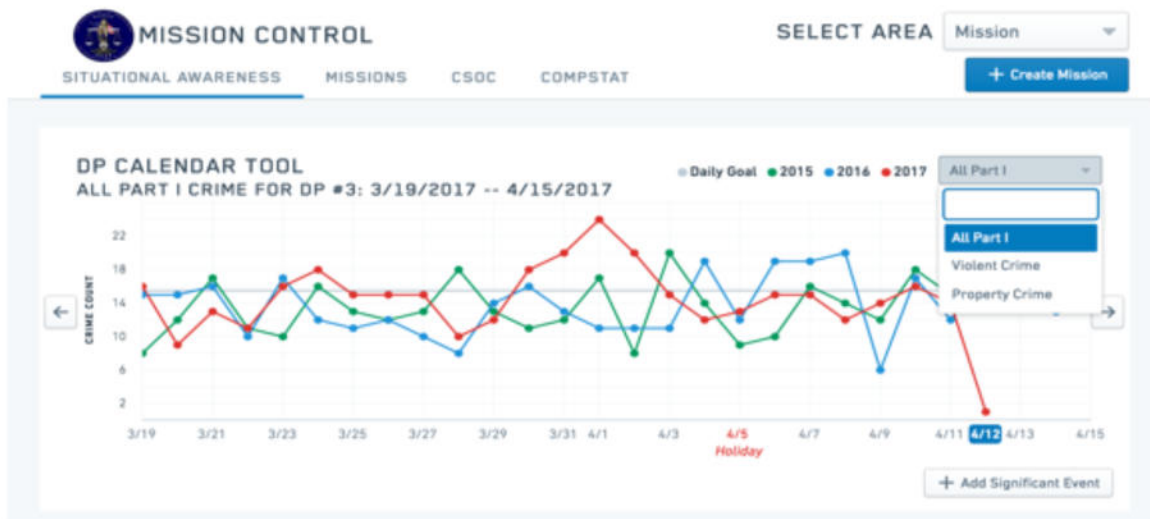
All missions that were active during the time period as displayed in Red & White are layed out. Click on the mission to have the mission report populate below.

Select the "eye" icon that pops when when hovered at the upper right hand corner of the mission box to go to the Mission Evaluation page to review in more detail.

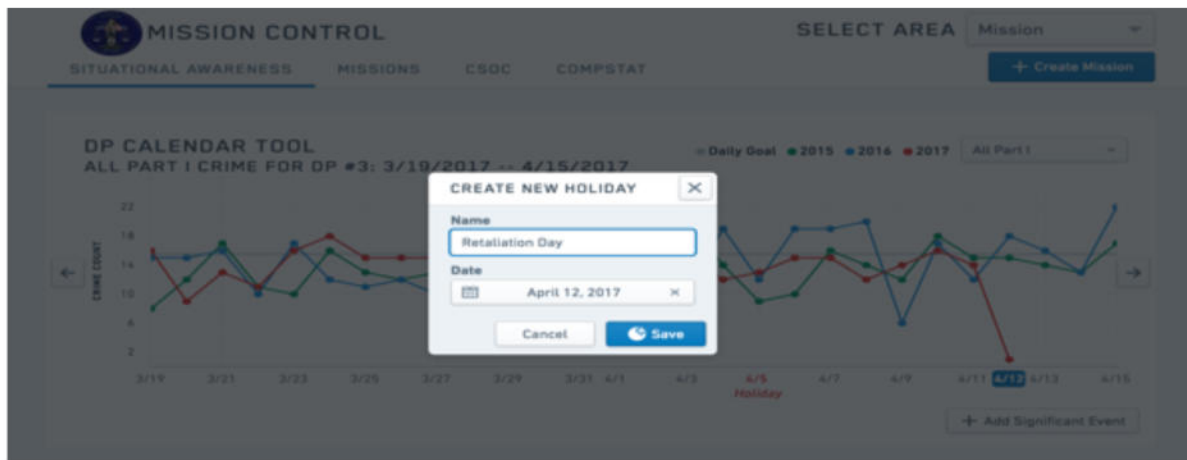
PALANTIR MISSION CONTROL AT LAPD



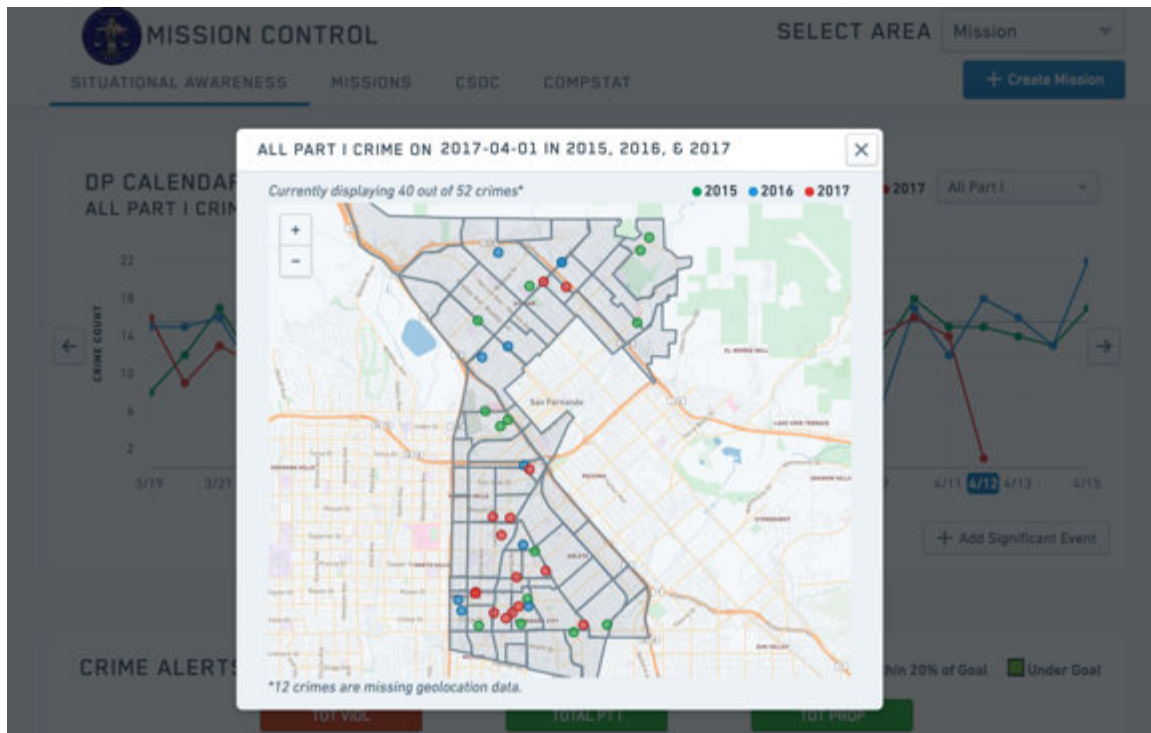
6. Feature Descriptions and User Manual



Pictured Above: The **DP Calendar Tool** allows Areas to select a daily crime view of All Part 1, Violent, or Property crime for any given Area or Bureau. The arrows to the right and left on the calendar can be selected to allow views of future dates. →



PALANTIR MISSION CONTROL AT LAPD



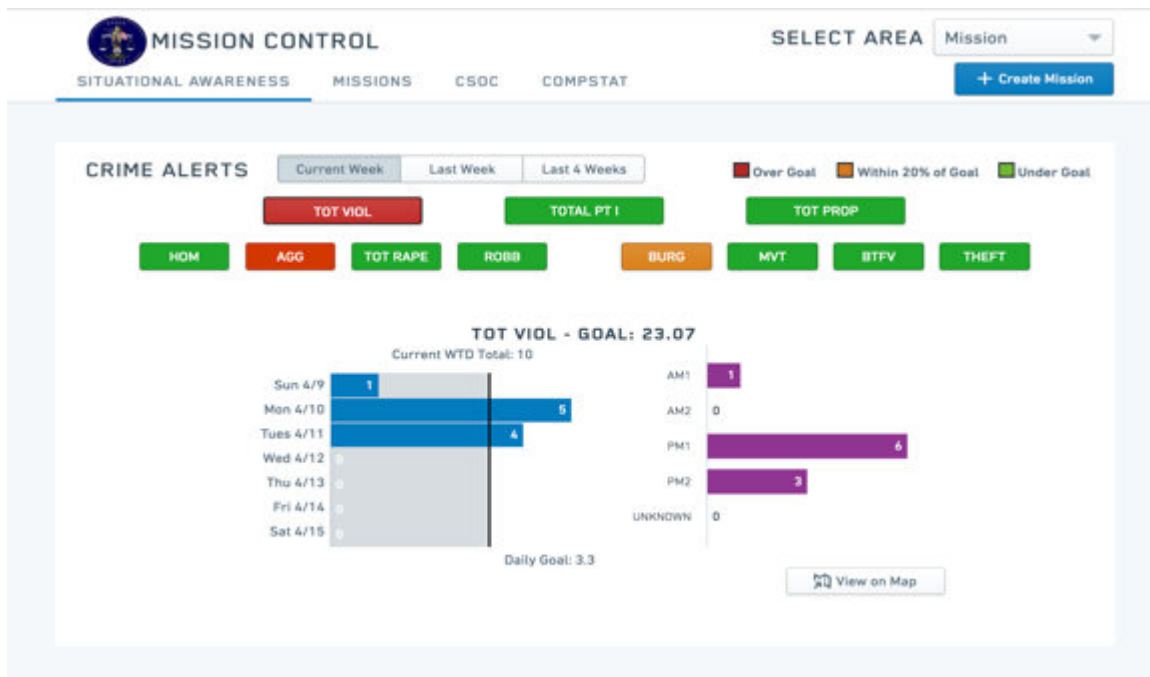
Pictured Above: By selecting any given day on the **DP Calendar Tool**, a map of the previous two years' crimes, along with the current year's crimes, pops up. This allows Area Captains and analysts to identify cyclical, seasonal patterns in crime spikes. The green dots represent crimes from 2015; the blue represent crimes from 2016; and the red represents crimes from the current

If a significant event, such as a gang retaliation day, is identified, the **DP Calendar Tool** allows custom "Significant Dates/Holidays" to be added and saved to the calendar. To do this, select "Add Significant Event" and fill in the name of the event and date and hit "Save". This allows the Area to be prepared year after year for any significant events that may be known to cause crime



PALANTIR MISSION CONTROL AT LAPD

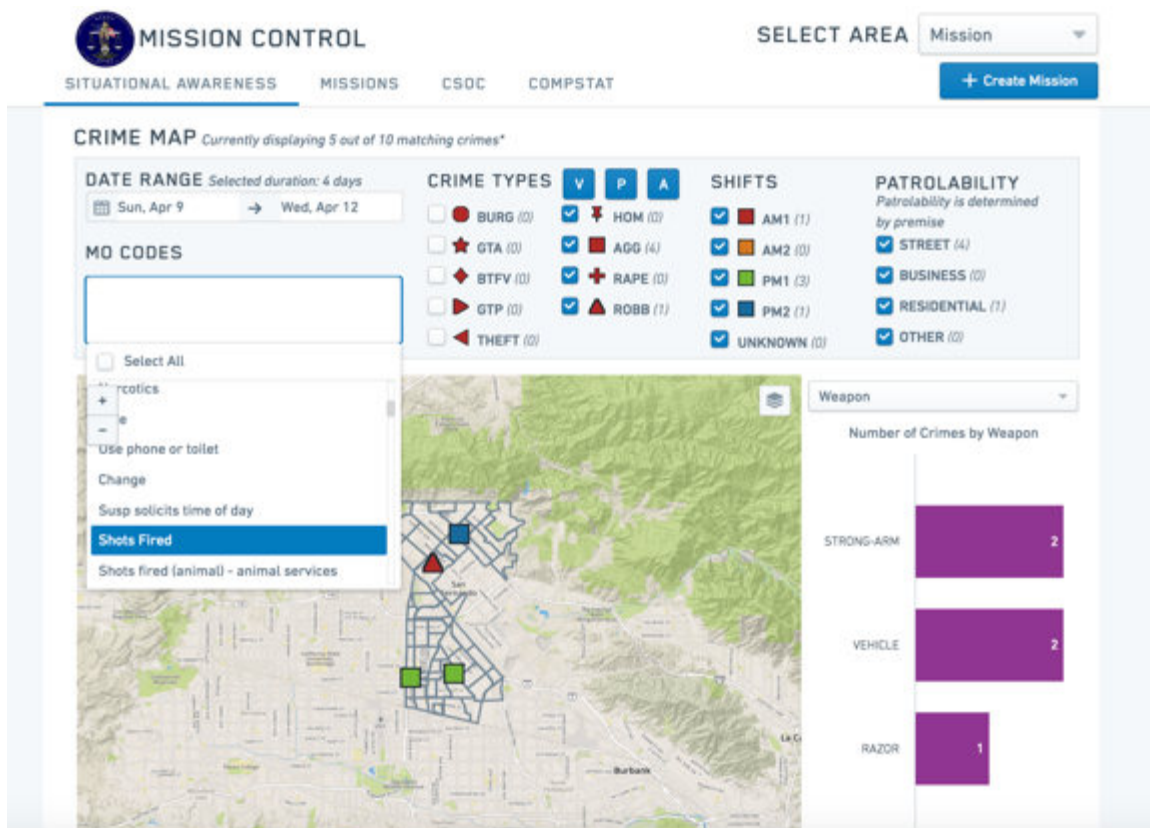
(i) Situational Awareness – Crime Alerts Tool



Picture Above: The **Crime Alerts Tool**, located below the **DP Calendar** tool, alerts Captains when the Area's daily crime rate (broken down by violent, property, all part 1, or by each crime type) will cause the Area to exceed its weekly crime goal for that crime type for the current week, last week or the last 4 weeks. A "Red" crime alert (ex: total violence, agg above) indicates that the Area is accumulating that crime type at a rate that will exceed the crime goal. The crime goal is calculated to match the goals in the Red & White 2.0 chart (99% of the previous years' goals). An "Orange" crime alert (ex: burg above) indicates that the Area is accumulating that crime type at a rate within 20% of the crime goal. A "Green" crime alert indicates the area is below the crime goal. These crimes are also broken down by the shifts during which they occurred. You can select each crime type button and select "current week", "last week" or "last 4 weeks" to see the crime breakdown.

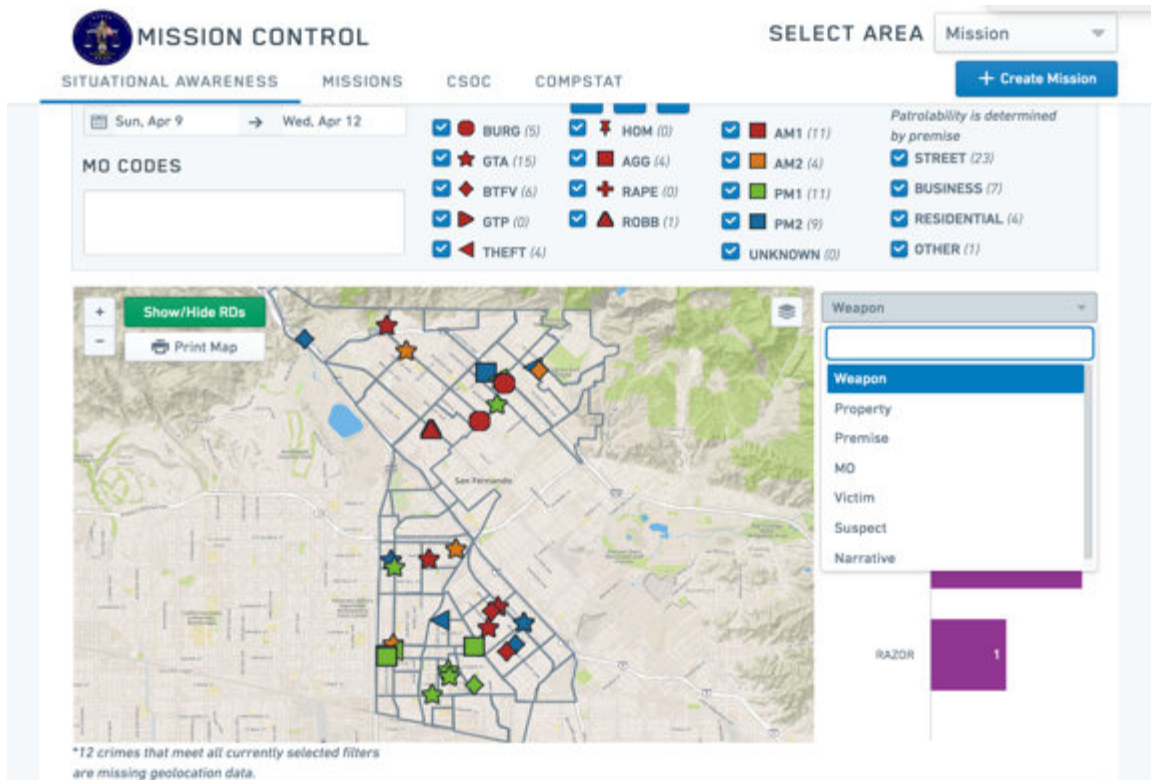
(ii) Situational Awareness – Crime Map and Insights Histogram

PALANTIR MISSION CONTROL AT LAPD

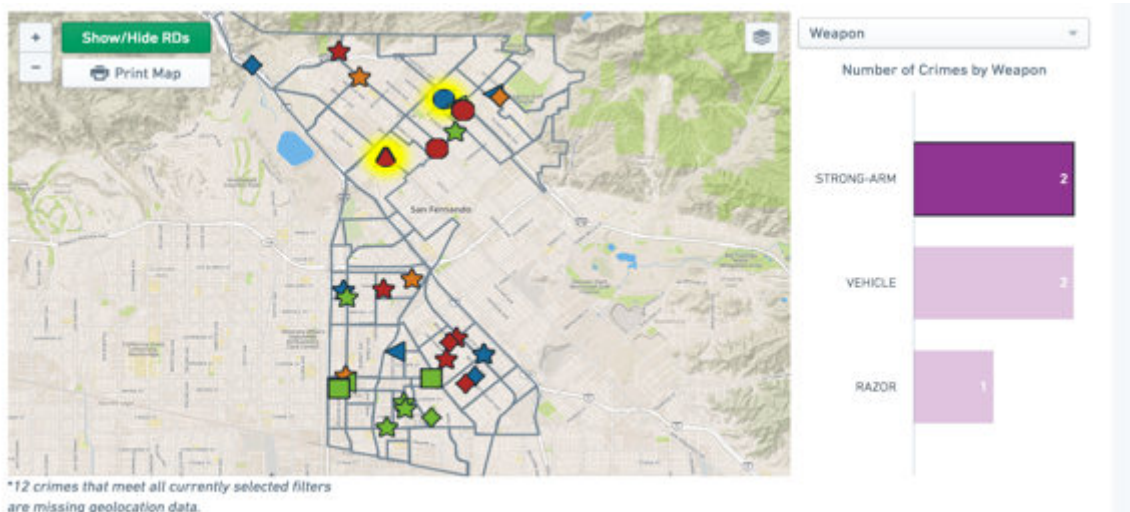


Pictured Above: From here, the Captain or Analyst can automatically add all the crimes from the **Crime Alerting Tool** to the **Crime Map**. Or, the Captain can manually use the selector buttons on the map to select options for viewing the crimes. For example, the **Crime Map** has options to display crimes by Date Range, Crime Types, Shifts, Premise and MO Code. The **Crime Map** can also display the RD numbers on the map and includes labeled anchor points and laser zones, as identified by the Area. This allows Area Captains to drive insights on whether specific types of crimes appear to be connected to anchor points, or if laser zones should be moved due to new crime clusters that emerge. Captains can also select "Patrolability" filters, such as indoor versus outdoor crimes by filtering for where the crimes occurred: street, business, residential or other.

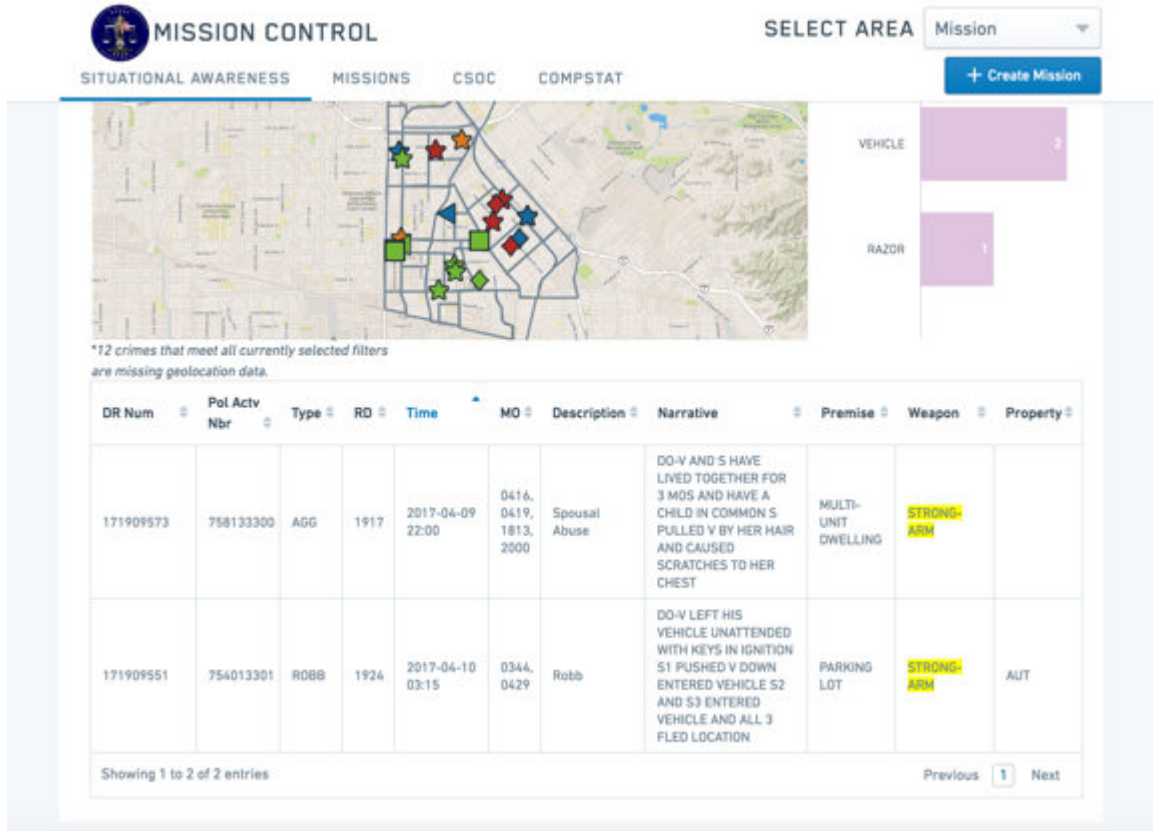
PALANTIR MISSION CONTROL AT LAPD



Pictured Above and Below: A drop down menu to the right of the **Crime Map**, the Insights Histogram, has the option to highlight crime patterns based on Weapon used, Property taken, Premise, MO code, Victim, Suspect or Narrative key word. Once selected, a histogram (pictured below the drop down) populates with crime patterns based on the selected category. Selecting any one of the histograms will highlight (in yellow) the crimes on the crime map that includes this MO code (see below).



PALANTIR MISSION CONTROL AT LAPD



Pictured Above: In addition to the **Crime Map** and **Insights Histograms**, a table below includes all the details of the selected crimes, such as the narrative and DR number for further investigation. This is especially useful during mission planning meetings, CSOC meetings, and roll call briefings/conference calls where the crimes are discussed in detail. Selected any crime on the Map or **Insights Histogram** will filter the table below. Key words that are selected in the **Insights Histogram** are highlighted in yellow.

PALANTIR MISSION CONTROL AT LAPD

(iii) Situational Awareness – Mission Creation Tool

MISSION CONTROL

CREATE NEW MISSION

Mission Name
New Mission

Start Date* 2017-04-12 **End Date** YYYY-MM-DD

Shift Focus
☒ AM1 (11) ☒ PM1 (11) ☒ UNKNOWN (0)
☒ AM2 (4) ☒ PM2 (9)

Crime Type Focus
☒ BURG (5) ☒ GTP (0) ☒ AGG (4)
☒ GTA (15) ☒ THEFT (4) ☒ RAPE (0)
☒ BTFV (6) ☒ HOM (0) ☒ ROBB (1)

Notes
Describe the mission

Select Mission RDs* Hold down ctrl to select multiple RDs

Filter Start: 2017-04-09
Filter End: 2017-04-12

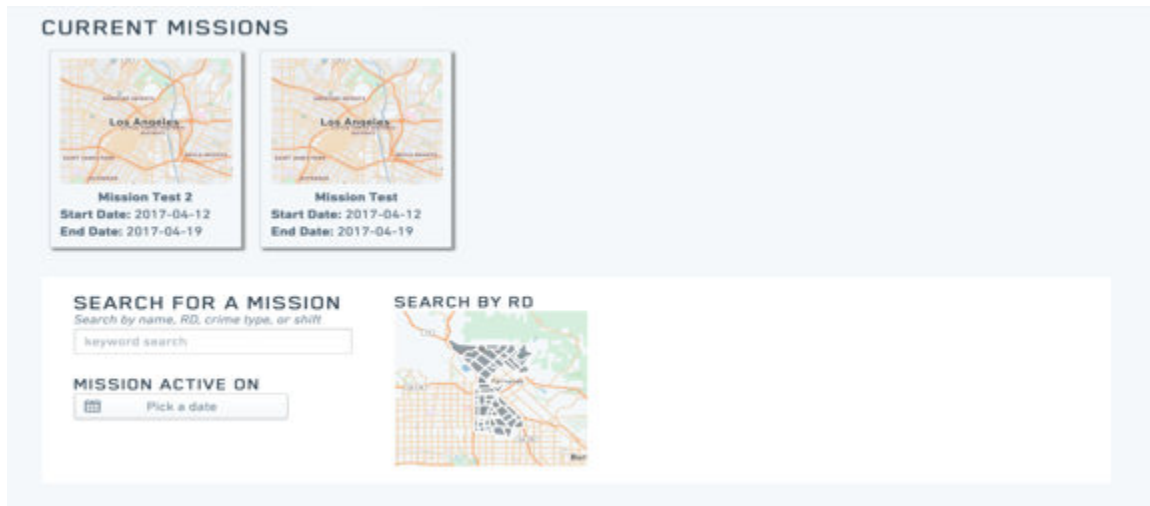
Cancel Create New Mission

Pictured Above: Missions can be created by selecting the **"Create Mission"** button on the upper right hand corner of the page. This opens up a Mission Map with the filtered crimes from the Crime Map. To create a mission, the user must identify a Mission Name, State/End Date, Shift Focus, Crime Type Focus, and select the Mission RDs. By clicking on the **"Create New Mission"** button on the bottom of the Mission Map, the new mission will now be saved and can have the option to be printed for dissemination.

Various mission types can be created based on patrol or metro missions. To create a patrol mission, RDs of interest must be selected. To create a metro mission, use the drop down to select the mission type. A box will appear on the upper left hand corner of the map. Use the square to create a custom box around the streets of interest (see below).

PALANTIR MISSION CONTROL AT LAPD

(iv) Missions – Active Missions, Historic Missions, and Laser Zones

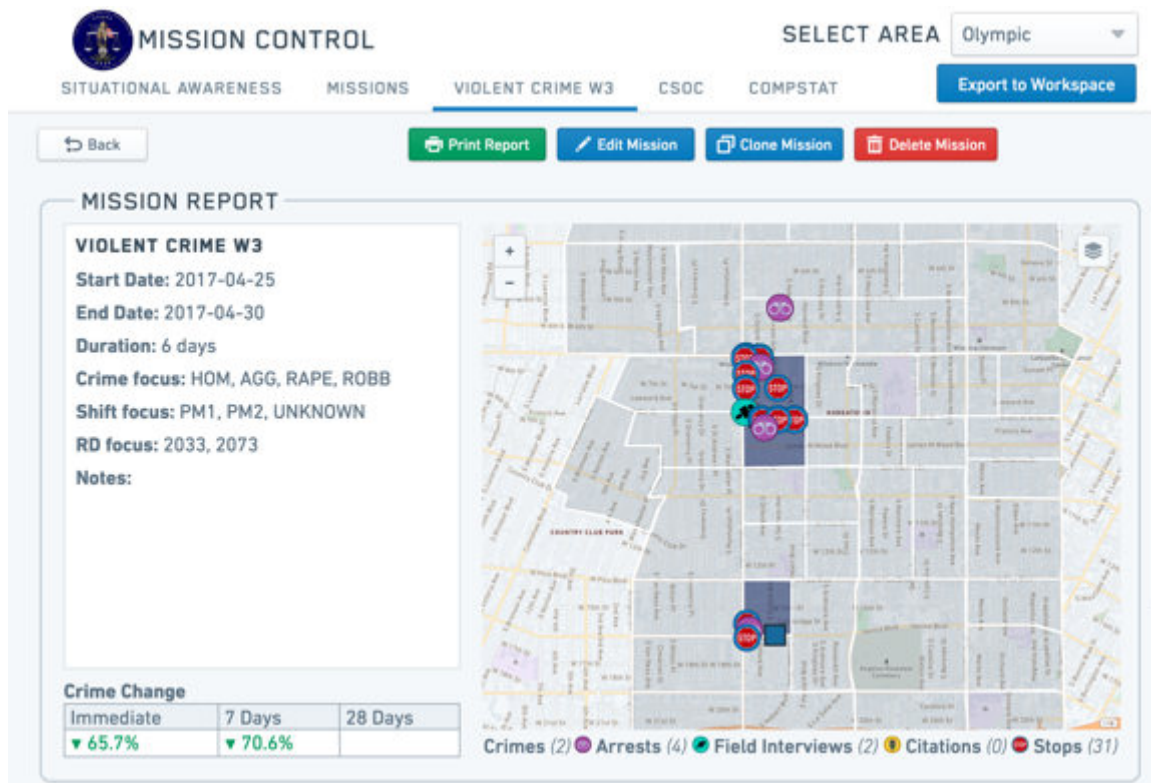


Pictured Above and Below: Once the mission is saved, the user is taken to the **Active and Mission History Page**. All current or active missions are displayed at the top of the page. Past missions can be searched for by name, RD, crime type, shift or date. A table displays all historic missions once a search is conducted, filtering for missions that matched the search criteria. These missions can be closed, deleted, or edited for future use. They also have a crime change percentage attached to them showing whether crime increased during (“immediate”), 7 days after, or 28 days after the mission, compared to the 7 days before. A green percentage indicates crime decrease (and therefore successful missions) while a red percentage indicates crime increase.

ALL MISSIONS									
	Name	Imme- diate	7 Days	28 Days	Start Date	End Date			
View	Mission Test 2				2017-04-12	2017-04-19			
View	Mission Test				2017-04-12	2017-04-19			
View	Untitled BURG GTA BTPV GTP THEFT PM1 PM2	▼ 58.8%			2017-04-05	2017-04-07			
View	Sylvan Box BURG GTA BTPV THEFT AGG ROBB	▼ 53.3%	▼ 27.8%		2017-03-23	2017-03-27			
View	Daytime AGG Sepulveda Corridor GTA AGG RAPE ROBB AM2 PM1 UNKNOWN	▼ 14.4%	▲ 80.0%		2017-03-23	2017-03-28			
View	Top of hat AM1 PM2 UNKNOWN	▼ 50.0%	▲ 3.6%		2017-03-20	2017-03-24			
View	auto theft GTA BTPV AM1 AM2	▼ 36.4%	▼ 30.3%		2017-03-14	2017-03-14			
View	GTA and BTPV focus BURG GTA BTPV GTP THEFT	▼ 30.0%	▲ 1.9%		2017-03-14	2017-03-18			
View	Property Crime Focus HOM AGG RAPE ROBB	▼ 16.7%	▼ 19.4%	▲ 1.4%	2017-02-15	2017-02-21			
View	Extra Footbeat for Aggs HOM AGG RAPE ROBB	▲ 57.5%	▲ 42.5%	▲ 50.0%	2017-03-01	2017-03-10			
View	Weekend surge HOM AGG RAPE ROBB	▼ 12.5%	▼ 50.0%	▲ 6.2%	2017-03-11	2017-03-12			

PALANTIR MISSION CONTROL AT LAPD

(v) Mission Evaluation – Mission Reports



Pictured Above: By selecting a mission in the **Mission History Table**, the user is taken to the **Mission Evaluation** of that mission. This **Mission Evaluation** page includes a **Mission Report** (see above) that includes the summary details of that mission, the crime change, and displays the crimes along with the arrests, FIs, stops, and citations of that mission. For the first time, crime effects, officer activity, and crime are displayed automatically in one place so that the viewer can take an analytical and holistic view of the mission.

PALANTIR MISSION CONTROL AT LAPD

(vi) Mission Evaluation – Mission Reports, Dosage



Pictured Above: In addition to the **Mission Report**, dosage is also recorded for that mission. This shows the total number of AVL hours, broken down into three broad categories of Presence, Other and Unknown, during the mission period (in grey) for each day (blue histogram). The days are selectable for further breakdown by RD, Hours, Call Sign and Status Code. For the first time, Captains can now automatically identify whether the mission was completed or not and drill down into details on mission hours and cars. Given that the AVL data is updated every few hours to show this information, they can now take immediate action in instructing patrol to spend more or fewer hours in the mission area based on viewing the dosage and crimes.

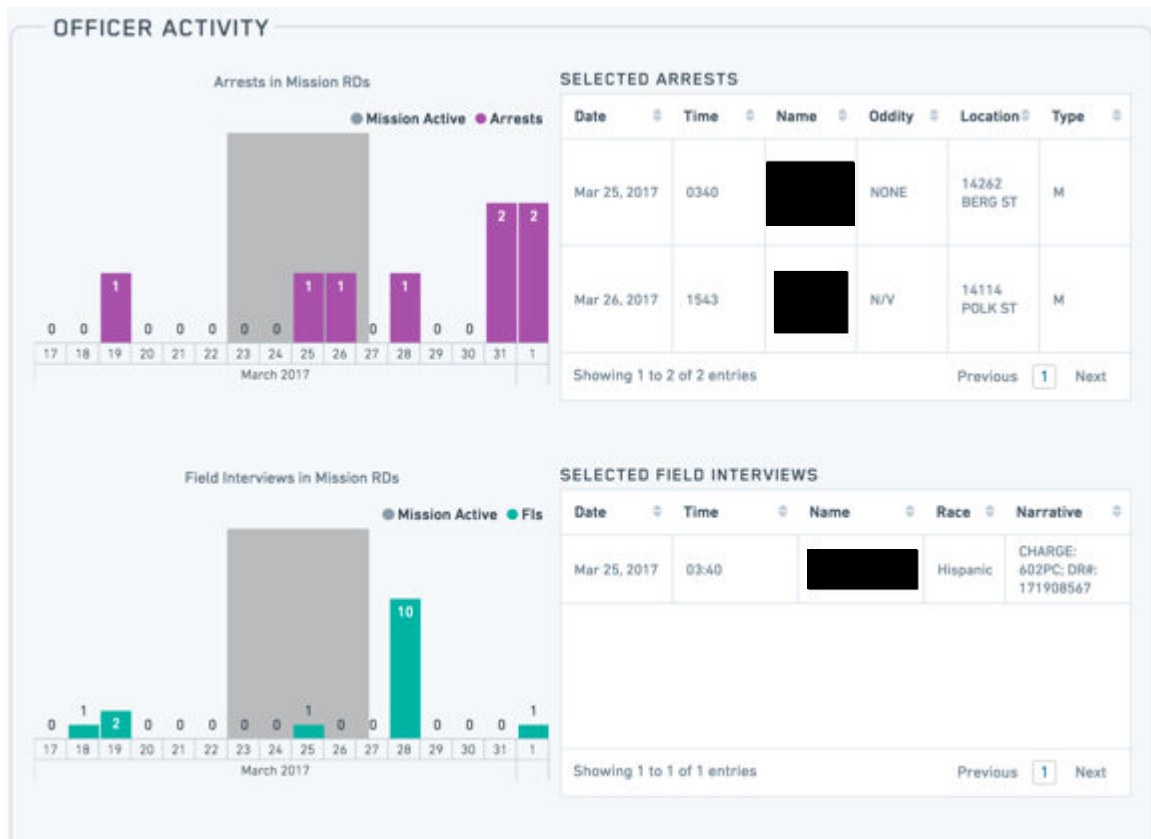
PALANTIR MISSION CONTROL AT LAPD

(vii) Mission Evaluation – Mission Reports, Crime Effectiveness & Office Activity



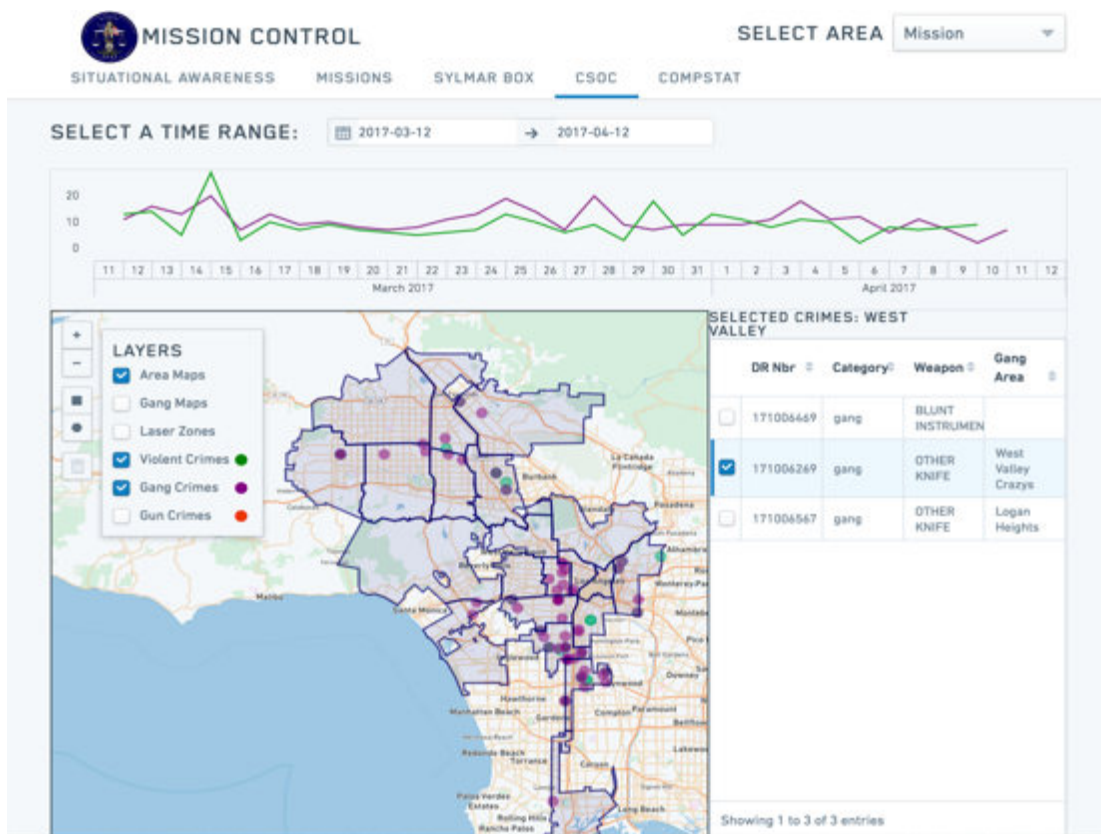
Pictured Above and Below: Charts and tables detailing the crimes, arrests, FIs, stops and citations are also integrated and displayed for the **Mission Evaluation**. The mission dates are highlighted in grey and each histogram bar, representing a single day, can be selected for detailed breakdowns.

PALANTIR MISSION CONTROL AT LAPD

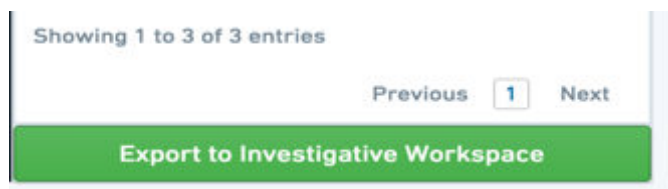


(viii) CSOC – Violent Crimes with Gang Maps

PALANTIR MISSION CONTROL AT LAPD

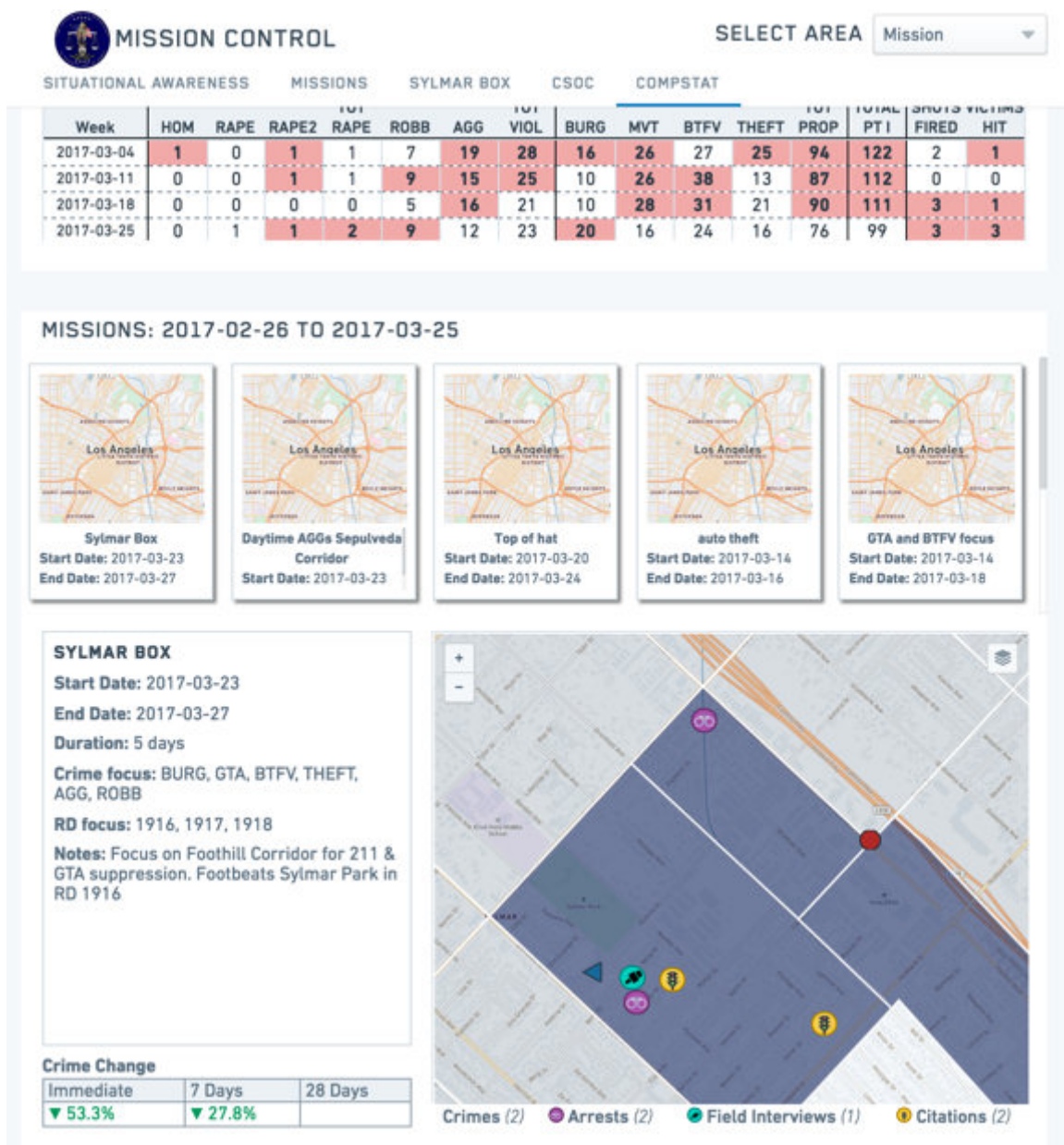


Pictured Above: The **CSOC tool** displays all violent crimes across the city. Specifically, crimes with gang and gun MO codes can be selected and displayed. Several map layers allow for different crime drill downs. This can include selecting by geographic Area, Gang Territory, or Laser Zone. Once the map layer is selected, the map will display the new crime information using the selected map layer. Selecting any one layer on the map itself will drill down and populate the table to the right with DR number, MO code, weapon used, and territory (either Area, Gang, or Laser zone). Each crime can be selected in order to be exported as objects in the Palantir Investigative Space. By selecting the green "Export" button (pictured below), the Palantir Workspace will automatically load and open, displaying the crime objects on the Graph View.



(ix) *COMPSTAT– Red & White, Mission Reports for an Extraction Period*

PALANTIR MISSION CONTROL AT LAPD



Pictured Above: A **COMPSTAT** preparation tab is also available for Captains to prepare for COMPSTAT. This page allows Captains to view the Red & White Chart to see which crimes are the most problematic for any given extraction period. All missions created for that extraction period are also displayed. By selecting any one of those missions, Captains can now review and discuss in detail what actions they have taken to mitigate and fight crime.