



## UTAH

### SUMMARY

- Utah is in the red zone for cases, indicating 101 or more new cases per 100,000 population last week, with the 5th highest rate in the country. Utah is in the red zone for test positivity, indicating a rate at or above 10.1%, with the 4th highest rate in the country.
- Utah has seen an increase in new cases and stability in test positivity over the last week.
- The following three counties had the highest number of new cases over the last 3 weeks: 1. Salt Lake County, 2. Utah County, and 3. Davis County. These counties represent 82.6% of new cases in Utah.
- Biggest increases in cases are seen in smaller and more rural counties; among larger population centers, biggest increases are seen in Cache and Washington counties.
- Sewage data from Utah Department of Environmental Quality suggest increasing incidence across the Wasatch Range.
- 69% of all counties in Utah have moderate or high levels of community transmission (yellow, orange, or red zones), with 41% having high levels of community transmission (red zone).
- During the week of Sep 28 - Oct 4, 8% of nursing homes had at least one new resident COVID-19 case, 37% had at least one new staff COVID-19 case, and none had at least one new resident COVID-19 death. There is an apparent outbreak at a facility in Hurricane (58 cases) and multiple facilities in Orem, Draper, Saint George, and Provo have more than 3 cases.
- Utah had 254 new cases per 100,000 population in the last week, compared to a national average of 100 per 100,000.
- Current staff deployed from the federal government as assets to support the state response are: 1 to support operations activities from FEMA and 6 to support epidemiology activities from CDC.
- Between Oct 3 - Oct 9, on average, 34 patients with confirmed COVID-19 and 13 patients with suspected COVID-19 were reported as newly admitted each day to hospitals in Utah. An average of 90% of hospitals reported either new confirmed or new suspected COVID patients each day during this period; therefore, this may be an underestimate of the actual total number of COVID-related hospitalizations. Underreporting may lead to a lower allocation of critical supplies.

### RECOMMENDATIONS

- We have included cases, test positivity, and deaths by month in the back of your packet to show the time sequence in Utah and the country as a whole. These demonstrate the impact of comprehensive mitigation efforts when implemented effectively and that partial or incomplete mitigation leads to prolonged community spread and increased fatalities.
- Adequate surveillance and adequate testing are extremely important as cases rise. Use antigen or other rapid tests. Implement regular surveillance and frequent testing among critical staff, such as teachers, clinic staff and staff working at long-term care facilities (LTCFs) and all other congregate living settings, prisoners and prison staff, public transportation workers, and first responders as more tests become available. Explore expansion of wastewater surveillance to follow trends in communities.
- Report results from all antigen tests, including negative as well as positive results.
- Continue to closely monitor hospital and ICU utilization, resources, and capacity at the local level and put data on all websites (state and local) as part of educational campaigns.
- Work with regional and state emergency agencies, as needed, to ensure hospital capacity remains sufficient and all staff are trained on current treatment protocols, including early use of antiviral and antibody therapies for hospitalized patients.
- Clear mitigation policies with effective implementation are critically important, especially in areas with increasing incidence among those at risk for severe disease and decreasing hospital capacity; Utah's incidence and test positivity are the highest they have ever been, but restrictions are low to minimal across the state. Post clear recommendations along with triggering thresholds for mitigation levels and community mitigation ordinances on the state website for local communities to deliberate and enact.
- Recent data suggest that transmission is now increasingly driven by smaller, more intimate gatherings of family, friends, and neighbors; enhance education on the risks of transmission to vulnerable persons (elderly and those with risk factors) during social and familial gatherings and ensure culturally-specific messages are delivered to Native American and Hispanic communities.
- Maintain focus on institutions of higher education (IHEs) and ensure all are conducting vigorous testing and have sufficient capacity for surveillance of students and staff on campus; require all IHEs to post complete and updated testing and result data online.
- Expand contact tracing capacity as case numbers rise by adjusting interview depth and task-shifting to ensure contact interview is conducted within 48 hours of diagnosis and recommendations for isolation or quarantine are made clear.
- Any nursing homes or LTCF with 3 or more cases of COVID per week over any of the past 3 weeks (see above cities) should have conducted immediate inspection surveys with support for corrective action to ensure COVID-19 safety guidance and considerations are being fully implemented.
- Specific, detailed guidance on community mitigation measures can be found on the [CDC website](#).



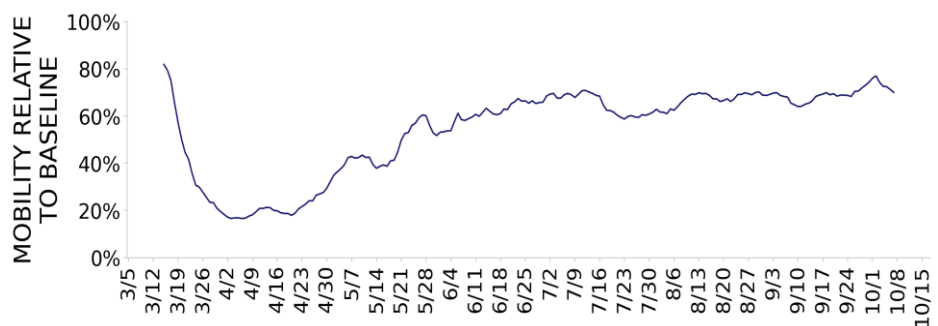


## UTAH

STATE REPORT | 10.11.2020

	STATE, LAST WEEK	STATE, % CHANGE FROM PREVIOUS WEEK	FEMA/HHS REGION, LAST WEEK	UNITED STATES, LAST WEEK
NEW COVID-19 CASES (RATE PER 100,000)	8,128 (254)	+22%	24,547 (200)	327,190 (100)
VIRAL (RT-PCR) LAB TEST POSITIVITY RATE	13.8%	+0.3%*	8.7%	5.8%
TOTAL VIRAL (RT-PCR) LAB TESTS (TESTS PER 100,000)	86,103** (2,686)	+3%**	309,098** (2,521)	6,936,223** (2,113)
COVID-19 DEATHS (RATE PER 100,000)	34 (1.1)	+31%	197 (1.6)	4,908 (1.5)
SNFs WITH ≥1 NEW RESIDENT COVID-19 CASE (≥1 NEW STAFF CASE)	8% (37%)	+1%* (+6%*)	11% (30%)	10% (21%)
SNFs WITH ≥1 NEW RESIDENT COVID-19 DEATH	0%	-1%*	4%	4%

## MOBILITY



\* Indicates absolute change in percentage points.

\*\* Due to delayed reporting, this figure may underestimate total diagnostic tests and week-on-week changes in diagnostic tests.

**DATA SOURCES** – Additional data details available under METHODS**Note:** Some dates may have incomplete data due to delays in reporting. Data may be backfilled over time, resulting in week-to-week changes.**Cases and Deaths:** State values are calculated by aggregating county-level data from USAFacts; therefore, the values may not match those reported directly by the state. Data is through 10/9/2020; last week is 10/3 - 10/9, previous week is 9/26 - 10/2.**Testing:** CELR (COVID-19 Electronic Lab Reporting) state health department-reported data through 10/7/2020. Last week is 10/1 - 10/7, previous week is 9/24 - 9/30.**Mobility:** Descartes Labs. This data depicts the median distance moved across a collection of mobile devices to estimate the level of human mobility within a county. The 100% represents the baseline mobility level prior to the pandemic; lower percent mobility indicates less population movement. Data is anonymized and provided at the county level. Data through 10/7/2020.**SNFs:** Skilled nursing facilities. National Healthcare Safety Network. Data are reported separately for cases among residents and staff. Last week is 9/28-10/4, previous week is 9/21-9/27.



# UTAH

STATE REPORT | 10.11.2020

## COVID-19 COUNTY AND METRO ALERTS\*

Top 12 shown in table (full lists below)

### METRO AREA (CBSA) LAST WEEK

### COUNTY LAST WEEK

#### LOCALITIES IN RED ZONE

**5**  
▲ (+1)

Salt Lake City  
Provo-Orem  
Logan  
St. George  
Heber

**12**  
▲ (+5)

Salt Lake  
Utah  
Davis  
Cache  
Washington  
Tooele  
Wasatch  
Box Elder  
Sanpete  
Juab  
Sevier  
Garfield

#### LOCALITIES IN ORANGE ZONE

**2**  
▼ (-2)

Ogden-Clearfield  
Cedar City

**5**  
▼ (-5)

Weber  
Summit  
Iron  
Millard  
Morgan

#### LOCALITIES IN YELLOW ZONE

**2**  
▲ (+2)

Price  
Vernal

**3**  
▲ (+1)

Carbon  
San Juan  
Uintah

Change from previous week's alerts:

▲ Increase

■ Stable

▼ Decrease

\* Localities with fewer than 10 cases last week have been excluded from these alerts.

**Note:** Lists of red, orange, and yellow localities are sorted by the number of new cases in the last 3 weeks, from highest to lowest. Some dates may have incomplete data due to delays in reporting. Data may be backfilled over time, resulting in week-to-week changes.

**DATA SOURCES** – Additional data details available under METHODS

**Cases and Deaths:** State values are calculated by aggregating county-level data from USAFacts; therefore, the values may not match those reported directly by the state. Data is through 10/9/2020; last week is 10/3 - 10/9, three weeks is 9/19 - 10/9.

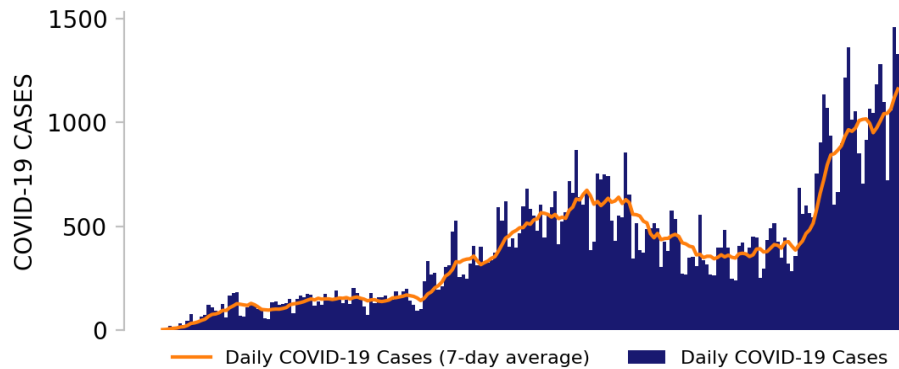
**Testing:** CELR (COVID-19 Electronic Lab Reporting) state health department-reported data through 10/7/2020. Last week is 10/1 - 10/7.



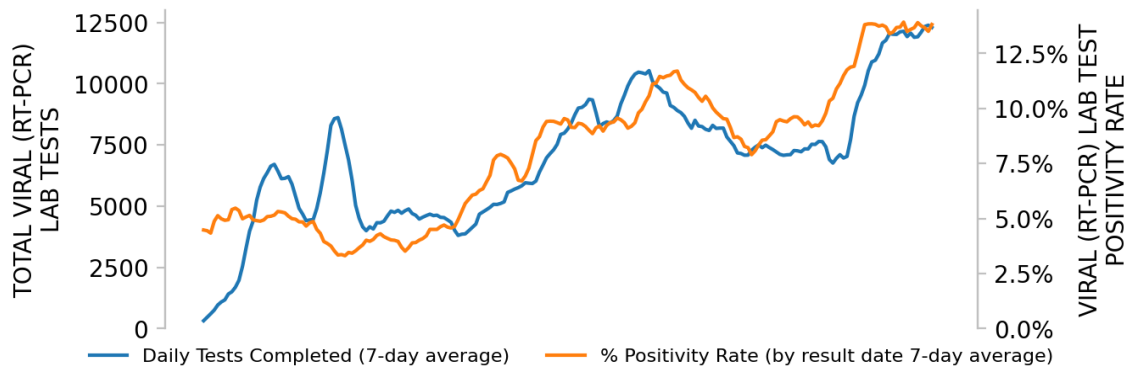
## UTAH

STATE REPORT | 10.11.2020

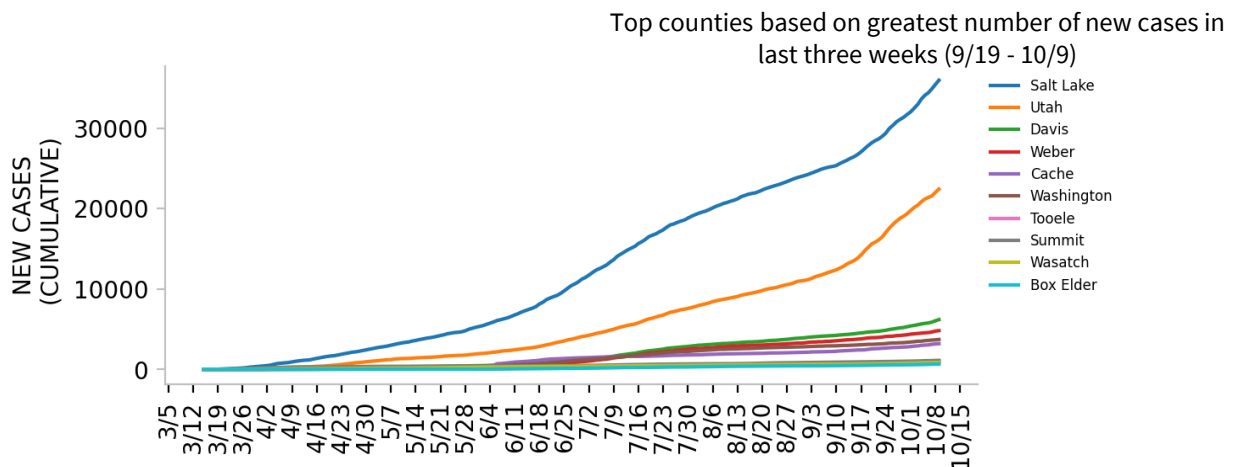
## NEW CASES



## TESTING



## TOP COUNTIES



## DATA SOURCES – Additional data details available under METHODS

**Note:** Some dates may have incomplete data due to delays in reporting. Data may be backfilled over time, resulting in week-to-week changes.

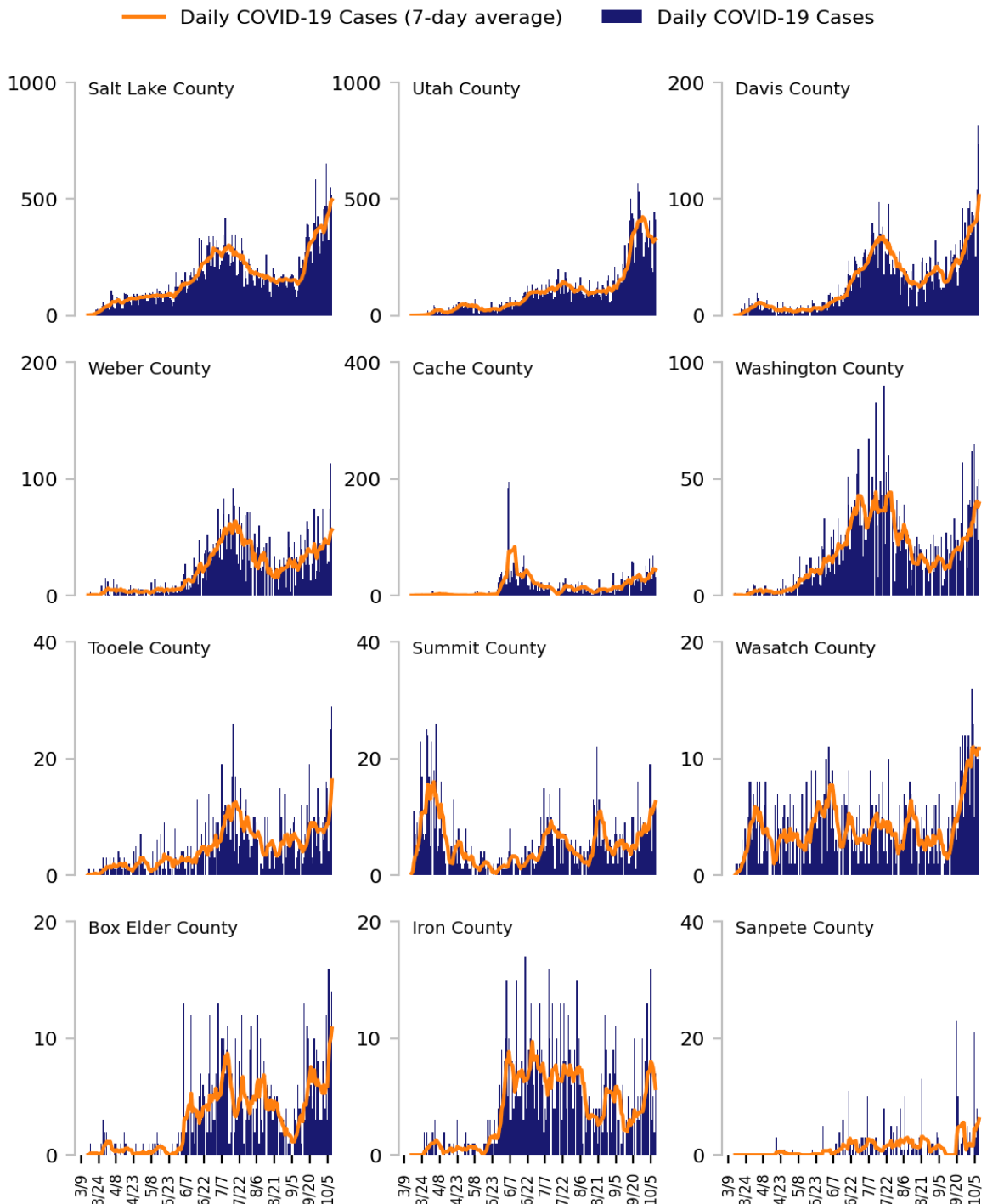
**Cases:** State values are calculated by aggregating county-level data from USAFacts; therefore, the values may not match those reported directly by the state. Data is through 10/9/2020.

**Testing:** CELR (COVID-19 Electronic Lab Reporting) state health department-reported data through 10/7/2020.



# Top 12 counties based on number of new cases in the last 3 weeks

TOTAL DAILY CASES



**DATA SOURCES** – Additional data details available under **METHODS**

**Cases:** State values are calculated by aggregating county-level data from USAFacts; therefore, the values may not match those reported directly by the state. Data is through 10/9/2020. Last 3 weeks is 9/19 - 10/9.

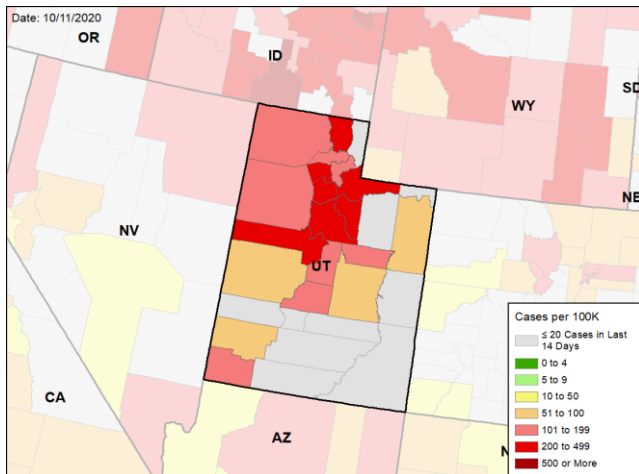


# UTAH

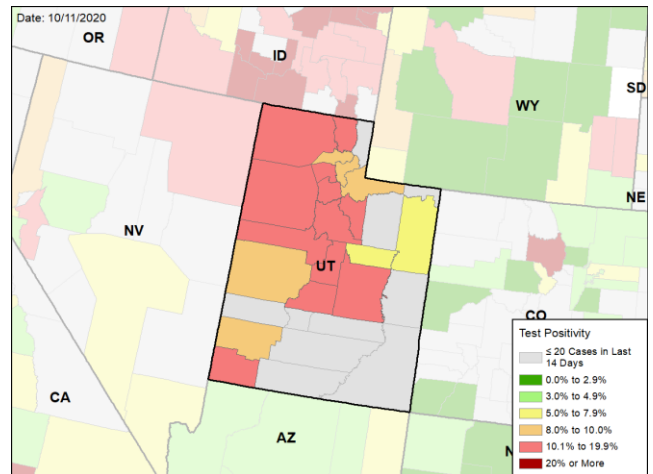
STATE REPORT | 10.11.2020

## CASE RATES AND VIRAL LAB TEST POSITIVITY DURING THE LAST WEEK

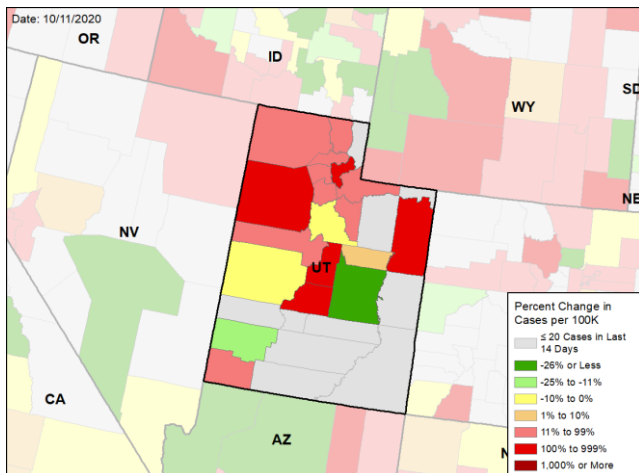
### NEW CASES PER 100,000 DURING THE LAST WEEK



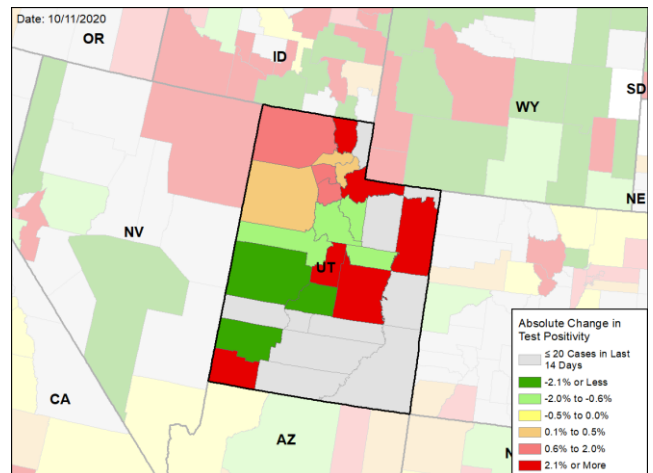
### VIRAL (RT-PCR) LABORATORY TEST POSITIVITY DURING THE LAST WEEK



### WEEKLY CHANGE IN NEW CASES PER 100,000



### WEEKLY CHANGE IN VIRAL (RT-PCR) LABORATORY TEST POSITIVITY



#### DATA SOURCES – Additional data details available under METHODS

**Note:** Some dates may have incomplete data due to delays in reporting. Data may be backfilled over time, resulting in week-to-week changes.

**Cases:** State values are calculated by aggregating county-level data from USAFacts; therefore, the values may not match those reported directly by the state. Data is through 10/9/2020. Last week is 10/3 - 10/9, previous week is 9/26 - 10/2.

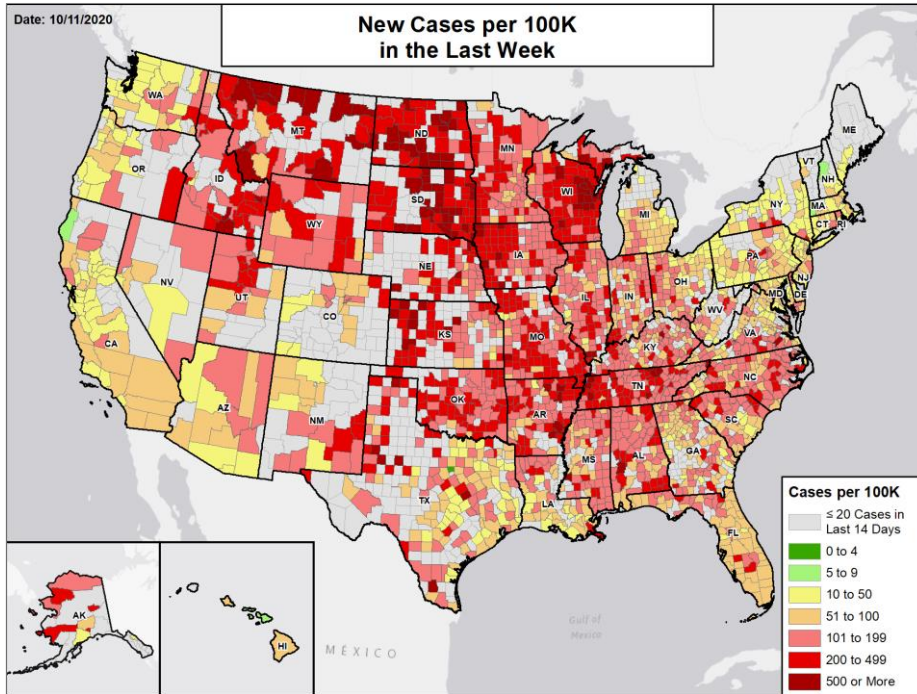
**Testing:** CELR (COVID-19 Electronic Lab Reporting) state health department-reported data through 10/7/2020. Last week is 10/1 - 10/7, previous week is 9/24 - 9/30.





# National Picture

## NEW CASES PER 100,000 LAST WEEK

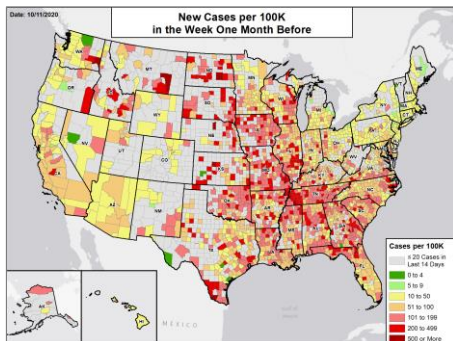


## NATIONAL RANKING OF NEW CASES PER 100,000 LAST WEEK

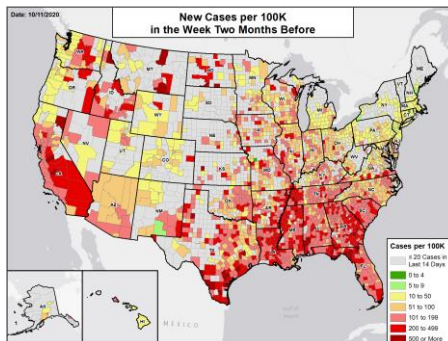
National Rank	State	National Rank	State
1	ND	27	TX
2	SD	28	DE
3	MT	29	CO
4	WI	30	VA
5	UT	31	FL
6	ID	32	OH
7	IA	33	GA
8	WY	34	MI
9	OK	35	WV
10	TN	36	LA
11	AR	37	MD
12	KY	38	PA
13	KS	39	NJ
14	NE	40	MA
15	MO	41	DC
16	AK	42	AZ
17	MN	43	CA
18	MS	44	OR
19	AL	45	NY
20	IN	46	WA
21	SC	47	HI
22	IL	48	CT
23	NC	49	NH
24	RI	50	ME
25	NV	51	VT
26	NM		

## NEW CASES PER 100,000 IN THE WEEK:

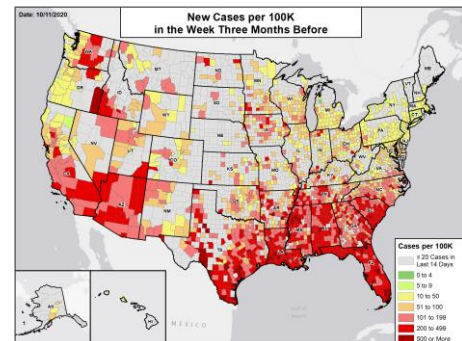
### ONE MONTH BEFORE



### TWO MONTHS BEFORE



### THREE MONTHS BEFORE



## DATA SOURCES

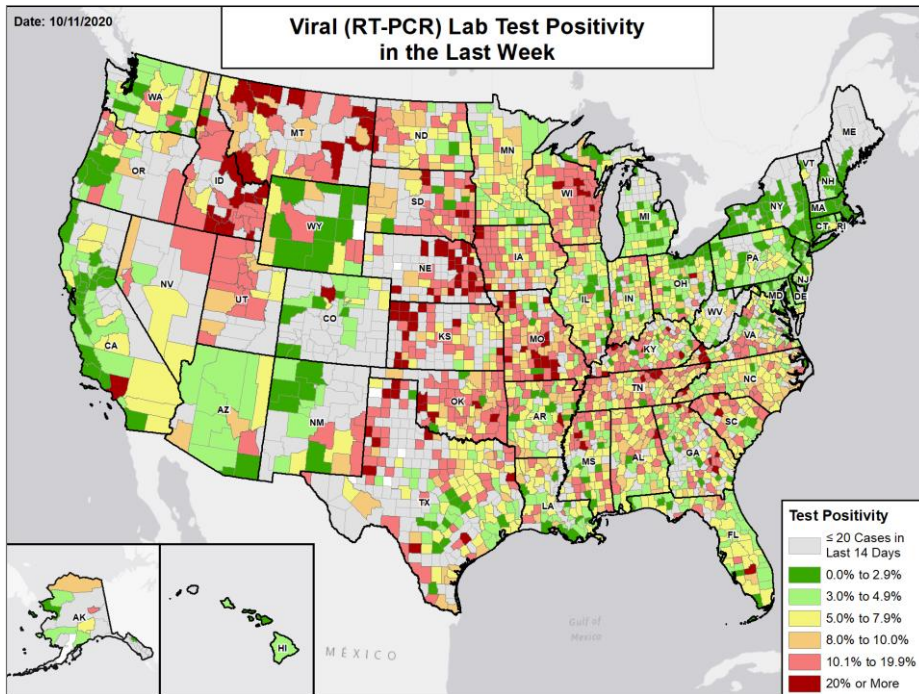
**Note:** Some dates may have incomplete data due to delays in reporting. Data may be backfilled over time, resulting in week-to-week changes.

**Cases:** County-level data from USAFacts through 10/9/2020. Last week is 10/3 - 10/9; the week one month before is 9/5 - 9/11; the week two months before is 8/8 - 8/14; the week three months before is 7/11 - 7/17.



# National Picture

## VIRAL (RT-PCR) LAB TEST POSITIVITY LAST WEEK

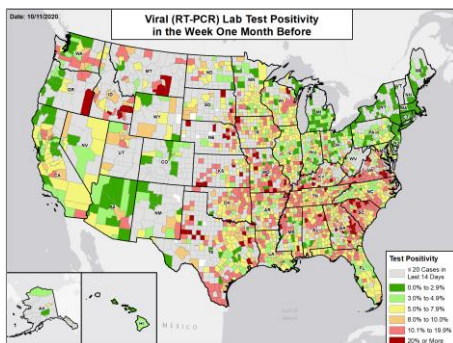


## NATIONAL RANKING OF TEST POSITIVITY LAST WEEK

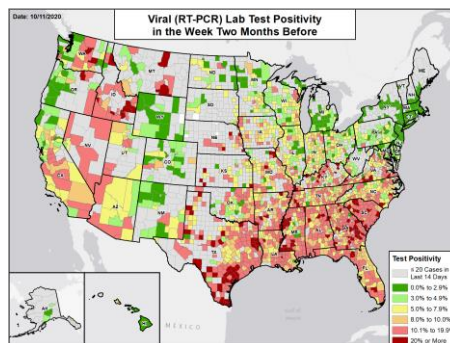
National Rank	State	National Rank	State
1	NE	27	MN
2	MT	28	FL
3	ID	29	IL
4	UT	30	NM
5	CA	31	LA
6	SD	32	AZ
7	WI	33	WY
8	OK	34	WV
9	OR	35	PA
10	MO	36	MD
11	IA	37	CO
12	KY	38	MI
13	KS	39	HI
14	SC	40	OH
15	NV	41	WA
16	ND	42	NJ
17	MS	43	DE
18	TN	44	CT
19	AL	45	NH
20	AR	46	RI
21	TX	47	NY
22	IN	48	DC
23	NC	49	MA
24	AK	50	ME
25	VA	51	VT
26	GA		

## VIRAL (RT-PCR) LAB TEST POSITIVITY IN THE WEEK:

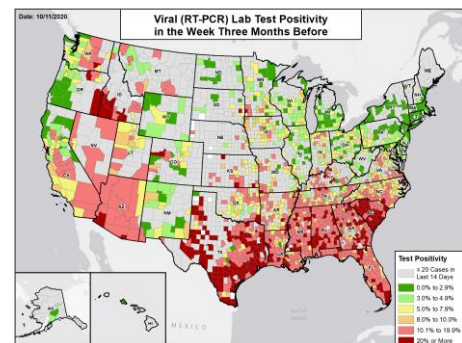
### ONE MONTH BEFORE



### TWO MONTHS BEFORE



### THREE MONTHS BEFORE



## DATA SOURCES

**Note:** Some dates may have incomplete data due to delays in reporting. Data may be backfilled over time, resulting in week-to-week changes.

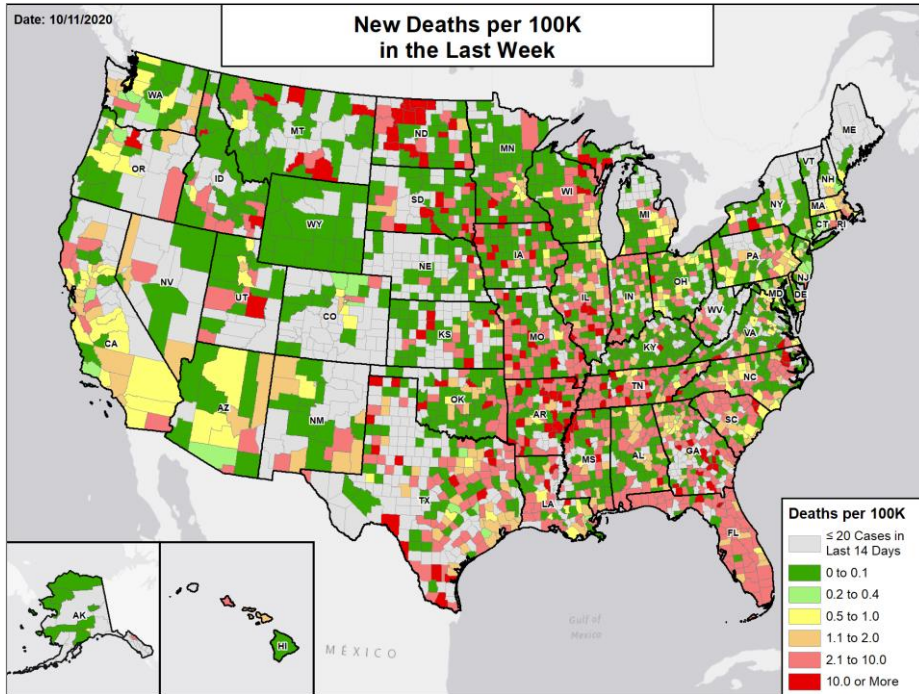
**Testing:** Combination of CELR (COVID-19 Electronic Lab Reporting) state health department-reported data and HHS Protect laboratory data (provided directly to Federal Government from public health labs, hospital labs, and commercial labs) through 10/7/2020. Last week is 10/1 - 10/7; the week one month before is 9/3 - 9/9; the week two months before is 8/6 - 8/12; the week three months before is 7/9 - 7/15.





# National Picture

## NEW DEATHS PER 100,000 LAST WEEK

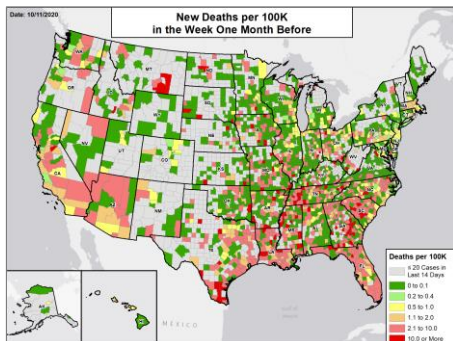


## NATIONAL RANKING OF NEW DEATHS PER 100,000 LAST WEEK

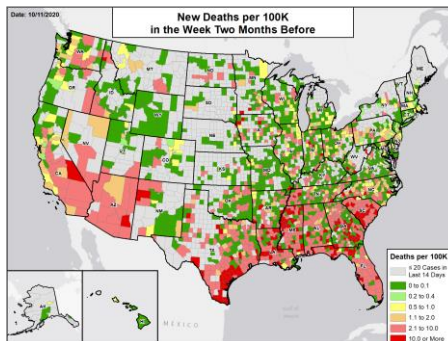
National Rank	State	National Rank	State
1	ND	27	RI
2	AR	28	MN
3	SD	29	CA
4	MO	30	UT
5	TN	31	PA
6	FL	32	NE
7	MS	33	KY
8	SC	34	MI
9	GA	35	DE
10	KS	36	OR
11	AL	37	CO
12	IA	38	OH
13	TX	39	AZ
14	LA	40	NM
15	MT	41	DC
16	ID	42	NH
17	HI	43	WA
18	IL	44	MD
19	IN	45	CT
20	NV	46	NY
21	WI	47	AK
22	NC	48	NJ
23	MA	49	ME
24	OK	50	VT
25	WV	51	WY
26	VA		

## NEW DEATHS PER 100,000 IN THE WEEK:

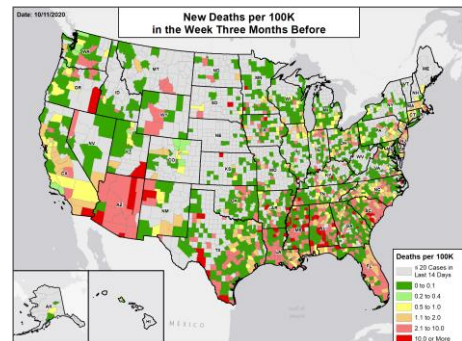
### ONE MONTH BEFORE



### TWO MONTHS BEFORE



### THREE MONTHS BEFORE



## DATA SOURCES

**Note:** Some dates may have incomplete data due to delays in reporting. Data may be backfilled over time, resulting in week-to-week changes.

**Deaths:** County-level data from USAFacts through 10/9/2020. Last week is 10/3 - 10/9; the week one month before is 9/5 - 9/11; the week two months before is 8/8 - 8/14; the week three months before is 7/11 - 7/17.



# METHODS

## STATE REPORT | 10.11.2020

**COLOR THRESHOLDS:** Results for each indicator should be taken in context of the findings for related indicators (e.g., changes in case incidence and testing volume). Values are rounded before color classification.

Metric	Dark Green	Light Green	Yellow	Orange	Red
New cases per 100,000 population per week	≤4	5 – 9	10 – 50	51 – 100	≥101
Percent change in new cases per 100,000 population	≤-26%	-25% – -11%	-10% – 0%	1% – 10%	≥11%
Diagnostic test result positivity rate	≤2.9%	3.0% – 4.9%	5.0% – 7.9%	8.0% – 10.0%	≥10.1%
Change in test positivity	≤-2.1%	-2.0% – -0.6%	-0.5% – 0.0%	0.1% – 0.5%	≥0.6%
Total diagnostic tests resulted per 100,000 population per week	≥2001	1001 – 2000	750 – 1000	500 – 749	≤499
Percent change in tests per 100,000 population	≥26%	11% – 25%	1% – 10%	-10% – 0%	≤-11%
COVID-19 deaths per 100,000 population per week	≤0.1	0.2 – 0.4	0.5 – 1.0	1.1 – 2.0	≥2.1
Percent change in deaths per 100,000 population	≤-26%	-25% – -11%	-10% – 0%	1% – 10%	≥11%
Skilled Nursing Facilities with at least one resident COVID-19 case, death	0%		1% – 5%		≥6%
Change in SNFs with at least one resident COVID-19 case, death	≤-2%		-1% – 1%		≥2%

### DATA NOTES

- Some dates may have incomplete data due to delays in reporting. Data may be backfilled over time, resulting in week-to-week changes. It is critical that states provide as up-to-date data as possible.
- Cases and deaths:** County-level data from USAFacts as of 17:35 EDT on 10/11/2020. State values are calculated by aggregating county-level data from USAFacts; therefore, values may not match those reported directly by the state. Data are reviewed on a daily basis against internal and verified external sources and, if needed, adjusted. Last week data are from 10/3 to 10/9; previous week data are from 9/26 to 10/2; the week one month before data are from 9/5 to 9/11.
- Testing:** The data presented represent viral COVID-19 laboratory diagnostic and screening test (reverse transcription polymerase chain reaction, RT-PCR) results—not individual people—and exclude antibody and antigen tests, unless stated otherwise. CELR (COVID-19 Electronic Lab Reporting) state health department-reported data are used to describe county-level viral COVID-19 laboratory test (RT-PCR) result totals when information is available on patients' county of residence or healthcare providers' practice location. HHS Protect laboratory data (provided directly to Federal Government from public health labs, hospital labs, and commercial labs) are used otherwise. Some states did not report on certain days, which may affect the total number of tests resulted and positivity rate values. Because the data are deidentified, total viral (RT-PCR) laboratory tests are the number of tests performed, not the number of individuals tested. Viral (RT-PCR) laboratory test positivity rate is the number of positive tests divided by the number of tests performed and resulted. Resulted tests are assigned to a timeframe based on this hierarchy of test-related dates: 1. test date; 2. result date; 3. specimen received date; 4. specimen collection date. Resulted tests are assigned to a county based on a hierarchy of test-related locations: 1. patient residency; 2. provider facility location; 3. ordering facility location; 4. performing organization location. States may calculate test positivity other using other methods. Last week data are from 10/1 to 10/7; previous week data are from 9/24 to 9/30; the week one month before data are from 9/3 to 9/9. HHS Protect data is recent as of 13:41 EDT on 10/11/2020. Testing data are inclusive of everything received and processed by the CELR system as of 19:00 EDT on 10/10/2020.
- Mobility:** Descartes Labs. These data depict the median distance moved across a collection of mobile devices to estimate the level of human mobility within a locality. The 100% represents the baseline mobility level prior to the pandemic; lower percent mobility indicates less population movement. Data is anonymized and provided at the locality level. Data is recent as of 17:33 EDT on 10/11/2020 and is through 10/7/2020.
- Hospitalizations:** Unified hospitalization dataset in HHS Protect. This figure may differ from state data due to differences in hospital lists and reporting between federal and state systems. These data exclude psychiatric, rehabilitation, and religious non-medical hospitals. In addition, hospitals explicitly identified by states/regions as those from which we should not expect reports were excluded from the percent reporting figure. The data presented represents raw data provided; we are working diligently with state liaisons to improve reporting consistency. Data is recent as of 18:19 EDT on 10/11/2020.
- Skilled Nursing Facilities:** National Healthcare Safety Network (NHSN). Data report resident and staff cases independently. Quality checks are performed on data submitted to the NHSN. Data that fail these quality checks or appear inconsistent with surveillance protocols may be excluded from analyses. Data presented in this report are more recent than data publicly posted by CMS. Last week is 9/28-10/4, previous week is 9/21-9/27.
- County and Metro Area Color Categorizations**
  - Red Zone:** Those core-based statistical areas (CBSAs) and counties that during the last week reported both new cases at or above 101 per 100,000 population, and a lab test positivity result at or above 10.1%.
  - Orange Zone:** Those CBSAs and counties that during the last week reported both new cases between 51–100 per 100,000 population, and a lab test positivity result between 8.0–10.0%, or one of those two conditions and one condition qualifying as being in the “Red Zone.”
  - Yellow Zone:** Those CBSAs and counties that during the last week reported both new cases between 10–50 per 100,000 population, and a lab test positivity result between 5.0–7.9%, or one of those two conditions and one condition qualifying as being in the “Orange Zone” or “Red Zone.”