

Professional Law Enforcement Equipment Supplier

MILIPOL

PARIS 2009

Booth No. 13F109

**Second section: Covert Surveillance & Security Defense**

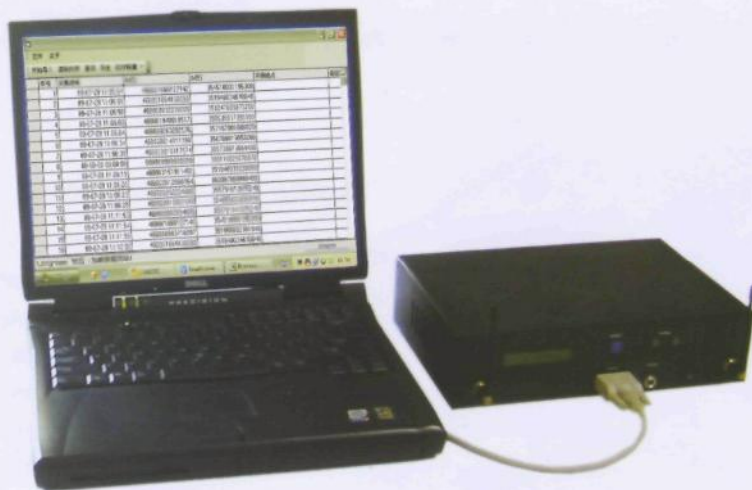


**Beijing LongHope Police Equipment Co., Ltd.**

**[www.lhpolitech.com](http://www.lhpolitech.com)**

# LongHope

## PoliEye® GSMIF GSM Mobile Phone ID Finder



GSMIF is a portable mobile phone number detection equipment, which is designed for public security and law enforcement departments. Based on GSM Technology, it can intercept SIM IMSI number and handset IMEI number within the radius of 100 meters without detection of the target onsite and store the numbers and the date into the system simultaneously. It features portability and small

in size, and can be concealed in a bag for mobile tracking application. For specific suspect target, it can obtain the SIM IMSI number and handset IMEI number accurately and quickly. Provide necessary conditions for analysis and control of the criminal network and an effective breakthrough for surveillance, arrest and clue analysis especially in drug control and anti-terrorism cases.

### Features:

- Identification of the IMEI of the suspect
- Without contact to suspect handset
- Small in size, easy to conceal, mobile application
- Full compatibility with all GSM networks worldwide
- For anti-terrorism cases

### Specifications:

- Effective range:
  - standard: 100m (max radius)
  - optional: 200m(max radius)
- Operation temperature: -30°C ~50°C
- Data interface: COM
- Operation frequency:
  - GSM 900&1800MHz: operational over 200 countries
  - GSM 800&1900MHz: North and South America
- Operation voltage: 12V
- Battery operation: 3 hours
- Dimension: 290x195x80mm
- Weight: 2.8kg



## PoliEye® GSMAF GSM Air Fence & Shield

GSMAF is a mobile phone air fence evidence collection system based on GSM Technology. It features portability and small in size, suitable for urban city temporary and permanent deployment, and can change the location according to the situation.

It can intercept SIM IMSI number and handset IMEI number within the adjustable radius of 500 meters, and store the information of date and location into the system simultaneously.

GSMAF is small in size and easy to conceal, and applicable for positioning in the urban area such as streets, highway toll stations, the important checkpoint of railway station, bank, national treasury, prison, museum,

power station (Including nuclear power station), military authorities, oil field and major project site etc. It can be deployed as a wireless electronic fence, collect the evidence covertly without contact to the suspect target handset.

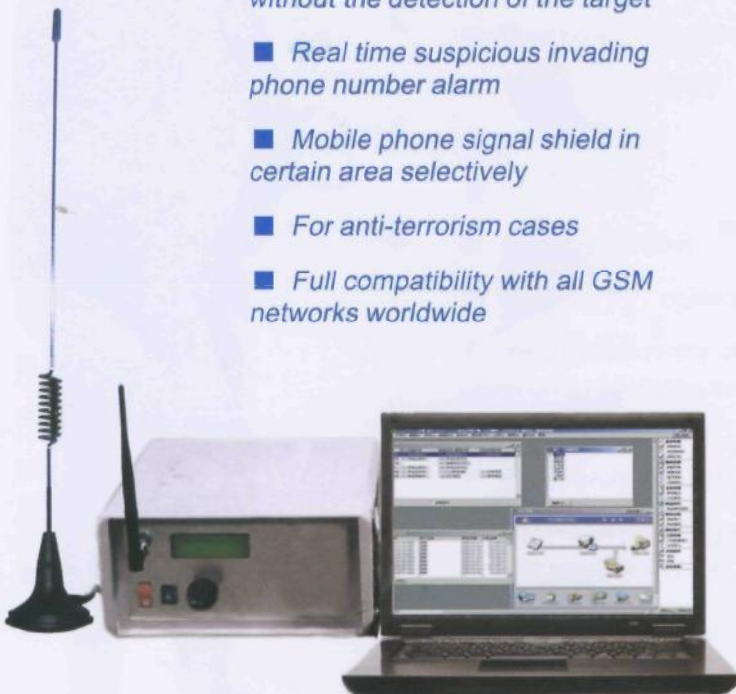
The following functions can be realized through the central control: suspicious invading phone number alarm, mobile phone signal shield in certain area selectively, data information search and comparison. Providing powerful support for surveillance, criminal activity rates reduction and shrinking surveillance scope especially in anti-terrorism cases. Further more, it also offers us a new method and tool to search the suspect target through road deployment.

### Features:

- Covert GSM handset air fence
- IMSI and IMEI interception without the detection of the target
- Real time suspicious invading phone number alarm
- Mobile phone signal shield in certain area selectively
- For anti-terrorism cases
- Full compatibility with all GSM networks worldwide

### Specifications

- ★ Effective range:
  - standard: 500m(Max radius)
  - optional: 1km(Max radius)
- ★ Operation temperature: -30℃~50℃
- ★ Operation frequency:
  - GSM 900 & 1800MHz: operational over 200 countries
  - GSM 800 & 1900MHz: North and South America
- ★ Operation voltage: 12V
- ★ Battery operation: 3 hours
- ★ Dimension: 35mm×25mm×18mm
- ★ Weight: 4.9kg



## PoliEar®

### Covert Digital Wireless Earpiece



#### Feature List

- Earpiece  
Small size, light weight, easy to conceal  
Comfortable for wearing with an anatomic design  
Noise cancellation and automatic gain control  
Use of environment friendly material
- Wireless PTT  
NFMI technology  
(NFMI means Near Field Magnetic Induction)  
Volume plus/minus  
Pairing function  
Battery level low indication
- Dual power supply for receiver
- Compatible to most of radios

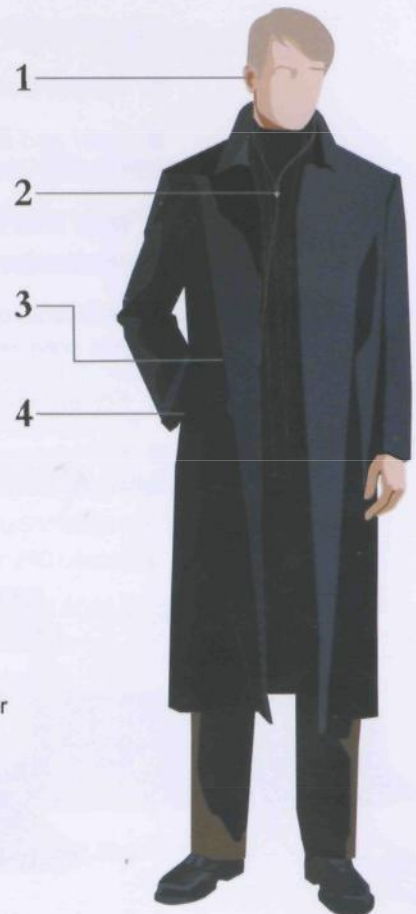
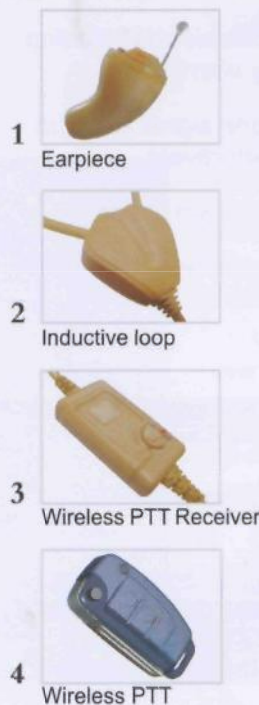
#### Application

This product can be widely used for people who rely on this type of equipment to fulfill their tasks, typically for

- Police and military covert communication
- Anti-terrorist
- Public security
- TV presenters
- Detective

#### Technical Specification

- 3V Chip Batteries
- Operation temperature range -40 to 70 °C (TBD)
- Wireless PTT operation range 50cm to 120cm
- For wireless PTT  
Average working current <6mA  
Stand by Current <200uA
- Water & dust proof for remote controller
- Microphone Impedance 4.4kΩ
- Microphone sensitivity 1V/ubo -32.0dB(+3dB)
- Earpiece max. audio output@3KHz 110dB
- Earpiece size 5×10×15mm
- FCC/CE/IC RoHS conformity



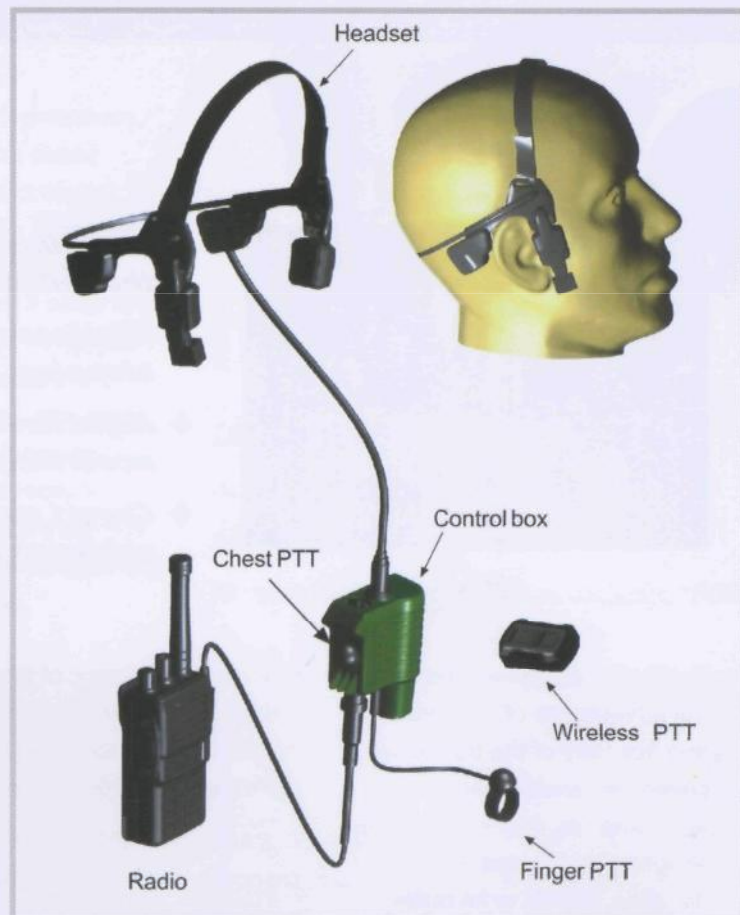
## PoliEar®

### Tactical Bone Conduction Headset



#### System

- Headset
- Control Box
- Wireless PTT
- Optional finger PTT
- Cable connect to external radio



#### Application

Tactical bone conduction headset is specially developed for government departments. It has powerful function and it is compatible with most of radios. It is suitable for many applications such as:

- Military
- Police
- Special force
- Anti-terrorist
- Public security
- Fire fighting
- Point constable.

#### Feature List

- Dual power supply for adapter
- Optional wired PTT
- Wireless PTT
- VOX function
- Battery Low alert
- Wireless PTT pairing function
- High sound quality of communication in the harshest Environments
- Water proof (IP67)
- Wear comfortably and not easy to produce fatigue

#### Technical Specification

- Operation temperature range: -40°C to 70°C (TBD)
- Operation time: >50 hours
- Stand by time: >180 hours
- Battery: 3.7V Lithium Ion rechargeable
- Aluminum-alloy house for controller box
- Range for wireless PTT: 60cm to 150cm
- Microphone sensitivity: -39dB (re 1V/1g, 1kHz)
- MIL-STD-810F conformity
- FCC/IC conformity
- CE conformity

# LongHope

## PoliEye® GA2006 Long Distance Monitoring Remote Control Covert Evidence Collection Kit



60M



- ◆ Real time wireless monitoring, ensuring the reliability of the evidence
- ◆ Wireless remote control of the recording, stopping, shooting and zooming
- ◆ Adjustment of the recording image according to the situation
- ◆ Covert surveillance, monitoring and evidence collection

PoliEye® GA2006 combines the advantages of concealment and flexibility of the traditional covert evidence collection kit, and remedies the defect of not shooting clear video at long distance, thanks to its built-in lens of 2.5-80mm and the optical zoom of 32X.

The facial feature of human being can be clearly identified

beyond the distance of 60 meters. The vehicle license plate number can be observed within the distance of 100 meters.

It is equipped with mobile phone monitoring adjustable remote controller, its functions include: real time image display on the LCD of the handset, adjustment of the recording image according to the situation, remote control of

the recording, stopping, shooting and zooming.

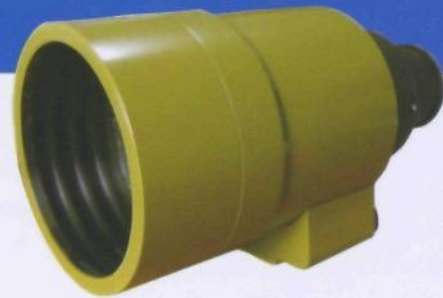
PoliEye®GA2006 is supplied with disguised bag for covert surveillance. Therefore, it is the ideal covert evidence collection equipment for public security law enforcement departments.

- Focal length: 2.5 - 80mm, F1.8-F4.5
- Storage space: 30GB, HDD
- Video resolution: 720×480/9Mbps
- Image resolution: 1152×864
- Operation time: 3 hours
- Remote control distance: 5m

## PoliEye® SENS-G3 6X Night Vision Recoder

SENS-G3 6x monocular low-light-level night vision scope (hereafter referred to as simple night vision scope) is a portable passive night vision scope, it can be held by hand or supported on a tripod for observation, suitable for surveillance, evidence collection and photography in low light environment at night (such as starlight, moonlight and airglow)

by military departments, armed police, public security and customs.. It adopts a 6x refractive/reflective optical lens, which makes it small in size and light in weight. It provides a distinct image without chromatic aberration. It can be connected directly to a camera or video camera by the mount for shooting or evidencing.



*Operation condition: Starlight*

*Diameter of Objective Lens: Ø107mm*

*Aperture Ratio: F1.4*

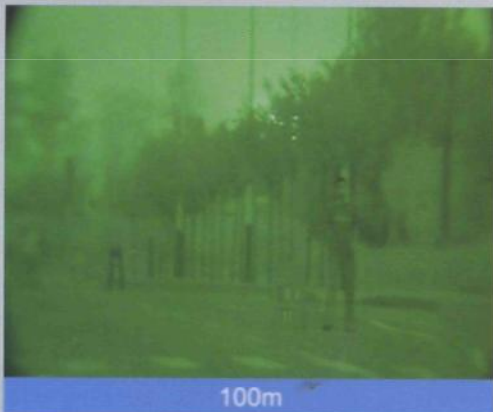
*Magnification: 6x*

*Human Beings Observation distance: 500m*

Observe at the illumination of 0.001Lux



50m



100m

Model of Image Intensifier	DNT-6
SNR at 108 lux	25:1
Limiting Resolution	64 Lp/mm
Luminance Dynamic Range	1.0E-06 lux
Gain at 2.0E-05 lux	30.000/π Cd/m <sup>2</sup> /lx
Maximum Output Brightness	2 Cd/m <sup>2</sup>
Diameter of Objective Lens	Ø107mm
Aperture Ratio	F1.4
Magnification	6x
Focal Length	150mm
Eyepiece Diopter Adjustment	+2~-6diopter
Operating Voltage	3V DC
Operating time	Approx. 120 h (20°C)
Service Life	15000h



# PoliEye® GAB0621

## Portable Infrared Laser Night Vision Scope

GAB0621 is supplied with both an AC-power supply for continuous operation, and a DC-power pack capable of 3.5 hours of continuous use. As equipped with day & night functional IR-CCD camera and high power IR-laser illuminator, it ensures observation during daytime and in total darkness. The activity of the human can be observed beyond the distance of 1.5km during daytime; the maximum

observation distance of the human is 600 meters in total darkness.

GAB0621 features long distance surveillance, without any effect in lighting condition and concealment. Its performance is superior to traditional low-light-level night vision scopes. Therefore, it is the ideal equipment for public security, judiciary and other law enforcement departments.



### Specifications:

- ★ Infrared wavelength: 980nm (Invisible)
- ★ Output Power: Standard 6 Watts  
Optional 8 Watts
- ★ Focal length: 10mm--210mm
- ★ Aperture range: F1.6--360
- ★ Horizontal resolution: 570 lines
- ★ Recording resolution: standard: 640×480 25fps  
Optional: 1280×960, 25fps
- ★ Storage mode: hard disk (60GB)
- ★ LCD control screen: 3.5 inch
- ★ Dimension of the main unit: 30×18×14cm
- ★ Weight: 6kg
- ★ Power supply: 12V
- ★ Operation time: 3.5 hours
- ★ Video recording mode: automatic, manual, motion detecting, pre-setting



Total Darkness 200M

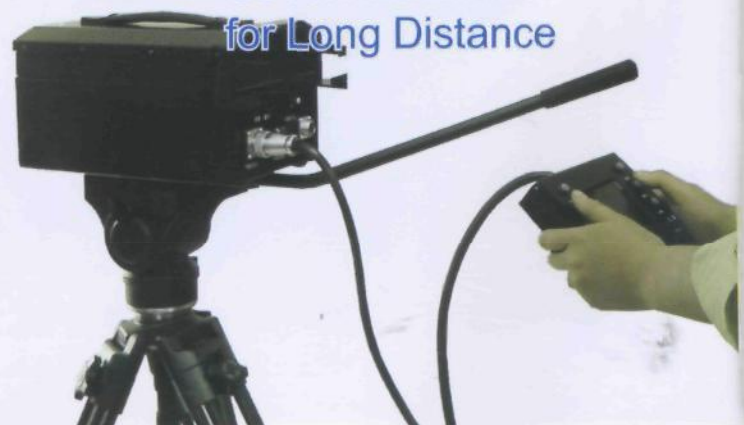


Total Darkness 400M



Total Darkness 600M

Covert Illuminator  
for Long Distance





# PoliEye® GAB1053

## Portable Day and Night Monitor

The GAB1053 is a portable medium and long distance IR-Laser night vision scope. It is equipped with day & night functional IR-CCD camera and IR-laser illuminator of 10W, suitable for observation and evidence collection during daytime and in total darkness. The maximum observation distance of the human target is 1000 meters in total darkness. The activity of the human target can be observed beyond the distance of 2.5km during daytime

The performance of GAB1053 is superior to traditional low-light-level night vision scopes. Therefore, it is the ideal equipment for public security, judiciary and other law enforcement departments.

We can supply wide range of series according to your requirements for longer distance observation.

### Covert Illuminator for Long Distance



- ★ Infrared wavelength: 980nm (Invisible)
- ★ Output Power: Standard 10 Watts  
Optional 16 Watts
- ★ Focal length: 18mm – 530mm
- ★ Storage mode: hard disk (60GB)
- ★ Recording resolution: standard: 640×480 25fps  
Optional: 1280×960 25fps
- ★ Power supply: AC220V±10%
- ★ Video recording mode: automatic, manual, motion detecting, pre-setting



Total Darkness 300M



Total Darkness 400M



Total Darkness 500M



Total Darkness 600M



Total Darkness 800M



Total Darkness 1000M

# LongHope

## PoliEye® GAB0413 Handheld Infrared Laser Night Vision Scope



### Covert Illuminator for Long Distance



GAB0413 is a hand-held IR-Laser night vision scope. It has a built-in video recorder and features portability and simple operation.

It is equipped with day & night functional IR-CCD camera and IR-laser illuminator of 4W, suitable for observation and evidence collection during daytime and in total darkness. The maximum observation

distance of the human target is 450 meters in total darkness.

The performance of GAB0413 is superior to traditional low-light-level night vision scopes. Therefore, it is the ideal equipment for public security, judiciary and other law enforcement departments.

Infrared wavelength	980nm (Invisible)
Output Power	4 Watts
Focal length	4mm--130mm
Recording resolution	640×480 25fps/sec
Horizontal resolution	570 lines
LCD control screen	3.5 inch
Battery operation	2 hours
Video recording mode	automatic, manual, motion detecting, pre-setting

## PoliEye® LH400 Leakage Cable Perimeter Underground Fence

***LH400 can be embedded underground, detect and accurate locate the invader and raise the alarm under covert condition. It is widely used in bank, national treasury, residential areas, prison, warehouse, museum, power station (Including nuclear power station), military authorities, oil field and major project site, etc.***



### Specifications

Dimension: 310mm×285mm×45mm  
Operation frequency: VHF  
Detection target: the activity of human beings and vehicles  
Detection range: 0.7~1.5m  
Positioning accuracy: 20m  
Cable embedding method: double cable embedding, embedding depth (5~20cm)  
Alarm output: RS485 data bus  
Operation voltage and power consumption: AC220V, ≤30W  
Environmental adaptability: waterproof  
Operation temperature:  
-20~+60°C (type A)  
-40~+60°C (type B)  
Detection function: self examination through RS485, accuracy adjustment

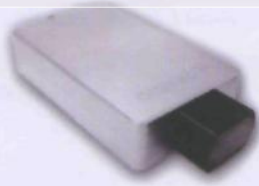
### Features

- Detection distance:  
standard: 400m(one main unit)  
optional: longer distance(more main unit)
- Accurate locate the invader within the distance of 400m, positioning accuracy is 20m
- Embed underground for covert detection
- High detective efficiency, the alarm accuracy is not affected by the bad weather and the animals;
- Continuous automatic detection without maintenance
- Self-examination, display the accuracy status



# PoliEar® LHAS

## Long Distance Audio Surveillance Device



### High Sensitivity & Definition

The monitoring range and distance is 45 degree angle and 30 meters respectively. It adopts two complementary high sensitive microphone, which can ensure wider pick-up band and diapason. One microphone is to monitor narrow angle sound source from long distance, the other is for wide angle sound source.

### Water & Moisture Proof:

Suitable for permanent outdoor application

### Noise Reduction

It adopts the new generation voice noise reduction technology of Clear Speech I, which can reduce the noise level of above 20db.



Effective monitoring range	0--30 meters (80dB)
Directional property	45 degree
Sensitivity	-38dB
Signal-to-noise ratio	>40dB(Outdoor), >70dB(Indoor)
Dynamic range	90db (1KHz at Max db SPL)
Audio cable length	3000 meters
Frequency response	20Hz--20kHz

Beijing LongHope Police Equipment Co., Ltd. has been developing, manufacturing and selling hi-tech antiterrorist, forensic science and law enforcement products since 1995 and is authorized for the sale of these products made by well-

known manufacturers in European and American countries. With law enforcement departments, the company co-developed a variety of state-of-the-art equipment. These products are exported to USA, Spain, Russia, etc.



### Beijing LongHope Police Equipment Co., Ltd.

Suite B202, Zizhu Garden, 88 Zizhuyuan Road,  
Haidian District, Beijing, 100089 China

E-mail: [info@lhpolitech.com](mailto:info@lhpolitech.com)

Ph: +86 10 88552506/7/8/9

Fax: +86 10 68427625

For More Products in Details, Please Visit [www.lhpolitech.com](http://www.lhpolitech.com)