

MCR TRACER



MCR TRACER has been developed by AREA to satisfy the upcoming need of LEAs to track targets movements by means of GPS and GPRS Systems. MCR Tracer full integration in the MCR Voice & Data Monitoring- Center enables LEA operators to leverage the power of an unified interface for all the information (Voice, Data, Positioning) related to the target.

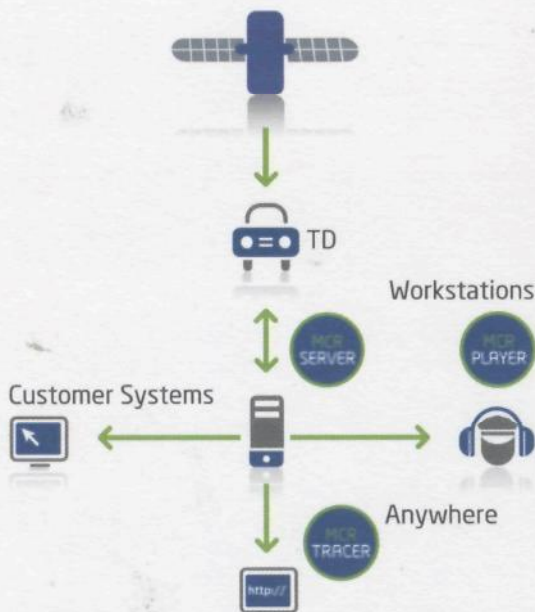
GEOGRAPHICAL TRACKING OF TARGETS: A TACTICAL TOOL

The geographical localization of monitored targets is nowadays one of the most important tools in investigation activities.

AREA has developed in house a solution to pinpoint someone's position down to 10 meters using devices so small to fit in the palm of one hand. MCR Tracer is made up of:

- The Tracking Device (TD) providing localization data
- The Remote Control Management (RCM) which receives, manages, stores and displays geographical data and related targets information.

The TDs are installed on vehicles or others moving Objects, allowing Law Enforcement Agencies to acquire relevant data concerning vehicles movements: history and real-time monitoring, date and time of all movements, average speed, real-time localization on maps, etc.



TRACER ARCHITECTURE

The data captured by MCR Tracer are sent to a MCR System for centralized storage, registration and authentication.

The LEA operator can access these data using the following interfaces, even in parallel:

1. MCR Player Interface (Area Monitoring Center)

The full integration of Tracer with MCR Voice & Data Monitoring Center provides the best performances and efficiency, allowing LEA operators to use the same MCR Player interface for all kinds of monitoring activities: fixed and mobile telephony and IP data interceptions, localization tracking services, live audio and video, etc.

2. MCR Tracer Anywhere (Web User-Interface)

By means of a specific Web-based application, it is possible to render on maps of the geographical data belonging to the targets from any IP-enabled device (incl. Smartphones / iPhone) and without a complete monitoring center infrastructure.

3. Integration with specific Customer applications

AREA may provide the consulting support for the full integration with existing systems. Tracer is therefore highly scalable and flexible.

LOCALISATION AND TRANSMISSION TECHNOLOGIES

Tracer is based on a combined use of the two main localization network protocols (GPS and GSM) in order to grant the highest performances and reliability:

- GPS system offers the fastest targets localization, higher precision and continuous update of date, time and other basic tracking parameters
- GSM cell-based localization is less precise, but can exploit much wider network coverage and the network signal is not affected by weather or environmental factors.

Two different transmission modes are supported:

- GPRS
- SMS

Localization data are transmitted by default via GPRS. In case of missing GPRS signal, data are sent via SMS.

To grant the best GSM coverage and system availability, two SIM cards from different operators can be installed on board.

If both networks are unavailable, localization data are cached on the Tracer device and forwarded when the connection is re-established. Data are sent at configurable intervals.



REMOTE CONTROL

Complete remote control of the device is possible via mobile phone, MCR Player or MCR Tracer Anywhere using SMS or GPRS connectivity.

Remote firmware upgrade and configuration, with a wide range of customizable parameters. Separated Admin & User access and rules.

HIGH RELIABILITY, AVAILABILITY AND SECURITY

Each device is tested singularly under stress conditions (mechanical, temperature).

- Double SIM
- Optimized management of autonomy thanks to enhanced Hibernation and Auto-Switch-On policies
- Power supplied by means of battery pack or car battery

High precision in geographical data rendering with Map and Guide software / - NavTech maps



MCR TRACER Anywhere

MCR Tracer Anywhere is a simple, complete and intuitive solution for managing target vehicles monitored through MCR Tracer. The system supports both the analysis of stored data and the live tracking of the moving targets.

THE 'ANYWHERE' APPROACH

Thanks to a dedicated web server within the MCR infrastructure, access to data collected by MCR Tracer is granted from any device connected to the Internet and equipped with a standard browser: PC/Notebook from the office, Smartphone/iPhone from the field or from a remote location, etc.

A Virtual Private Network guarantees maximum flexibility and data access without compromises in terms of security.

MAPS

The integration between MCR Tracer Anywhere and the world's leading vendors of digital maps (Google, Microsoft) allows users to visualize the position of their targets in many different ways, such as:

- Google Maps with "Maps" view
- Google Maps with "Satellite" view
- Google Maps 'Street view'

- Microsoft Virtual Earth
- Microsoft Virtual Earth with satellite views
- Microsoft Virtual Earth with aerial photography

TARGETS VISUALIZATION

The rendering of targets positions can be fully customized through different parameters and according to the most suitable investigation approach. For example, the operator can choose to visualize:

- Single, defined GPS positions
- Complete travels
- Time periods and related movements
- Journeys within selected points

LIVE CHASING AND USE OF MULTIPLE TARGETS

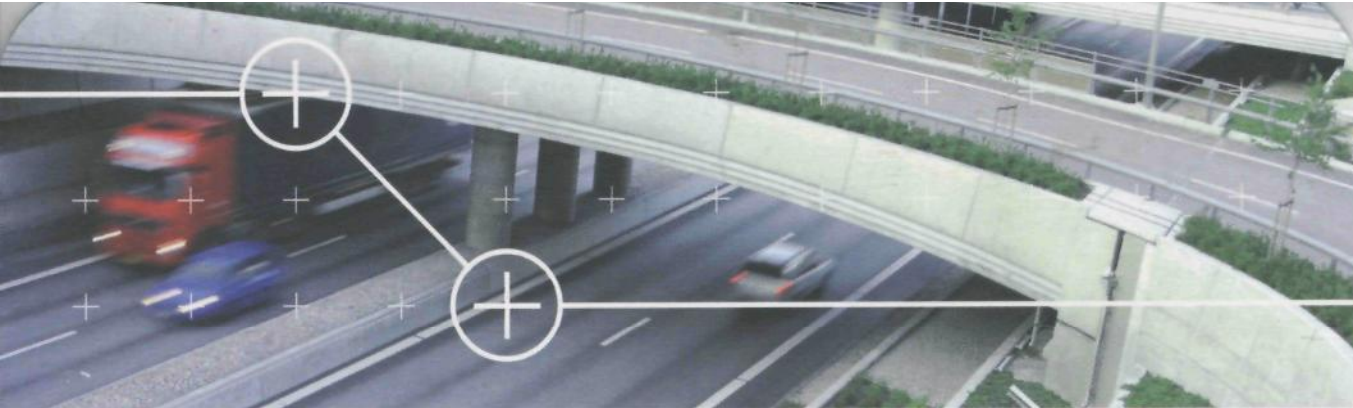
Chasing and pursuing targets is made easier thanks to the ability to track several targets at the same time.

Several available options allow operators to assign defined targets to dedicated visualization modes, according to investigators needs and operations scenarios.

Two maps can be open on the same screen, allowing the parallel view of separate targets. When targets are in the same geographical area, they will be shown on the same map, using different colors.



The great variety of possible visualizations guarantees the highest precision in pinpointing and monitoring the target movements.



CONFIGURATION

Thanks to MCR Tracer Anywhere, the tracking devices (Tracer) can be easily configured from remote.

Advanced features such as GSM users, alarm zones, real time chasing options, energy saving settings etc., can be activated or modified in a very easy and intuitive way.

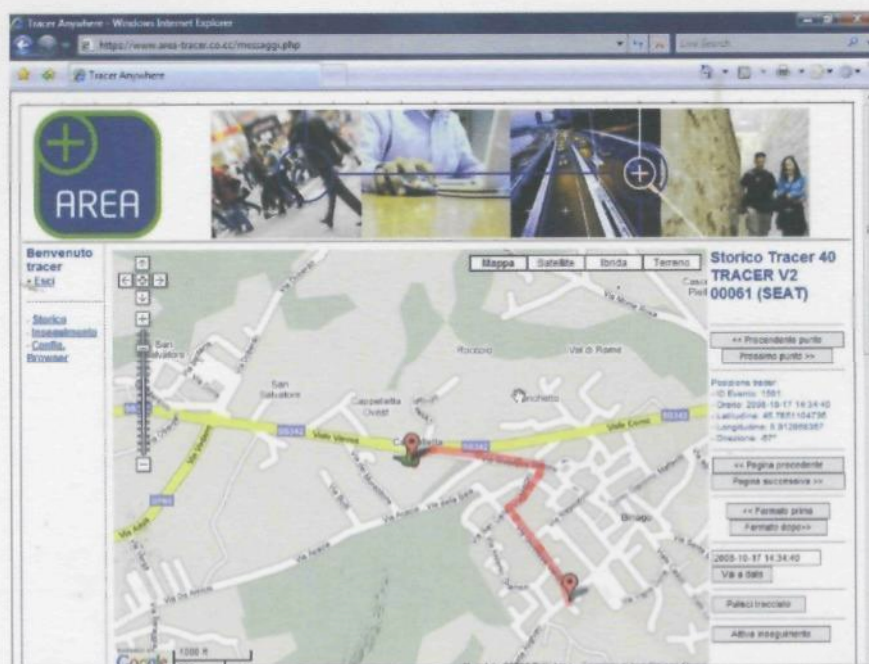
DATA VISUALIZATION

MCR Tracer Anywhere data can be rendered in a large spectrum of configurable resolutions (from 400x100 dpi up to 1400x1000 dpi), allowing LEAs to adopt different media to visualize targets, from the smallest, portable PocketPC to the widest flat screen.

INTEGRATION

MCR Tracer is completely integrated in the MCR Monitoring Center.

Now, thanks to Tracer Anywhere, it can be used as a standalone solution for security activities.



When targets are in the same geographical area, they will be shown on the same map, using different colors.