

TRACKING IS HIDDEN TECHNOLOGY

The Modular V3

Specialist kit for creating a custom built tracking device to fit in a variety of objects



Track from a variety of devices

Advanced GPS/GSM tracking unit:

The Modular V3 is the third generation in the Modular series and offers extended functionality to provide any operation. The kit contains all the tools to provide a quick set-up for custom made solutions.

Enclosures in Modular setup:

The physical size of the enclosures are developed to be minimal, so as to fit in small packages. The electronic parts of the unit are all securely hidden in ruggedized aluminium enclosures.

Inputs & Outputs

The MD-V3 has one input and one output. The output can be connected to various devices and triggers and can be controlled and activated remotely via the CP2 software.

Advanced Power management:

There are 6 different power modes available to reduce the unit's power consumption and take control of the operating time

Automatic alarms:

The MD-V3 is able to send out alarms on:

- Motion, active/passive.
- Geofence, in/out.
- Battery-capacity under 10%.
- The MD-V3 is being switched off.

External rechargeable batteries:

The Modular comes standard with 2 external batteries, operating time is at least 36 hours and up to 30 days in standby mode.

Optional extras:

- Larger / extra batteries for long term deployment.
- Hardwire cable 8-30V.



HIDDEN TECHNOLOGY
systems international ltd.

www.hiddentec.com



TECHNICAL

Specifications:

Enclosure:	Aluminium, Dim. 78x40x10mm.
External battery:	2x Lithium Ion 1200mAh, rechargeable.
GSM-system:	4-band for worldwide support.
Communication:	GPRS / SMS / DATA.
Reports of:	Quality of Long/Lat position and GSM signal strength.
Data-logging :	Long/Lat + GSM-Cell-ID (when GSM active).
Memory:	32.512 positions.
GPS-module:	High-sensitive, energy saving.
Energy-control:	6 Configurable power modes.
Geofencing:	16 Programmable geofences.
Movement-sensor:	G-force sensor, non mechanical.
Audio Capability:	2-Way audio communications.
Input / Output :	Input active when connected to ground Output is open drain max 30V.

Power management system

Power mode 1

GPS/GSM/GPRS, Always on	36 Hrs / 1.5 Days
GPRS, Off	50 Hrs / 2.0 Days

Power mode 2

GSM, Always on, GPS, Switched on movement	50 - 342 Hrs / 2.0 - 14.2 Days
GPRS, Also always on	36 - 92 Hrs / 1.5 - 3.8 Days

Power mode 3

GPS/GSM, Switched on movement	50 - 720 Hrs / 2 - 30 Days
GPRS, also switched on	36 - 720 Hrs / 1.5 - 30 Days

GPRS

Off / On / Switched on movement

Data-log mode (GSM on timer / GPS on motion)

8 Hours per day	5.4 Days
Idle	16 Days

Deep sleep mode

Ultra low power mode GPS/GSM Off / with wake up timer setting	1/2 Year
---	----------

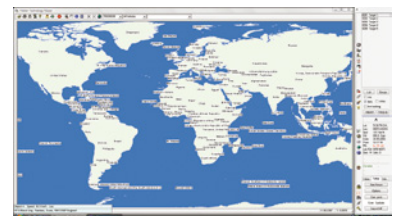
Items included:

- 1 Modular 3
- 1 GPS Antenna short
- 1 GPS Antenna long
- 1 GSM Antenna short
- 1 GSM Antenna long
- 2 Batteries
- 2 Battery cables short
- 1 Battery cables short
- 1 Emergency button
- 1 Set of connections
- 1 Emergency button
- 1 Set of connectors
- 1 Headset
- 1 Microphone
- 1 Diagnose box
- 1 Charger with UK & EU Plug
- 1 Pair of tweezers
- 1 USB cable
- 1 USB memory stick
- 1 Quick starting guide



Software*:

Configuration, monitoring, live tracking, alarm forwarding to cellphones, email and computers + more time saving automatic functionality via our user friendly software system CP-Server / CP2-Pro and CP-Mobiletrack



* power usage with 2 external batteries connected and at mediate GSM coverage

* Software not included

Hidden Technology Worldwide Offices

UK Office: Unit C5 Star Business Centre, Fairview Industrial Park, Marsh Way, Rainham, Essex RM13 8UP

European Office: Dolfijn 37A, Enkhuizen, 1601 ME, Holland, The Netherlands

USA Office: 3881 S. Nova Road, Port Orange, FL 32144 USA

Middle East Office: Office No 4, Building 8542, Aldairi Alshamali Road, Cross Prince Turki 1st Street, P.O. Box 61290 Riyadh 11565

T: +44(0)1708 631 333 • info@hiddentec.com

T: +31(0)228 312 498 • europe@hiddentec.com

Tel: +1 386 760 1480 • usa@hiddentec.com

T: +966 1207 7773 • saudi@hiddentec.com