

TRACKING IS HIDDEN TECHNOLOGY

The Modular XT

The MD- XT is specially developed for long term, covert deployment



Optional Extras

- Tamper Alarm
- External Powerpack



Track from a variety of devices

Small, ruggedized and robust enclosure: IP-67 level (98x46x22mm)

The MD-XT's enclosure is made from machined acetal and is very robust, water-resistant and tested to IP-67 level. The connectors from the MD-XT are IP-67 rated.

Hardwire to any DC power from: 7-30V.

The hardwiring facility gives the user the freedom to use many options to power the unit.

Inputs & Outputs

The MD-XT has one input and one output. The output can be connected to various devices and triggers and can be controlled and activated remotely via the CP2 software.

Internal rechargeable battery:

The MD-XT also has a small rechargeable internal battery for recovery options which powers the unit for at least 5 - 40 hours in standby mode without any external power source.

Internal shortrange RF beacon.

- The range of the internal RF-beacon is 30-70m.
- The receiver is small and easy to use.

Advanced power management:

There are 6 different power modes available to reduce the unit's power consumption and take control of the operating time.

Internal Knowles microphone.

The MD-XT offers audio listening in capability.

Automatic alarms:

The MD-XT is able to send out alarms on:

- Motion, active/passive.
- Geofence, in/out.
- Battery-capacity under 10%
- The main power being cut off.



HIDDEN TECHNOLOGY
systems international ltd.

www.hiddentec.com



TECHNICAL

Specifications:

| | |
|--------------------------|---|
| Enclosure: | Acetal, Water-resistant, IP-67 level, Dim. 98x46x22mm. |
| Connectors: | GSM - SMA. GPS - SMA. (engravement in enclosure) Input/Output + diagnose. Power 7-30 V and HTSI batteries. |
| Internal battery: | Lithium Ion, 370mAh, rechargeable. |
| GSM system : | 4-band for worldwide support. |
| Communication: | GPRS / SMS / DATA. |
| Reports of: | Quality of Long/Lat position and GSM signal strength. |
| Data-logging: | Long/Lat + GSM-Cell-ID. |
| Memory: | 32.512 positions. |
| GPS module: | High-sensitive, energy saving. |
| Energy control: | 6 Configurable power modes. |
| Geofencing: | 16 Programmable geofences. |
| Movement-sensor: | G-force sensor, non mechanical. |
| Audio capability: | Built in Knowles microphone. |
| RF capability: | Internal close range RF directional beacon 30-70 metres. |
| Input / Output: | Configurable. (ie: input alarm on loss of main power) |

Power management system

Power mode 1

| | |
|-------------------------|--------------------|
| GPS/GSM/GPRS, Always on | 90Hrs / 3.75 Days |
| GPRS, Off | 125 Hrs / 5.2 Days |

Power mode 2

| | |
|---|---------------------------------|
| GSM, Always on, GPS, Switched on movement | 125 - 750 Hrs. / 5.2 - 31 Days |
| GPRS, Also always on | 125 - 213 Hrs. / 5.2 - 8.9 Days |

Power mode 3

| | |
|-------------------------------|---------------------------------|
| GPS/GSM, Switched on movement | 125 - 1200 Hrs. / 5.2 - 50 Days |
| GPRS, also switched on | 90 - 1200 Hrs. / 3.75 - 50 Days |

GPRS

Off / On / Switched on movement

Data-log mode (GSM on timer / GPS on motion)

| | |
|-----------------|-----------|
| 8 Hours per day | 13.7 Days |
| Idle | 42 Days |

Deep sleep mode

| | |
|---|----------|
| Ultra low power mode GPS/GSM Off / with wake up timer setting | 1/2 Year |
|---|----------|

* Power usage at mediate GSM coverage and connected with 7500 mAh external battery.

Items included:

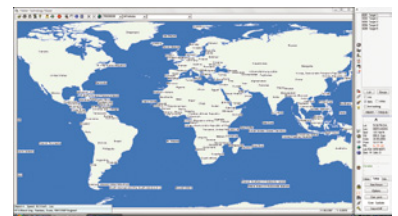
The MD-XT-set is delivered in a "peli" type suitcase, including;

- Wiring looms to connect to external DC power.
- Battery charger for internal battery.
- GPS patch-antenne.
- GSM stubby antenne.
- Data-diagnose cable.
- Shorrange RF-receiver.
- USB-stick with technical manual.
- Allen key.
- Steel plate with neodymium magnets.



Software*:

Configuration, monitoring, live tracking, alarm forwarding to cellphones, email and computers + more time saving automatic functionality via our user friendly software system CP-Server / CP2-Pro and CP-Mobiletrack



* Software not included

Hidden Technology Worldwide Offices

UK Office: Unit C5 Star Business Centre, Fairview Industrial Park, Marsh Way, Rainham, Essex RM13 8UP

European Office: Dolfijn 37A, Enkhuizen, 1601 ME, Holland, The Netherlands

USA Office: 3881 S. Nova Road, Port Orange, FL 32144 USA

Middle East Office: Office No 4, Building 8542, Aldairi Alshamali Road, Cross Prince Turki 1st Street, P.O. Box 61290 Riyadh 11565 T: +966 1207 7773 • saudi@hiddentec.com

T: +44(0)1708 631 333 • info@hiddentec.com

T: +31(0)228 312 498 • europe@hiddentec.com

Tel: +1 386 760 1480 • usa@hiddentec.com